

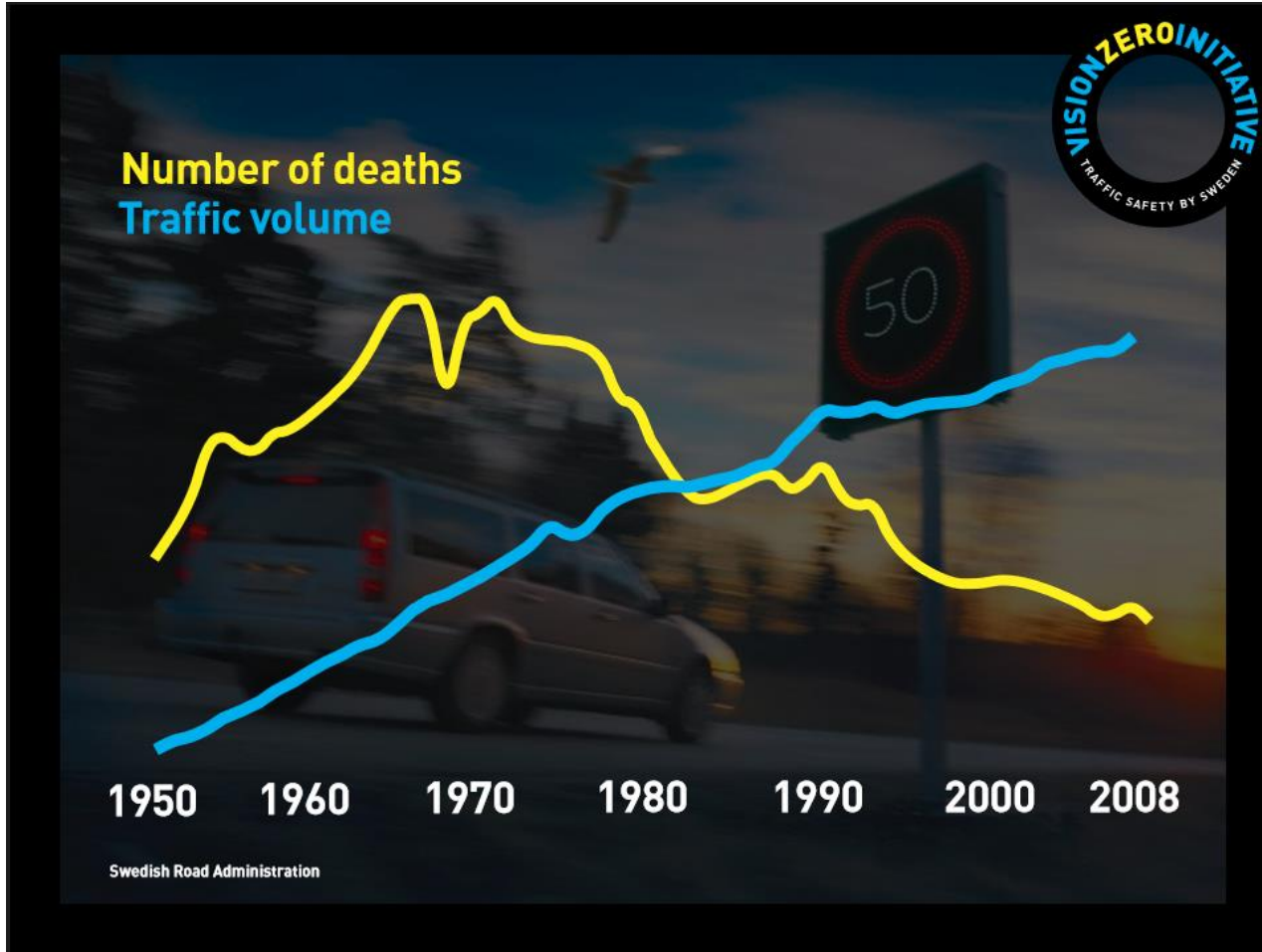
Bellevue Vision Zero Action Plan



English Language Learners Alliance
October 24, 2018

Franz Loewenherz
Principal Transportation Planner
City of Bellevue

What is Vision Zero?

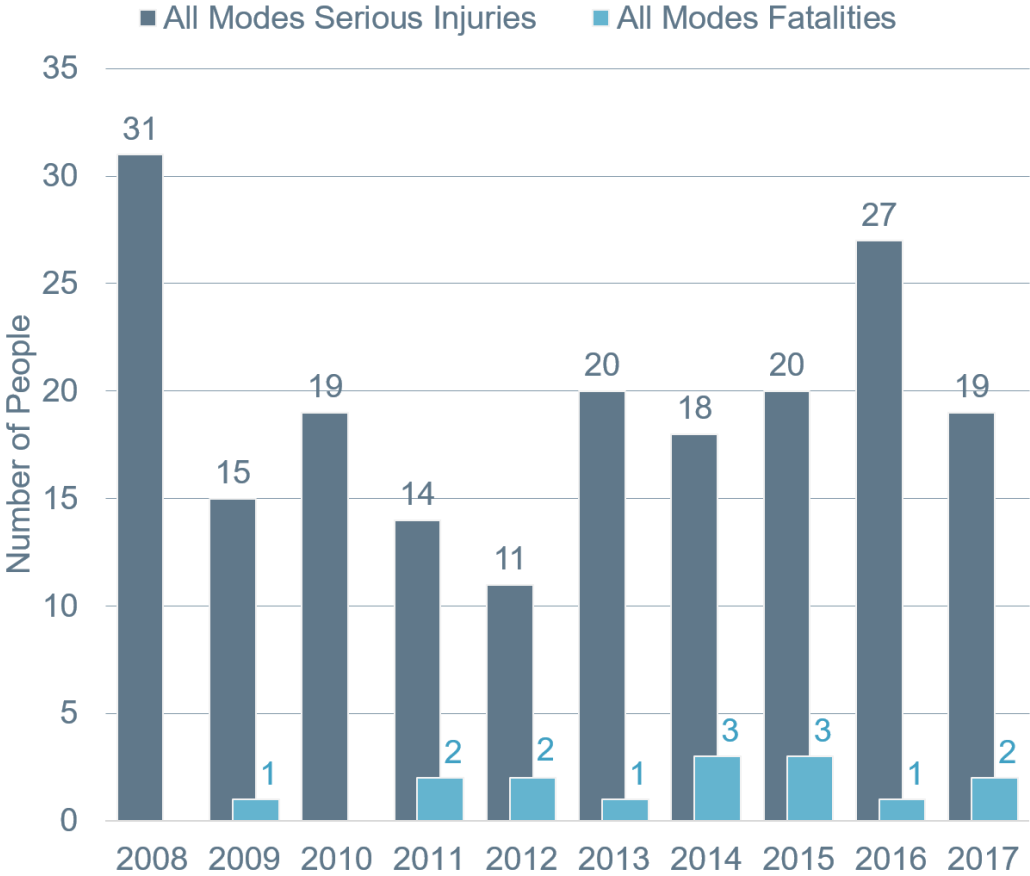
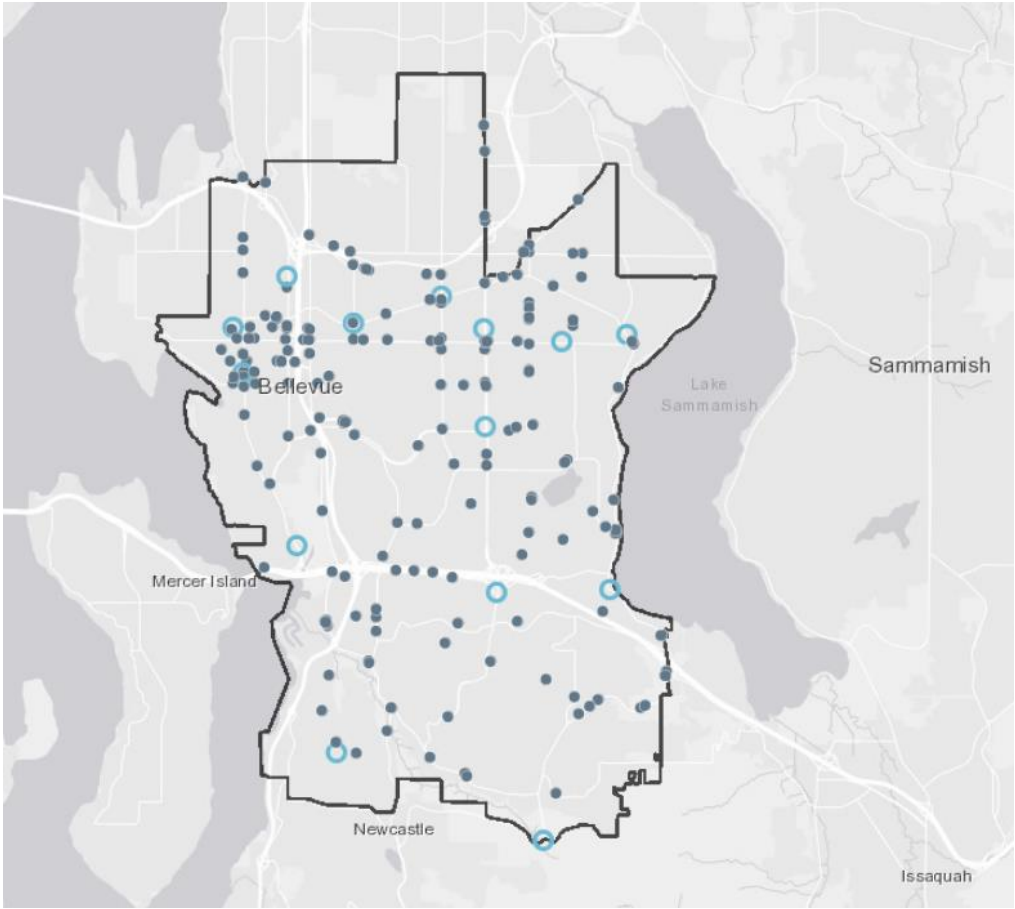


A multi-national traffic safety strategy to eliminate all traffic fatalities and severe injuries, while increasing safe, healthy, equitable mobility for all.

- Recognizes traffic fatality and injuries are the results of crashes and are preventable
- Sets timeline to aggressively eliminate both
- Focused on strategic and measurable goals, and driven by data
- Takes a multidisciplinary approach

Traffic deaths in New York City (the earliest U.S. adopter of Vision Zero) are down 22% since 2013, just before the city launched Vision Zero. Pedestrian deaths dropped to a record low in New York City in 2015.

Bellevue: Collision Related Fatalities & Serious Injuries



There were 1,495 police reported collisions in the City of Bellevue in 2017, which resulted in 467 injuries. Of these 467 injuries, 19 were serious injuries and two (2) were fatalities.



Why do we need a Vision Zero Action Plan?

Hit-and-run driver nearly kills woman on bike in Bellevue

BY KOMO NEWS | WEDNESDAY, MARCH 23RD 2016



Car strikes, kills toddler in stroller in Bellevue

Originally published September 29, 2015 at 11:03 am | Updated September 30, 2015 at 10:27 am



Suspected DUI crash leaves two injured in Bellevue

Travis Pittman, KING 4:01 AM, PST February 23, 2017



(Photo: Pittman, Travis)

CONNECT TWEET LINKEDIN GOOGLE+ PINTEREST

BELLEVUE, Wash.-- Two people were taken to the hospital after a head-on crash involving a suspected drunk driver Thursday morning.

It happened before 1 a.m. on 148th Avenue NE between Main Street and NE 8th Street.

Bellevue Police say the suspected DUI driver was taken to Harborview Medical Center. The driver of the other car was taken to Overlake Medical Center. Their conditions were not immediately known.

Copyright 2017 KING

Bellevue Way closed, woman sent to hospital in life-threatening condition after collision

POSTED 5:36 PM, OCTOBER 5, 2016, BY Q13 NEWS STAFF

FACEBOOK 52 TWITTER REDDIT G+ GOOGLE PINTEREST EMAIL

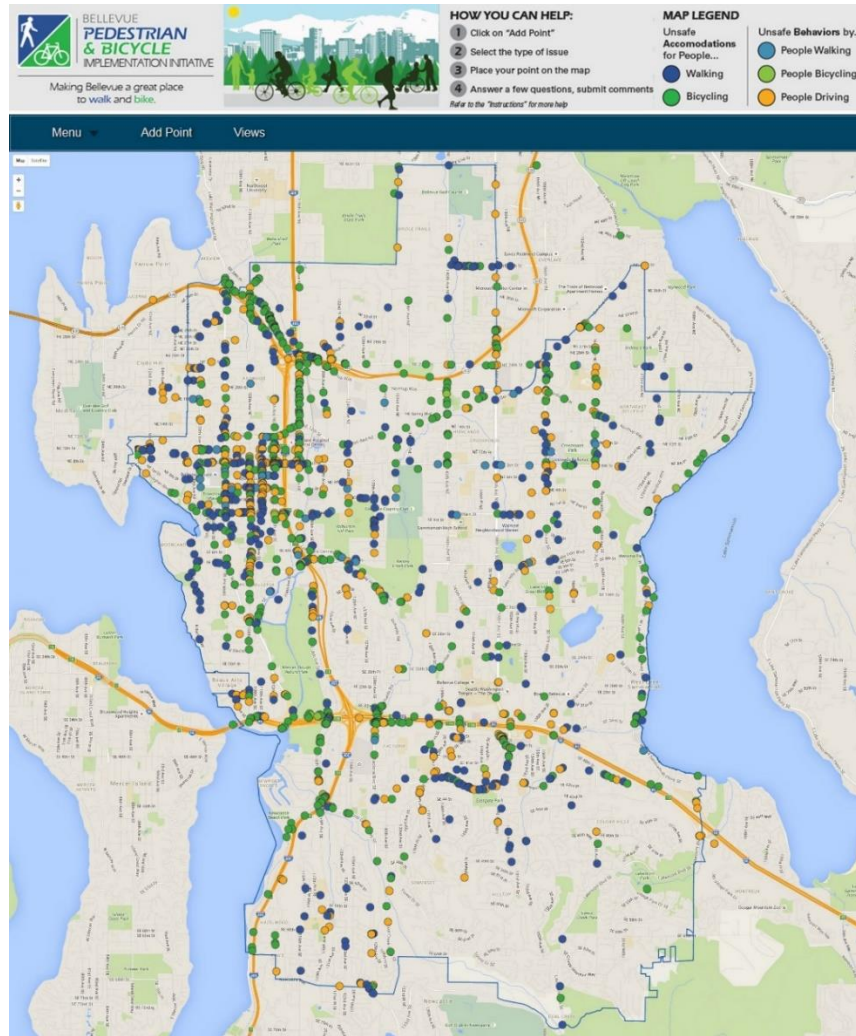
This is an archived article and the information in the article may be outdated. Please look at the time stamp on the story to see when it was last updated.

BELLEVUE, Wash. – A major road was closed and a woman was sent to the hospital with life-threatening injuries after a crash in Bellevue on Wednesday afternoon, police said.

Police said the woman was injured in a collision between a vehicle and a pedestrian.



Community Feedback



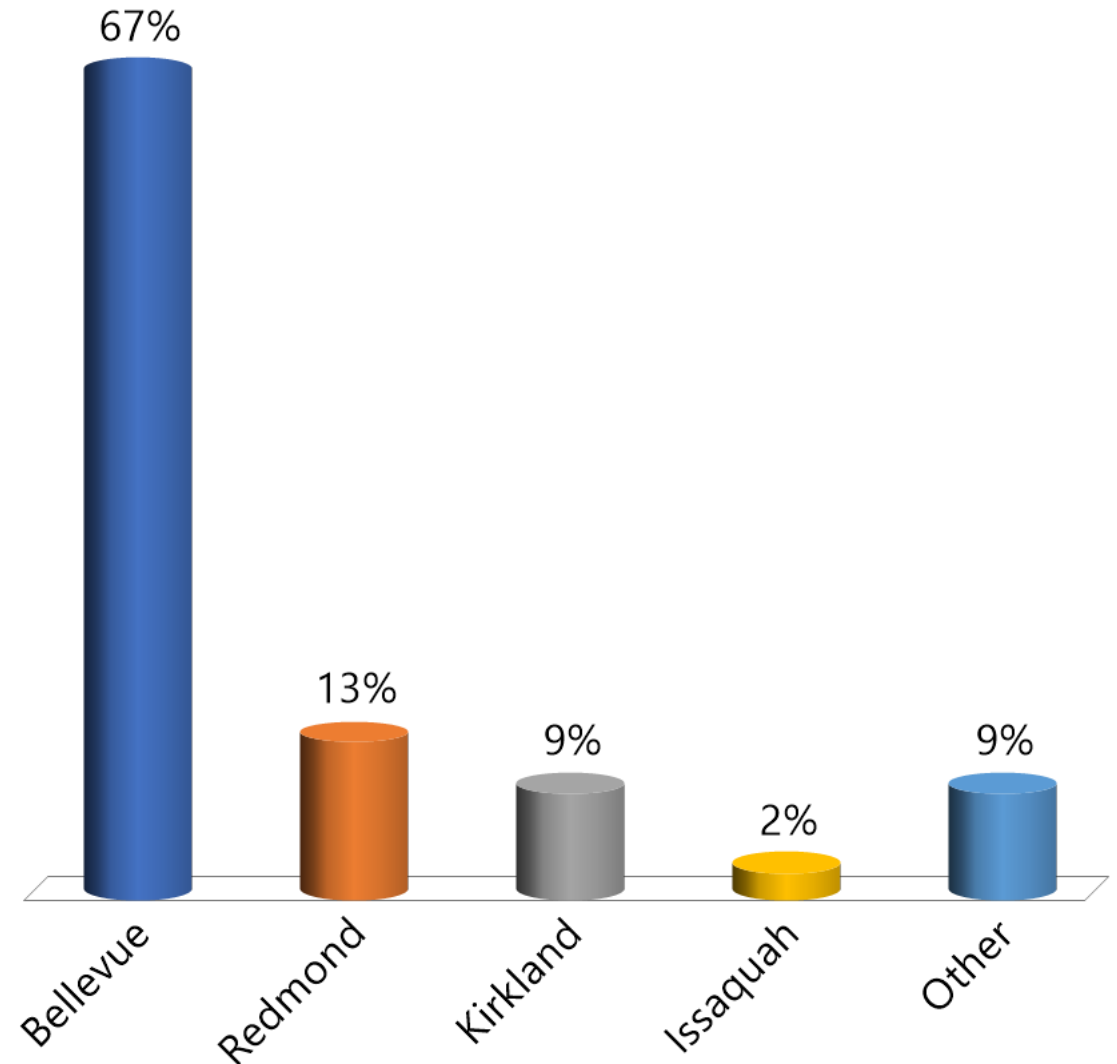
	Total Points Placed	
Ped Facilities	514	32%
Bike Facilities	573	35%
Ped Behaviors	57	4%
Bike Behaviors	22	1%
Car Behaviors	452	28%
Total	1618	

Key Pad Polling



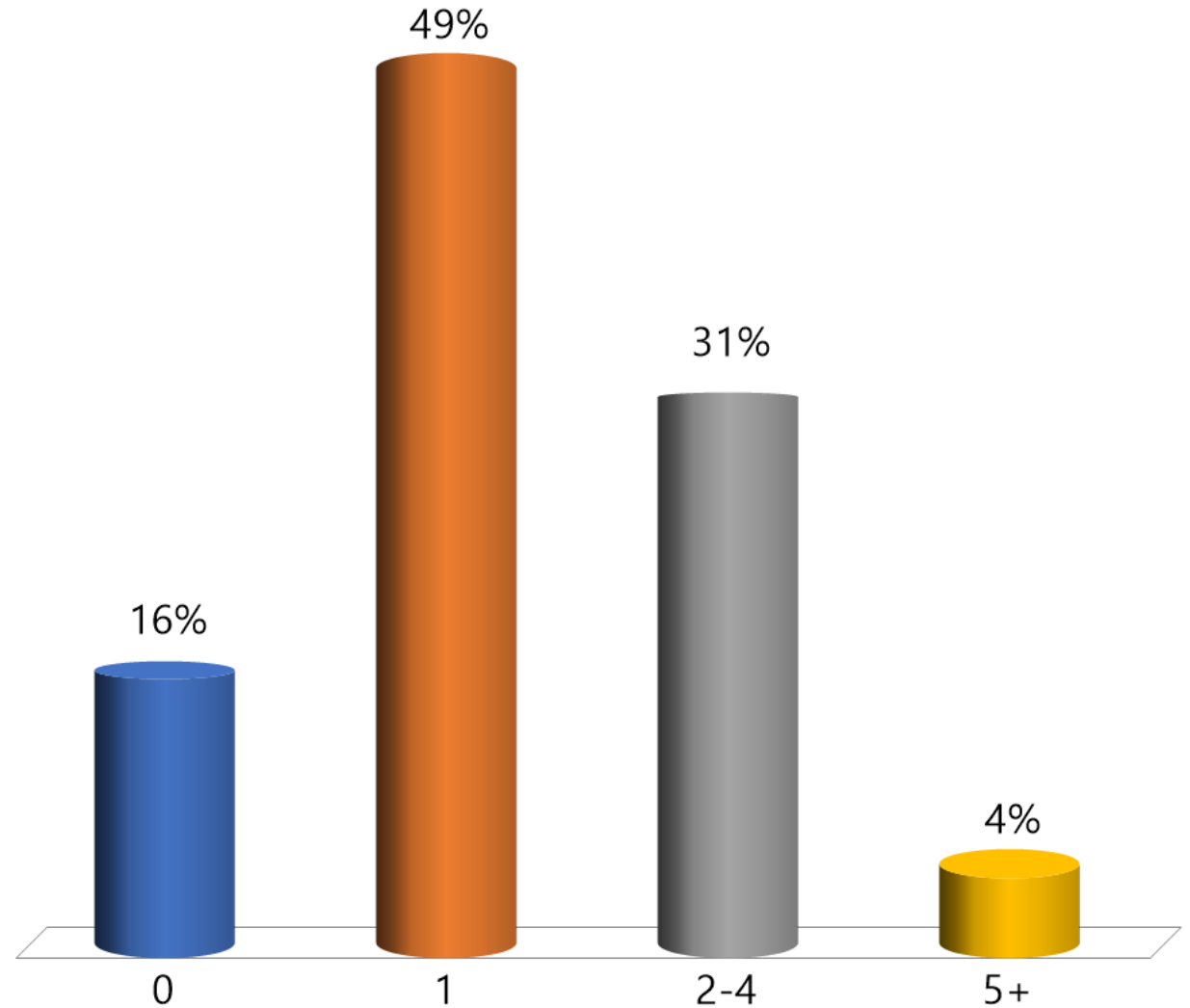
Please indicate where you live.

- A. Bellevue**
- B. Redmond**
- C. Kirkland**
- D. Issaquah**
- E. Other**



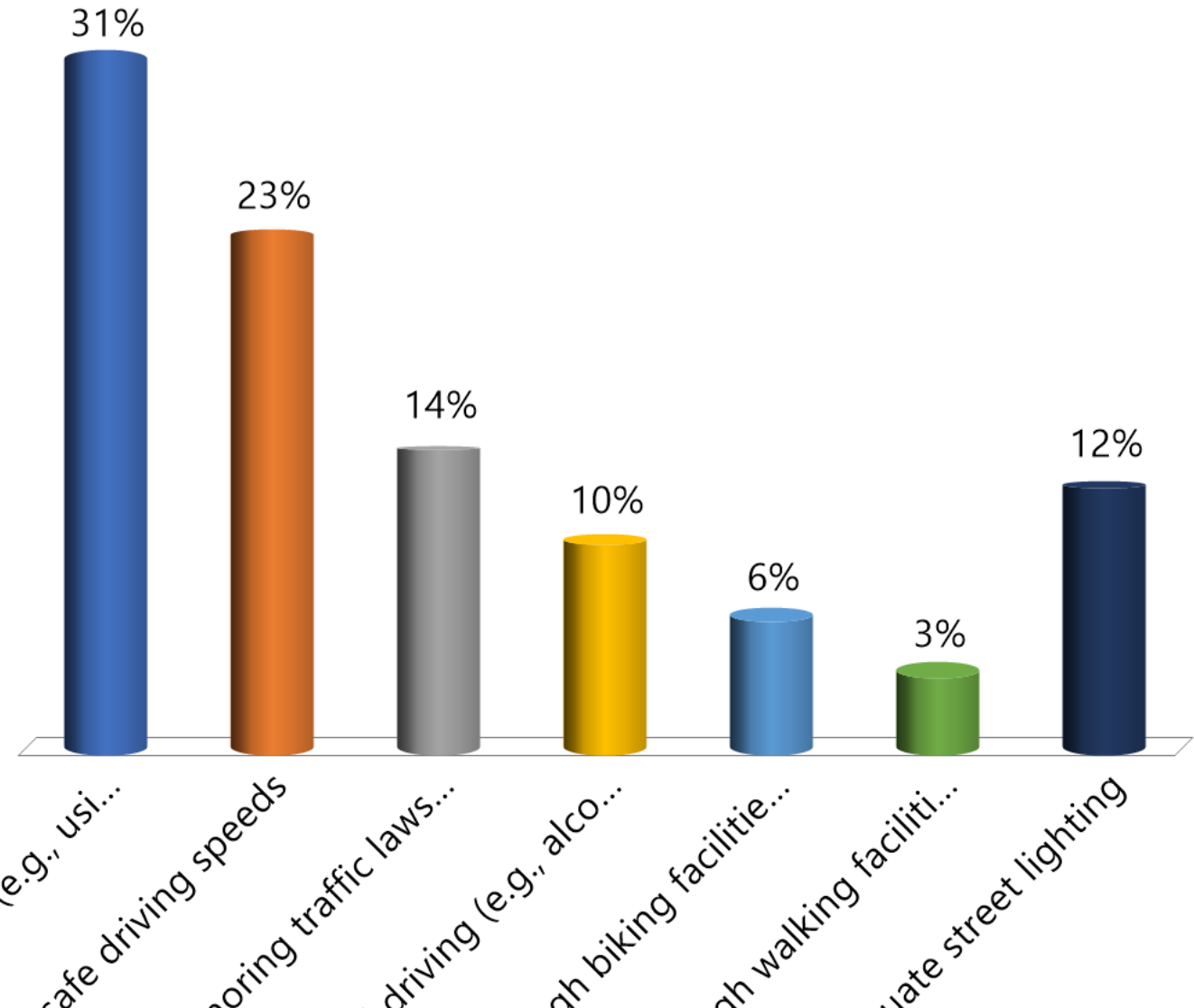
How many people do you know personally who have been involved in a traffic collision in the City of Bellevue?

- A. 0
- B. 1
- C. 2-4
- D. 5+



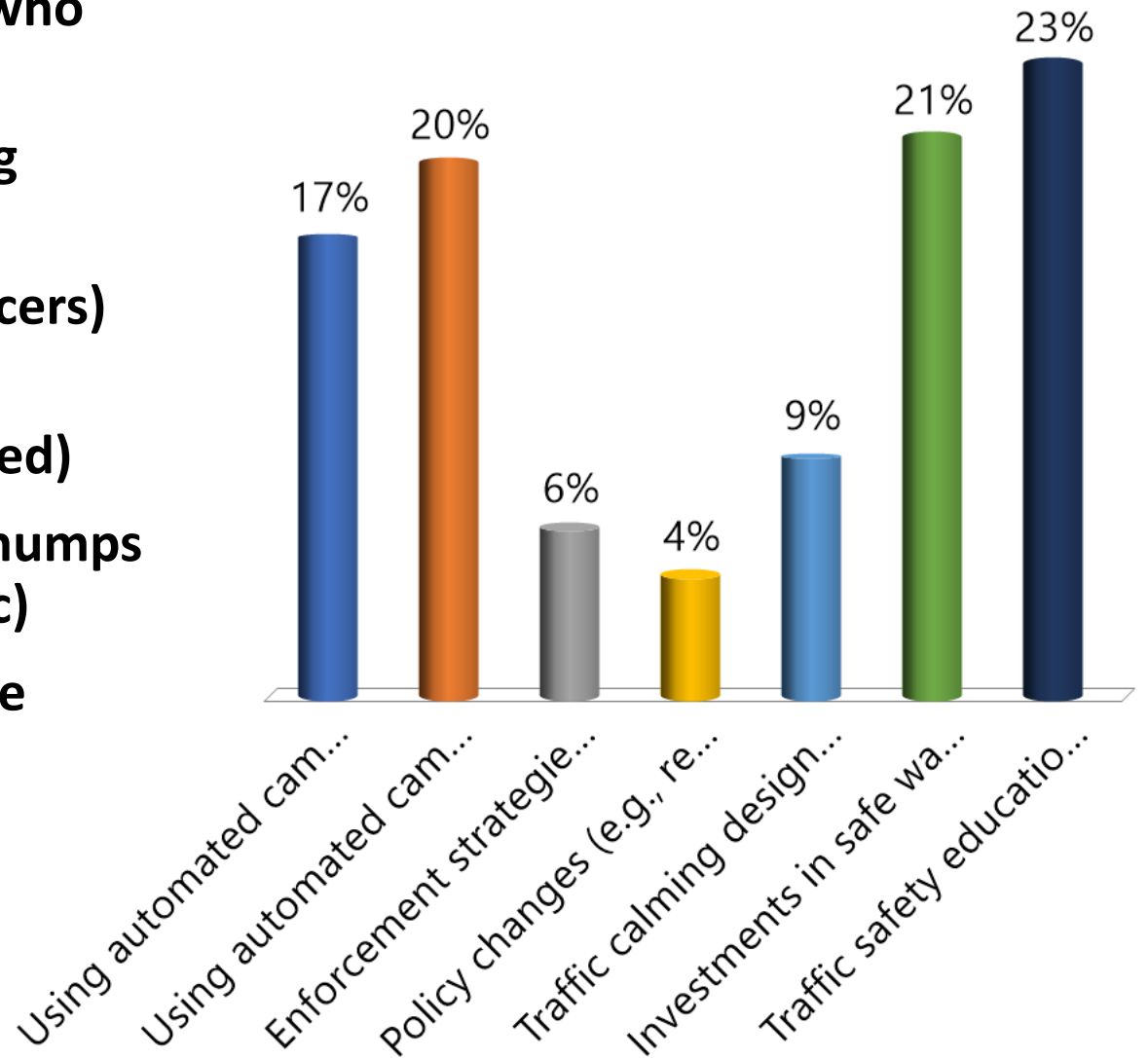
What do you think are the top three (3) challenges to moving safely around the City of Bellevue?

- A. Distracted driving (e.g., using a phone)
- B. Unsafe driving speeds
- C. People ignoring traffic laws and traffic signals
- D. Impaired driving (e.g., alcohol)
- E. Not enough biking facilities (e.g., bike lanes)
- F. Not enough walking facilities (e.g., sidewalks, crosswalks)
- G. Inadequate street lighting



Please select as many of the following Vision Zero strategies that you support.

- A. Using automated cameras to ticket drivers who run red lights
- B. Using automated cameras to ticket speeding drivers
- C. Enforcement strategies (e.g., additional officers)
- D. Policy changes (e.g., reduced speed limits, increased penalties against drivers who speed)
- E. Traffic calming design changes (e.g., speed humps and other treatments that slow down traffic)
- F. Investments in safe walking and biking space (e.g., new bike lanes and sidewalks)
- G. Traffic safety education programs



Vision Zero Pledge Activity

VISION ZERO COMMUNITY PLEDGES | 1

HOW CAN YOU HELP?

Your opinions matter! The city wants to partner with you in creating a customized Vision Zero pledge that will help make Bellevue a safer place. It's fun, simple, and it'll make a difference in people's lives!

1. **Read** over the various pledges on the boards
2. **Choose** the pledges that best resonates with you
3. **Stick** the colored dots to your chosen pledges
4. **Remember & Apply** these pledges in your daily life

WHICH PLEDGES DO YOU LIKE?

Recognize that collisions are avoidable and my choices matter to the lives of others

47

Everyone has a role to play in reducing traffic deaths

13

Look out for others especially children, the elderly, people with disabilities, and people walking and biking

24

Slow down and look around, especially at intersections and driveways

32

Travel at safe speeds and follow the speed limit

27

VISION ZERO COMMUNITY PLEDGES | 2

Follow the rules of the road and remember to yield to pedestrians

25

Eyes on the road/sidewalk and not on my phone

42

Drive as if your family lives here

15

Be extra careful when traveling on wide, fast roads

3

Prioritize the people around me over my own schedule

8

Obey all traffic laws - pedestrian, biking, and driving

26

Only drive while sober, alert, and free of distractions

31

Respect that people walking have the right of way

24

Share the road with all users

22



Personalized Vision Zero Pledge



Kate, Bellevue Resident

“Pedestrian crossings are for pedestrians! (please stop before them, not on them – message for drivers)”

Personalized Vision Zero Pledge



***“One second of
inattention could
change everything!”***

Personalized Vision Zero Pledge



“Do not look at your phone while driving.”

Personalized Vision Zero Pledge



Yinfei Yang, Bellevue Resident

***“Safety first;
drive safely.”***

Personalized Vision Zero Pledge



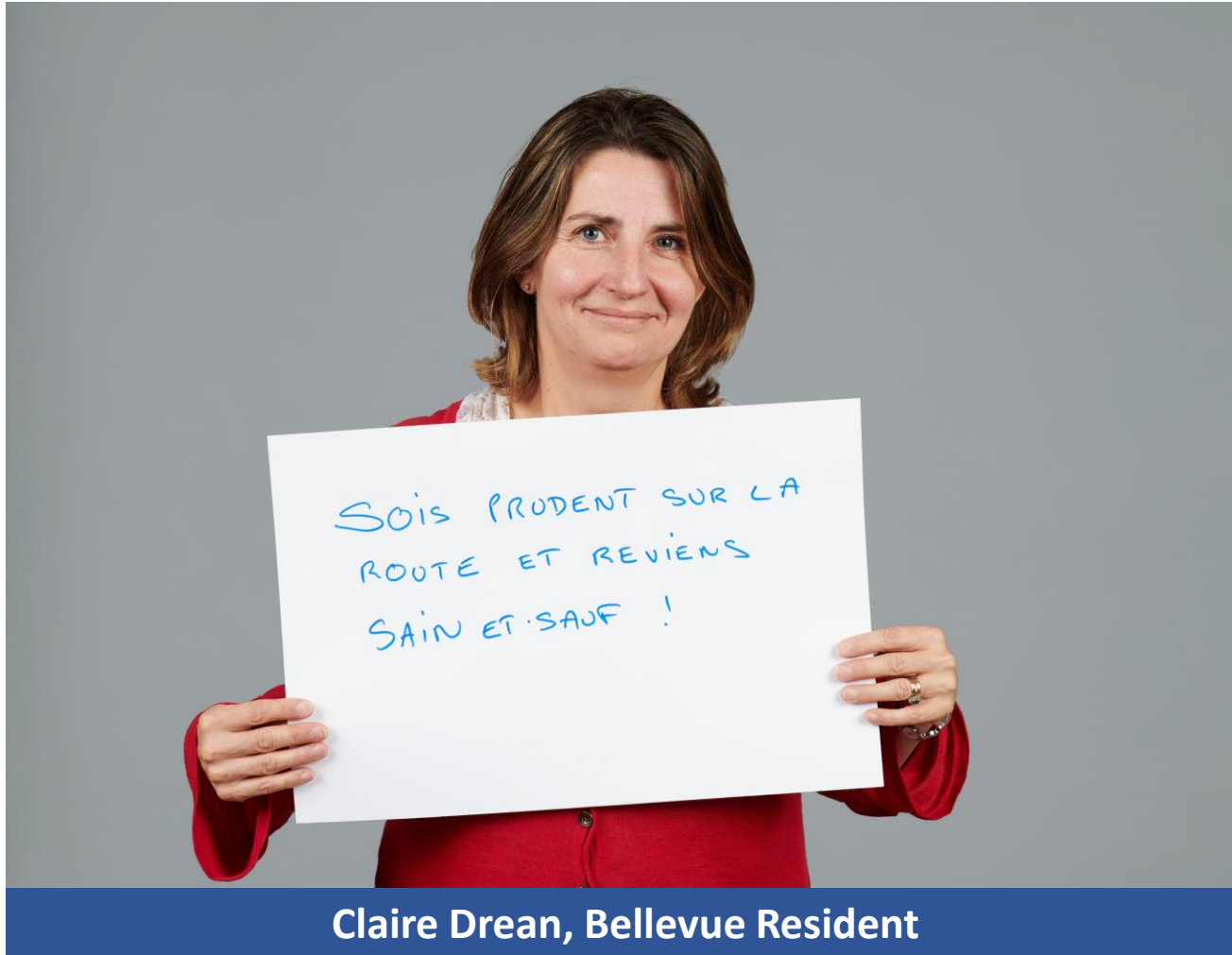
“Focus on safety while considering privacy.”

Personalized Vision Zero Pledge



***“Stop before crossing.
Don’t ring up phone
when driving. Life is
beyond everything.”***

Personalized Vision Zero Pledge



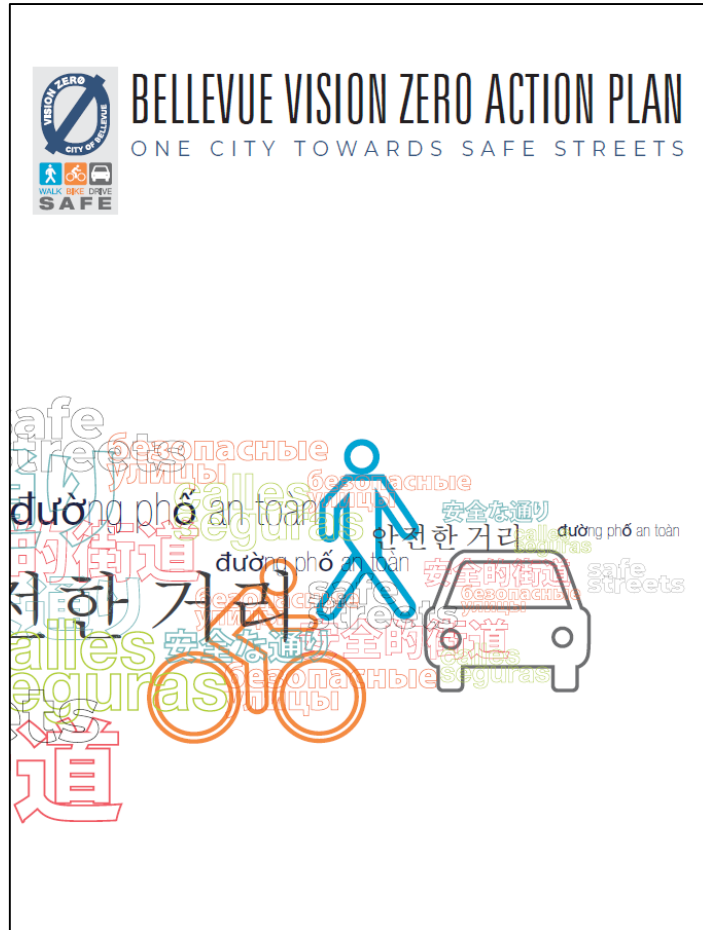
***“Be careful on the road
and come back safe!”***

Personalized Vision Zero Pledge



“When you drive, only drive!”

For More Information



Franz Loewenherz
Principal Transportation Planner
floewenherz@bellevuewa.gov
425-452-4077