

ALTERNATIVE I: EDUCATIONAL EMPHASIS

Site Subsections

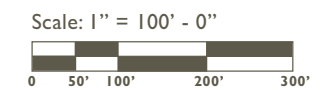
- R Ravine Corridor
- U Upper Terrace
- S Shoreline
- K Kite Parcel



Park Program Elements

- 01 Fully day-lighted stream with interpretive/education nodes along adjacent pedestrian path
- 02 Ravine enhancements (Contiguous canopy forested areas to be retained and enhanced; invasive plants removed)
- 03 Relocated Wetland (Incorporation of wetlands with the stream/shoreline delta to form a contiguous surface water structure)
- 04 Water detention features (bioswales)
- 05 Upper viewing terrace (+/- 10 short-term parking spaces)
- 06 Surface parking lot (15 to 25 spaces)
- 07 Playground (for school-aged children)
- 08 Grass picnic area with shade structure
- 09 Youth Environmental Education Center: restrooms, gathering space, outdoor education green, and terraced gardens
- 10 Waterfront pathway with pedestrian and emergency vehicle access
- 11 Restrooms (with green roof and interpretive/educational signage)
- 12 Short-term marina parking (10 to 15 spaces) and dropoff area
- 13 Removal of Piers 2 and 3
- 14 Public dock with viewing platform and 14 transient moorage slips
- 15 Integrated ADA accessible terraced walkway with stormwater feature
- 16 Whaling Building: Historical/Cultural Maritime Center
- 17 Enhanced hillside woodland (Removal of invasive species, preservation of significant trees, and planting of native forbs, shrubs and trees)
- 18 Artificial swim beach with people propelled vessel launch
- 19 Softened shoreline (improved nearshore habitat and addition of native riparian vegetation, including overhanging plants and woody debris)
- 20 Trail connects Lake-to-Lake Trail system

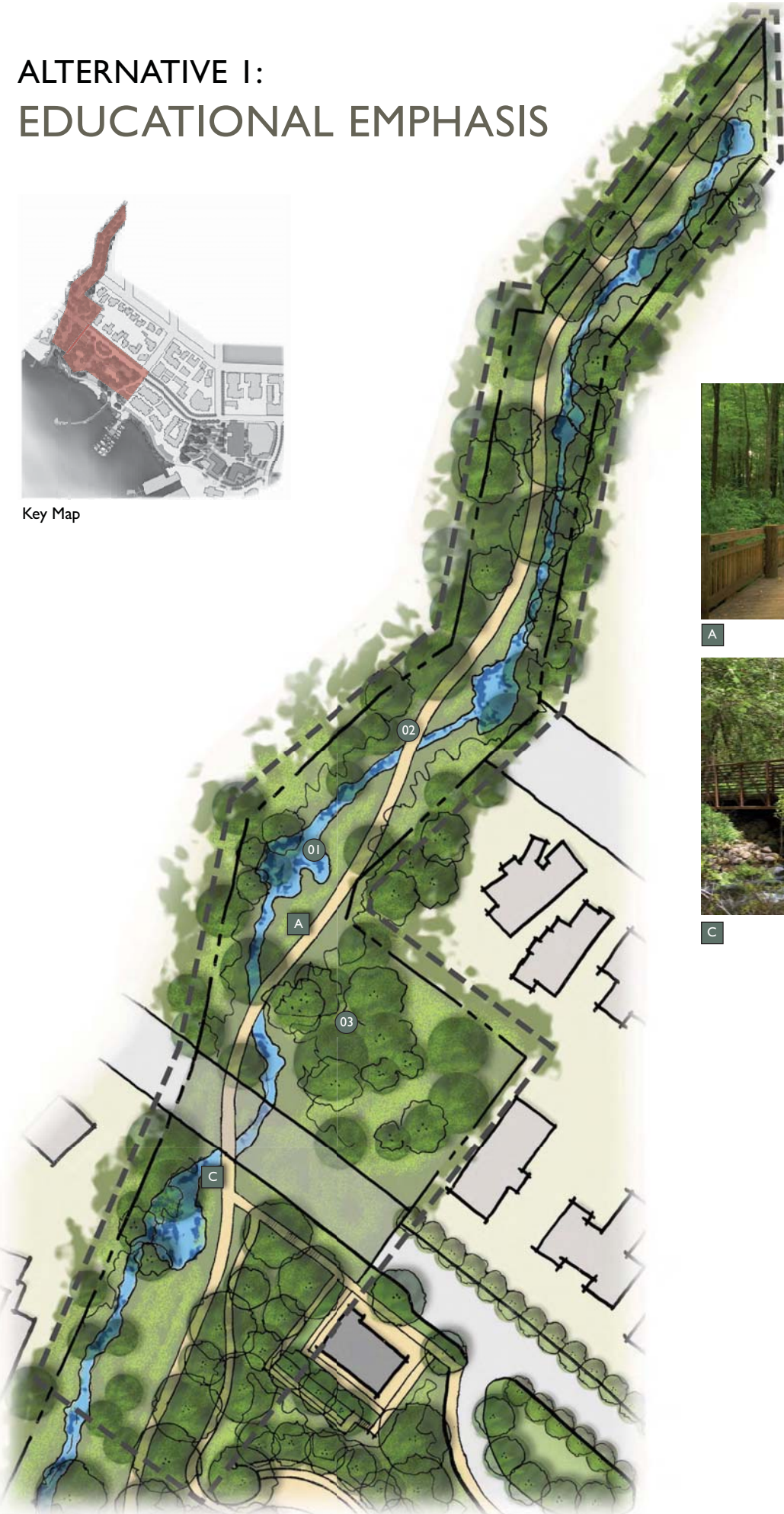
Marina Program	Existing	Alternative I
Pier Removal	NA	Removes Piers 2 & 3
Permanent Long-term Moorage	87 slips	18 to 28 slips
Not in Service/Transient	25 slips	14 slips South side of floating pier
People Propelled Vessels (PPV)	No facilities	Up to 15 PPV slips South side of floating pier and at beach
Boat Storage	No facilities	Limited potential on land



ALTERNATIVE I: EDUCATIONAL EMPHASIS



Key Map

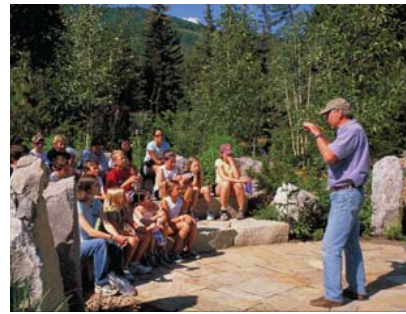


Ravine Corridor

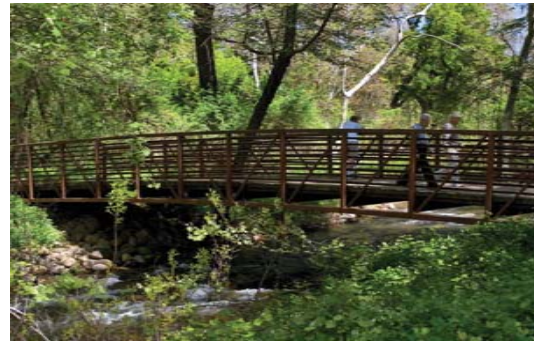
- 01 Fully day-lighted stream
- 02 Interpretive/education nodes along adjacent pedestrian path
- 03 Ravine enhancements (Contiguous canopy forested areas to be retained and enhanced; invasive plants removed)



A



B

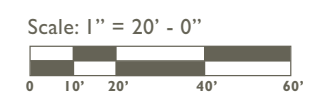
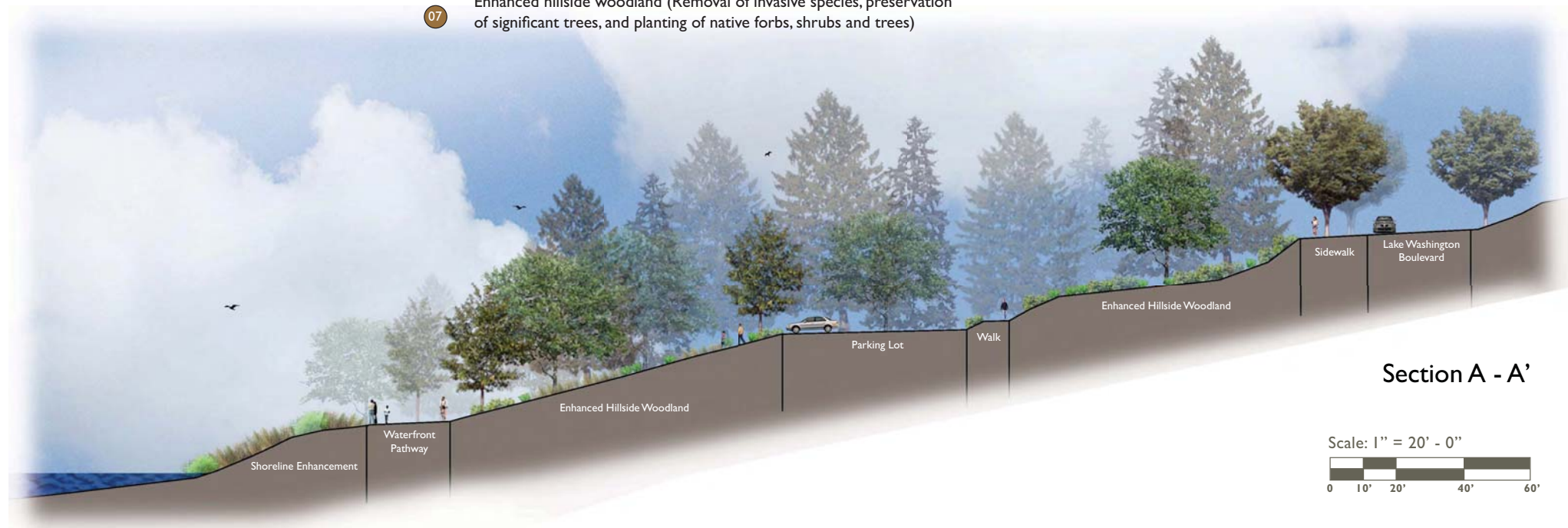
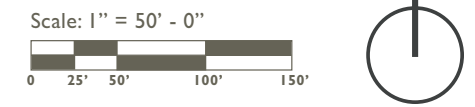


C



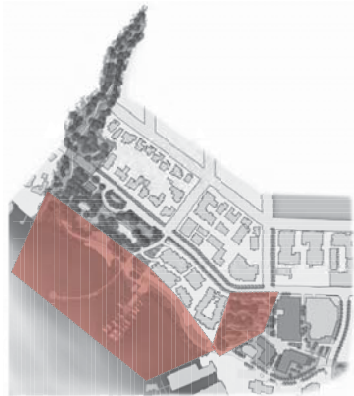
Upper Terrace

- 01 Water detention features (bioswales)
- 02 Upper viewing terrace (+/- 10 short-term parking spaces)
- 03 Surface parking lot (15 to 25 spaces)
- 04 Youth Environmental Education Center: restrooms, gathering space
- 05 Outdoor education green
- 06 Terraced gardens
- 07 Enhanced hillside woodland (Removal of invasive species, preservation of significant trees, and planting of native forbs, shrubs and trees)

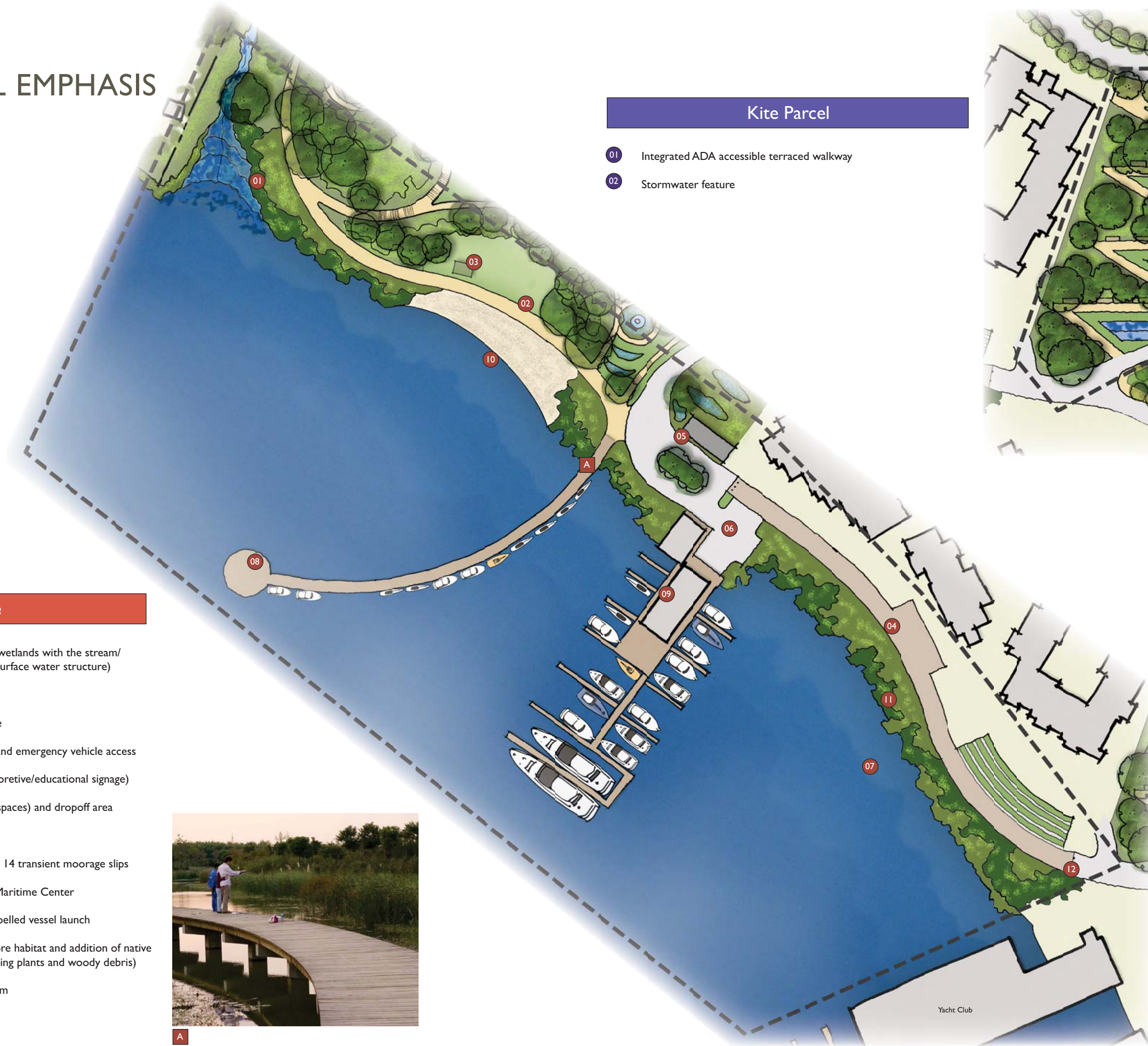


MEYDENBAUER BAY PARK & LAND USE PLAN

ALTERNATIVE I: EDUCATIONAL EMPHASIS

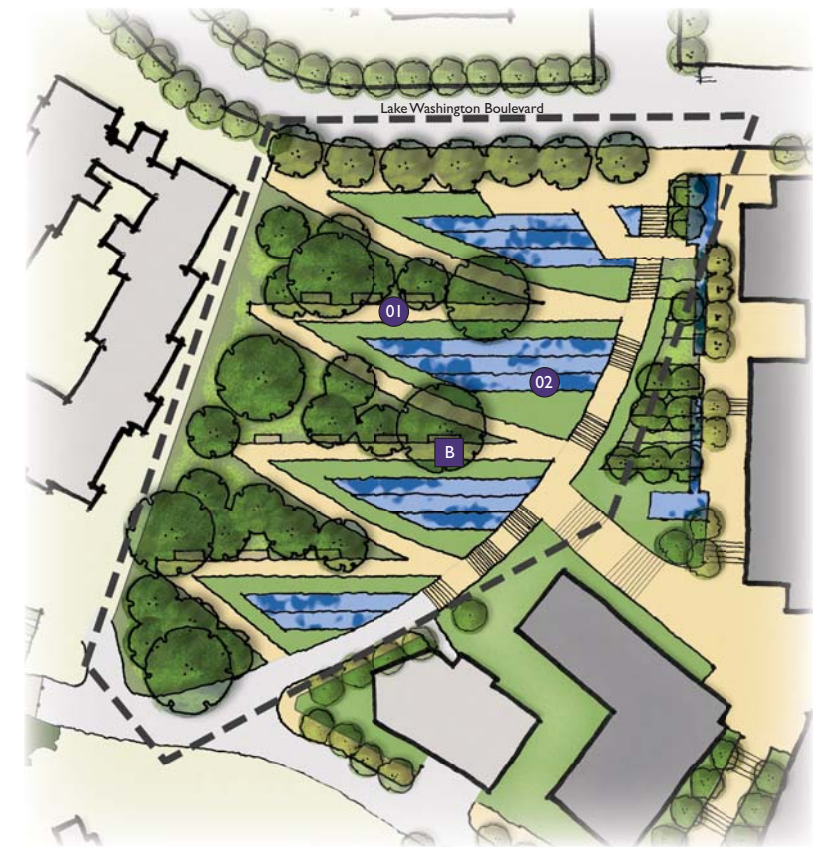


Key Map



Kite Parcel

- 01 Integrated ADA accessible terraced walkway
- 02 Stormwater feature



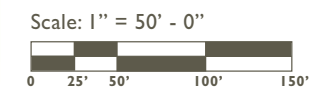
B

Shoreline

- 01 Relocated Wetland (Incorporation of wetlands with the stream/shoreline delta to form a contiguous surface water structure)
- 02 Playground (for school-aged children)
- 03 Grass picnic area with shade structure
- 04 Waterfront pathway with pedestrian and emergency vehicle access
- 05 Restrooms (with green roof and interpretive/educational signage)
- 06 Short-term marina parking (10 to 15 spaces) and dropoff area
- 07 Removal of Piers 2 and 3
- 08 Public dock with viewing platform and 14 transient moorage slips
- 09 Whaling Building: Historical/Cultural Maritime Center
- 10 Artificial swim beach with people propelled vessel launch
- 11 Softened shoreline (improved nearshore habitat and addition of native riparian vegetation, including overhanging plants and woody debris)
- 12 Trail connects Lake-to-Lake Trail system



A



ALTERNATIVE 2: SHORELINE EMPHASIS

Site Subsections

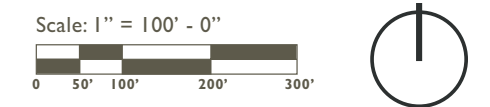
- R Ravine Corridor
- U Upper Terrace
- S Shoreline
- K Kite Parcel



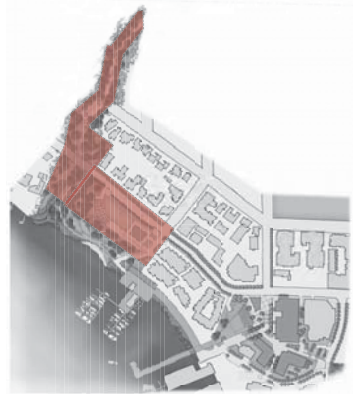
Park Program Elements

- 01 Partially day-lighted stream
- 02 Retain existing paths, roads and parking in ravine
- 03 Ravine enhancements (Contiguous canopy forested areas to be retained and enhanced; invasive plants removed)
- 04 Park viewing terrace and patio with gallery/exhibition space and parking below (80 to 120 spaces)
- 05 Playground (for school-aged children)
- 06 Grass picnic area shaded by trees
- 07 Shoreline boardwalk with pedestrian and emergency vehicle access
- 08 Small seasonal vendor kiosks and restrooms
- 09 Short-term marina parking (4 to 8 spaces) and dropoff area
- 10 Removal of Piers 2 and 3, additional moorage on Pier 1
- 11 Shoreline elevated viewing platform (with elevator) to public dock
- 12 Public dock with people propelled vessel launch and 14 transient moorage slips
- 13 Main Street plaza / Bay view steps
- 14 Atrium Cafe
- 15 Tucked under canoe and kayak storage/rental, artist studios
- 16 Tucked under parking structure (80 to 125 spaces)
- 17 Whaling Building: Historical/Cultural Maritime Center
- 18 Enhanced hillside woodland (Removal of invasive species, preservation of significant trees, and planting of native forbs, shrubs and trees)
- 19 Artificial swim beach
- 20 Softened shoreline (improved nearshore habitat and addition of native riparian vegetation, including overhanging plants and woody debris)
- 21 Trail connects Lake-to-Lake Trail system

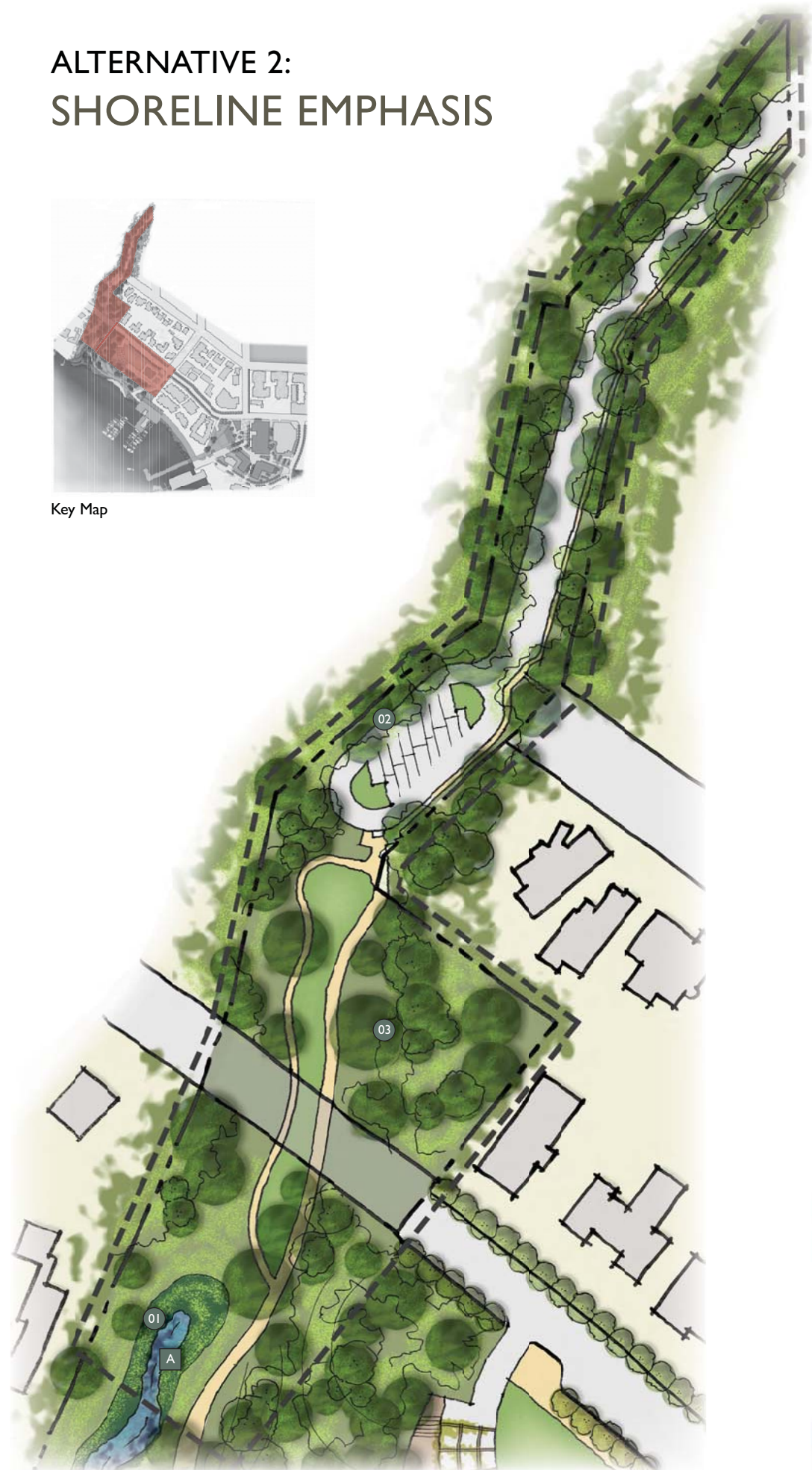
Marina Program	Existing	Alternative 2
Pier Removal	NA	Removes Piers 2 & 3 Pier 1 expanded
Permanent Long-term Moorage	87 slips	25 to 33 slips
Not in Service/Transient	25 slips	14 slips North side of public pier
People Propelled Vessels (PPV)	No facilities	Up to 12 PPV slips South side of public pier
Boat Storage	No facilities	In storage/rental space at end of Meydenbauer Way



ALTERNATIVE 2: SHORELINE EMPHASIS



Key Map



Ravine Corridor

- 01 Partially day-lighted stream
- 02 Retain existing paths, roads and parking in ravine
- 03 Ravine enhancements (Contiguous canopy forested areas to be retained and enhanced; invasive plants removed)



A



B

Upper Terrace

- 01 Park viewing terrace
- 02 Patio
- 03 Gallery/exhibition space and parking below (80 to 120 spaces)
- 04 Surface parking lot with arbor (10 to 12 spaces)
- 05 Enhanced hillside woodland (Removal of invasive species, preservation of significant trees, and planting of native forbs, shrubs and trees)



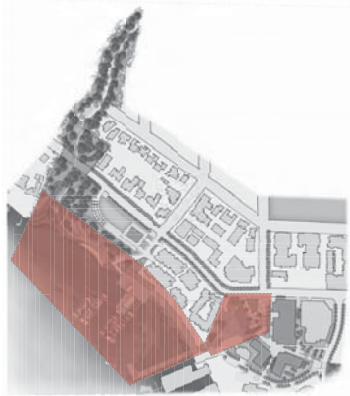
Scale: 1" = 50' - 0"
0 25' 50' 100' 150'



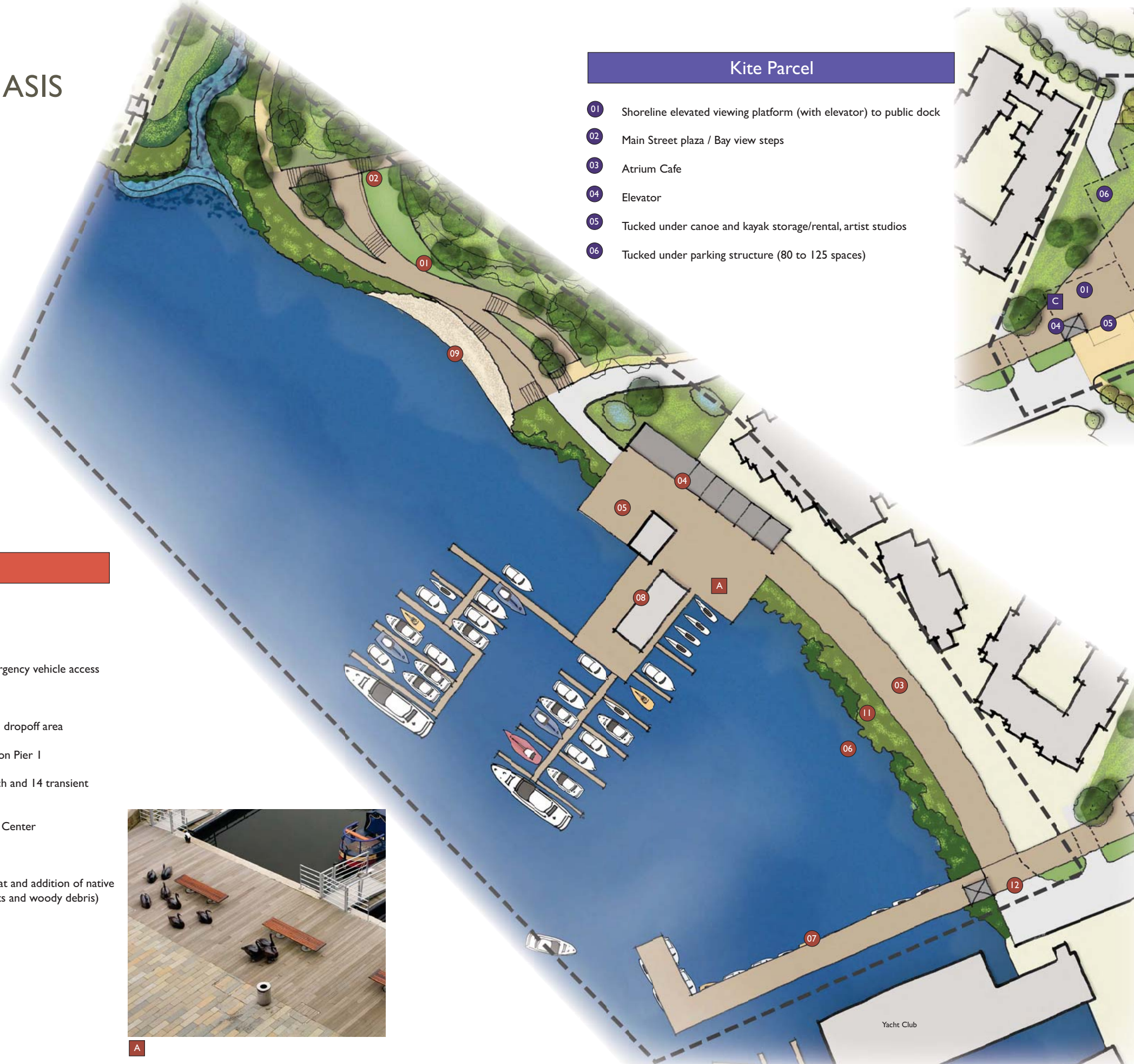
Section C -C'

Scale: 1" = 20' - 0"
0 10' 20' 40' 60'

ALTERNATIVE 2: SHORELINE EMPHASIS

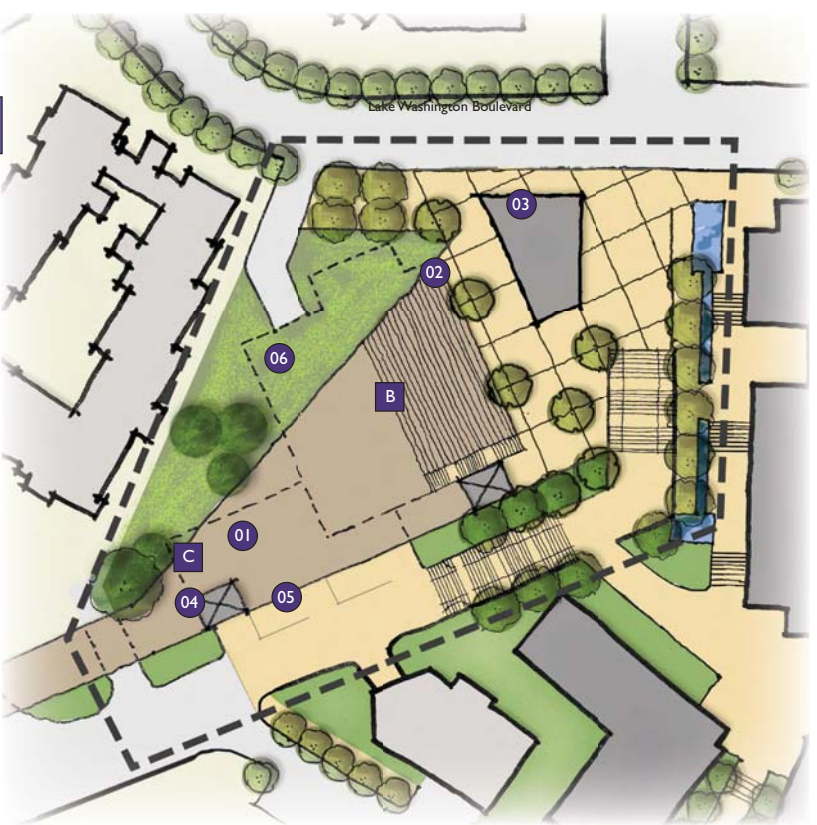


Key Map



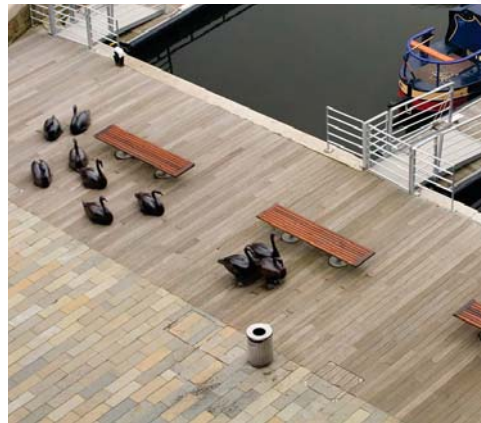
Kite Parcel

- 01 Shoreline elevated viewing platform (with elevator) to public dock
- 02 Main Street plaza / Bay view steps
- 03 Atrium Cafe
- 04 Elevator
- 05 Tucked under canoe and kayak storage/rental, artist studios
- 06 Tucked under parking structure (80 to 125 spaces)

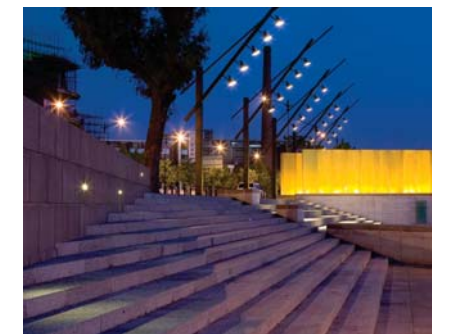


Shoreline

- 01 Playground (for school-aged children)
- 02 Grass picnic area shaded by trees
- 03 Shoreline boardwalk with pedestrian and emergency vehicle access
- 04 Small seasonal vendor kiosks and restrooms
- 05 Short-term marina parking (4 to 8 spaces) and dropoff area
- 06 Removal of Piers 2 and 3, additional moorage on Pier 1
- 07 Public dock with people propelled vessel launch and 14 transient moorage slips
- 08 Whaling Building: Historical/Cultural Maritime Center
- 09 Artificial swim beach
- 11 Softened shoreline (improved nearshore habitat and addition of native riparian vegetation, including overhanging plants and woody debris)
- 12 Trail connects Lake-to-Lake Trail system



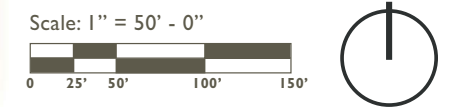
A



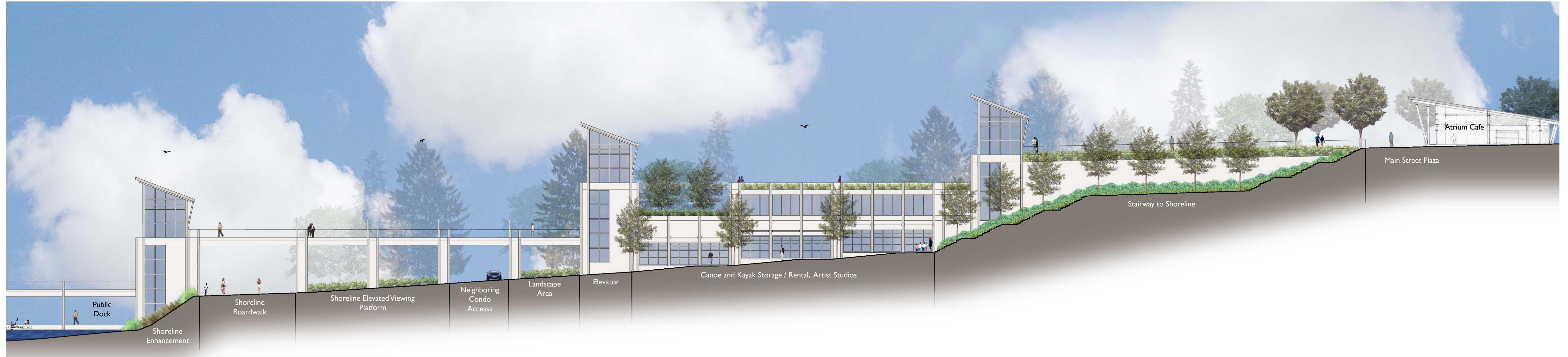
B



C



ALTERNATIVE 2: SHORELINE EMPHASIS



Section D - D'
Scale: 1" = 20' - 0"
0 10' 20' 40' 60'

ALTERNATIVE 3: CIVIC EMPHASIS

Site Subsections

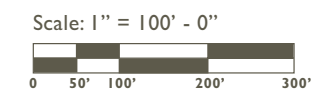
- R Ravine Corridor
- U Upper Terrace
- S Shoreline
- K Kite Parcel



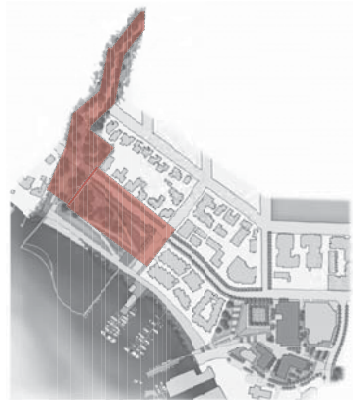
Park Program Elements

- 01 Ravine enhancement (Contiguous canopy forested areas to be retained and enhanced; invasive plants removed)
- 02 Retain existing restroom, paths, roads and parking in ravine
- 03 Grand viewing plaza and terraces with ADA path to shoreline promenade
- 04 Parking area (15 to 25 on-street spaces along 99th)
- 05 Playground (for school-aged children)
- 06 Grass picnic area with shade structure
- 07 Swim Theater
- 08 Floating boardwalk with people propelled vessel launch
- 09 Retreat center with restrooms
- 10 Shoreline promenade with pedestrian and emergency vehicle access
- 11 Short-term marina parking (+/- 5 spaces) and dropoff area
- 12 Removal of Pier 3
- 13 Public viewing pier with 14 transient moorage slips
- 14 Main Street civic plaza with cascading water wall
- 15 Public art piece
- 16 Tucked under canoe and kayak storage/rental, artist studios
- 17 Whaling Building: Historical/Cultural Maritime Center
- 18 Enhanced hillside woodland (Removal of invasive species, preservation of significant trees, and planting of native forbs, shrubs and trees)
- 19 Artificial swim beach
- 20 Enhanced shoreline (improved nearshore habitat and addition of native riparian vegetation, including overhanging plants and woody debris)
- 21 Trail connects Lake-to-Lake Trail system

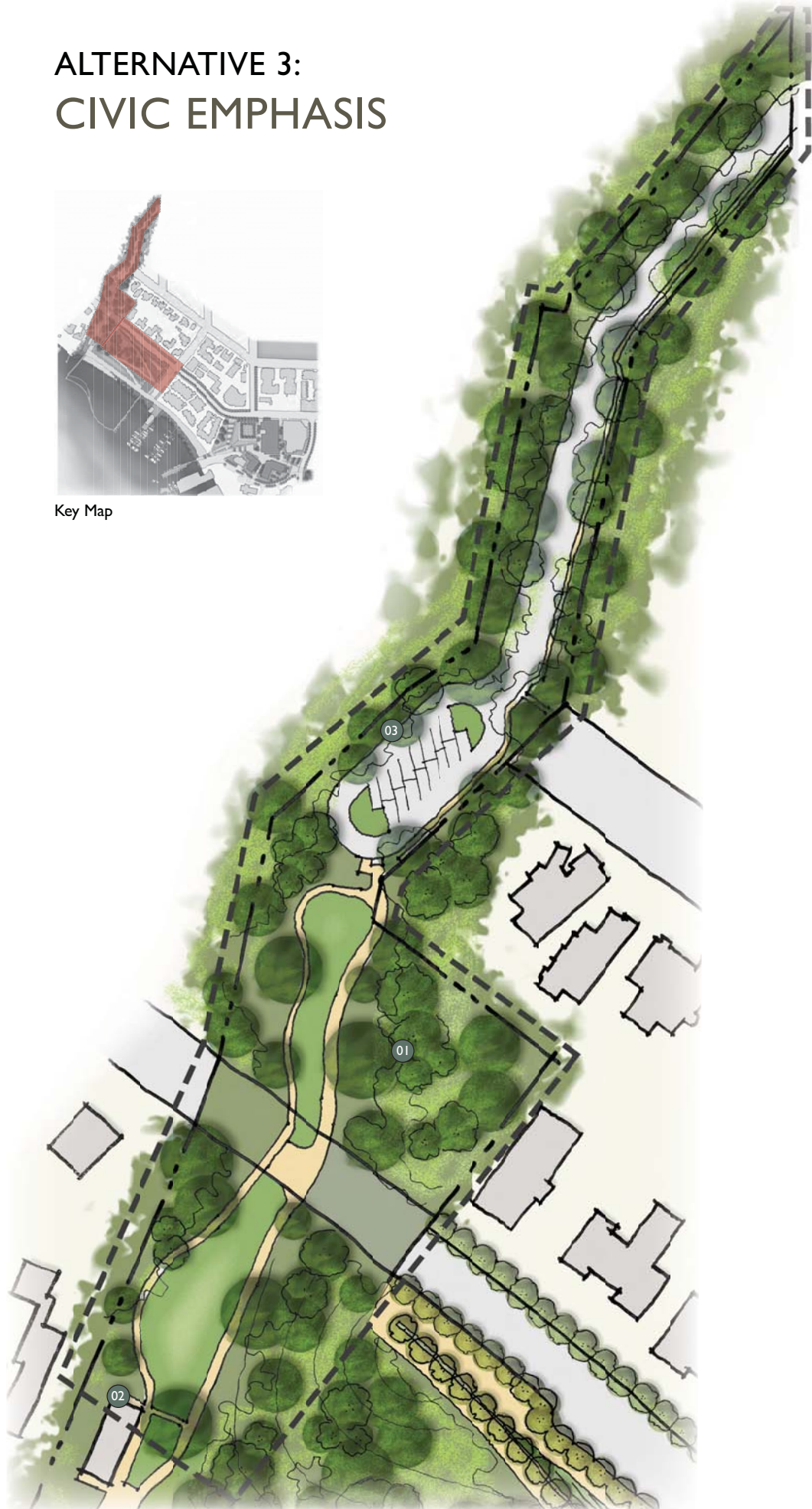
Marina Program	Existing	Alternative 3
Pier Removal	NA	Removes Pier 3 Roof off of Pier 2
Permanent Long-term Moorage	87 slips	37 to 58 slips
Not in Service/Transient	25 slips	14 slips North side of public pier
People Propelled Vessels (PPV)	No facilities	Up to 25 PPV slips Floating boardwalk & South side of public pier
Boat Storage	No facilities	In storage/rental space at end of Meydenbauer Way



ALTERNATIVE 3: CIVIC EMPHASIS



Key Map



Ravine Corridor

- 01 Ravine enhancement (Contiguous canopy forested areas to be retained and enhanced; invasive plants removed)
- 02 Retain existing restroom
- 03 Retain existing paths, roads and parking in ravine



A



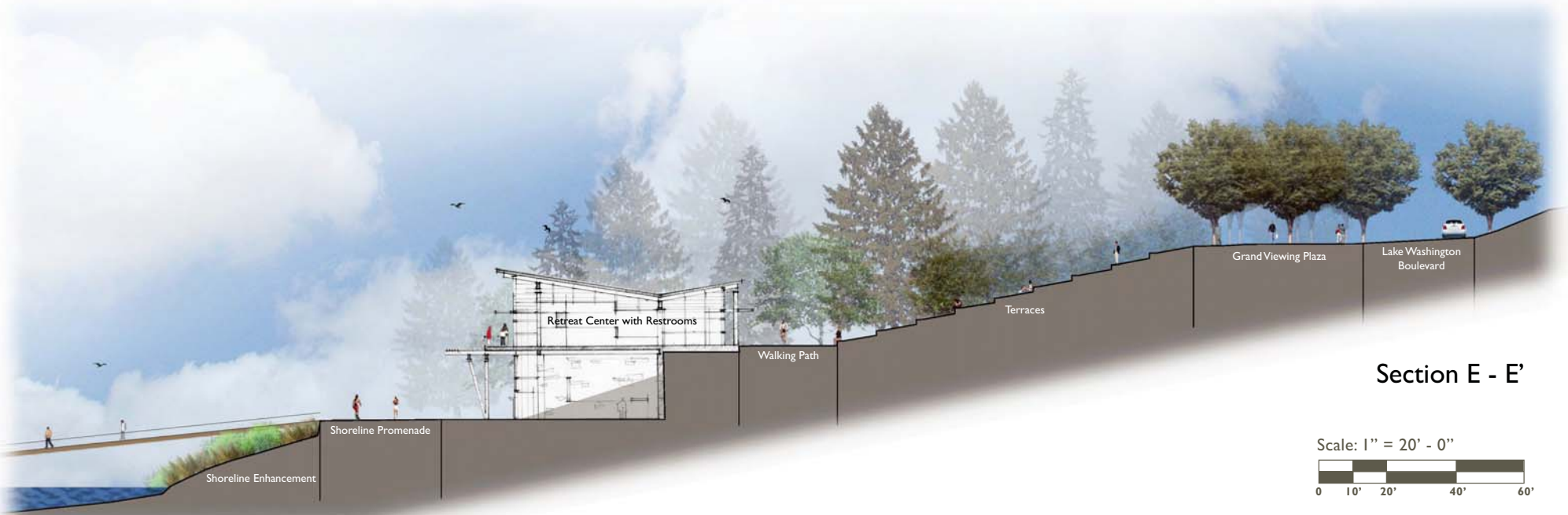
B



Upper Terrace

- 01 Grand viewing plaza and terraces
- 02 ADA path to shoreline promenade
- 03 Parking area (15 to 25 on-street spaces along 99th)
- 04 Enhanced hillside woodland (Removal of invasive species, preservation of significant trees, and planting of native forbs, shrubs and trees)

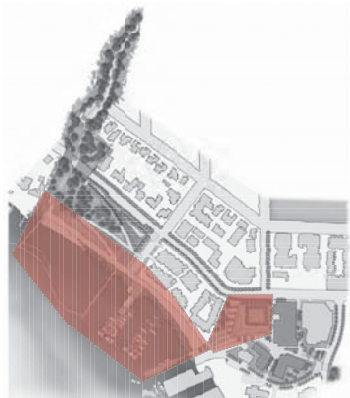
Scale: 1" = 50' - 0"



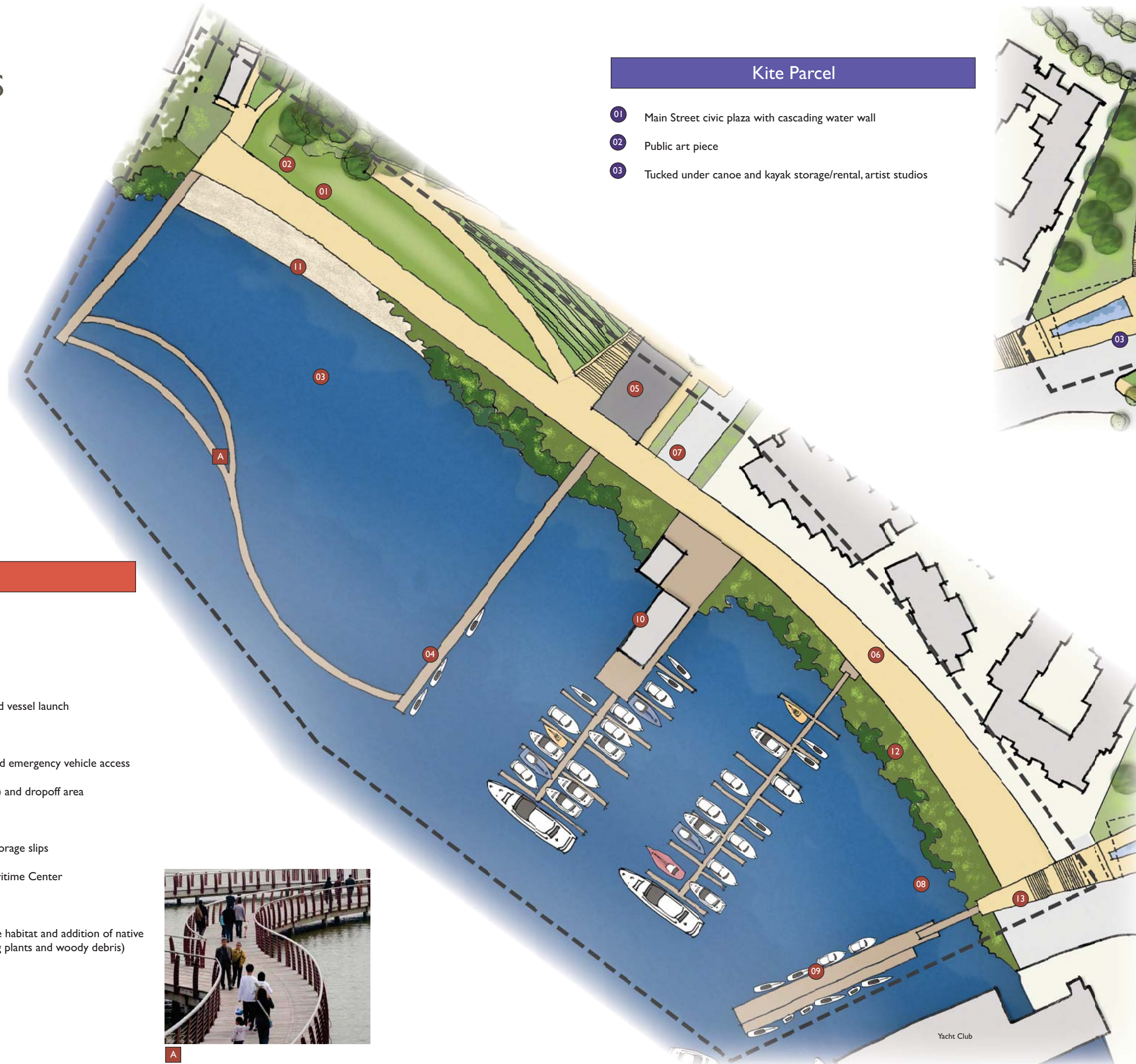
Section E - E'

Scale: 1" = 20' - 0"

ALTERNATIVE 3: CIVIC EMPHASIS

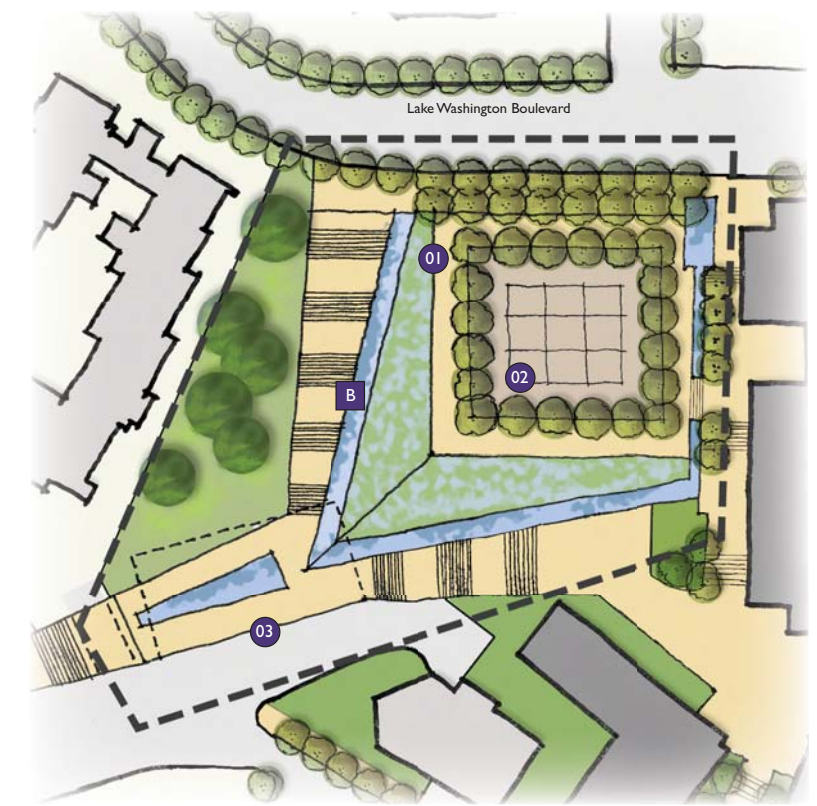


Key Map



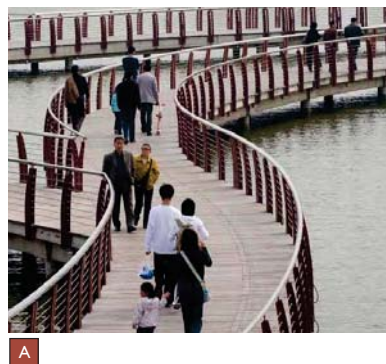
Kite Parcel

- 01 Main Street civic plaza with cascading water wall
- 02 Public art piece
- 03 Tucked under canoe and kayak storage/rental, artist studios



Shoreline

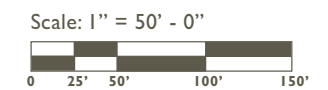
- 01 Playground (for school-aged children)
- 02 Grass picnic area with shade structure
- 03 Swim Theater
- 04 Floating boardwalk with people propelled vessel launch
- 05 Retreat center with restrooms
- 06 Shoreline promenade with pedestrian and emergency vehicle access
- 07 Short-term marina parking (+/- 5 spaces) and dropoff area
- 08 Removal of Pier 3
- 09 Public viewing pier with 14 transient moorage slips
- 10 Whaling Building: Historical/Cultural Maritime Center
- 11 Artificial swim beach
- 12 Enhanced shoreline (improved nearshore habitat and addition of native riparian vegetation, including overhanging plants and woody debris)
- 13 Trail connects Lake-to-Lake Trail system



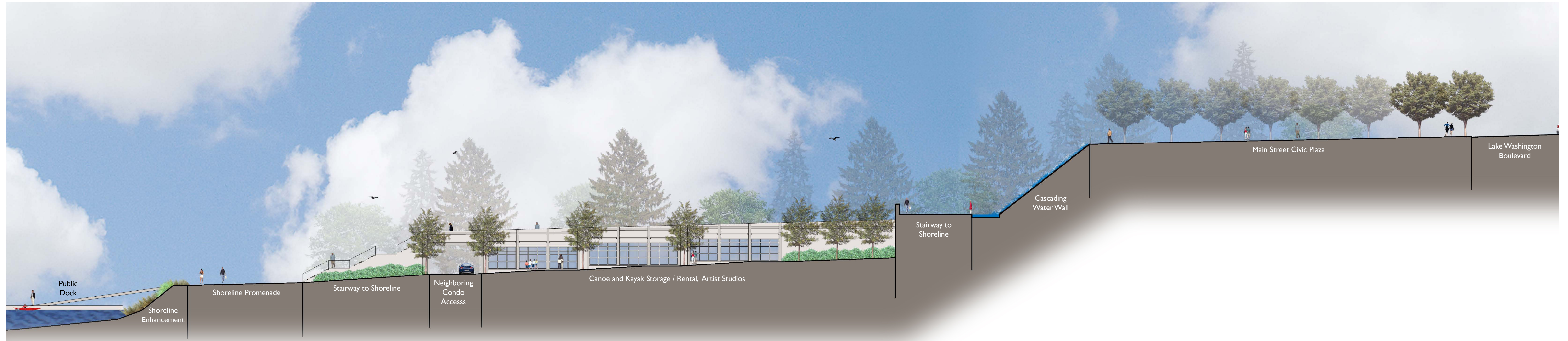
A



B



ALTERNATIVE 3: CIVIC EMPHASIS



Section F - F'
Scale: 1" = 20' - 0"
0 10' 20' 40' 60'



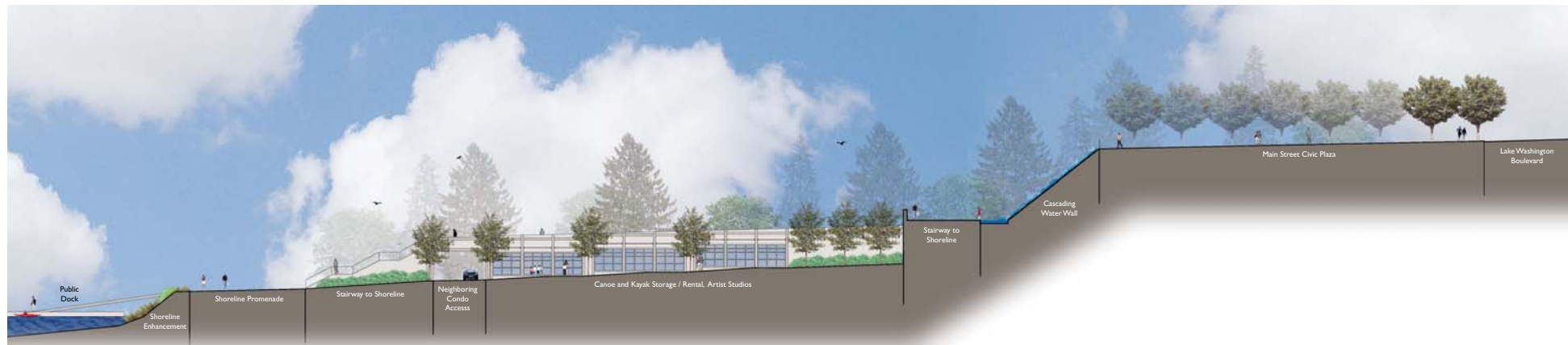
**ALTERNATIVE 1:
EDUCATIONAL EMPHASIS**

Section B - B'
Scale: 1" = 20' - 0"
0 10' 20' 40' 60'



**ALTERNATIVE 2:
SHORELINE EMPHASIS**

Section D - D'
Scale: 1" = 20' - 0"
0 10' 20' 40' 60'



**ALTERNATIVE 3:
CIVIC EMPHASIS**

Section F - F'
Scale: 1" = 20' - 0"
0 10' 20' 40' 60'