

# ALTERNATIVE I: EDUCATIONAL EMPHASIS

## Site Subsections

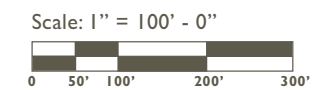
- R Ravine Corridor
- U Upper Terrace
- S Shoreline
- K Kite Parcel



## Park Program Elements

- 01 Fully day-lighted stream with interpretive/education nodes along adjacent pedestrian path
- 02 Ravine enhancements (Contiguous canopy forested areas to be retained and enhanced; invasive plants removed)
- 03 Relocated Wetland (Incorporation of wetlands with the stream/shoreline delta to form a contiguous surface water structure)
- 04 Water detention features (bioswales)
- 05 Upper viewing terrace (+/- 10 short-term parking spaces)
- 06 Surface parking lot (15 to 25 spaces)
- 07 Playground (for school-aged children)
- 08 Grass picnic area with shade structure
- 09 Youth Environmental Education Center: restrooms, gathering space, outdoor education green, and terraced gardens
- 10 Waterfront pathway with pedestrian and emergency vehicle access
- 11 Restrooms (with green roof and interpretive/educational signage)
- 12 Short-term marina parking (10 to 15 spaces) and dropoff area
- 13 Removal of Piers 2 and 3
- 14 Public dock with viewing platform and 14 transient moorage slips
- 15 Integrated ADA accessible terraced walkway with stormwater feature
- 16 Whaling Building: Historical/Cultural Maritime Center
- 17 Enhanced hillside woodland (Removal of invasive species, preservation of significant trees, and planting of native forbs, shrubs and trees)
- 18 Artificial swim beach with people propelled vessel launch
- 19 Softened shoreline (improved nearshore habitat and addition of native riparian vegetation, including overhanging plants and woody debris)
- 20 Trail connects Lake-to-Lake Trail system

Marina Program	Existing	Alternative I
Pier Removal	NA	Removes Piers 2 & 3
Permanent Long-term Moorage	87 slips	18 to 28 slips
Not in Service/Transient	25 slips	14 slips South side of floating pier
People Propelled Vessels (PPV)	No facilities	Up to 15 PPV slips South side of floating pier and at beach
Boat Storage	No facilities	Limited potential on land



# ALTERNATIVE I: EDUCATIONAL EMPHASIS



Key Map



## Ravine Corridor

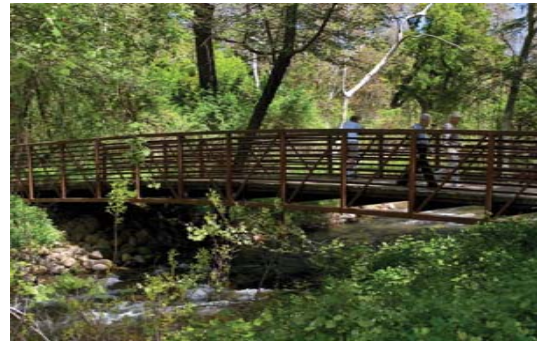
- 01 Fully day-lighted stream
- 02 Interpretive/education nodes along adjacent pedestrian path
- 03 Ravine enhancements (Contiguous canopy forested areas to be retained and enhanced; invasive plants removed)



A



B



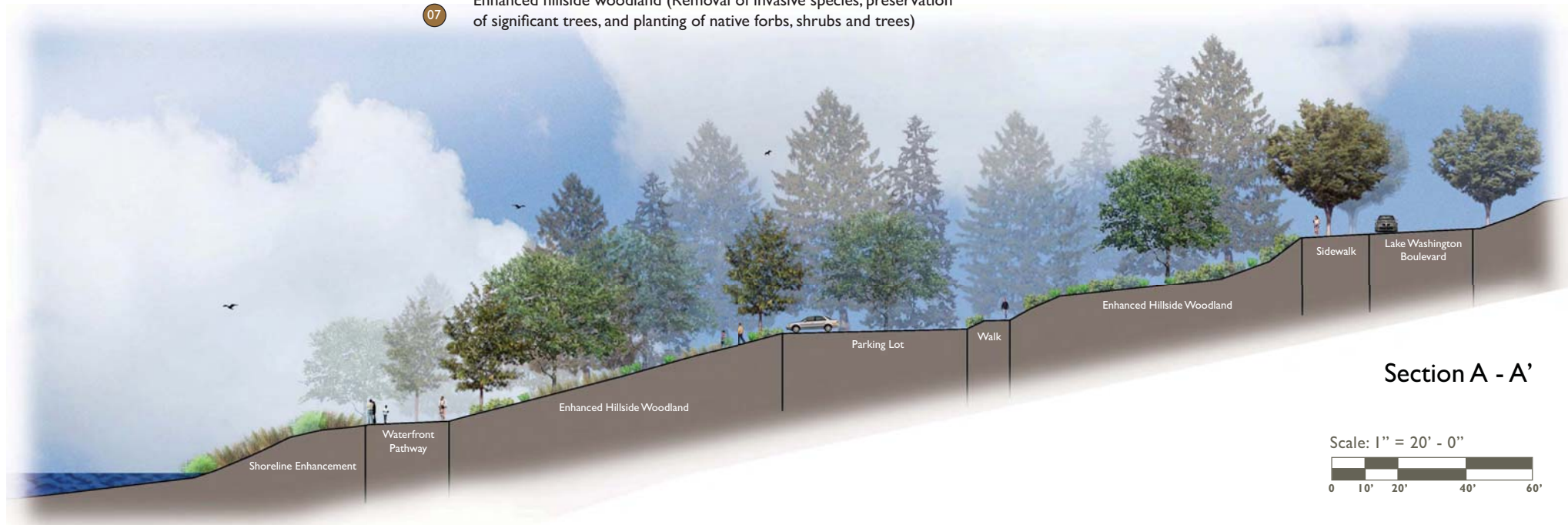
C



## Upper Terrace

- 01 Water detention features (bioswales)
- 02 Upper viewing terrace (+/- 10 short-term parking spaces)
- 03 Surface parking lot (15 to 25 spaces)
- 04 Youth Environmental Education Center: restrooms, gathering space
- 05 Outdoor education green
- 06 Terraced gardens
- 07 Enhanced hillside woodland (Removal of invasive species, preservation of significant trees, and planting of native forbs, shrubs and trees)

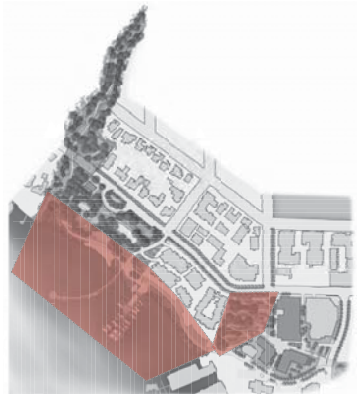
Scale: 1" = 50' - 0"



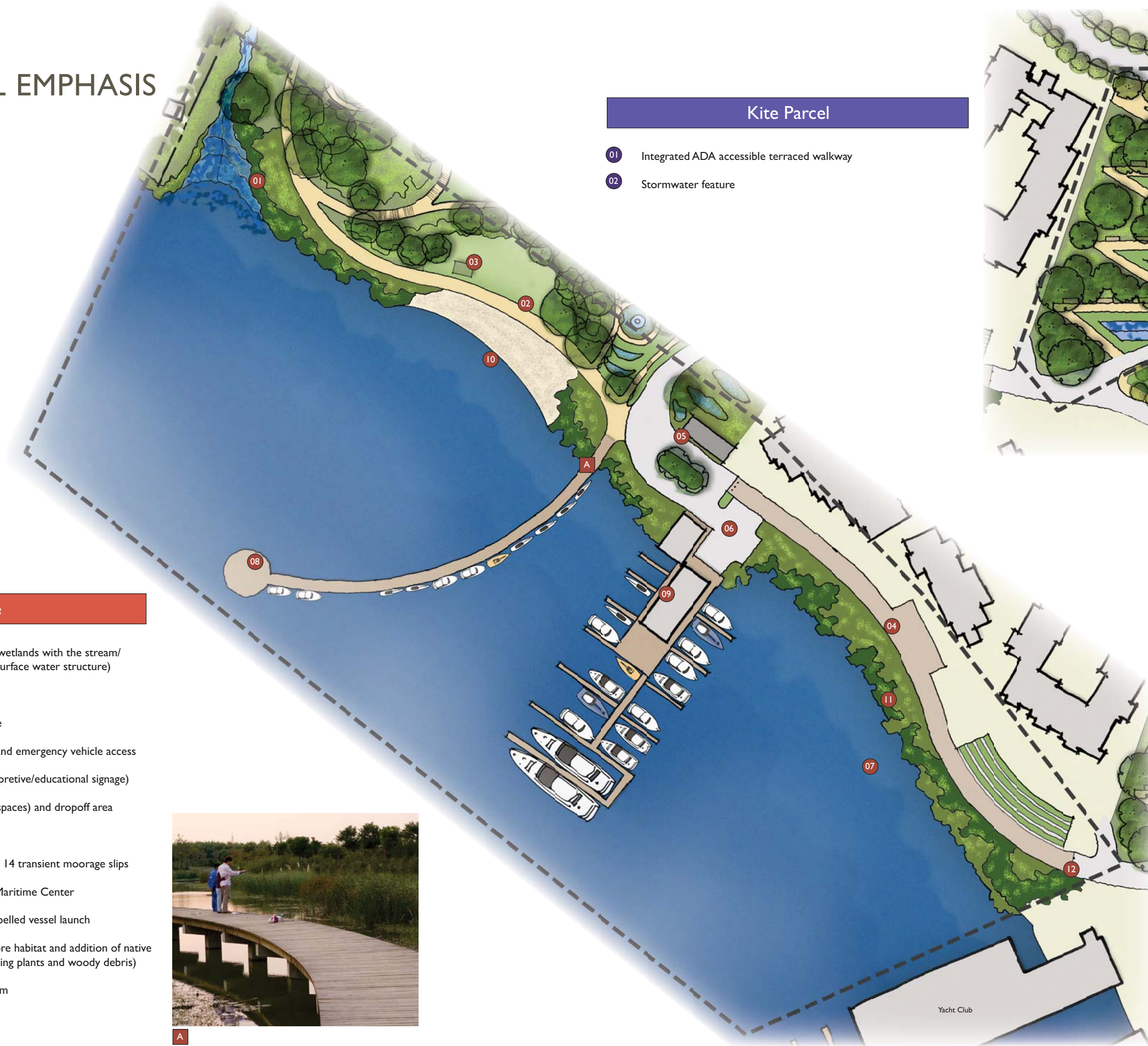
Section A - A'

Scale: 1" = 20' - 0"

# ALTERNATIVE I: EDUCATIONAL EMPHASIS

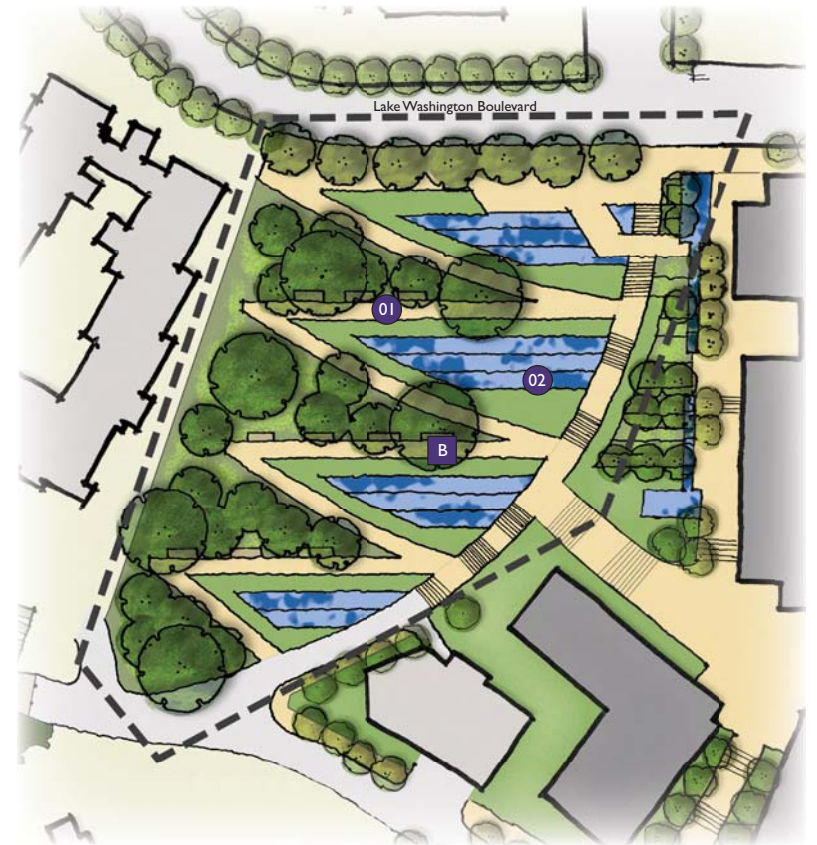


Key Map



## Kite Parcel

- 01 Integrated ADA accessible terraced walkway
- 02 Stormwater feature



## Shoreline

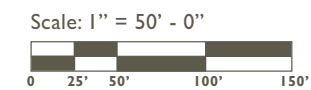
- 01 Relocated Wetland (Incorporation of wetlands with the stream/shoreline delta to form a contiguous surface water structure)
- 02 Playground (for school-aged children)
- 03 Grass picnic area with shade structure
- 04 Waterfront pathway with pedestrian and emergency vehicle access
- 05 Restrooms (with green roof and interpretive/educational signage)
- 06 Short-term marina parking (10 to 15 spaces) and dropoff area
- 07 Removal of Piers 2 and 3
- 08 Public dock with viewing platform and 14 transient moorage slips
- 09 Whaling Building: Historical/Cultural Maritime Center
- 10 Artificial swim beach with people propelled vessel launch
- 11 Softened shoreline (improved nearshore habitat and addition of native riparian vegetation, including overhanging plants and woody debris)
- 12 Trail connects Lake-to-Lake Trail system



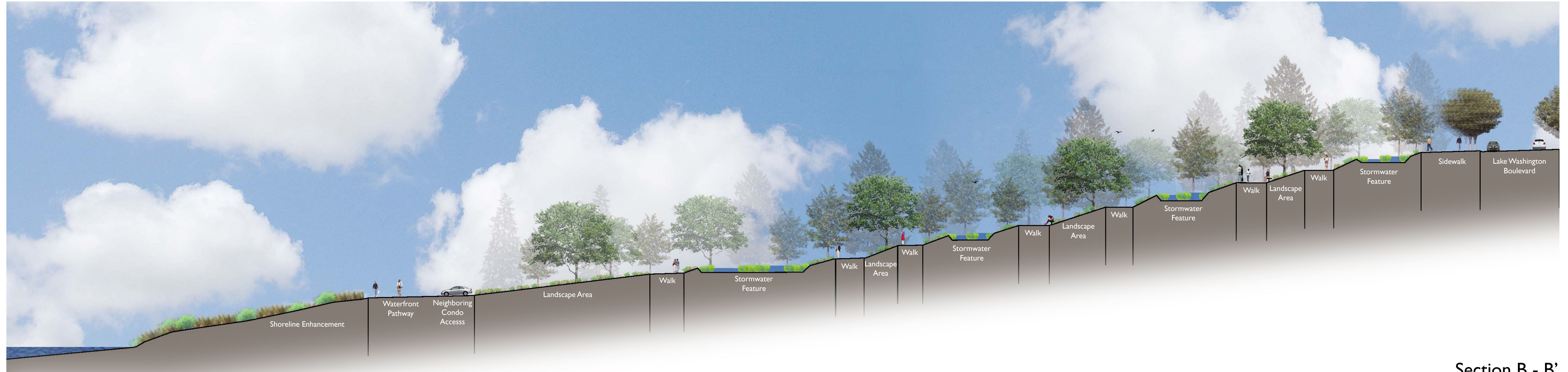
A



B



# ALTERNATIVE I: EDUCATIONAL EMPHASIS



**Section B - B'**  
Scale: 1" = 20' - 0"  
0 10' 20' 40' 60'