

Meydenbauer Bay

PARK AND LAND USE PLAN

EDAW | AECOM

November 2009

DRAFT



DRAFT

thank you!



City Staff

Mike Bergstrom, Project Manager
Robin Cole, Project Manager

Matt Terry
Patrick Foran
Nav Otal
Dan Stroh
Shelley Marelli
Glenn Kost
Paul Inghram
Nancy LaCombe
Lorrie Peterson
Robin Haaseth
Scott Taylor

Consultants

EDAW AECOM
David Blau, Principal
Marilee Stander, Project Manager

Sandy Fischer
Newton Breiter
Brian Scott
Nancy Bird
Jan Mulder
Peter Carr
Amberlynn Pauley
Jeremy Siew
Bonnie McDonald

Moffatt & Nichol
Emy Carpenter
Margaret Shwertner

Perteet
Kris Liljeblad
Steve Sindiong

Cultural Resources Consultants Inc.
Glenn Hartmann

Steering Committee

Doug Leigh, Co-chair
Iris Tocher, Co-chair

Stefanie Beighle

Hal Ferris

Betina Finley

Merle Keeney

Marcelle Lynde

Bob MacMillan

*Kevin Paulich**

David Schooler

Tom Tanaka

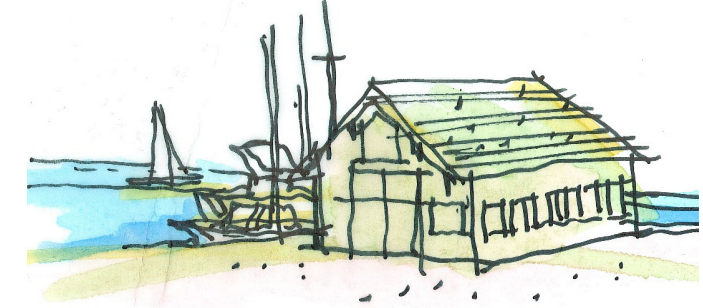
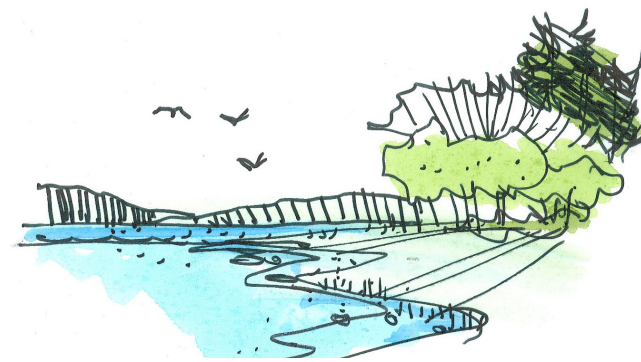
Stu Vander Hoek

Rich Wagner

*Al Yuen**

** former member*

Table of Contents



- 1 Executive Summary** 3
 - Executive Summary 3
- 2 Introduction** 7
 - 2.1 Plan Organization 7
 - 2.2 Program Goals and Objectives 8
 - 2.3 Planning Principles 8
 - 2.4 Planning Process 10
 - 2.5 Steering Committee Recommendations 12
 - Recommendation 13
 - Broader Issues 22
 - Summary of Recommended Plan Concepts .. 23
 - Conclusion 24
- 3 Vision** 28
 - 3.1 Connections 28
 - Waterfront Connections 28
 - Neighborhood Connections 28
 - Downtown Park & Old Bellevue Connections 28
 - 3.2 Public Park Zones 29
 - Ravine 29
 - Central Waterfront 30
 - Lake 30
 - Marina 31
 - Hillside 32
 - Gateway 34
 - 3.3 Properties Adjacent to Public Park Lands 38
 - Uplands 38
 - Yacht Club 40
 - Neighborhoods 40

- 4 Circulation and Public Access** 44
 - 4.1 Vehicular Circulation 44
 - Emergency Access 44
 - Parking 44
 - Transit Service 45
 - 4.2 Pedestrian and Bicycle Circulation 46
 - 4.3 Personal Watercraft 47
- 5 Land Use Strategies** 52
 - 5.1 Land Use Incentives 52
- 6 Design Considerations** 55
 - 6.1 Neighborhood Urban Design 55
 - Architecture & Urban Form 55
 - Height and Setbacks 56
 - Orientation and Entries 56
 - 6.2 Public Streets 56
 - Main Street 57
 - 100th Avenue 57
 - Meydenbauer Way SE 57
 - 6.3 Park Landform, Land Cover, and Shoreline 58
 - Grading 58
 - Planting 59
 - Shoreline 59
 - 6.4 New Public Gathering and Activity Places 60
 - Entry Plaza 60
 - Viewpoints and View Sequences 60
 - Play Area 61
 - Beach 61
 - Piers and Overwater Boardwalks 61

- 7 Design Details** 65
 - 7.1 Landscape 65
 - Pavements 65
 - Lighting 66
 - Furnishings 66
 - Signage and Wayfinding 66
 - Art 67
 - Water Features 67
 - 7.2 Park Architecture 68
 - New Buildings 68
 - Historic Buildings 69
 - Bridges, Piers, Overlooks, and Shelters 69
- 8 Funding Sources and Strategies** 73
 - Local Funding Sources 73
 - County, State, and Federal Funding Sources 74
 - Other Strategies 75
 - NonGovernmental Sources 75
- 9 Estimate of Probable Cost** 79
 - 9.1 Plan Level Costs, Phasing and Implementation Strategies 79
 - Project Budget Summary by Park Zone 81
- 10 References** 87
 - References 87

List of Figures

- Figure 1.0-1: Historic Ice House and Whaling Building at Bellevue Marina 3
- Figure 1.0-2: Whaling Boats Docked in Meydenbauer Bay, Bellevue, ca. 1937
(Image Courtesy Eastside Heritage Center, L85.39.1) 4
- Figure 1.0-3: Passengers Disembarking from Ferry, Bellevue, 1914
(Image Courtesy Eastside Heritage Center, 1995.123.02)..... 4
- Figure 1.0-4: Bellevue Ferry Dock, Bellevue, ca. 1917
(Image Courtesy Eastside Heritage Center, 2002.125.03)..... 4
- Figure 1.0-5: Meydenbauer Park in Bellevue in 1936 (Image Courtesy Eastside Heritage Center, L84.13) ... 4
- Figure 2.1-1: Vicinity Map..... 7
- Figure 2.4-1: June 2008 Park Alternatives Public Workshop 10
- Figure 2.5-1: Example of Park Activities..... 13
- Figure 2.5-2: Example of Park Activities..... 13
- Figure 2.5-3: Example of Restored Shoreline (EDAW AECOM) 14
- Figure 2.5-4: Improved Streetscape along Main Street/Lake Washington
Boulevard Connects to New Entry Plaza..... 14
- Figure 2.5-5: View of 100th Avenue SE..... 15
- Figure 2.5-6: Simulation of Improved Pedestrian Access to Waterfront along 100th Avenue Corridor 15
- Figure 2.5-7: Reconfigured Marina - Expanded Pier 1 16
- Figure 2.5-8: Example of Public Pedestrian Pier (EDAW AECOM)..... 17
- Figure 2.5-9: Elevated Viewing Platform Provides Unobstructed Views of the Bay..... 18
- Figure 2.5-10: Bellevue Marina Pier 1 18
- Figure 2.5-11: People Powered Vessels (PPV) Rentals 20
- Figure 2.5-12: Lewis Creek Community Center (Miller Hull) 21
- Figure 2.5-13: Whaling Boats Docked in Meydenbauer Bay, Bellevue, ca. 1925
(Image Courtesy Eastside Heritage Center, L 85.39.2) 21
- Figure 2.5-14: Example of a Footbridge over Restored Wetlands (EDAW AECOM) 23
- Figure 3.0-1: Meydenbauer Bay Park and Land Use Plan 27
- Figure 3.1-1: Early Park Connection Concept Diagram 28
- Figure 3.2-1: Ravine Enlargement Plan..... 29
- Figure 3.2-2: Central Waterfront Enlargement Plan 30
- Figure 3.2-3: Marina Enlargement Plan 31
- Figure 3.2-4: Hillside Enlargement Plan..... 32
- Figure 3.2-5: Section/Elevation A-A' Hillside and Central Waterfront Zones 33
- Figure 3.2-6: Gateway Enlargement Plan..... 34
- Figure 3.2-7: Section/Elevation B-B' Gateway Zone 35
- Figure 3.2-8a: Visual Simulation of Meydenbauer Bay Park's Entry Plaza at the Gateway Zone..... 36
- Figure 3.2-8b: Photo Looking West from the Intersection of 100th Avenue and Main Street 36
- Figure 3.2-9a: Visual Simulation of Meydenbauer Bay Park's Lower Entry Plaza at the Gateway Zone 37
- Figure 3.2-9b: Photo Looking Northeast from the Western Terminus of Meydenbauer Way SE 37
- Figure 3.3-1: South of Main Enlargement Plan..... 38
- Figure 3.3-2a: Visual Simulation of Meydenbauer Bay Park from Meydenbauer Bay 39
- Figure 3.3-2b: Photo Looking Northeast from Meydenbauer Bay 39
- Figure 3.3-3: Youth Sailing Programs 40
- Figure 3.3-4: Meydenbauer Bay Yacht Club 40
- Figure 4.0-1: Park Connections (Sasaki 2008)..... 43

- Figure 4.1-1: Vehicular Circulation Diagram 44
- Figure 4.1-2: Parking Diagram 44
- Figure 4.1-3: Local Area Bus Routes 45
- Figure 4.2-1: Non-motorized Circulation 46
- Figure 4.2-2: Bicycle Circulation 47
- Figure 4.2-3: Personal Watercraft 47
- Figure 5.0-1: Study Area Zoning Diagram 51
- Figure 5.1-1: Existing Bellevue Building Heights (Sasaki 2008) 52
- Figure 6.1-1: Surrounding Context..... 55
- Figure 6.1-2: Example of Active Streets (EDAW AECOM)..... 56
- Figure 6.2-1: Main Street, Bellevue, WA..... 57
- Figure 6.2-2: Victoria Park Bio-swale (Landcom) 57
- Figure 6.2-3: Example of Neighborhood Street with Multi-modal Access..... 57
- Figure 6.3-1: Meydenbauer Bay Park Proposed Grading Plan 58
- Figure 6.3-2: Restored Shoreline Sketch 59
- Figure 6.4-1: Morton Arboretum Play Area 61
- Figure 6.4-2: Existing Beach at Meydenbauer Beach Park..... 61
- Figure 6.4-3: Example of Overwater Walkway..... 61
- Figure 7.1-1: Park Paving Material Options: 65
- Figure 7.1-2: Example of Low Level Signature Lighting (EDAW AECOM) 66
- Figure 7.1-3: Example of Custom Designed Wood Bench (EDAW AECOM) 66
- Figure 7.1-4: Example of Interpretation and Education Signage (EDAW AECOM) 66
- Figure 7.1-5: Example of Public Art Integration (EDAW AECOM) 67
- Figure 7.1-6: Example of Interactive Water Feature(EDAW AECOM) 67
- Figure 7.2-1: Example of Building and Site Integration (Miller Hull)..... 68
- Figure 7.2-2: Example of Northwest Style Architecture (Miller Hull) 68
- Figure 7.2-3: Example of Generous Overhangs for Shelter and Shade (Miller Hull)..... 68
- Figure 7.2-4: Example of Building Tucked into Hillside 68
- Figure 7.2-5: Example of Building Tucked into Hillside 68
- Figure 7.2-6: Historic Whaling Building at Bellevue Marina 69
- Figure 7.2-7: Example of Park Overlook Structure (EDAW AECOM) 69
- Figure 8.0-1: Daylighted Stream Section 73
- Figure 8.0-2: Recommended Streetscape Improvements 74
- Figure 9.1-1: Project Phasing Diagram..... 79

List of Tables

- Table 9.1-1: Budget Summary Table 79
- Table 9.1-2: Ravine Zone Budget Summary..... 81
- Table 9.1-3: Central Waterfront Zone Budget Summary 81
- Table 9.1-4: Marina Zone Summary 82
- Table 9.1-5: Hillside Zone Budget Summary..... 82
- Table 9.1-6: Gateway Zone Budget Summary 83
- Table 9.1-7: Streetscapes Budget Summary..... 83



1

Executive Summary



A

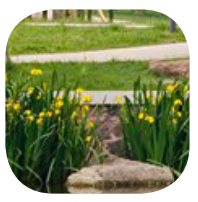


A Figure 1.0-1: Historic Ice House and Whaling Building at Bellevue Marina

CHAPTER 1: EXECUTIVE SUMMARY

The City of Bellevue has long had a vision of connecting the Meydenbauer Bay waterfront to Downtown Park to create a signature park and waterfront destination. In 1953 King County conveyed a small parcel to the City to use for park purposes. With acquisition of a small adjacent parcel soon after, the City improved the existing Beach Park. In 1987 the City’s Park, Recreation, and Open Space Plan identified acquisition of the Meydenbauer Bay waterfront as a major focus to provide unequaled waterfront amenities and connect the waterfront to Downtown Park and the downtown. Since the late 1990s, Bellevue has acquired land along Meydenbauer Bay as it became available, to expand Meydenbauer Beach Park and provide an important recreational opportunity for its citizens. The City Council recognized the need to plan for the ultimate goal of achieving a connection of this key waterfront area to the downtown area and enhancing the surrounding area.

In 2007, the City Council appointed the Meydenbauer Bay Park and Land Use Plan Steering Committee (Steering Committee) to serve in an advisory capacity to the Council, Planning Commission and Parks Board. Representing various neighborhoods and citywide interests, the Steering Committee was charged with guiding staff in public outreach and development of draft alternatives for both the park master plan and the neighboring upland area, evaluating those alternatives, and ultimately recommending final land use and



park master plan alternatives and actions to implement the vision. The Steering Committee's work was guided by broad planning principles approved by the Council for the project.

The City initiated its planning process for the Meydenbauer Bay Park and Land Use Plan (the Plan) in early 2007, which resulted in a Preliminary Preferred Land Use Plan (PPLUP) for land uses and development intensity in the upper block and south of Main Street portion of the study area (Sasaki 2008). When the City continued its planning process with a focus on the new waterfront park in May 2008, it also focused on reintegrating the new park and uplands, with greater attention to the edge condition and relationship of these two important components of the Plan.

The Plan illustrates potential building masses, siting, relationships, and concepts for the upland area that provide pedestrian connections between the new waterfront park and upland areas, as well as physical and interactive spaces and amenities that reinforce the pedestrian experience and the connection of the waterfront to nearby upland areas. The Plan envisions the closure of 100th Avenue SE, and coordinated redevelopment of several parcels of land under different ownerships (including one City-owned parcel). The Plan proposes modest policy and regulatory changes to provide some degree of incentive (other than increasing building height or allowing new uses) that could improve the pedestrian environment along the edges of the upper block.

The Plan calls for the development of a memorable waterfront park that will attract people year round with a variety of uses and thoughtfully designed places that respect the setting, express community environmental values, and sup-

port a range of active and passive activities. The waterfront and park are planned to be both a respite within the city and a connection between the city and the lake. The park will be a pedestrian place that encourages contemplation, socializing, and recreation; welcoming visitors who arrive by boat, car, bus, and bicycle or on foot. Streetscape improvements are recommended for several nearby streets with an emphasis on improving pedestrian amenities, safety, and connections to surrounding neighborhoods, Downtown Park, Old Bellevue, and downtown Bellevue.



A *Figure 1.0-2: Whaling Boats Docked in Meydenbauer Bay, Bellevue, ca. 1937 (Image Courtesy Eastside Heritage Center, L85.39.1)*



B *Figure 1.0-3: Passengers Disembarking from Ferry, Bellevue, 1914 (Image Courtesy Eastside Heritage Center, 1995.123.02)*



C *Figure 1.0-4: Bellevue Ferry Dock, Bellevue, ca. 1917 (Image Courtesy Eastside Heritage Center, 2002.125.03)*



D *Figure 1.0-5: Meydenbauer Park in Bellevue in 1936 (Image Courtesy Eastside Heritage Center, L84.13)*