

ALTERNATIVE #1



ALTERNATIVE #2



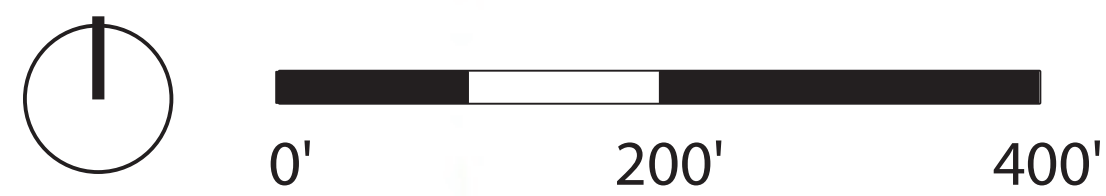
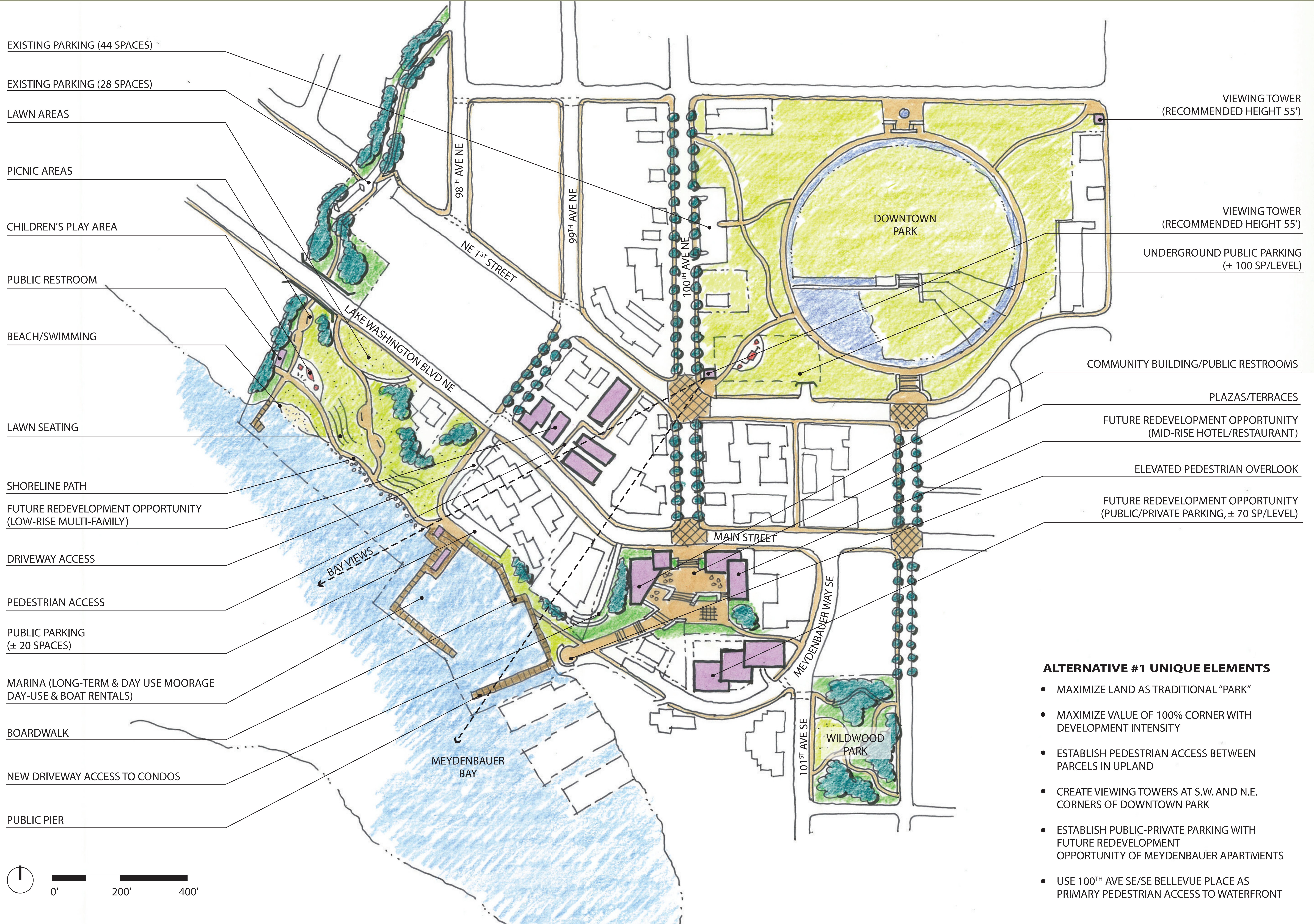
ALTERNATIVE #3



- LAND USE STRATEGIES
- PARKING STRATEGIES
- STREETScape IMPROVEMENTS ALONG 99TH, 100TH, AND 102ND FOR EMPHASIS ON VIEW CORRIDORS TO WATERFRONT
- PEDESTRIAN CONNECTIONS FROM DOWNTOWN PARK TO WATERFRONT
- PEDESTRIAN WALKS/TRAILS/PATHS CONNECTING DOWNTOWN, WILDWOOD, AND MEYDENBAUER BEACH PARKS
- PEDESTRIAN PROMENADE / BOARDWALK
- PUBLIC GATHERING AREAS
- BEACH / SWIMMING AREA
- LAWN AND PICNIC AREAS
- CHILDREN'S PLAY AREA
- DAY-USE MOORAGE
- LONG TERM MOORAGE
- PUBLIC PIER

*The information in this material was compiled, written, and/or prepared by an independent consultant, and does not represent any endorsement, approval, or recommendation by the City of Bellevue.

ALTERNATIVE #1

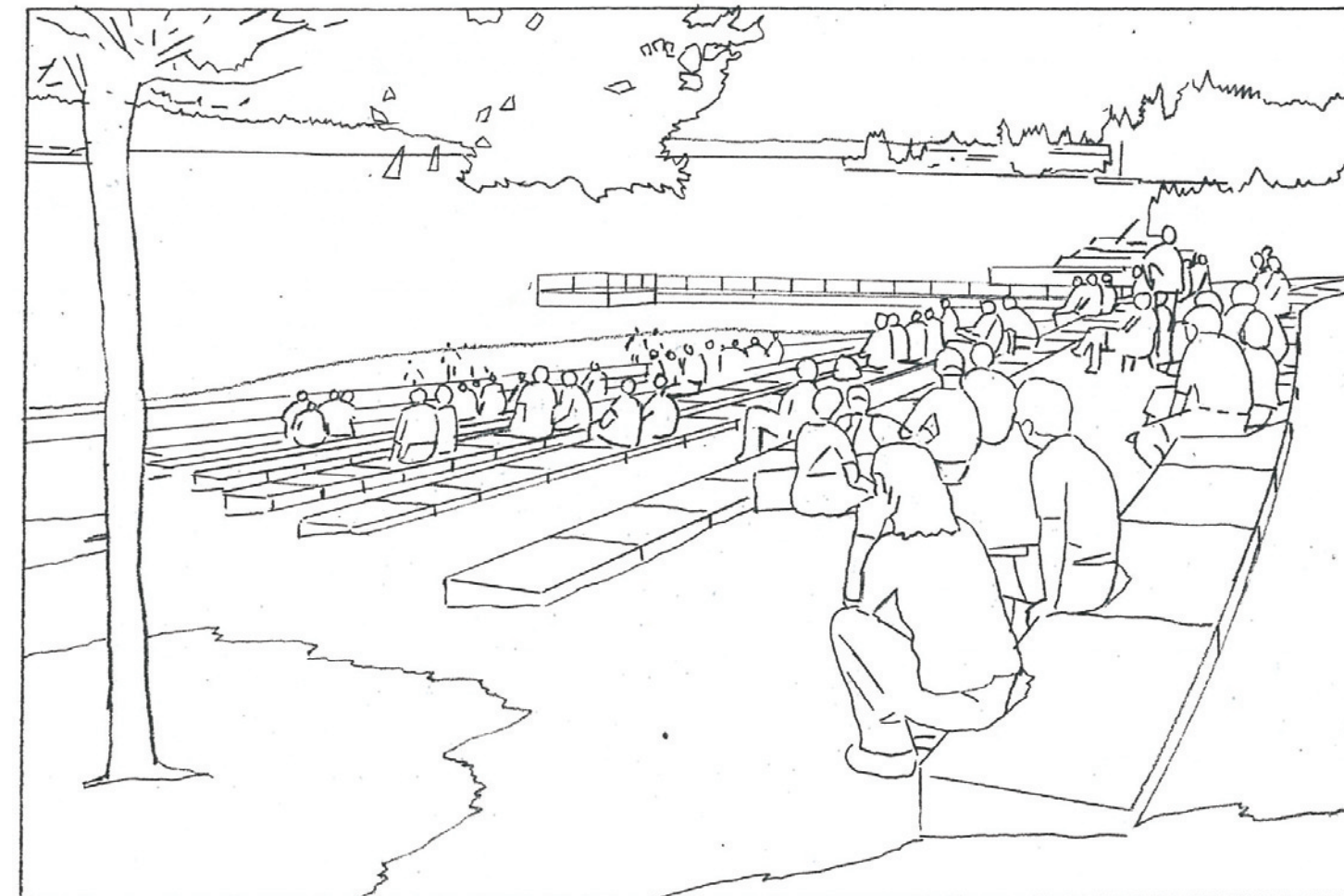


*The information in this material was compiled, written, and/or prepared by an independent consultant, and does not represent any endorsement, approval, or recommendation by the City of Bellevue.

ALTERNATIVE #1



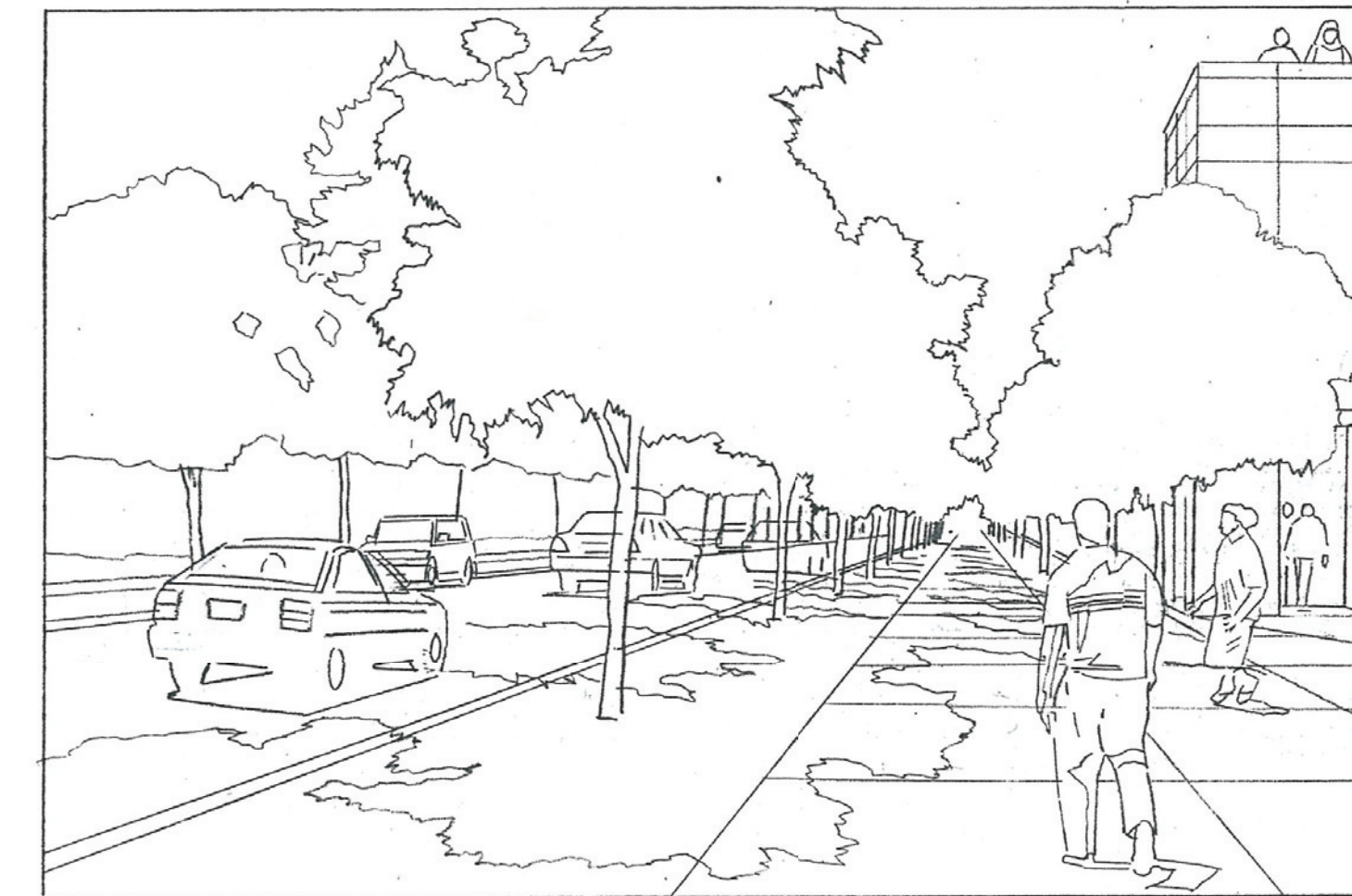
PLAZAS



LAWN SEATING



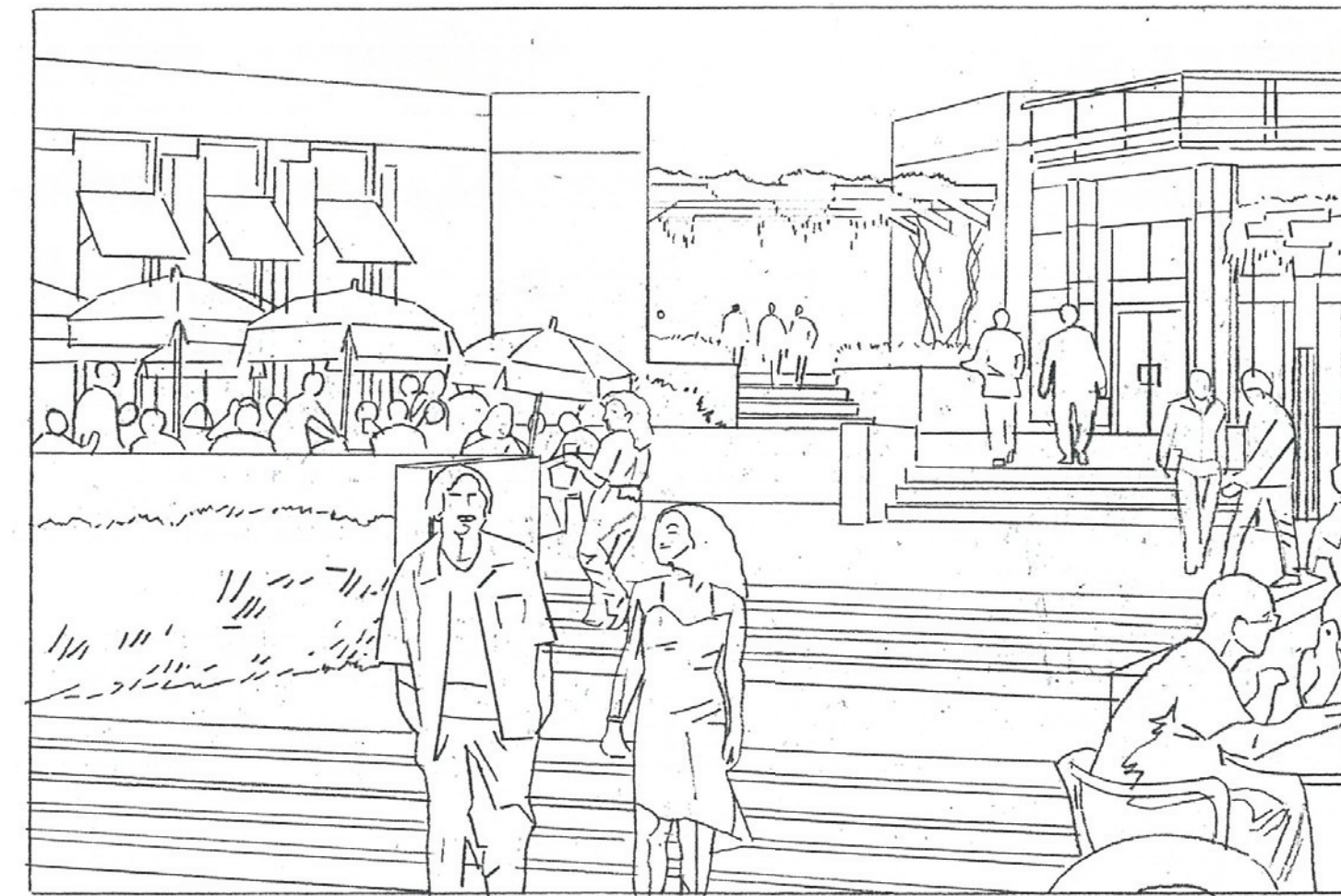
PLAZAS



100TH AVE STREETSCAPE



LAWN AREAS



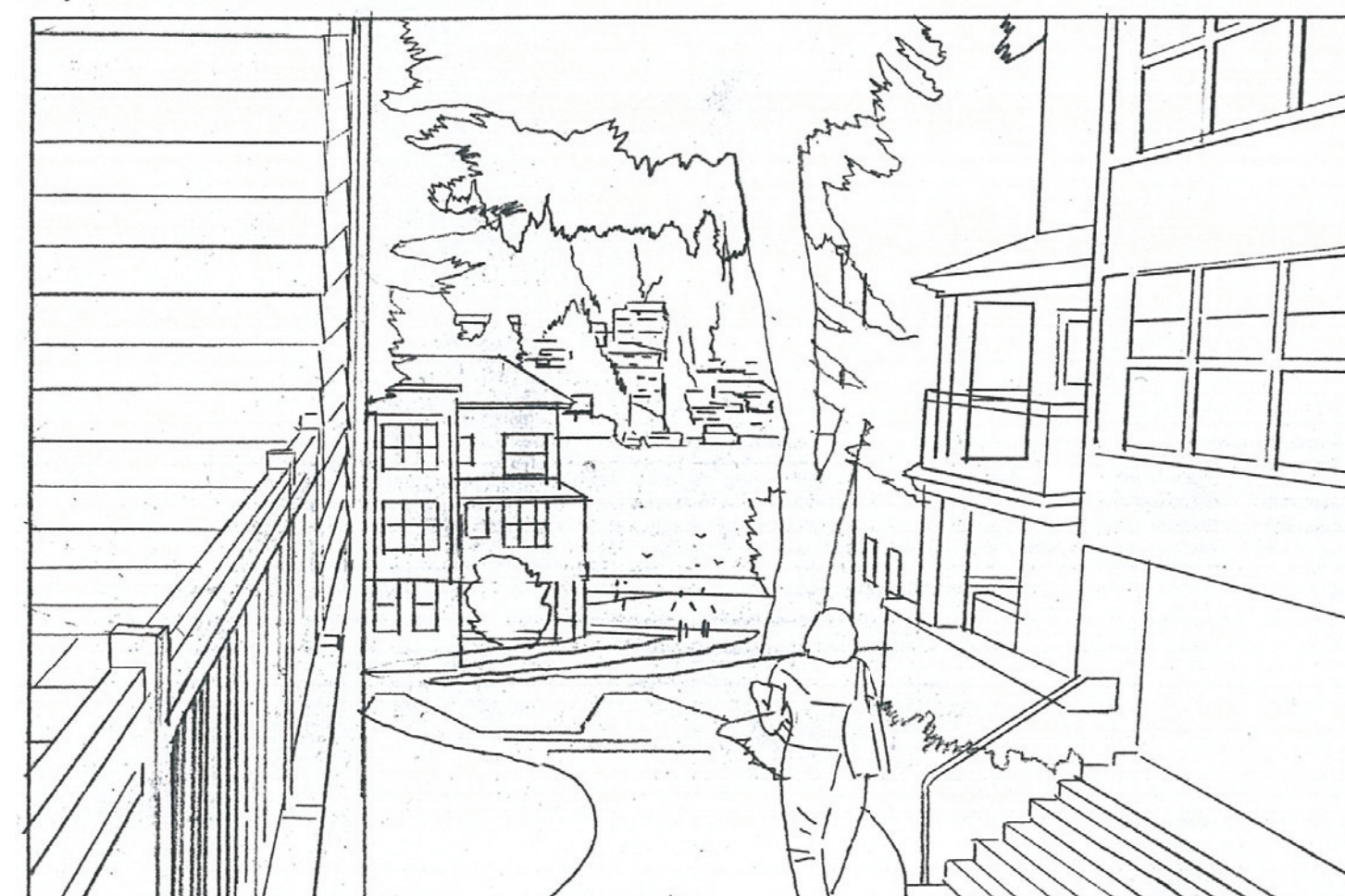
PLAZAS/TERRACES



CHILDREN'S PLAY AREA



LAWN SEATING



PEDESTRIAN ACCESS



SHORELINE PATH

*The information in this material was compiled, written, and/or prepared by an independent consultant, and does not represent any endorsement, approval, or recommendation by the City of Bellevue.

ALTERNATIVE #2

EXISTING PARKING (44 SPACES)

STREAM RESTORATION

PATH/FOOTBRIDGES

VISTA POINT w/PARKING
(± 20 SPACES)

GARDEN PATHS

PUBLIC RESTROOM

LAWN AREAS

BEACH/SWIMMING

PEDESTRIAN ACCESS THROUGH
FUTURE REDEVELOPMENT OPPORTUNITY
(LOW-RISE HOTEL) w/PUBLIC-PRIVATE PARKING
(± 100 SP/LEVEL)

PICNIC AREAS

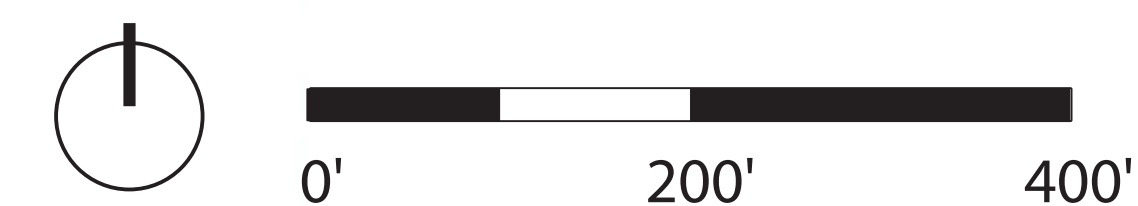
MARINA (LONG-TERM & DAY USE MOORAGE
& BOAT RENTALS)

BOARDWALK

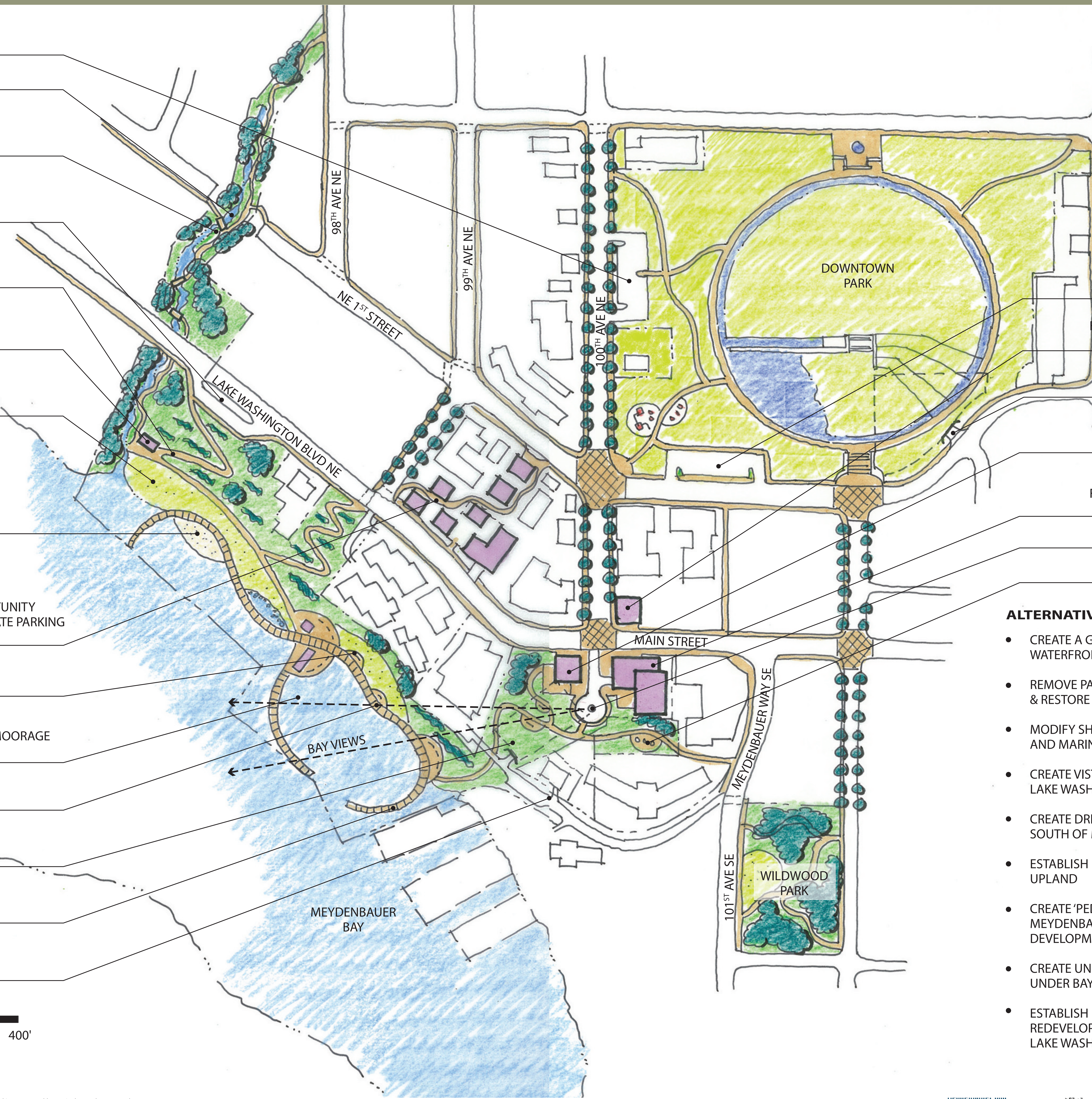
UNDERGROUND PUBLIC PARKING
(± 80 SP/LEVEL)

PUBLIC PIER

DRIVEWAY w/LIMITED PARKING



*The information in this material was compiled, written, and/or prepared by an independent consultant, and does not represent any endorsement, approval, or recommendation by the City of Bellevue.



EXISTING PARKING
(55 SPACES)

FUTURE REDEVELOPMENT OPPORTUNITY
(RETAIL)

UNDERGROUND PUBLIC PARKING
(± 100 SP/LEVEL)

RESTAURANT/PUBLIC RESTROOM

FUTURE REDEVELOPMENT OPPORTUNITY
(RETAIL/CONDO)

CIRCULAR DRIVE/OVERLOOK

PICNIC AREA

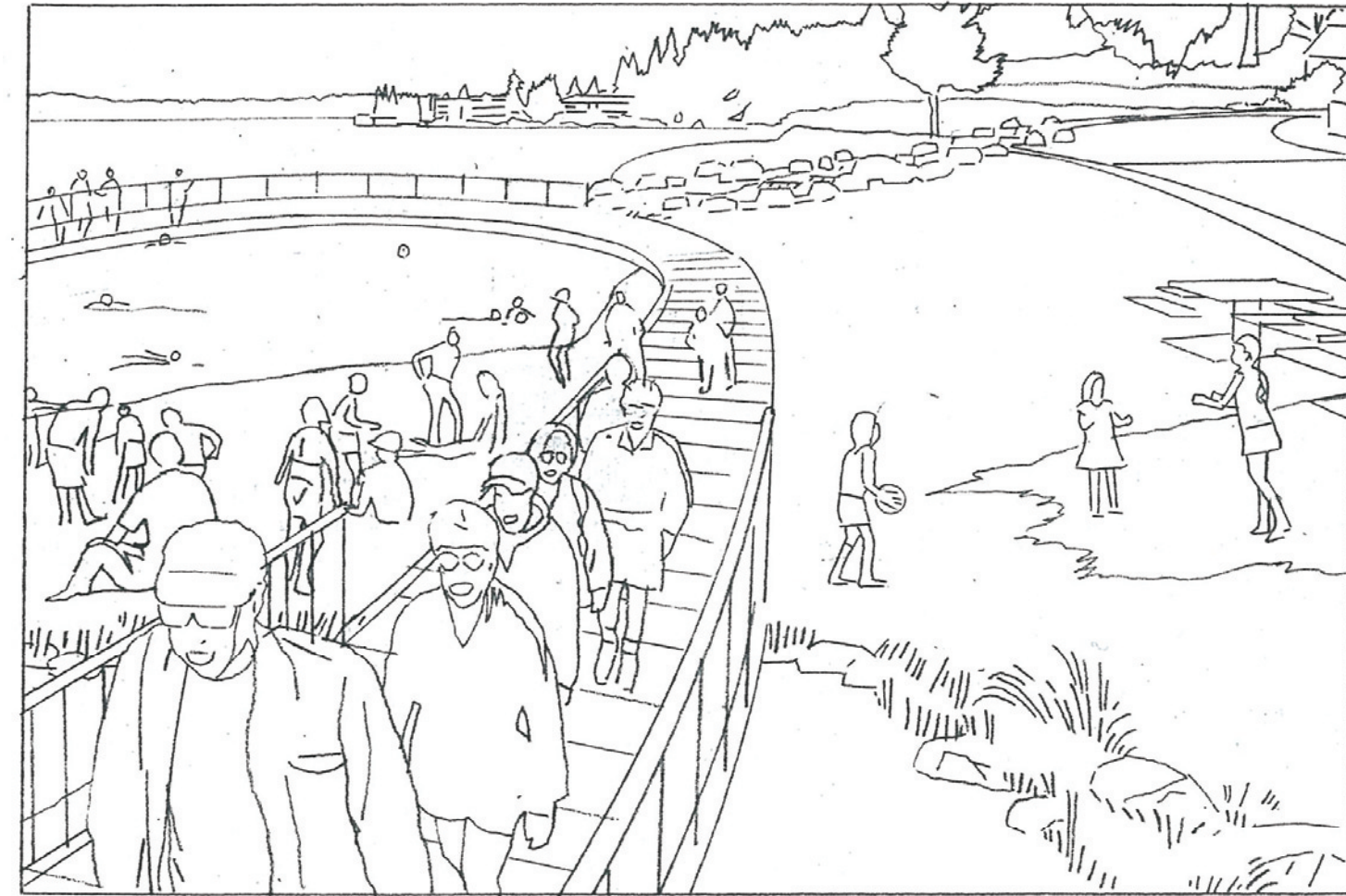
ALTERNATIVE #2 UNIQUE ELEMENTS

- CREATE A GARDEN SETTING ALONG THE WATERFRONT
- REMOVE PARKING & VEHICULAR ACCESS IN RAVINE & RESTORE STREAM
- MODIFY SHORELINE FOR NEW BEACH AREA AND MARINA
- CREATE VISTA POINT WITH PARKING ALONG LAKE WASHINGTON BLVD.
- CREATE DRIVEWAY & OVERLOOK AT 100TH AVE SOUTH OF MAIN ST.
- ESTABLISH PEDESTRIAN ACCESS BETWEEN PARCELS IN UPLAND
- CREATE 'PEDESTRIAN-FRIENDLY DRIVEWAY' IN LIEU OF MEYDENBAUER PLACE FOR ACCESS TO LIMITED DEVELOPMENTS & PARKING STRUCTURE
- CREATE UNDERGROUND PUBLIC PARKING IN HILLSIDE UNDER BAYVUE APARTMENTS SITE
- ESTABLISH PUBLIC/PRIVATE PARKING WITH FUTURE REDEVELOPMENT OPPORTUNITY OF PARCELS ALONG LAKE WASHINGTON BLVD.

ALTERNATIVE #2



DRIVEWAY



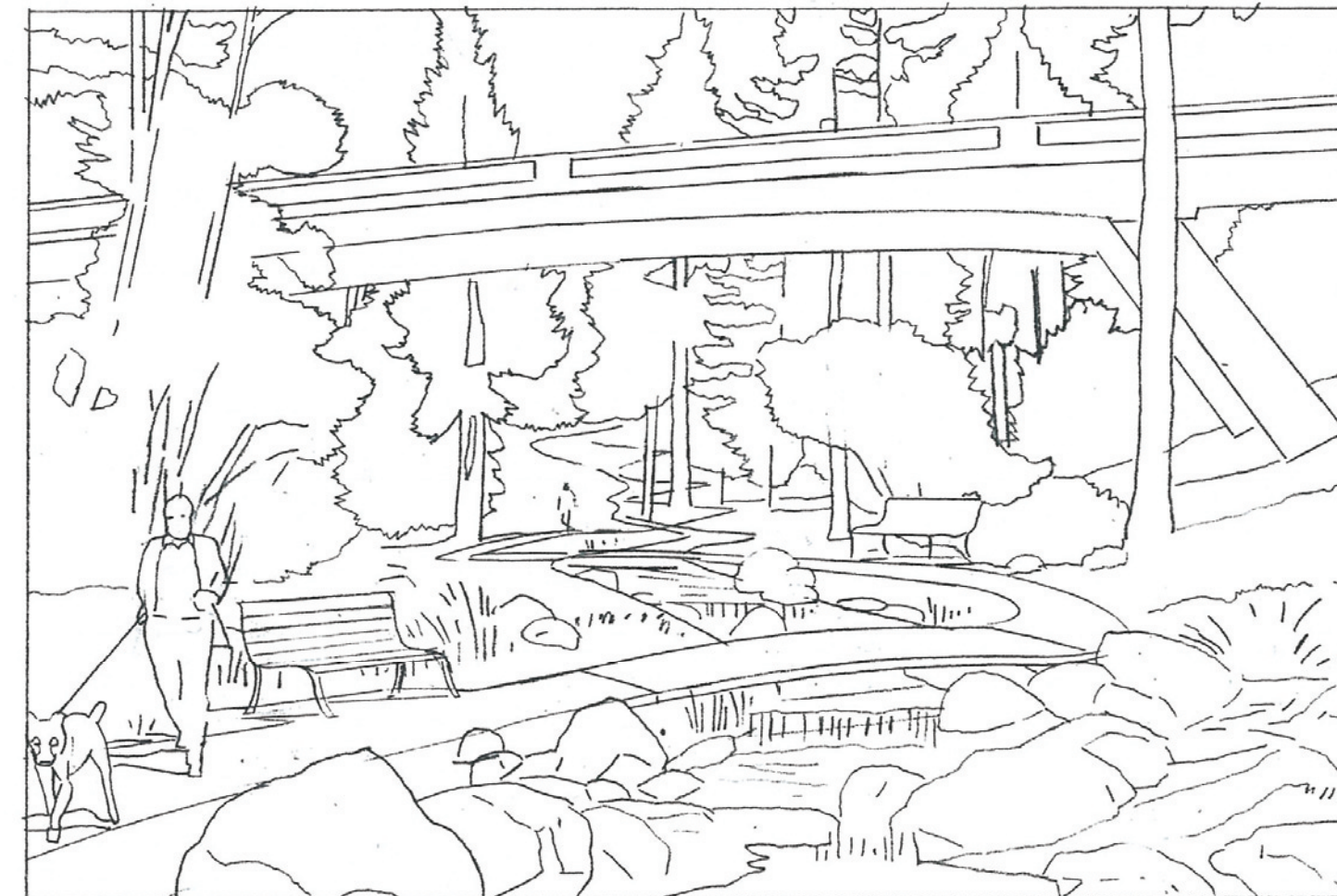
BOARDWALK



GARDEN PATHS



BOARDWALK



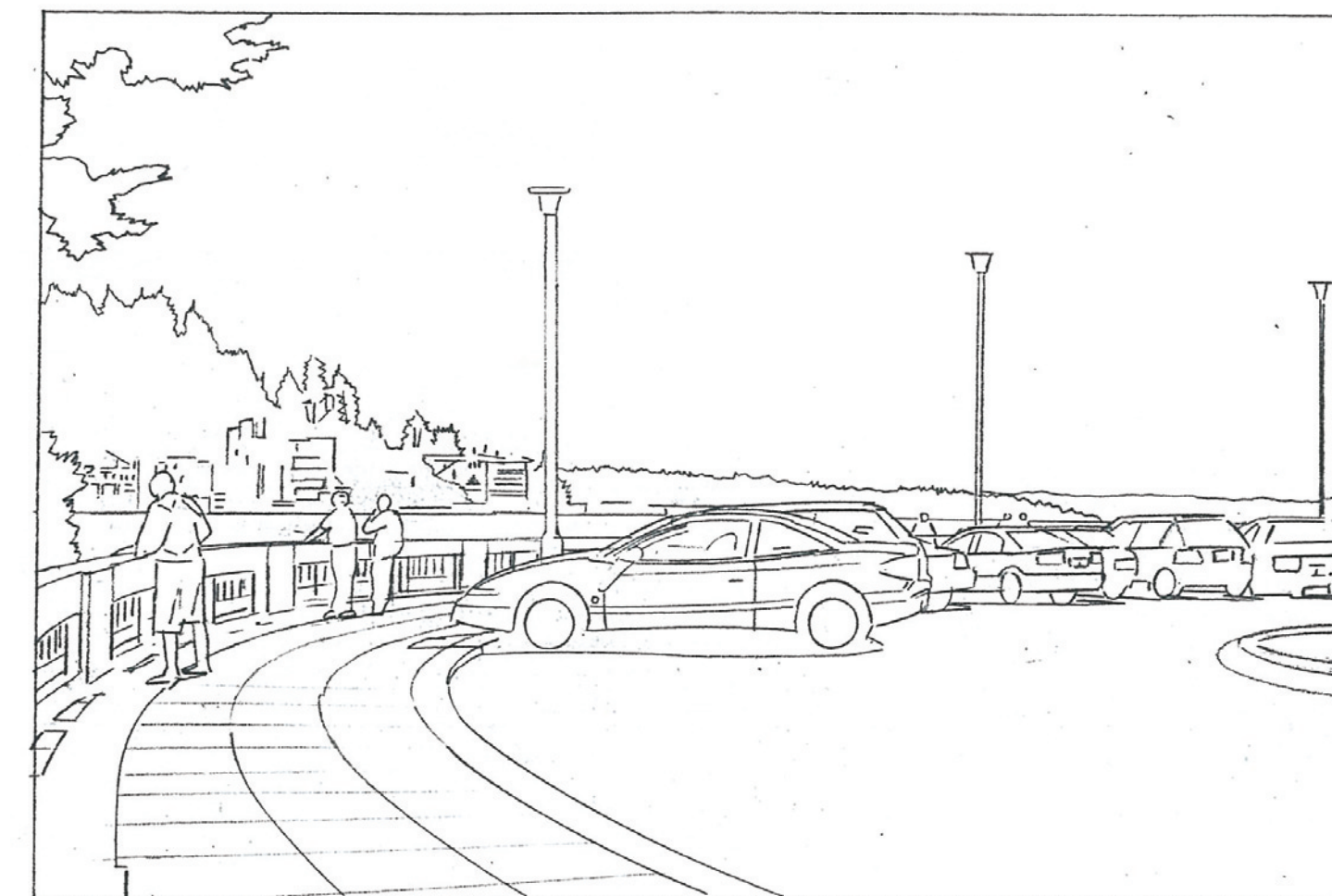
STREAM RESTORATION



PEDESTRIAN ACCESS



PATHS/FOOTBRIDGES

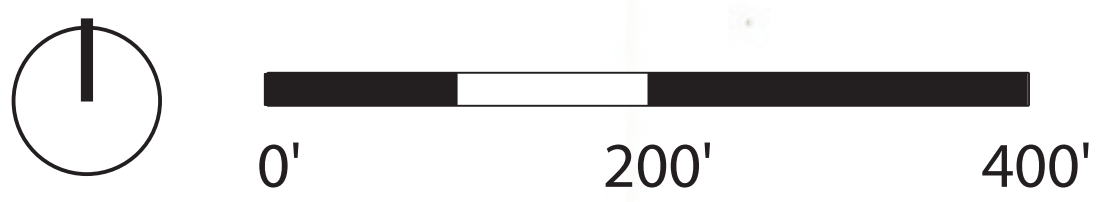
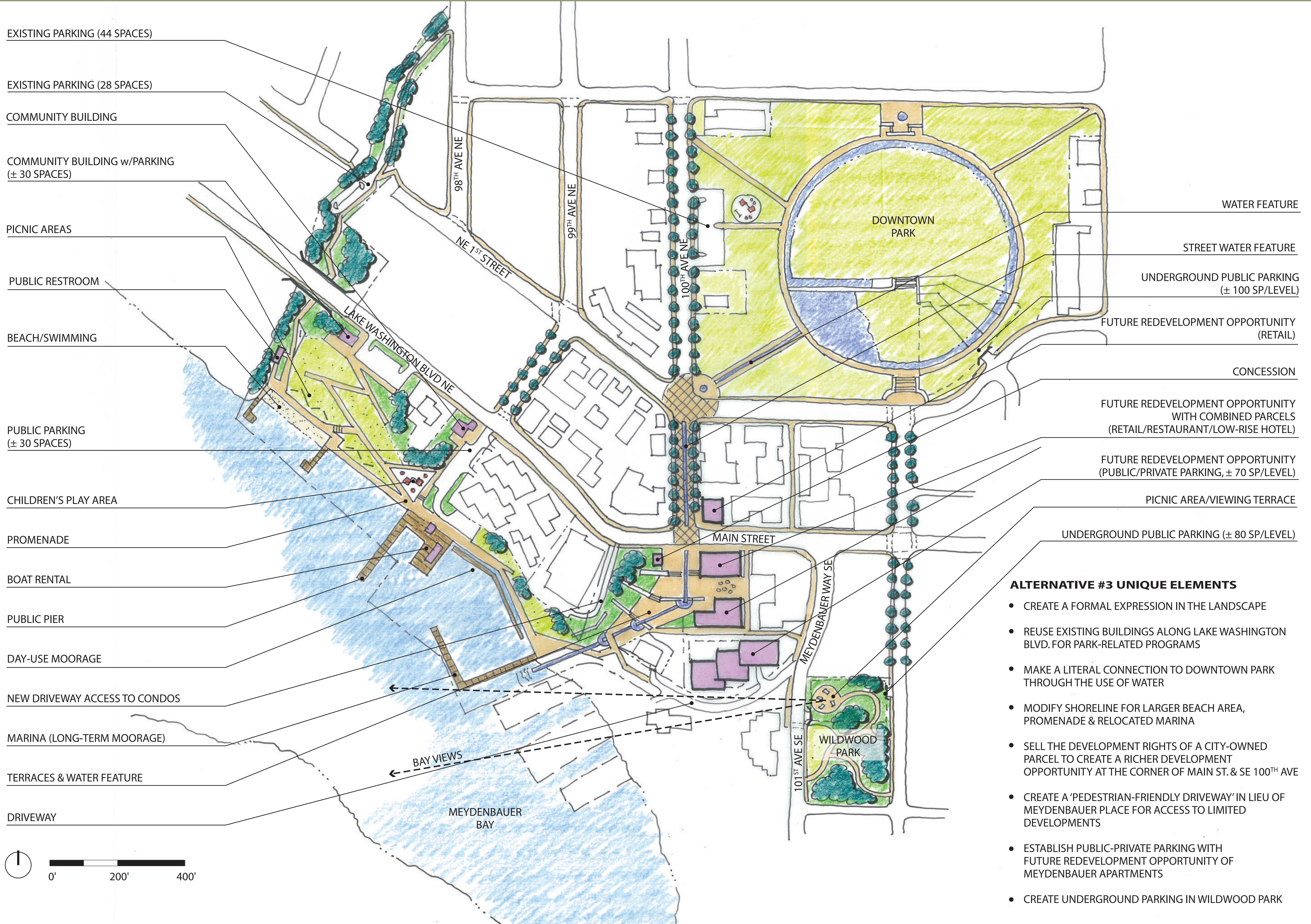


OVERLOOK



HILLSIDE PATHS

ALTERNATIVE #3



*The information in this material was compiled, written, and/or prepared by an independent consultant, and does not represent any endorsement, approval, or recommendation by the City of Bellevue.

ALTERNATIVE #3



PROMENADE



PROMENADE



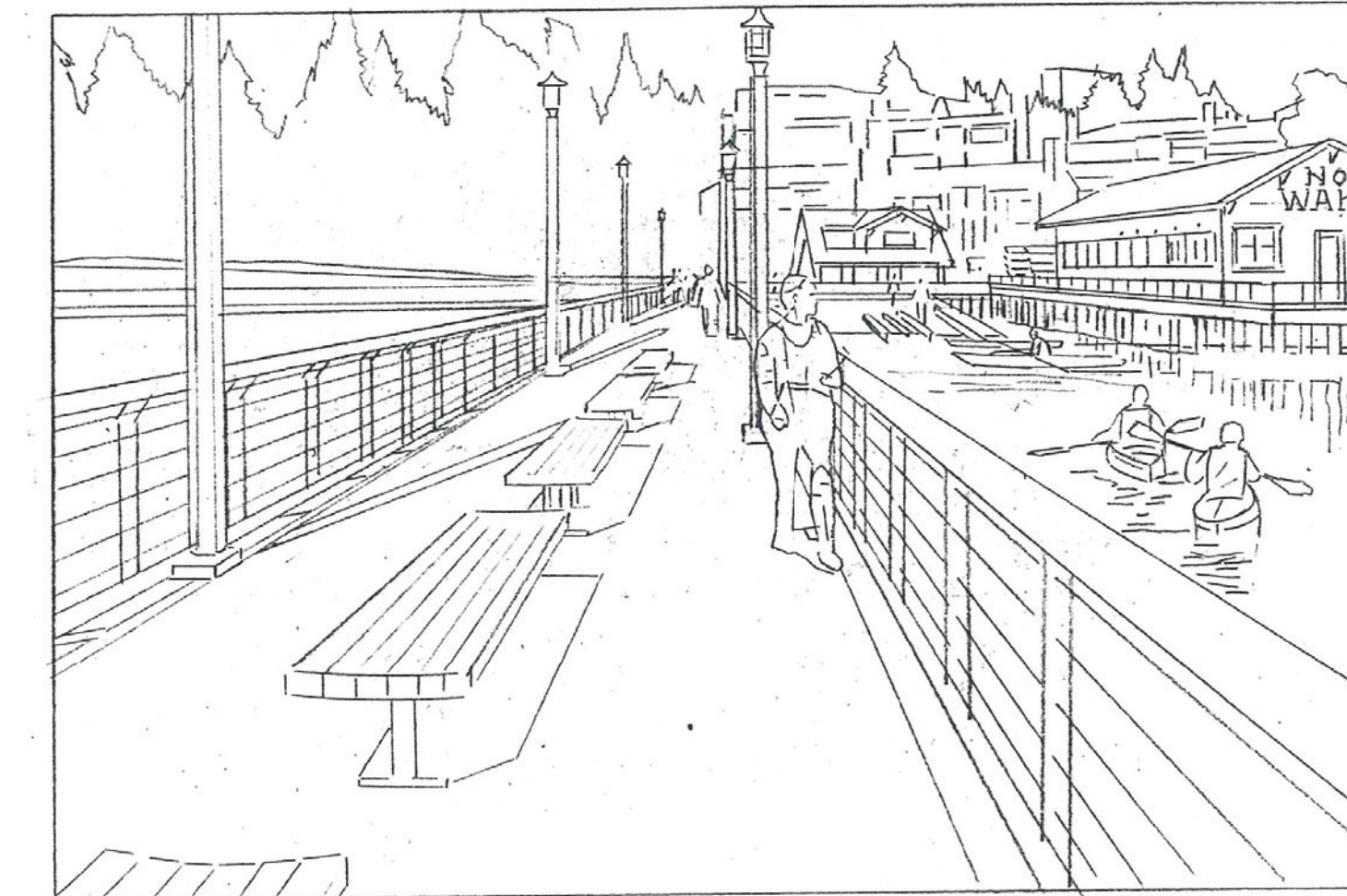
WATER FEATURE



WALKS/PATHS



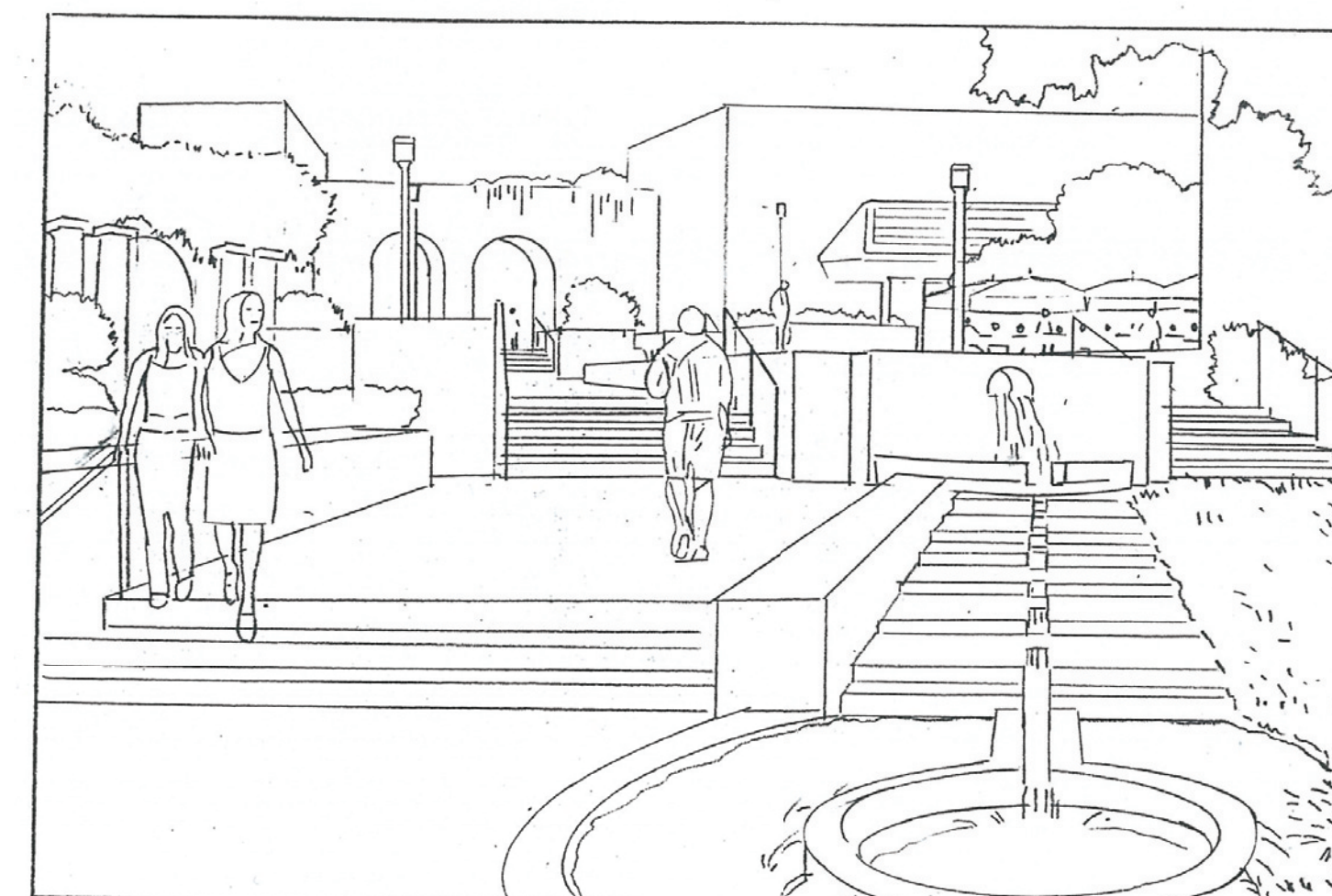
DRIVEWAY



PUBLIC PIER



PLAZA



PLAZA/WATER FEATURE



PLAZAS/TERRACES

*The information in this material was compiled, written, and/or prepared by an independent consultant, and does not represent any endorsement, approval, or recommendation by the City of Bellevue.