

ALTERNATIVE 2

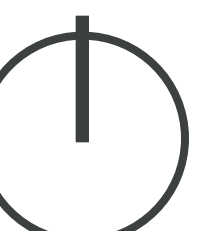
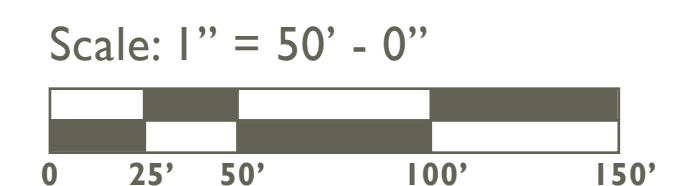
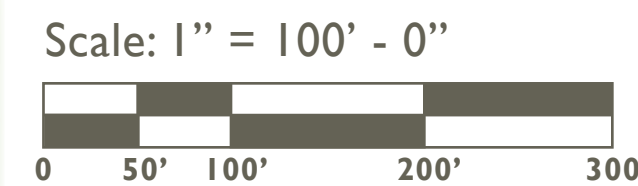
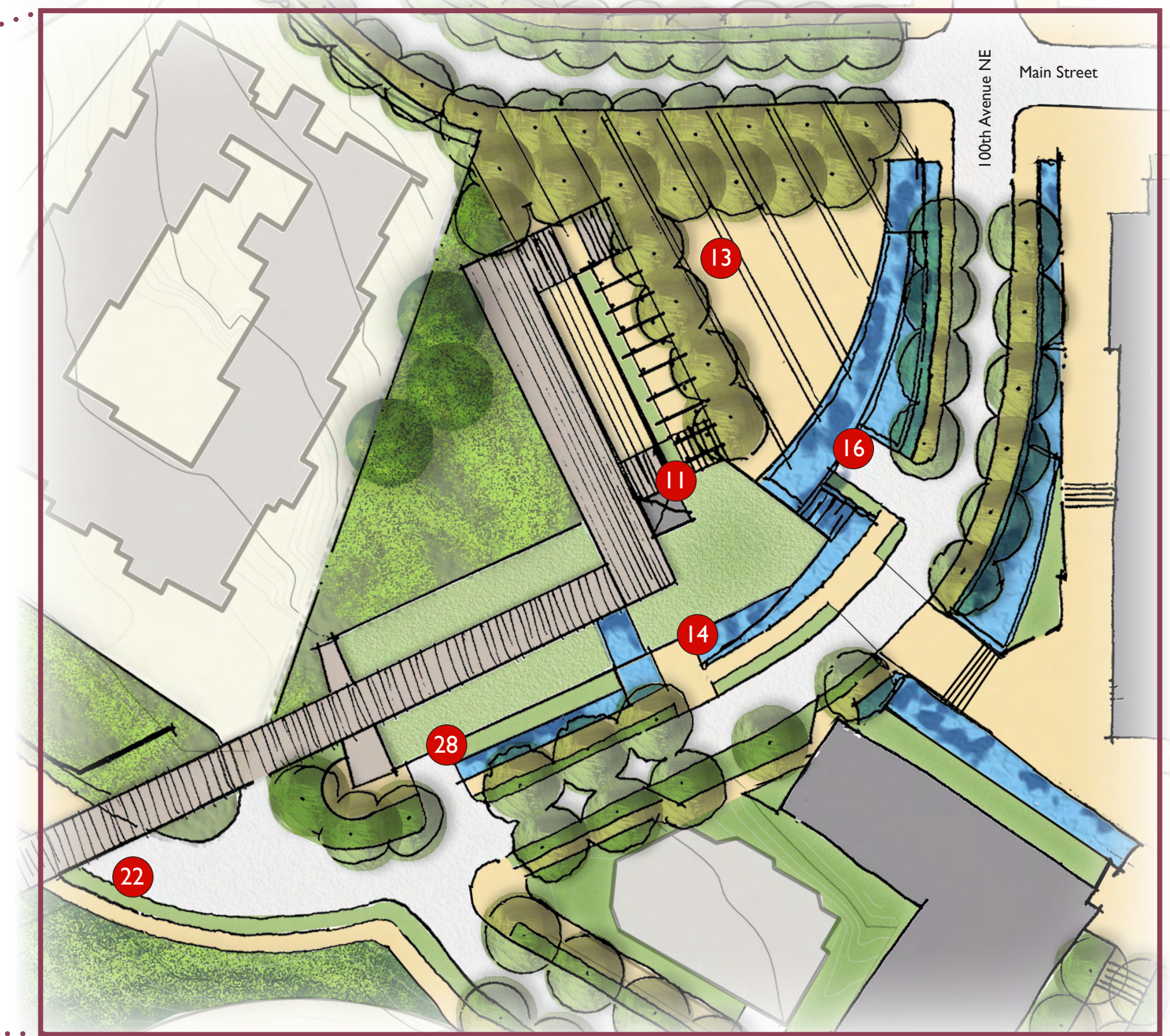


Marina Program	Existing	Alternative 2
Pier Removal	NA	Removes Piers 2 & 3
Permanent Long-term Moorage	87 slips	29 slips
Not in Service/Transient	25 slips	14 slips Pier 1 & public dock
People Propelled Vessels (PPV)	No facilities	Up to 10 PPV slips North side of Pier 1
Boat Storage	No facilities	Limited potential on land

Park Program Elements

- 01 Partially day-lighted stream with adjacent trails improves quality of water entering the Bay and provides important aquatic habitat (retain existing ravine paths, parking)
- 02 Ravine enhancements (Contiguous canopy forested areas to be retained and enhanced; invasive plants removed) provide improved habitat for key species
- 03 Retain existing paths, roads and parking in Ravine
- 04 Retreat Center with parking below (90 spaces) and grand viewing park terrace above
- 05 Custom designed playground (for school-aged children) blends with other park features and enhances the natural character of the park.
- 06 Large lawn terraces provide seating areas with close visual proximity to the beach and playground
- 07 Shoreline boardwalk with pedestrian & emergency vehicle access
- 08 Waterfront viewing plaza with tucked under restroom below
- 09 Short-term marina parking (4-6 spaces) and drop-off area
- 10 Removal of Piers 2 and 3, additional moorage on Pier 1
- 11 Series of elevators provide ADA access to shoreline
- 12 Public dock with transient moorage slips and people propelled vessel launch
- 13 Main Street plaza / Bay view steps with significant public art feature provides memorable entry point into the park
- 14 Café with green roof near Bay view steps activates the park near Main Street
- 15 Small seasonal vendor kiosks
- 16 Tucked under parking garage with 40-50 spaces
- 17 Floating boardwalk and small scale public pier at south end of the park allows for near-shore upland habitat restoration and boardwalk loop with views of the bay and city skyline
- 18 Whaling Building: Historical/Cultural Maritime Center
- 19 Enhanced hillside woodland (Removal of invasive species, preservation of significant trees, and planting of native forbs, shrubs, and trees)
- 20 Swim beach
- 21 Softened shoreline (Improved near-shore habitat and addition of native riparian vegetation, including overhanging plants and woody debris)
- 22 The Lake to Lake Trail system Downtown connection terminus
- 23 Swim lanes and life guard float near beach create safe swimming areas
- 24 Upper viewing terrace with vehicular pull-off (+/-10 short-term parking spaces) provides space for future transit stop
- 25 Continuous waterfront promenade extends the full length of the park shoreline with pedestrian & emergency vehicle access behind the marina.
- 26 Retain existing public pier
- 27 Enhanced streetscape with improved sidewalks, additional street trees and site furnishings for added pedestrian comfort along streets connecting to surrounding parks.
- 28 Tucked under canoe and kayak storage with green roof
- 29 Elevated viewpoint

Road Open Variant



ALTERNATIVE 2



Section Locations

