

# ALTERNATIVE I

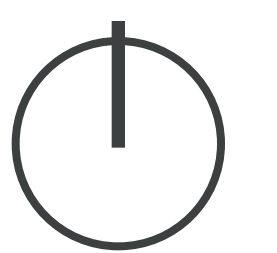
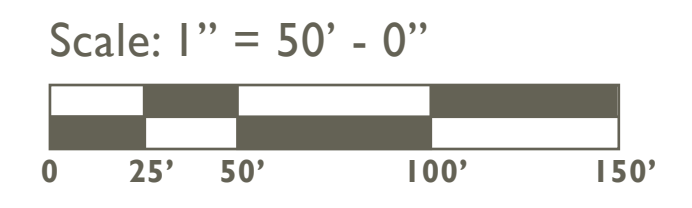
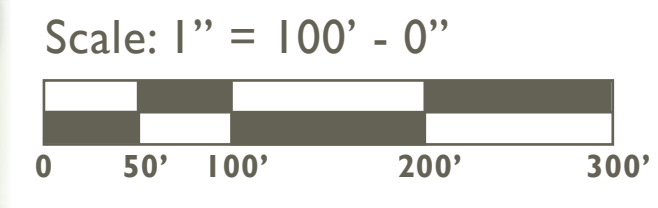
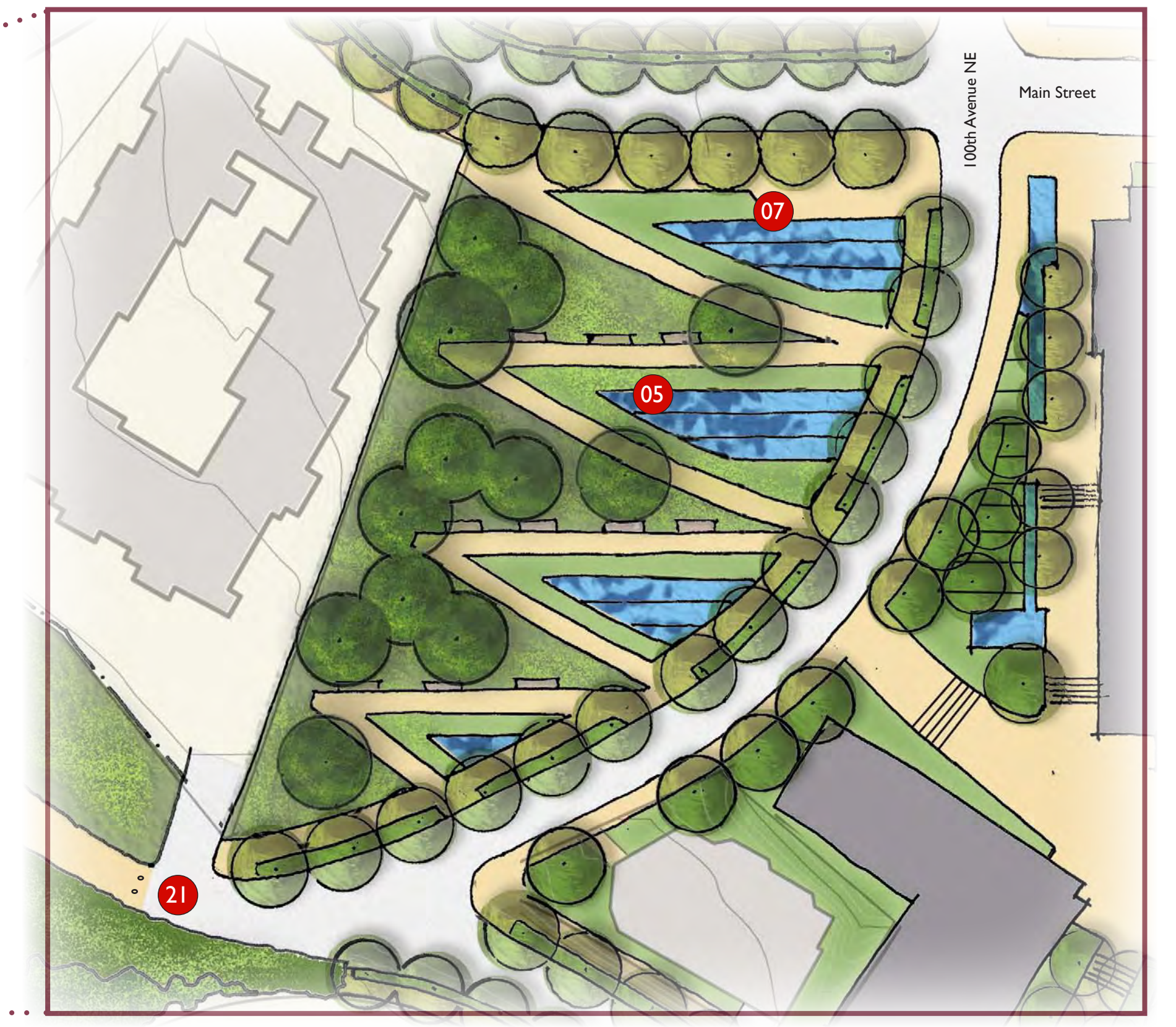


Marina Program	Existing	Alternative I
Pier Removal	NA	Removes Pier 3
Permanent Long-term Moorage	87 slips	43 slips
Not in Service/Transient	25 slips	14 slips South side of public dock and on Pier 1
People Propelled Vessels (PPV)	No facilities	Up to 15 PPV slips North side of public dock and at beach
Boat Storage	No facilities	Limited potential on land

## Park Program Elements

- 01 Fully day-lighted stream with interpretive/education nodes along adjacent pedestrian path provides important pedestrian experience.
- 02 Ravine enhancements (Contiguous canopy forested areas to be retained and enhanced; invasive plants removed) provide improved habitat for key species.
- 03 Shade/rain structure provides cover for pedestrians at mid-level terrace
- 04 Relocated Wetland (Incorporation of wetlands with the stream/shoreline delta to form a contiguous surface water structure) provides improved aquatic habitat
- 05 Significant stormwater feature extending from Downtown Park along 100th Ave. NE through the park terraces provides a visual connection between the two parks.
- 06 Upper viewing terrace with vehicular pull-off (+/-10 short-term parking spaces) provides space for future transit stop. Retreat center tucked under provides additional space for community activities.
- 07 Grand viewing plaza at 100th AVE NE and mid-slope terraces with ADA path to the shoreline allows pedestrians to enjoy multiple views of the bay.
- 08 Custom designed playground (for school-aged children) blends with other park features and enhances the natural character of the park.
- 09 Grass picnic area with shade structure provides close visual proximity to the beach and playground.
- 10 Youth Environmental Education Center: restrooms, gathering space, outdoor education green, and terraced garden
- 11 Continuous waterfront promenade extends the full length of the park shoreline with pedestrian & emergency vehicle access behind the marina.
- 12 Restrooms (with green roof)
- 13 Short-term marina parking (4-6 spaces) and drop-off area
- 14 Removal of Pier 3
- 15 Public dock with viewing platform and transient moorage
- 16 Parking garage tucked into hillside (90 spaces) and grand viewing park terrace above
- 17 Whaling Building: Historical/Cultural Maritime Center
- 18 Enhanced hillside woodland (Removal of invasive species, preservation of significant trees, and planting of native forbs, shrubs and trees)
- 19 Swim beach with people propelled vessel launch
- 20 Softened shoreline (Improved near-shore habitat and addition of native riparian vegetation, including overhanging plants and woody debris)
- 21 The Lake to Lake Trail system Downtown connection terminus
- 22 Enhanced streetscape with improved sidewalks, additional street trees and site furnishings for added pedestrian comfort along streets connecting to surrounding parks.

## Road Open Variant



# ALTERNATIVE I



Section Locations

