

Neighborhood Park Development

Bridle Trails

Bridle Trails Community Club Meeting
NE 24th St. Park Plan Update
Sept. 20, 2012



Agenda

Master Plan Elements

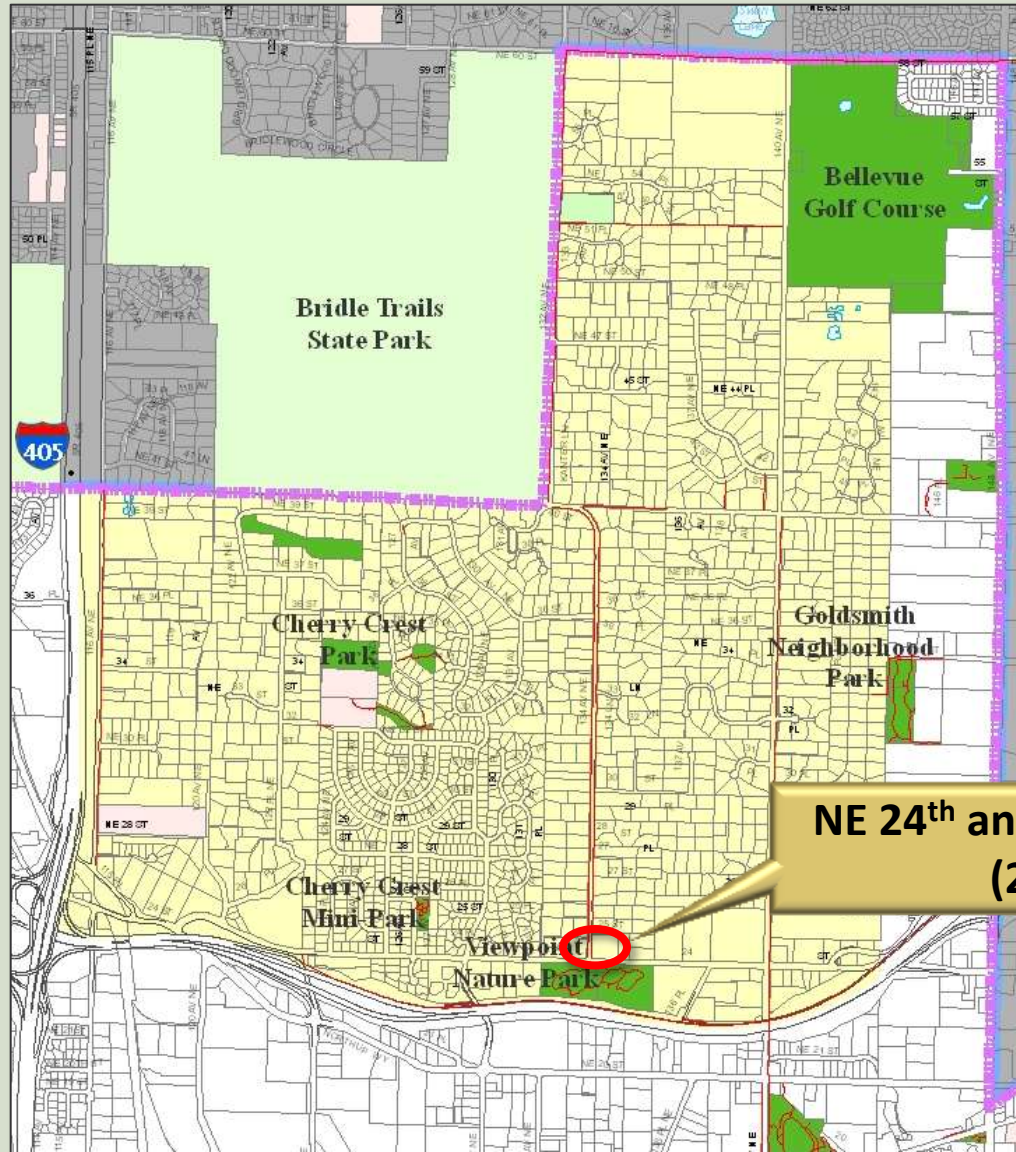
Parking Options

Next Steps

Q & A



Bridle Trails Neighborhood



**NE 24th and 134th Ave NE
(2402)**



TOPOGRAPHIC SURVEY-2402 134th Ave. NE

Park Use and Elements Incorporated into Park Plan

- Bridle Trail Gateway Opportunity
- Trails
- Play area/elements for Children
- Lawn area for activities
- Picnic Table/benches
- Open Space Meadow
- Frontage Landscape Improvements
- Flowering Trees/native plantings
- Wetland/Tree Protection-Wildlife Habitat Enhancements
- Attractive Landscaping
- Privacy and Plant Buffering for Park neighbors
- Maintain Visibility into Park from NE 24th & NE 25th St.
- Parking options

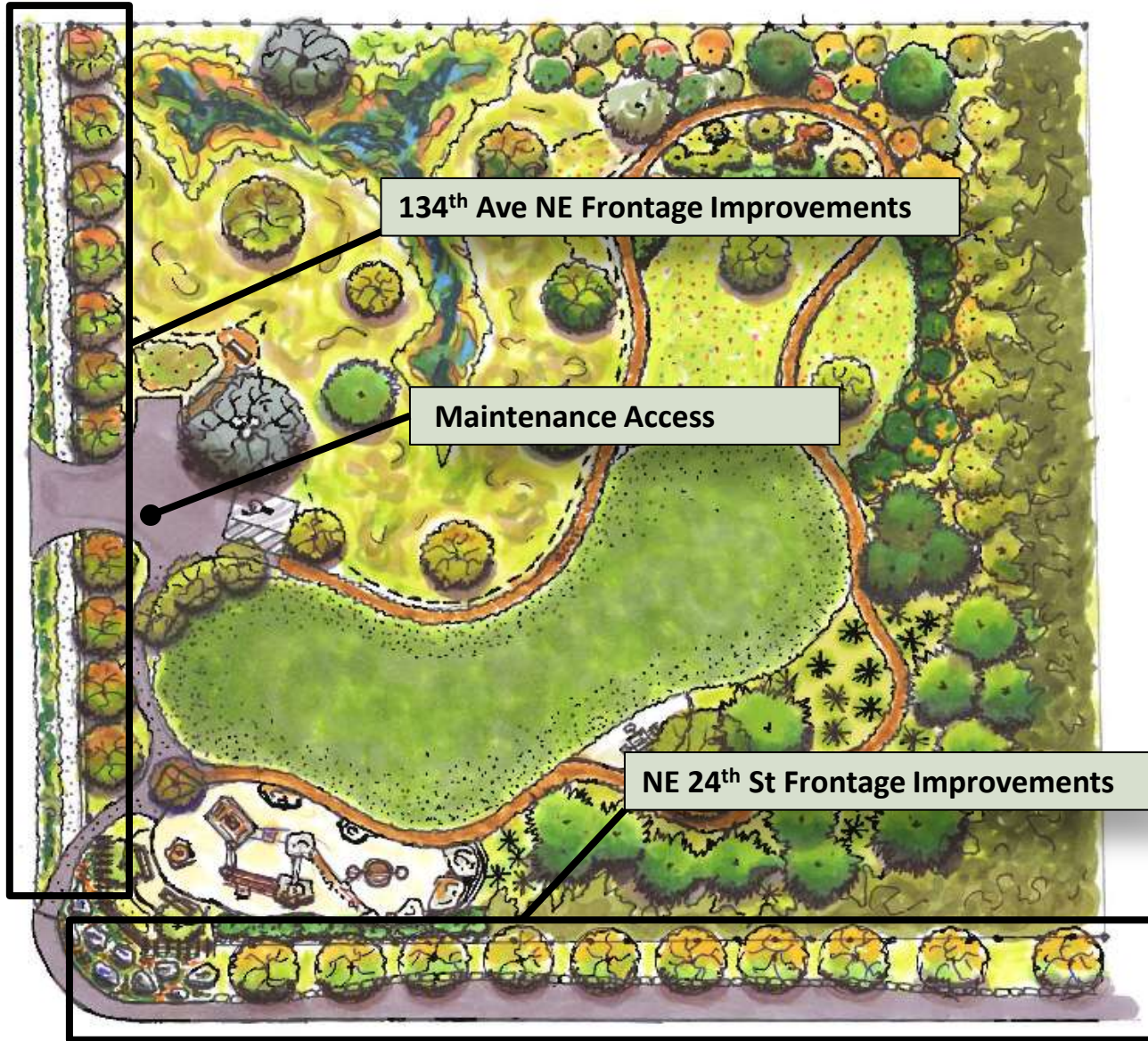


NE 24th St. Park Plan

NE 25th St



134th Ave NE



134th Ave NE Frontage Improvements

Maintenance Access

NE 24th St Frontage Improvements

Frontage Improvements

NE 24th St

Frontage Improvements NE 24th St.



Frontage looking East along NE 24th



Flowering Dogwoods-City Hall

- Remove and replace existing fence along NE 24th
- Remove invasive species/re-plant using low water use varieties
- Plant flowering trees and landscaping along frontage slope

Frontage Improvements 134th Ave NE



Park Frontage looking North along 134th



134th Ave NE/ NE 30th
"Rain Garden"

Flowering Crabapples
Newport Hills Park



Frontage Improvements 134th Ave NE



Site Access off of 134th NE



Meadow Wood Park Entry

- **Drainage/Stormwater Improvements (utility requirements)**
- **Pedestrian access improvements at 24th/134th intersection, pathway/parking improvements, street frontage improvements (Transportation requirements)**
- **Preserve existing crushed path surfacing if possible**
- **Plant flowering trees and landscaping along street frontage**
- **Maintenance Access off of 134th, potential option for parking (2-3 spaces)**

NE 25th St



Wetland (Class IV)

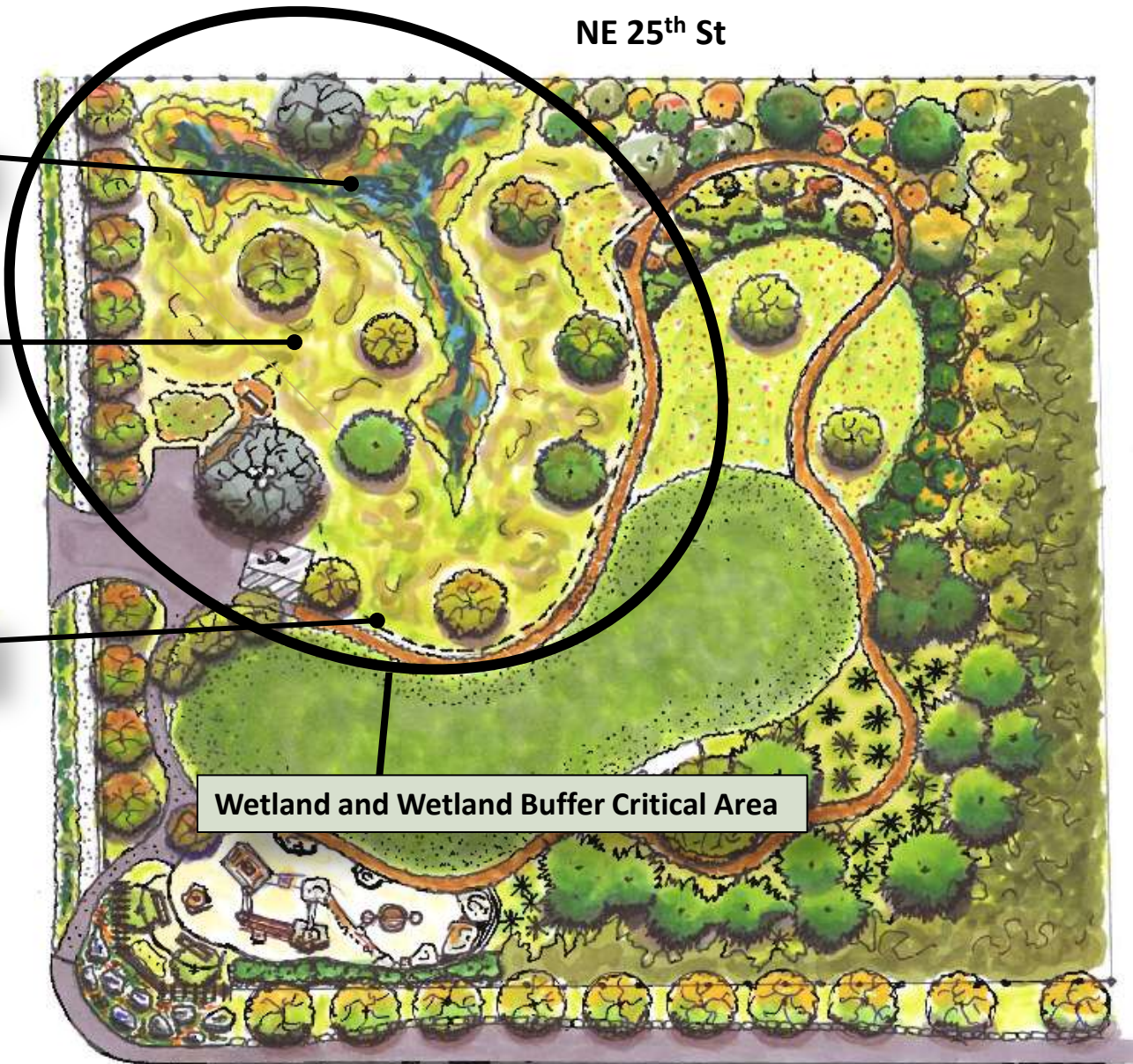
Wetland Buffer

Wetland Buffer Edge

134th Ave NE

Wetland and Wetland Buffer Critical Area

Wetland and Wetland Buffer Enhancements



Wetland and Wetland Buffer Enhancements



Wetland and Buffer Area



Ravine Garden Native Garden
@ Bellevue Botanical Garden

- Remove invasive species
- Bench w/ view of wetland
- Enhance wildlife habitat
- Interpretive opportunity

NE 25th St



Open Lawn Space w/ Loop Trail

134th Ave NE



Loop Trail and Open Lawn Space

Loop Trail and Open Lawn Space



Rough Mow Area -looking East

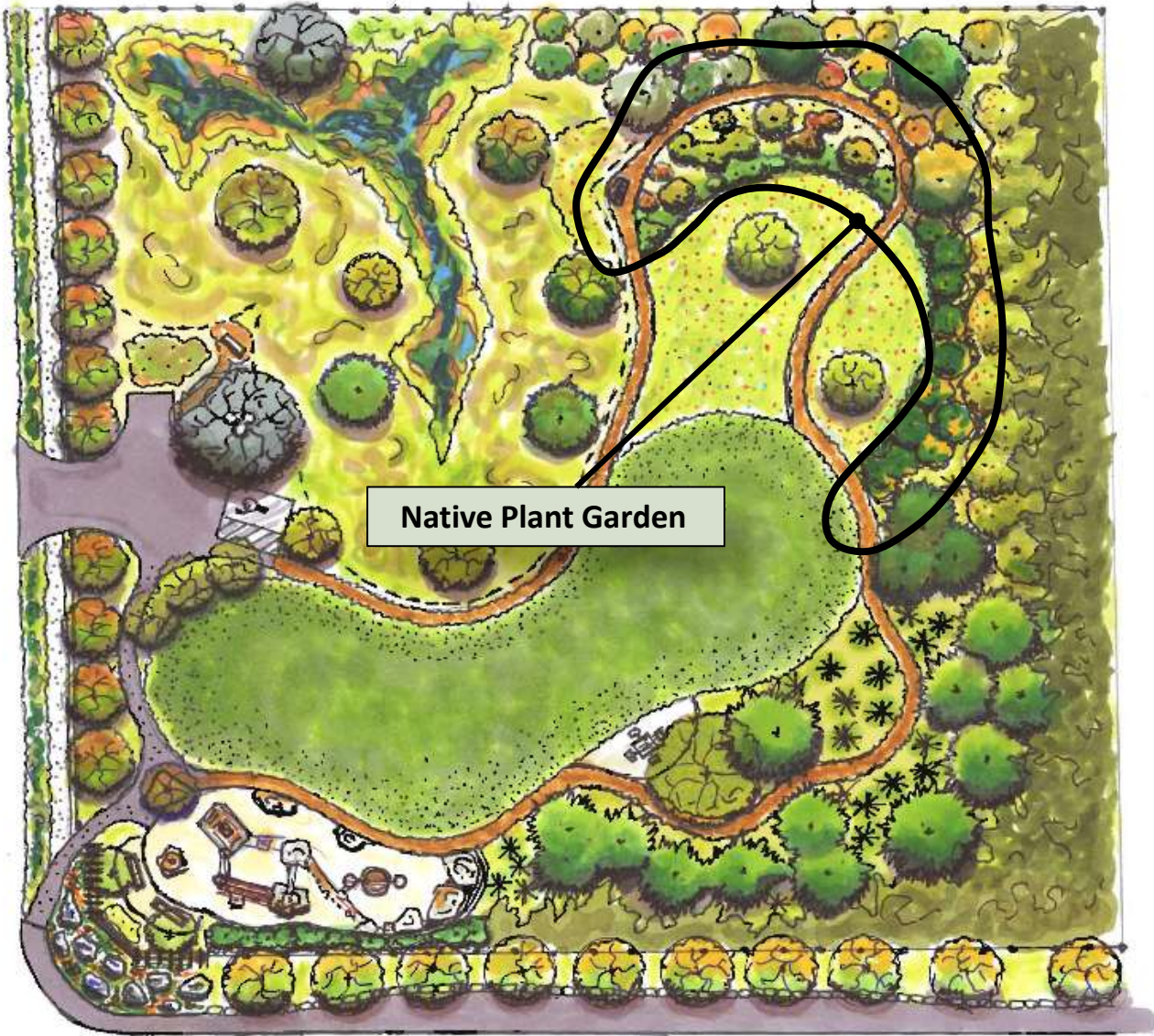


Loop Trail-Gass Area
Tam O' Shanter Park

- Open Lawn area for both active and passive uses
- Lawn maintained year around
- Loop trails w/ surfacing (surfacing TBD), transitions through a variety of environments (wetland, native, meadow, forest)

NE 25th St

134th Ave NE



Native Plant Garden



Trees, Shrubs & Native Landscaping

Trees, Shrubs & Native Landscaping



- Predominantly 'low water use' and native plantings
- Wildlife habitat enhancement opportunities
- Irrigation recommended first 2-3 years until plants are established

NE 25th St

134th Ave NE



Low Grass Meadow

Low Grass Wild Meadow Area

Low Grass Wild Meadow Area

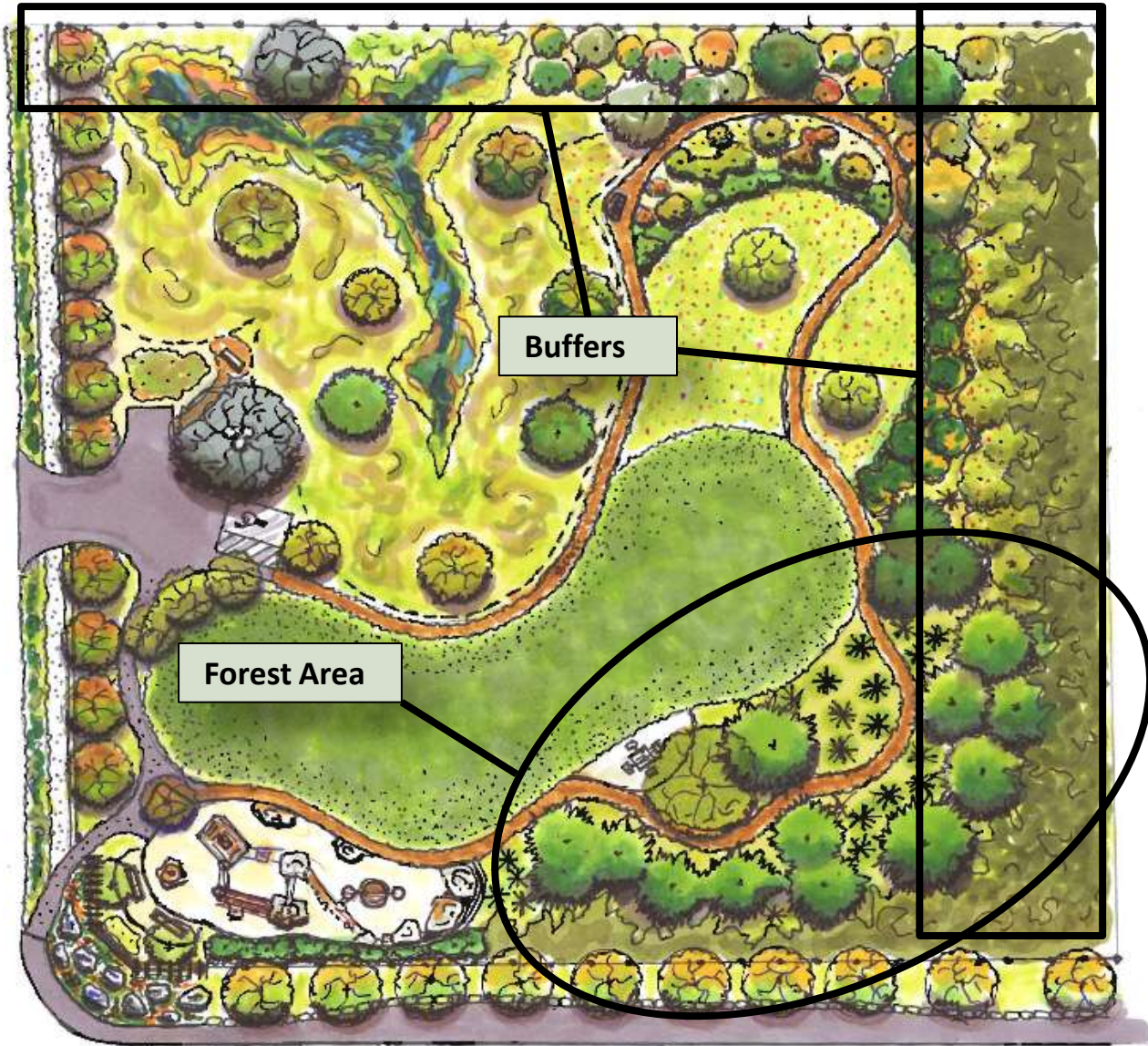


- **Meadow Grass (low grow variety 12-18" Ht.)**
- **Incorporate NW Wildflower Seed Mix**
- **Minimal Maintenance**
- **Trail access**
- **Enhance Wildlife Habitat**

NE 25th St



134th Ave NE



Park Edge Buffers & Forested Area Enhancements

Park Edge Buffers & Forested-Slope Area Enhancements



Forest Edge - Invasive Vegetation



Mixed Buffer - City Hall

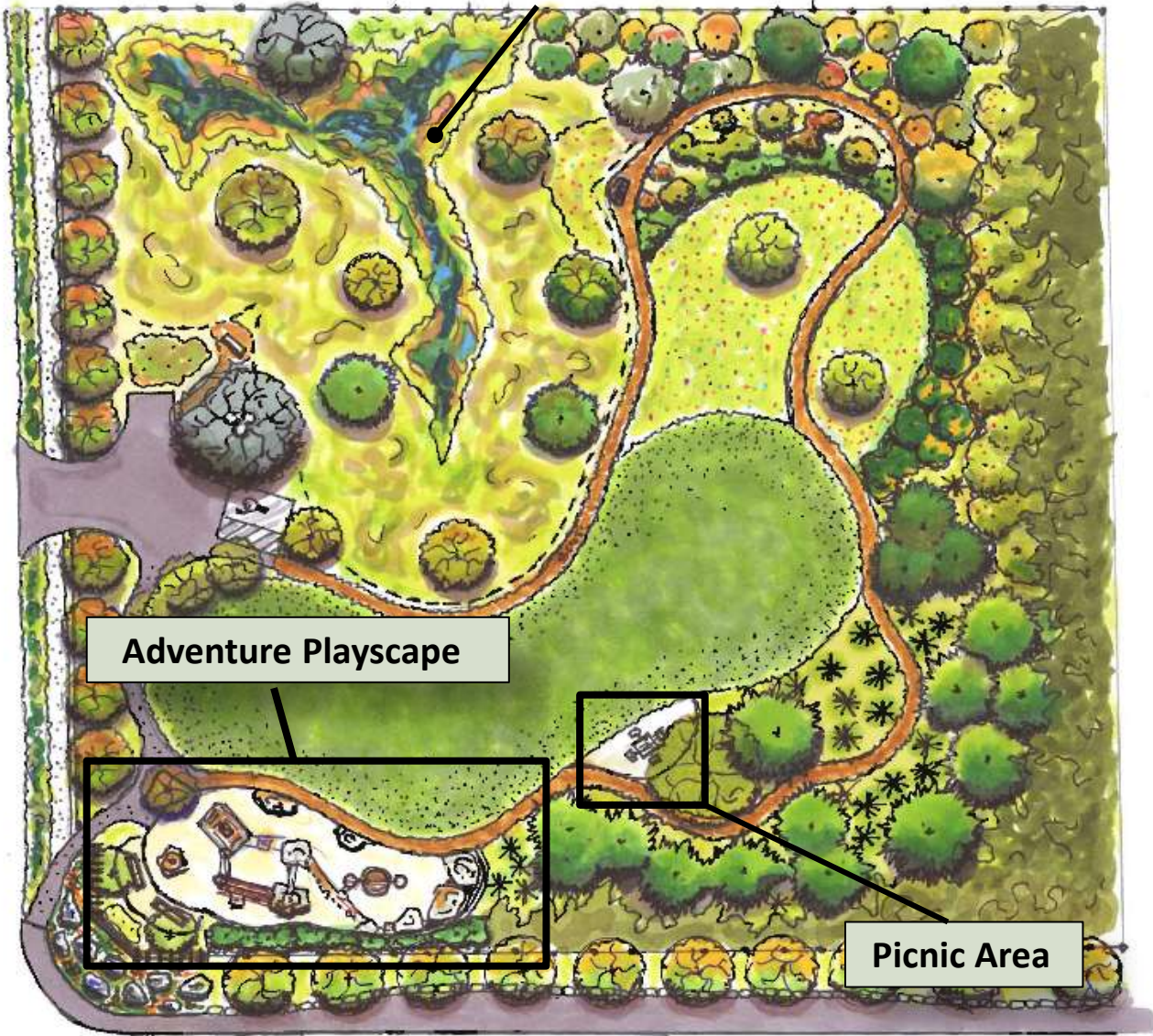


Fern understory

- **Preserve significant conifers**
- **Remove invasive plant species**
- **Plant added conifers in forest area**
- **Enhance & restore understory**
- **Work with neighbors to provide park buffers**

134th Ave NE

NE 25th St



Adventure Playscape

Picnic Area

Adventure Playscape & Picnic Area

Adventure Playscape

What is an Adventure Playscape?

They are play environments that blend both natural and man-made materials, features, and vegetation with creative landforms to create purposely complex play spaces with high levels of play value.

Natural playscapes will provide children with all the same benefits as typical playgrounds: gross motor activity, risk taking, problem solving, social interaction, etc. but also teach children about the wonders and intricacies of the natural environment and inspire them to use their imaginations in a way that differs from traditional playgrounds.

Adventure Playscape



- Apprx. 2,500-3,000 sqft
- Perimeter site fencing
- Benches incorporated
- Maintain visibility into park from 134th St.

Park Amenities



Benches



Picnic Table

- **Trash Receptacles**
- **Interpretive Element**
- **Benches**
- **Picnic Table**
- **Bike Rack**



Interpretive Element

NE 25th St

NE 25th St

134th Ave NE



Gateway

**Bridle Trails Gateway & Connection
with Viewpoint Park**

Bridle Trails Gateway and Connection w/ Viewpoint Park



Corner of NE 24th/134th NE



BT Gateway landmark opportunity

- Create and strengthen visual connection between parks
- Enhance SW corner of park property w/ landscaping
- Opportunity for a gateway landmark
- Work w/ BT community on design, budget etc.



**View Point Park Trailhead
No current formalized parking**

- **Formalized parking to service both sites 4 spaces (1 ADA)**
- **Enhancements to trailhead**
- **Strengthen connection of parks**
- **Increased visibility into Viewpoint Park site**
- **Crosswalk Improvements**

Viewpoint Park Trailhead Improvements & Parking Options



**Viewpoint Park Trailhead
& Parking Improvements**

NE 25th St

NE 25th St

134th Ave NE

Parking
Option B



Parking Alternative

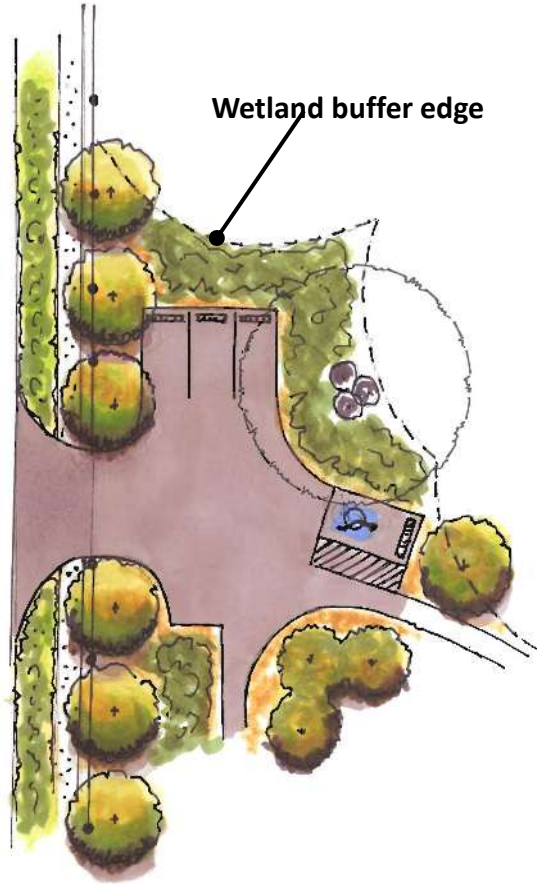


Current 134th St. Maintenance Access

- **Formalized parking 3-4 spaces (1 ADA)**
- **Maintain visibility into Park site**
- **Construction outside of wetland buffer**

134th St. Access Parking Option

134th Ave NE



Park

Parking Option B

Next Steps:

- Present recommended park plan to Parks Board on Oct. 9



Opportunities for Feedback & Contact Information

Bellevue Parks & Community Services

Attn. Scott Vander Hyden

450 110th Ave. NE Bellevue Wa 98004

425.452.4169

Svanderhyden@bellevuewa.gov

Project Website

http://bellevuewa.gov/bridle_trails_levy.htm

