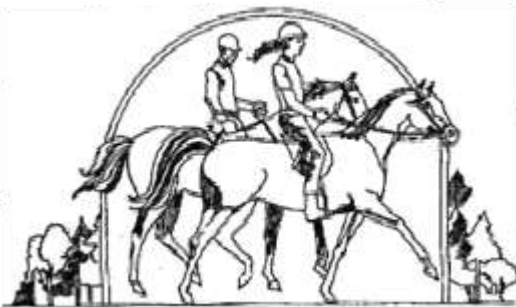


# Neighborhood Park Development **Bridle Trails**

**NE 24<sup>th</sup> St. Park Master Plan Meeting #3**  
**June 14, 2012**



# Agenda

**Project Overview**

**Community Response, Comments and Survey Results**

**NE 24<sup>th</sup> St Site Existing Conditions**

**Opportunities & Constraints of the Site**

**Master Plan Elements**

**Contact Info, Next Steps & Park Naming**

**Questions, Answers ,Comments and Idea Sharing**



# Parks & Natural Areas Levy

## Neighborhood Park Development (\$5M) (\$2.5M for Bridle Trails Area)

Smaller-scale parks will be developed with amenities such as play equipment, open space, and trail connections. Proposed sites are along Lake Sammamish and in the Bridle Trail neighborhoods.





# Planning Process Milestones

- **May 2009 thru 2010-** BTCC & Public Outreach/Input & Project Research, Feasibility & Evaluation
- **October 12, 2010-** Parks/BTCC endorses and recommends to Council
- **September 30, 2010-** BTCC Ratifies recommendations
- **November 22, 2010** - Council authorizes property negotiation for recommended NE 24<sup>th</sup> St. property acquisition.
- **January 31, 2011** –New park property acquisition
- **Feb. 2012** –24<sup>th</sup> St. Park Master Plan process begins
- **March 29, 2012-** Kick-off 24<sup>th</sup> St. Master Plan Community Meeting
- **May 10, 2012-** 2<sup>nd</sup> Master Plan Community Meeting
- **June 14, 2012-** 3<sup>rd</sup> Master Plan Community Meeting

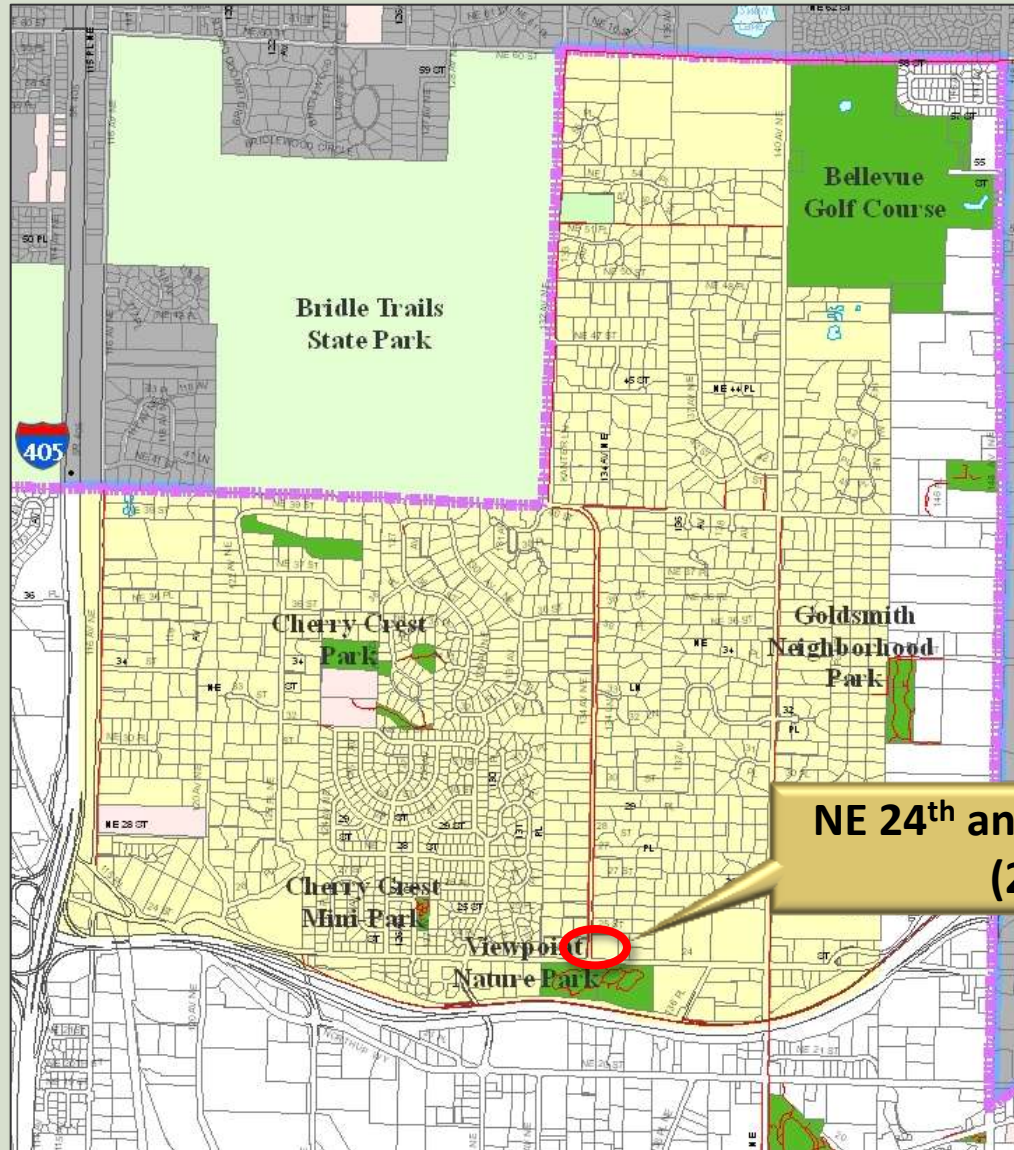
# BTCC Recommendations

**Committing at least \$2.5 million voter approved Parks & Natural Areas Levy funds towards Neighborhood Park Development and Natural Areas in the Bridle Trails Neighborhood. The Preferred Neighborhood Park and Natural Area Development Projects, to the extent projects and development are feasible and can be Levy funded, are identified in preferred order:**

1. Obtain an agreement with the State of Washington to develop, operate and maintain the property at 5220 132<sup>nd</sup> Ave NE (aka Acheson property) as a public park- **Negotiations in progress**
2. Pursue acquisition of the property located at NE 24<sup>th</sup> and 134<sup>th</sup> Ave NE for the purposes of providing Park and Open Space- **Purchase Complete**
3. Proceed to develop a Master Plan, with the Bridle Trails Neighborhood and with owners of contiguous property, for a neighborhood public park at 5220 132<sup>nd</sup> Ave NE
4. **Proceed to develop a Master Plan, with the Bridle Trails Neighborhood and with owners of contiguous property for a neighborhood public park at NE 24<sup>th</sup> and 134<sup>th</sup> Ave NE**
5. Develop a neighborhood public park at 5220 132<sup>nd</sup> Ave NE
6. Develop a neighborhood public park at NE 24<sup>th</sup> and 134<sup>th</sup> Ave NE



# Bridle Trails Neighborhood



**NE 24<sup>th</sup> and 134<sup>th</sup> Ave NE  
(2402)**





**TOPOGRAPHIC SURVEY-2402 134<sup>th</sup> Ave. NE**



# OPPORTUNITIES & CONSTRAINTS

- **Wetland (Class IV)- Wildlife Habitat, no development**
- **Wetland Buffer 40' - Minimal or no development allowed in the buffer area (mitigation may be required), enhancement & interpretive opportunities**
- **Forested Area- Protect existing significant trees, wildlife habitat**
- **Slopes (some steep slopes over 40%)**
- **No current parking**
- **Connection to Viewpoint Park (pearls on a string)**
- **Approx. one acre of fairly level open and developable area**
- **Easily accessible**
- **BT Gateway location NE 24th/134<sup>th</sup> NE, high visibility**
- **No sewer or storm water infrastructure**
- **Water and power on site or at street**



# **Community response 3/29 Public Meeting**

## **28 residents attended 3/29 community meeting**

- 4ea Comment Cards received at 3/29 meeting
- 12ea direct email comments 3/29-5/10
- 66ea responses to website survey (questions 2-4)
- 34ea written responses (question 1) to website survey

# City of Bellevue Parks On-line Survey 4/2-5/3

**#1- Please provide any suggestions, ideas, or comments regarding the programming or design elements for this new park.**

*Response: 34 comments*

**#2- Many Park uses and elements have been suggested for new park development in the Bridle Trails Neighborhood. Please rank the importance of the following park uses or elements, from very important to least important, that they be included at the new park to be located at NE 24th St/134th Ave NE?**

*Responses: 66 (see next slide)*

**#3- Are you a Bridle Trails Resident? Response: 66 yes 1 no**

**#4- Are you a Bellevue Resident? Response: 60 yes 7 no**

# Neighborhood Park Element Suggestions from Question #2 website survey (66 responses)

## Most Important

1. Tree & Shrubs	57%
2. Open Space	45%
3. Play Area	37%
4. Parking	36%
5. Trails	34%

## Averages Highest (Scale 0-5)

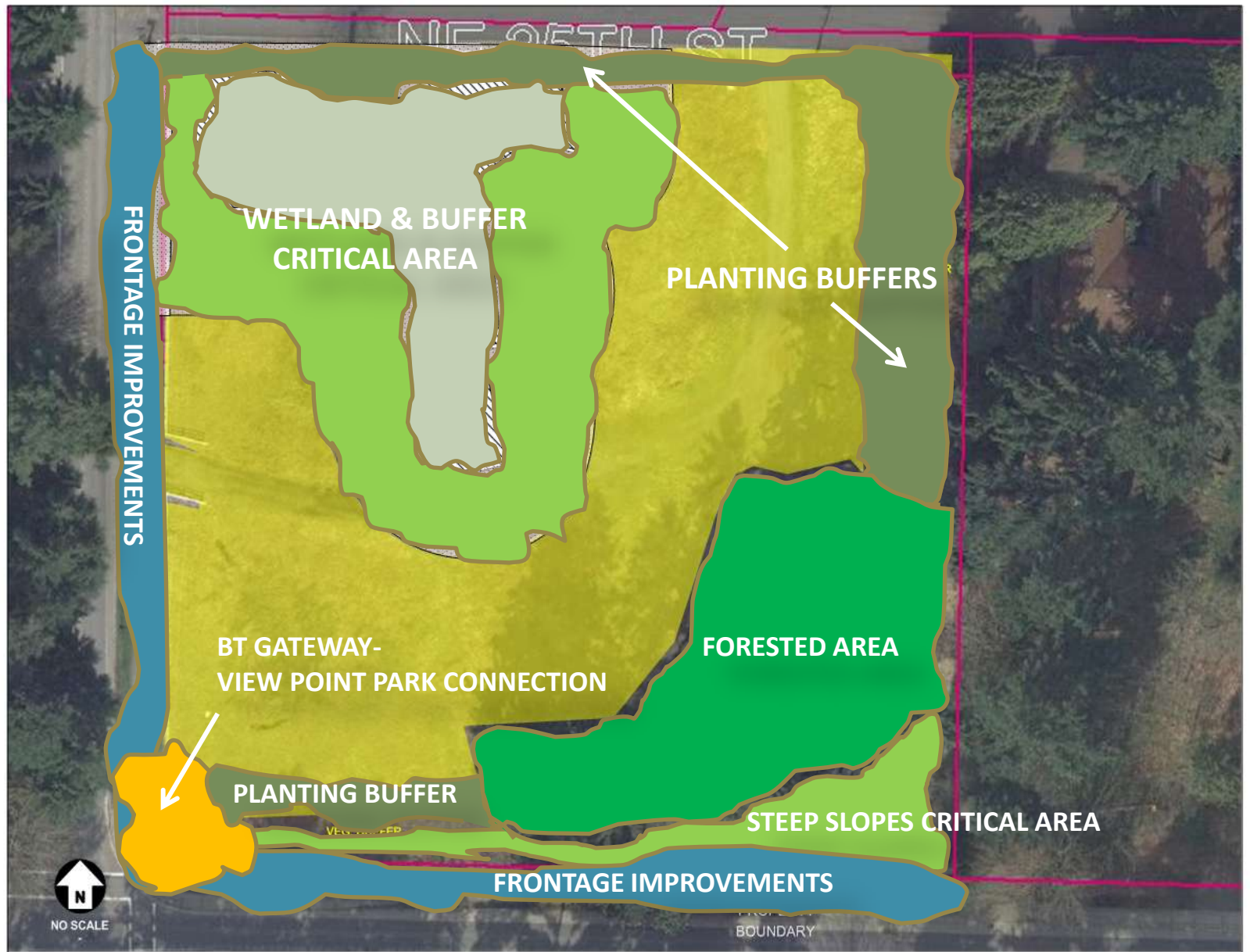
1. Trees and Shrubs	4.0
2. Open Space	3.83
3. Trails	3.15
4. Play Area	3.15
5. Picnic Table	3.15

## Least Important

1. Hist/Cultr Pavillion	64%
2. Athletic Courts	44%
3. Off-Leach Dog	38%
4. Restrooms	35%
5. Lights	30%

## Averages Lowest (Scale 0-5)

1. Hist/Cultr Pavillion	.77
2. Athletic Courts	1.92
3. Restrooms	1.98
4. Lights	2.27
5. Off-Leach Dog	2.29





## MASTER PLAN FOCUS AREAS OBJECTIVES

### Bridle Trails Gateway

- Enhancement of NE 24<sup>th</sup>/134<sup>th</sup> intersection
- Connection with Viewpoint Park
- Park Frontage Improvements

### Critical Area Preservation

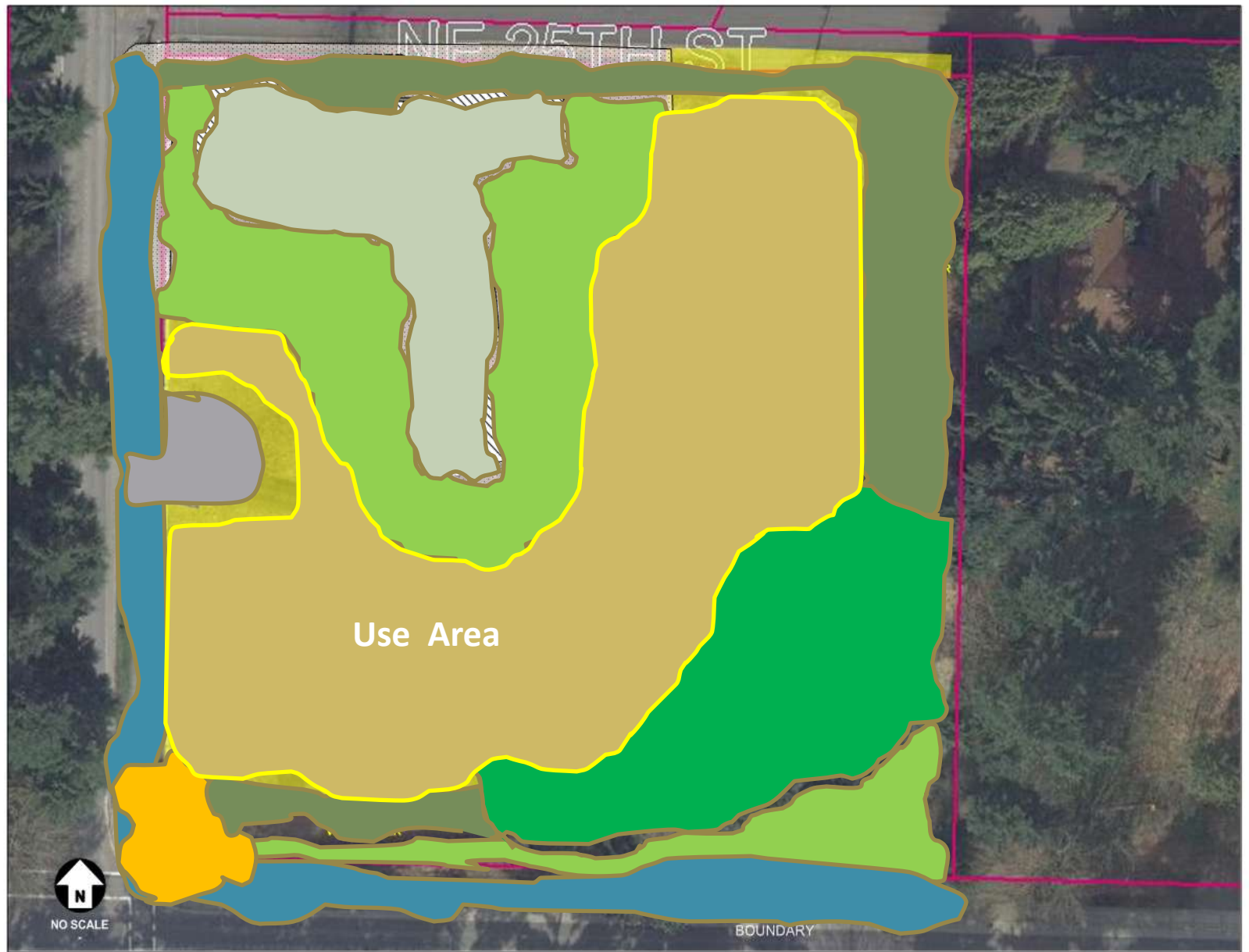
- Remove invasive species
- Enhance wildlife habitat
- Interpretive opportunities

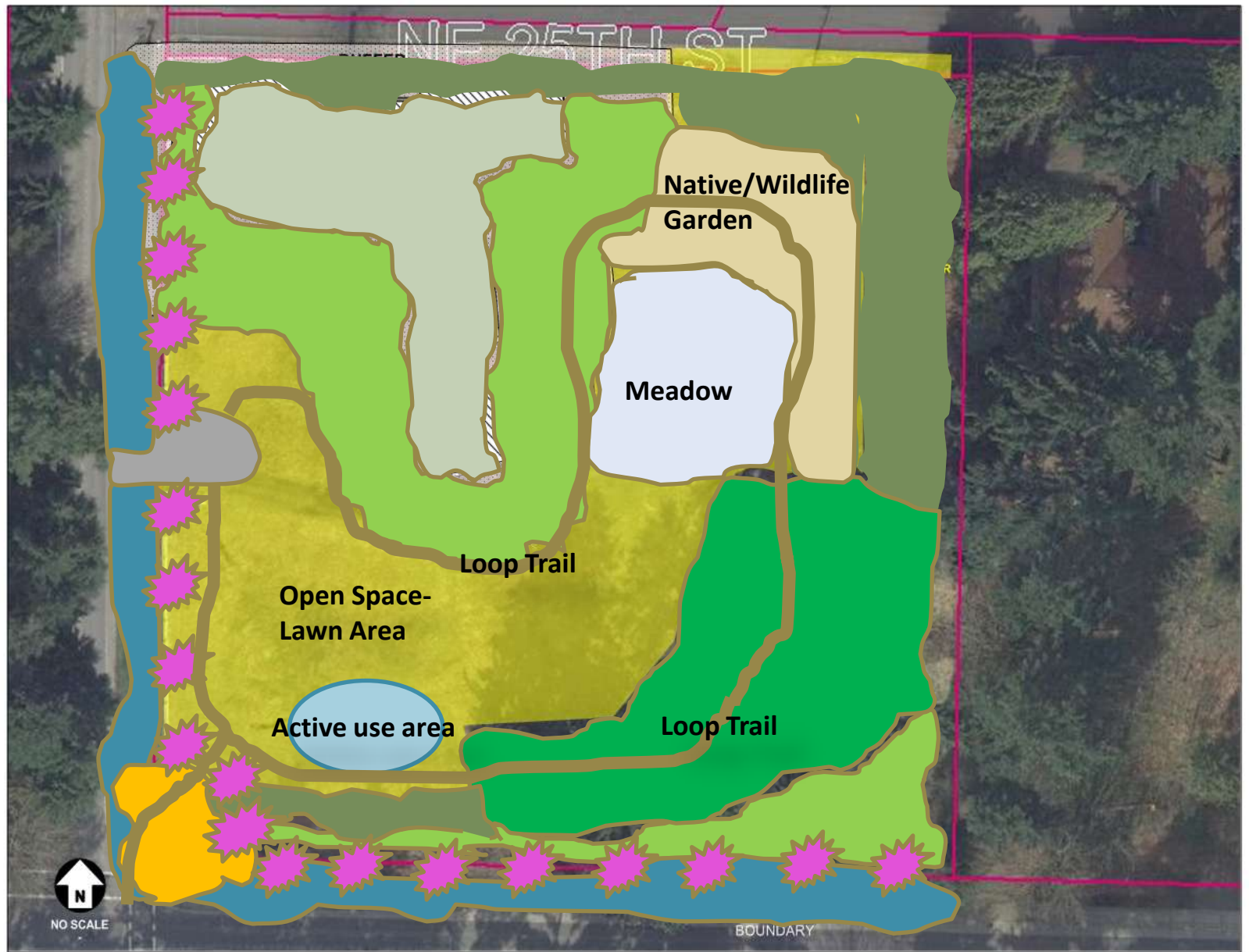
### Forested Area Enhancement

- Remove invasive plant species
- Enhance & restore understory

### Plant Buffer north/east/south park edges

- Work with park neighbors on buffering plan
- Plantings low water use-enhance wildlife habitat





# Concept for Discussion- Use area

## **Community Response Since 5/10 Public Meeting**

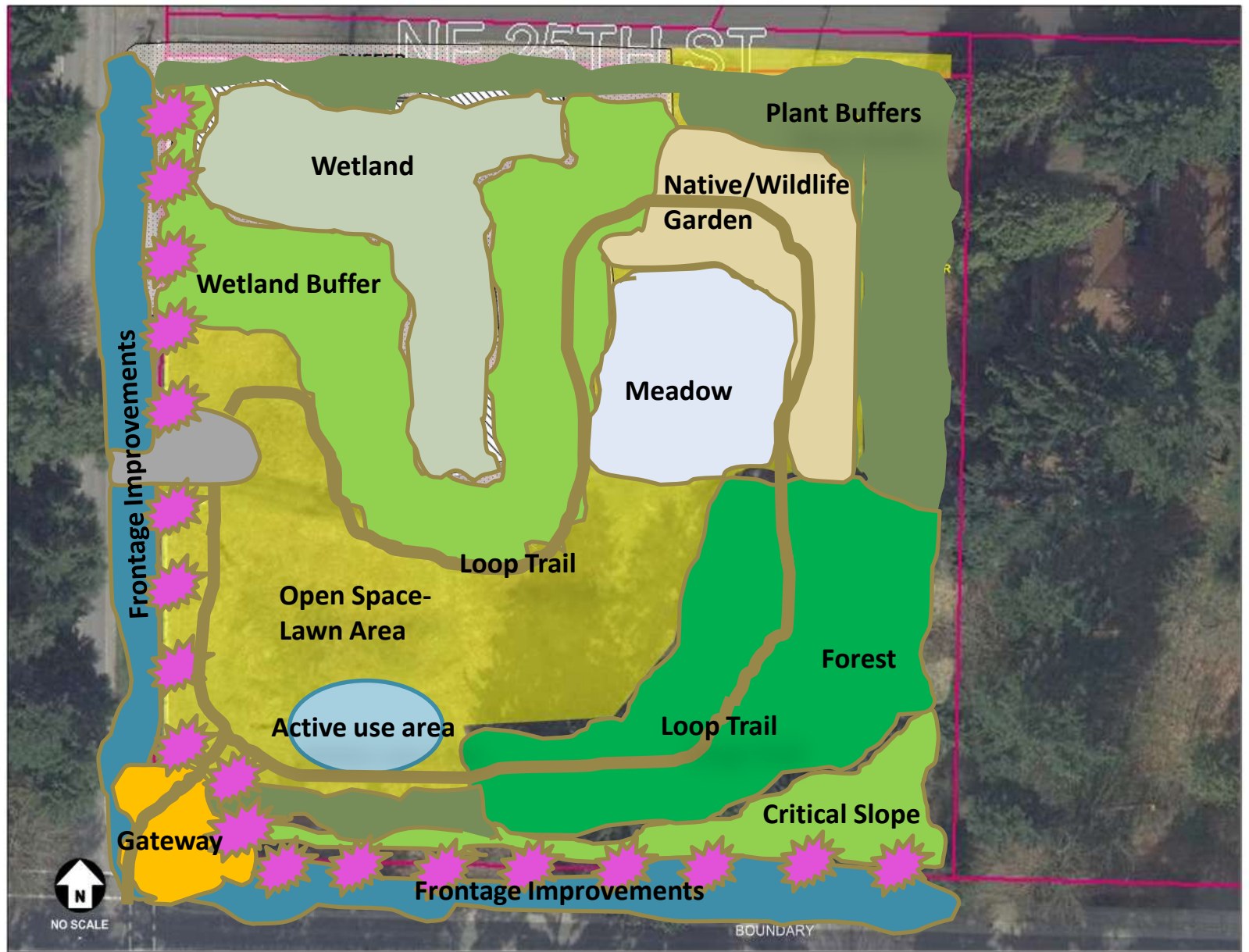
**26 residents attended 5/10 community meeting**

- 5ea Comment Cards received at 5/10 meeting
- 8ea email comments 5/10-6/1



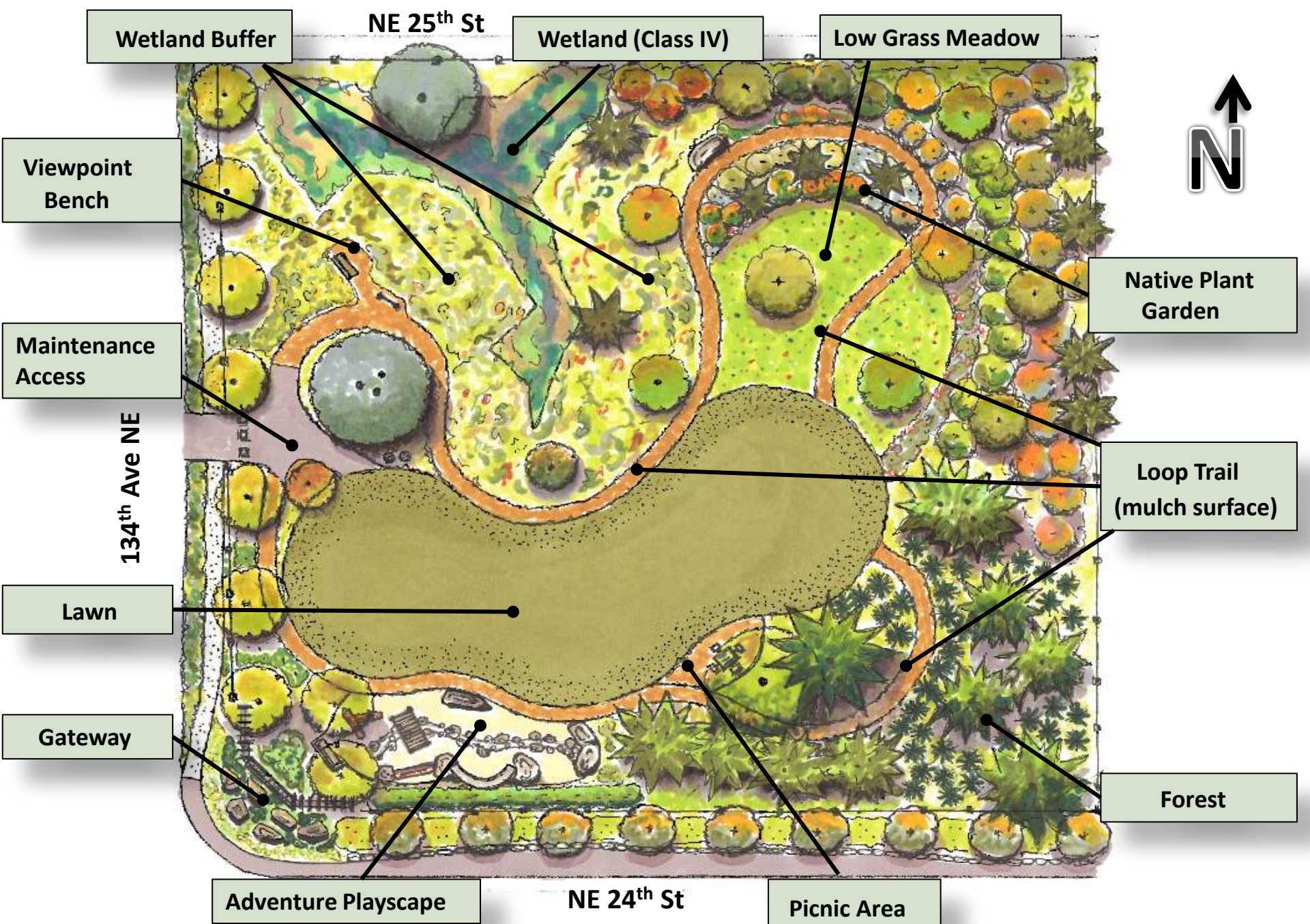
## Park Use and Elements Incorporated into Park Plan

- Bridle Trail Gateway/enhanced connection Viewpoint Park
- Trails
- Play area/elements for Children
- Lawn area for activities
- Picnic Table/benches
- Open Space Meadow
- Frontage Landscape Improvements
- Flowering Trees/native plantings
- Wetland/Tree Protection-Wildlife Habitat Enhancements
- Attractive Landscaping
- Privacy and Plant Buffering for Park neighbors
- Maintain Visibility into Park from NE 24<sup>th</sup> and NE 25<sup>th</sup> St.
- Parking considerations/options



# Concept for Discussion- Use area





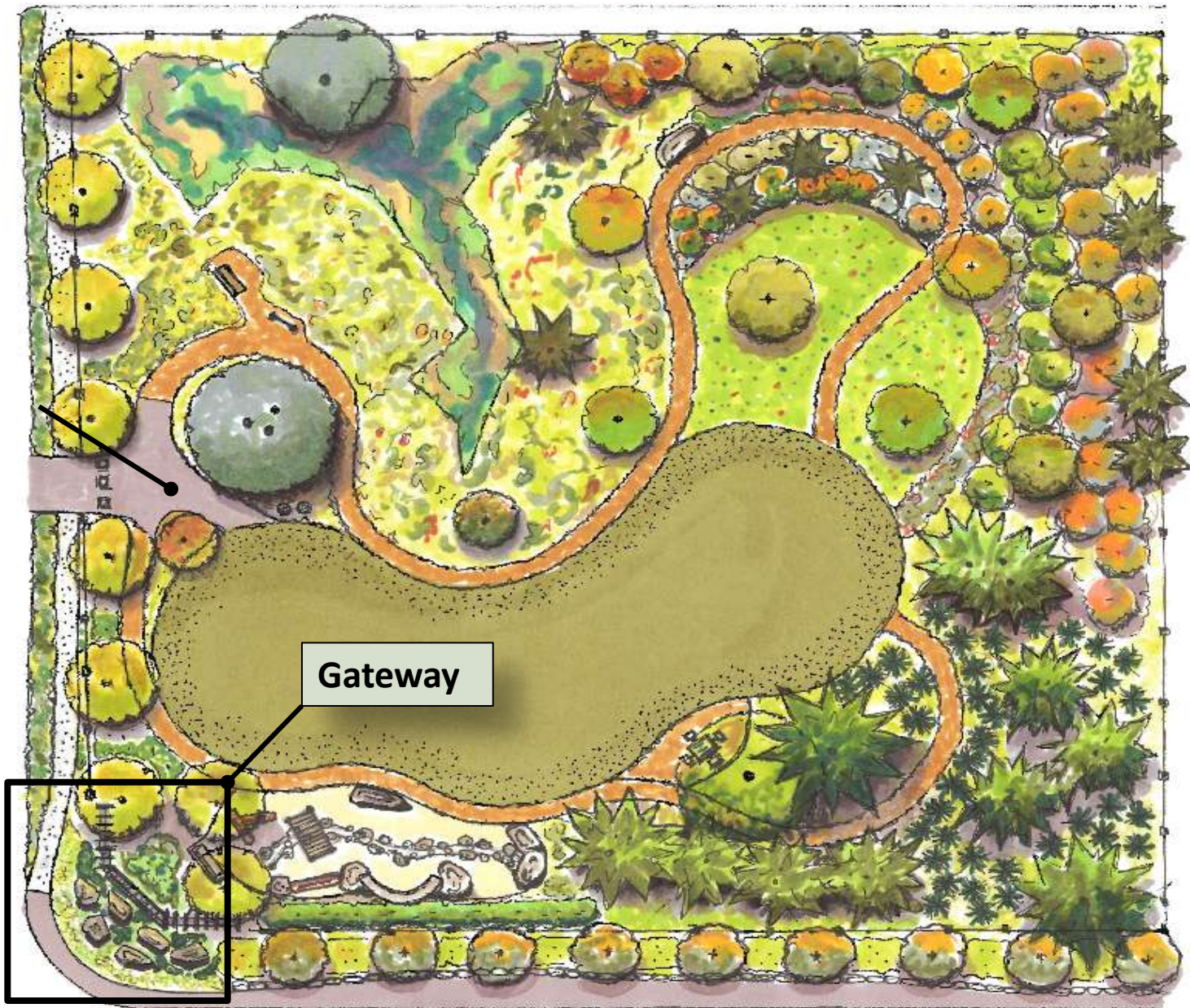
# PRELIMINARY PARK PLAN



NE 25<sup>th</sup> St



134<sup>th</sup> Ave NE



Gateway

NE 24<sup>th</sup> St



## Bridle Trails Gateway and Connection w/ Viewpoint Park



Corner of NE 24th/134<sup>th</sup> NE



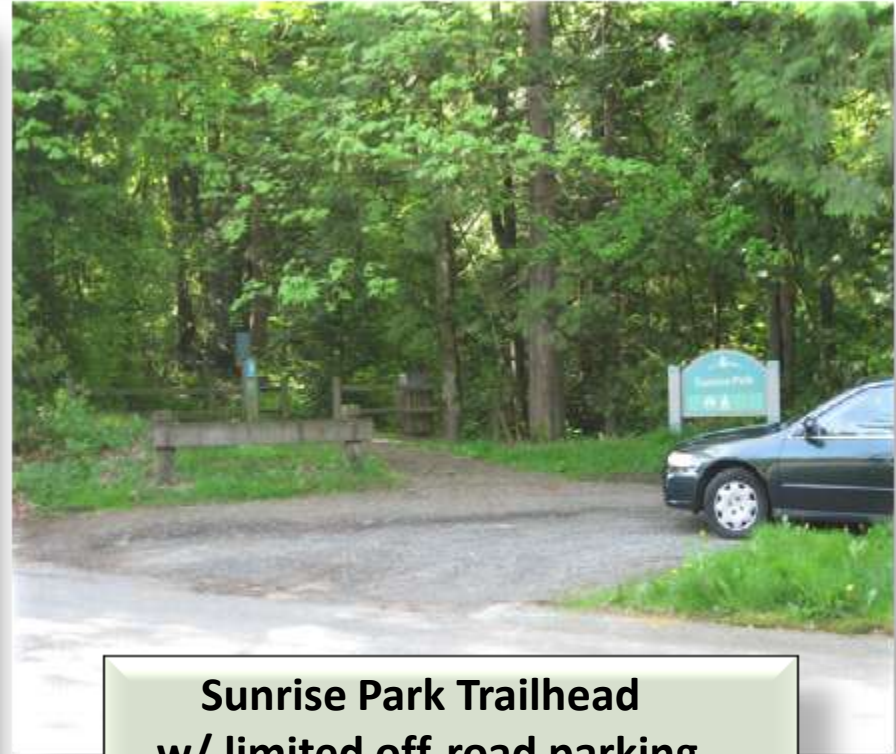
BT Gateway landmark opportunity

- Create and strengthen visual connection between parks
- Enhance SW corner of park property w/ landscaping
- Opportunity for a gateway landmark
- Work w/ BT community on design, budget etc.

## Viewpoint Park Trailhead Improvements



**View Point Park Trailhead**  
No formalized parking

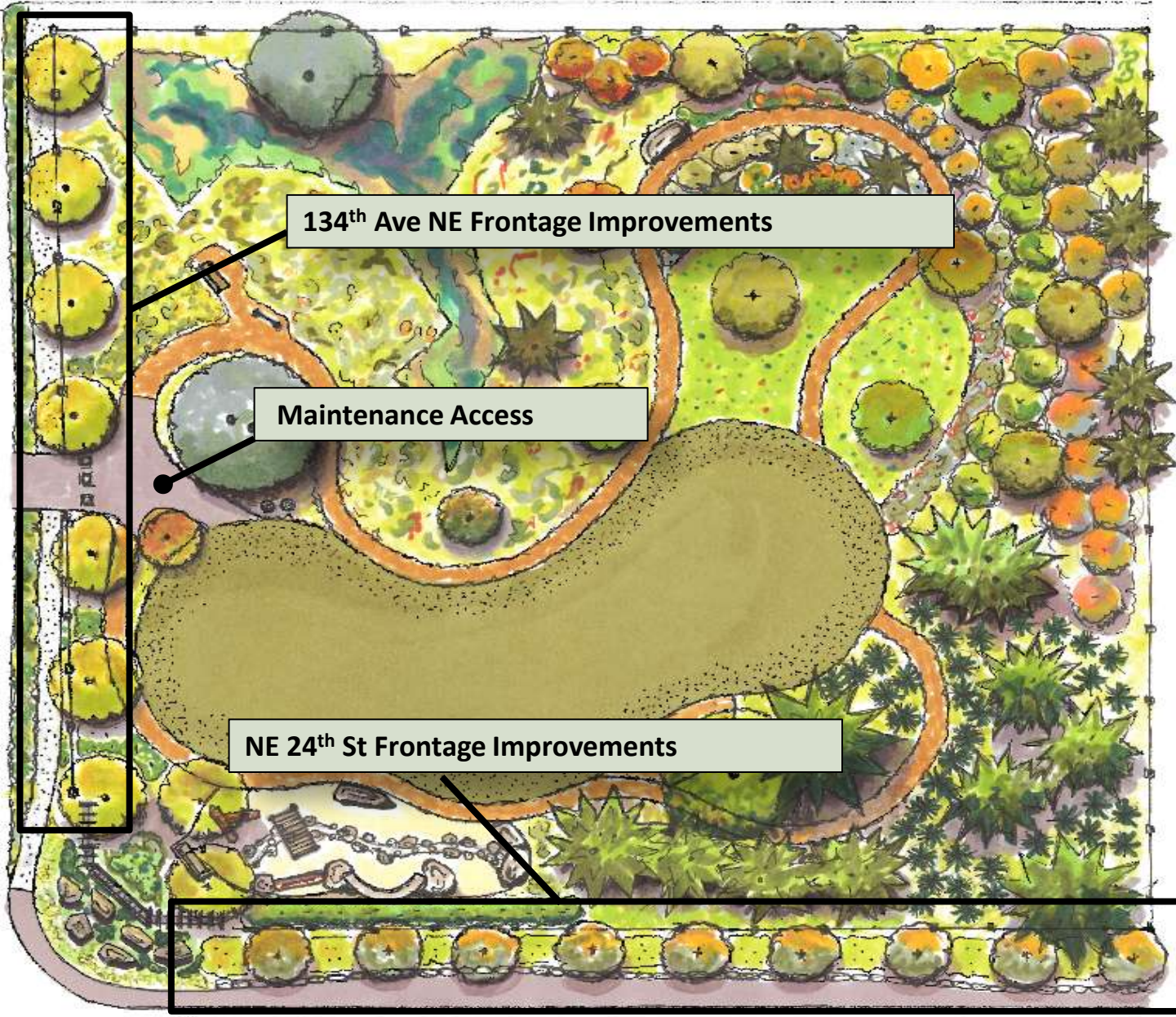


**Sunrise Park Trailhead**  
w/ limited off-road parking

- **Potential formalized limited parking to service both sites (4 spaces)**
- **Enhancement of Trailhead to strengthen park connections**
- **Increased visibility into Trailhead site**



NE 25<sup>th</sup> St



134<sup>th</sup> Ave NE Frontage Improvements

Maintenance Access

NE 24<sup>th</sup> St Frontage Improvements

134<sup>th</sup> Ave NE

Frontage Improvements

NE 24<sup>th</sup> St



## Frontage Improvements NE 24<sup>th</sup> St.



Frontage looking East along NE 24th



Flowering Dogwoods-City Hall

- Remove and replace existing fences along NE 24th
- Remove invasive species/re-plant using low water use varieties
- Plant flowering trees and landscaping along frontage slope

# Frontage Improvements 134<sup>th</sup> Ave NE



Park Frontage looking North along 134th



134<sup>th</sup> Ave NE/ NE 30<sup>th</sup>  
"Rain Garden"

Flowering Crabapples  
Newport Hills Park





# Frontage Improvements 134<sup>th</sup> Ave NE



Site Access off of 134<sup>th</sup> NE



Meadow Wood Park Entry

- **Drainage/Stormwater Improvements (utility requirements)**
- **Pedestrian access improvements at 24<sup>th</sup>/134<sup>th</sup> intersection, pathway/parking improvements, street frontage improvements (Transportation requirements)**
- **Preserve existing crushed path surfacing if possible**
- **Plant flowering trees and landscaping along street frontage**
- **Maintenance Access off of 134<sup>th</sup>, potential option for parking (2-3 spaces)**

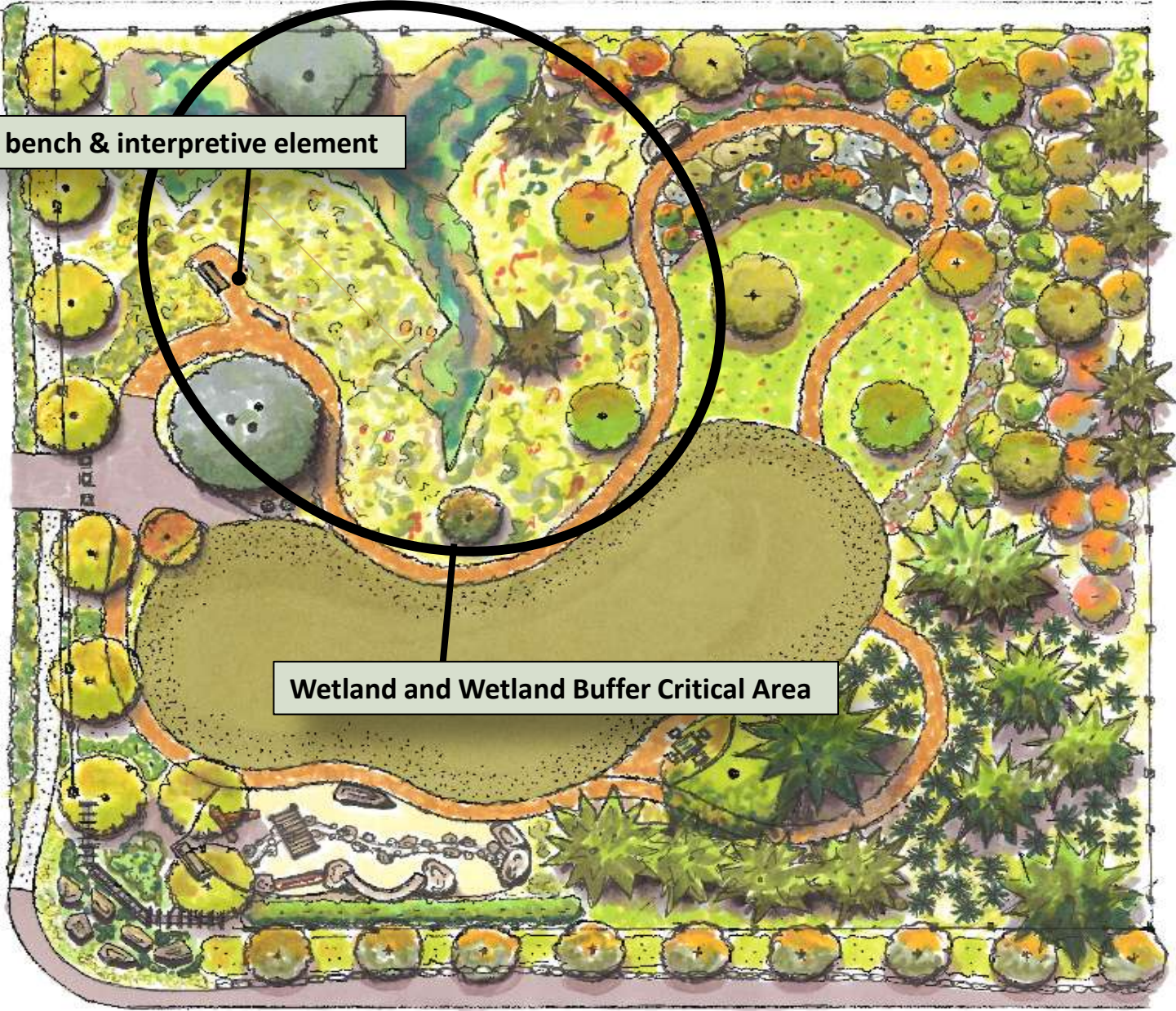


NE 25<sup>th</sup> St



Viewpoint - bench & interpretive element

134<sup>th</sup> Ave NE



Wetland and Wetland Buffer Critical Area

NE 24<sup>th</sup> St

# Wetland and Wetland Buffer Enhancements



# Wetland and Wetland Buffer Enhancements



Wetland and Buffer Area



Ravine Garden Native Garden  
@ Bellevue Botanical Garden

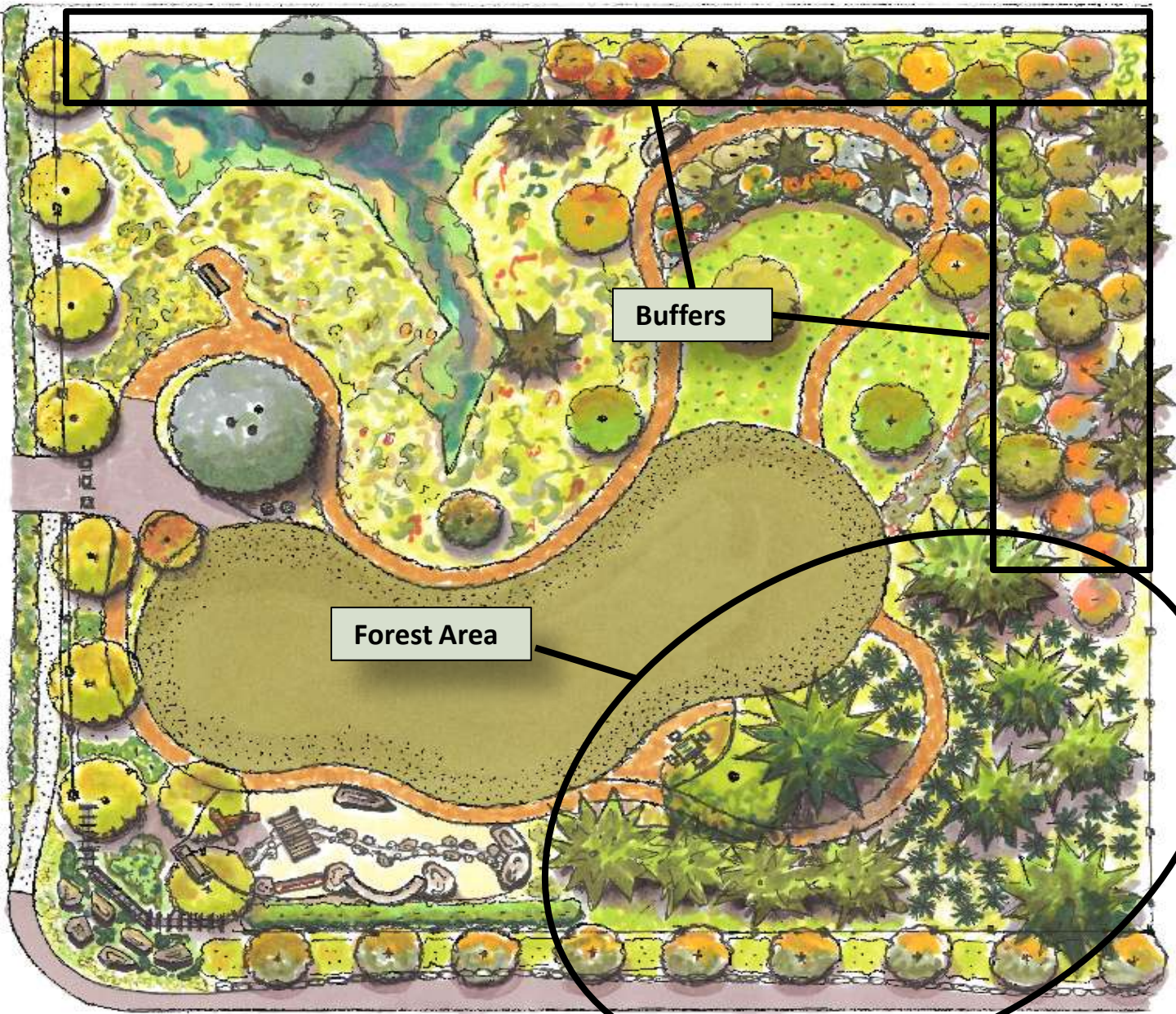
- Remove invasive species
- Bench w/ view of wetland
- Enhance wildlife habitat
- Interpretive opportunity



NE 25<sup>th</sup> St



134<sup>th</sup> Ave NE



Buffers

Forest Area

NE 24<sup>th</sup> St



# Park Edge Buffers & Forested-Slope Area Enhancements



Forest Edge - Invasive Vegetation



Mixed Buffer - City Hall



Fern understory

- **Preserve significant conifers**
- **Remove invasive plant species**
- **Plant added conifers in forest area**
- **Enhance & restore understory**
- **Work with neighbors to provide park buffers**



NE 25<sup>th</sup> St

134<sup>th</sup> Ave NE



Open Lawn Space w/ Loop Trail



NE 24<sup>th</sup> St



## Loop Trail and Open Lawn Space



Rough Mow Area -looking East



Loop Trail-Gass Area  
Tam O' Shanter Park

- Open Lawn area for both active and passive use
- Lawn maintained year around (irrigation recommended)
- Trails w/ surfacing (pervious surfacing recommended)  
variety of environments (wetland, native, meadow, forest)



NE 25<sup>th</sup> St

134<sup>th</sup> Ave NE



NE 24<sup>th</sup> St



# Low Grass Wild Meadow Area



- **Meadow Grass (low grow variety 12-18" Ht.)**
- **Incorporate NW Wildflower Seed Mix**
- **Minimal Maintenance**
- **Trail access**
- **Enhance Wildlife Habitat**



NE 25<sup>th</sup> St

134<sup>th</sup> Ave NE



Native Plant Garden



NE 24<sup>th</sup> St



# Trees, Shrubs & Native Landscaping

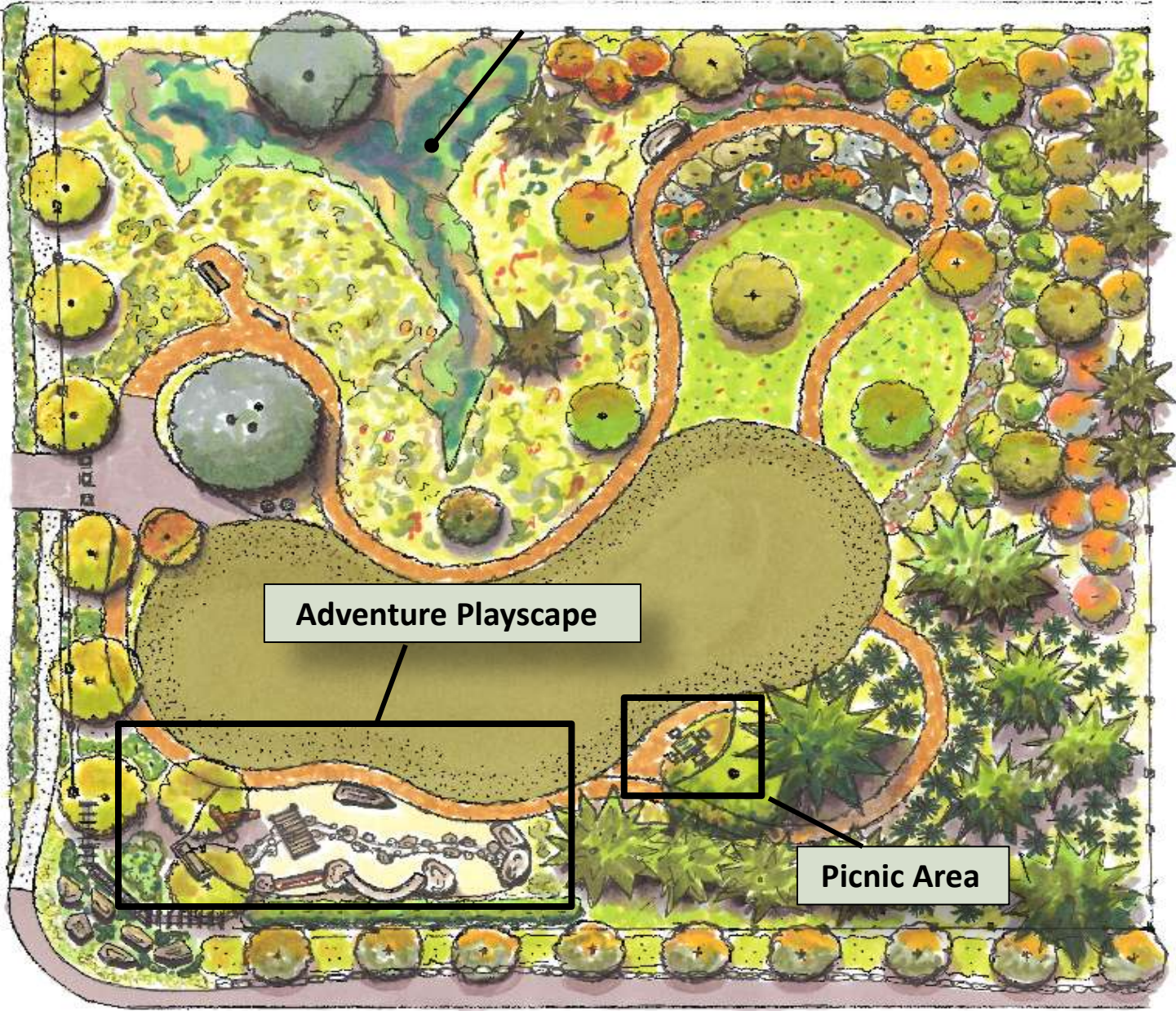


- Predominantly 'low water use' and native plantings
- Wildlife habitat enhancement opportunities
- Irrigation recommended first 2-3 years until plants established



NE 25<sup>th</sup> St

134<sup>th</sup> Ave NE



Adventure Playscape



Picnic Area

NE 24<sup>th</sup> St



# Adventure Playscape

## What is an Adventure Playscape?

They are play environments that blend both natural and man-made materials, features, and vegetation with creative landforms to create purposely complex play spaces with high levels of play value.

Natural playscapes will provide children with all the same benefits as typical playgrounds: gross motor activity, risk taking, problem solving, social interaction, etc. but also teach children about the wonders and intricacies of the natural environment and inspire them to use their imaginations in a way that differs from traditional playgrounds.

# Adventure Playscape





## Other Park Amenities



**Benches**



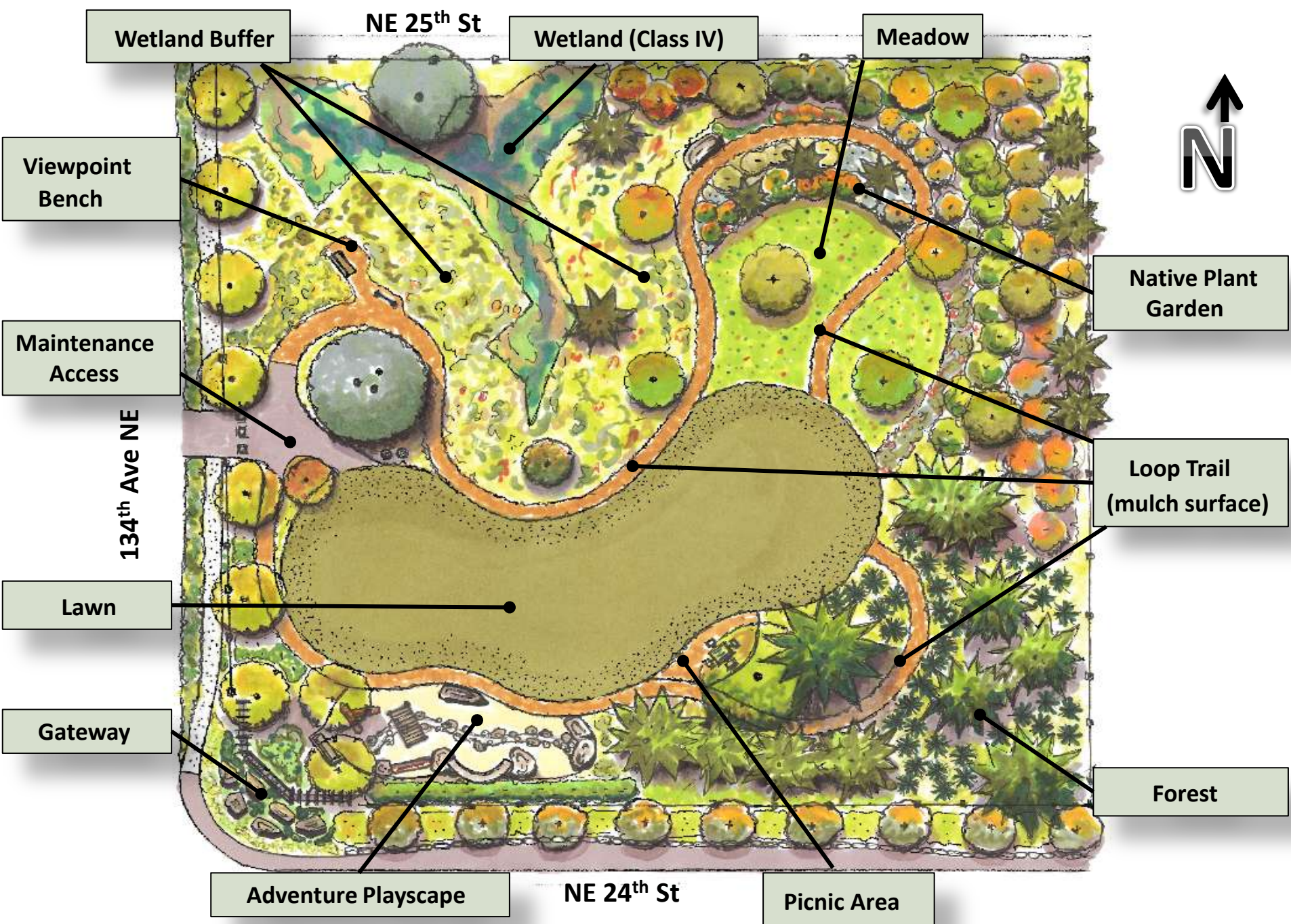
**Picnic Table**

- **Trash Receptacle**
- **Interpretive Element (1ea)**
- **Benches (2 or 3ea)**
- **Picnic Tables (1ea)**
- **Bike Rack**



**Interpretive Element**

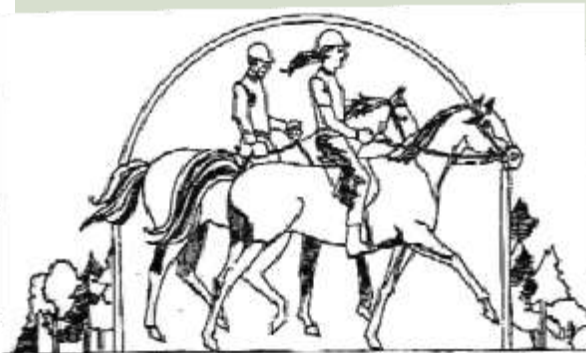






# Next Steps:

- Refine Park Plan based on feedback received from community meetings and discussions with City departments
- Begin Permit process
- Present Plan recommendations to BTCC & Parks Board early Fall



# Opportunities for Feedback & Contact Information

## Bellevue Parks & Community Services

Attn. Scott Vander Hyden  
450 110<sup>th</sup> Ave. NE Bellevue Wa 98004  
425.452.4169  
[Svanderhyden@bellevuewa.gov](mailto:Svanderhyden@bellevuewa.gov)

## Project Website

[http://bellevuewa.gov/bridle\\_trails\\_levy.htm](http://bellevuewa.gov/bridle_trails_levy.htm)

<http://www.bridletrailscommunity.org>





# Questions, Comments & Idea Sharing

