

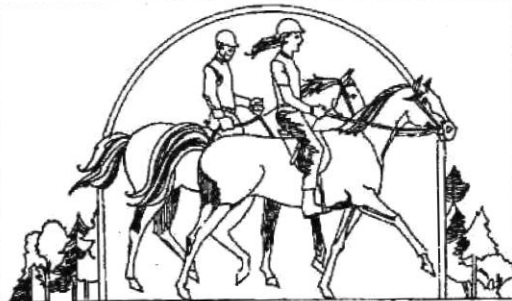
Neighborhood Park Development **Bridle Trails**

140th Ave NE Park (Ginzberg Acquisition)

Community Meeting #3

Feb. 10, 2016 7:00-8:30PM

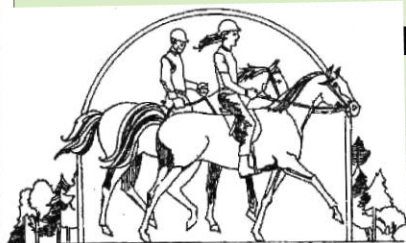
North Bellevue Community Center



Agenda

- **Project Introduction/Review**
- **4432 140th Ave NE (Ginzberg acquisition) Site**
- **Site Information, Opportunities & Challenges**
- **Timeline and Work Complete**
- **Site Photos**
- **Survey Results**
- **Proposed Park Program & Concept Design**
- **Preferred Design**
- **Contact Info & Public Comment Opportunities**

ments, and Idea Sharing

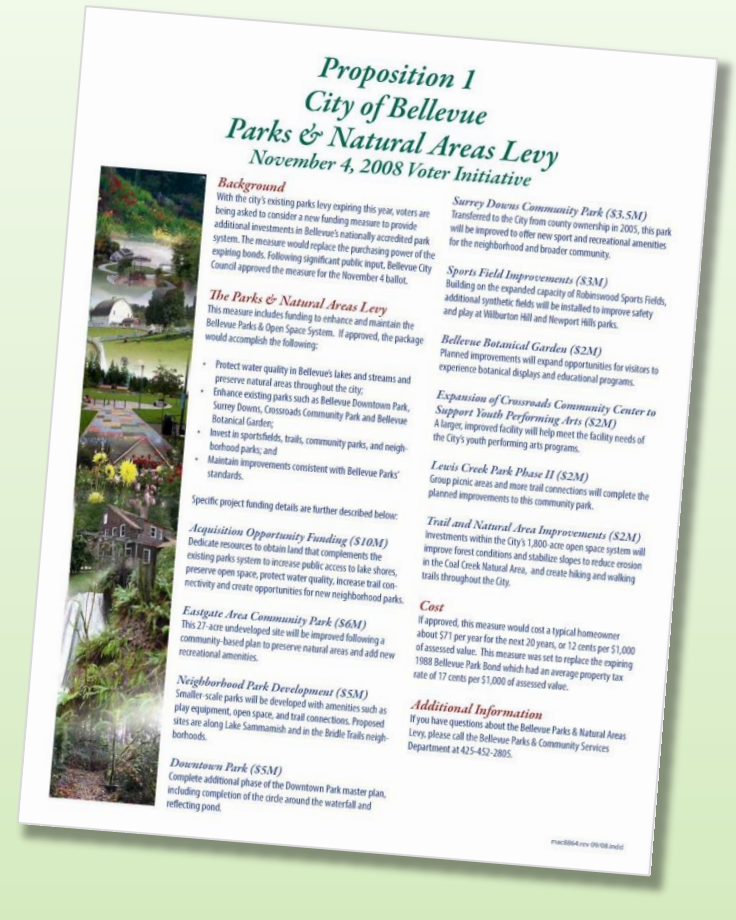




Parks & Natural Areas Levy

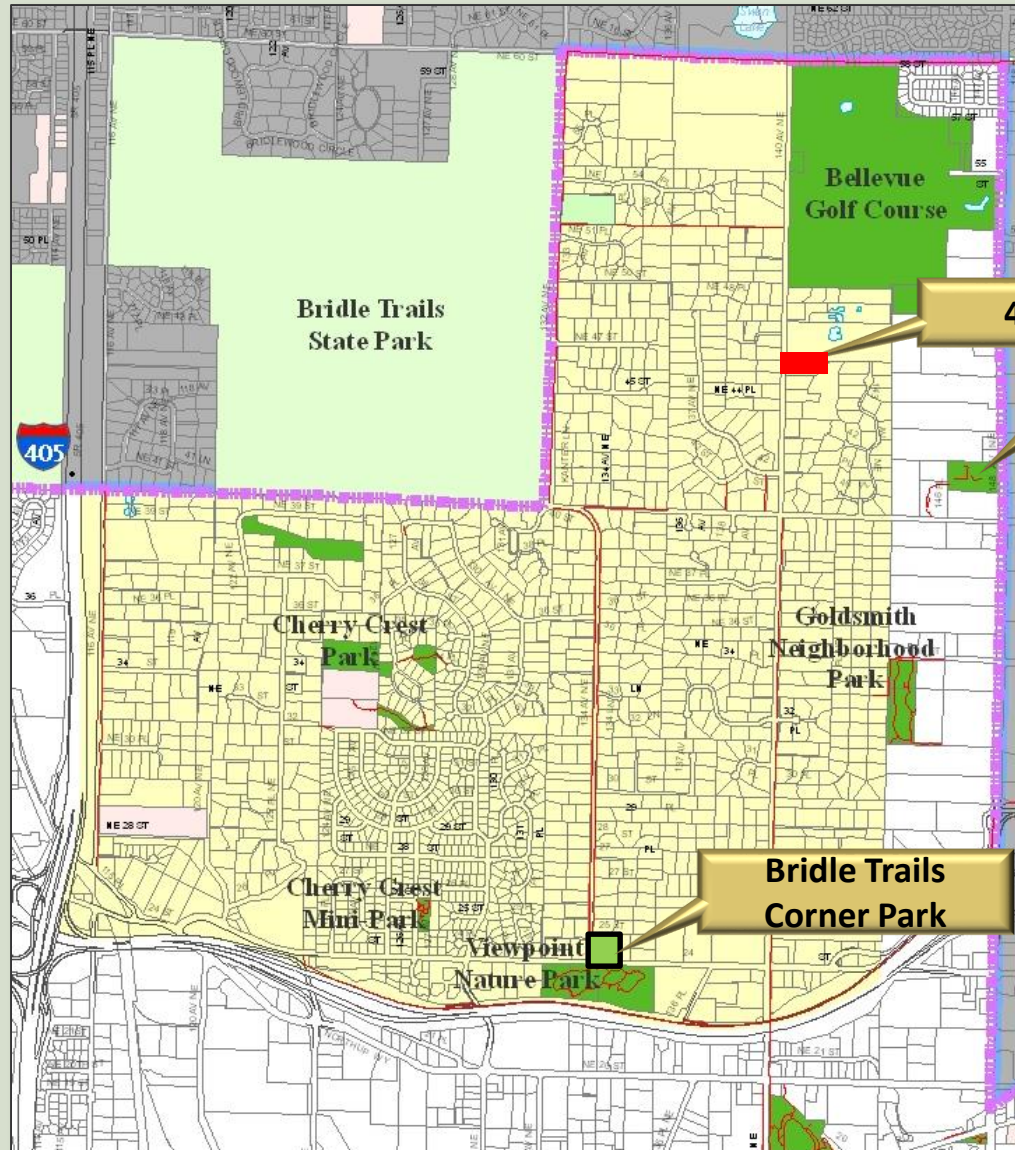
Neighborhood Park Development (\$5M) (2.5M for Bridle Trails Area)

Smaller-scale parks will be developed with amenities such as play equipment, open space, and trail connections. Proposed sites are along Lake Sammamish and in the Bridle Trail neighborhoods.





Bridle Trails Neighborhood



4432 140th Ave NE

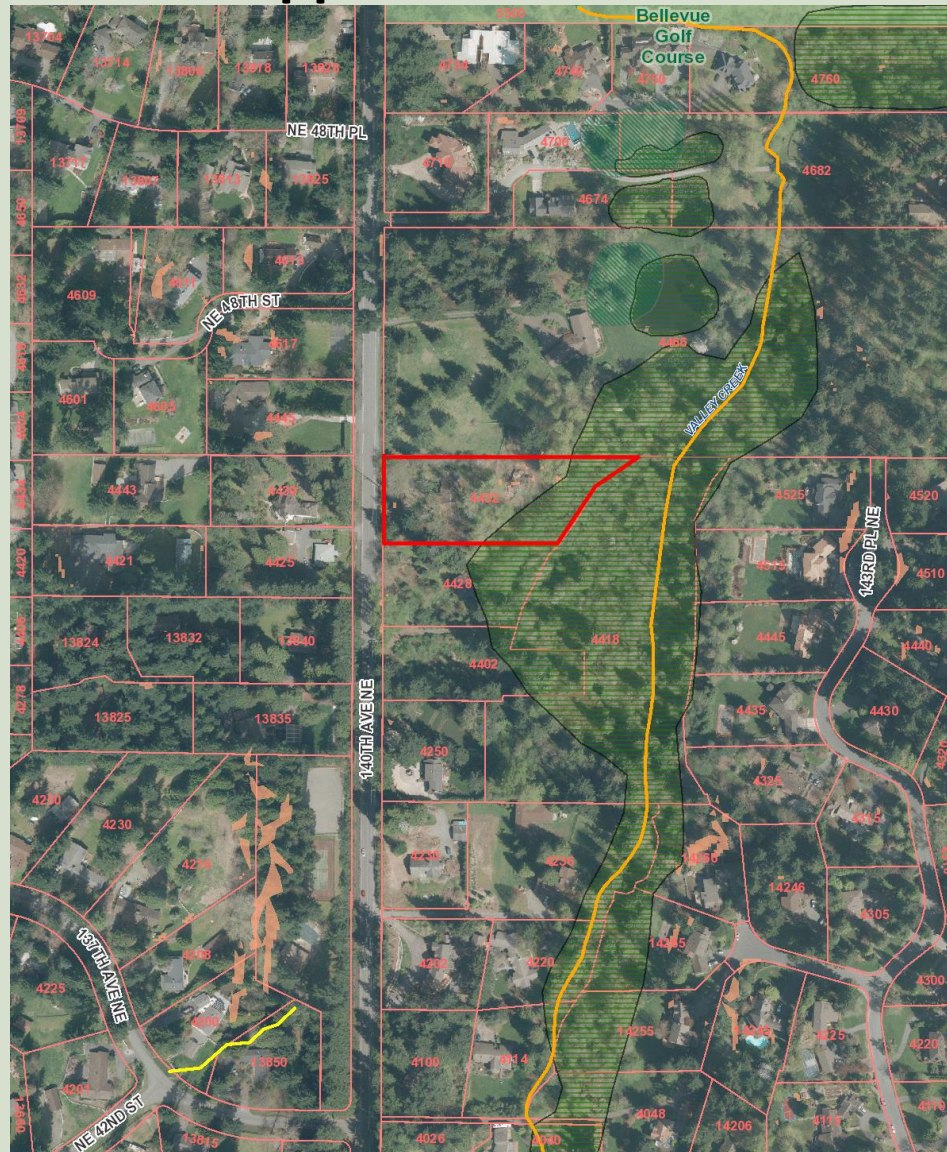
NBCC

Bridle Trails Corner Park



Ginzberg Acquisition Site - 4432 140th Ave NE

Approx. 1.25 Acres



NE 48TH ST

4617

4445

4439

4425

13840

33NE

4432

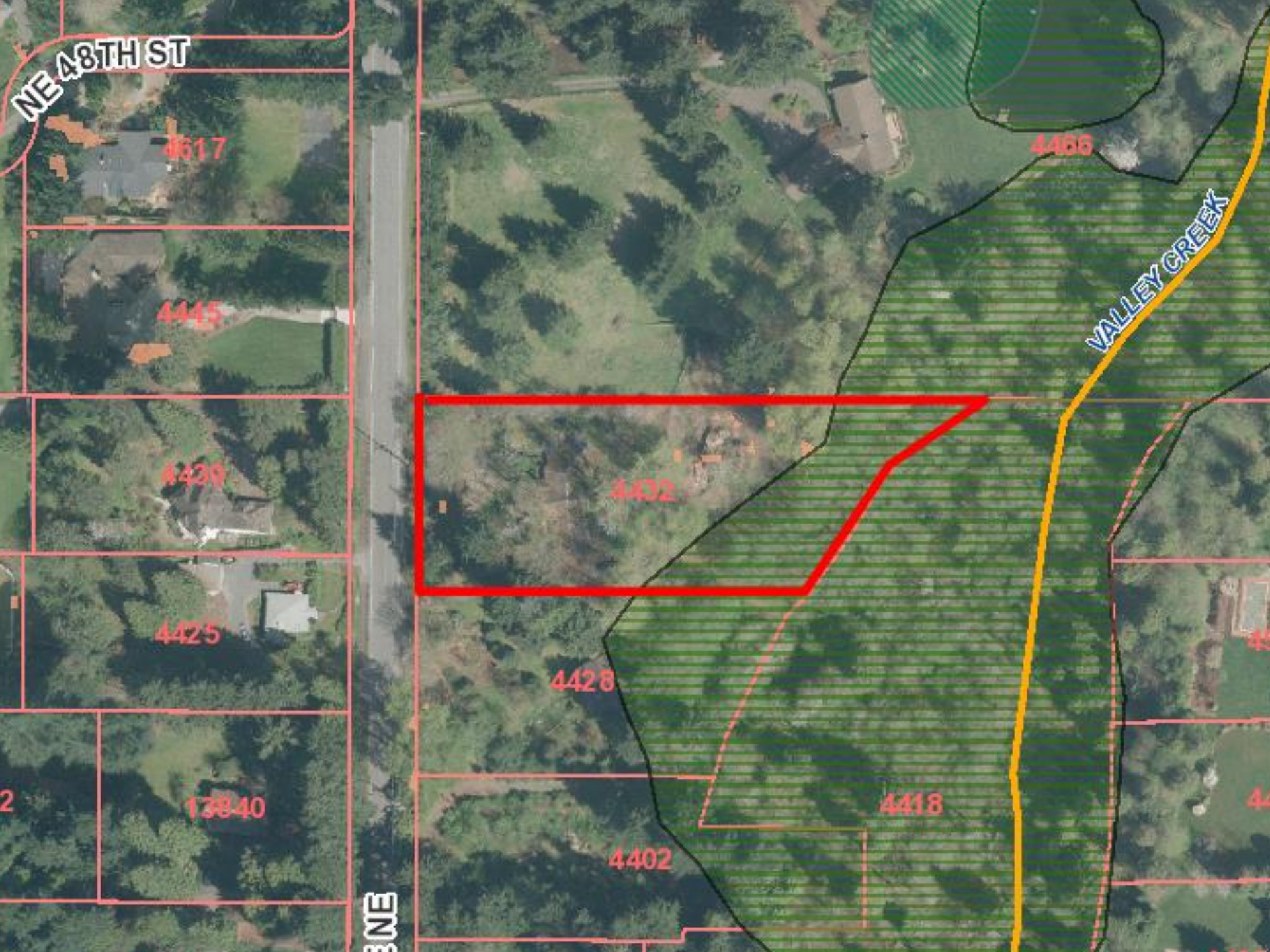
4428

4402

4418

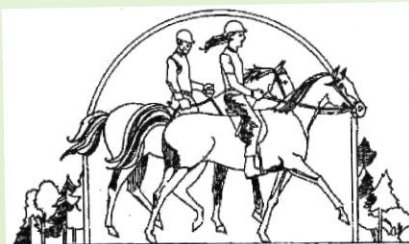
4466

VALLEY CREEK



Project Milestones

- Property acquired and purchase approved by Bellevue CC (early 2015)
- Kick-off community meeting (May 13, 2015)
- On-line survey (May-July, 2015)
- House demolition complete (August 2015)
- Second community meeting (Oct. 7, 2015)

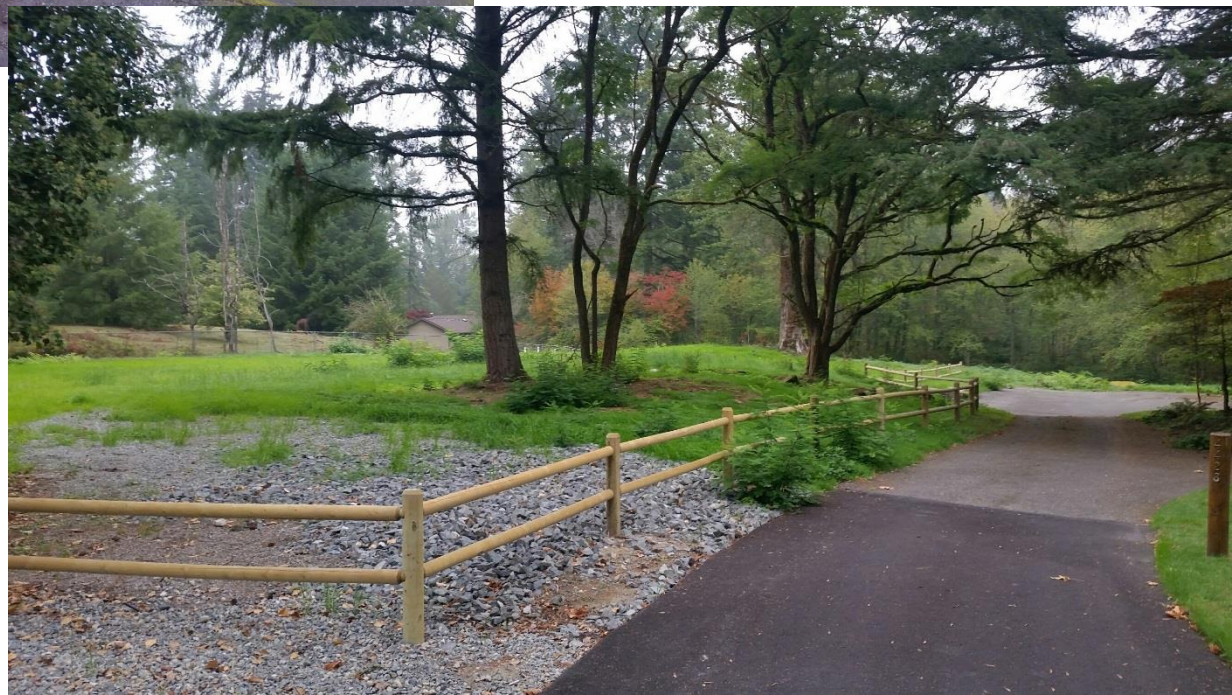


Site looking east from current 140th Ave. shared entry



Before

After House Demo





Looking east from proposed park entry



Looking east toward NGPA from high point

On-line Survey & Comments Received Results-Total Respondents 55

(2nd Community Meeting)

Question: What type of improvements would you like to see in the new neighborhood park?

Playground-25

Trails-16 & Nature Viewing and/or Interpretive Elements- 10

Open lawn area for play/non-programed sports- 10

Picnic shelter/covered gathering area- 9 & Picnic Table/BBQ/Benches- 6

Sports Court- 5

Pedestrian access, improvements /crosswalk-4

Adequate Parking- 4

Minimal improvements, no development or leave natural- 4

Bathrooms- 3

Dog Park- 2

Adult activities- 2

Bike Riding access - 2

Community Garden-1

Did not respond to question- 8



Play Areas Ages 2-5, 5-12 & Adventure Play



Open Space, Trails, Amenities Interpretive Elements



Picnic- Gathering Shelter

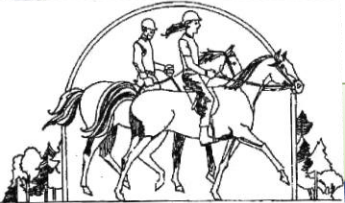


Concept only

BRIDLE TRAILS NEIGHBORHOOD – 4432 140th Ave. NE (Ginzberg Acquisition)



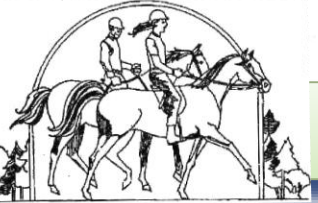
Concept Plan View- A (2nd Community meeting)



BRIDLE TRAILS NEIGHBORHOOD – 4432 140thAve. NE (Ginzberg Acquisition)



Concept Plan View- B (2nd community meeting)



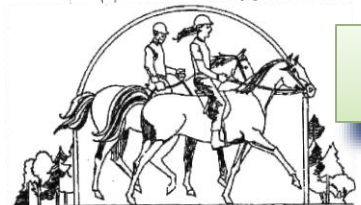
What we heard at the 2nd Community Meeting & after (incorporations in preferred plan in *italic*)

- Sufficient parking (*increased capacity by 1/3*);
 - Pedestrian park access and connections to surrounding neighborhoods (*flashing crosswalk proposed*);
 - Picnic Shelter (*smaller scale included*);
 - *ADA accessible loop trail*
 - Older kids-adventure play area (*included*);
- Interpretive elements and benches (*included*);
 - Security of adjacent homeowners;
 - ROW improvements eastside of 140th (*Asphalt walkway along park frontage proposed*)

BRIDLE TRAILS NEIGHBORHOOD – 4432 140th Ave. NE (Ginzberg Acquisition)

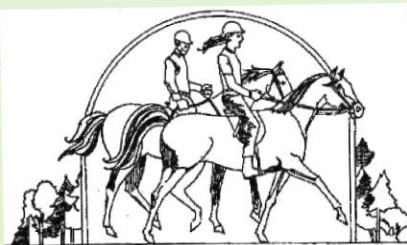


Preferred Park Plan



Preferred Park Program

- Play areas ages 2-5, 5-12 & adventure play
- Picnic shelter for community gathering Approx. 20'x20'
- On-Site Parking (total spaces max.12)
- Crosswalk for pedestrian accessibility (proposed flashing)
- Picnic tables & benches
- Both hard and soft surfaces paths & loop trail
- Interpretive Signage
- Open lawn area for non-programmed sports and play
- Native plantings and wildlife viewing
- ROW frontage Improvements (incl. asphalt pathway)



Next Steps:

- Community feedback
- Parks to continue coordination with other departments
Utilities, Land Use, Transportation
- Finalize plan/program
- Park Board Recommendation (March or April 2016)
- Council Plan Approval (2nd quarter 2016)



Opportunities for Feedback & Contact Information

Bellevue Parks & Community Services

Attn. Scott Vander Hyden

450 110th Ave. NE Bellevue Wa 98004

425.452.4169

Svanderhyden@bellevuewa.gov

Project Website

http://bellevuewa.gov/bridle_trails_levy.htm



Questions & Comments

