

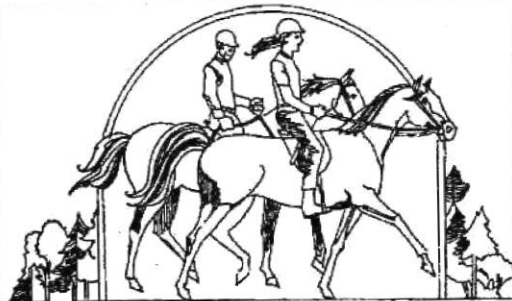
Neighborhood Park Development **Bridle Trails**

140th Ave NE Park (Ginzberg Acquisition)

Community Meeting #2

October 7, 2015

North Bellevue Community Center



Agenda

- **Project Introduction/Background**
- **4432 140th Ave NE (Ginzberg) Site**
- **Site Information, Opportunities & Challenges**
- **Timeline and Work Complete**
- **Site Photos**
- **Survey Results**
- **Proposed Park Program & Concept Design**
- **Contact Info & Public Comment Opportunities**
- **Q&A, Comments, and Idea Sharing**

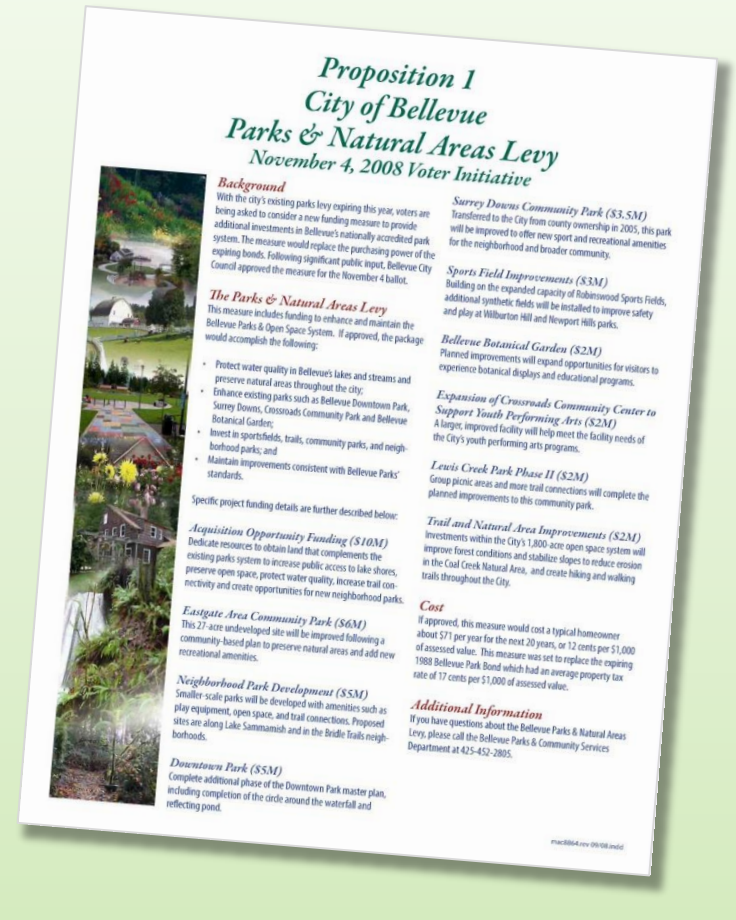




Parks & Natural Areas Levy

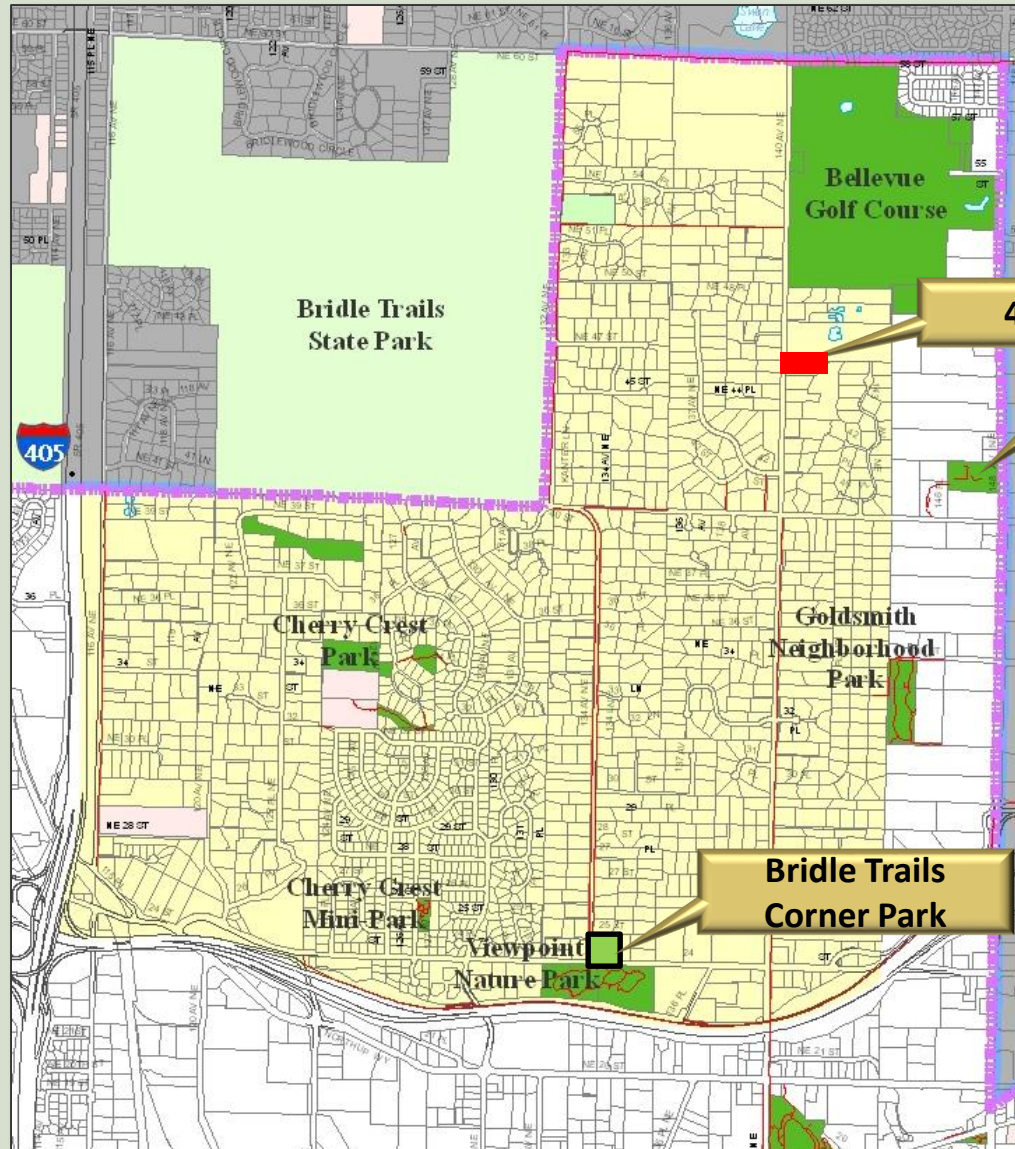
Neighborhood Park Development (\$5M) (2.5M for Bridle Trails Area)

Smaller-scale parks will be developed with amenities such as play equipment, open space, and trail connections. Proposed sites are along Lake Sammamish and in the Bridle Trail neighborhoods.





Bridle Trails Neighborhood



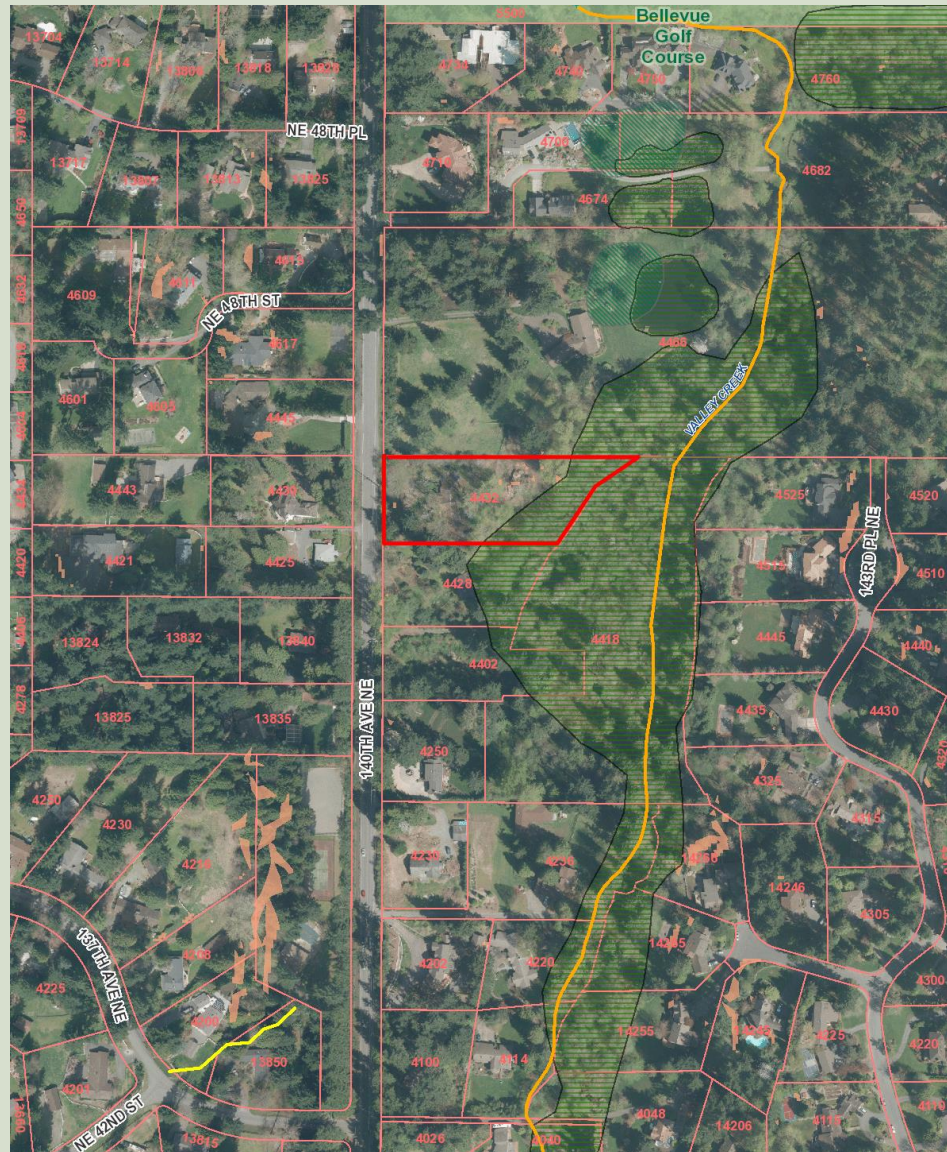
4432 140th Ave NE

NBCC

Bridle Trails Corner Park



Ginzberg Acquisition Site - 4432 140th Ave NE



NE 48TH ST

4417

4445

4439

4425

13840

33NE

4432

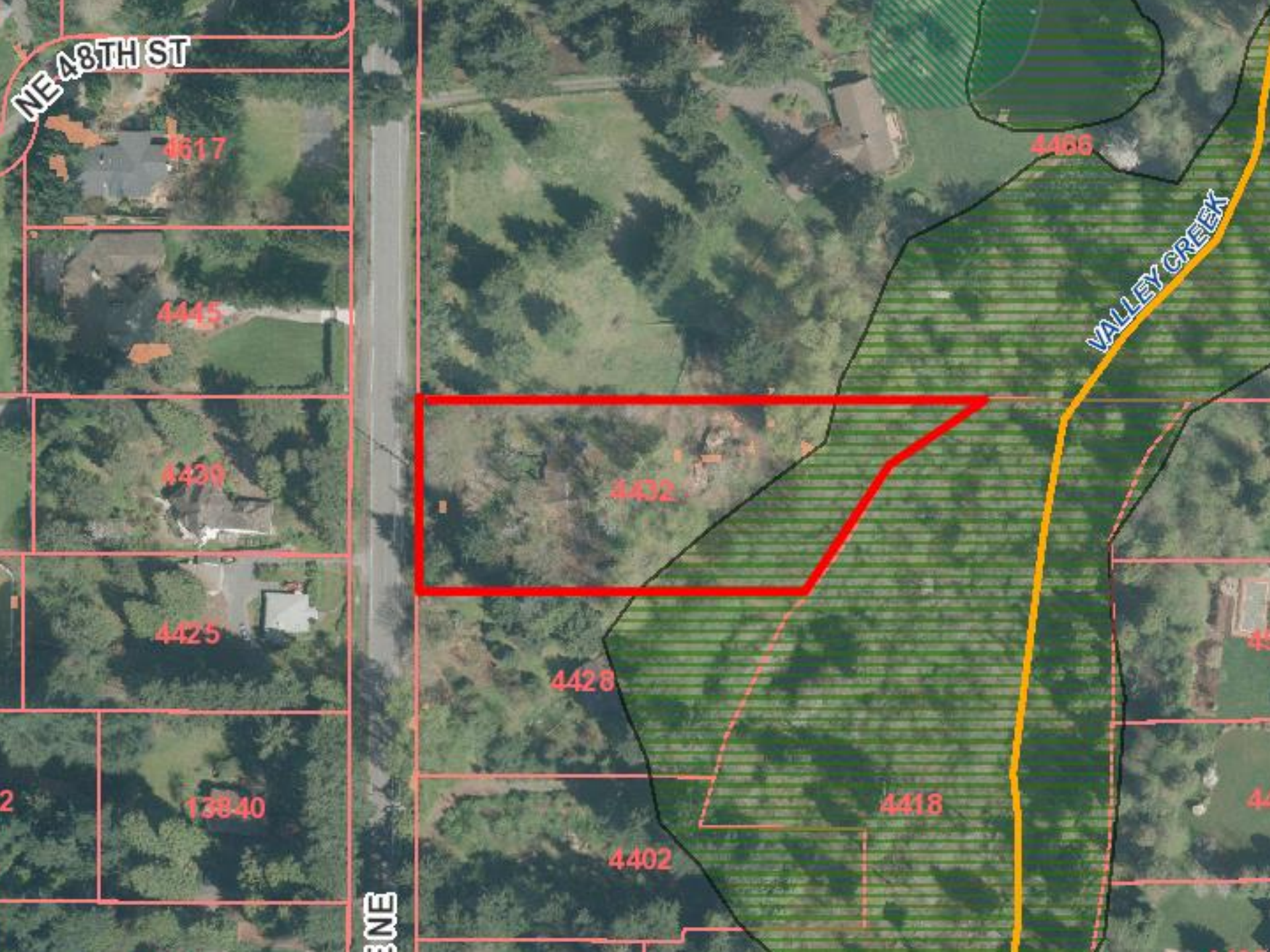
4428

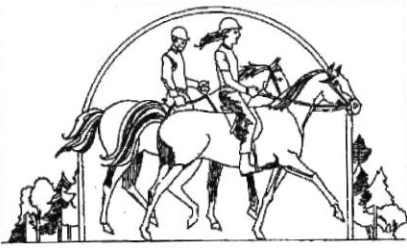
4402

4418

4466

VALLEY CREEK





OPPORTUNITIES & CHALLENGES

- Adjacent wetland/wetland buffer
- Desirable park location on main thoroughfare
- No nearby sewer line
- Gently sloping 1.25 acre parcel- good sunlight
- Surrounding wildlife habitat and viewing
- No sidewalk on eastside of 140th
- No on-street parking



Timeline & Work Complete

- Site survey and wetland delineation completed as part of purchase (2015)
- Property acquired and purchase approved by Bellevue CC (early 2015)
- Kick-off community meeting (May 13, 2015)
- House demolition complete (August 2015)
- No funding in current Parks budget for park development



Site looking east from current 140th ave. shared entry



Before

After House Demo





Looking east from proposed park entry



Looking east at NGPA from high point

On-line Survey & Comments Received Results-Total Respondents 55

Question: What type of improvements would you like to see in the new neighborhood park?

Playground-25

Trails-16 & Nature Viewing and/or Interpretive Elements- 10

Open lawn area for play/non-programed sports- 10

Picnic shelter/covered gathering area- 9 & Picnic Table/BBQ/Benches- 6

Sports Court- 5

Pedestrian access, improvements /crosswalk-4

Adequate Parking- 4

Minimal improvements, no development or leave natural- 4

Bathrooms- 3

Dog Park- 2

Adult activities- 2

Bike Riding access - 2

Community Garden-1

Did not respond to question- 8

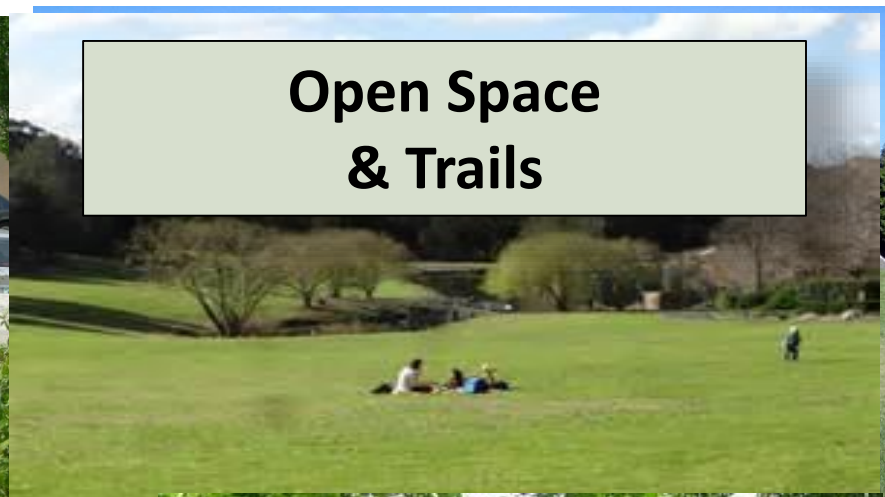


Play Areas

Ages 2-5 & 5-12 & Adventure-Natural

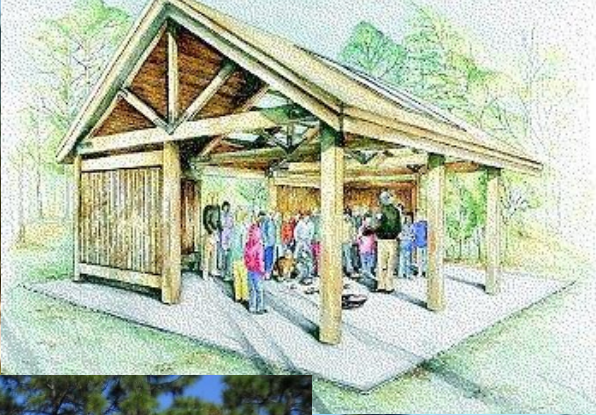


Open Space & Trails



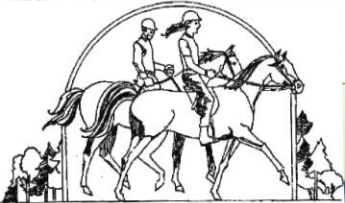
Natural elements & Landforms in the landscape





Shelters and Community Gathering Spaces

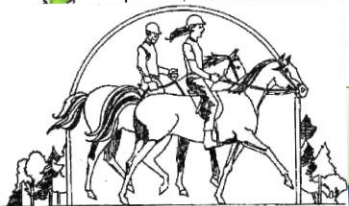
BRIDLE TRAILS NEIGHBORHOOD – 4432 140th Ave. NE (Ginzberg Acquisition)



Concept Plan View- A



BRIDLE TRAILS NEIGHBORHOOD – 4432 140thAve. NE (Ginzberg Acquisition)

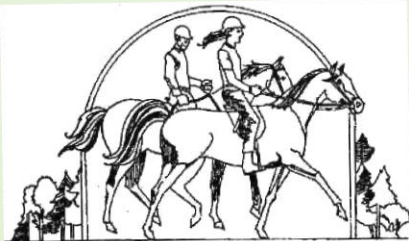


Concept Plan View- B



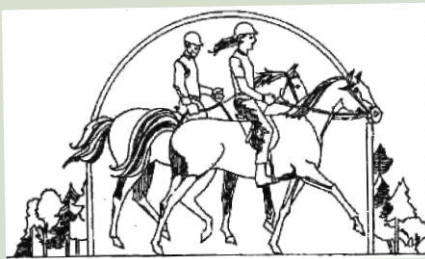
Proposed Park Programs A&B

- Play areas ages 2-5 and 5-12, incorporate both structured and adventure play
- *Separate adventure/natural play (A only);*
- *Picnic shelter for community gathering (A only)*
- On-Site Parking (total spaces TBD)
- Crosswalk for pedestrian accessibility (TD must approve)
- Picnic tables & benches
- Both hard and soft surfaces paths & loop trail
- Interpretive Signage
- Open lawn area for non-programmed sports and play
- Native plantings and wildlife viewing



Next Steps.

- Community feedback;
- Parks to coordinate with other departments
Utilities, Land Use, Transportation, & consultants;
- Prepare preferred park plan design, incorporate
information received;
- 3rd Public Meeting Feb. 10, 2016 to present preferred park
plan;
- Park Board Plan Approval (April 2016);
- Council Plan Approval (second quarter 2016).



Opportunities for Feedback & Contact Information

Bellevue Parks & Community Services

Attn. Scott Vander Hyden

450 110th Ave. NE Bellevue Wa 98004

425.452.4169

Svanderhyden@bellevuewa.gov

Project Website

http://bellevuewa.gov/bridle_trails_levy.htm



Questions, Comments & Idea Sharing

