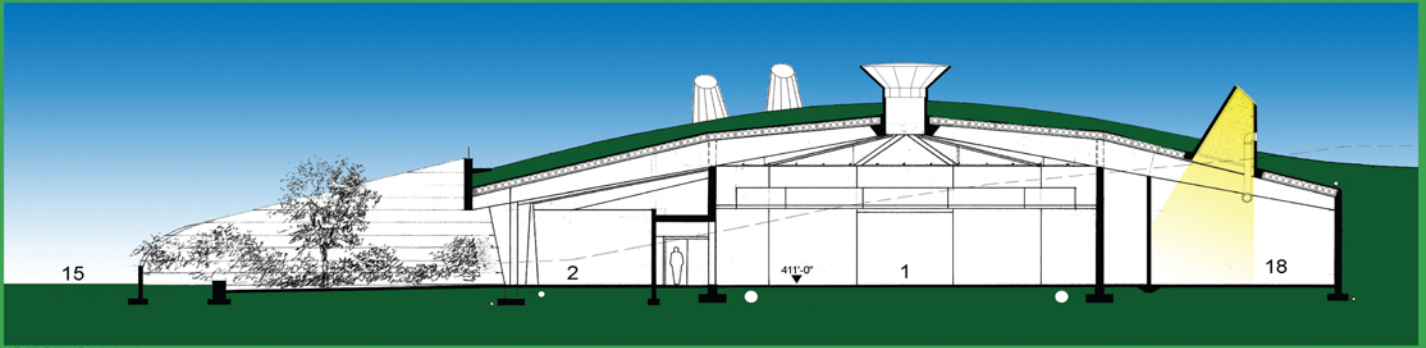


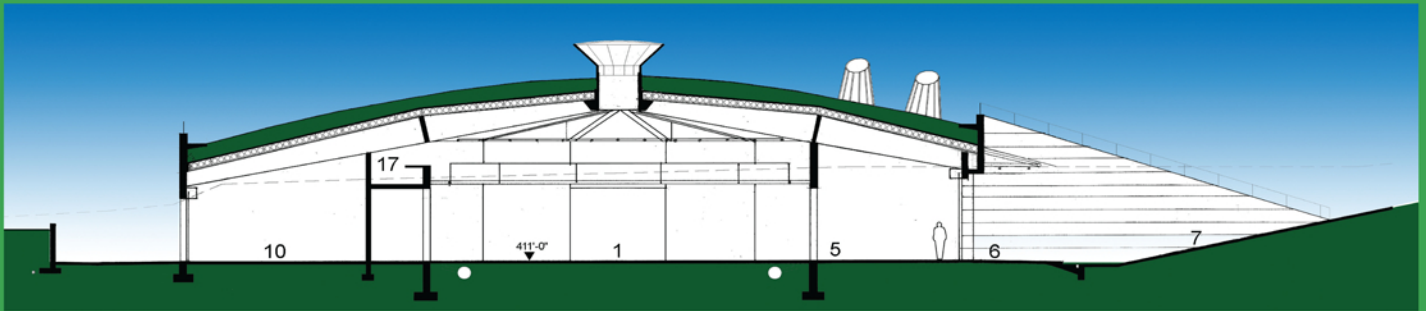
# BELLEVUE YOUTH THEATRE

CITY OF BELLEVUE PARKS AND COMMUNITY SERVICE DEPARTMENT

BECKER ARCHITECTS



SECTION A-A  
1/8" = 1'-0"



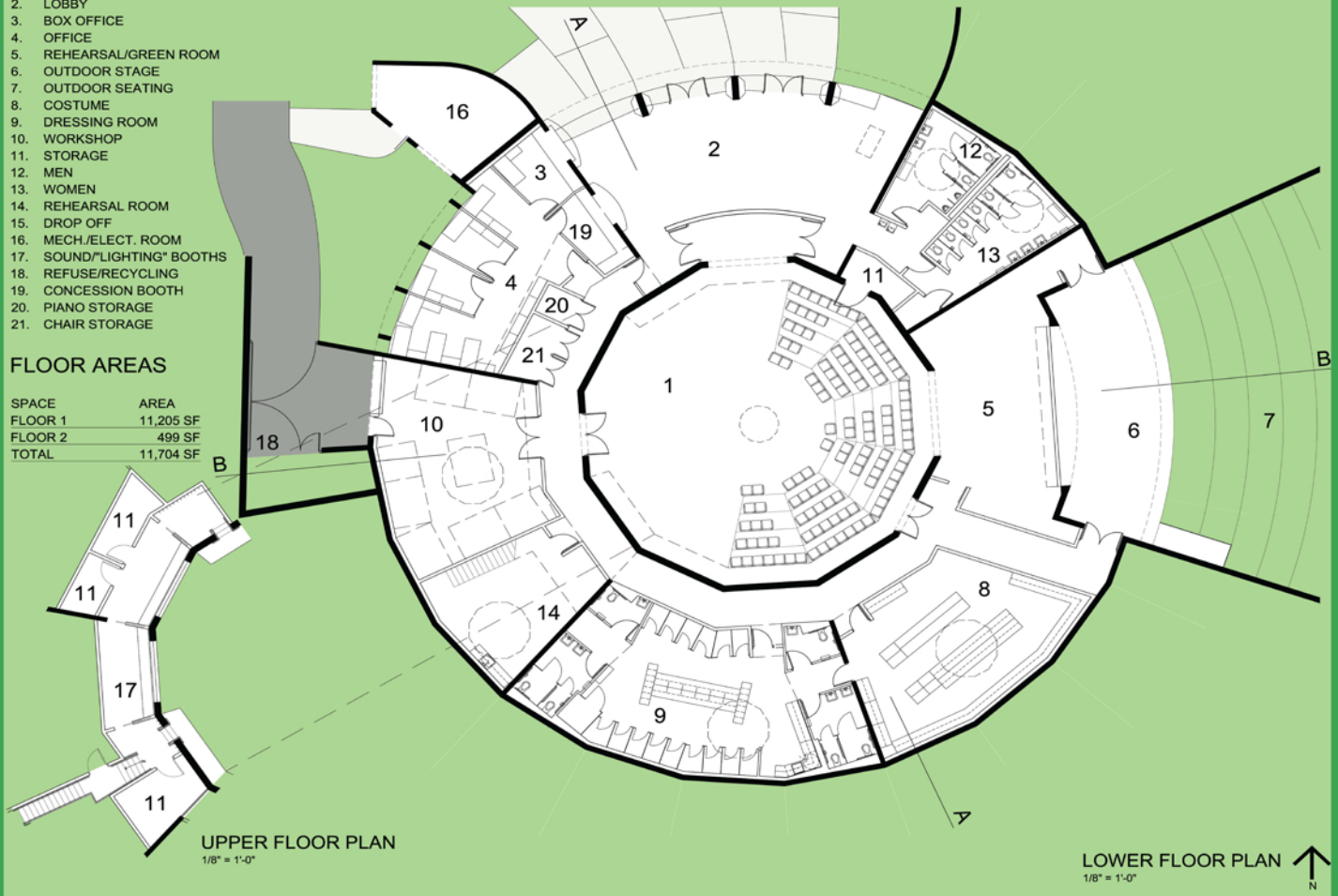
SECTION B-B  
1/8" = 1'-0"

LEGEND

- 1. 110 SEAT THEATRE
- 2. LOBBY
- 3. BOX OFFICE
- 4. OFFICE
- 5. REHEARSAL/GREEN ROOM
- 6. OUTDOOR STAGE
- 7. OUTDOOR SEATING
- 8. COSTUME
- 9. DRESSING ROOM
- 10. WORKSHOP
- 11. STORAGE
- 12. MEN
- 13. WOMEN
- 14. REHEARSAL ROOM
- 15. DROP OFF
- 16. MECH./ELECT. ROOM
- 17. SOUND/"LIGHTING" BOOTHS
- 18. REFUSE/RECYCLING
- 19. CONCESSION BOOTH
- 20. PIANO STORAGE
- 21. CHAIR STORAGE

FLOOR AREAS

SPACE	AREA
FLOOR 1	11,205 SF
FLOOR 2	499 SF
TOTAL	11,704 SF



UPPER FLOOR PLAN  
1/8" = 1'-0"

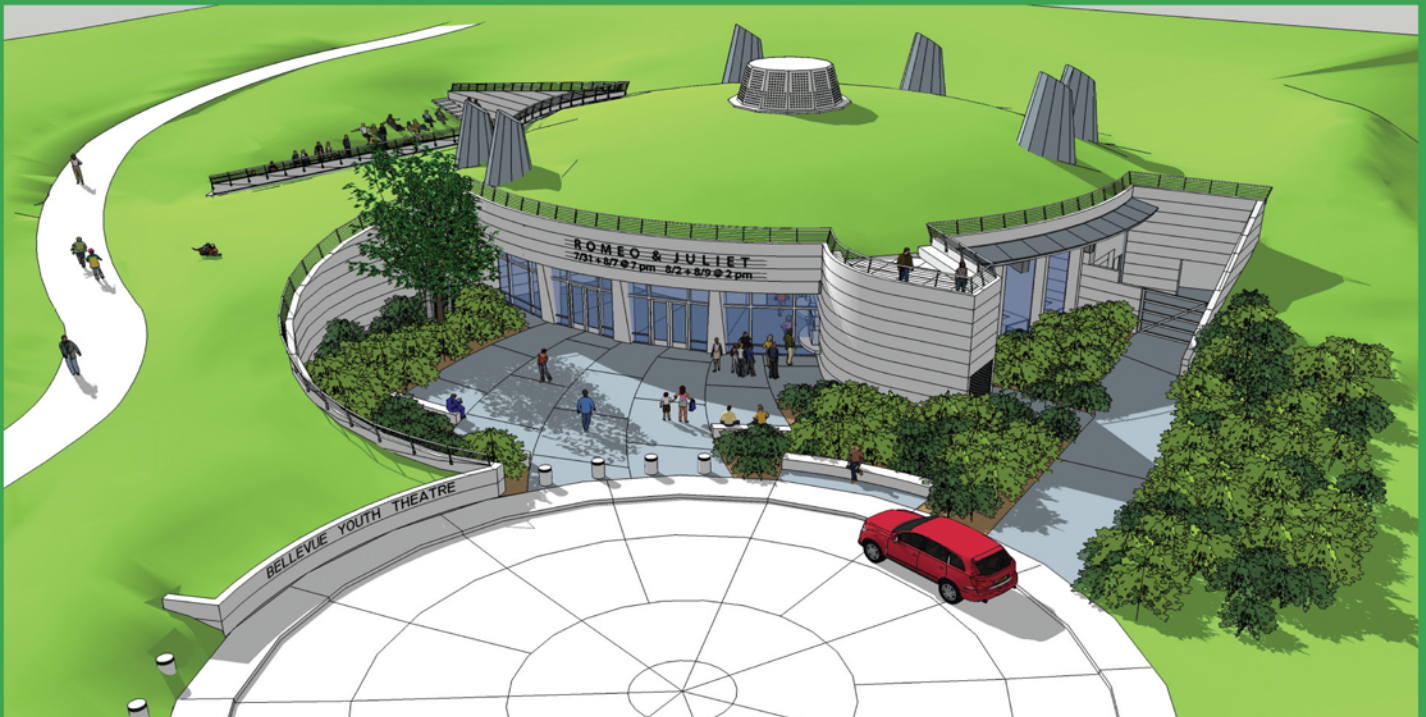
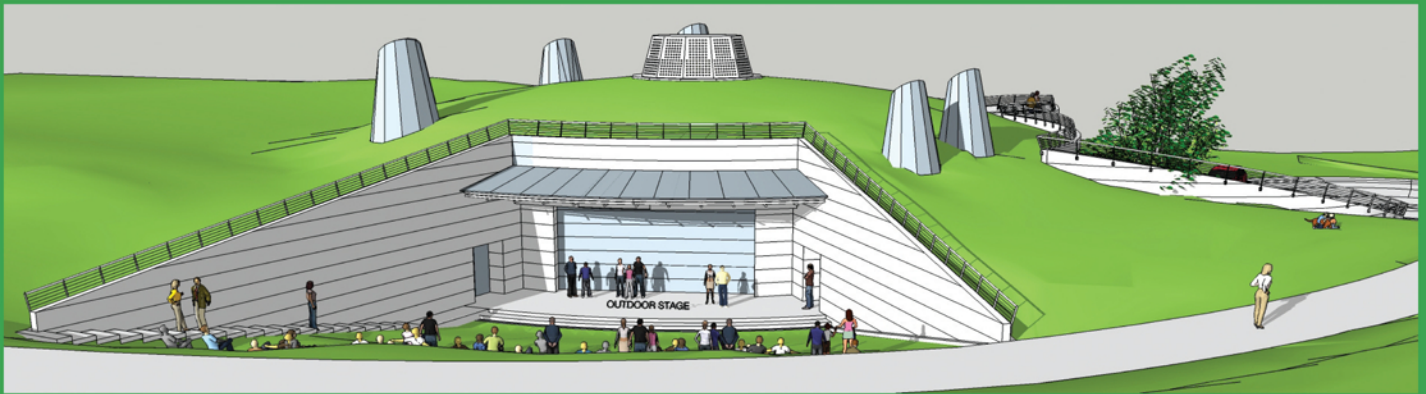
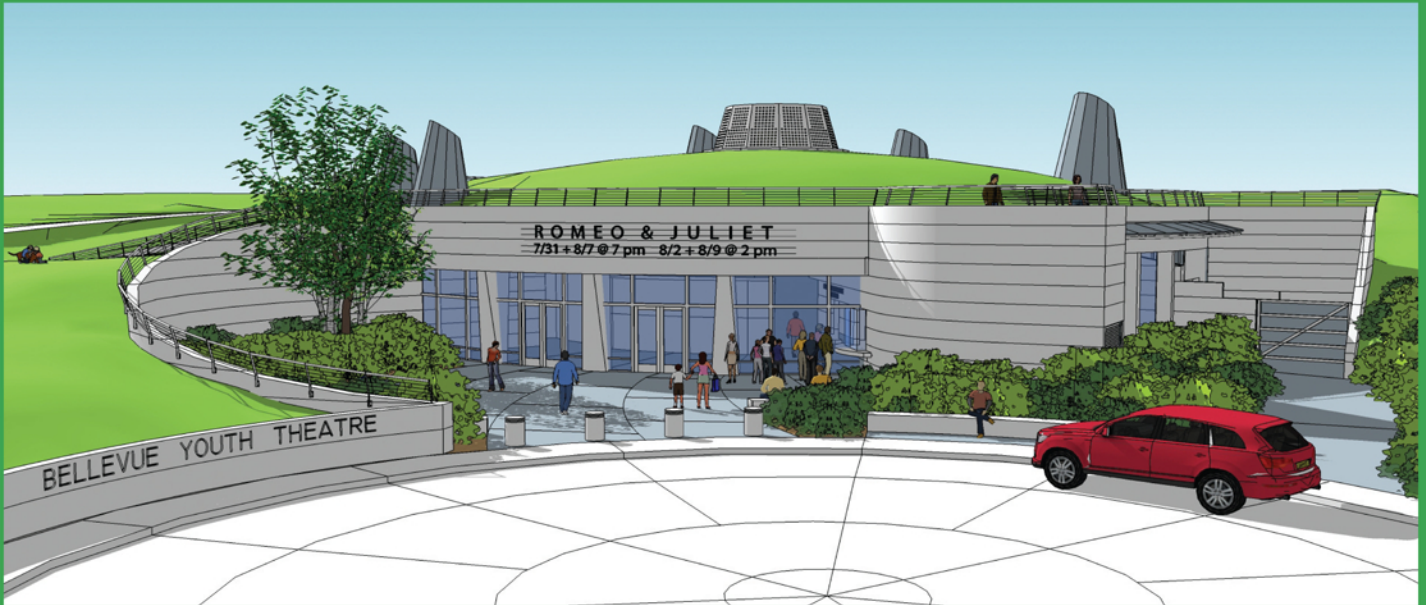
LOWER FLOOR PLAN  
1/8" = 1'-0"



**BELLEVUE YOUTH THEATRE**  
CITY OF BELLEVUE PARKS AND COMMUNITY SERVICE DEPARTMENT

BECKER ARCHITECTS





**BELLEVUE YOUTH THEATRE**  
CITY OF BELLEVUE PARKS AND COMMUNITY SERVICE DEPARTMENT

BECKER ARCHITECTS