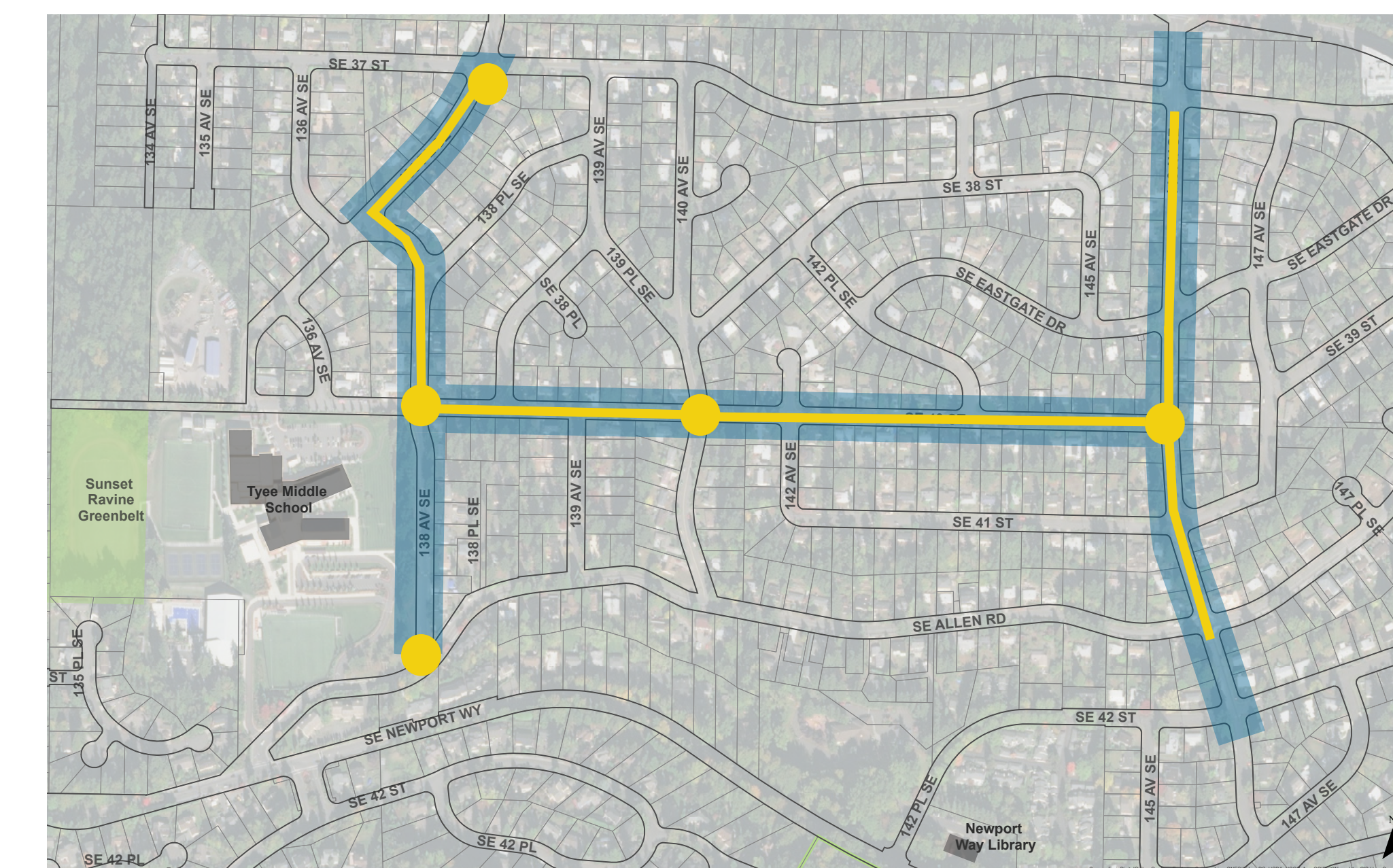
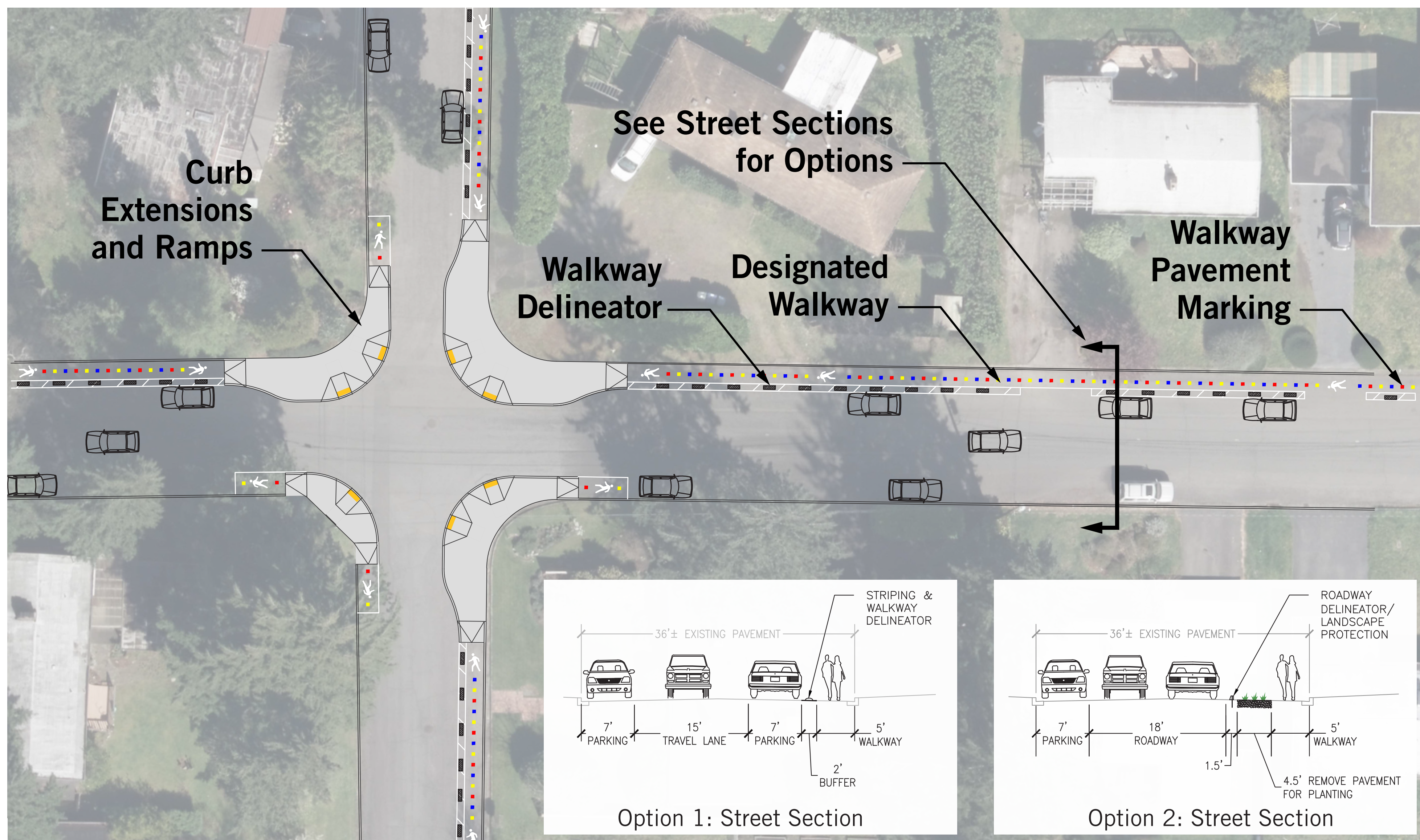


A. Designated Walkways - To improve neighborhood walkability



— Proposed Designated Walkway
— Focus Area
● Proposed Intersection Improvements



Example Designated Walkway



Example Protected Intersection

Community Concerns

- People feel vulnerable walking without sidewalks
- Wide streets and low usage of on-street parking lead to high driving speeds

Proposed Concept

- Provide designated walkways along key neighborhood streets to improve safety for people walking
- Provide curb extensions and protected pedestrian areas at key intersections:
 - Improve sight lines
 - Reduce crossing distances
 - Reinforce designated walkways
- Install temporary signage for traffic revision and parking “how to”

Design elements:

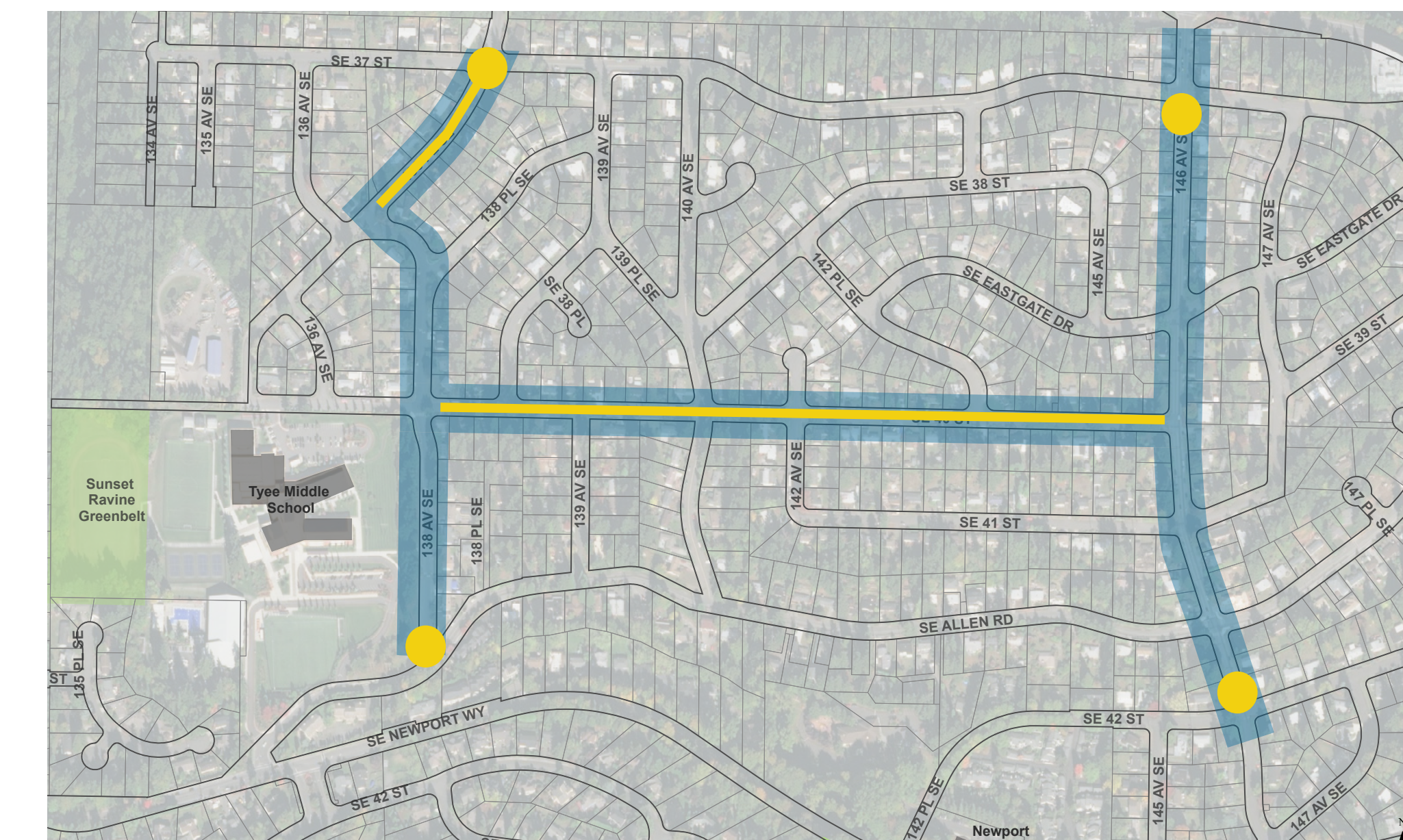
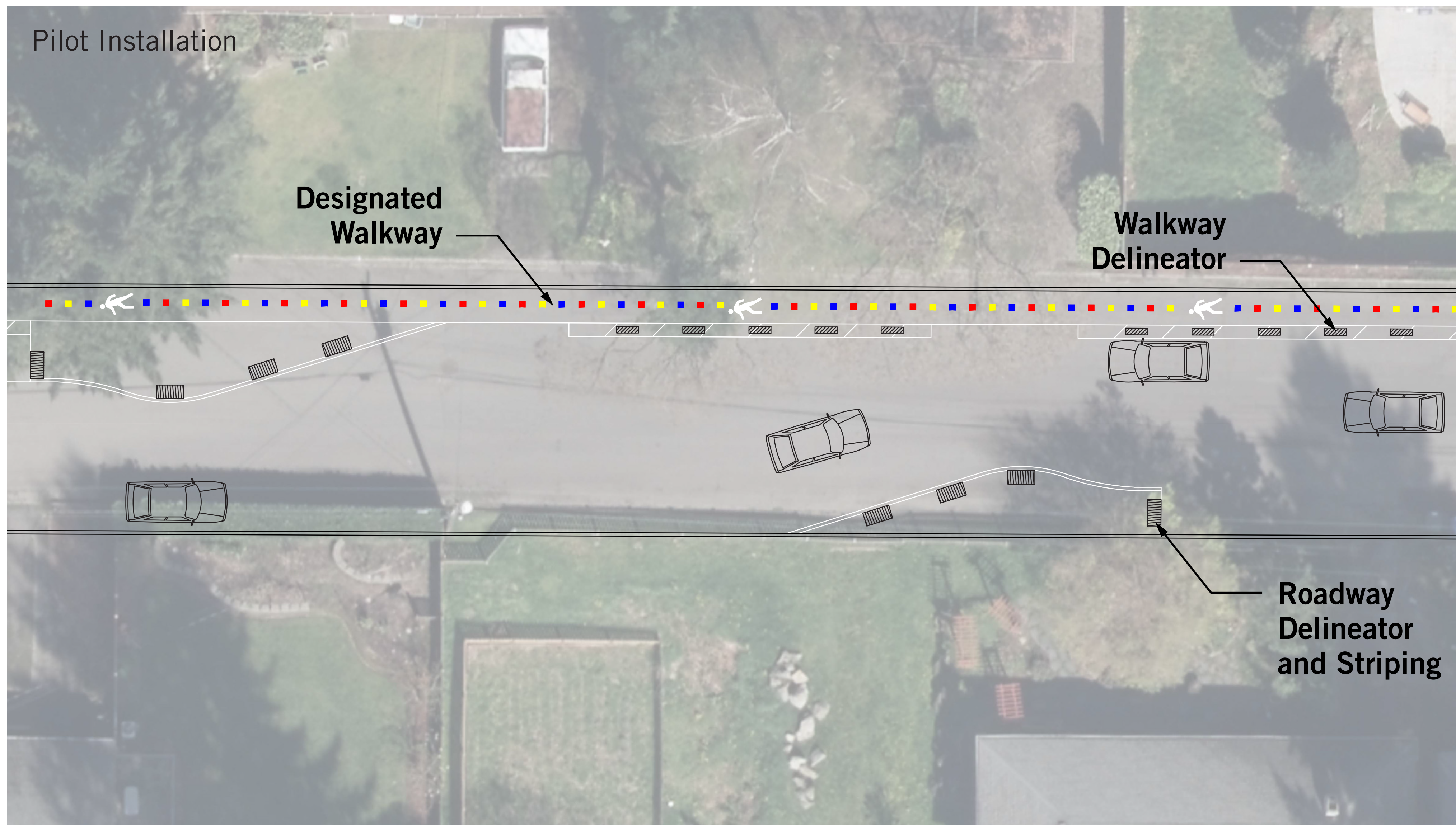
- Walkway Options:
 - Option 1: Pavement markings combined with walkway delineator along parking edge
 - Option 2: Remove parking on one side and provide new planting and roadway delineator to separate walkway.
- At key intersections:
 - Curb ramps and landings
 - Drainage adjustments as needed

Construction Cost:
Walkway Option 1
\$35,000-\$45,000

Walkway Option 2
\$85,000-\$100,000

Protected Intersection
\$95,000-\$110,000

B. Street Pinch Point - To reduce vehicle speeds



— Potential Locations for Pinch Points
● Potential Locations for Entry Medians



Entry median



Pinch Point (permanent installation)

Community Concerns

- Wide streets and low usage of on-street parking lead to high driving speeds

Proposed Concept

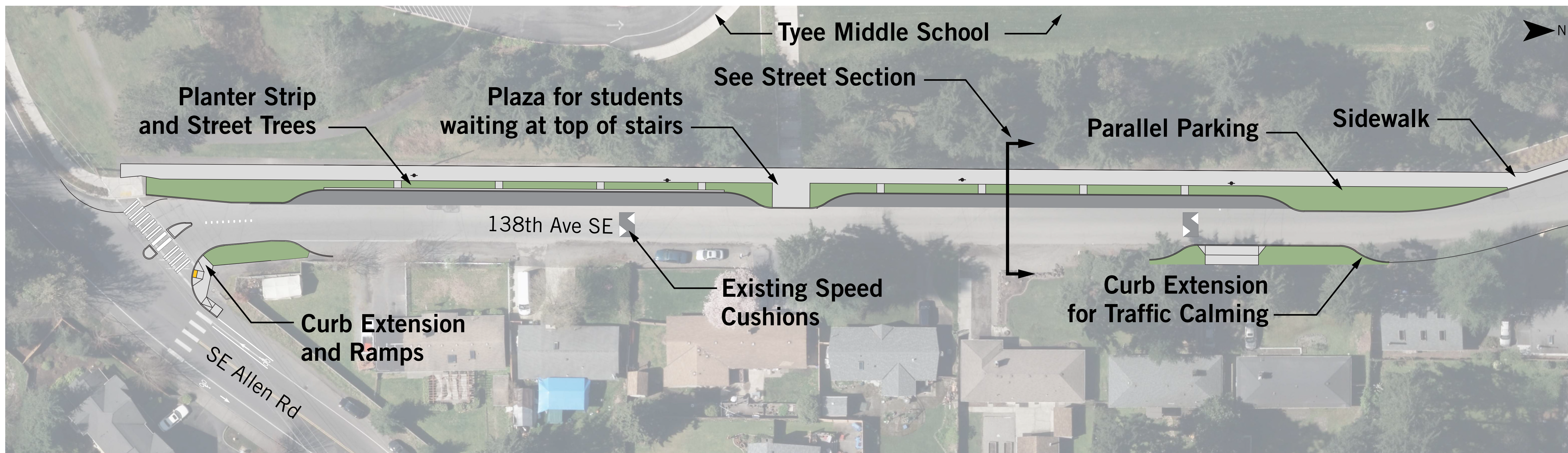
- Install pinch points to narrow roadway and slow cars at key locations (locations not yet identified);
- Install at locations with existing street lighting when possible
- Locate chicane to maintain existing driveway access and accommodate proposed designated walkway
- Remove parking on side of street with pinch point

Design Options:

- Pilot installation: Combination of striping and roadway delineators such as: flexible posts, tuff or rubber curbing, raised planters
- Permanent installation: Concrete curb, planting and street trees where feasible
- Additional site features could include: Benches, parklets, patterned pavement markings
- At Intersections: Consider medians to designate entry to neighborhood

Construction Cost:
\$20,000-\$25,000
(for each permanent installation)

C. 138th Ave SE Sidewalk - Separate sidewalk from road and formalizing parking on west side



Community Concerns

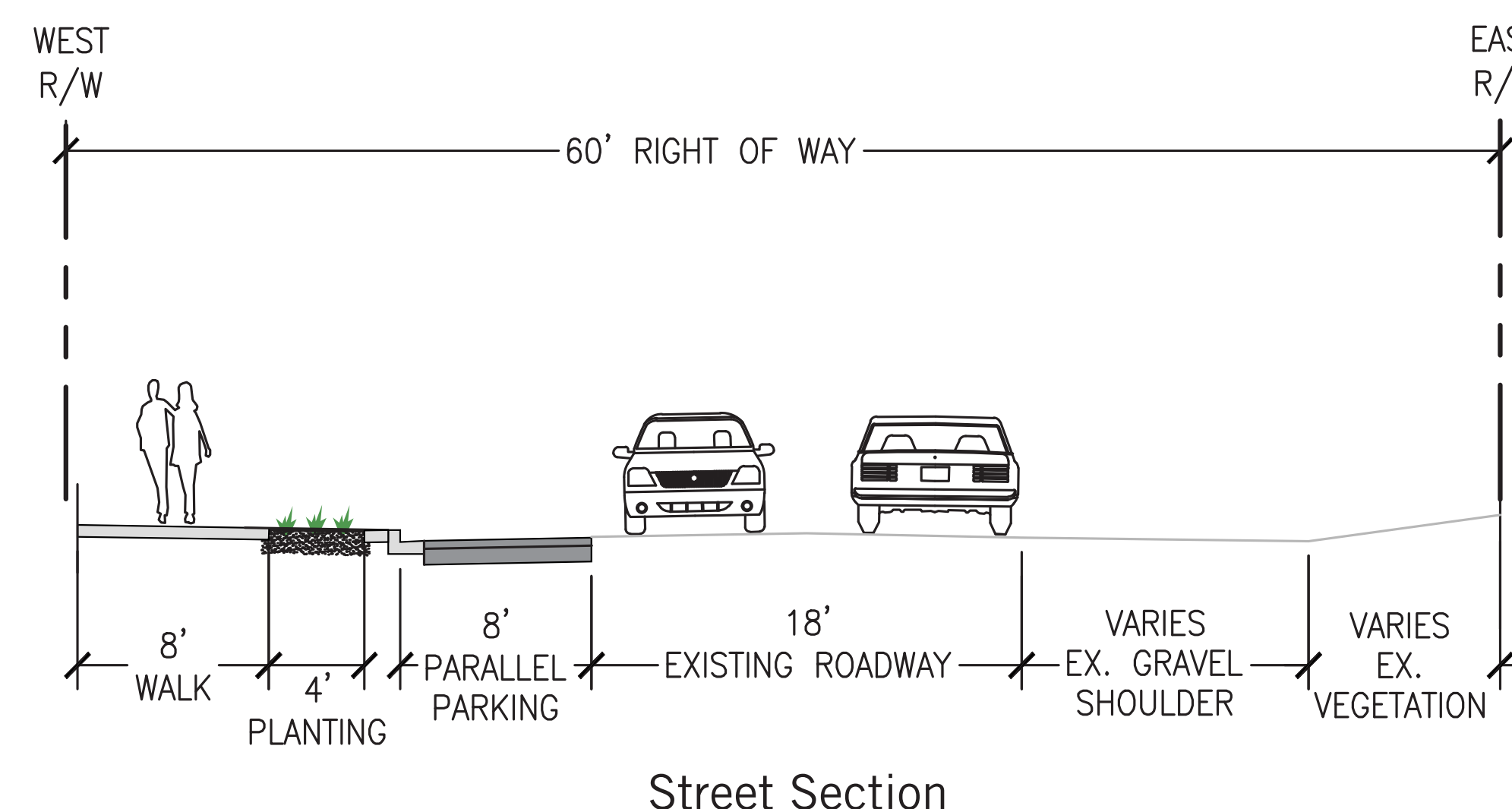
- Irregular parking patterns reduce visibility and safety during school pick-up/drop-off
- Speeding and poor driving behavior

Design elements:

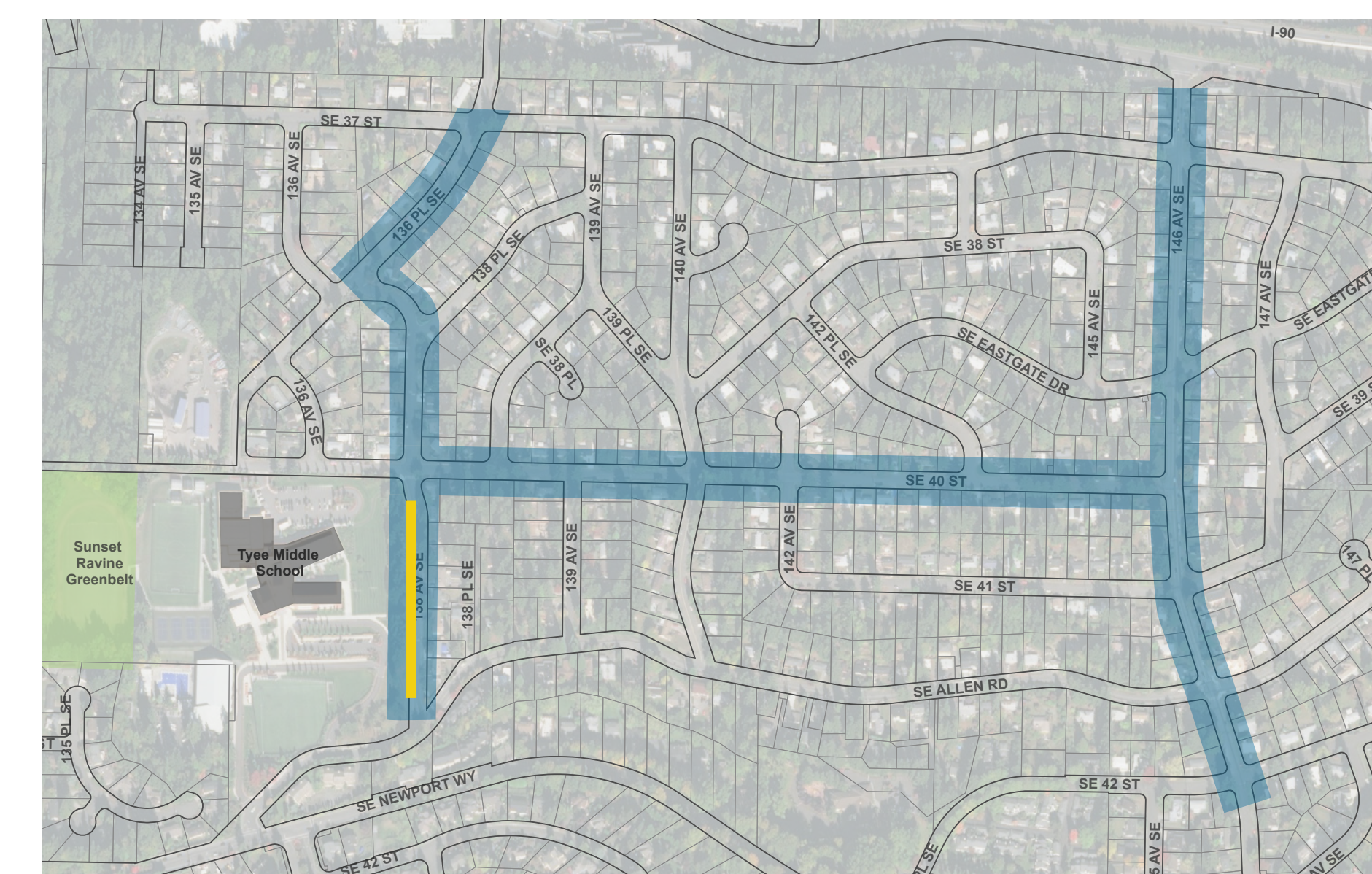
- Curb and sidewalk
- Planting and street trees
- Curb ramp and landing at Allen Rd Intersection

Proposed Concept

- New sidewalk and paved parking on west side of street
- Planting strip and street trees
- Curb extensions

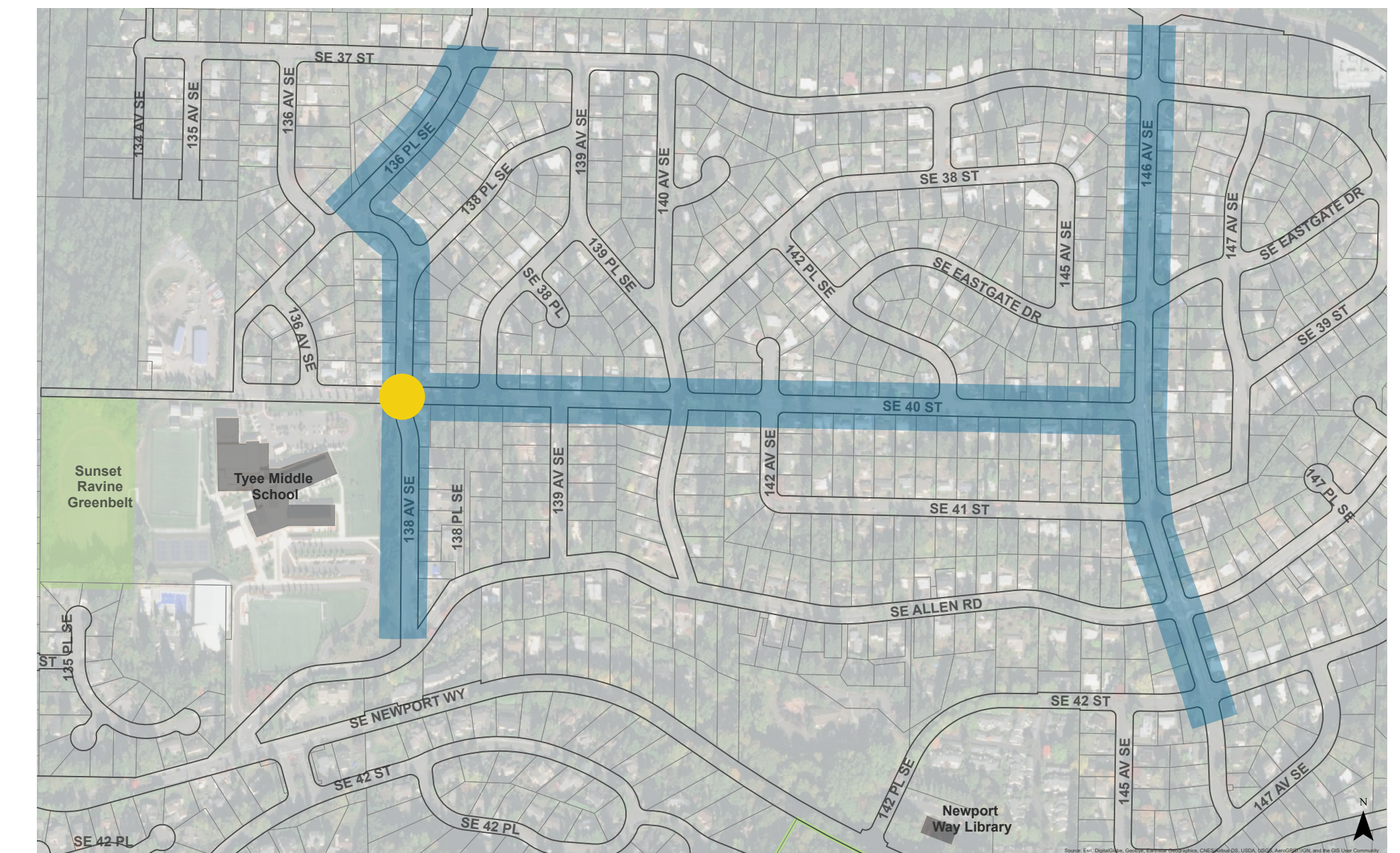


**Construction Cost:
\$430,000-\$470,000**



— Proposed Improvements
— Focus Area

D. 138th Ave SE/SE 40th St traffic circle - Formalize existing temporary traffic circle



● Proposed Intersection Improvements ■ Focus Area



Planted traffic circle

Community Concerns

- Safety for people walking through intersection
- Improve aesthetic of temporary traffic circle installation

Proposed Concept

- Provide curb extensions and protected pedestrian areas to connect to designated walkways along the street edge
- Install permanent traffic circle with vegetation maintained by City of Bellevue

Design elements:

- Curb ramps and landings
- Additional marked crosswalk
- Mountable curb traffic circle to help large vehicles through intersections
- Drainage adjustments as needed
- Street tree and other landscaping

**Construction Cost:
\$65,000-\$75,000**

E. 136th Pl/SE 38th intersection enhancements - Improve traffic safety



● Proposed Intersection Improvements ■ Focus Area



Curb extension at 161st Ave SE

Community Concerns

- Cut through traffic
- Previous improvements helped traffic safety, but room for improvement

Proposed Concept

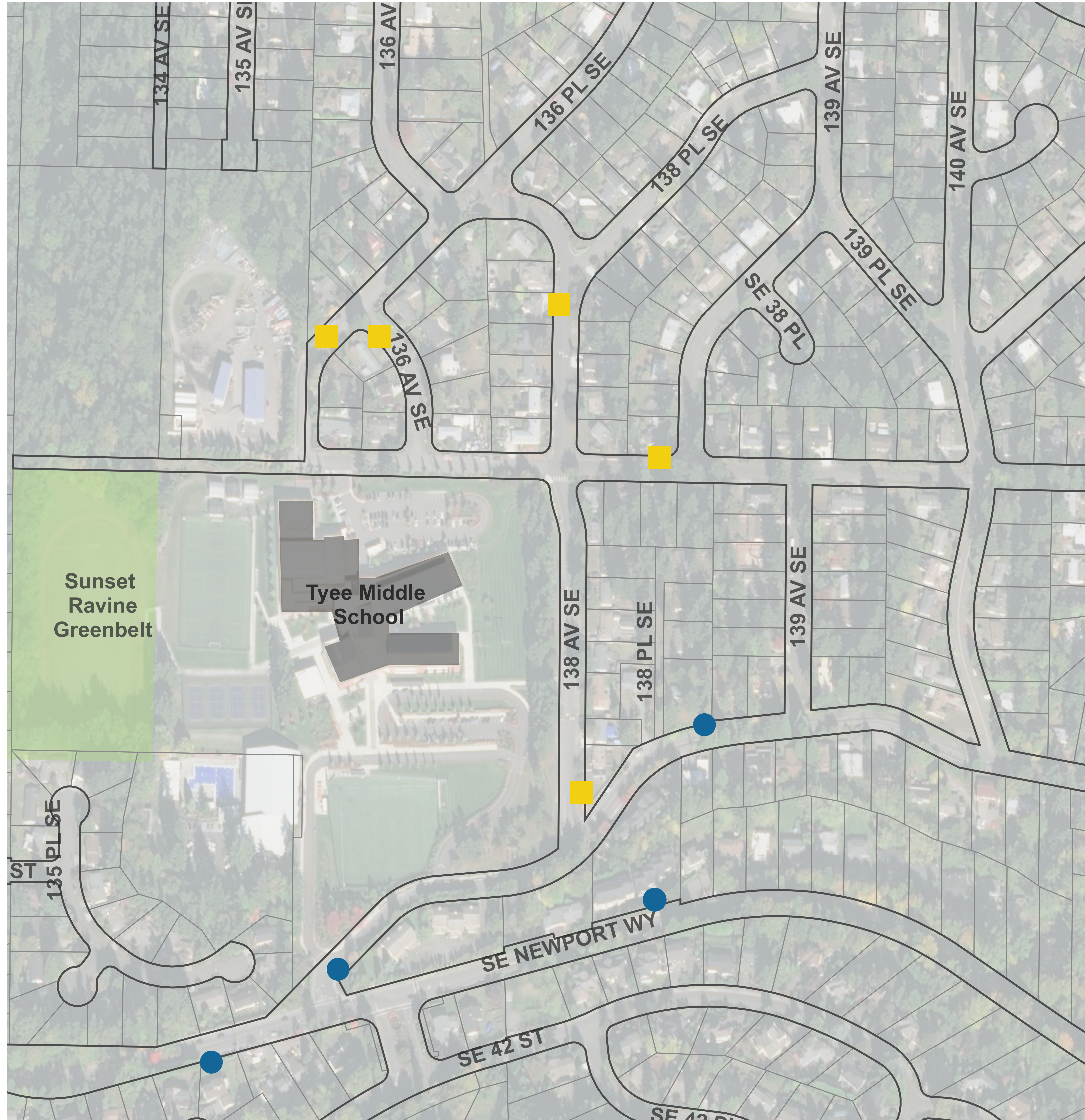
- Enhance previous city interim improvements
- Relocate speed limit sign
- Consider opportunity to:
 - Provide a designated walkway along road edge
 - Locate an additional pinch point to reduce travel speeds between SE 37th St and SE 38th St

Design elements:

- Curb extensions
- Landscaping
- Drainage adjustments as needed

**Construction Cost:
\$50,000-\$60,000**

F. Tye school zone signs - Improve safety for students walking and biking to/from Tye Middle School



● School Zone Sign with Flashing

■ School Zone Sign



School Zone Sign with Flashing Beacon



School Zone Sign

Community Concerns

- Vehicle speeds near and around school
- Unsafe street crossings for students and neighborhood residents

Design elements:

- Traffic signs
- Flashing beacons

Proposed Concept

- Install school zone signs and flashing beacons on streets approaching Tye Middle School

Construction Cost:
\$50,000-\$75,000