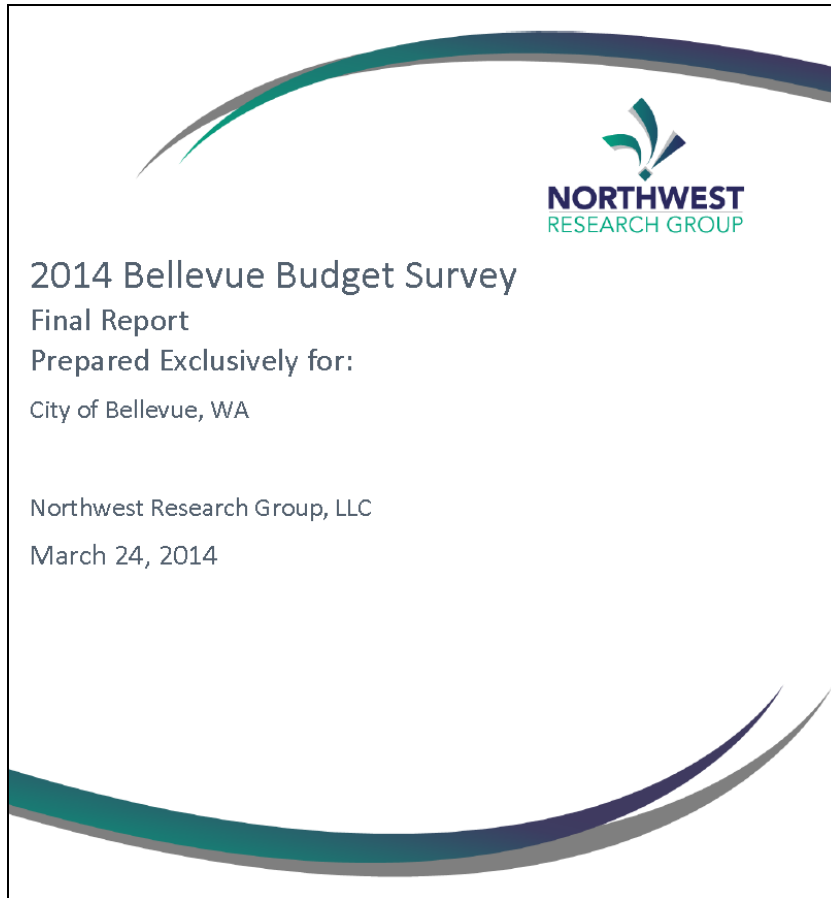
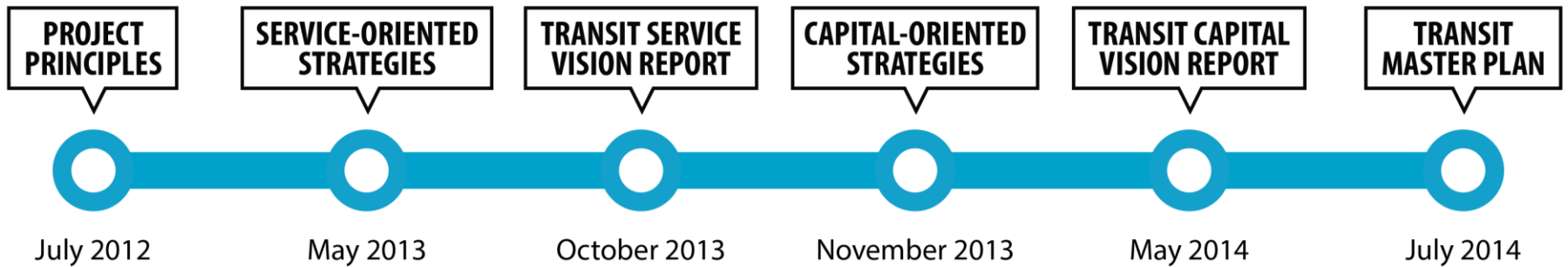




***City Council Briefing  
April 14, 2014***

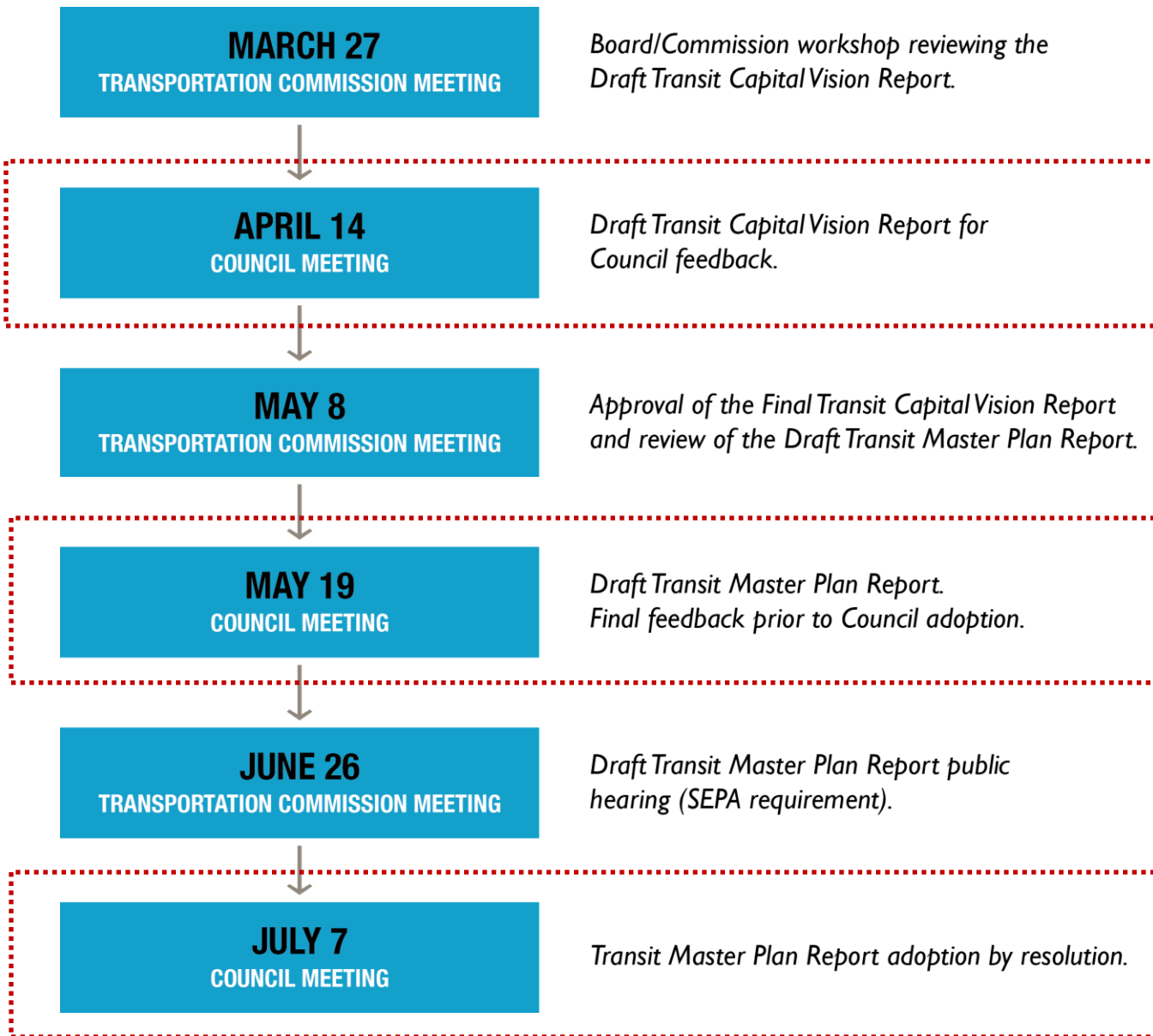


***90 percent of Bellevue residents agree or strongly agree that the City should “work with regional agencies to improve local and regional public transportation serving Bellevue.”***



- 1. Staff seeks Council feedback on the Transportation Commission's Draft Transit Capital Vision Report.**
- 2. Council input informs the Commission's work finalizing the Vision Report at its May 8 meeting.**





# Corporations, Agencies, and Institutions

# Riders, Former Riders, and Non-Riders

**Bellevue Transit Master Plan**

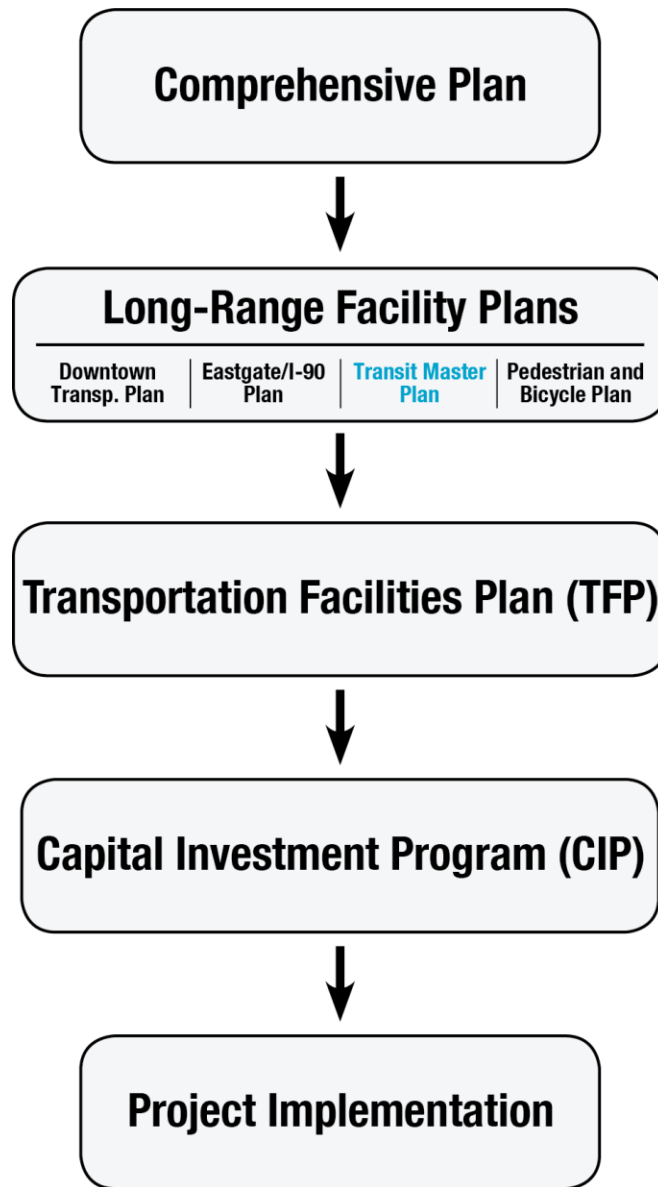
1. 您認為貝爾優的交通設施有甚麼好的地方?  
 非常喜欢这里的公车, 十分方便!  
 如月票, 古城, 看病等之。

2. 您認為貝爾優的交通設施有甚麼不好的地方?  
 希望 Rapid Ride 公车线的在  
 此若中心增加一个行车站(向  
 从 Redmond 到 Bellevue 的)

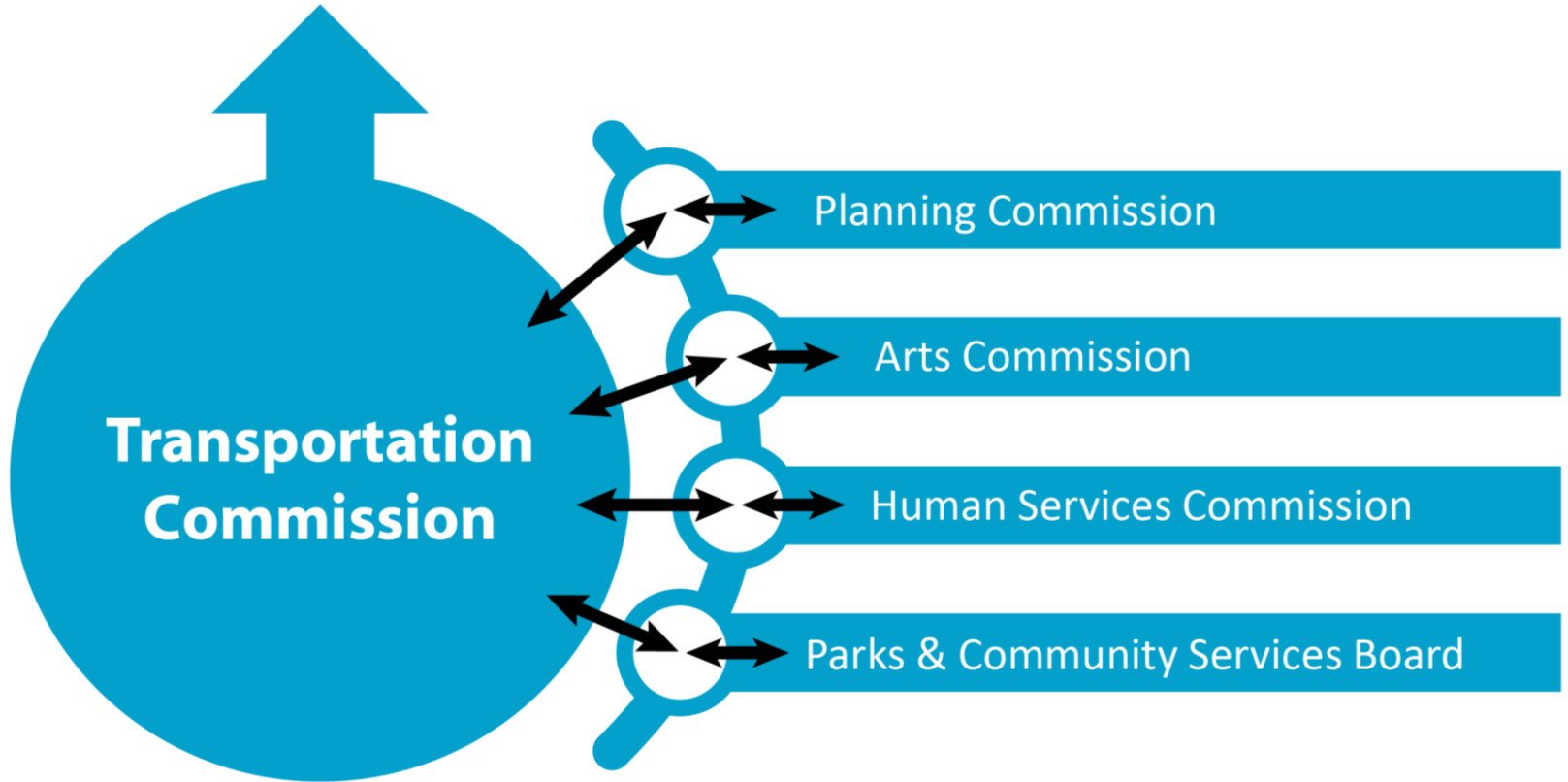
mar15/09A-372.indd

# City of Bellevue Boards and Commissions



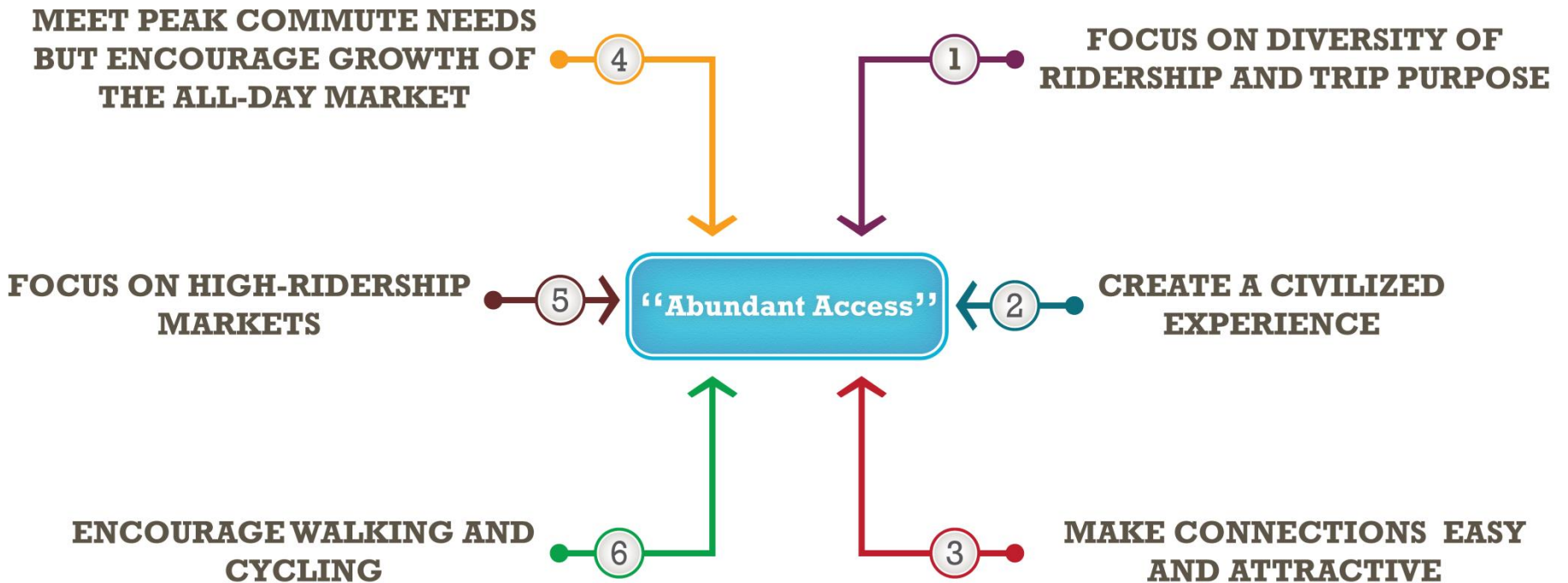


# Bellevue City Council



○ Members of the Planning, Arts, and Human Services Commissions and the Parks and Community Services Board are invited to all staff briefings on the TMP to the Transportation Commission.



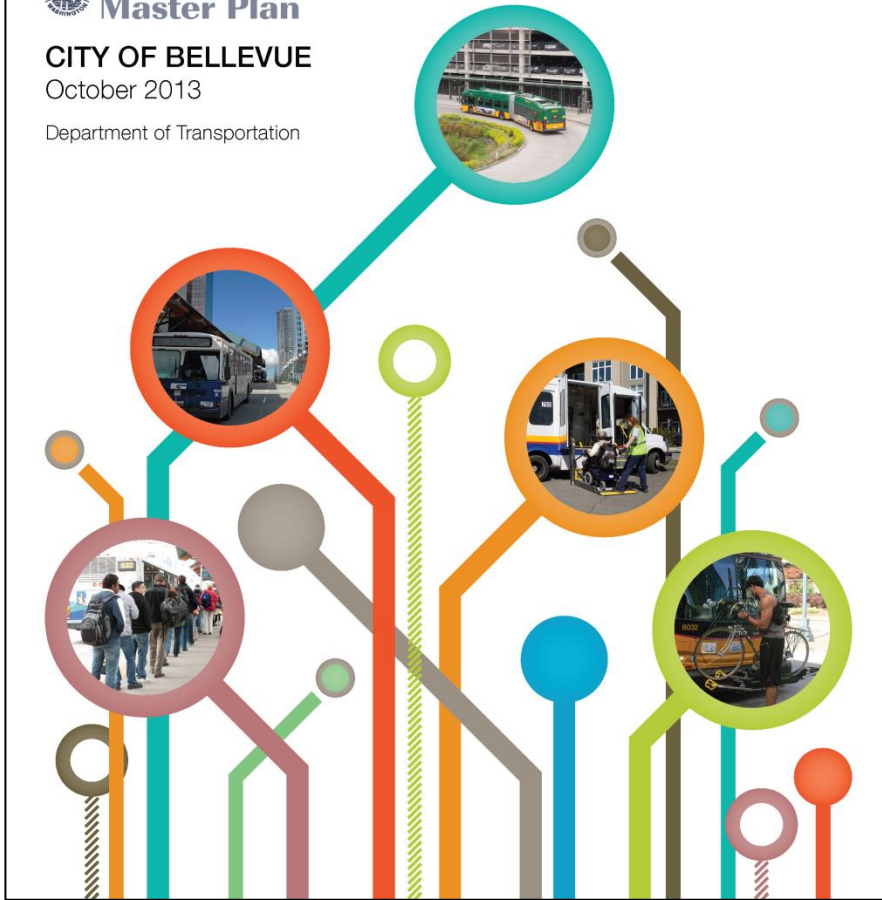




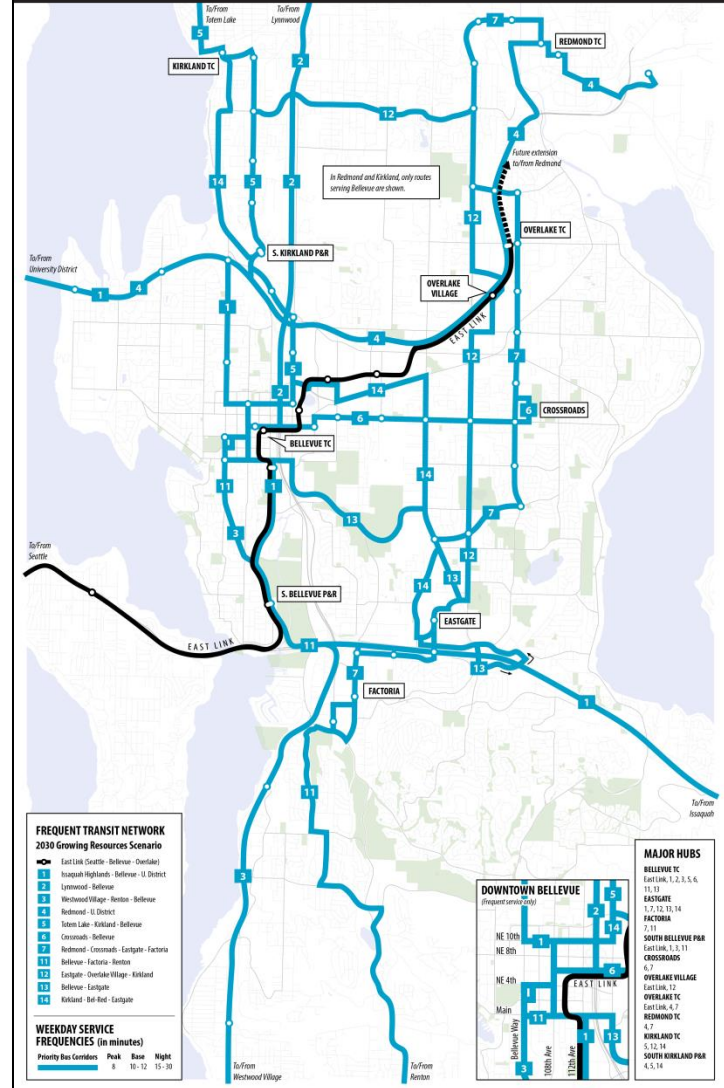
# TRANSIT SERVICE VISION REPORT



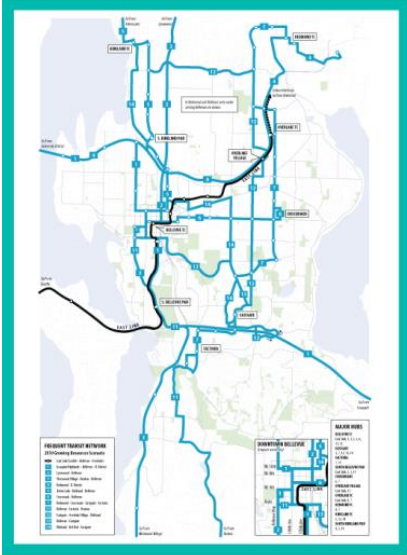
**CITY OF BELLEVUE**  
 October 2013  
 Department of Transportation



## 2030 FREQUENT TRANSIT NETWORK

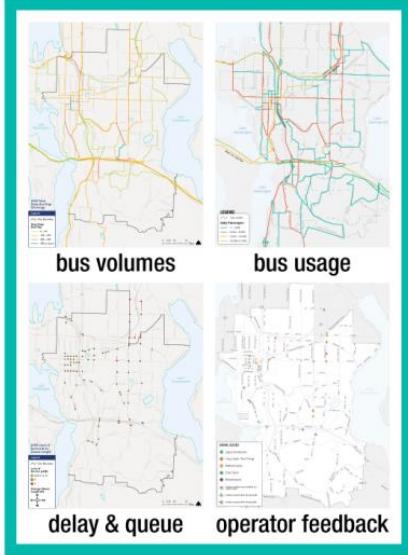


## FREQUENT TRANSIT NETWORK (FTN)



Where is bus service expected to be convenient, reliable, easy-to-use?

## CURRENT and FUTURE CONDITIONS



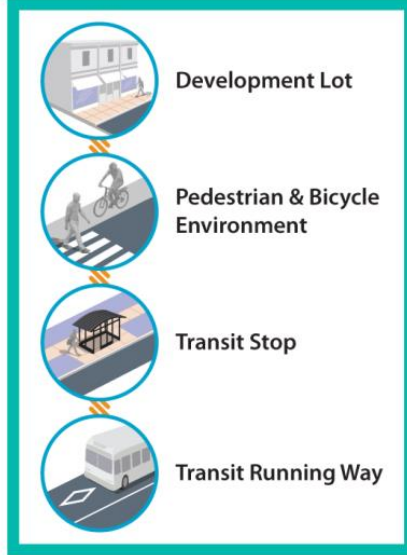
What are the current and future conditions on FTN corridors?

## EVALUATION of COSTS and BENEFITS



What are the costs and benefits of different levels of operational exclusivity?

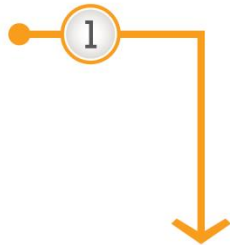
## CAPITAL-ORIENTED STRATEGIES



What strategies can influence the public's decision to use transit?



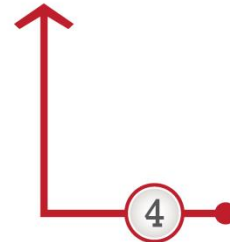
**USE URBAN DESIGN AND DEVELOPMENT REGULATIONS TO SUPPORT TRANSIT USE**



**DESIGN TRANSIT FACILITIES TO ENHANCE ACCESSIBILITY, CONNECTIVITY AND USER EXPERIENCE**

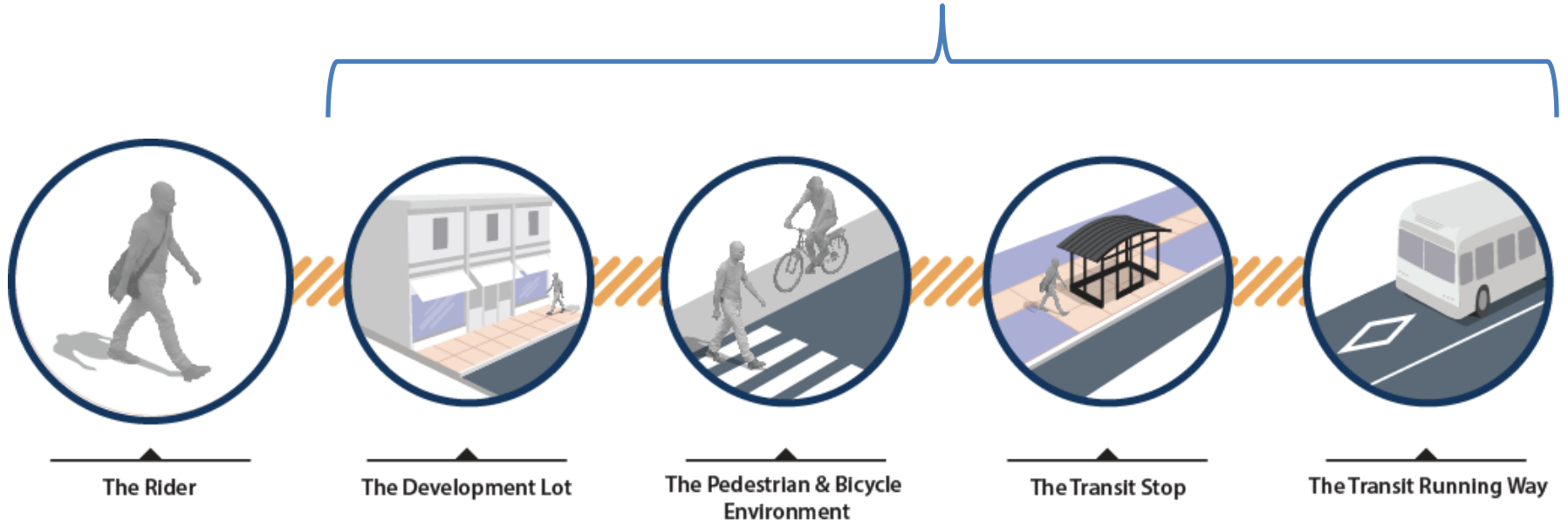
**“Abundant Access”**

**INVEST IN TRANSIT PRIORITY MEASURES**

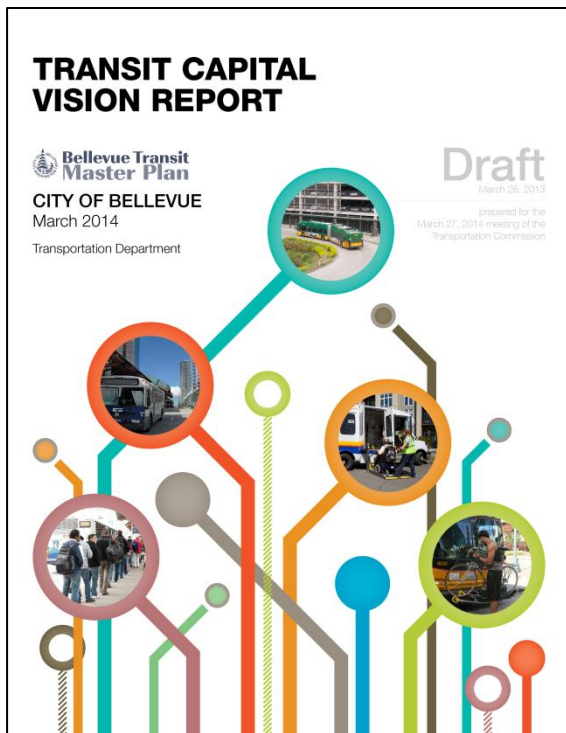


**EMPLOY INNOVATION AND COMMUNITY COLLABORATION WHEN IMPLEMENTING TRANSIT PRIORITY MEASURES**

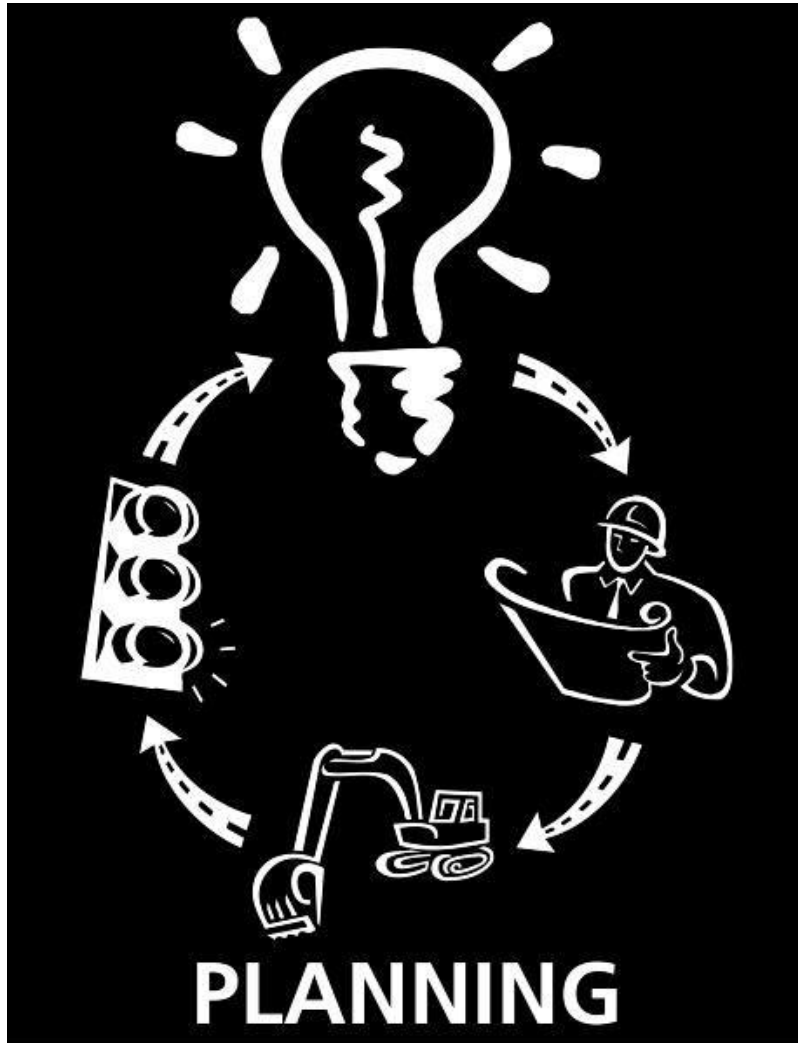
# City of Bellevue's Influence



Considers the various types of infrastructure that support productive, accessible, efficient transit services in Bellevue and recommends investments that would help the City realize its proposed 2030 Frequent Transit Network.

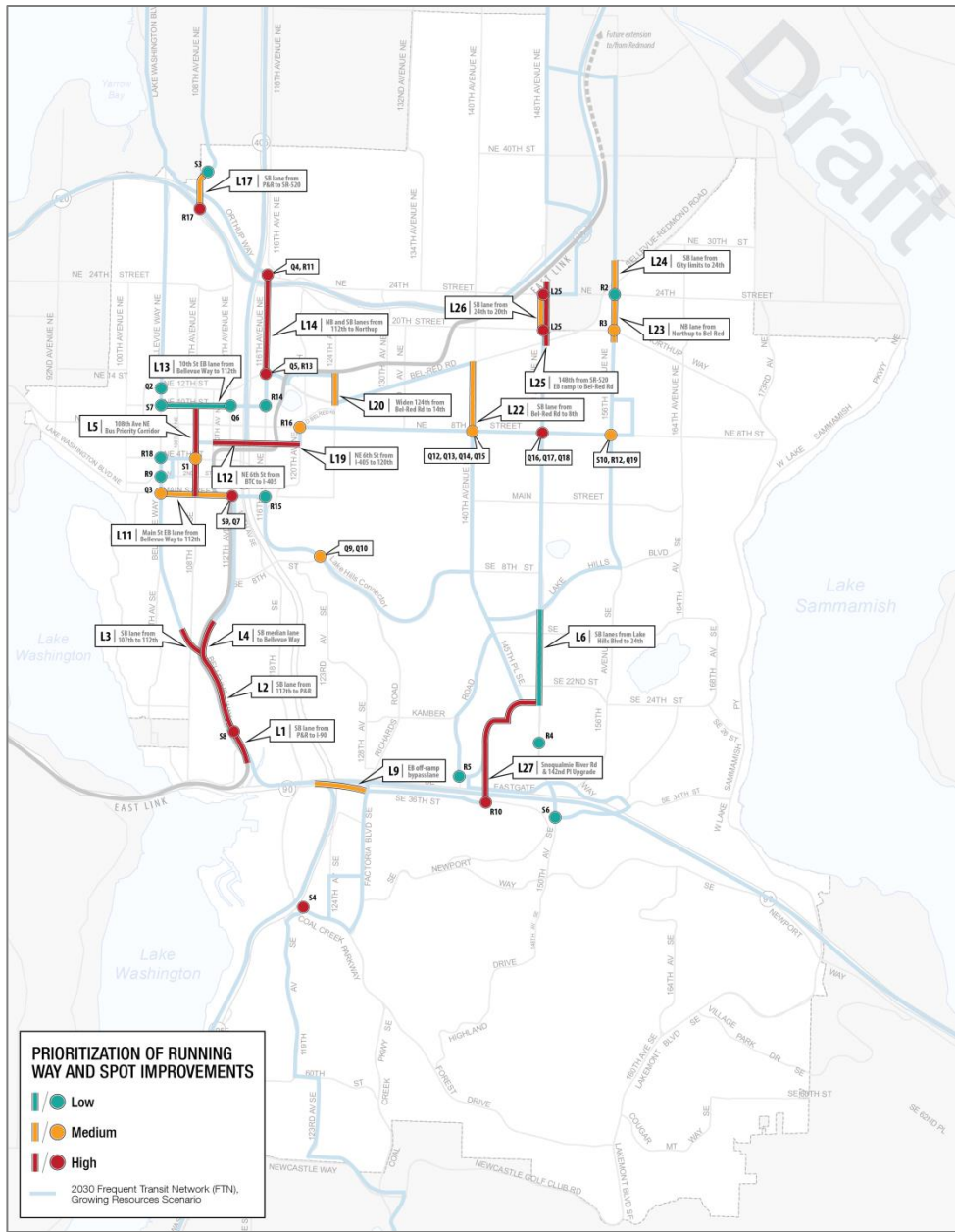


- Arterial HOV lanes
- Business Access Transit (BAT) lanes
- Queue jump
- Road construction
- Transit Signal Priority (TSP)
- Commuter parking facilities
- Shelters
- Layover facilities
- Pedestrian infrastructure
- Bicycle infrastructure



**These projects are conceptual and the final details of design will be developed as the projects proceed further along in the implementation process.**





All of the projects have been ranked as high, medium, or low priority depending on the value they bring to improving transit speed and reliability on FTN corridors.

Preliminary Prioritization	Total Projects	Project Type	
		Running Way	Spot Improvement
High	20	10	10
Medium	21	8	13
Low	19	2	17
Total	60	20	40

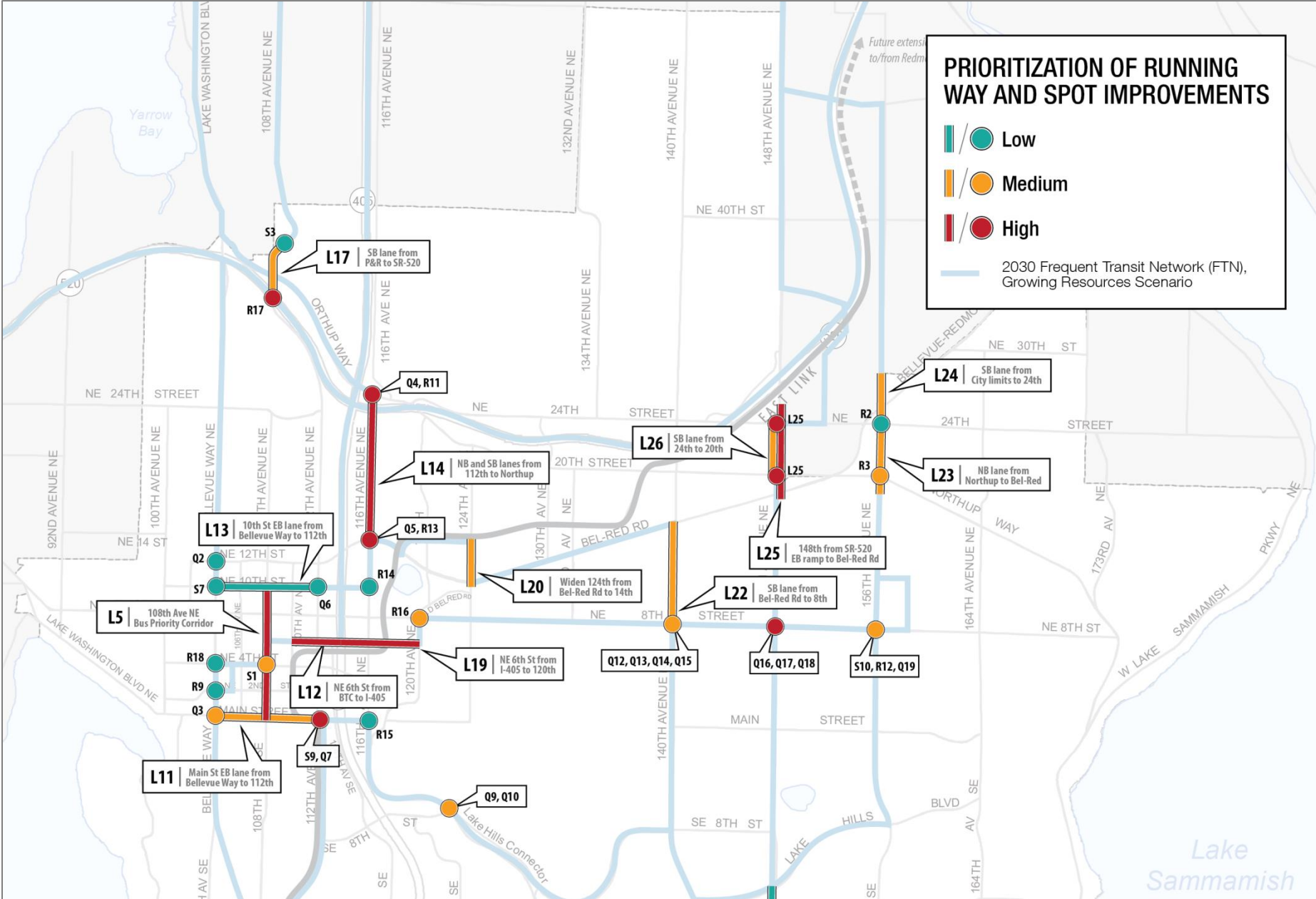
### Prioritization Factors:

1. weekday transit ridership
2. weekday bus volumes
3. PM peak approach delay
4. PM peak approach queue length
5. intersection level-of-service

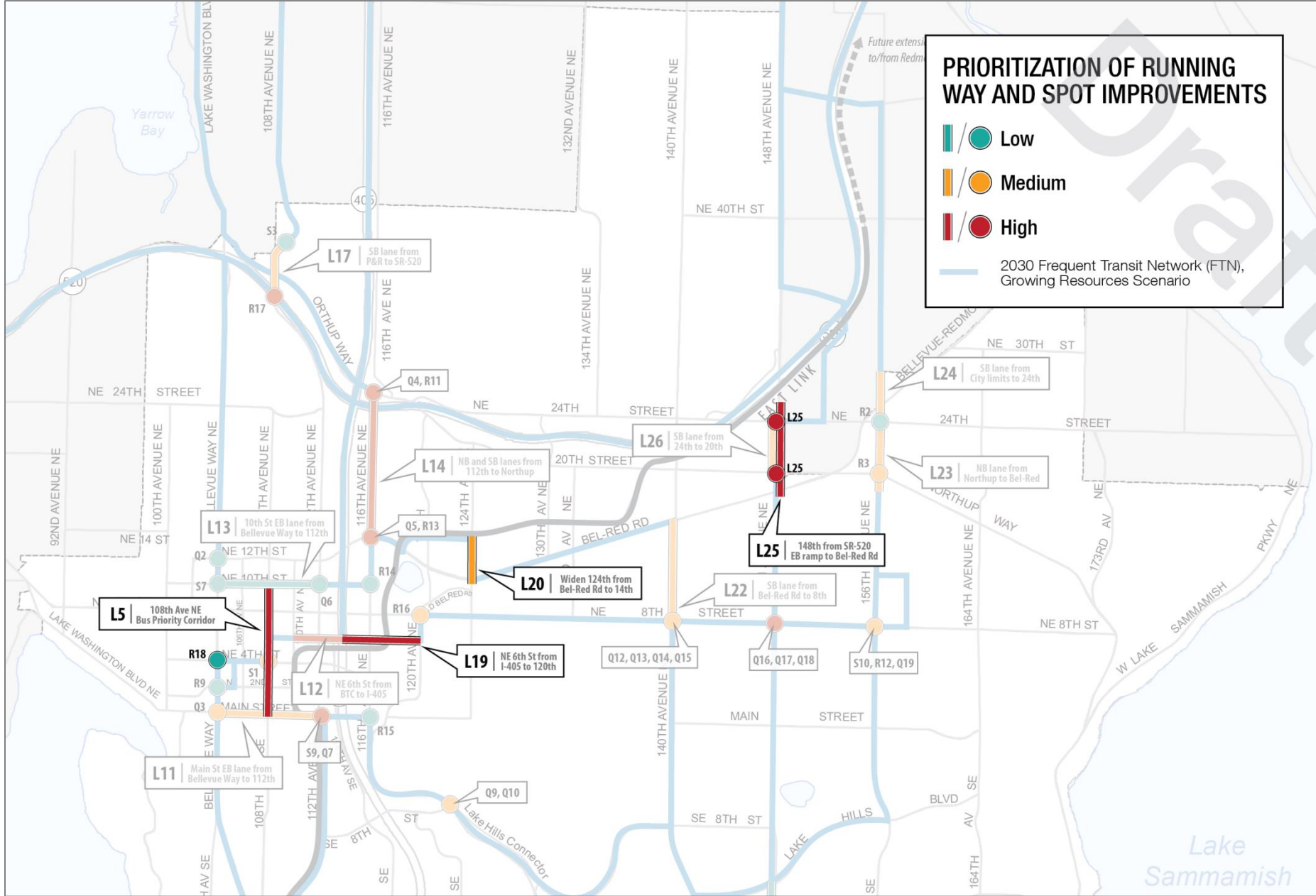


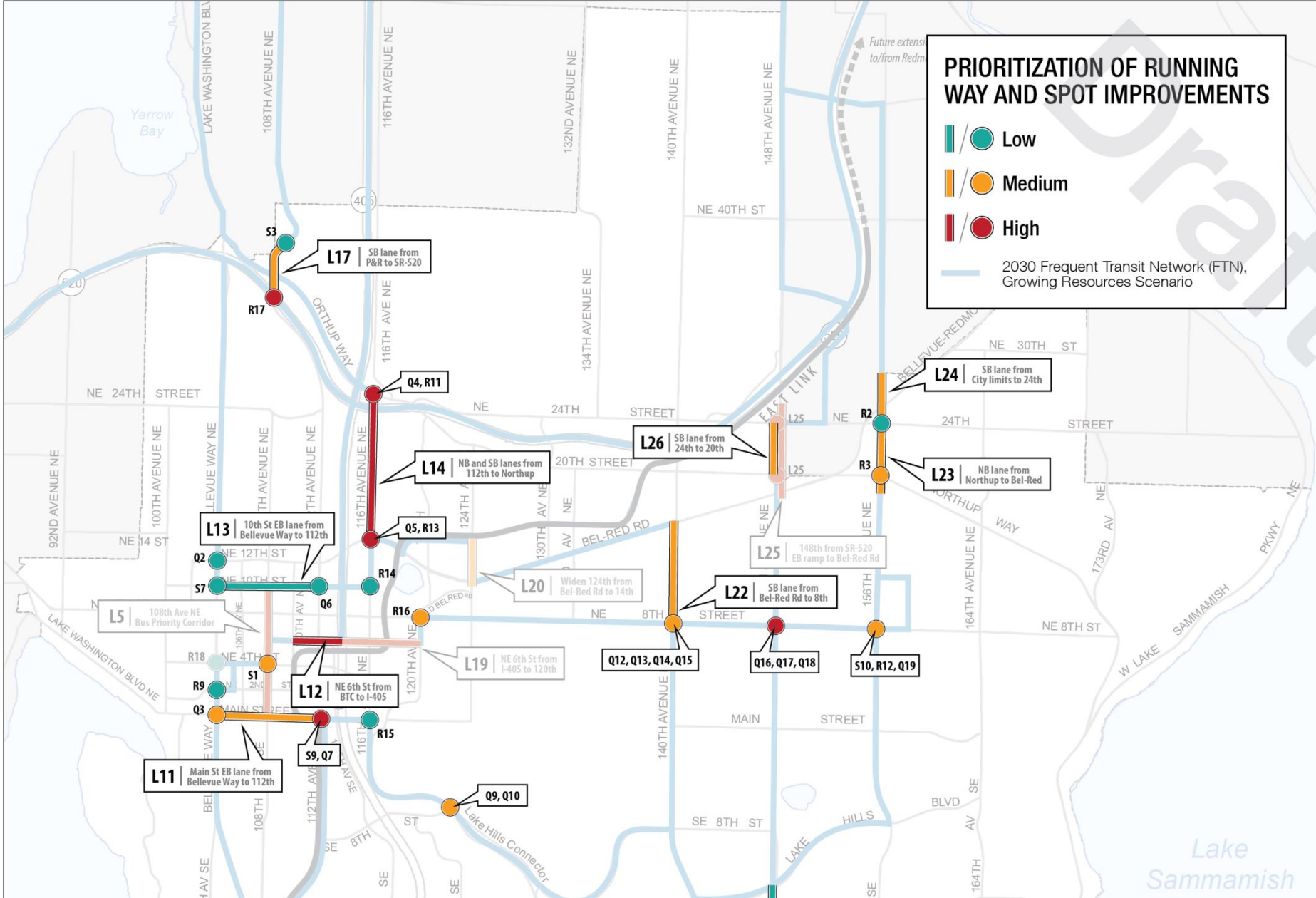
### PRIORITIZATION OF RUNNING WAY AND SPOT IMPROVEMENTS

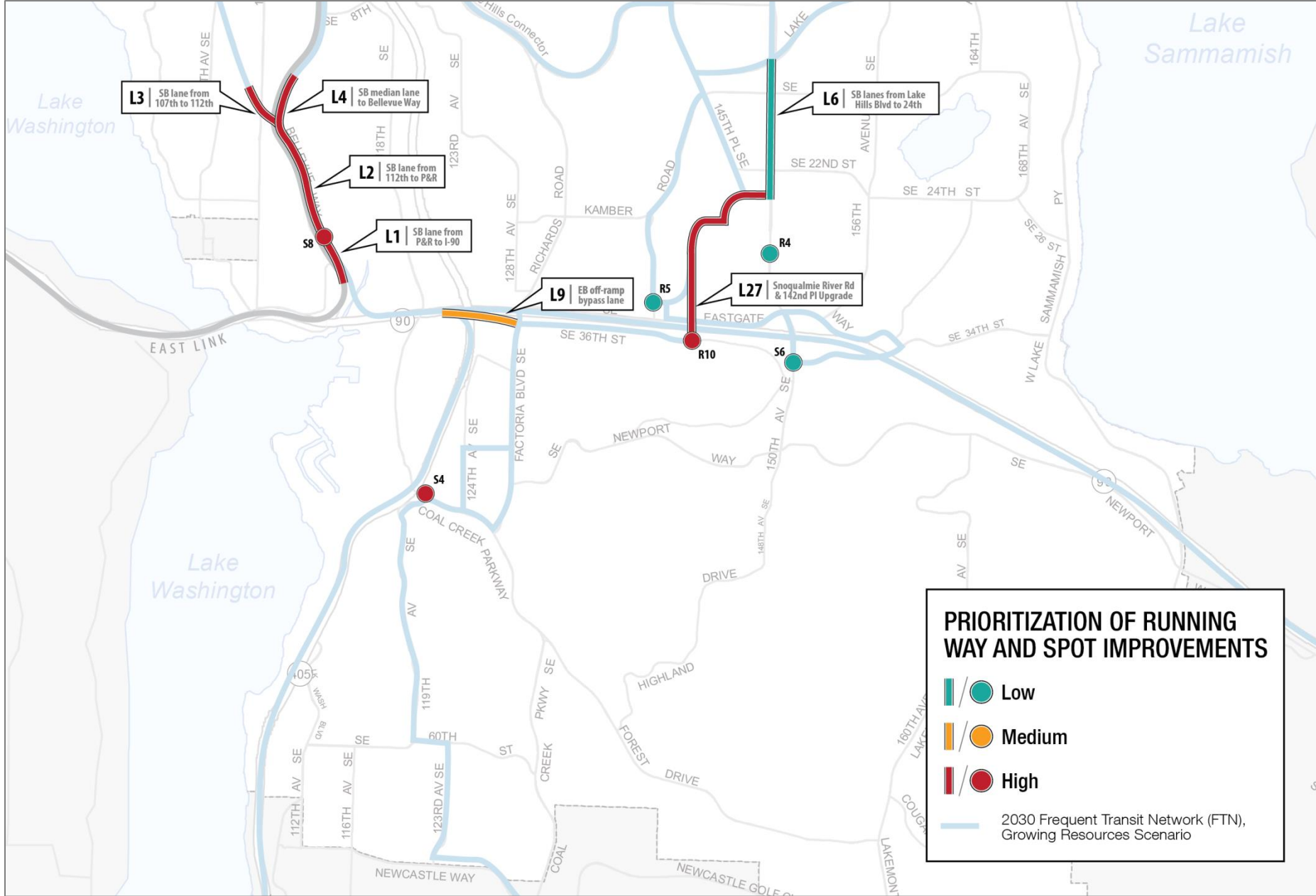
- Low (Green bar/circle)
- Medium (Yellow bar/circle)
- High (Red bar/circle)
- 2030 Frequent Transit Network (FTN), Growing Resources Scenario (Blue line)

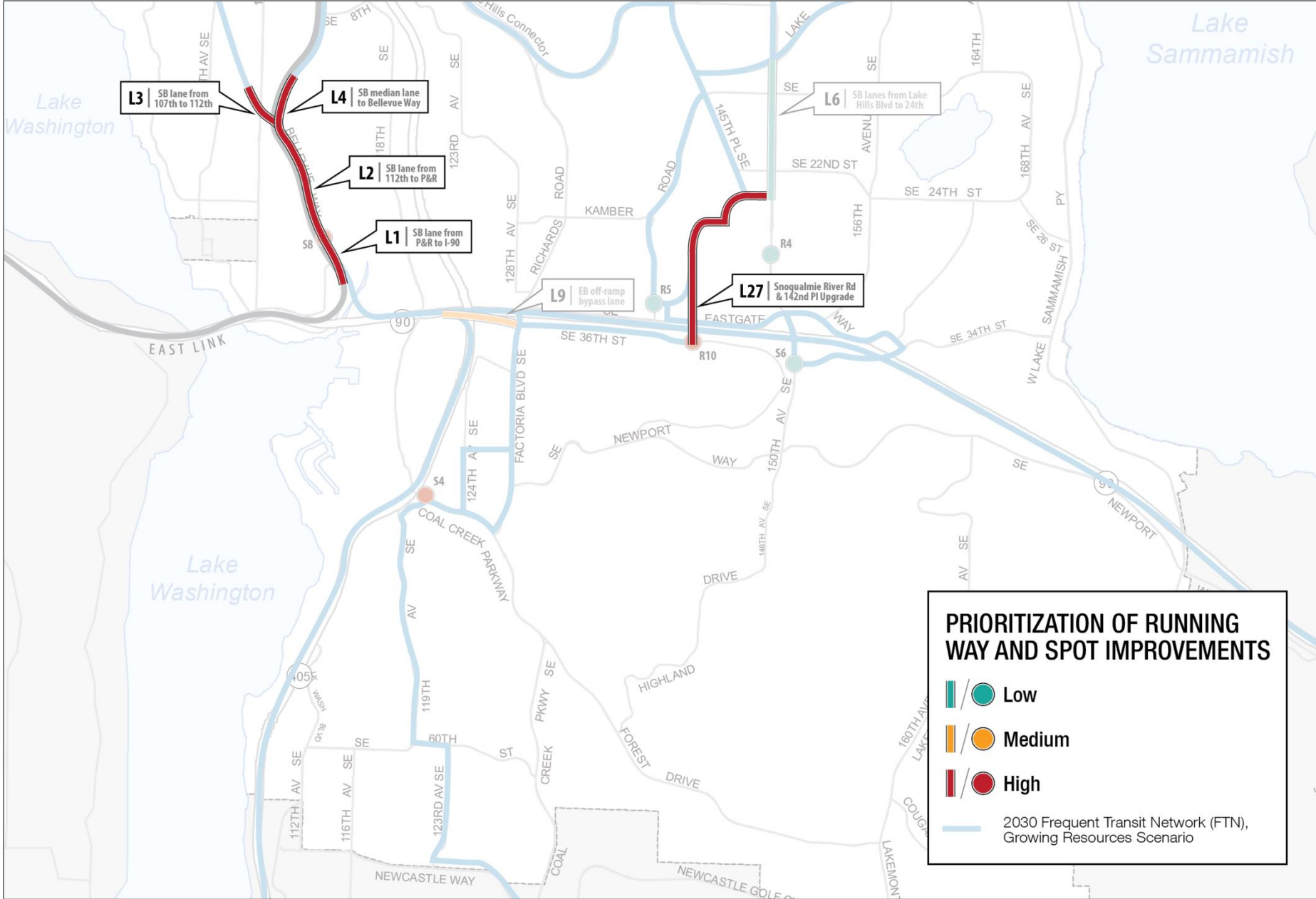




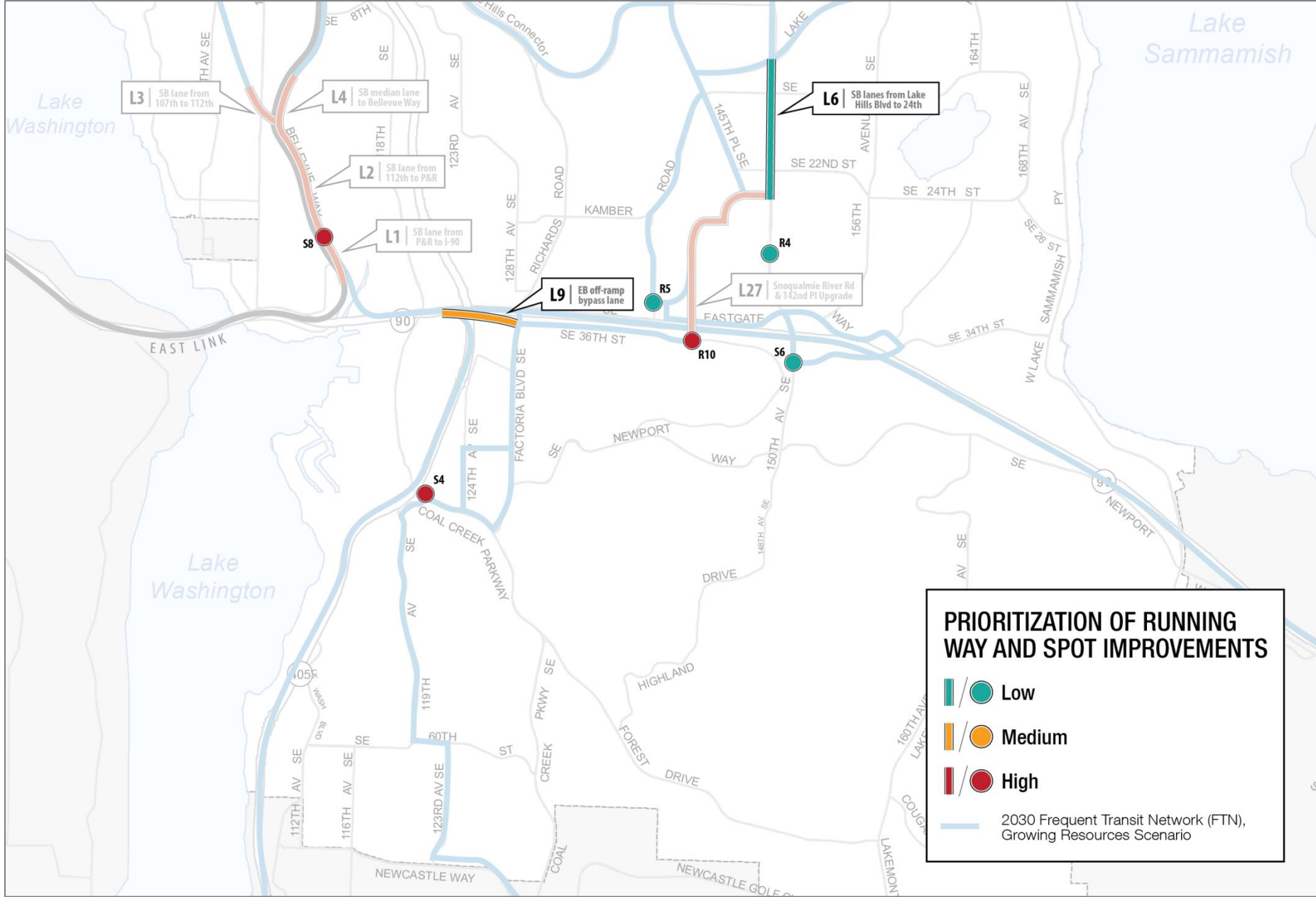


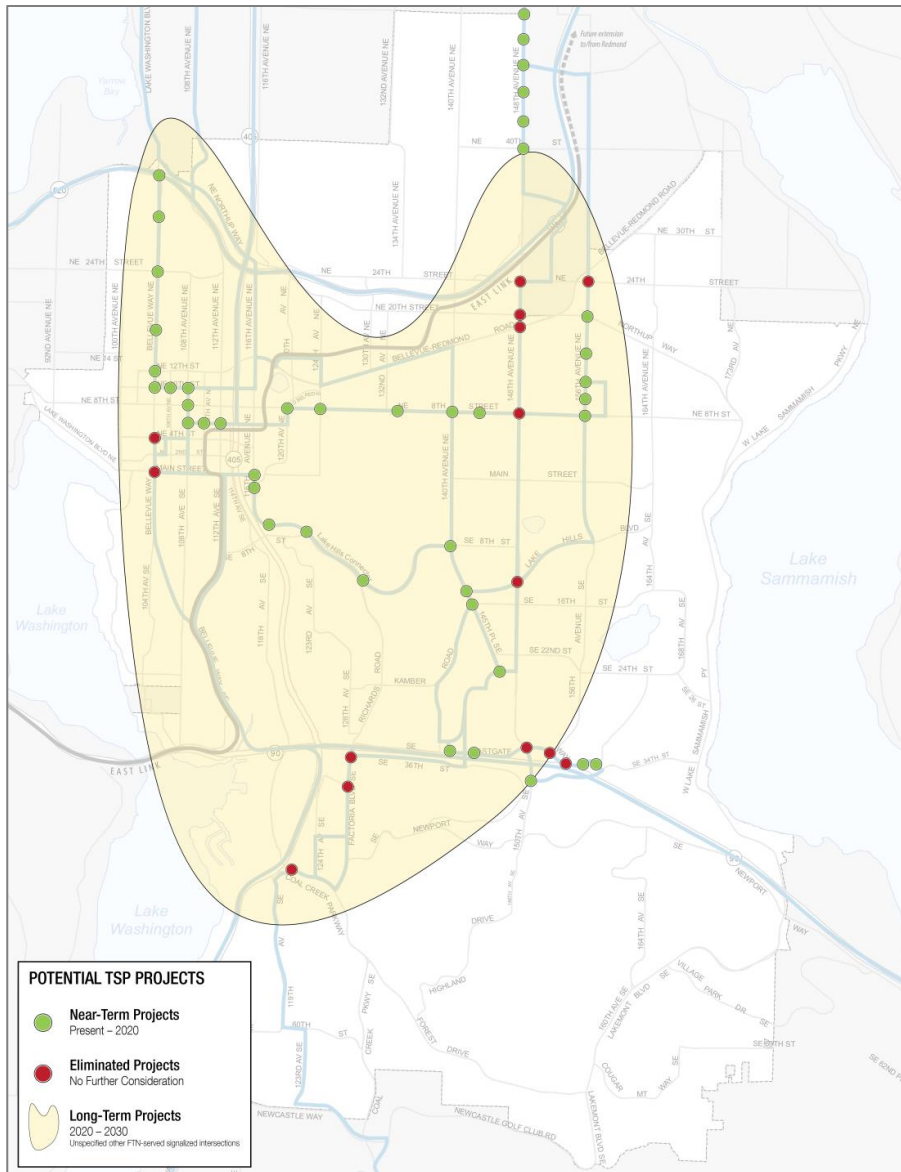












- **Near-Term Projects (Present – 2020):** Signalized intersections served by Route 271 and the RapidRide B Line that have not been eliminated by early feasibility screening.
- **Eliminated Projects:** Intersections eliminated from further consideration based on known signal and/or roadway limitations.
- **Long-Term Projects (2020 – 2030):** Unspecified number of remaining signalized intersections served by 2030 FTN routes.









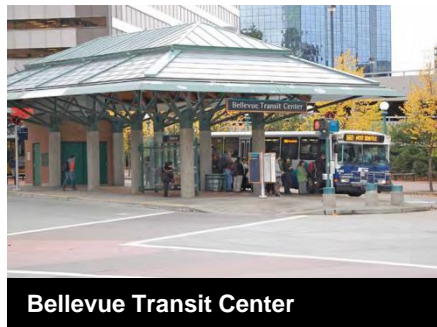
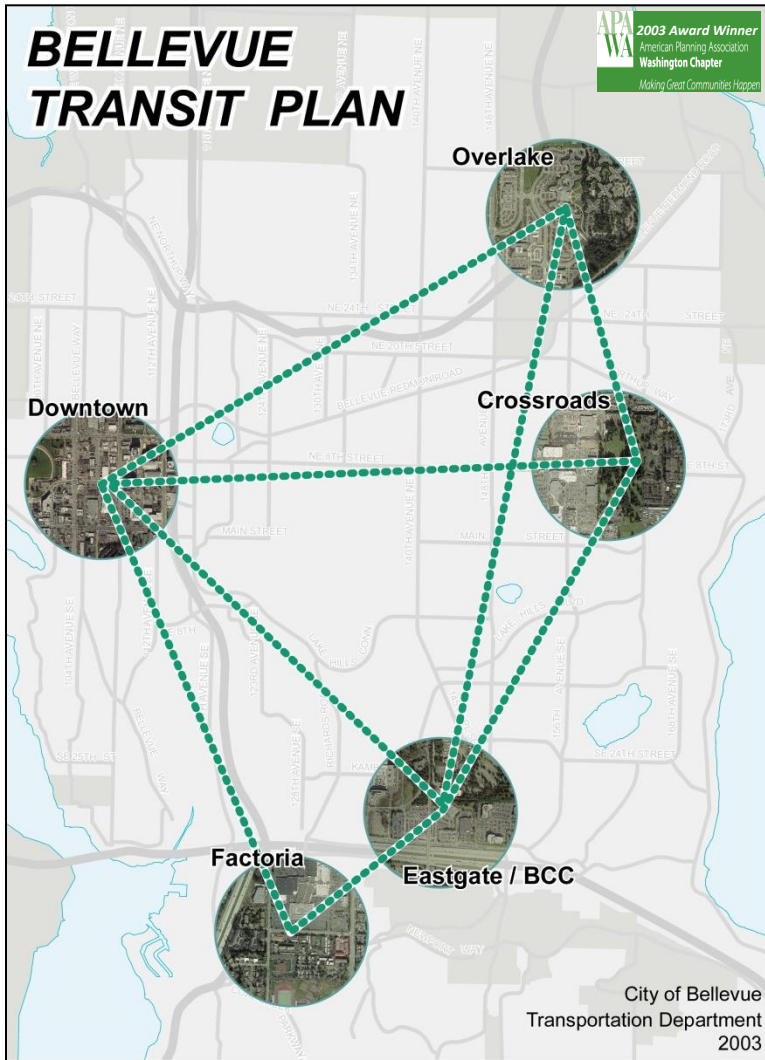


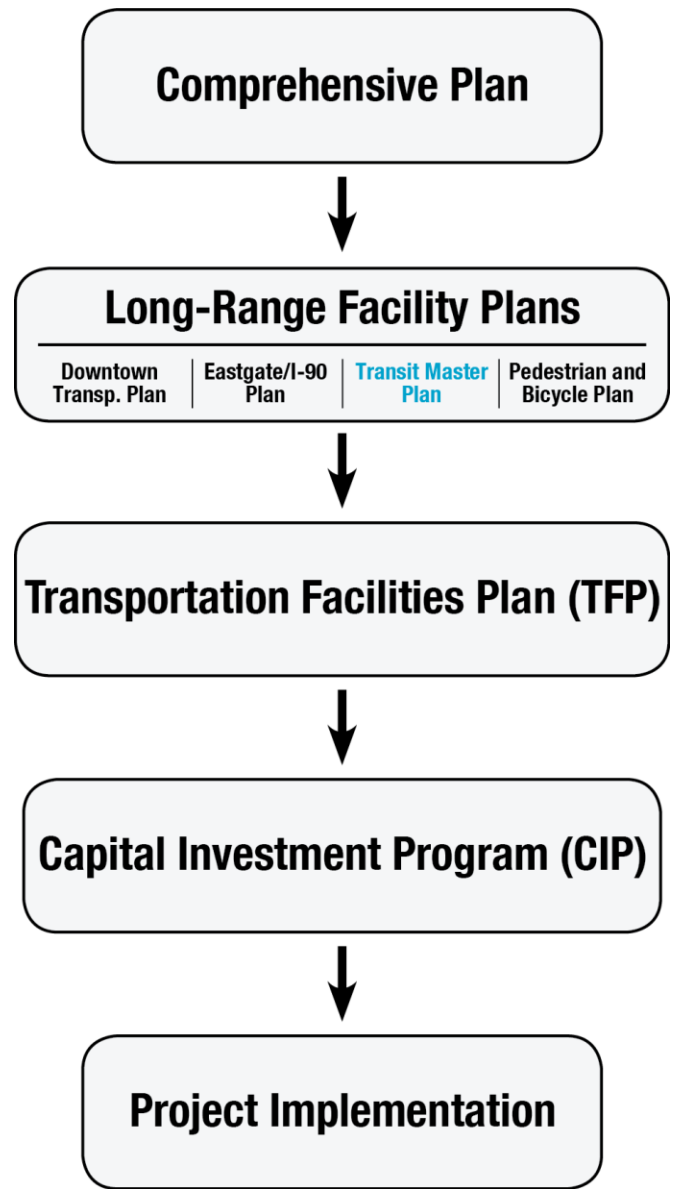
Grace Lutheran Church

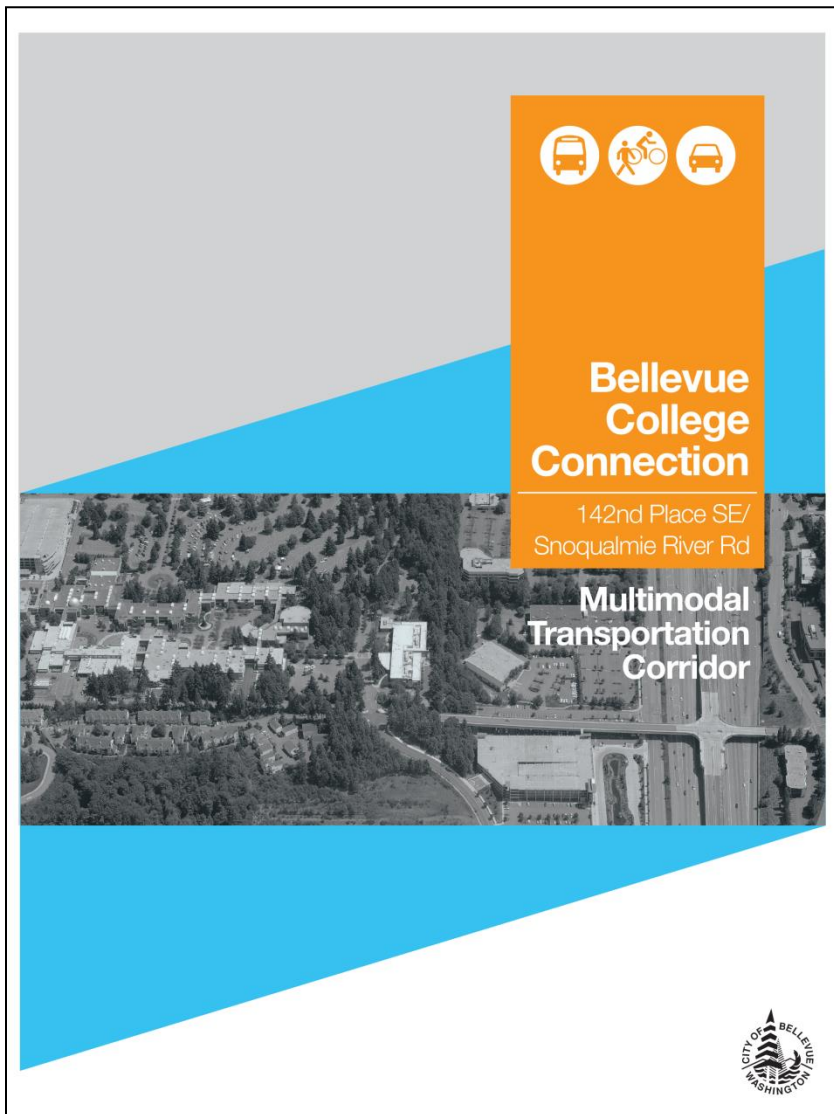


# Resolution No. 6859 (June 2, 2003)

# Capital Projects (since 2003)





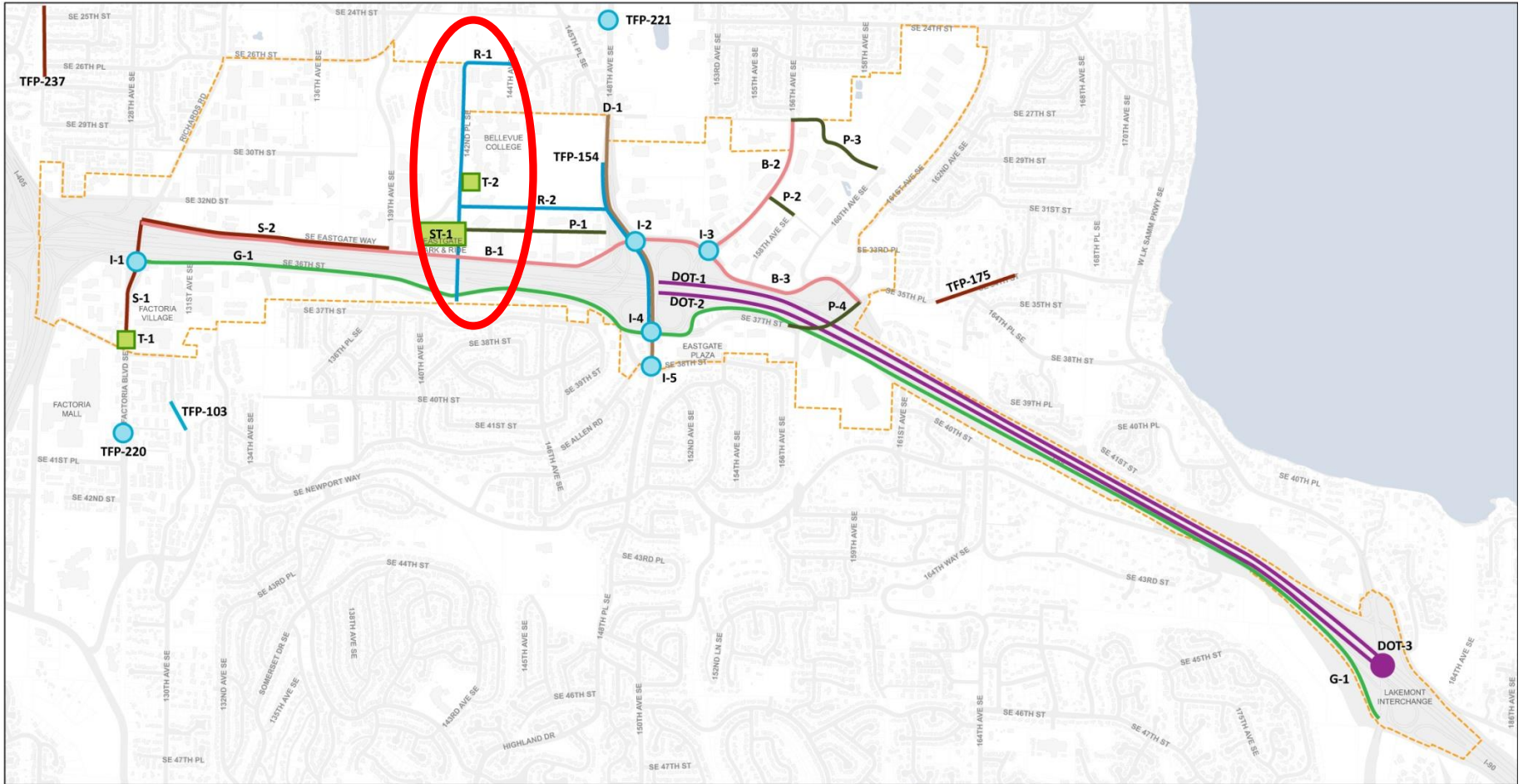


The City of Bellevue requests Sound Transit modify its Long-Range Plan to include the following description for the Bellevue College Connection Project: Upgrade the Snoqualmie River Rd roadway surface and facilities to support very frequent transit service. Include stronger road surface, sidewalks, bicycle facilities, bus stops, and parking relocation components. Non-motorized improvements to the 142nd Place SE bridge are also included.





# Eastgate/I-90 Land Use & Transportation Project



- Sidewalk
- Bicycle
- Roadway
- Boulevard treatment
- Transit
- Off-street path
- Mountains to Sound Greenway Trail
- Intersection
- Interstate/interchange





**142nd Place SE & SE 36th St (Existing Conditions)**





**142nd Place SE & SE 36th St (Preliminary Concept)**





**142nd Place SE & SE 32nd St (Existing Conditions)**





142nd Place SE & SE 32nd St (Preliminary Concept)





**Snoqualmie River Road (Existing Conditions)**





# Snoqualmie River Road (Preliminary Concept)



- 1. Staff seeks Council feedback on the Transportation Commission's Draft Transit Capital Vision Report.**
- 2. Council input informs the Commission's work finalizing the Vision Report at its May 8 meeting.**

<http://www.bellevuewa.gov/bellevue-transit-plan.htm>



**Franz Loewenherz**

Transportation Department

[floewenherz@bellevuewa.gov](mailto:floewenherz@bellevuewa.gov)

**425-452-4077**



**Bellevue Transit  
Master Plan**

**Additional Information**