



Intersection Studies on 156th Avenue SE

Study Update Meeting

April 3, 2019



KPG

Agenda

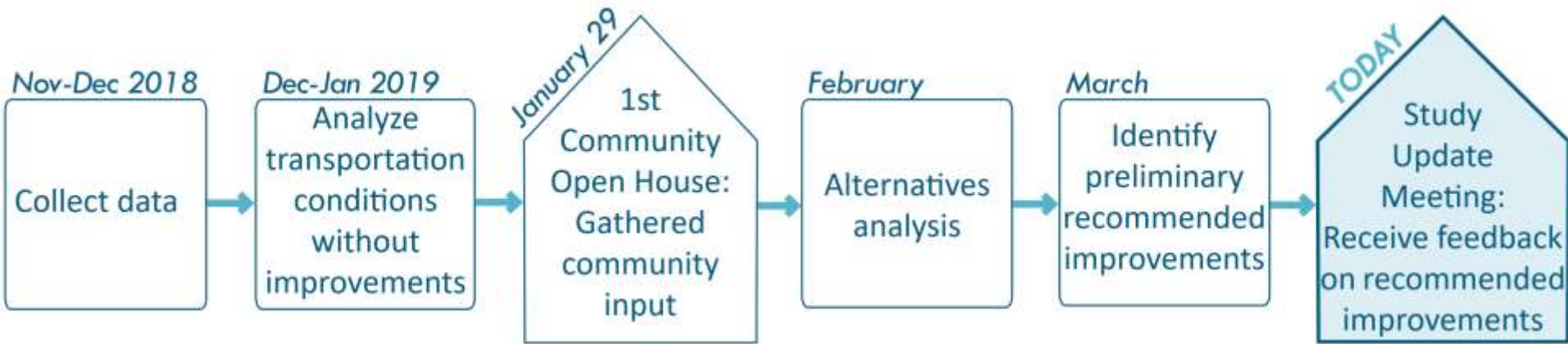


1. Introduction
2. Planning process and schedule
3. Summary of comments received at first open house
4. Preliminary recommendations
5. Next steps
6. Question and answer session

Study Intersections



Planning Process and Schedule



Next Steps



Summary of Community Comments



- Support for pedestrian safety and mobility improvements at all three intersections.
- Support for new signals or roundabouts to reduce congestion at the three intersections. However, there was a similar number of comments expressing concern that congestion improvements will increase traffic volumes.
- Support for making the SE 24th Street-SE 22nd Place (5-legged) intersection less confusing.

Evaluation Criteria



- Congestion reduction (vehicle delay and queuing)
- Safety
- Community input
- Pedestrian and bicycle mobility
- Neighborhood character
- Property impacts (intersection widening)
- Environmental impacts (wetlands, trees)
- Construction cost

Preliminary Recommendations



Preliminary Recommendation:
Add Signal with Pedestrian Improvements

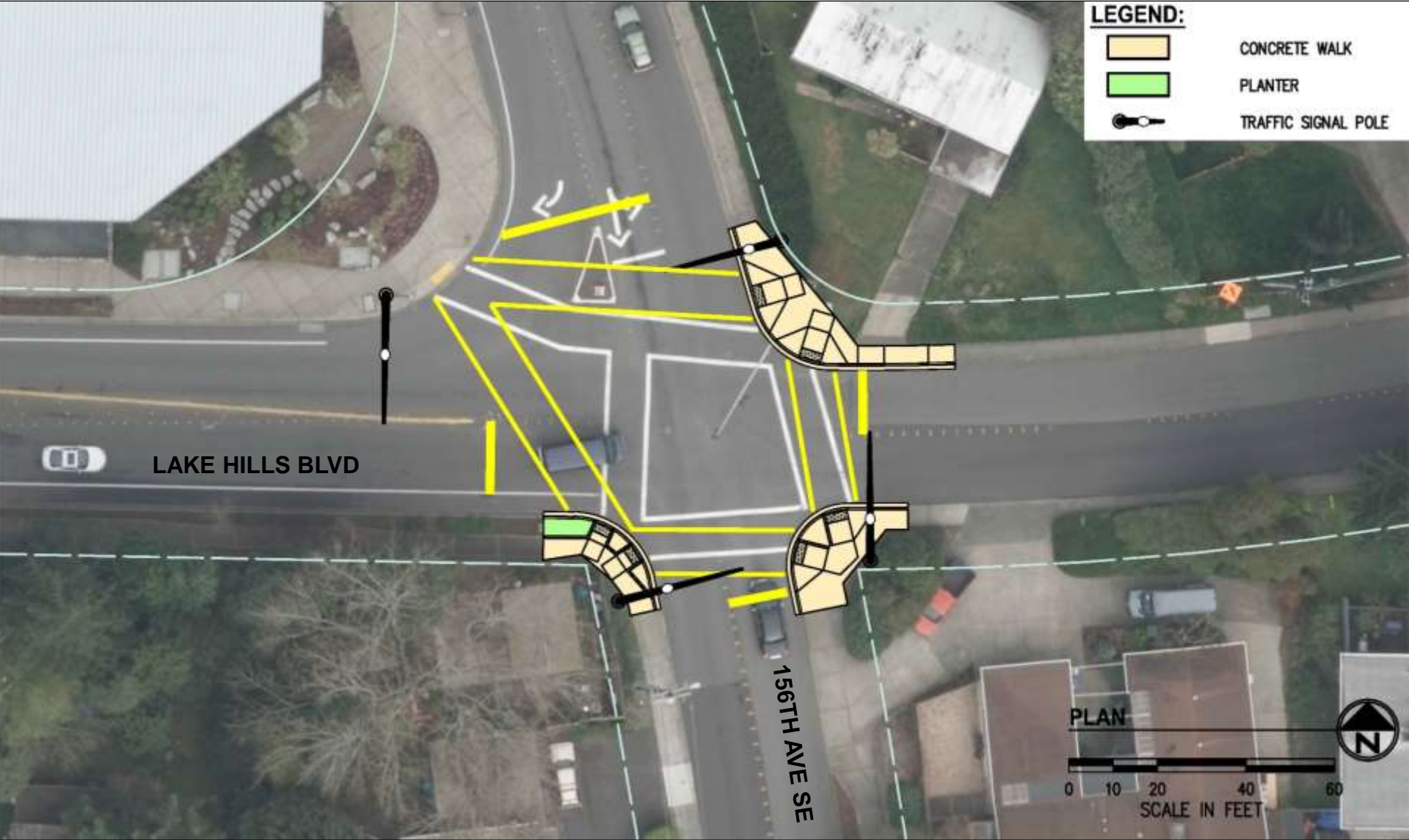
Preliminary Recommendation:
Maintain All-Way Stop with Pedestrian Improvements

Two Alternatives:
1. 4-Way Stop (Close West Leg) With Pedestrian Improvements
2. Maintain 5-Way Stop with Pedestrian Improvements

Roundabout Property Impacts



Preliminary Recommendation: Signal



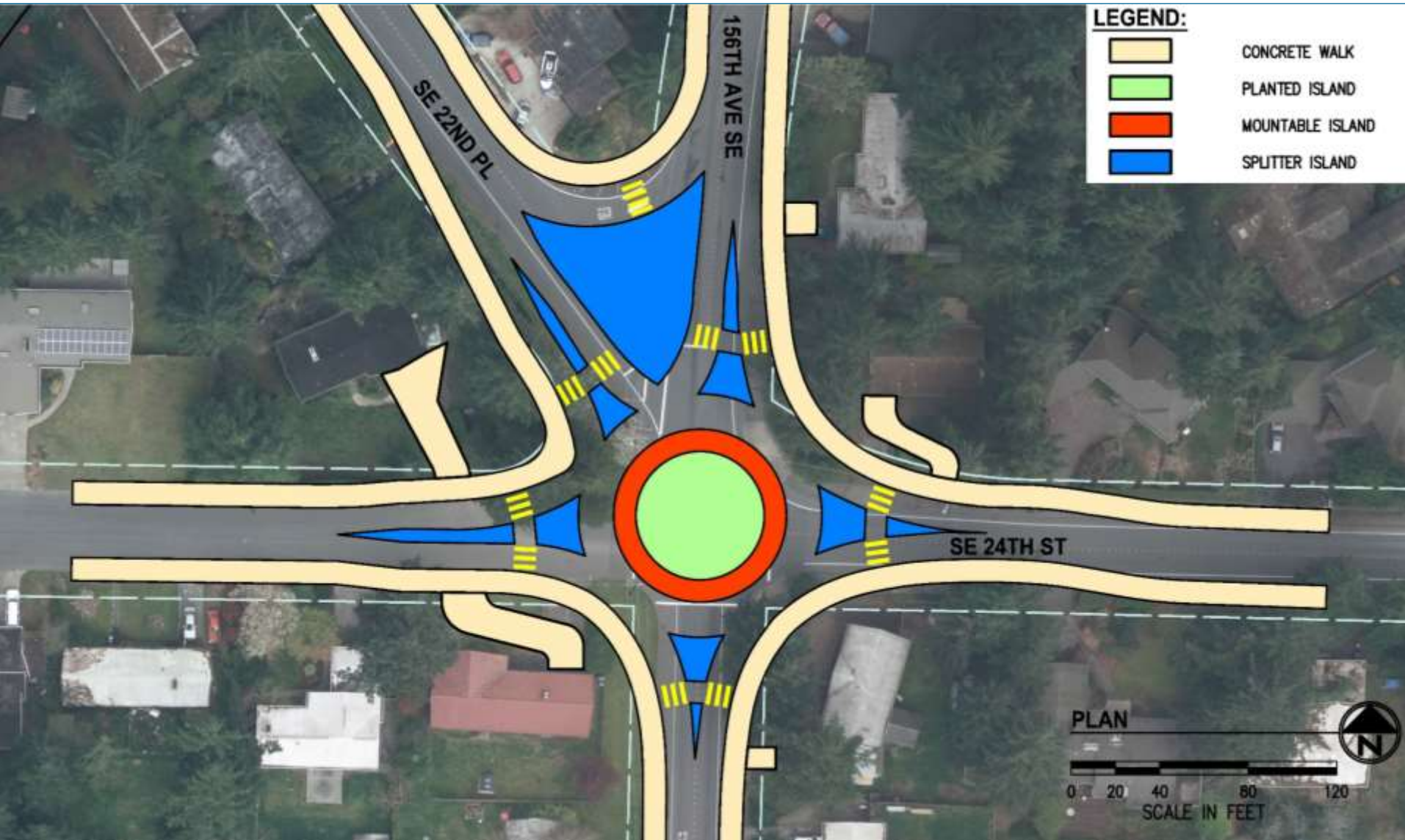
Roundabout Impacts



Preliminary Recommendation: Maintain All-Way Stop with Pedestrian Improvements



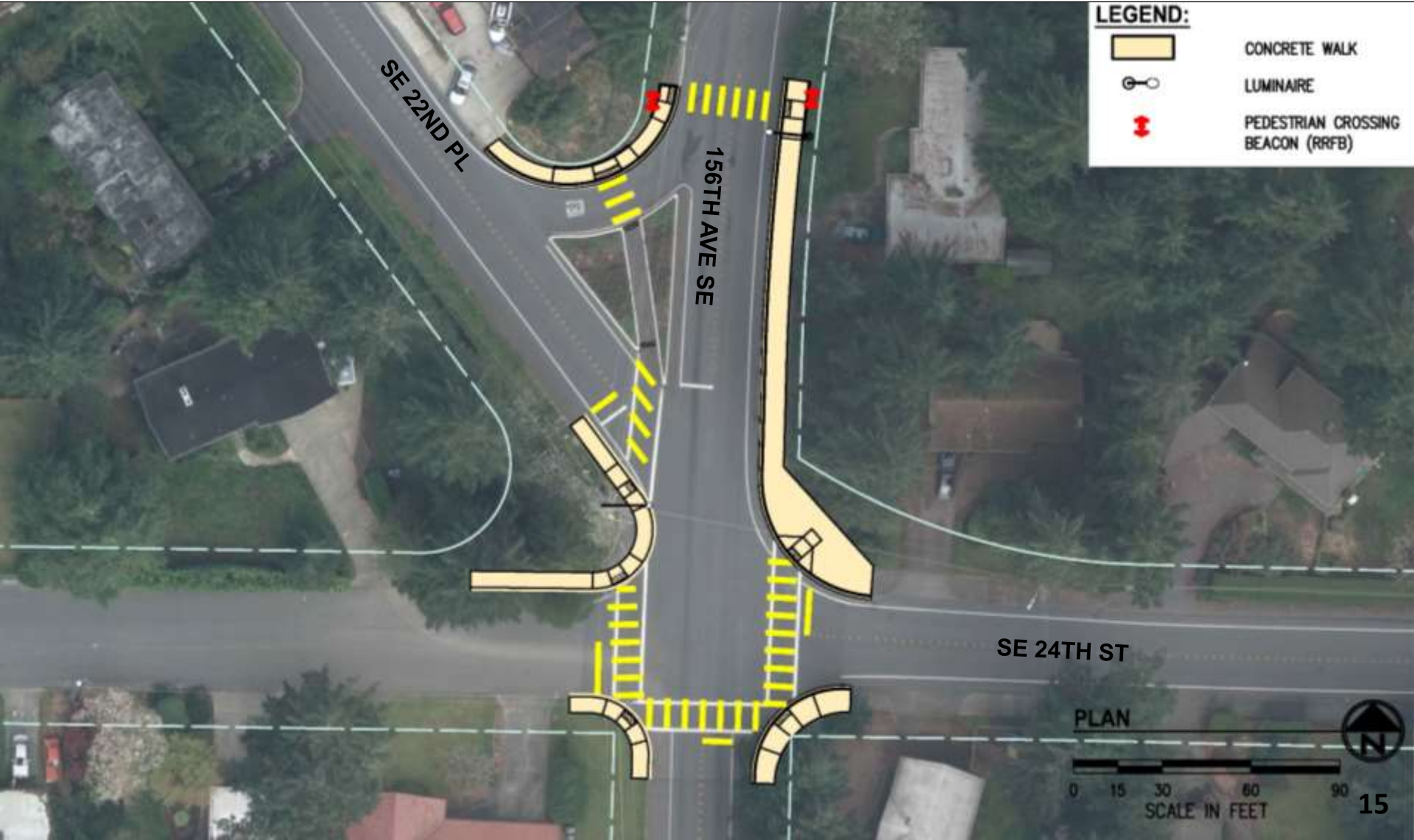
Roundabout Property Impacts



Alternative 1: 4-Way Stop with Pedestrian Improvements



Alternative 2: Maintain 5-Way Stop with Pedestrian Improvements



Next Steps

- Review comments from tonight's open house and incorporate into alternatives: **April**
- Finalize recommended improvements and develop preliminary engineering designs: **April-June**
- Complete Transportation Analysis Report: **May-June**
- This project will compete with other projects for design and construction funding from the City of Bellevue's Neighborhood Safety, Connectivity & Congestion Levy: **Second half of 2019**



Questions

Project website: BellevueWa.gov/transportationlevy

You can also contact the project manager:

Darek Jarzynski, P.E. | djarzynski@bellevuewa.gov