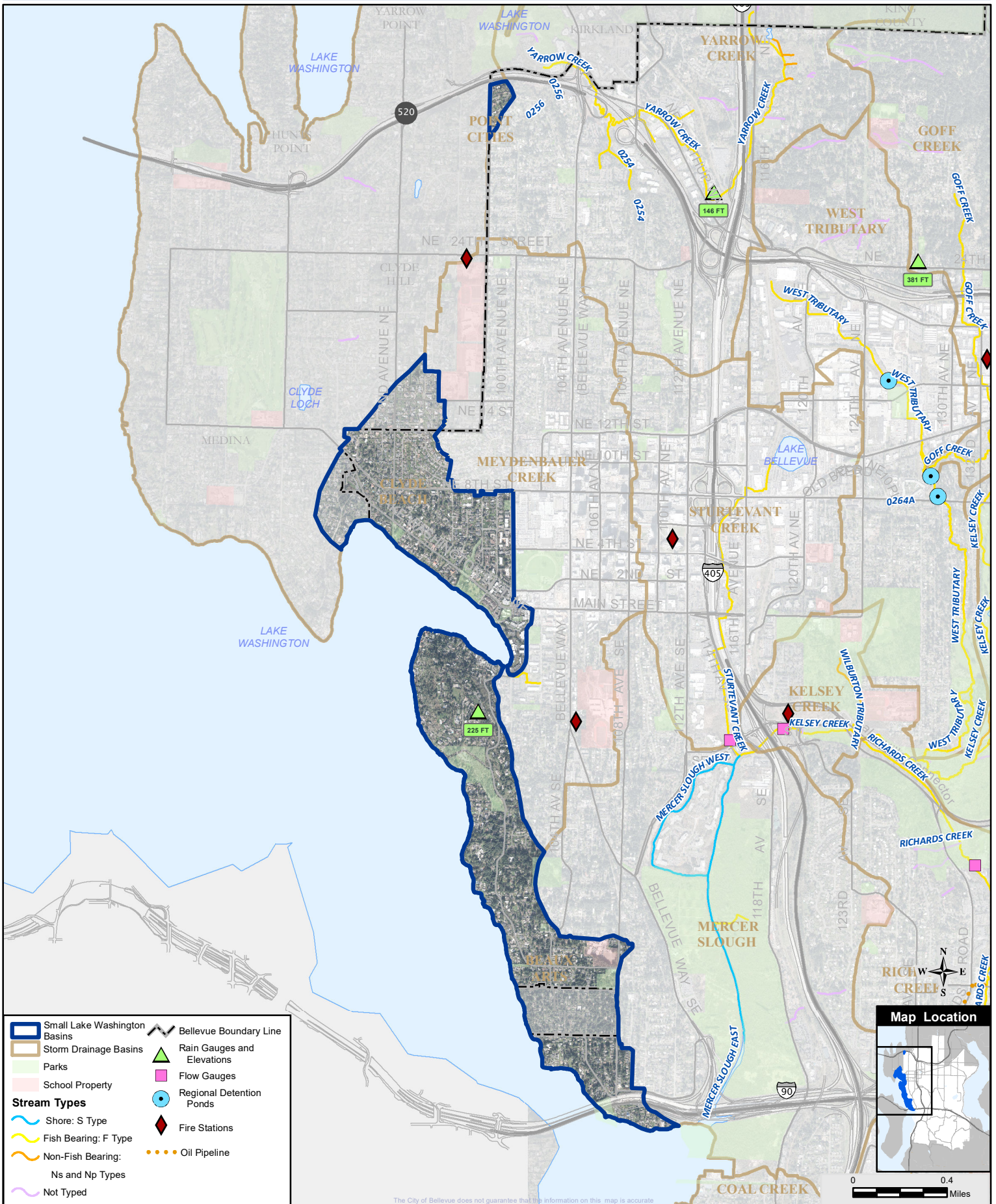
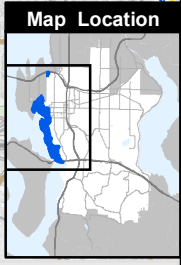


Small Lake Washington Basins

Lake Washington Watershed (WRIA 8)



The City of Bellevue does not guarantee that the information on this map is accurate



0 0.4 Miles

Small Lake Washington Basins

Lake Washington Watershed (WRIA 8)



LAND CHARACTERISTICS

Basin Area: 742 Total Acres (City Area: 2.9%)

Drainage Jurisdiction(s):

Bellevue: 82.8%

Beaux Arts: 7.0%

Clyde Hill: 5.7%

Issaquah: 0.0%

King County: 0.0%

Kirkland: 0.0%

Medina: 4.3%

Newcastle: 0.0%

Redmond: 0.0%

Renton: 0.0%

Lowest Elevation: 18 Feet

Highest Elevation: 350 Feet

Total Length of Open Channel: 0.0 Miles

Total Length of Storm Drainage Pipes: 13.7 Miles

LAND USE

Entire Basin

Within Bellevue

Public Right of Way:

18.5%

18.5%

Commercial/Office:

0.9%

1.1%

Industrial:

0.0%

0.0%

Institutional/Government:

2.1%

2.5%

Mixed Use/Misc:

3.0%

3.3%

Multi-Family:

1.1%

1.4%

Open Space/Park:

4.1%

5.0%

Single Family Residential:

64.9%

62.7%

Unknown:

5.3%

5.6%

LAND COVER

Entire Basin

Within Bellevue

Impervious

41.3%

41.9%

Tree Canopy:

43.6%

43.6%

Impervious in 100 Ft Stream Buffer:

64.2%

64.2%

Tree Canopy in 100 Ft Stream Buffer:

6.5%

6.4%

POPULATION

Basin Population (2016): 4,647 (3.1 % of all Basins)

Basin Population Density: 4,009 People per Square Mile

The population density in Bellevue ranges from 1,344 to 9,851 people per square mile.

SALMON PRESENT in BASIN

Lake only: Chinook*+, Coho+, Sockeye

Rainbow & cutthroat trout (Lake only)

Steelhead (Lake only)

* Listed Federal Endangered Species

+ City Species of Local Importance (Bellevue Land Use Code 20.25H.150A)

The City of Bellevue does not guarantee that the information on this map is accurate or complete. This data is provided on an "as is" basis and disclaims all warranties.