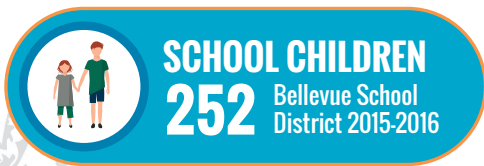


THE EMERGENCY OF BEING HOMELESS DOES OCCUR IN PEOPLE'S LIVES... ...but it should be rare, brief, and one-time

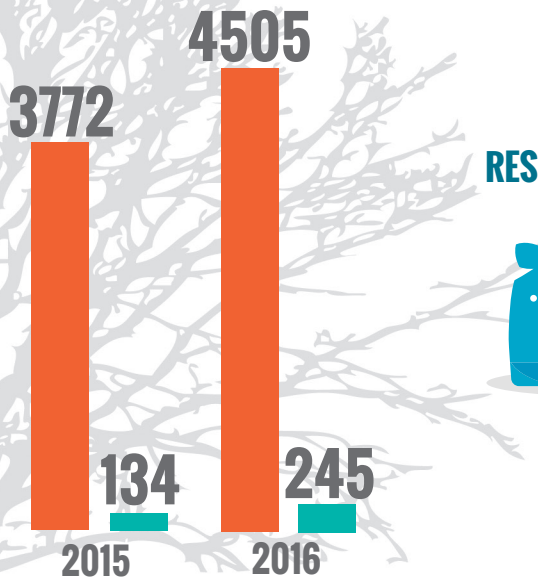
Over 1200 homeless persons served in shelters last year on the Eastside



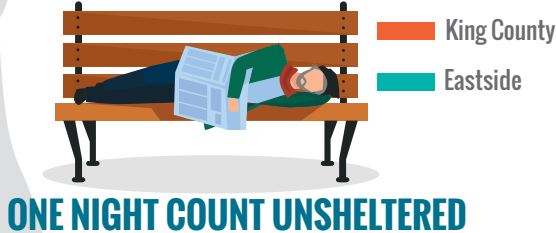
Average of 90 individuals with Tent City 4



Separate locations estimate nightly, changes with weather

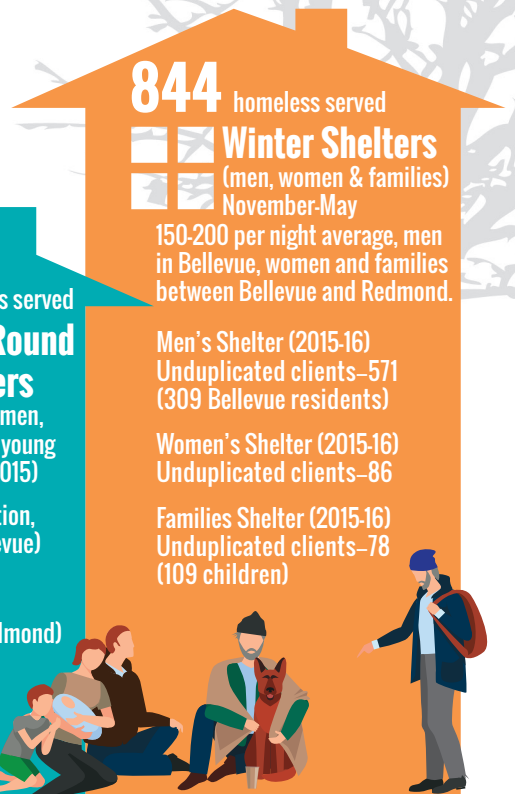
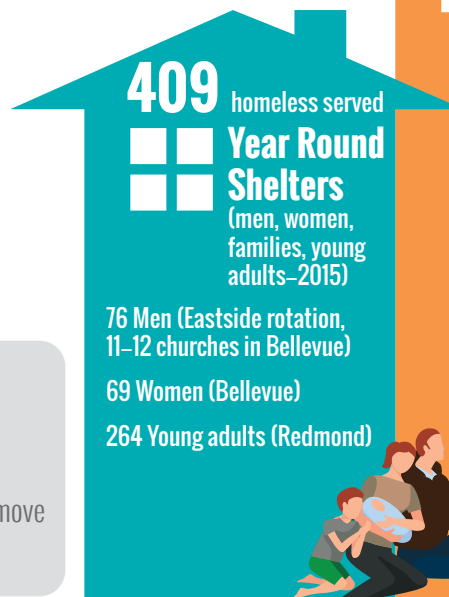


VEHICLE RESIDENCES



Bellevue City Council's Two Year Priority (2016-17)
Work with regional partners, establishing an eastside permanent homeless shelter to be ready for the winter of 2018/2019.

Provide a range of affordable housing options and support efforts to move homeless persons and families to long-term financial independence.



Eastside Men's Shelter and Supportive Housing is a partnership between City of Bellevue, King County, Public Health – Seattle & King County, Congregations for The Homeless and Imagine Housing. For more information see FAQ documents at <http://bellevuewa.gov/eastside-mens-shelter.htm>

