

Downtown Demonstration Bikeway and Bike Share Pilot Permit

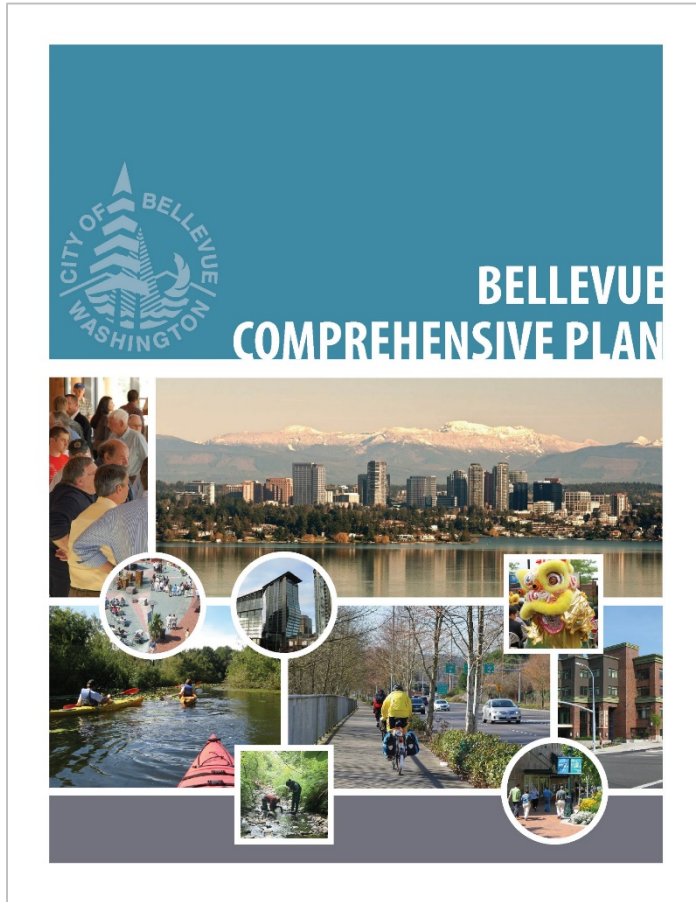


BELLEVUE
**PEDESTRIAN
& BICYCLE**
IMPLEMENTATION INITIATIVE

*Franz Loewenherz, Principal Planner
Transportation Department
City of Bellevue*

*Presentation to
TransManage Eastside Transit Talks
April 10, 2018*

Policy



Bicycle Facilities

TR-105. *Implement the Pedestrian and Bicycle Transportation Plan and prioritize projects that...*

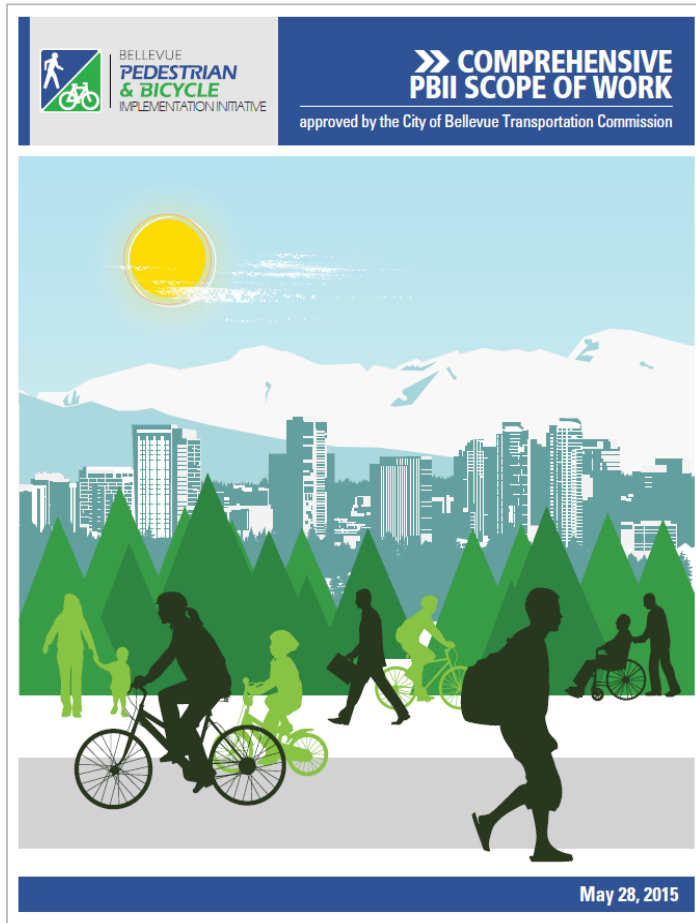
- *provide access to activity centers;*
- *provide access to transit;*
- *develop primary north-south and east-west bicycle routes through the city.*

Bike Share

TR-16. *Evaluate and facilitate car-sharing and bike sharing programs.*

TR-115. *Support establishment and operation of a bicycle sharing program in Bellevue.*

Pedestrian & Bicycle Implementation Initiative



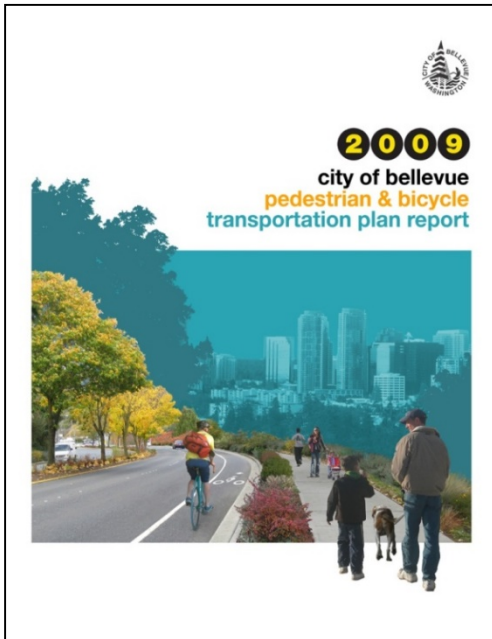
Task 2: Bicycle Priority Corridor Design Report

Build a more connected network of on-street and off-street bicycle facilities and expand the toolbox of options to increase safety with designs like protected bike lanes.

Task 6: Bike Share Feasibility Study and Implementation Strategy

Provide people in Bellevue access to a bicycle when they want one, without having to worry about storage, security, and maintenance.

Corridor Completion Targets



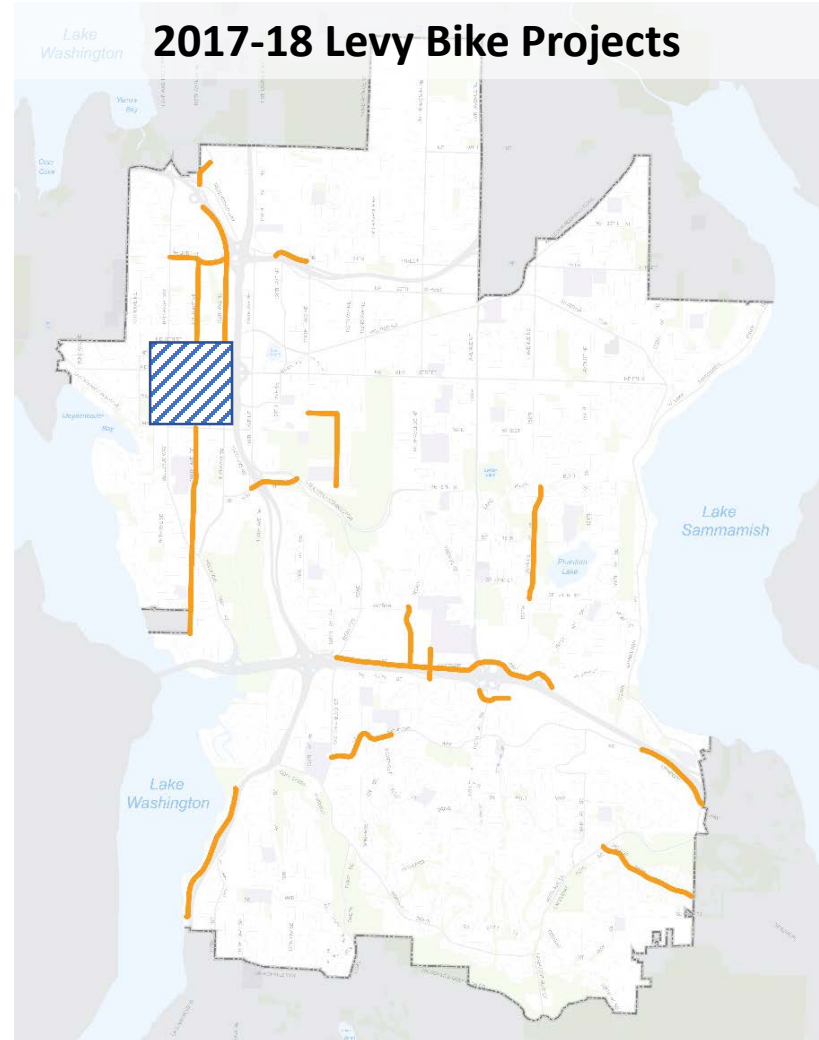
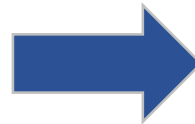
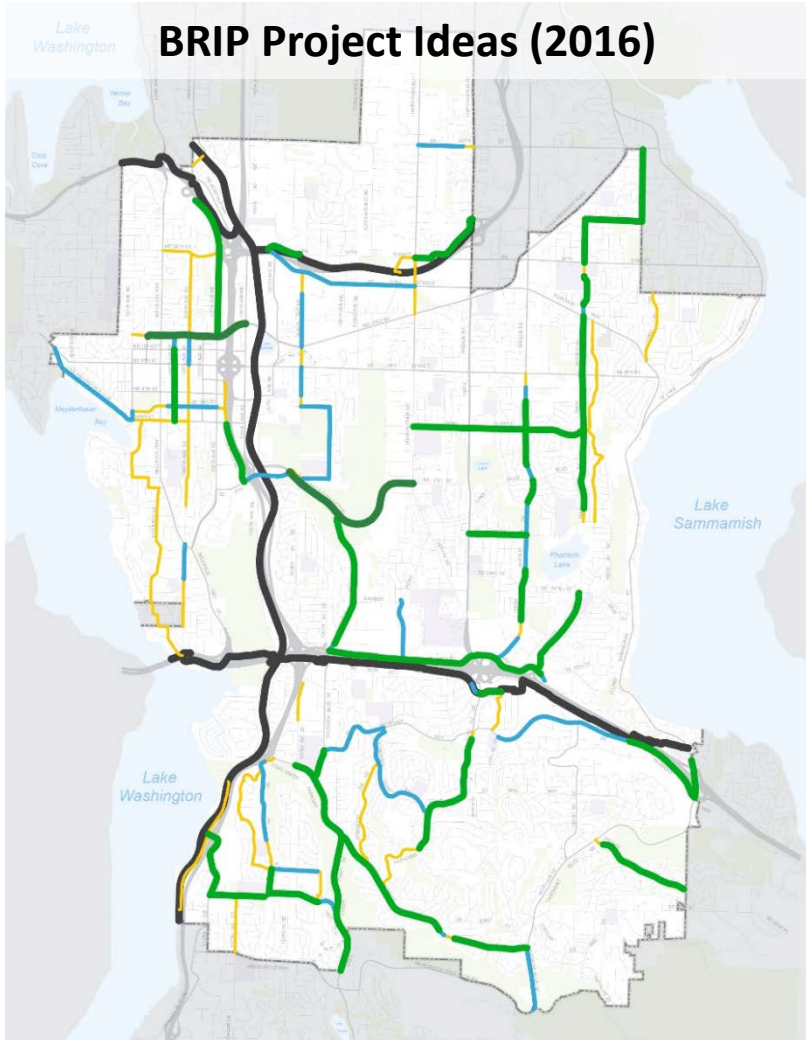
Ordinance No. 5861
(2/17/2009)



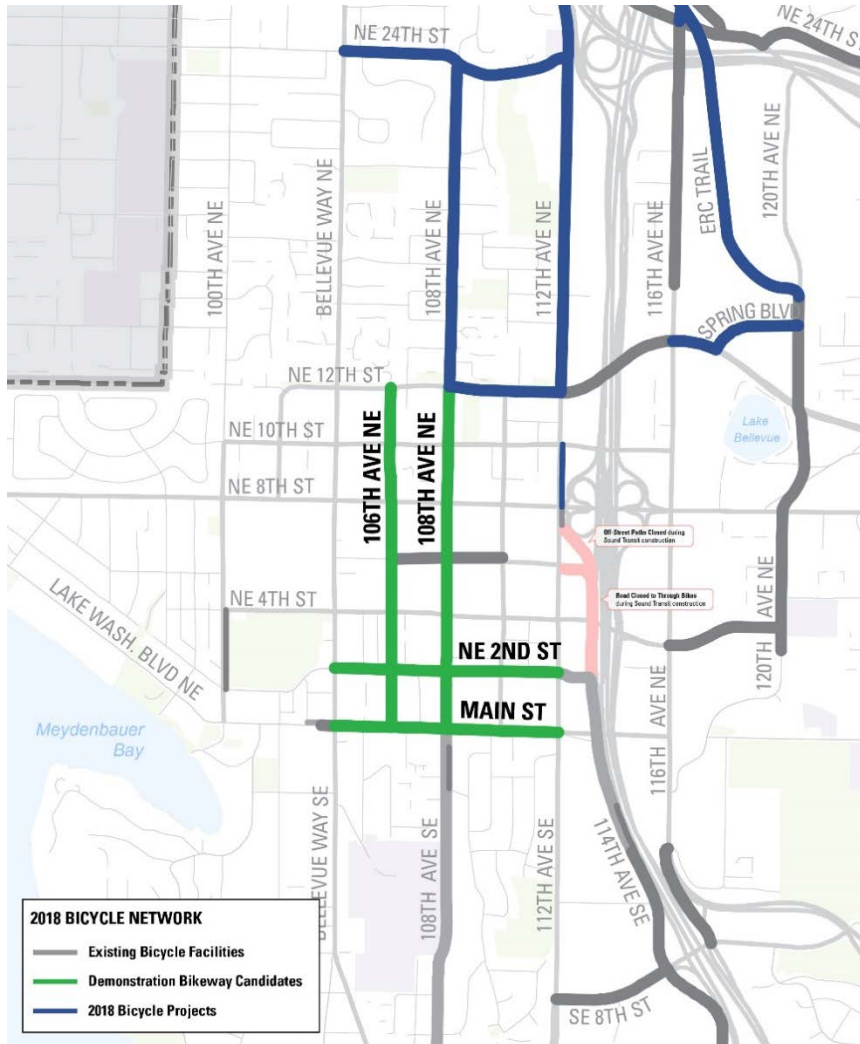
By 2019: Implement at least two completed, connected, and integrated north-south and two east-west bicycle routes spanning the city

By 2014: Implement at least one completed and connected north-south and east-west through Downtown

Bicycle Rapid Implementation Program



Downtown Bicycle Network Candidate Corridors



- **106th Ave NE**
Main St to NE 12th St
- **108th Ave NE**
Main St to NE 12th St
- **Main St**
Bellevue Way NE to 112th Ave NE
- **NE 2nd St**
Bellevue Way NE to 112th Ave NE

Engagement Process



Draft Concept for 108th Ave NE
at the Bellevue Transit Center, looking north

Information
425-452-6800
Available in Other Languages

정보, సమాచారం, Información
အချက်အလက်, معلومات, 資料, 情報
Thông Tin, 消息

For more information contact Franz Loewenherz at 425-452-4077 or flowenherz@bellevuewa.gov

We want to hear from you!

The Transportation Department is working to make Downtown Bellevue a safe, comfortable, attractive place for people to bike.

We could install Downtown's first high-comfort bikeway as a pilot project in 2018. Help pick the street and design that balances the community's priorities.

Learn about the benefits and trade-offs of concepts along four candidate streets: 108th Ave NE, 106th Ave NE, Main St, NE 2nd St.

Attend the Open House:

Thursday / November 30 / 5-7 PM
Bellevue City Hall / 450 110th Ave NE

Take the Survey:

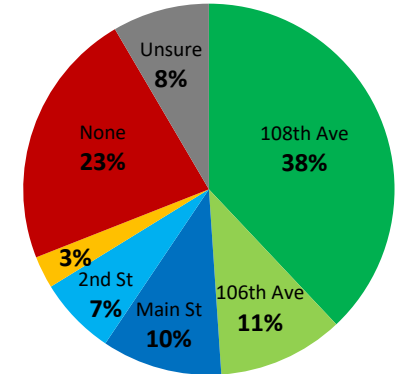
<http://www.surveymonkey.com/r/BvueBikeDemo>
Available through December 31

Postcard Mailer



Pop-Up Events

Preferred street for demo bikeway in 2018?



Online Questionnaire



BDA Bike Series



Open House

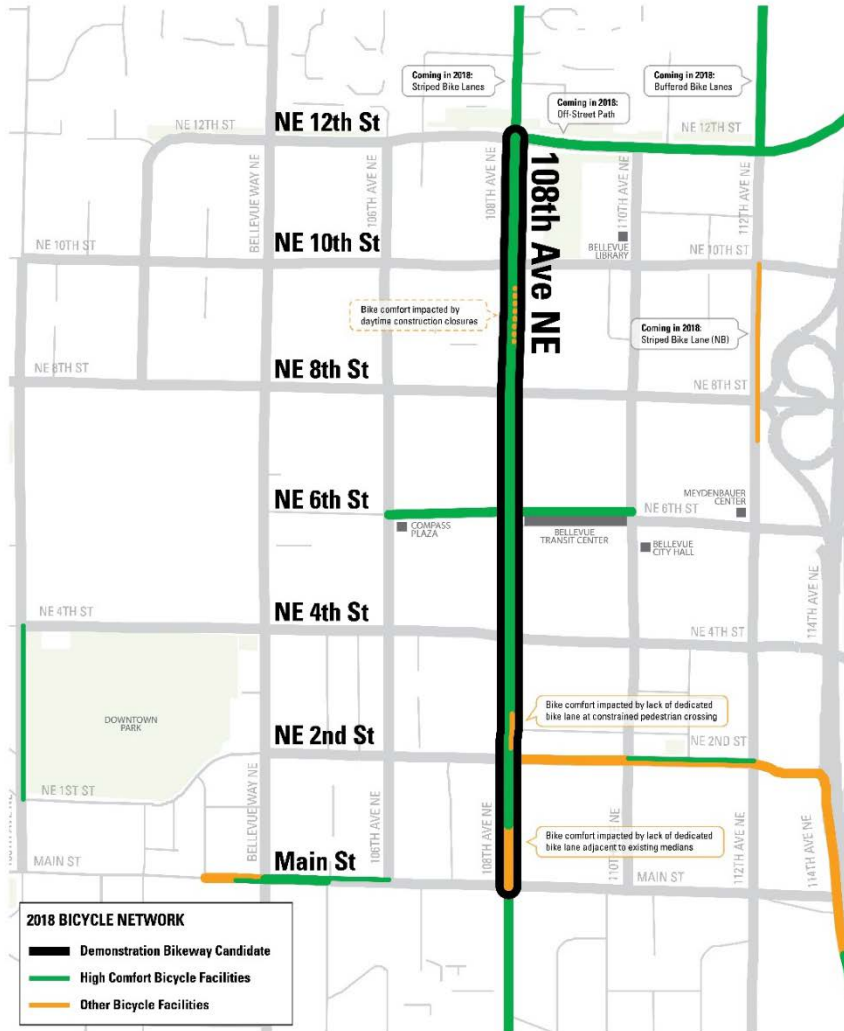


Su Development



Stakeholder Letters

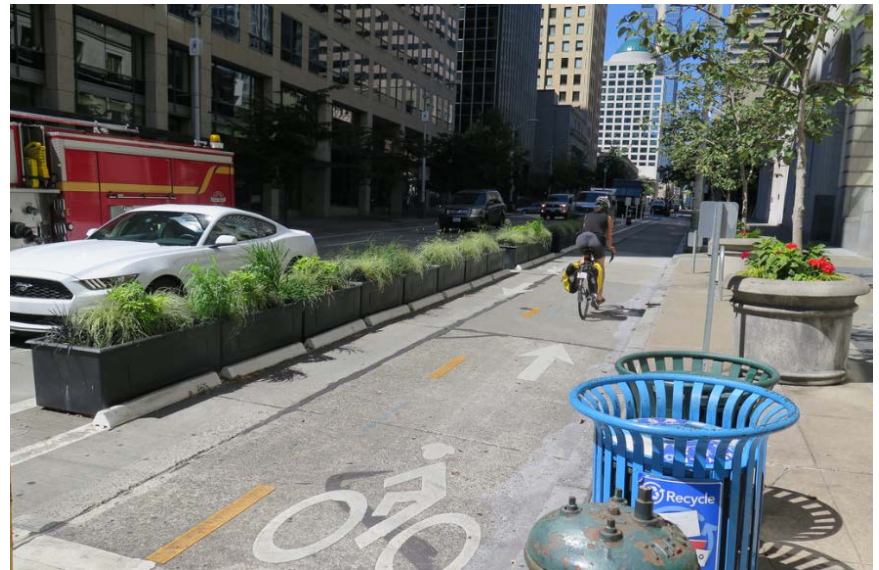
108th Ave NE Demonstration Bikeway



At NE 6th St (Bellevue Transit Center)



Representative Demonstration Treatments



Preliminary Construction Timeline



- **100% PS&E Review: Done**
- **Traffic Control Plan Preparation: Done**
- **Respond to 100% PS&E Comments and Finalize Plans: Done**
- **ROW Use Permitting Approval: Done**
- **Advertise for Construction: Apr 3 – Apr 17**
- **Council Award: May 7**
- **Execute Contracts, Pre Construction: May 8 – May 19**
- **Notice to Proceed: May 21**
- **Construction: June 11 – July 8 (assumes no weather delays)**

Demonstration Bikeway Assessment Framework

Safety

- Collisions
- Perceptions of Safety
- Traffic Conflicts and Interactions

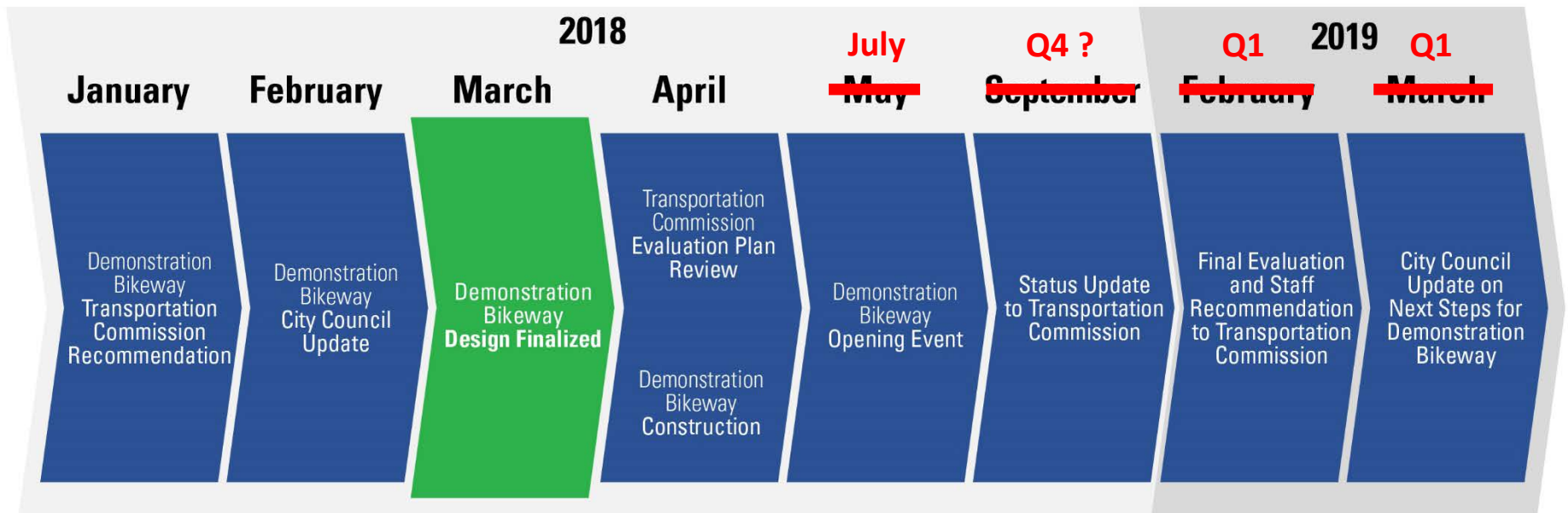
Efficiency

- Motor Vehicle Travel Time
- Bus Delay
- Automobile Delay
- Network Assessment

Livability

- Facility Use
- User Satisfaction
- Bicycle Level of Service
- TNC and Freight Delivery

Project Timeline



Communications?



Grand Opening Event | Ideas & Involvement?



“I’m really happy that this is happening... 108th is the right place to have a bicycle and pedestrian facility. It can become an exciting corridor. We have to provide these opportunities in the City... We look forward to being out there when it opens up.”

- Mayor Chelminiak

Bike Share Background



Eastside Bike Share Vendor Fair

- **February 2009** – Council adopted Ped/Bike Transp. Plan & CPA
- **February 2015** – Council initiated Ped/Bike Implementation Initiative
- **June 2015** – TC input into Comprehensive Plan Update
- **July 2015** – State allocated \$5.5M for Eastside bike share
- **September 2017** – Eastside Bike Share Vendor Fair and online survey
- **November 2017** – TC check-in with survey results
- **January 2018** – TC discussion of bike share pilot permit goals
- **March 2018** – TC endorsement of bike share pilot permit framework
- **March 2018** – City Council update on framework and timeline

Approach

City of Bellevue, WA

Search Codes and Documents Search

+ Advanced Search

Bellevue City Code

Title 14 TRANSPORTATION CODE
Chapter 14.30 RIGHT-OF-WAY USE CODE

Help Text Size: - +A SHRR

Home < >

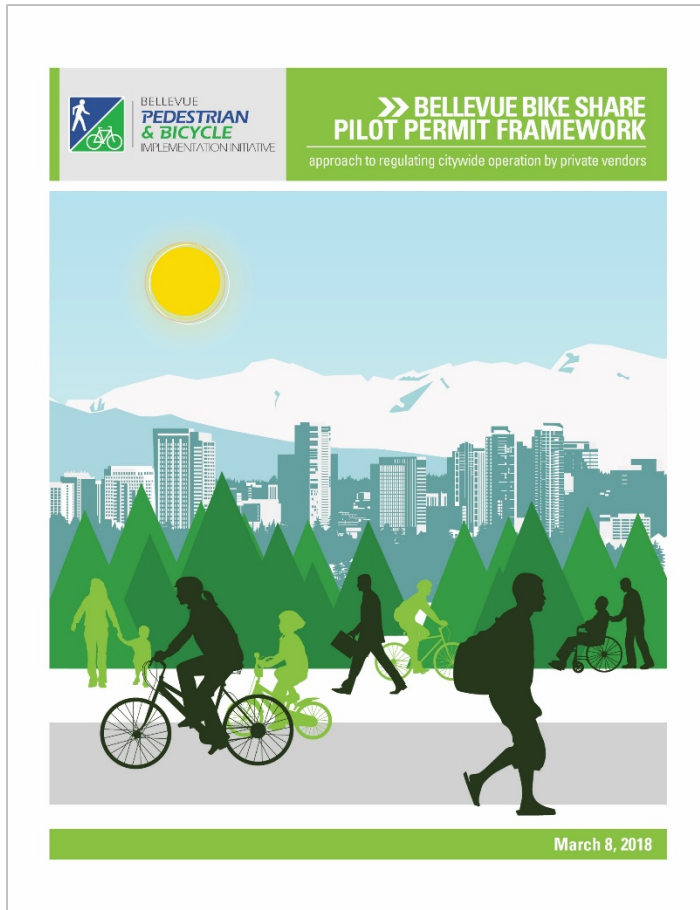
Chapter 14.30
RIGHT-OF-WAY USE CODE

Sections:

- 14.30.010 Short title.
- 14.30.020 Purpose.
- 14.30.030 Territorial application.
- 14.30.040 Construction – Intent.
- 14.30.050 Definitions.
- 14.30.060 Powers of the director.
- 14.30.070 Permit requirements.
- 14.30.075 Additional permits.
- 14.30.080 Right-of-way use permits.
- 14.30.090 Applications and processing of permits.
- 14.30.100 Permit fees and charges.
- 14.30.110 Specifications.
- 14.30.120 Permit exception.
- 14.30.130 Revocation of permits.
- 14.30.140 Renewal of permits.
- 14.30.150 Assurance device/insurance.
- 14.30.160 Hold harmless.
- 14.30.170 Guarantee.
- 14.30.180 Inspections.
- 14.30.185 Relocation.
- 14.30.190 Correction and discontinuance of unsafe, nonconforming, or unauthorized conditions.
- 14.30.195 Shared use of excavations.
- 14.30.200 Warning and safety devices.
- 14.30.205 Construction notification signs.
- 14.30.210 Debris and spilled loads in the right-of-way.

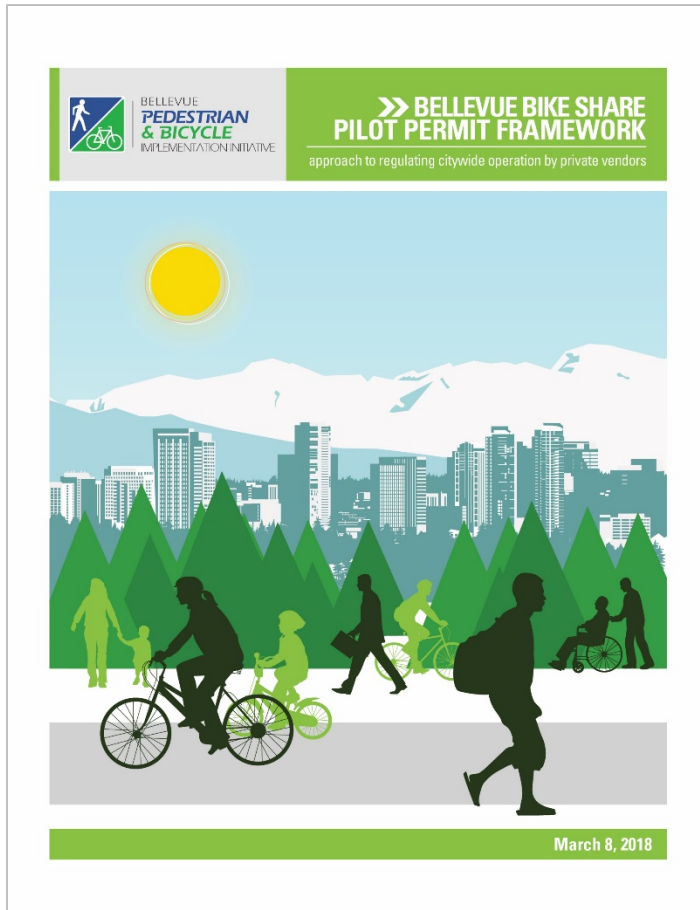
- **Right-of-Way Use Permit**
- **Type D – Long Term, No Disturbance (BCC 14.30.080)**
- **Director’s authority (BCC 14.30.090)**
 - Impose conditions as reasonably necessary
 - Protect the public health, welfare and safety
 - Mitigate any impacts resulting from the use

Pilot Permit Goals



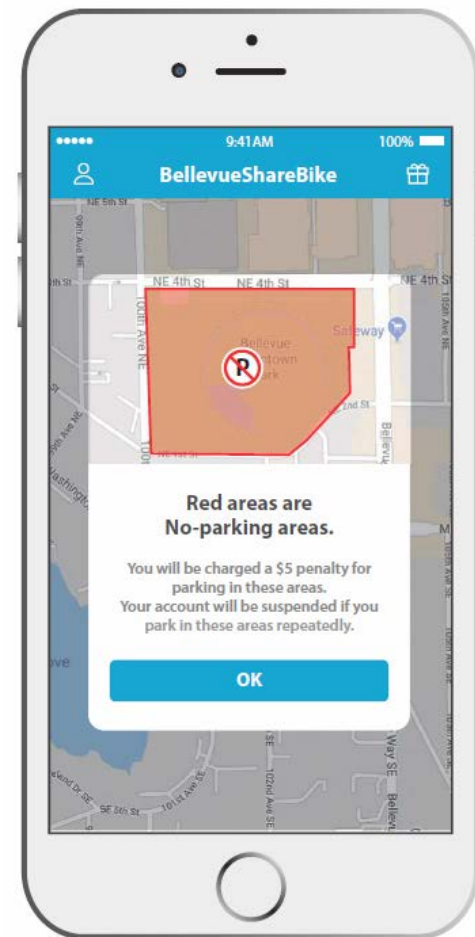
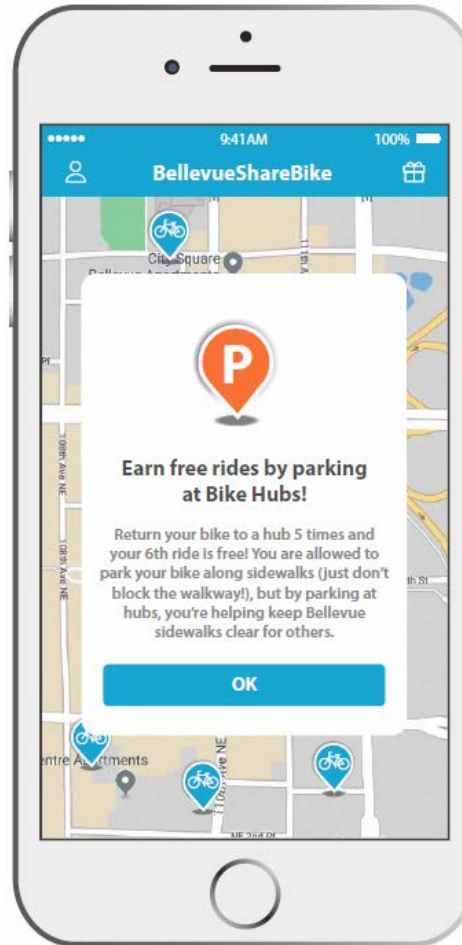
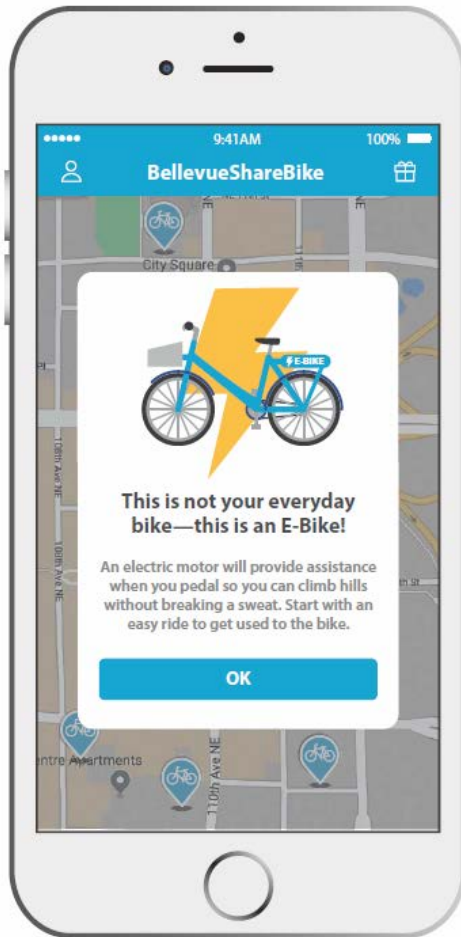
- **Pilot**
- **Quality**
- **Safety**
- **Parking**
- **Operations**
- **Evaluation**
- **Enforcement**
- **Cost Recovery**
- **Equity**

Pilot Permit Strategies

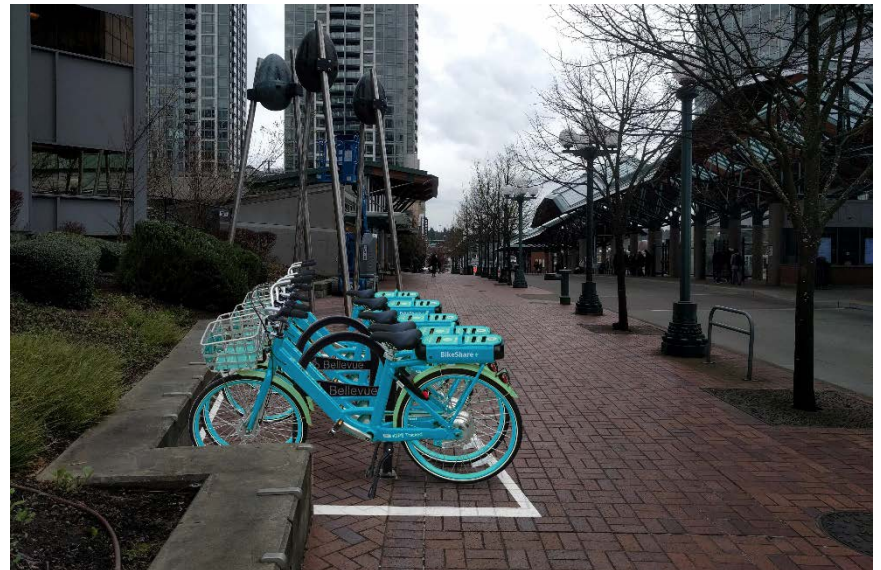


- **Electric-assist bikes only**
- **Modest fleet size at launch**
- **Citywide service, targeted distribution by geographic area**
- **Bike share hubs**
- **Defined “No Parking” areas**
- **System growth based on operator compliance**

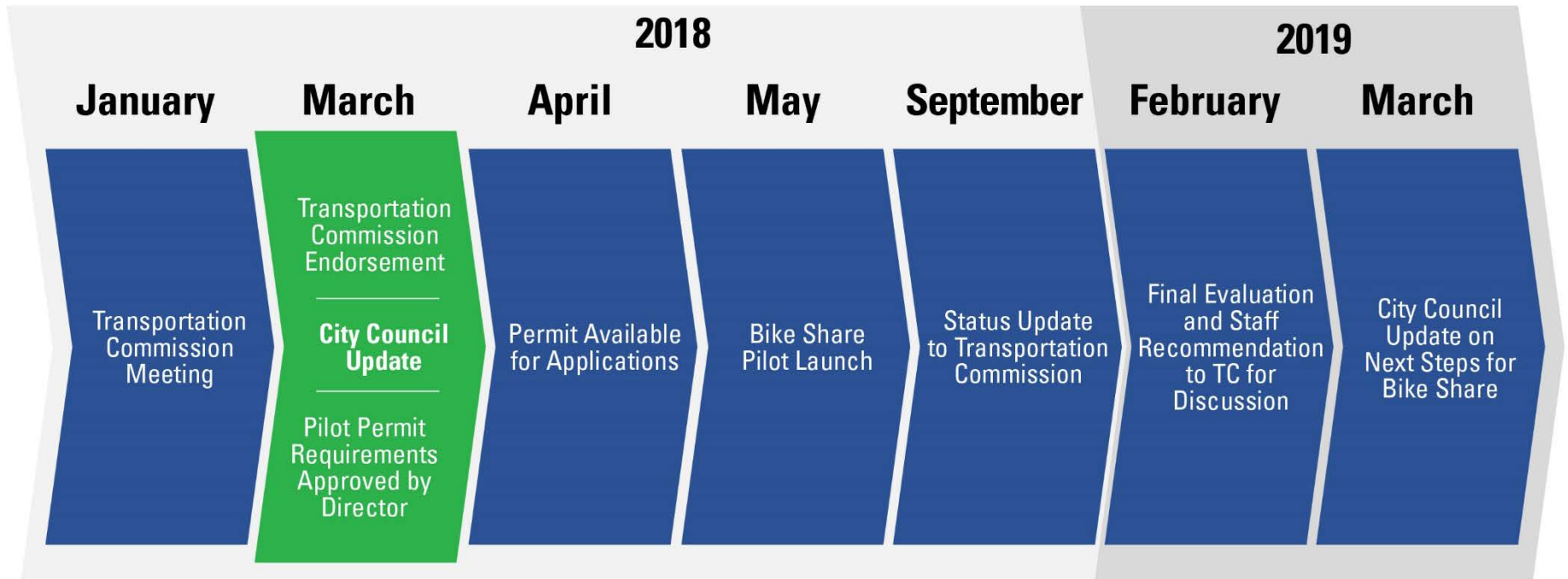
Pilot Permit Strategies



Bike Hubs



Draft Timeline



For More Information



Franz Loewenherz
Principal Transportation Planner
floewenherz@bellevuewa.gov
425-452-4077