

» BELLEVUE BIKE SHARE PILOT

APP-BASED SERVICES COMING SPRING 2018



BIKE SHARE COMING SOON!

The City of Bellevue will begin permitting private companies to operate bike share services in spring 2018. Look for the bikes at parking hubs and racks near you—and wherever else you want to ride!

Bellevue's bike share pilot will last for up to one year. Data will be collected during that time to help inform the future of bike share in the city.

What Is Bike Share?

Bike share is an affordable, healthy, eco-friendly transportation option that is ideal for short point-to-point trips. Users pick up a bike in one location and park it at their destination. You can find and unlock the nearest bike through the company's mobile app. When you finish your ride, the bike is available for someone else to rent to get wherever they need to go.



What's Different in Bellevue?

You may be familiar with bike share in other cities, but there are some unique features to the services that are coming to Bellevue.

- **Dockless** – The freedom to pick up and drop off a bike anywhere you need it—just keep them on pavement, and don't block walkways, bus stops, driveways, or loading zones.
- **E-Assist** – Don't let Bellevue's hills get in your way. Every bike share will have an electric motor that provides a boost while you pedal, so you can go anywhere without breaking a sweat.
- **Bike Hubs** – Designated parking areas will help maintain orderly public spaces. You can expect to find a bike at these locations, and you'll receive a bonus for leaving a bike there at the end of your trip.

For more info visit: BellevueWA.gov/BikeShare



Why Use Bike Share?

Bike share can be a convenient and fun way to get around Bellevue—and it can sometimes be the fastest way too! Bike share could help you...

- bypass traffic congestion;
- save time and money on parking;
- connect to and from transit services;
- get across town faster than walking.

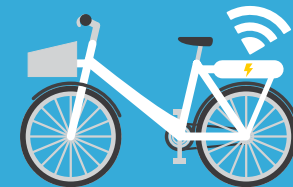
Bike share can be useful for all kinds of transportation needs: for getting to work or school, going out for lunch or a night on the town, getting groceries or taking care of errands, taking children to the park, or just going for a leisurely ride.

Yes, bicycling is healthy, but it doesn't have to just be for exercise. It can also be a quick, easy, and joyful way to get to all the places you already go by car, bus, or on foot. Give bike share a try sometime!



» BELLEVUE BIKE SHARE PILOT

APP-BASED SERVICES COMING SPRING 2018



How Do I Use Bike Share?

- **Download.** Install the company's mobile app on your smartphone.
- **Locate.** The app will show you a map with all of the bikes that are near you.
- **Scan.** When you find the bike you want, use the app to scan its QR code to unlock the bike.
- **Lights? Brakes? Action!** Check to make sure the bike is in good working condition. Companies are responsible for maintaining bikes regularly, but for your own safety, always check before starting a trip.
- **Protect Your Noggin.** Always wear a helmet when using bike share. It's the law in Bellevue for people of all ages. Besides, it's the smart thing to do. (Better safe than sorry.)
- **Enjoy The Ride!**
- **Park, Lock & Go.** Leave the bike at parking hubs or bike racks to receive a bonus. If you leave it elsewhere, make sure it's on pavement and out of the way. Do not leave the bike in parks or on private property, except where specially marked in the app and on the ground.
- **Report A Problem.** Is something wrong with the bike you rented? Is there a bike parked improperly? Did someone leave a bike on your property? Notify the company via their app, hotline, or email, or use the MyBellevue app.

How Much Does A Ride Cost?

The cost per ride may vary by company. The City will not run the service and therefore does not set the price. Avoid surprises—make sure you understand how much a ride will cost before you start.

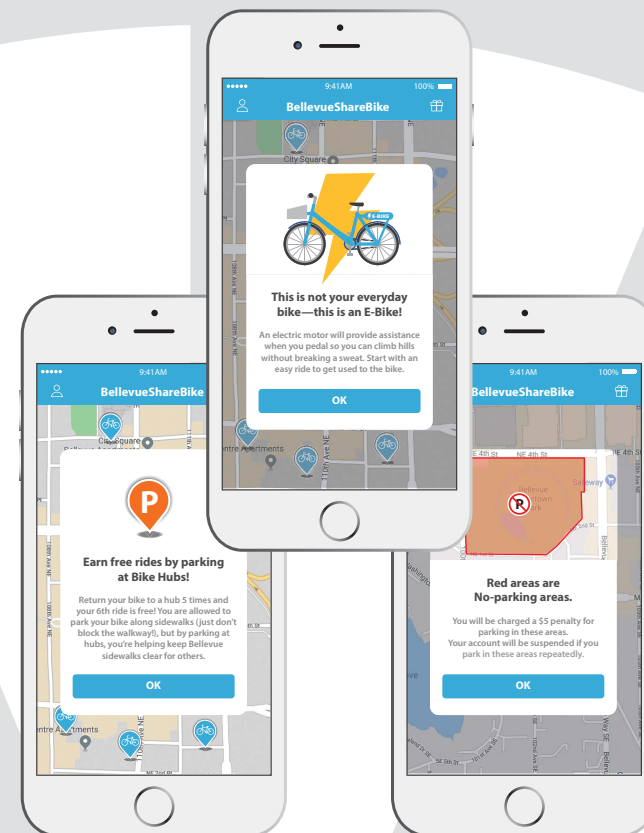
How Much Will This Cost Taxpayers?

Zero. Zilch. Nada.

Bike share services in Bellevue will be provided by private businesses. The City will not own or operate the system. The Transportation Department has established requirements to which private companies must adhere to receive and retain a permit to use the public right-of-way (aka streets and sidewalks). Included in those requirements are fees to reimburse the City for a variety of costs, including staff time to review and approve permit applications, collect and evaluate data, ensure compliance, and install bike hubs.

No smartphone? No credit card? No problem.

You will also be able sign up to use bike share by visiting the Service First desk at Bellevue City Hall during business hours. City staff can help you create and add cash to an account. To unlock a bike, just call the company from any phone, and you're good to go.



Information
425-452-6800
Available in Other Languages



정보 సమాచారం
जानकारी
معلومات
資料
Информация
情報 (じょうほう)
Thông Tin
اطلاعات



For more information contact:

Andreas Piller
Associate Transportation Planner
APiller@bellevuewa.gov
425-452-2931