

**FIRST AMENDMENT TO
THE TRANSIT WAY AGREEMENT
BETWEEN THE CITY OF BELLEVUE AND THE CENTRAL PUGET SOUND
REGIONAL TRANSIT AUTHORITY**

THIS First Amendment is made by and between the City of Bellevue, a non-charter optional municipal code city ("Bellevue" or "City"), and the Central Puget Sound Regional Transit Authority organized under RCW 81.112 ("Sound Transit"), to the Transit Way Agreement executed between the parties on November 15, 2011 ("Agreement").

RECITALS

WHEREAS, the City and Sound Transit entered into the Agreement to construct, operate and maintain the East Link Project pursuant to the authority granted in City Resolution 8322 and Sound Transit Motion No. M2011-77;

WHEREAS, pursuant to the Umbrella Memorandum of Understanding which was contemporaneously executed between the parties, the Parties engaged in a collaborative process for design and development of the East Link Project, including identifying potential cost savings and alignment modifications;

WHEREAS, on March 26, 2013 Sound Transit completed and published the East Link Extension 2013 SEPA Addendum evaluating the potential modifications;

WHEREAS, on April 22, 2013 the Bellevue City council passed Resolution No. 8576 endorsing modifications for inclusion in the East Link Project and approved the East Link Project alignment and general profile;

WHEREAS, on April 25, 2013 the Sound Transit Board adopted (1) Resolution No. R2013-09 selecting the route, profiles, and station locations for the East Link Project, including the City's endorsed modifications, thereby necessitating amendments to the Transit Way Agreement, and (2) Motion 2013-27 authorizing the chief executive officer to execute amendments to the Transit Way Agreement;

NOW THEREFORE, in consideration of the mutual covenants contained herein, the City and Sound Transit do hereby agree to amend the Transit Way Agreement as described below.

1.0 Exhibits A and B are each replaced in their entirety with the following attached revised exhibits:

Exhibit A – 1 - Transit Way Description


Exhibit B – 1 - General Description of Light Rail Alignment, Station and Facilities Locations

2.0 Unless expressly revised by this First Amendment, all other terms and conditions of the Transit Way Agreement shall remain in effect and unchanged by this First Amendment.

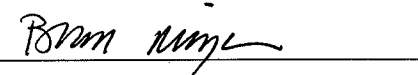
IN WITNESS WHEREOF, each of the Parties hereto has executed this First Amendment to the Transit Way Agreement by having its authorized representative affix her or his name in the appropriate space below:

CENTRAL PUGET SOUND REGIONAL CITY OF BELLEVUE
TRANSIT AUTHORITY

(SOUND TRANSIT)

By: 

Joan M. Earl, Chief Executive Officer

By: 

Brad Miyake, Acting City Manager


Date: 6/21/13

Authorized by Motion No. M2013-27

Date: 6-19-13

Authorized by Resolution No. 8596

Approved as to form:

By: 
Stephen G. Sheehy, Legal Counsel

Approved as to form:

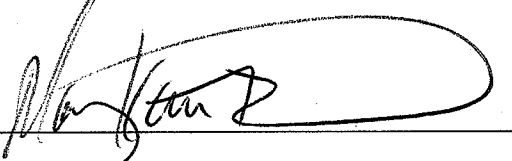
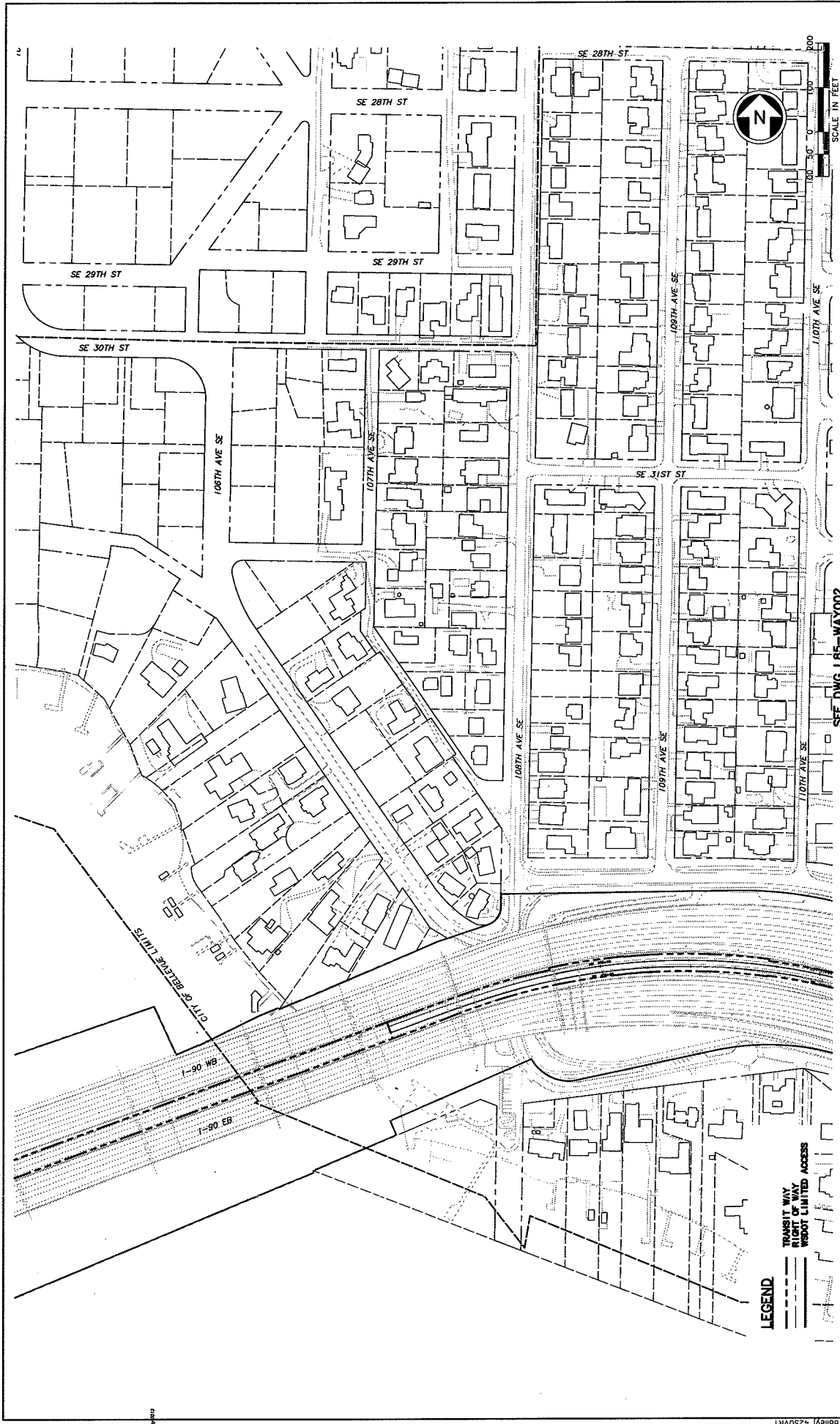
By: 
Mary Kate Berens, Deputy City Attorney

Exhibit A-1

Transit Way Description

[attached]



Drawing No. **LBS-WAY001**
Sheet No. **1**

**LINK LIGHT RAIL PROJECT
EAST CORRIDOR
SEGMENT B**

TRANSIT WAY EXHIBIT
(BASED ON CURRENT DESIGN FILES
AS OF MAY 15TH, 2013)

Scale: H: 1" = 100'
Filename: E:\20-LBS-WAY001.dwg
Comments:
Date: 05/15/13

SOUNDTRANSIT

SEE DWG LBS-WAY002

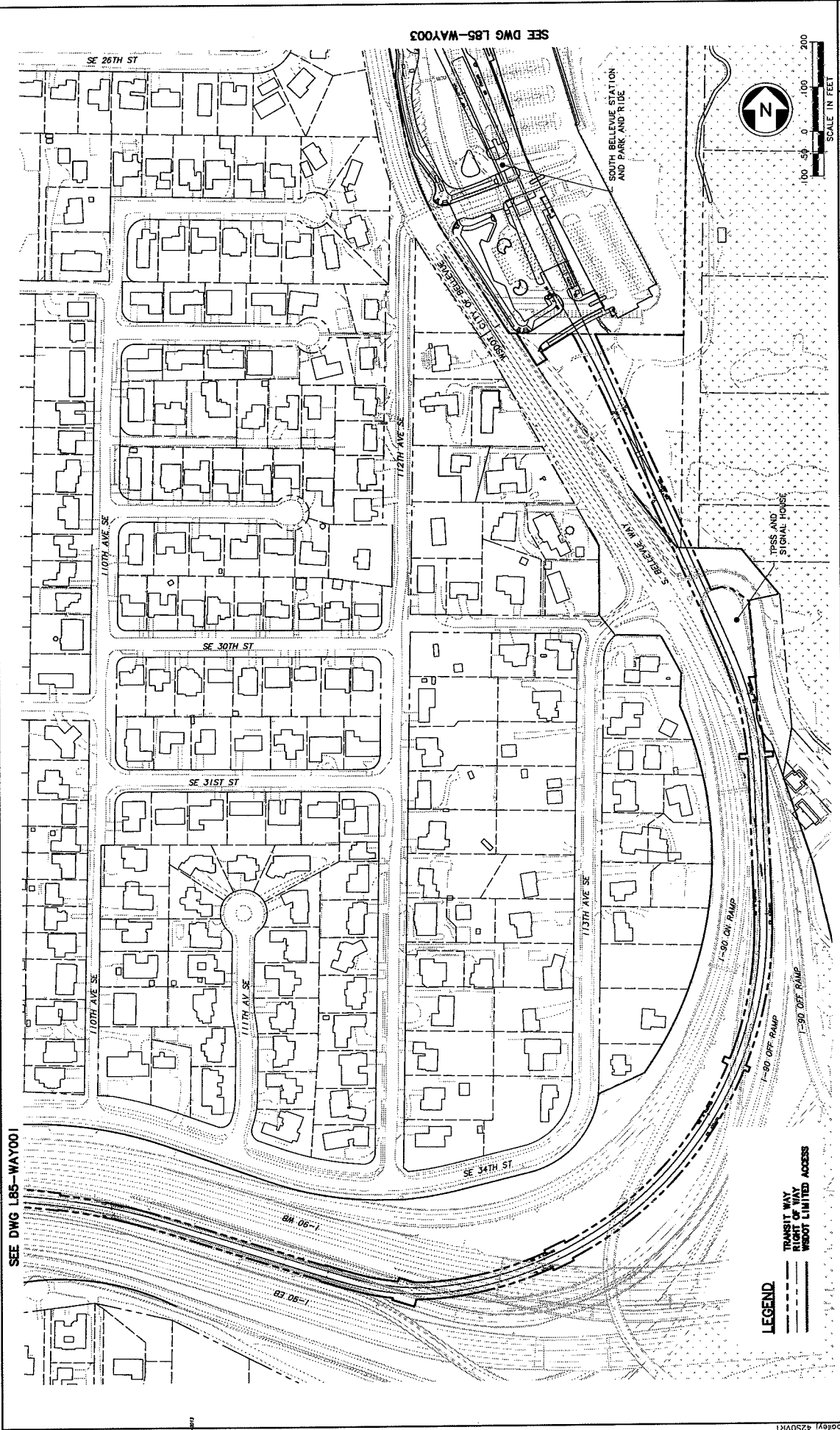
No.	Date	Des	Chk	App	Revised

Designed By: _____
Drawn By: _____
Checked By: _____
Approved By: _____

Submitted: _____ Date: _____
Reviewed: _____ Date: _____

LEGEND

--- TRANSIT WAY
--- RIGHT OF WAY
--- LIMITED ACCESS

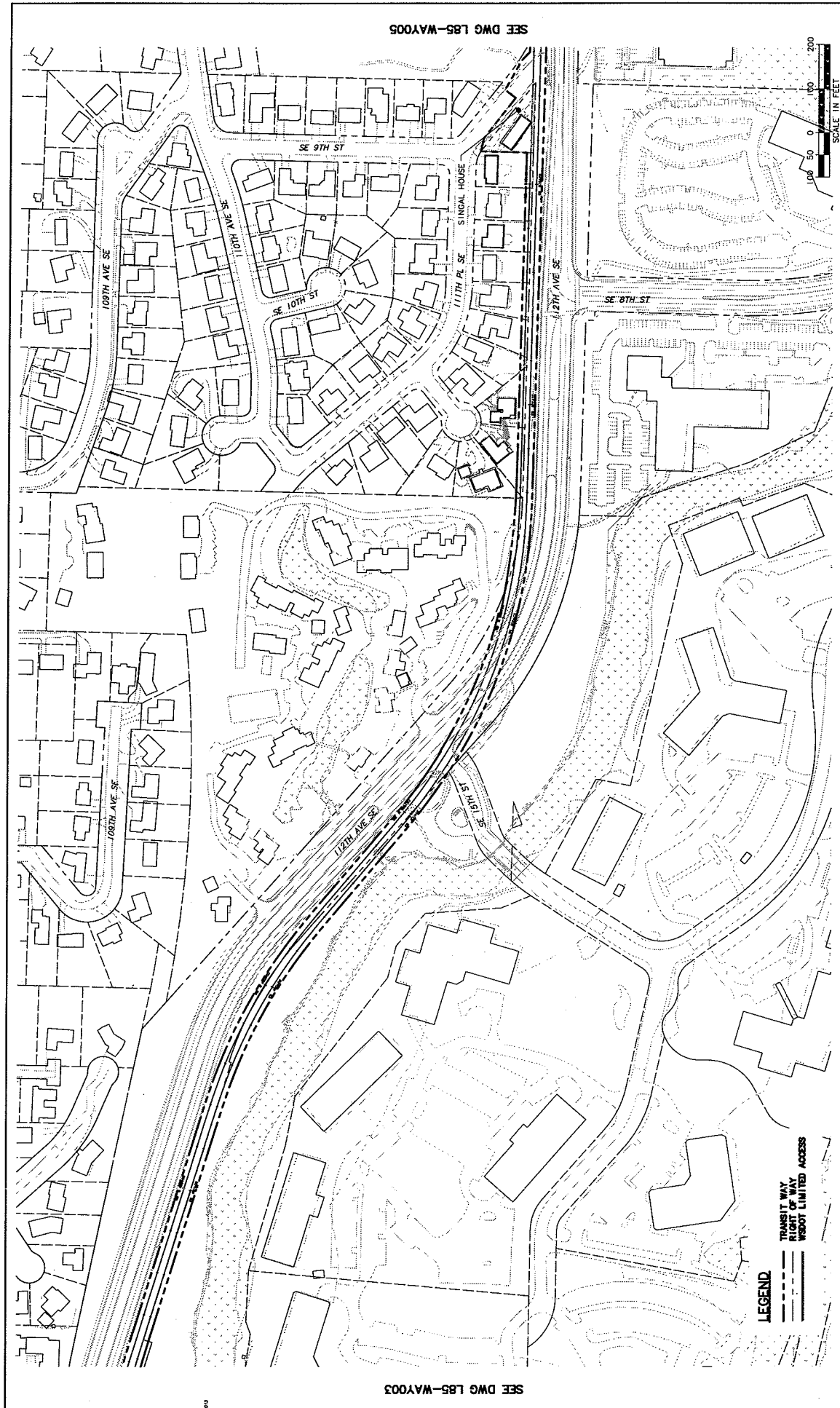


SEE DWG L85-WAY001

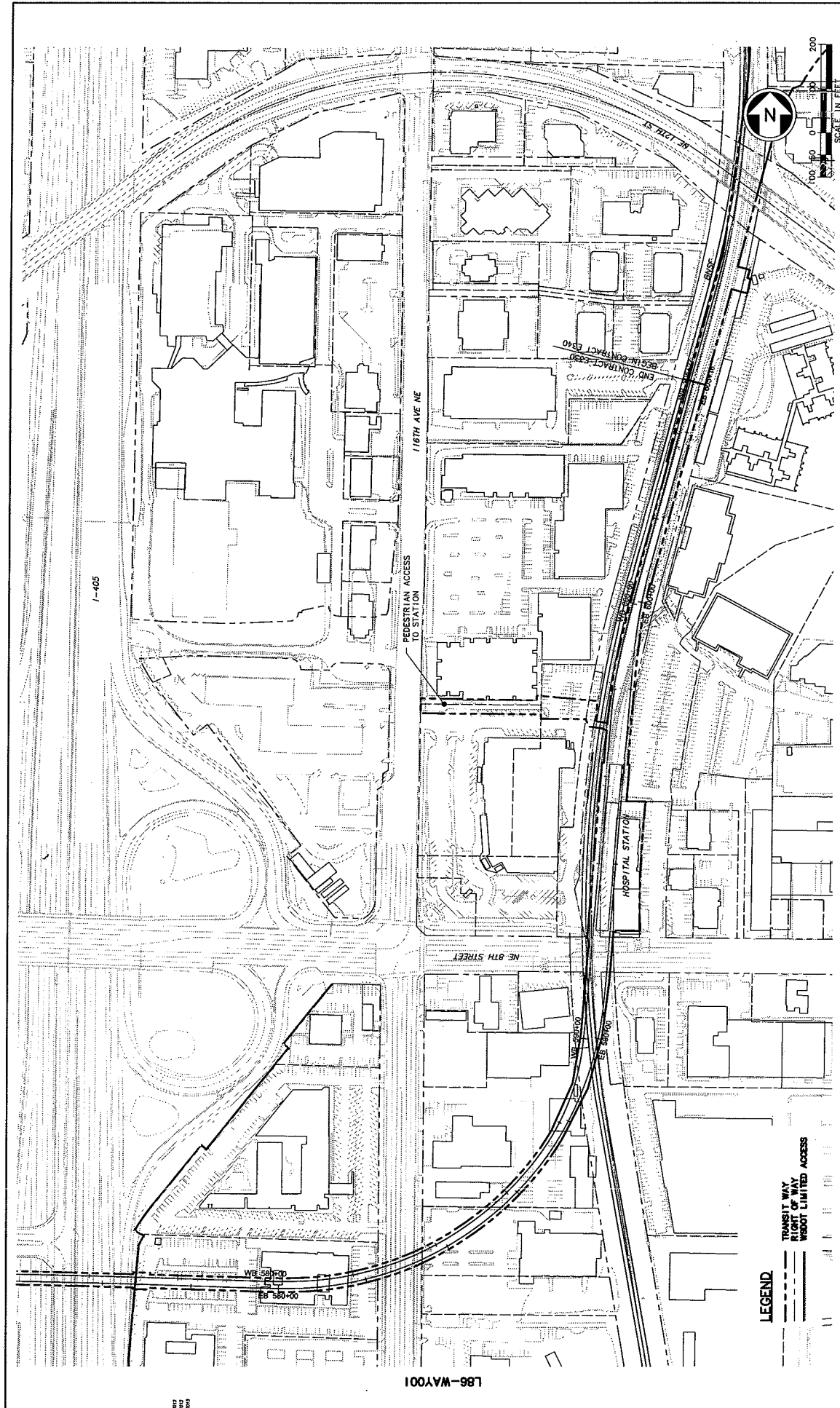
SEE DWG L85-WAY003

LEGEND
 TRANSIT WAY
 RIGHT OF WAY
 WITHOUT LIMITED ACCESS

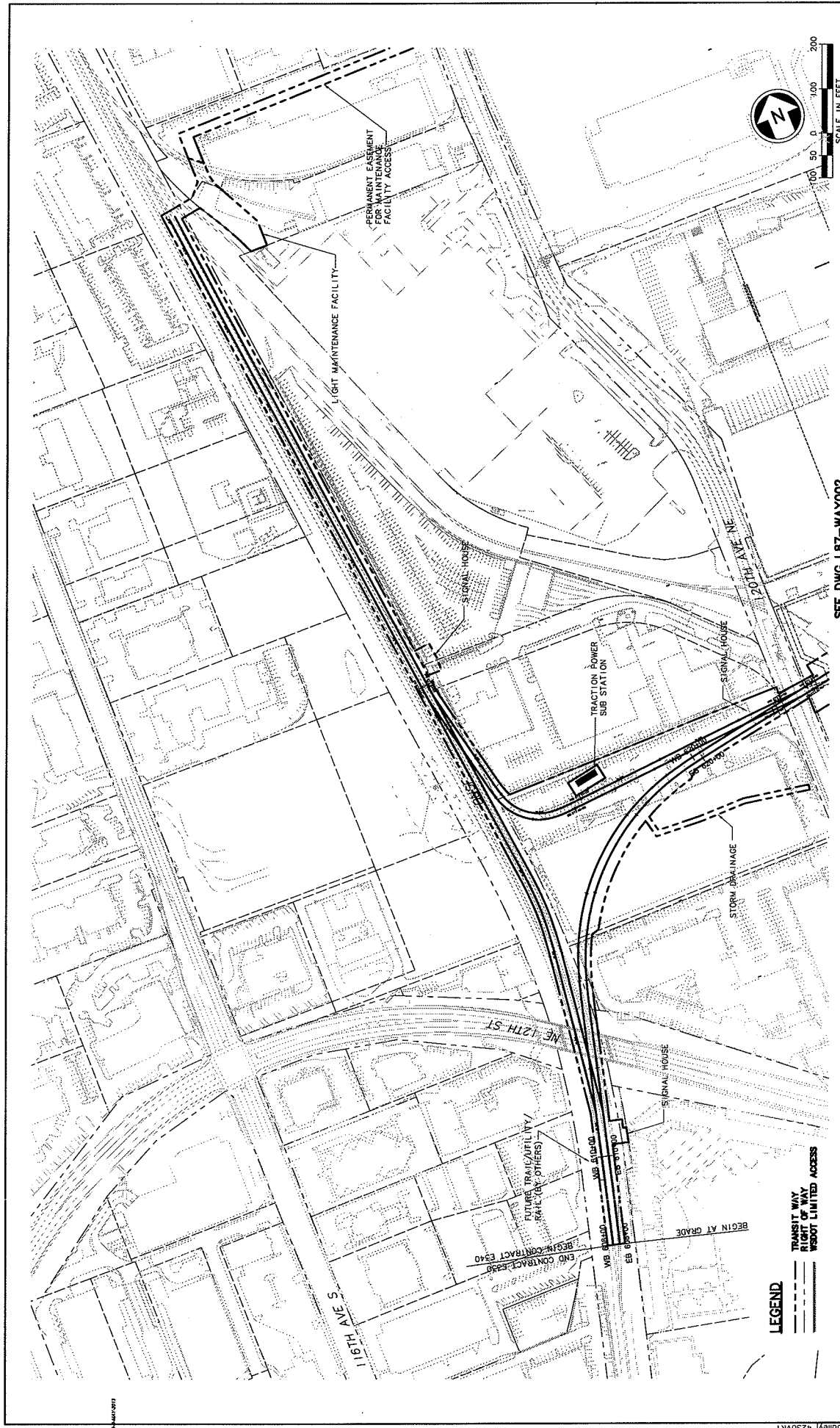
Drawing No. L85-WAY002		Revision No. 2	
LINK LIGHT RAIL PROJECT EAST CORRIDOR SEGMENT B TRANSIT WAY EXHIBIT (BASED ON CURRENT DESIGN FILES AS OF MAY 15TH, 2013)			
Scale: H: 1" = 100' E: 20' L85-WAY002.dwg Contract No.	Date: 05/15/13	Submitted:	Reviewed:
		Date:	Approved By:
Design By:	Drawn By:	Checked By:	Approved By:
Date:	Date:	Date:	Date:
Date:	Date:	Date:	Date:
Date:	Date:	Date:	Date:
Date:	Date:	Date:	Date:



Drawing No. L85-WAY004 Sheet No. 4	
LINK LIGHT RAIL PROJECT EAST CORRIDOR SEGMENT B TRANSIT WAY EXHIBIT (BASED ON CURRENT DESIGN FILES AS OF MAY 15TH, 2013)	
Scale: H: 1" = 100' Filename: E:\2013-L85-WAY004.dwg Content No.: Date: 05/15/13	Date: Submittal: Reviewer: Date: Approved By:
	SOUND TRANSIT TRANSIT AUTHORITY 400 THURSTON ST SEATTLE, WA 98104
Design By: Drawn By: Checked By: Approved By:	Date: Date: Date: Date:
No. Date 1 2 3 4	Date Date Date Date



Drawing No. L86-WAY002 Revision: 7	
LINK LIGHT RAIL PROJECT EAST CORRIDOR SEGMENT C TRANSIT WAY EXHIBIT (BASED ON CURRENT DESIGN FILES AS OF MAY 15TH, 2013)	
Scale: H: 1" = 100' Filename: E:\30_L86_WAY002.dwg Contract No.	Date: 05/15/13
Designed By: Drawn By: Checked By: Approved By:	Date: Date: Date: Date:
L86-WAY001	



SEE DWG L87-WAY002

Drawing No.	L87-WAY001	Scale	H: 1" = 100'
Sheet No.	8	Contract No.	E-40, L87, WAY001.dwg
Revision No.		Date	05/15/13

SOUNDTRANSIT

**LINK LIGHT RAIL PROJECT
EAST CORRIDOR
SEGMENT D
TRANSIT WAY EXHIBIT
(BASED ON CURRENT DESIGN FILES
AS OF MAY 15TH 2013)**

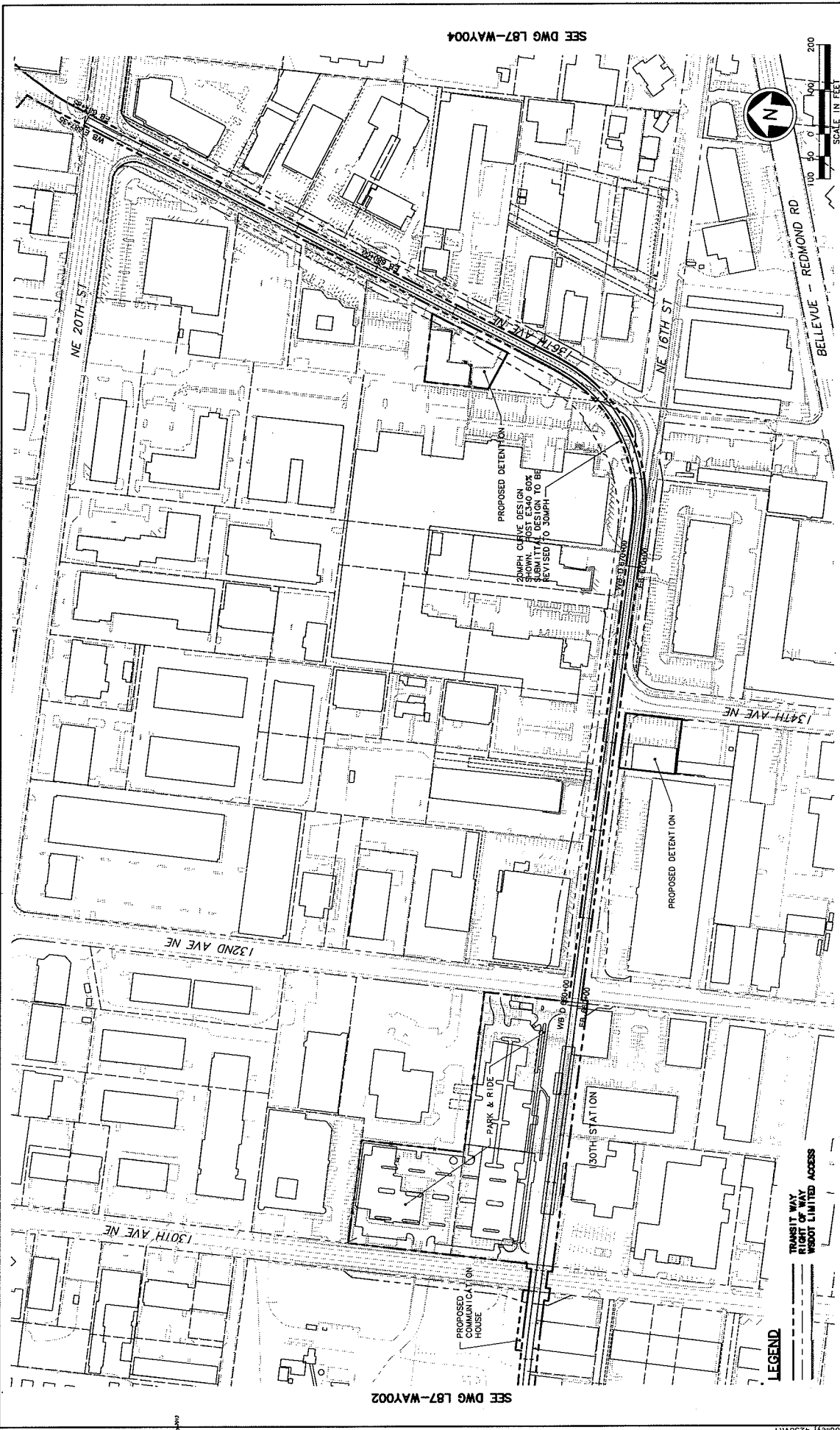
Designed By:	Drawn By:	Checked By:	Approved By:

No.	Date	Des.	Chk.	App.	Revisions

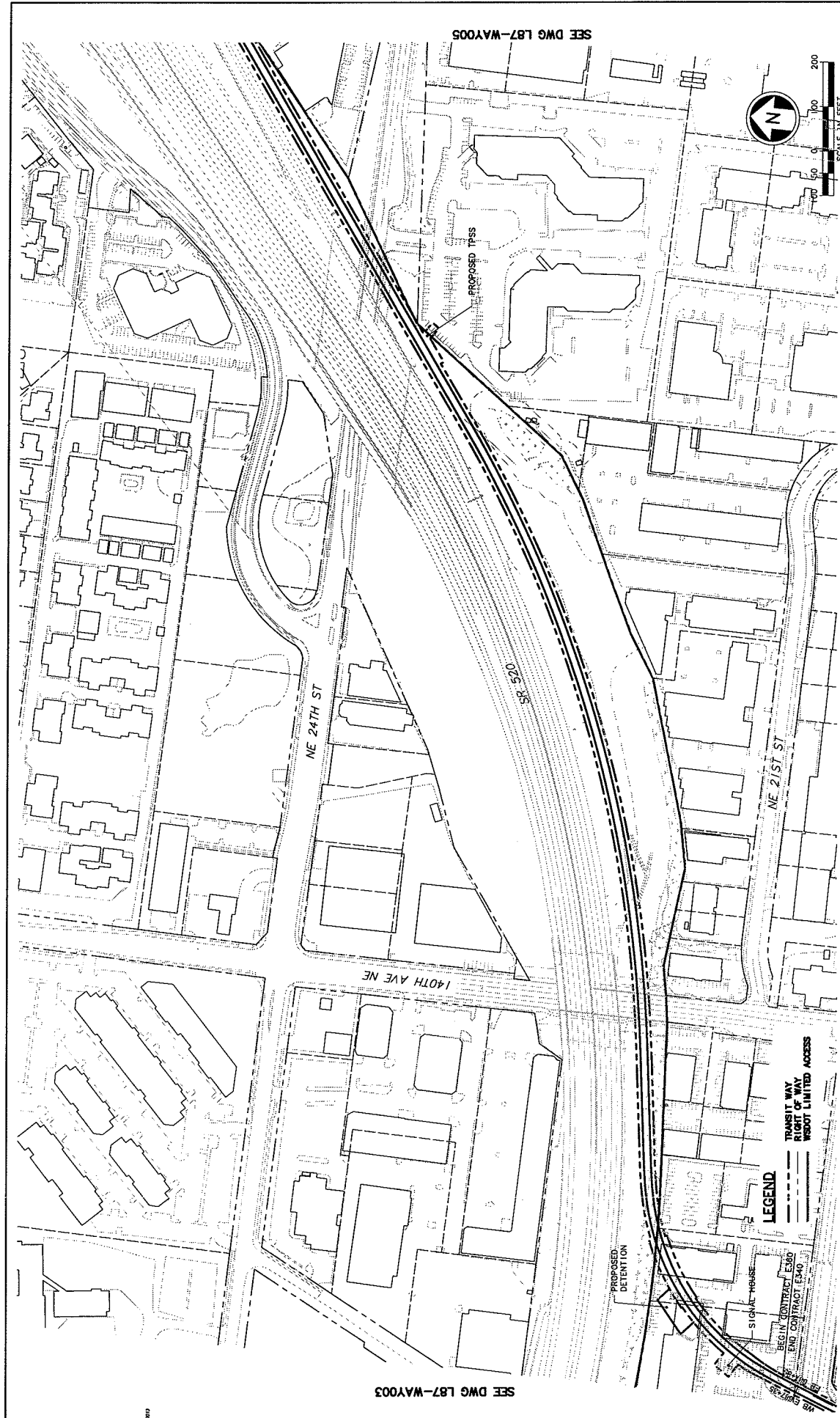
LEGEND

- TRANSIT WAY
- RIGHT OF WAY
- LIMITED ACCESS

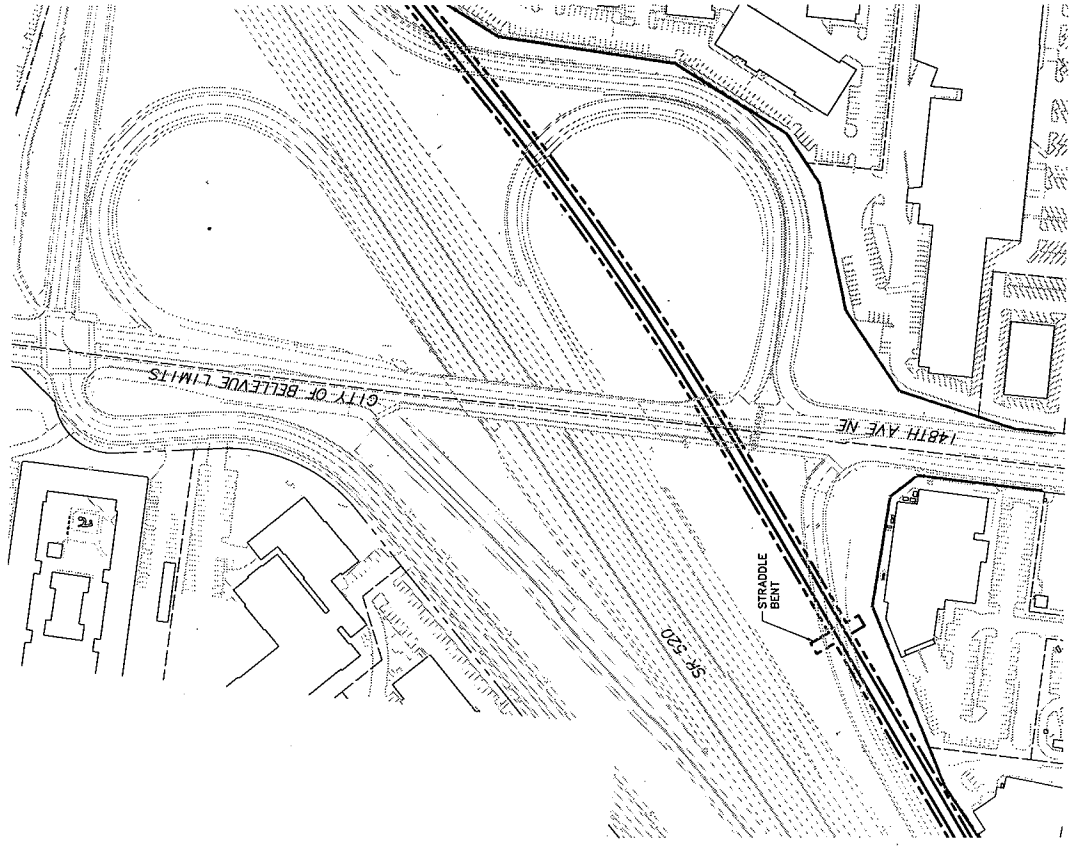
1
 2
 3
 4



Drawing No. L87-WAY003 Sheet No. 10 Rev No.	
LINK LIGHT RAIL PROJECT EAST CORRIDOR SEGMENT D TRANSIT WAY EXHIBIT (BASED ON CURRENT DESIGN FILES AS OF MAR 15TH, 2013)	
Scale: H: 1" = 100' Filename: E340_L87_WAY003 Contract No.	Date: 05/15/13
DEVELOPED BY: [Blank] DRAWN BY: [Blank] CHECKED BY: [Blank] APPROVED BY: [Blank]	
No. Date Des. Cks. App. Revisions	



Drawing No. L87-WAY004		Scale: H: 1" = 100' Project: E640, L87-WAY004 Contract No.: Date: 05/15/13	
Link Light Rail Project EAST CORRIDOR SEGMENT D TRANSIT WAY EXHIBIT (BASED ON CURRENT DESIGN FILES AS OF MAY 15TH, 2013)		Date: 05/15/13	
Designer By: Drawn By: Checked By: Approved By:		Date: Date: Date: Date:	
No. Date Des. Chk. L&D. E&C&S		SUBMITTED FOR REVIEW DATE:	



SEE DWG L87-WAY004

LEGEND
 --- TRANSIT WAY
 --- RIGHT OF WAY
 --- LIMITED ACCESS

Drawing No. L87-WAY005 Sheet No. 12	
LINK LIGHT RAIL PROJECT EAST CORRIDOR SEGMENT D TRANSIT WAY EXHIBIT (BASED ON CURRENT DESIGN FILES AS OF MAY 15TH, 2013)	
Scale: H: 1" = 100' Filename: E340_L87-WAY005 Contract No.: Date: 05/15/13	
Date: 05/15/13 Submitted:	Date:
Designed By: Drawn By: Checked By: Approved By:	Date: Date: Date: Date:
No. Date Dwn Chk App Revisions	

1
 2
 3
 4
 5
 6
 7
 8
 9
 10
 11
 12
 13
 14
 15
 16
 17
 18
 19
 20
 21
 22
 23
 24
 25
 26
 27
 28
 29
 30
 31
 32
 33
 34
 35
 36
 37
 38
 39
 40
 41
 42
 43
 44
 45
 46
 47
 48
 49
 50
 51
 52
 53
 54
 55
 56
 57
 58
 59
 60
 61
 62
 63
 64
 65
 66
 67
 68
 69
 70
 71
 72
 73
 74
 75
 76
 77
 78
 79
 80
 81
 82
 83
 84
 85
 86
 87
 88
 89
 90
 91
 92
 93
 94
 95
 96
 97
 98
 99
 100

Exhibit B - 1: General Description of Light Rail Alignment, Station Locations, and Facilities

Segment B: South Bellevue (I-90 to SE 6th Street)

Route:

Elevated Structure from I-90 to north of the South Bellevue Park-and-Ride on the east side of S Bellevue Way

Retained cut from north of the South Bellevue Park-and-Ride to the intersection of S Bellevue Way and 112th Ave SE on the east side of S Bellevue Way and 112th Ave SE. The retained cut is lidded in front of the Winters House and at the driveway to the Winters House parking lot

At-grade from the intersection of S Bellevue Way and 112th Ave SE to SE 6th Street crossing from the east side of 112th Ave SE to the west side at SE 15th Street with 112th Ave SE raised over the light rail crossing.

Station/Facility Locations:

South Bellevue Station (elevated) and park-and-ride structure at the South Bellevue Park-and-Ride

Traction power substation and signal house on east side of Bellevue Way at SE 30th Street

Segment C: Downtown Bellevue (SE 6th Street to BNSF Railway Corridor)

Route:

At grade on the west side of 112th Ave SE from SE 6th Street with SE 4th closed, except for emergency access, turning west onto the south side of Main Street with SE 1st closed

Tunnel portal on south side of Main Street, west of 112th Ave SE

Tunnel from west of 112th Ave SE to NE 6th Street under Main Street and 110th Ave NE

Tunnel portal on the south side of NE 6th Street, west of 112th Ave NE

Elevated structure on the south side of NE 6th from west of 112th Ave NE to the BNSF Railway Corridor, crossing over 112th Ave NE, I-405, 116th Ave NE, the future extension of NE 6th Street and NE 8th Street

Station/Facility Locations:

East Main Station (at-grade) on the west side of 112th Ave SE south of Main Street

Bellevue Transit Center Station on the south side of NE 6th Street with entrances near 110th Avenue NE and from the NE 6th street right-of-way near 112th Avenue NE

Hospital Station (elevated) in the BNSF Railway Corridor north of NE 8th Street

Traction power substation and signal house near the southwest corner of Main Street and 112th Ave SE

Segment D: Downtown Bellevue to Overlake Transit Center (BNSF Railway Corridor to 148th Ave NE)

Route:

Elevated Structure from the Hospital Station, transitioning to at-grade in the BNSF Railway Corridor

Retained cut from east of the BNSF Railway Corridor to west of the West Tributary of Kelsey Creek, crossing under 120th Ave NE and 124th Ave NE

Elevated from east of 124th Ave NE to west of 130th Ave NE, crossing over the West Tributary of Kelsey Creek

At-grade from west of 130th Ave NE to SR 520 west of 140th Ave NE, at-grade crossings at 130th Ave NE, 132nd Ave NE, 134th Ave NE, 136th Ave NE, and NE 20th Ave

At-grade and Elevated along the south side of SR 520 from west of 140th Ave NE to 148th Ave NE (Bellevue City Limits).

Station/Facility Locations:

120th Station (retained cut, subject to funding agreement with the property owner) between 120th Ave NE and 124th Ave NE

130th Station (at-grade) and park-and-ride lot between 130th Ave NE and 132nd Ave NE

Traction power substation and signal house near the 120th Station

Traction power substation underneath the elevated guideway at NE 24th Street

Storage tracks for trains in the former BNSF corridor north of NE 12th Street with a light maintenance facility on the east side of the former BNSF corridor