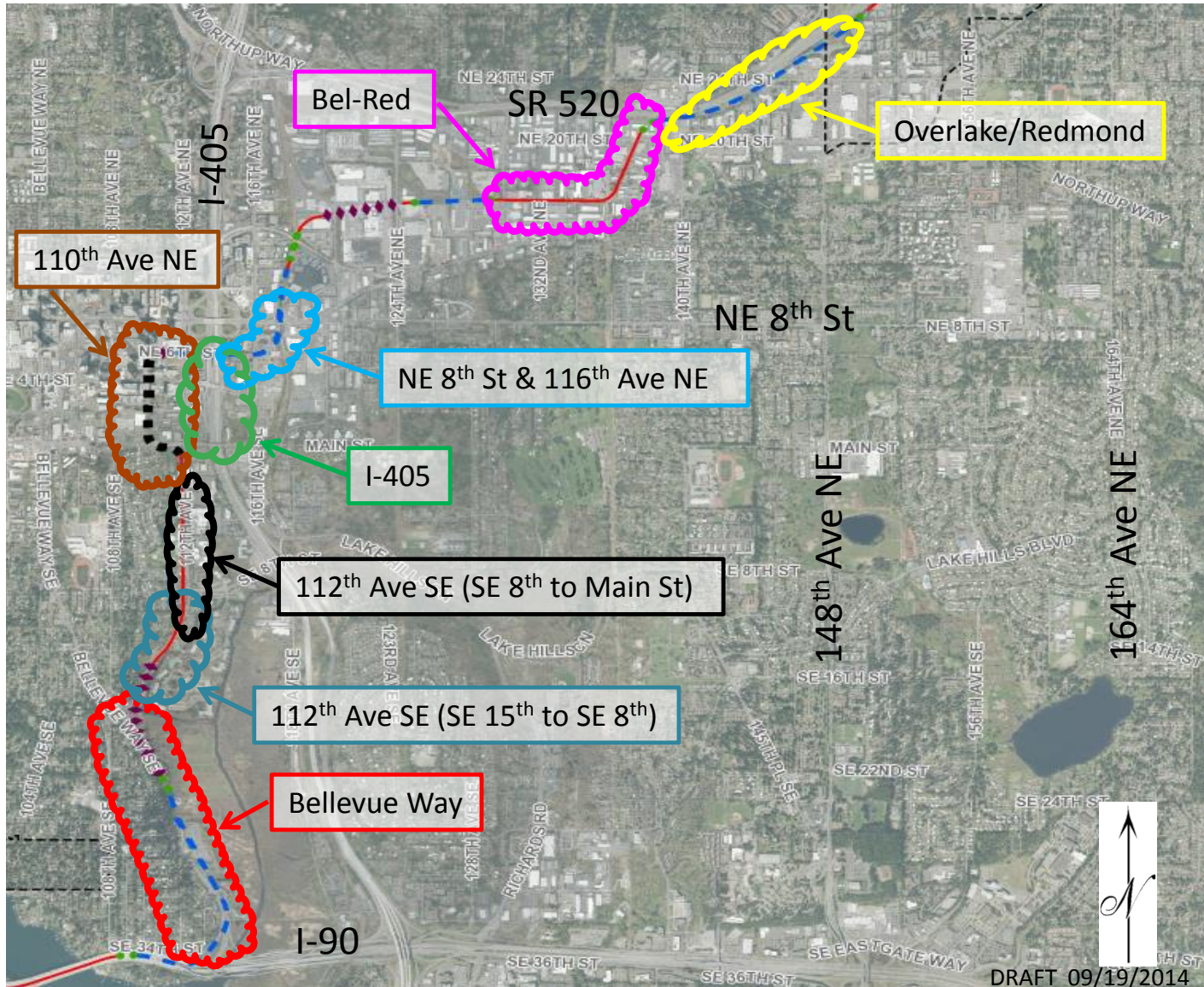


Maintenance of Traffic



Maintenance of Traffic

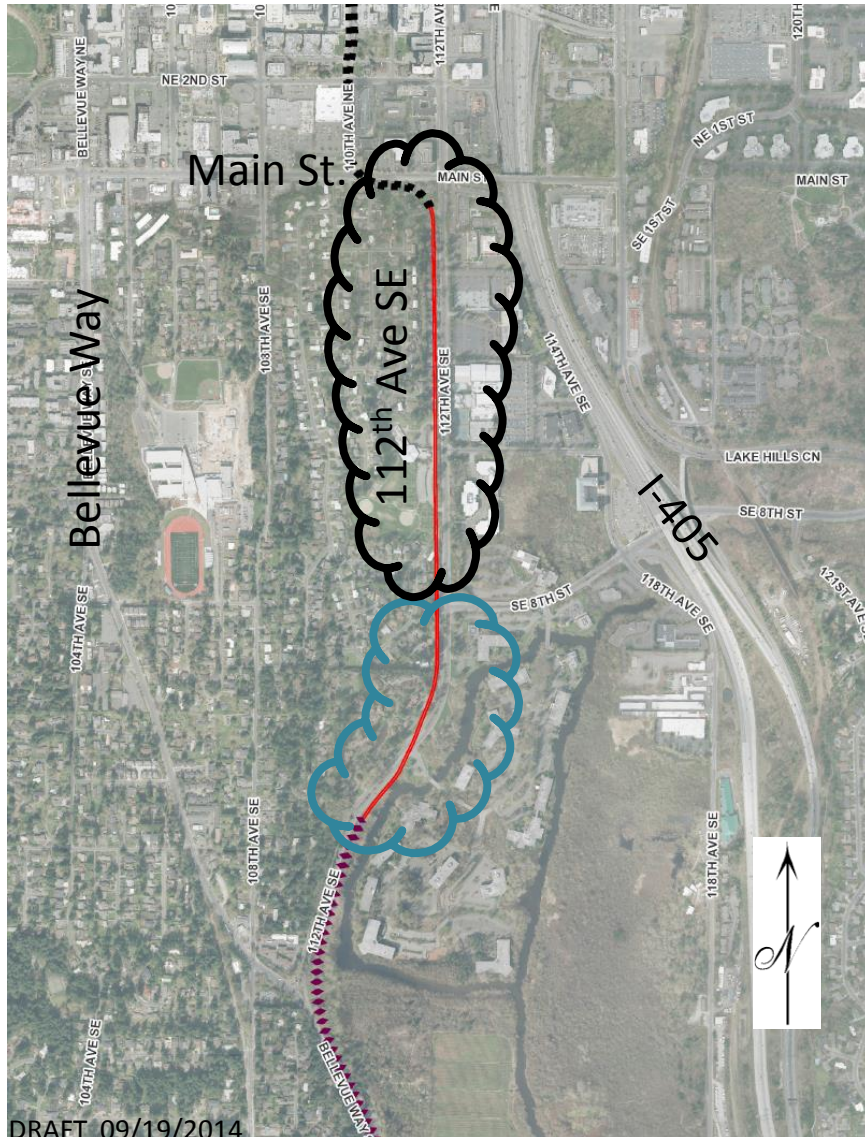


Bellevue Way – E320

Goal: Maintain 2 lanes of traffic in peak direction

- Park & Ride closed during construction (approximately 48 to 60 Months)
- 1 Lane each direction with a reversible lane (approximately 36 to 48 Months)
- 12 to 15 weekend full closures
- I-90 westbound night closures

Maintenance of Traffic



112th Ave SE (SE 15th to Se 8th) – E320

Goal: Minimize traffic diversion to 108th Ave SE and Bellevue Way

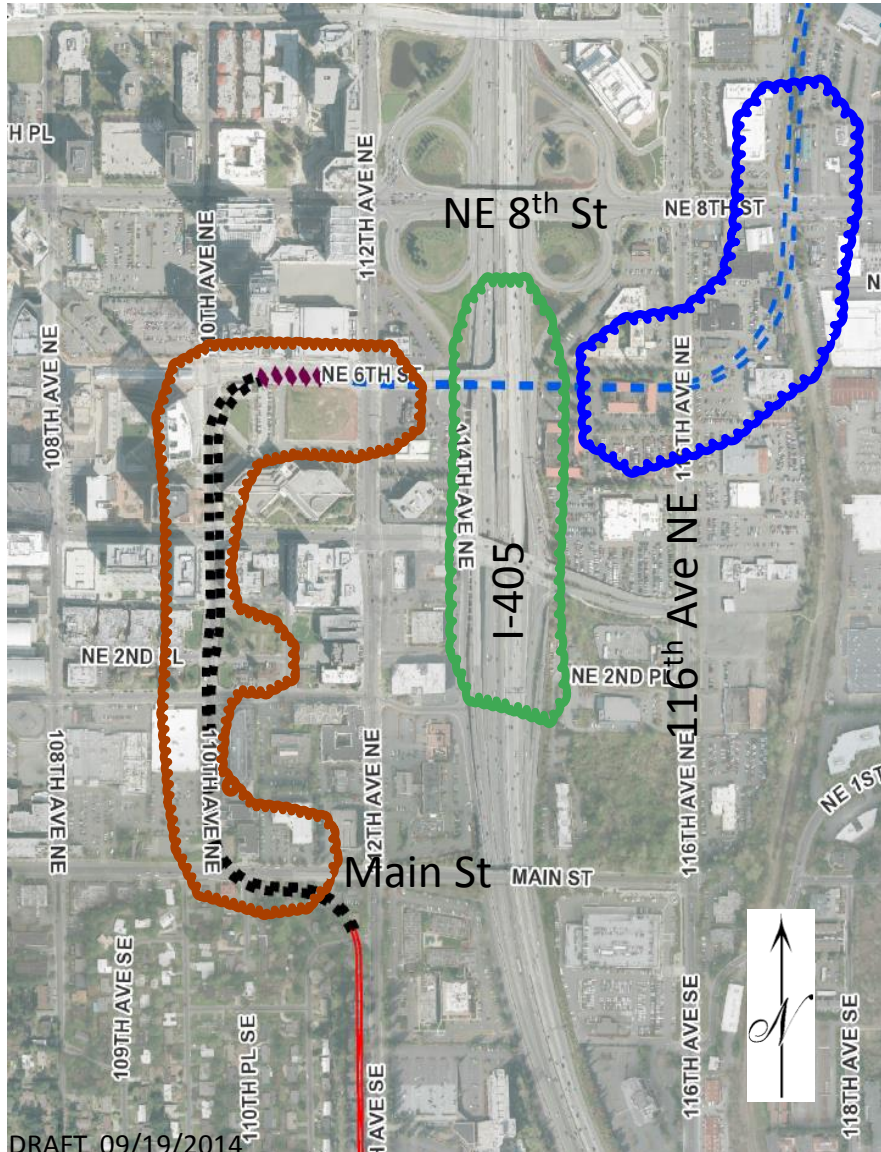
- Maintain 1 lane each direction during construction
- Temporary road 1 Lane each direction (18 months)

112th Ave SE (SE 8th to Main St) – E320

Goal: Minimize construction truck traffic

- Off-peak lane closures

Maintenance of Traffic



110 Ave NE – E 330/E335

Goal: Minimize impact to business access

- Two 1-month full closure of 110th Ave NE south of the intersection
- Two 3-month lane closures (NE 4th to NE 6th (considering total closure between City Center 2 and NE 6th)
- SB lanes from NE 2nd to NE 3rd closed for duration of construction
- NE 2nd PI closed for duration of construction

I-405 – E335

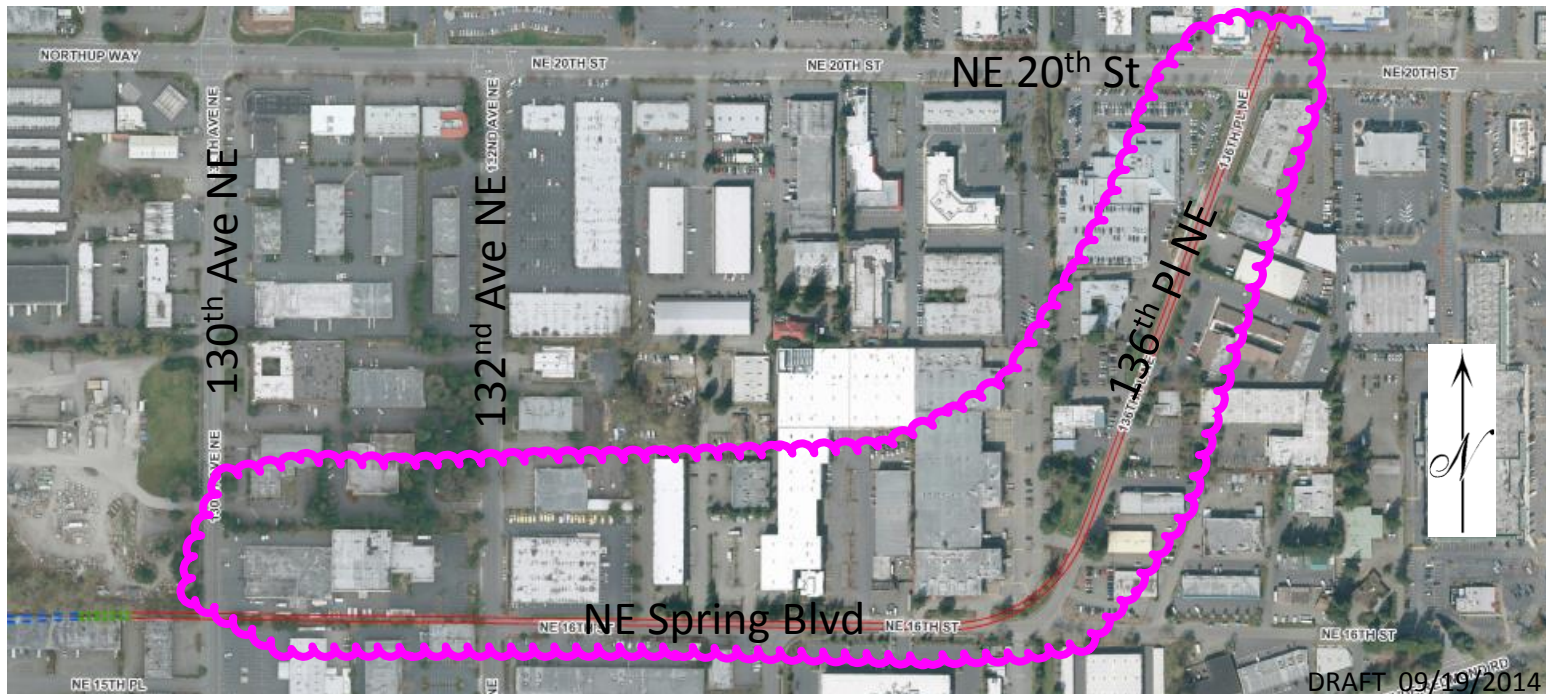
- Overnight HOV ramp closures
- Overnight lane closures

NE 8th St & 116th Ave NE – E335

Goal: Minimize impact to business access

- Overnight street closures
- Off-peak lane closures

Maintenance of Traffic



Bel-Red - E340

Goal: Minimize impact to businesses

- Lane closures on NE 20th, 130th, 132nd, 136th, and NE 16th (Spring Blvd.)
- Intersection closure @ NE 20th/136th PL NE, NE 16th St (Spring Blvd.)/132nd Ave. NE and NE 16th St (Spring Blvd.)/136th PL NE
- Overnight closures at various locations along NE 16th St (Spring Blvd.)
- Full closure on NE 16th St (Spring Blvd.) from 132nd to 136th PL NE (6 to 9 Months)
- Full closure on 136th PI NE from NE 16th St (Spring Blvd.) to NE 20th St (One Month)
 - Advanced Utility Relocation (4 to 6 weeks)

Maintenance of Traffic



Overlake/Redmond – E360

- Overnight Street/Lane Closures