

# NEIGHBORHOOD

## *SAFETY, CONNECTIVITY AND CONGESTION LEVY*



# Program Overview and Project Update

Dave Berg    Transportation Department Director  
Marie Jensen    Levy Co-Manager  
John Murphy    Levy Co-Manager  
*Transportation Department*

Sep. 17, 2018

# Agenda

- Levy background
- 2017-2018 Project updates
- 2019-2020 Project selection
- Levy communications

**Purpose of tonight's presentation is for information only; no action or direction is sought**

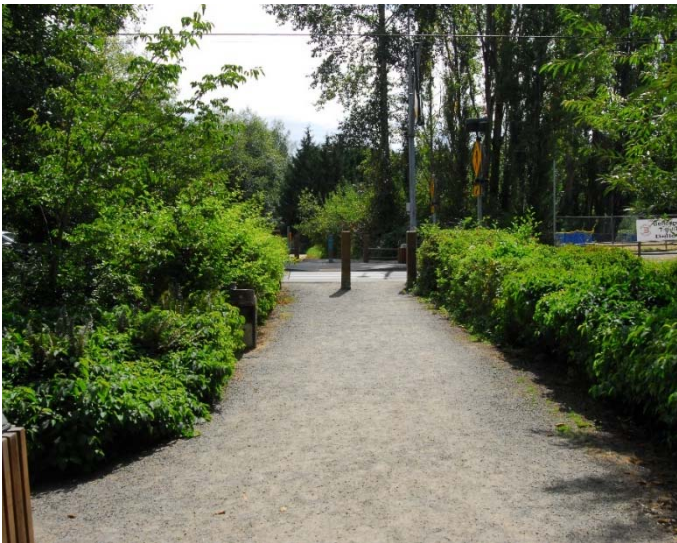
# Levy Background

- Voter-approved (2016)
- 20-year levy on property value
- Helps to do more of what we already do
- Funding covers project outreach, planning, design and construction
- Leverage other funding sources



## What the levy funds

- Crosswalks
- Bike lanes
- Maintenance
- Traffic technology
- Sidewalks
- Traffic calming
- Street lightings
- Signals
- Turn lanes
- Radar signs
- More

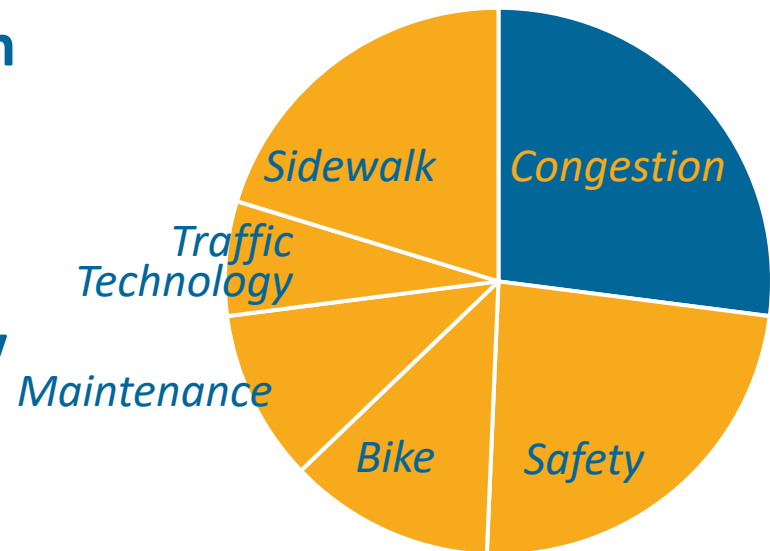




# Neighborhood Safety, Connectivity Levy \$7.4 million/year

**Neighborhood  
Congestion Reduction**  
\$2 million/year

**Safety & Connectivity  
Projects**  
\$5.4 million/year



# Project development

- Levy projects originate from existing work programs (except for congestion)
- Transportation Commission Involvement
  - Evaluation criteria
  - Program development
  - Plan development
  - Updates
- City Council Involvement
  - Adoption of plans and programs
  - Updates

# 2017-2018 Projects

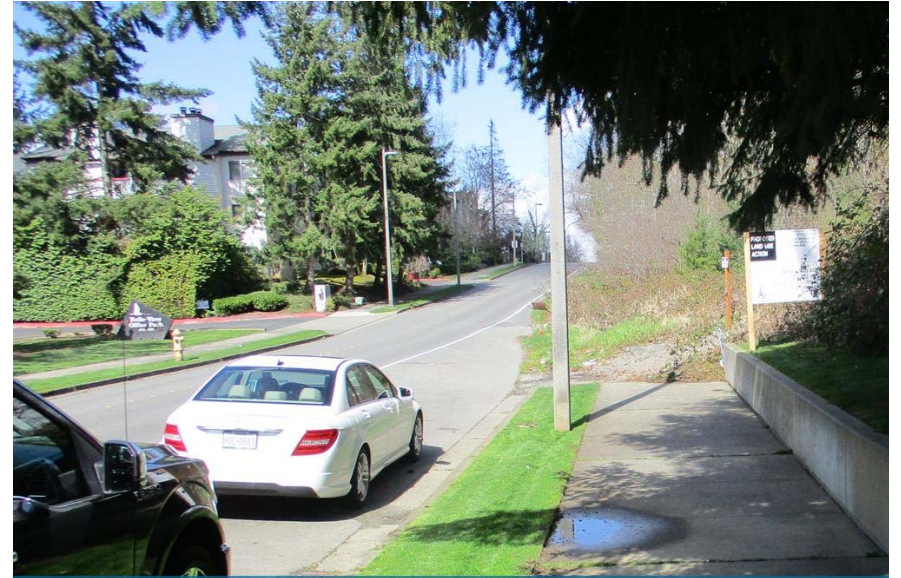
- Substantial progress
  - End of 2018: \$6.2 million in projects complete or in construction
- Continue to advance projects into 2019

Current Phase	# Of Projects*
Concept	8
Planning	4
30% Design	4
60% Design	2
90/100% Design	4
Construction	8
Complete	13

\* As of 9/10/18



NE 24<sup>th</sup> Bike Lane Project-before



118<sup>th</sup> Ave SE Sidewalk-before



NE 24<sup>th</sup> Bike Lane Project-after



118<sup>th</sup> Ave SE Sidewalk-during



# Community input

- Existing program channels
- Neighborhood Enhancement Program
- Anticipated: Neighborhood Area Planning
- Community input involved throughout project lifecycle including scoping

[bellevuewa.gov/transportationlevy](http://bellevuewa.gov/transportationlevy)  
[transportationlevy@bellevuewa.gov](mailto:transportationlevy@bellevuewa.gov)



# Evolving program

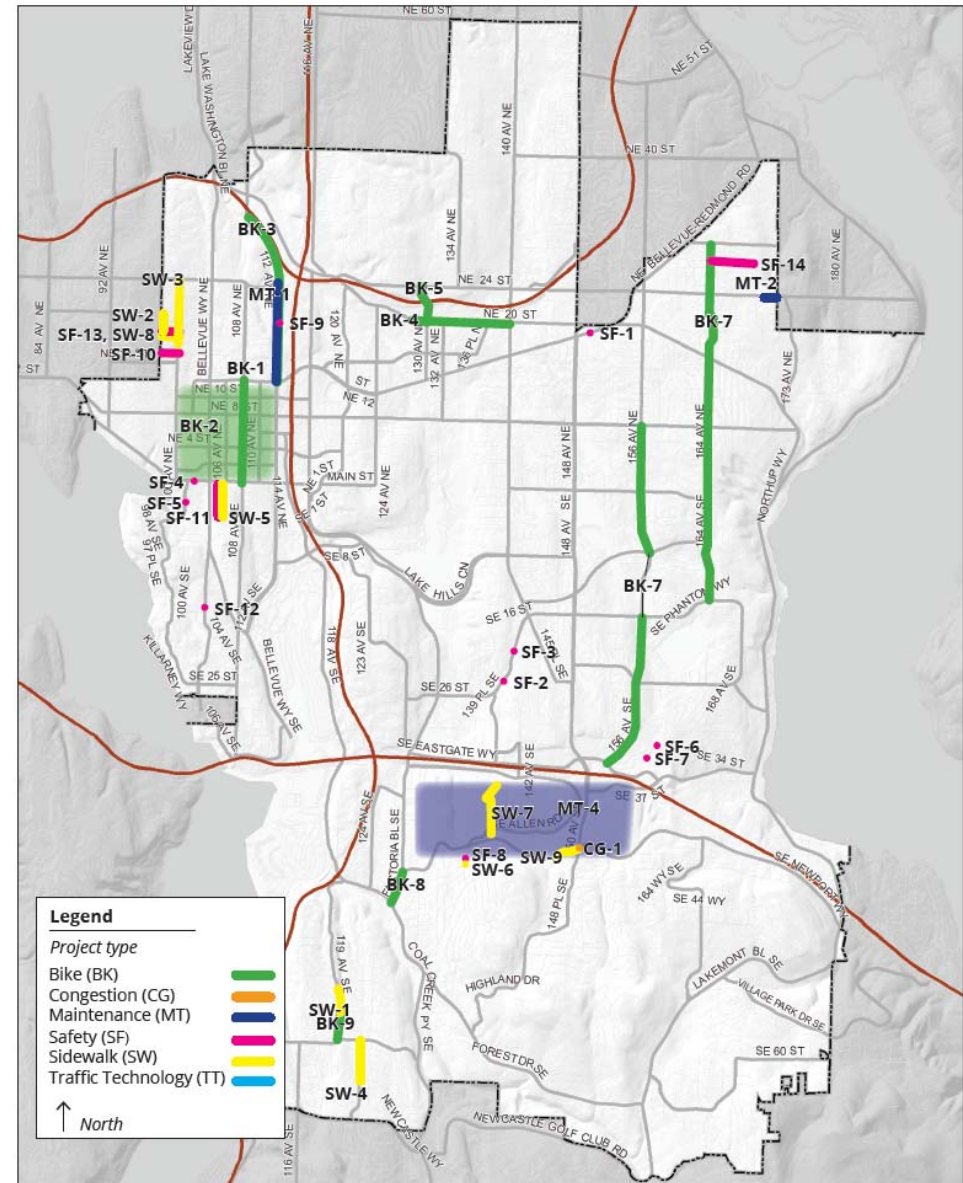
- Small projects, small cost but...
  - substantial outreach
  - design complexity
  - construction competition
- Flexibility needed



# 2019-2020 Projects

- Project backlogs
- Projects consistent with what voters approved
- Category allocation levels adjusted (still \$7.4 million/year total)

2019-2020 Neighborhood Safety, Connectivity and Congestion Levy Projects



Citywide projects: BK-6, BK-10, CG-2, G-3, G-4, MT-3, TT-1, TT-2, T-3, TT-4, TT-5

Last updated: 9/4/18

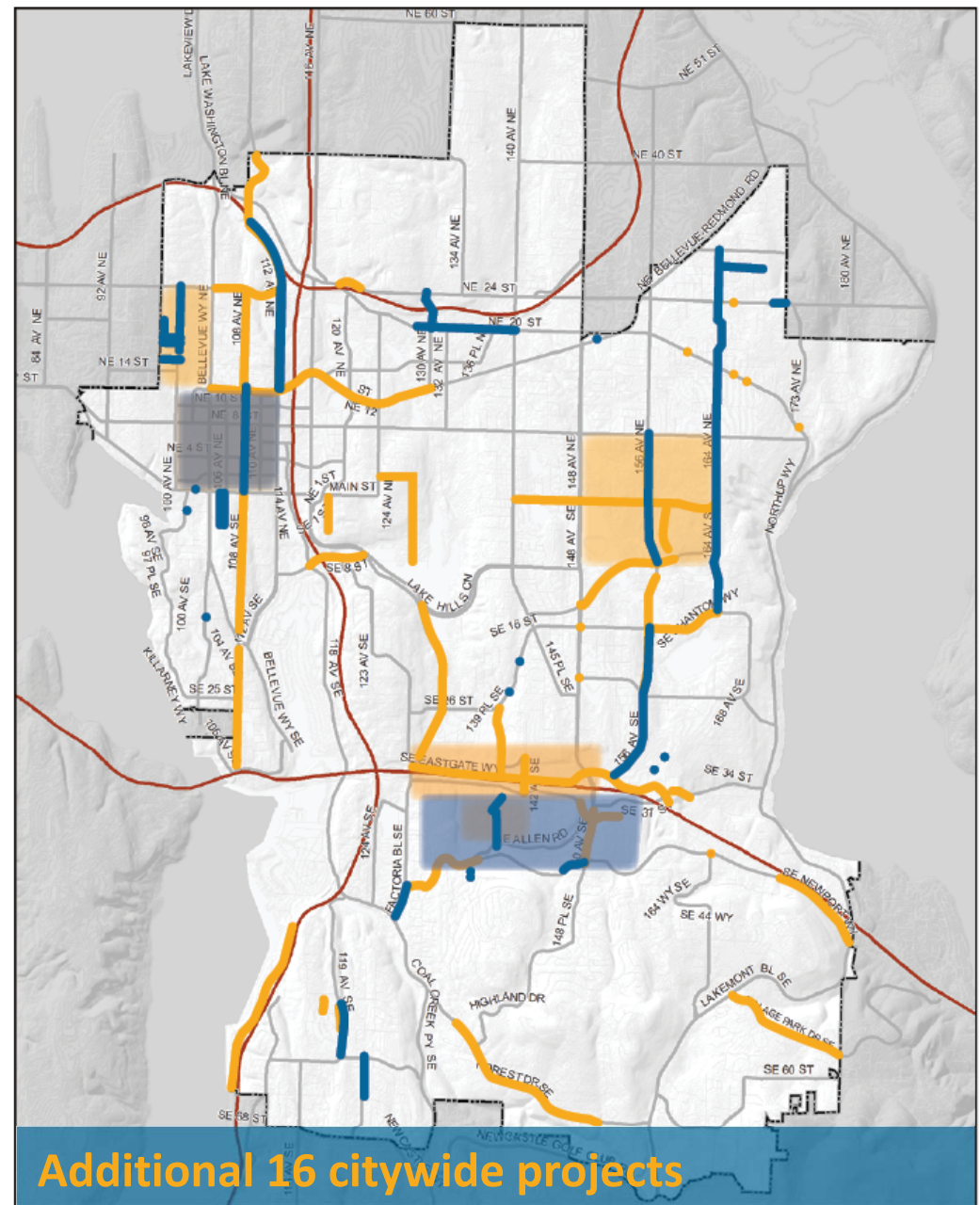
# 2017-2020 Projects

- Levy-funded projects in every neighborhood
- 90+ projects

2017-2018 project



2019-2020 project



# 2019-2020 Project Themes

- Continue to identify congestion projects; construction of 150<sup>th</sup>/Newport Way
  - Neighborhood Congestion Reduction Program to come back to Council in mid-2019
- Leveraging grants and other funding sources
- Continue downtown and other neighborhood bike improvements
- Finish work identified in 2017 by community
- Intersection improvements

# Communications

## Neighborhood Safety, Connectivity, and Congestion Levy Projects

A Story Map    

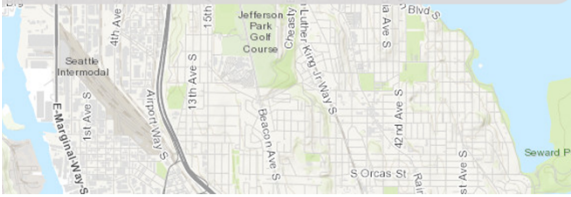
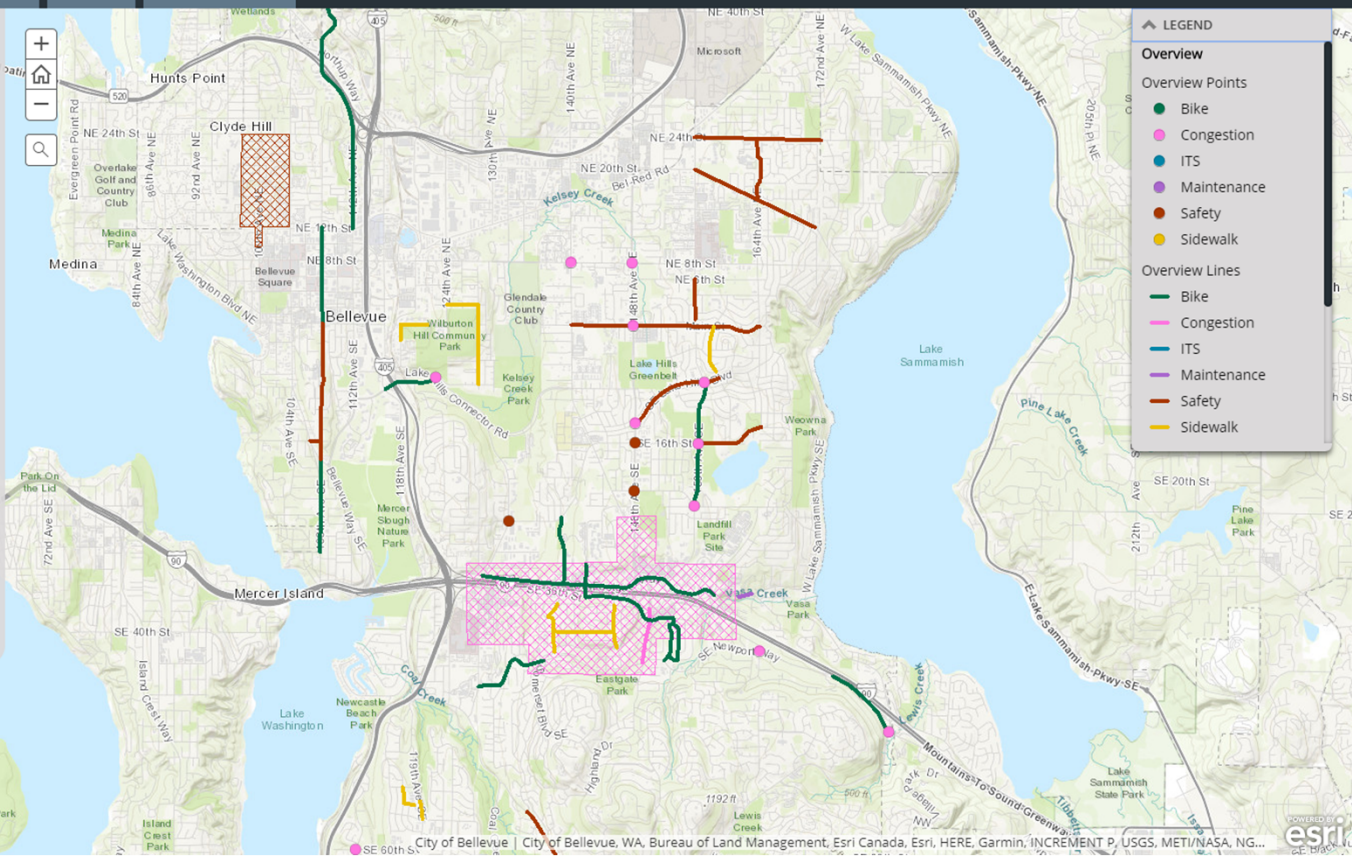
- Overview
- Bike
- Congestion
- Traffic Technology
- Maintenance
- Safety
- Sidewalks
- Completed Projects



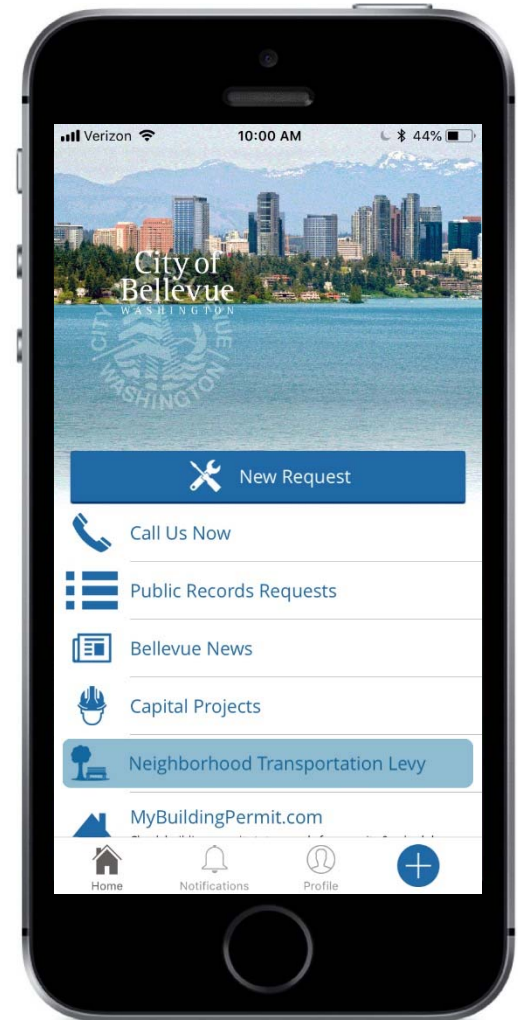
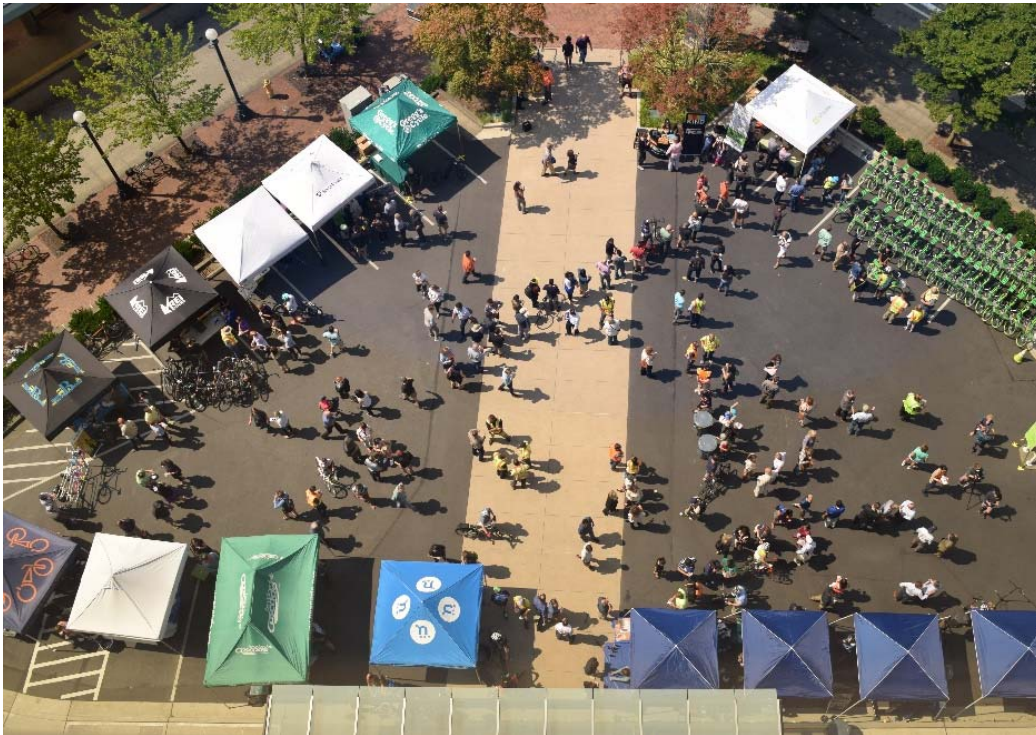
In 2016, Bellevue voters approved the 20-year ["Neighborhood Safety, Connectivity, and Congestion Levy."](#) The Levy provides funding to support existing transportation neighborhood programs and a new program aimed at easing motor vehicle congestion in neighborhoods. Levy funding supports the planning, design, construction and public outreach associated with selected levy-funded projects. Funding accelerates the city's ability to deliver more projects and services that Bellevue residents expect including:

- Building neighborhood sidewalks, trails and pathways ([sidewalks](#));
- Installing traffic calming and crosswalk enhancements within neighborhoods and near schools ([safety](#));
- Advancing the city's Bicycle Rapid Implementation Plan ([bike](#));
- Enhancing traffic management technology ([traffic technology](#));
- Providing the ability to conduct more maintenance on sidewalks and boardwalk, including improvements to conform with Americans with Disabilities Act guidelines ([maintenance](#)); and
- Funding the newly created Neighborhood Congestion Reduction program ([congestion](#)).

Please email [transportationlevy@bellevuewa.gov](mailto:transportationlevy@bellevuewa.gov) for more information.



# Communications



[bellevuewa.gov/transportationlevy](http://bellevuewa.gov/transportationlevy)  
[transportationlevy@bellevuewa.gov](mailto:transportationlevy@bellevuewa.gov)

# Summary

- Most projects started in 2017 expected to be completed in 2019
- Planning/design to start for 2019-2020 projects
- Neighborhood Congestion Reduction Program update in mid-2019
- Levy Annual Accountability Report in early 2019

## Neighborhood Safety, Connectivity and Congestion Levy





# Contact

- Website is great source for project information  
**[bellevuewa.gov/transportationlevy](http://bellevuewa.gov/transportationlevy)**
- Or contact staff:

Marie Jensen  
425-452-2064  
[mjensen@bellevuewa.gov](mailto:mjensen@bellevuewa.gov)

John Murphy  
425-452-6967  
[jmurphy@bellevuewa.gov](mailto:jmurphy@bellevuewa.gov)

**Purpose of tonight's presentation is for information only;  
no action or direction is sought**