

# East Main Citizen Advisory Committee

Transportation/Access

March 10, 2015



# Goals/Outcome

- Provide CAC members with a summary of existing conditions and future plans
- Discuss implications of light rail in the station area on non-motorized and vehicular networks
- CAC to provide direction to staff & consultants in developing ideas to address pedestrian & bicycle circulation as well as vehicular traffic issues (access, parking, cut-through traffic). Strategies to be refined by staff and by CAC at following meeting.

Station Area Planning addresses how the future station will be integrated into the surrounding neighborhood (Addressing construction issues are not the charge of the CAC)



# Non-Motorized Access and Circulation



# Outline

- Context
  - Existing Pedestrian and Bicycle Facilities
  - Existing Walkshed
- Planned Changes
  - Planned Pedestrian and Bicycle Projects
  - Future Walkshed
- Discussion
  - What we've heard
  - New ideas?

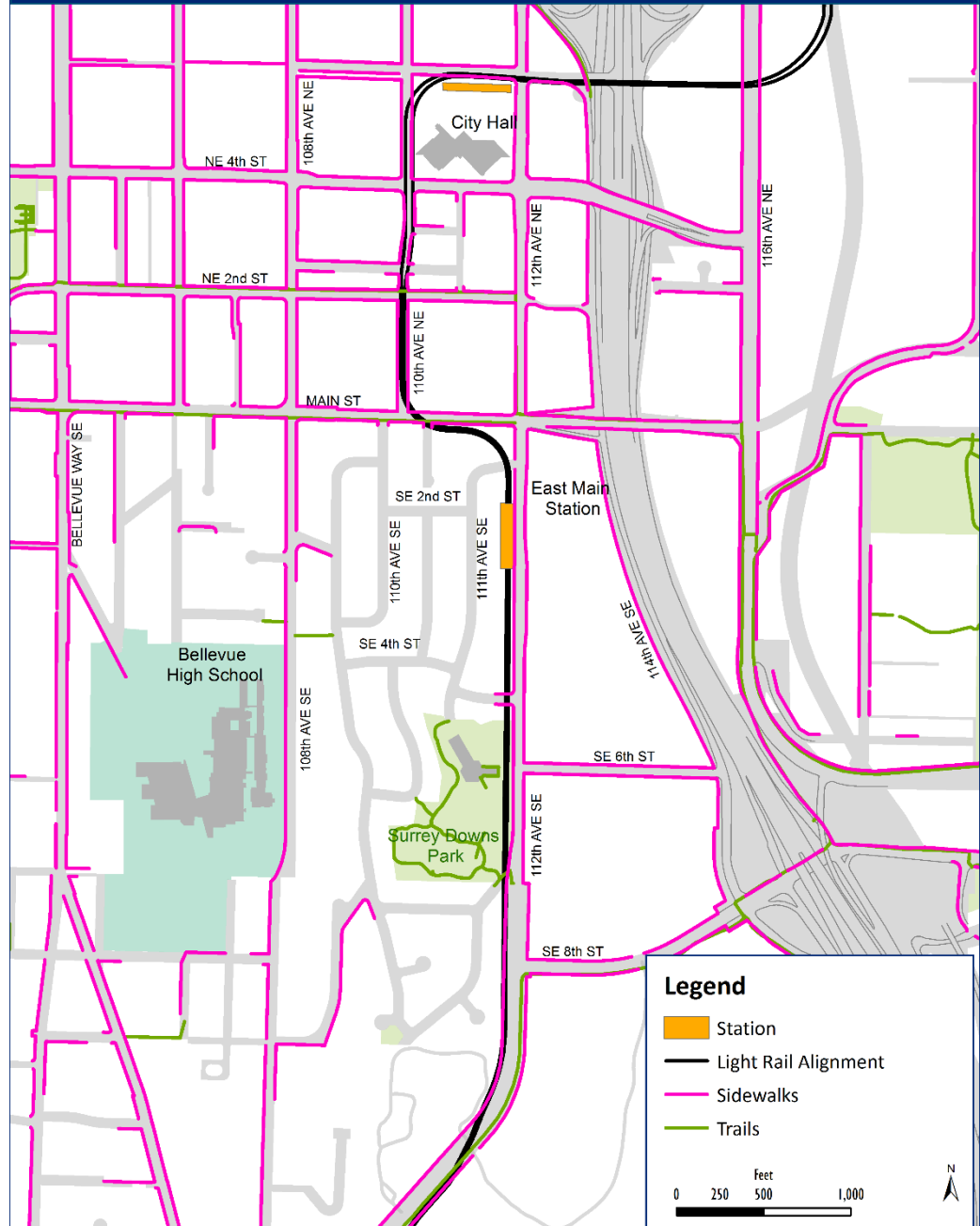


# Existing Conditions

## Pedestrian Network

- Sidewalks
- Trails

East Main Station Area - Existing Pedestrian Network

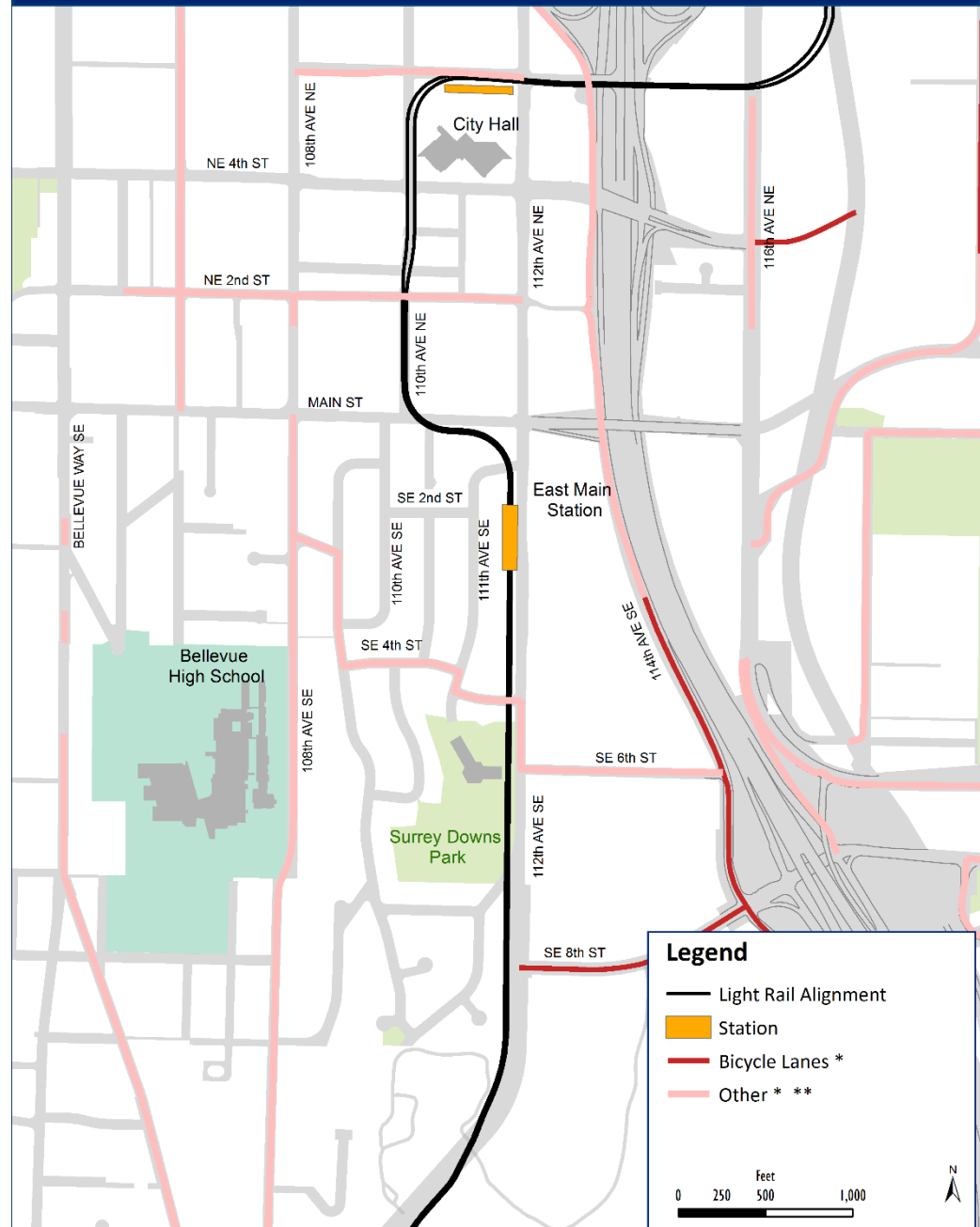


# Existing Conditions

## Bicycle Network

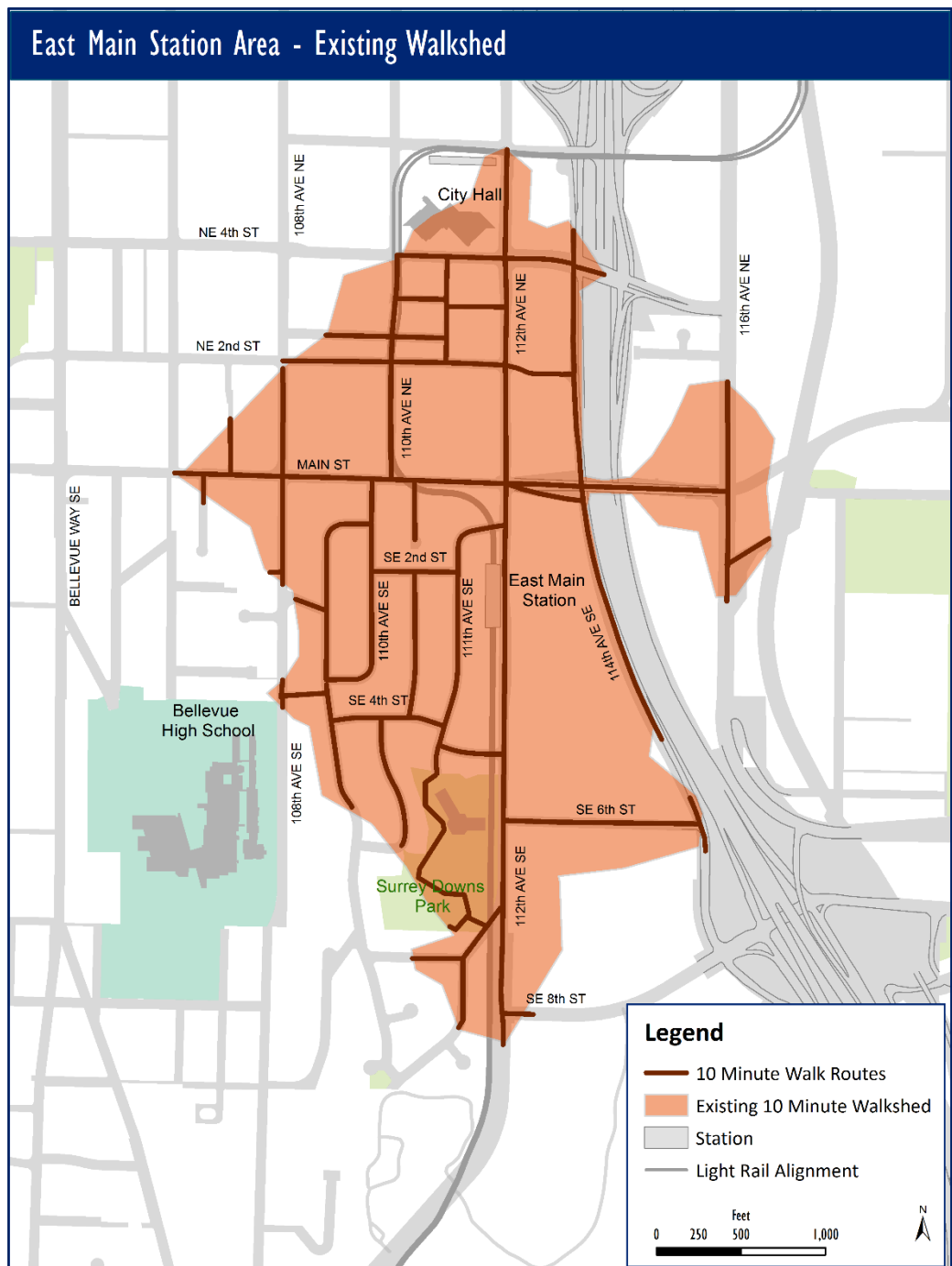
- Bicycle lanes
  - May only be one side of the street
- Other Bicycle Facilities
  - May include bicycle routes, shared roadways, wide shoulder

## East Main Station Area - Bicycle Facilities



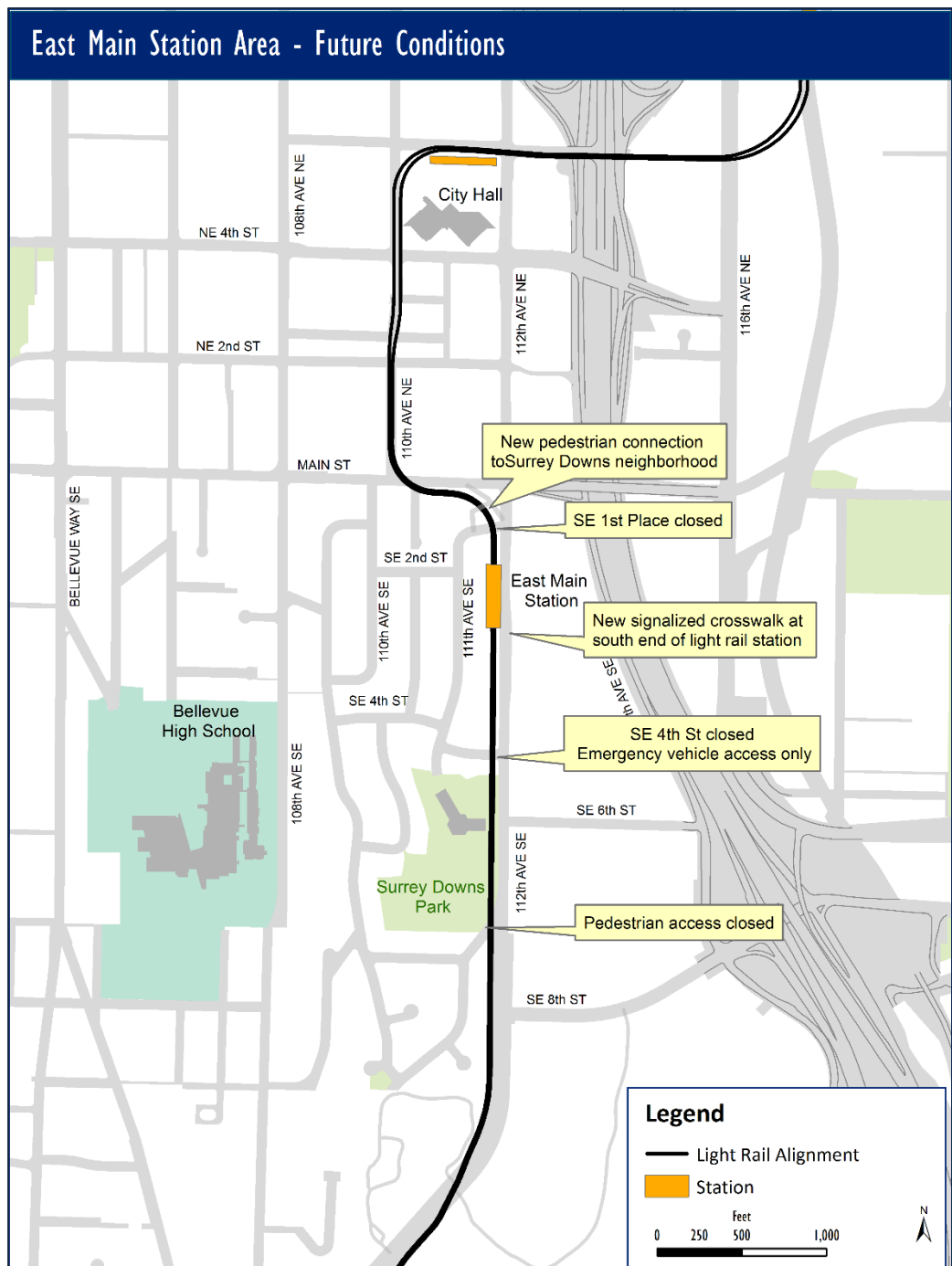
# Existing Walkshed

Areas that can be reached within a 10 minute walk from the East Main light rail station site



# Future Conditions

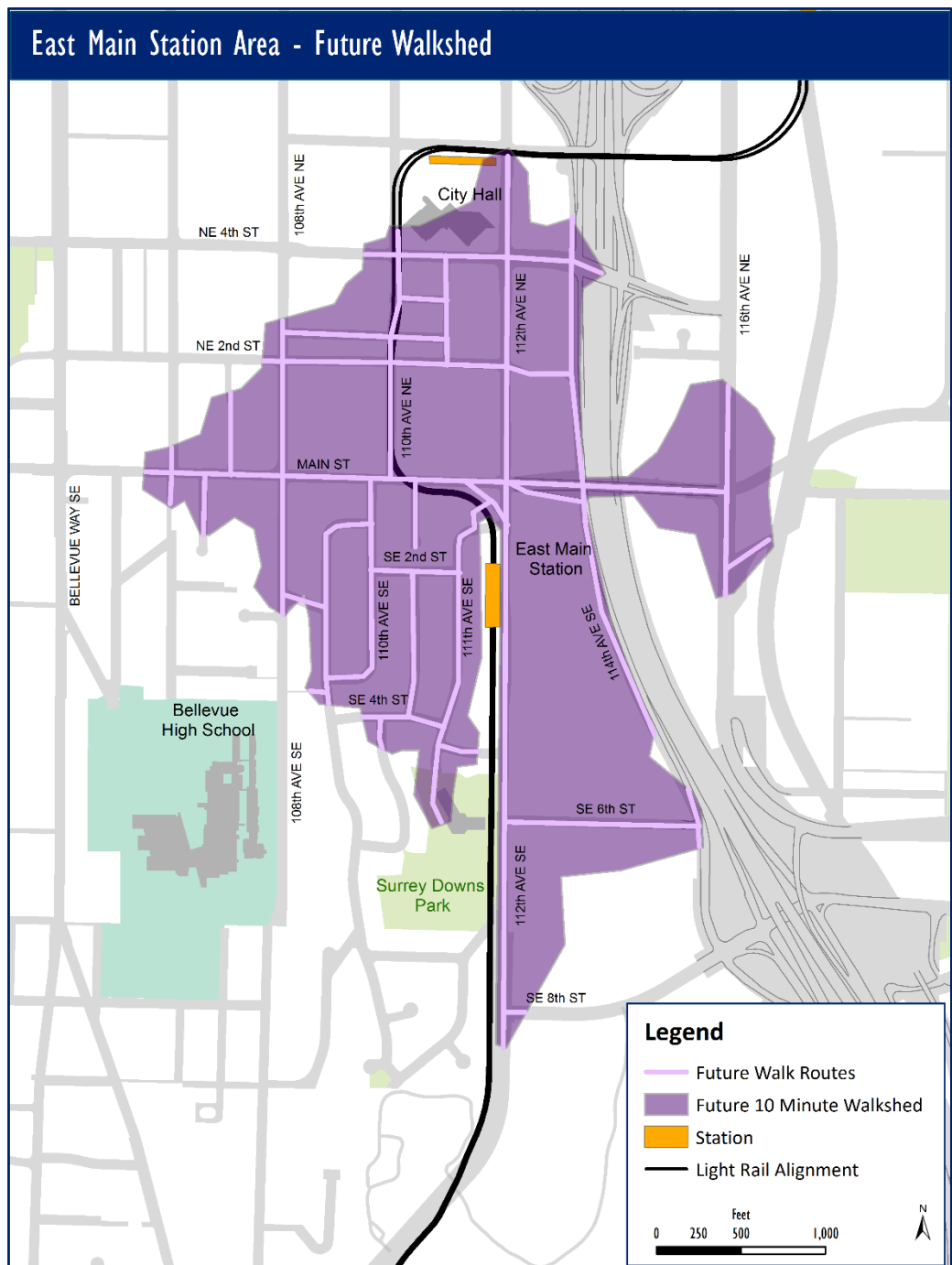
## Access changes





# Future Walkshed

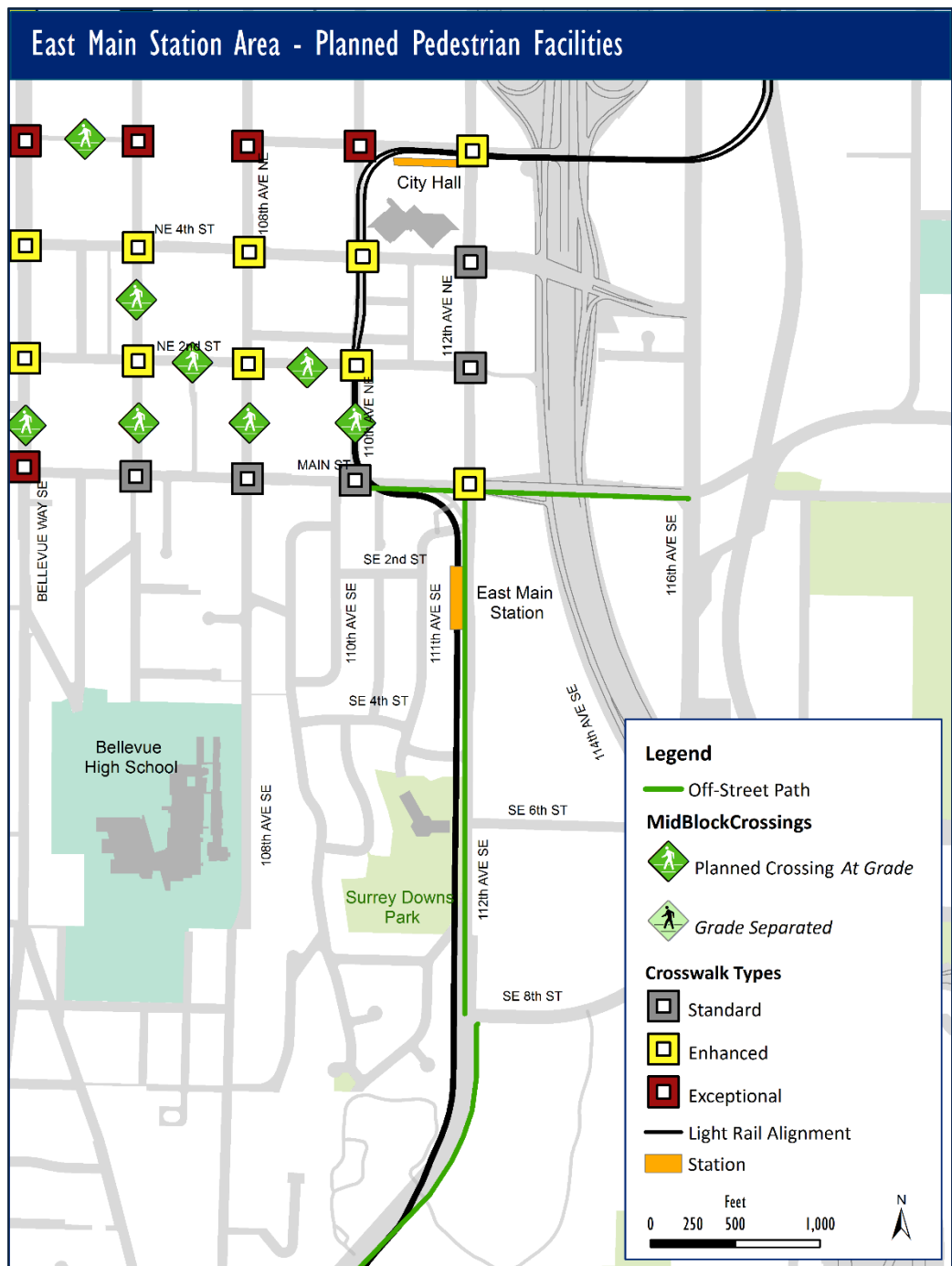
Areas that can be reached within a 10 minute walk from the East Main light rail station after construction SE 1<sup>st</sup> Place and SE 4<sup>th</sup> St closed



# Future Conditions

## Pedestrian Network

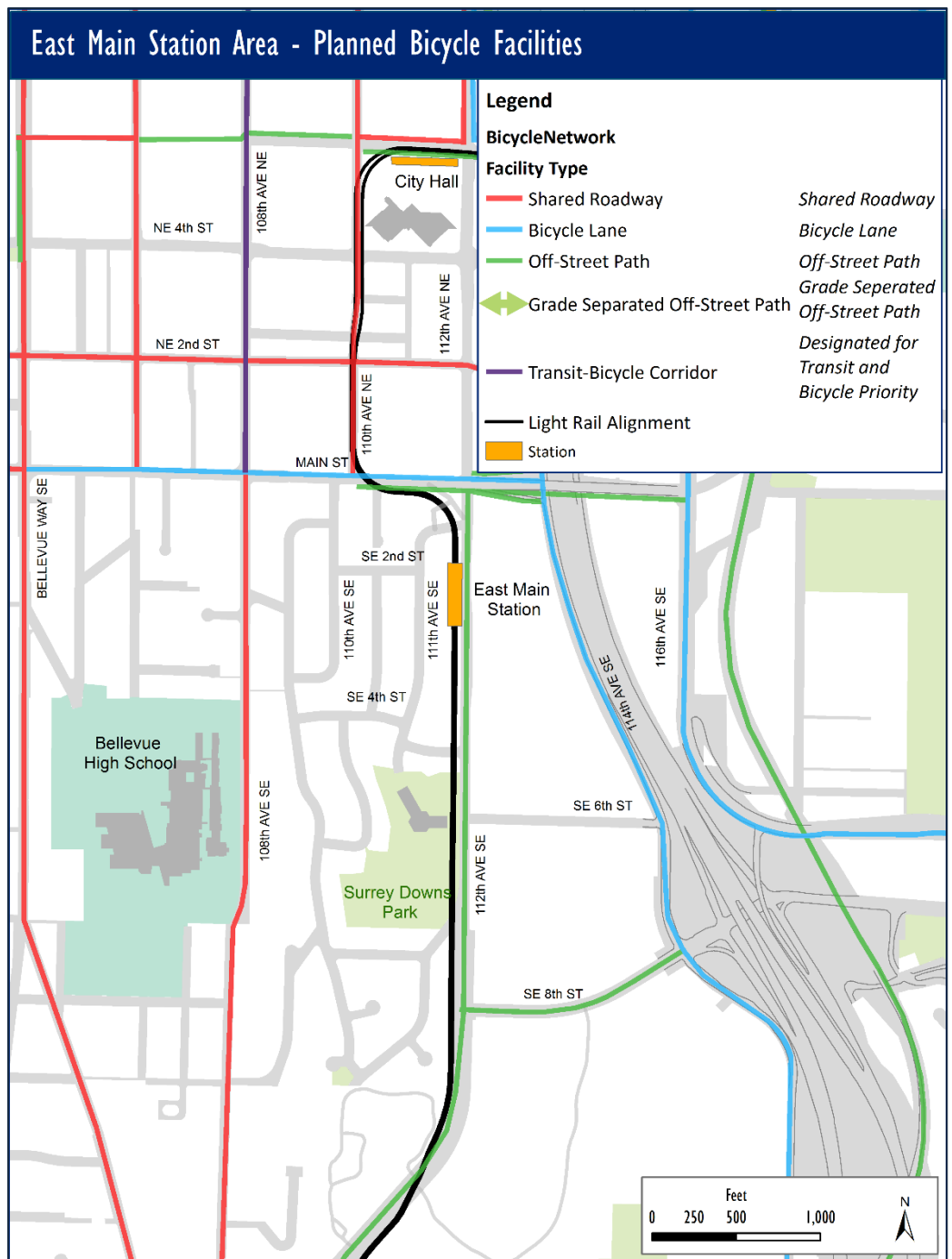
- Planned Improvements



# Future Conditions

## Bicycle Network

- Planned Improvements



# Discussion:

- Current Connections:
  - What we've heard so far
  - Anything to add?
- How/where can Non-motorized connections be improved?
- Anything we've missed?



# Vehicular Access and Circulation



# Goals/Outcome

- Provide CAC members with a summary of existing conditions and future plans
- Discuss implications of light rail in the station area on non-motorized and vehicular networks
- CAC to provide direction to staff & consultants in developing ideas to address pedestrian & bicycle circulation as well as vehicular traffic issues (access, parking, cut-through traffic). Strategies to be refined by staff and by CAC at following meeting.



# Discussion Outline

- Context – Existing Conditions
- What will be changing
- Existing City strategies
- What we've already heard
- Discussion/Poll
- What potential strategies will we be exploring?
- Brainstorming – what would CAC members want to see analyzed?



# Context

- Existing Conditions
- Neighborhood access changes
- Future Redevelopment?
- CIP projects
- Construction mitigation





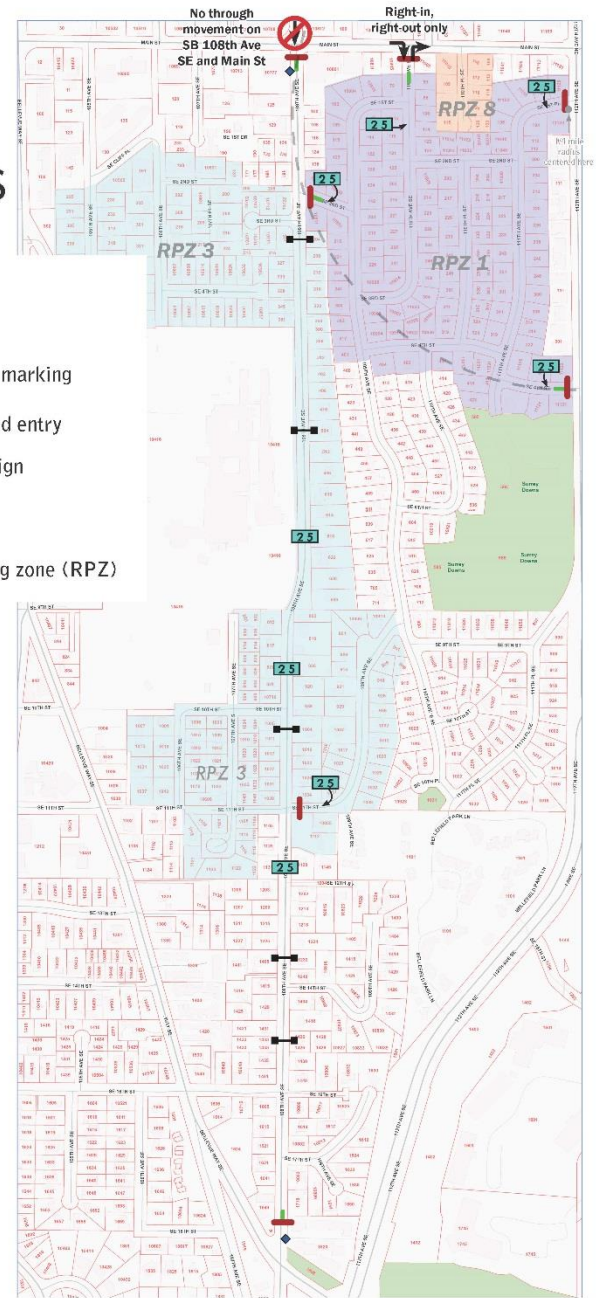
# Existing Strategies

- Parking
- Traffic
  - Traffic Calming
  - Traffic Reduction

## Traffic calming elements

### LEGEND

- ▬ Speed hump
- 2.5 25 mph pavement marking
- Brick neighborhood entry
- ◆ Residential area sign
- ▬ Median
- RPZ Residential parking zone (RPZ)



# What we've heard

- Visioning workshop
- Previous comments



# Discussion: Within the station area I'm worried that \_\_\_\_\_ measures are ...

... too lenient.                      ...about right.                      ...too strict.

parking



speeding



safety



resident access



traffic calming



Q: Which of the above are you most worried about when East Link opens? \_\_\_\_\_



# Finding the Right Balance

- What is the right balance? It depends on...
  - Perspective
  - Expectations
  - Needs
- What are the trade-offs?
  - Access vs restrictions
- So what is the take away?
  - There is no one “right” solution
  - Some issues do not have a technical solution
  - Not everyone will be 100% happy



# What new ideas will we be exploring?

- Parking: would additional RPZ strategies be helpful?
- Resident access: Can improvements be made to ease neighborhood access without encouraging cut-through traffic?
- Traffic calming: Are other strategies needed to address speeding or safety issues?
- Traffic restrictions: Are there different strategies to protect neighborhood from cut-through traffic?
- Other?



# Goals/Outcome

- Provide CAC members with a summary of existing conditions and future plans
- Discuss implications of light rail in the station area on non-motorized and vehicular networks
- CAC to provide direction to staff & consultants in developing ideas to address pedestrian & bicycle circulation as well as vehicular traffic issues (access, parking, cut-through traffic). Strategies to be refined by staff and by CAC at following meeting.

Station Area Planning addresses how the future station will be integrated into the surrounding neighborhood (Addressing construction issues are not the charge of the CAC)



# Next Steps:

- Staff and Consultants analyze ideas
- Summarize what we've heard
  - Provide visual summary of comments/ideas
- Review and refine pedestrian and bicycle connections to station for public comment (April 14<sup>th</sup> CAC meeting)
- Refine ideas for vehicular access, traffic calming, cut-through traffic and parking (April 14<sup>th</sup> CAC meeting)

