

Sears Creek Basin

Lake Washington Watershed (WRIA 8) / State Stream #08-0267



LAND CHARACTERISTICS

Basin Area: 565 Total Acres (City area: 1.6%)
 Drainage Jurisdiction(s):

Bellevue: 61.2%	Kirkland: 0.0%
Beaux Arts: 0.0%	Medina: 0.0%
Clyde Hill: 0.0%	Newcastle: 0.0%
Issaquah: 0.0%	Redmond: 38.8%
King County: 0.0%	Renton: 0.0%

Lowest Elevation: 194 Ft
 Highest Elevation: 445 Ft

Total Length of Open Channel: 0.4 Miles
 Total Length of Storm Drainage Pipes: 9.5 Miles

POPULATION

Basin Population (2016): 5,823 (3.9% of all Basins)
 Basin Population Density: 6,601 People per Square Mile
 The population density in Bellevue ranges from 1,344 to 9,851 people per square mile.

LAND USE

	Entire Basin	Within Bellevue
Public Right of Way:	15.9 %	46.2 %
Commercial/Office:	35.1 %	17.9 %
Industrial:	0.4 %	0.3 %
Institutional/Government:	12.0 %	11.5 %
Mixed Use/Misc:	15.5 %	6.6 %
Multi-Family:	7.0 %	5.3 %
Open Space/Park:	0.1 %	0.1 %
Single Family Residential:	8.3 %	8.3 %
Unknown:	5.7 %	3.9 %

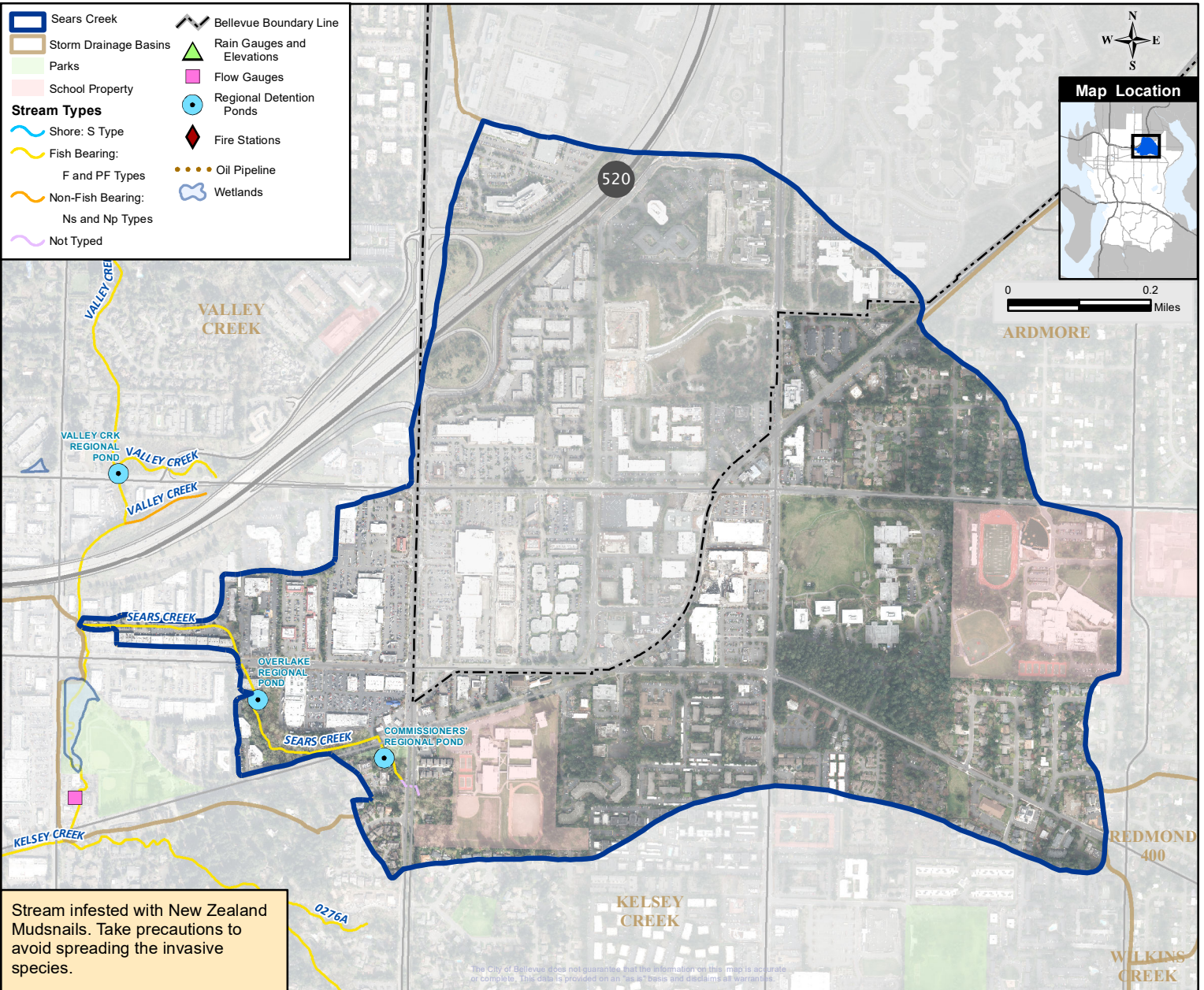
SALMON PRESENT in BASIN

Chinook*+ Sockeye
 Coho+
 Cutthroat trout

* Listed Federal Endangered Species
 + City Species of Local Importance (Bellevue Land Use Code 20.25H.150A)

LAND COVER

	Entire Basin	Within Bellevue
Impervious:	64.2%	57.9%
Tree Canopy:	23.6%	27.4%
Impervious in 100 Ft Stream Buffer:	46.1%	46.1%
Tree Canopy in 100 Ft Stream Buffer:	50.5%	50.4%



Stream infested with New Zealand Mudsails. Take precautions to avoid spreading the invasive species.

The City of Bellevue does not guarantee that the information on this map is accurate or complete. This data is provided on an "as is" basis and disclaims all warranties.