

Coal Creek Basin

Lake Washington Watershed (WRIA 8) / State Stream #08-0268



LAND CHARACTERISTICS

Basin Area: 3,978 Total Acres (City area: 11.1%)
 Drainage Jurisdiction(s):

Bellevue: 59.9%	Kirkland: 0.0%
Beaux Arts: 0.0%	Medina: 0.0%
Clyde Hill: 0.0%	Newcastle: 13.4%
Issaquah: 0.0%	Redmond: 0.0%
King County: 26.8%	Renton: 0.0%

Lowest Elevation: 18 Ft
 Highest Elevation: 1,563 Ft

Total Length of Open Channel: 18.4 Miles
 Total Length of Storm Drainage Pipes: 53.9 Miles

POPULATION

Basin Population (2016): 12,996 (8.6% of all Basins)
 Basin Population Density: 2,091 People per Square Mile
 The population density in Bellevue ranges from 1,344 to 9,851 people per square mile.

LAND USE

	Entire Basin	Within Bellevue
Public Right of Way:	10.0 %	49.2 %
Commercial/Office:	8.0 %	0.0 %
Industrial:	1.3 %	0.0 %
Institutional/Government:	1.7 %	1.3 %
Mixed Use/Misc:	4.4 %	3.6 %
Multi-Family:	0.3 %	0 %
Open Space/Park:	40.8 %	13.5 %
Single Family Residential:	30.6 %	29.5 %
Unknown:	2.9 %	2.6 %

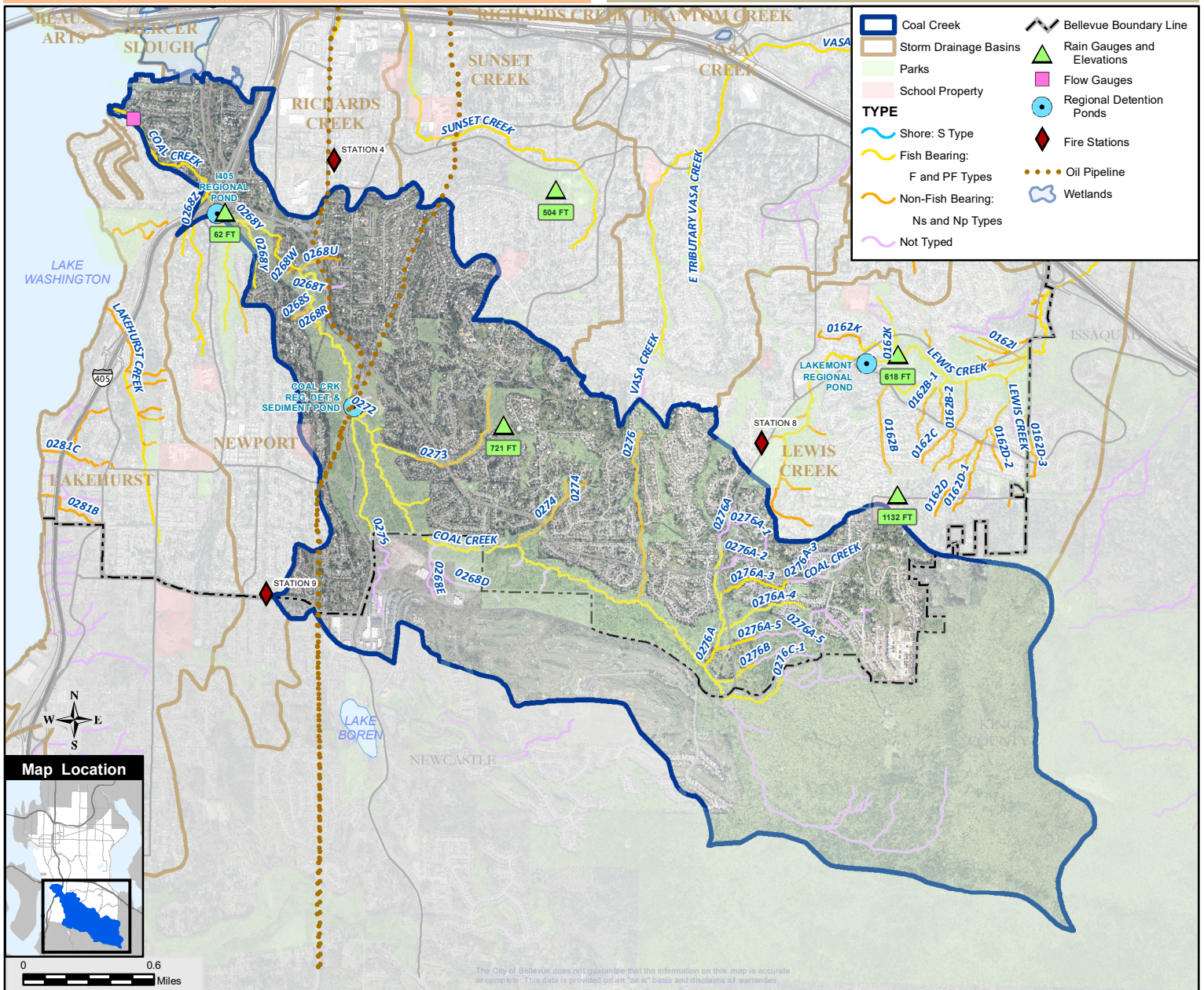
SALMON PRESENT in BASIN

Chinook**	Sockeye
Rainbow & cutthroat trout	Steelhead
Coho+	

* Listed Federal Endangered Species
 + City Species of Local Importance (Bellevue Land Use Code 20.25H.150A)

LAND COVER

	Entire Basin	Within Bellevue
Impervious:	20.9 %	30.2 %
Tree Canopy:	58.9 %	47.5 %
Impervious in 100 Ft Stream Buffer:	8.3 %	7.3 %
Tree Canopy in 100 Ft Stream Buffer:	85.7 %	59.0 %



The City of Bellevue does not guarantee that the information on this map is accurate or complete. This data is provided on an "as is" basis and disclaims all warranties.