



# Bellevue Downtown Association Downtown Bike Series

## *Meeting 1: Introduction & Information*

***Franz Loewenherz***

***Andreas Piller***

***Kyle Potuzak***

***Chris Long***

***September 28, 2017***



## Today's Agenda:

- 1) *Meeting Purpose*
- 2) *PBII Overview*
- 3) *BDA Consultative Process*
- 4) *Next Steps: Bike Share*
- 5) *Next Steps: Demo Corridor*

**The BDA has asked the Bellevue Transportation Department to engage in a timely discussion about how to make Downtown a comfortable, safe, and attractive place for people to bike.**



- **BDA Transportation Committee will conduct an internal review and discussion, followed by driving consensus on a recommendation.**
- **The recommendation will be presented to the BDA Board of Directors (12/19).**
- **The Board will vote on a position that will be communicated to the Bellevue Transportation Commission.**



# Microsoft



BELLEVUE  
**PEDESTRIAN  
& BICYCLE**  
IMPLEMENTATION INITIATIVE

## Meeting Purpose

bike & expedia



BELLEVUE  
PEDESTRIAN  
& BICYCLE  
IMPLEMENTATION INITIATIVE

Meeting Purpose



BELLEVUE  
**PEDESTRIAN  
& BICYCLE**  
IMPLEMENTATION INITIATIVE

## Meeting Purpose



BELLEVUE  
**PEDESTRIAN  
& BICYCLE**  
IMPLEMENTATION INITIATIVE

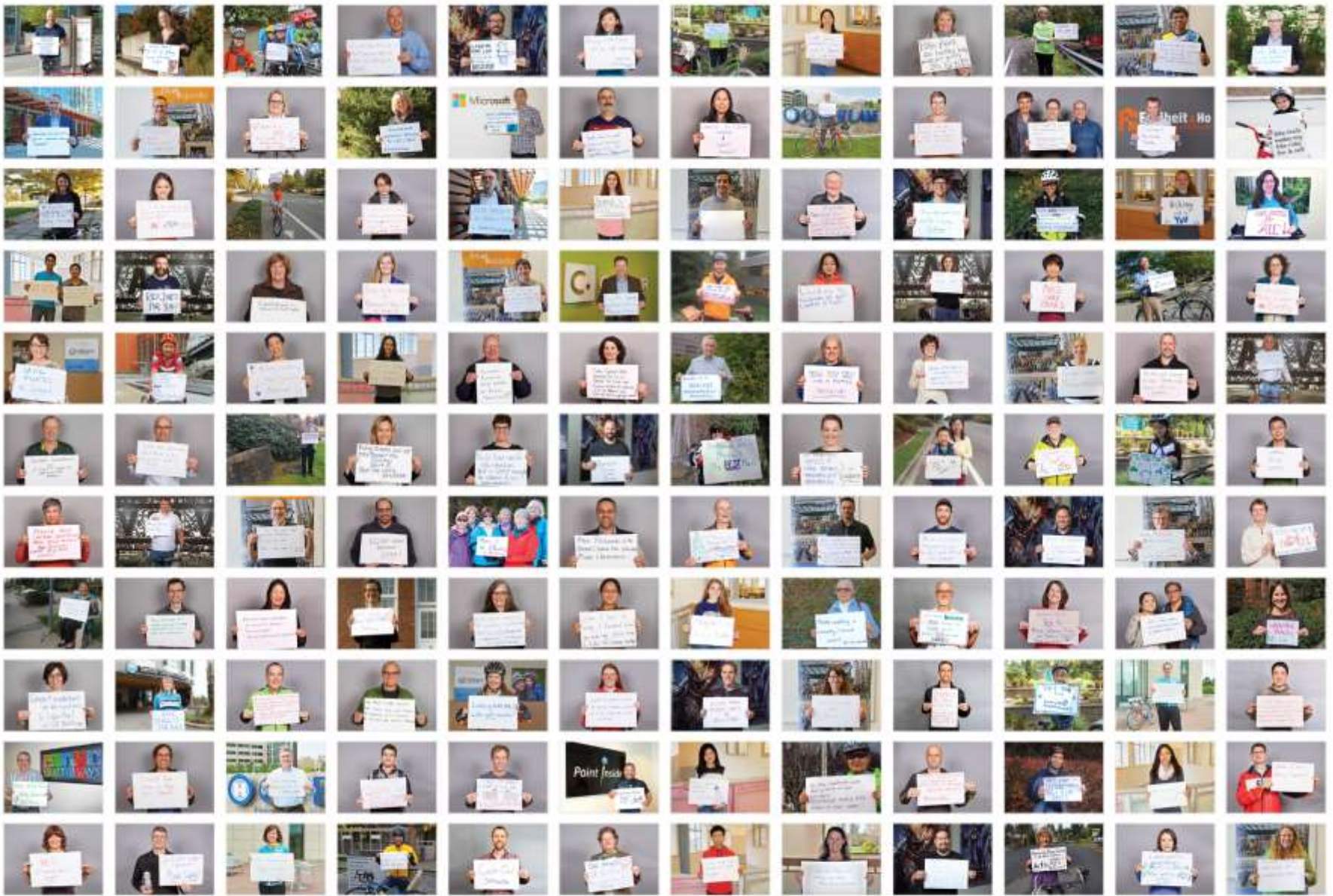
# Meeting Purpose





BELLEVUE  
**PEDESTRIAN  
& BICYCLE**  
IMPLEMENTATION INITIATIVE

## Meeting Purpose



BELLEVUE  
**PEDESTRIAN  
& BICYCLE**  
IMPLEMENTATION INITIATIVE

# Meeting Purpose



**2009**

city of bellevue  
pedestrian & bicycle  
transportation plan report



- Formulated vision, goals, objectives.
- Assessed gaps in the non-motorized network.
- Established performance targets.

*Ordinance No. 5861 (2/17/2009)*



BELLEVUE  
**PEDESTRIAN  
& BICYCLE**  
IMPLEMENTATION INITIATIVE

## 2009 Pedestrian & Bicycle Plan



## 2019 Performance Target:

“Within 10 years, implement at least two completed, connected, and integrated north-south and at least two east-west bicycle routes that connects the boundaries of the city limits, and connects to the broader regional bicycle system.”

***- 2009 Pedestrian & Bicycle Transportation Plan***

## E-W Priority Bicycle Corridors Completion Status

With Bicycle Projects completed 2009-2016



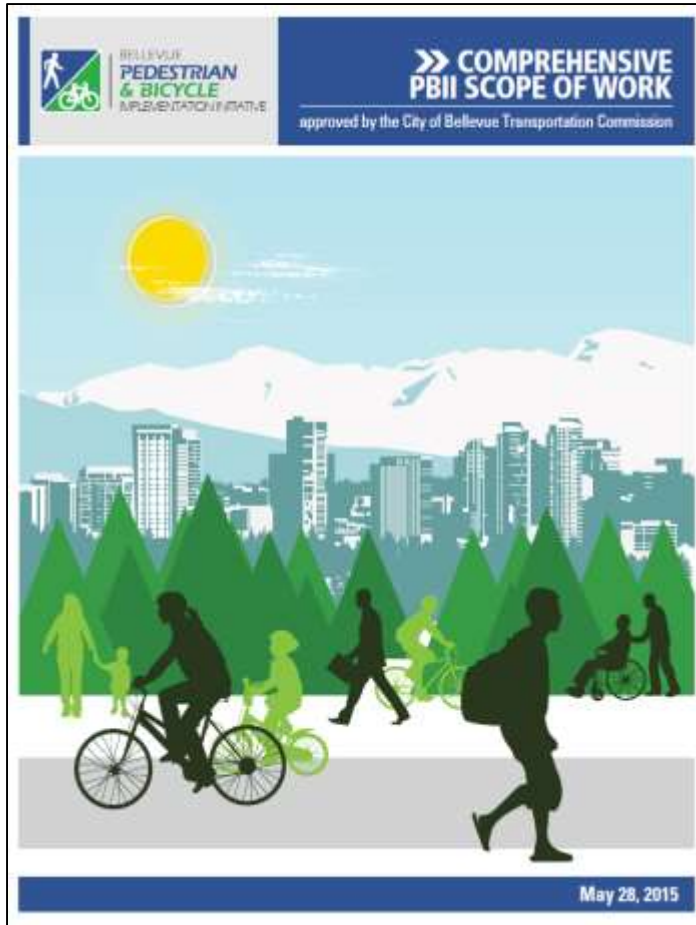
## N-S Priority Bicycle Corridors Completion Status

With Bicycle Projects completed 2009-2016



BELLEVUE  
**PEDESTRIAN  
& BICYCLE**  
IMPLEMENTATION INITIATIVE

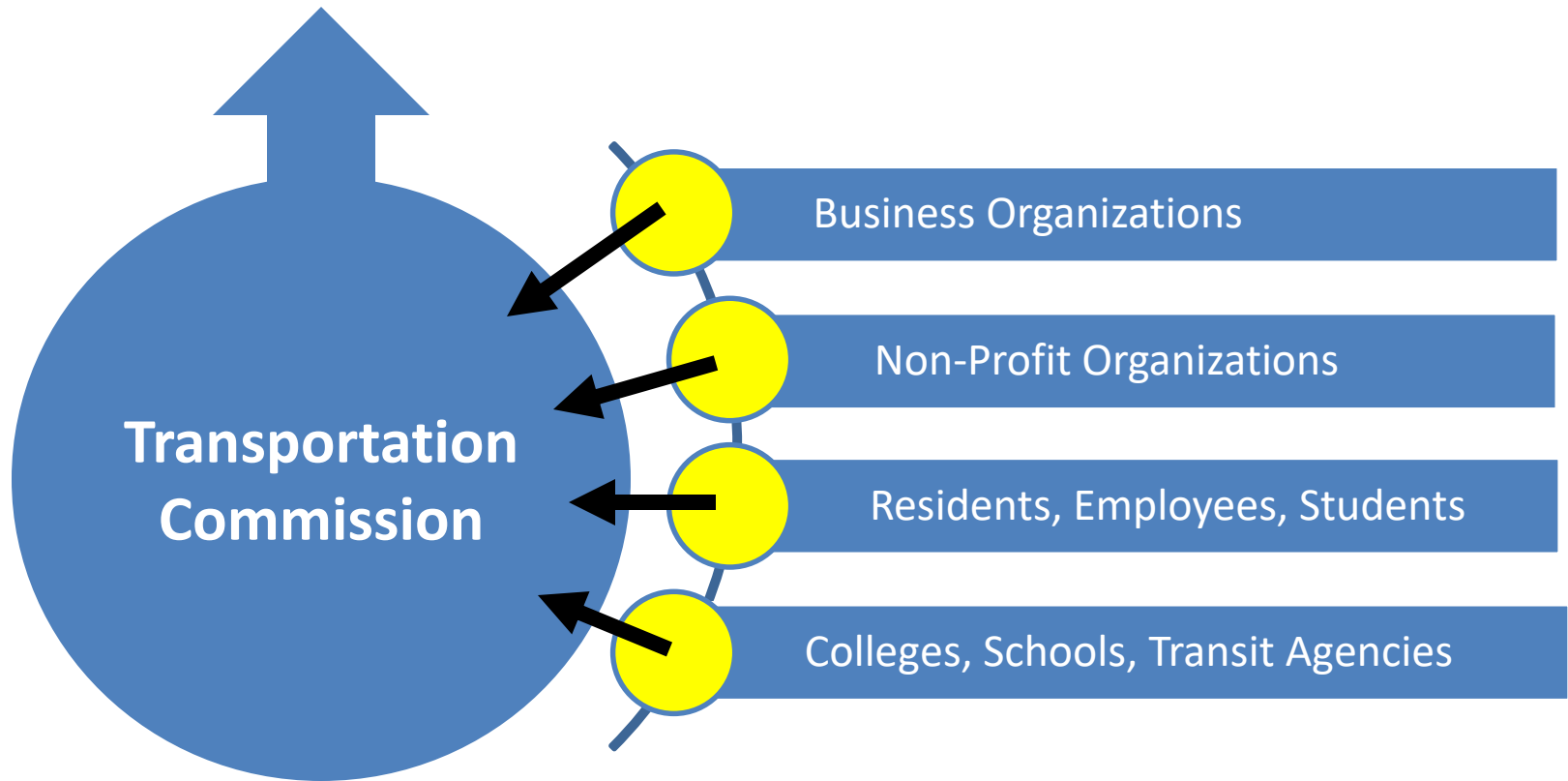
# Priority Bicycle Corridors



***“Engage community stakeholders in setting the priorities for investment in non-motorized facilities.”***

***- Council Program Principle(s)***

# Bellevue City Council





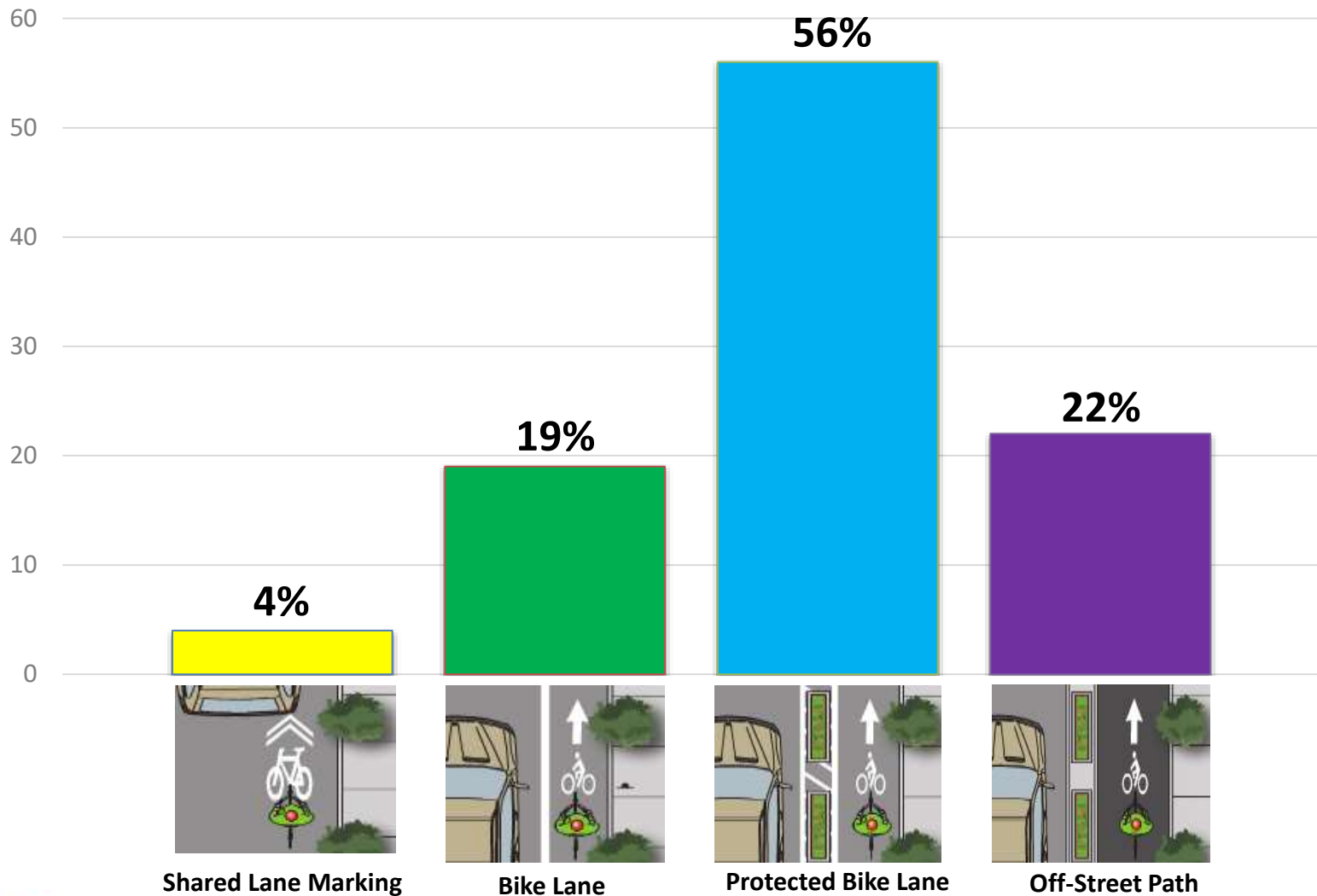
“The separated lane is very attractive for safety reasons. My greatest concern is the taking of scarce roadway space for a limited user base.” – Lampe



“Separating the biker from traffic is a given... We provide it for cars to prevent accidents. We should provide it for bikers given the imbalance in protection.” – Barksdale



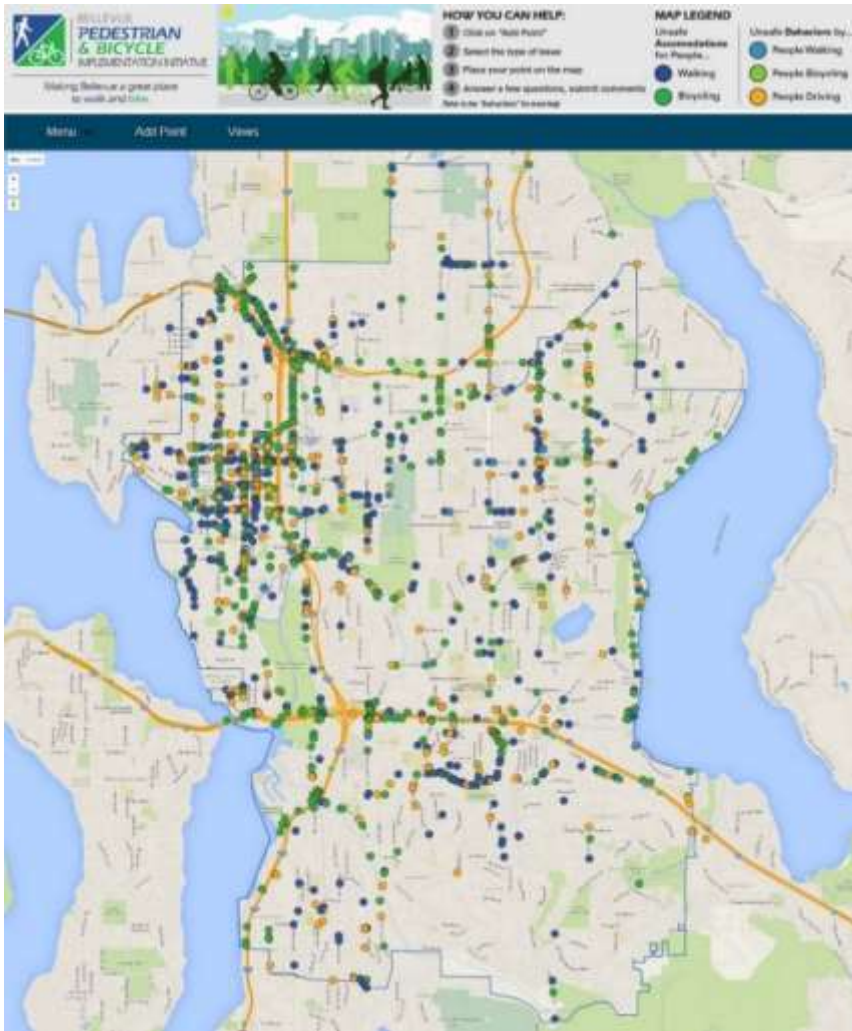
# Which of these types of facilities would encourage you/your employees to bike in Downtown Bellevue?



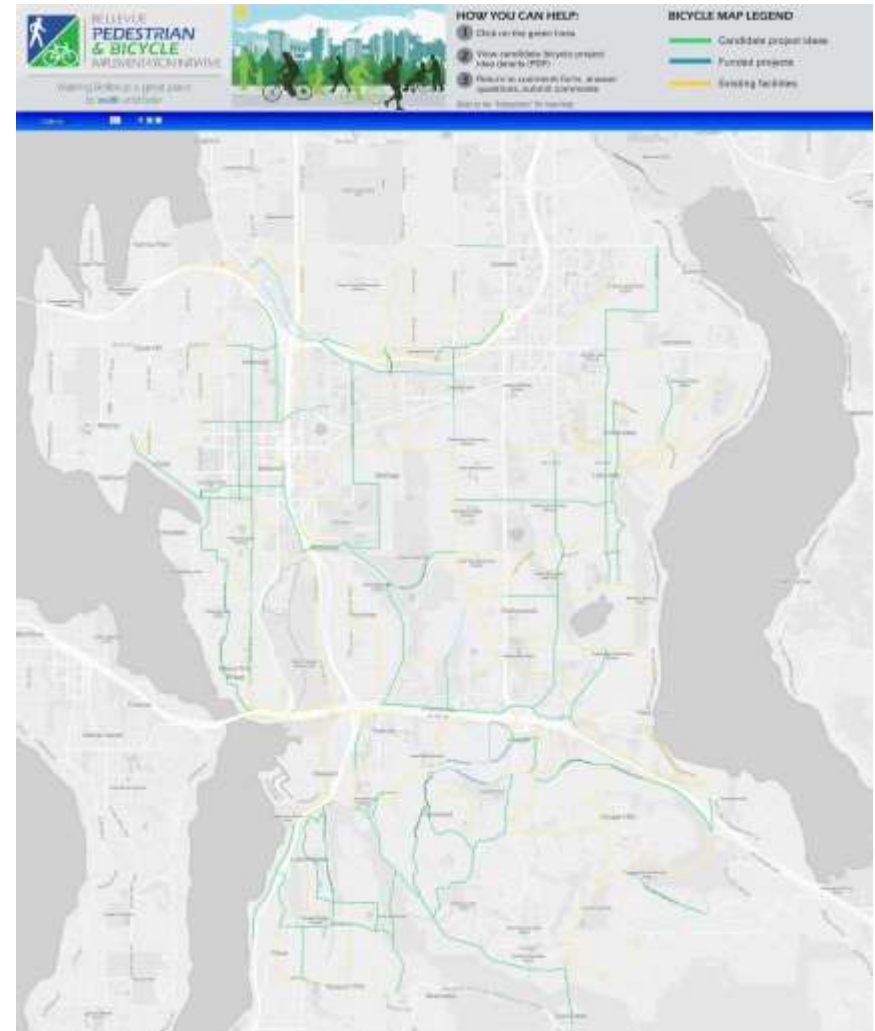


“Downtown Bellevue is not an area where the faint of heart would choose to ride; that said, it is prime for investment to attract additional riders. What’s needed are safe and inviting bicycle facilities that are separated from the auto.”

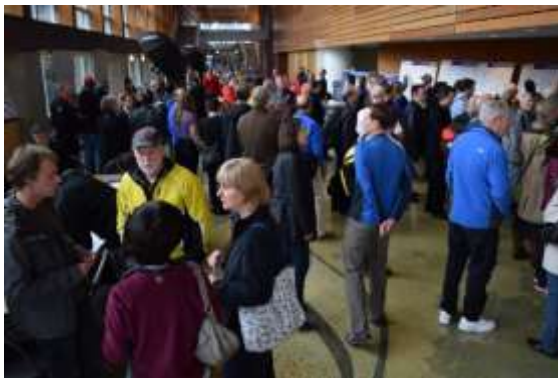
***- Karen Doherty, Senior Vice President, Puget Sound Area Manager of HDR***



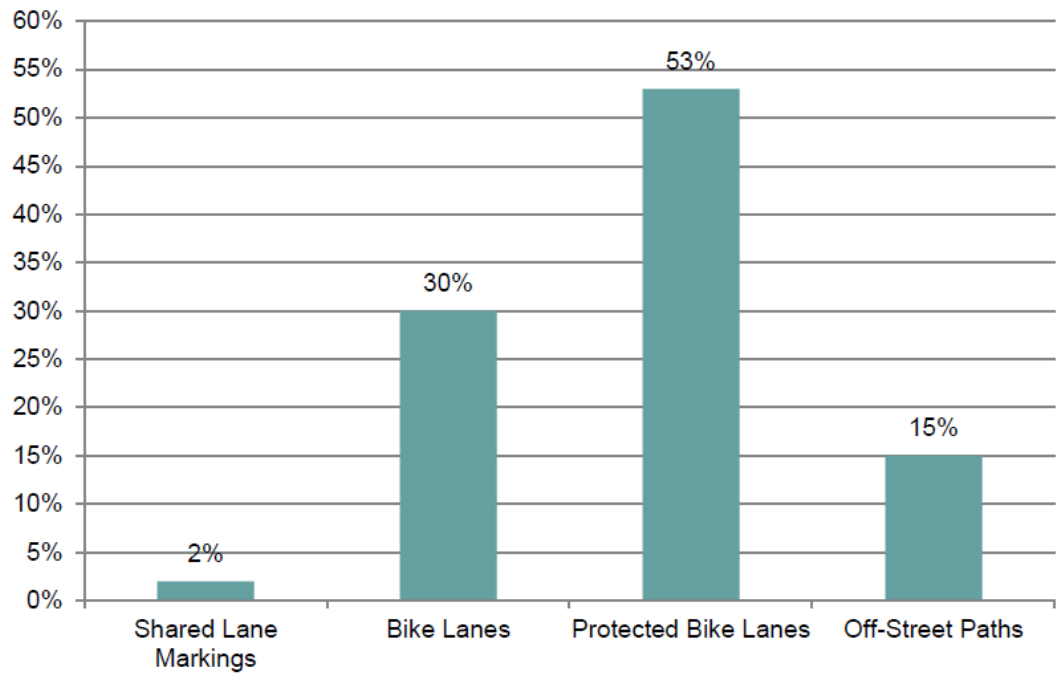
**Fall 2015: Locations that feel unsafe for people walking and bicycling.**



**Spring 2016: Comments on 52 project ideas being considered in the BRIP.**



Which of these types of facilities would encourage you to bicycle in Bellevue?	Responses	
	Percent	Count
Shared Lane Markings	2%	3
Bike Lanes	30%	37
Protected Bike Lanes	53%	66
Off-Street Paths	15%	18
Total		124



# » BICYCLE RAPID IMPLEMENTATION PROGRAM

project ideas and conceptual layouts

## DRAFT



April 2016



### GENERALIZED FACILITY TYPES

- Off-street Paths
- Separated Bike Lanes
- Conventional Bike Lanes
- Marked Bike Routes
- Unmarked Shared Roadways
- Other Roads



BELLEVUE  
**PEDESTRIAN  
& BICYCLE**  
IMPLEMENTATION INITIATIVE

## BRIP Report (April 2016)



***“We strongly urge you to prioritize funding for a complete, connected 57 mile network of bike/ped infrastructure throughout Bellevue, emphasizing protected bike paths as much as possible.”***

***- Eric Artz, Chief Operating Officer***



***“We support increased investment in bicycling infrastructure and taking rapid action on the following projects ...”***

***- Al Kinisky, Senior Director of Real Estate***



**Seattle Children's**  
HOSPITAL • RESEARCH • FOUNDATION

***“... the Bicycle Rapid Implementation plan is a cost-effective strategy to help transform Bellevue into a safe and inviting urban center for bicyclists and vital for improving station access in preparation for Sound Transit's East Link....”***

***- Lisa Brandenburg, President***

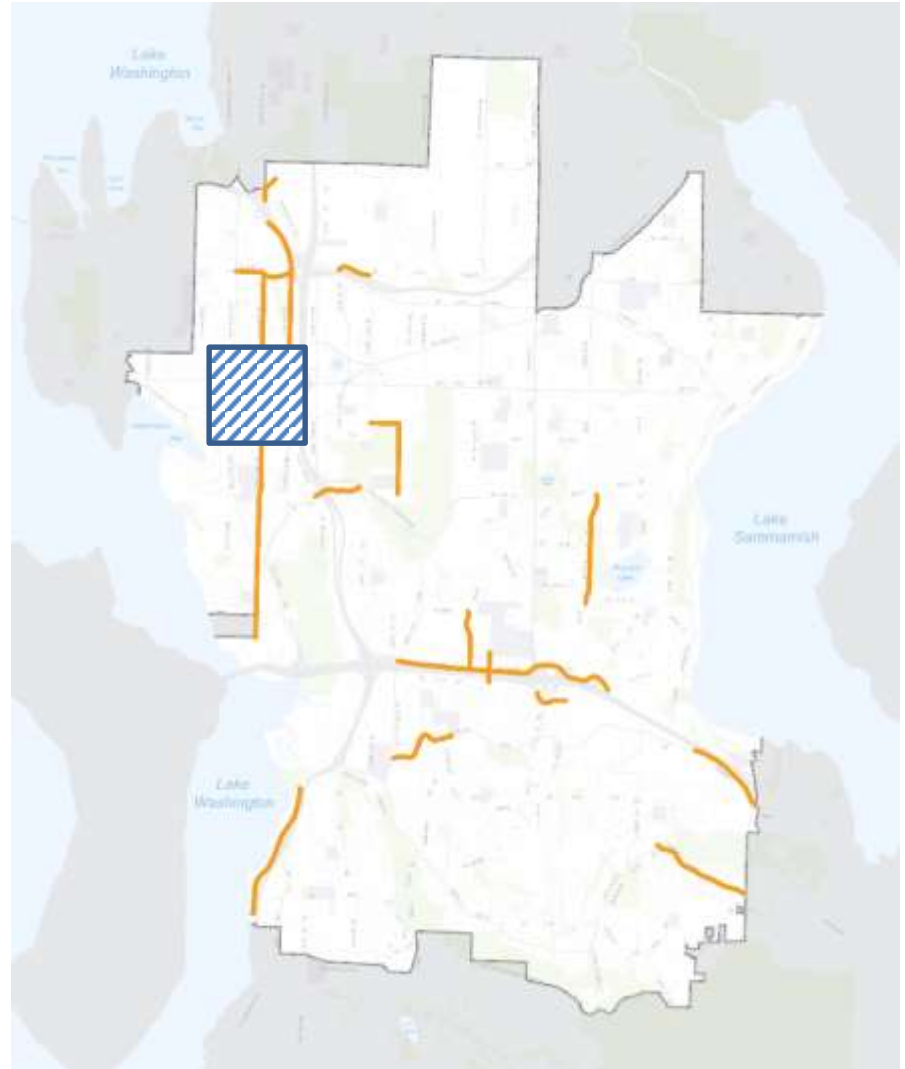


**Business Community (April 2016)**

# NEIGHBORHOOD LEVY PROJECT



***In 2017-2018, the BRIP program will leverage roughly \$1.7M of funding from the Transportation Levy.***



**Levy Funding (November 2016)**

9/28/17  
Committee

10/26/17  
Committee

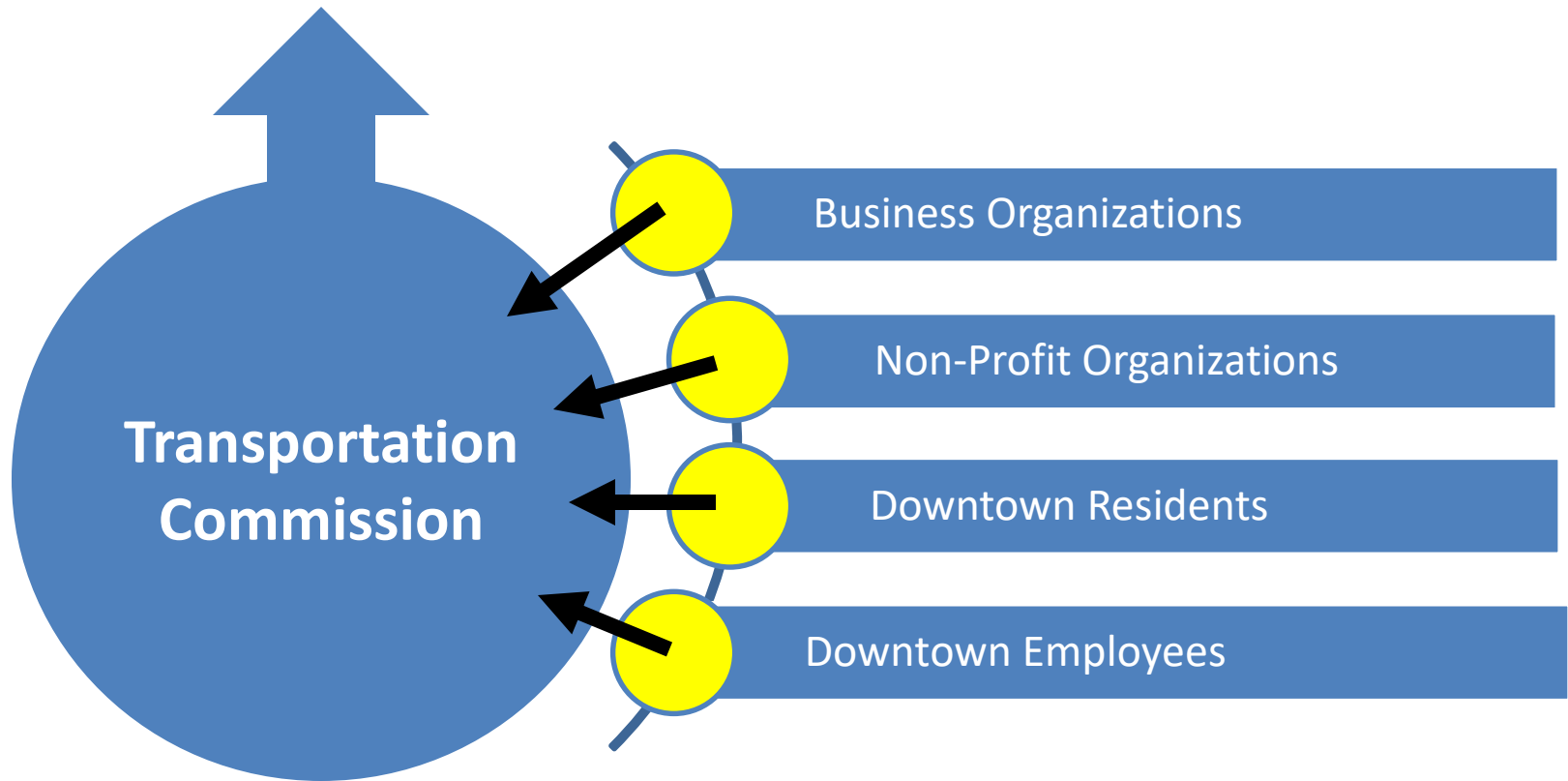
11/16/17  
Committee

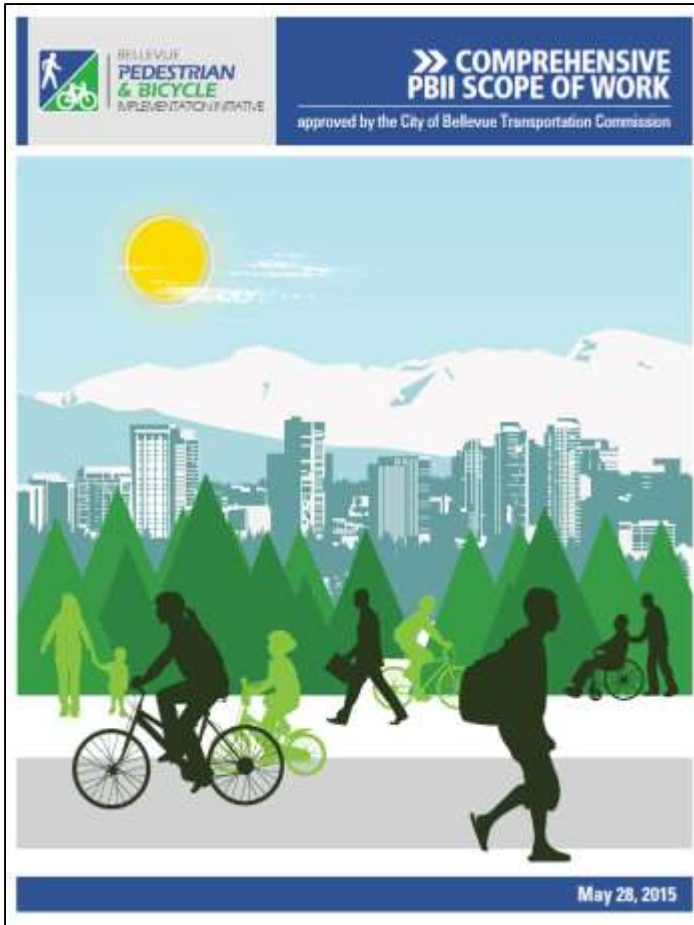
12/19/17  
Board

- **Bike Share**
- **Demonstration Bikeway Project**
- **Downtown Bicycle Network**



# Bellevue City Council





***“Provide people in Bellevue access to a bicycle when they want one, without having to worry about storage, security, and maintenance.”***

***- PBII Scope of Work***

# Bike share is...

Shared Fleet



Point-to-Point



Short Term



Spontaneous



Transportation

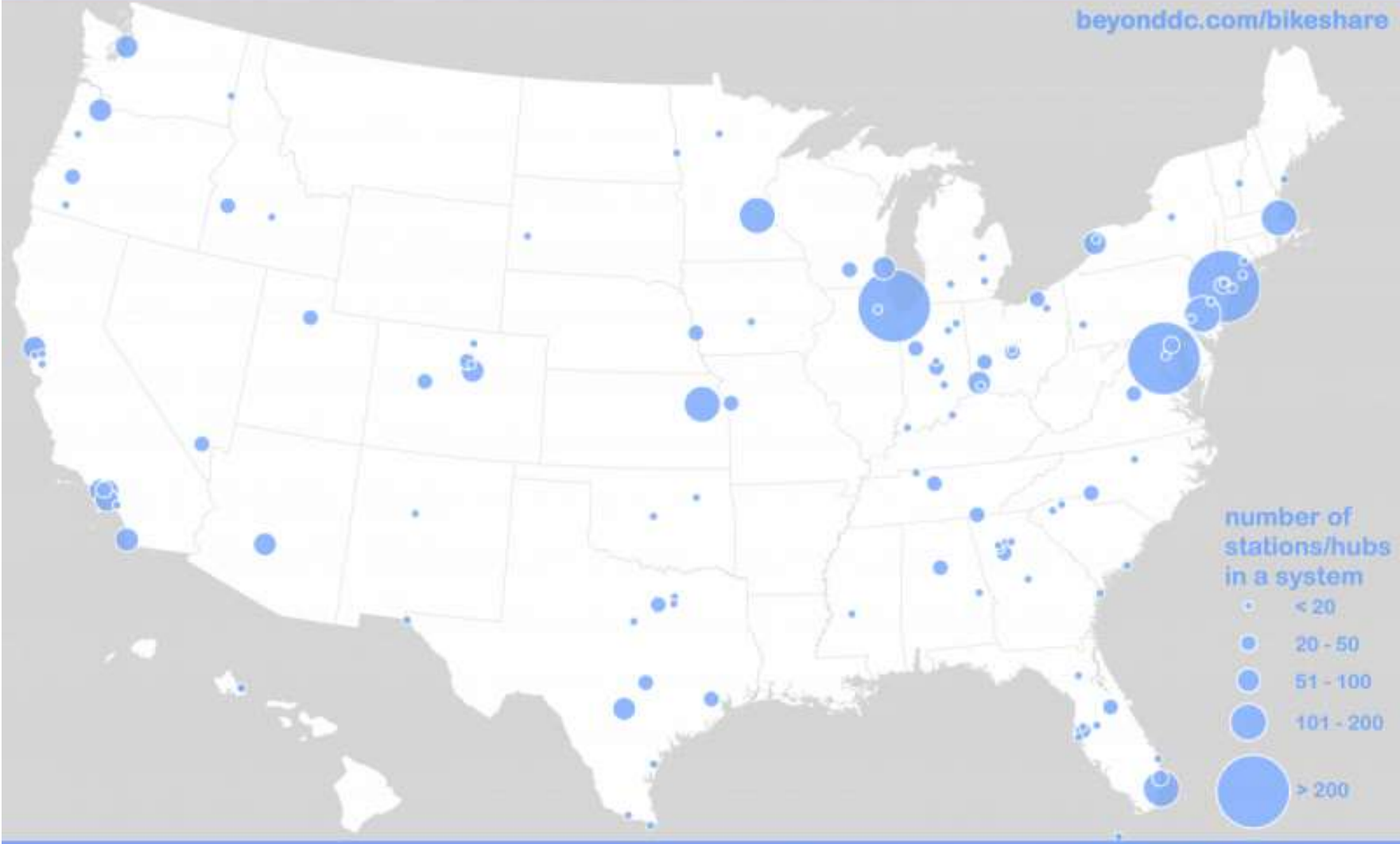


Recreation



Not Long  
Term Rental





**119** cities with bikeshare

**4789** total nationwide stations/hubs



Data as of January 2017. Stations and hubs are not exactly synonymous; bikeshare technology is diverse.



# United States of Bike Share



## Why Use Bike Share?

- Convenience
- Expedience
- Expanded Range
- Flexibility
- Improved Access to Transit
- Enjoyment
- Bike Mobility without...
  - Maintenance
  - Parking/Storage
  - Planning Ahead

## Station-Based



## Hub-Based



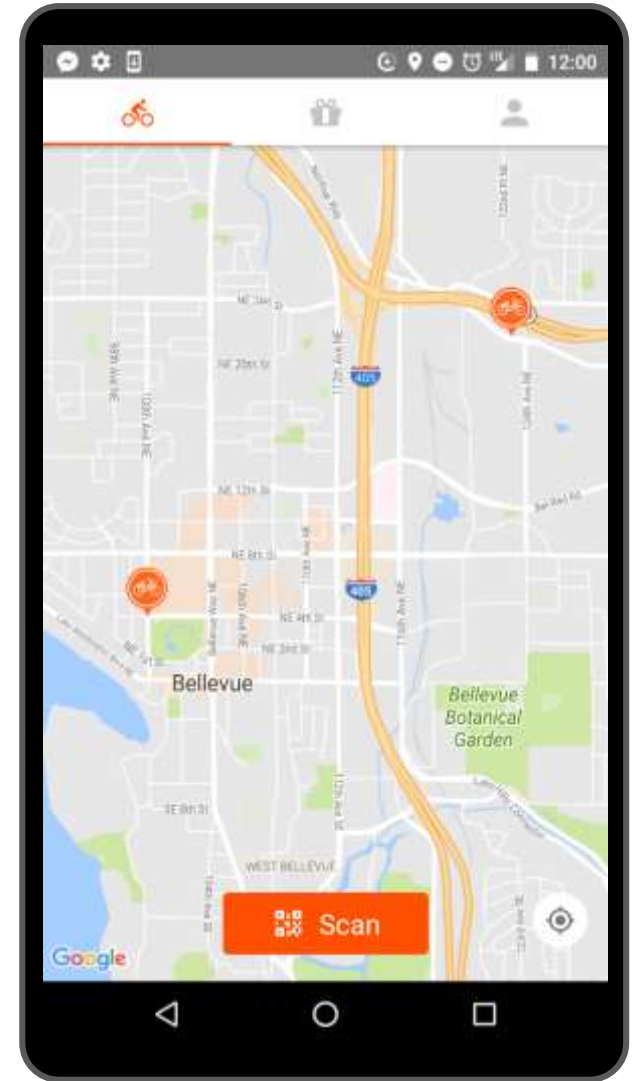
## Free-Floating





## **Bike Share Permit Requirements:**

- Safety
- Parking
- Operations
- Data Sharing
- Fees
- Application







BELLEVUE  
PEDESTRIAN  
& BICYCLE  
IMPLEMENTATION INITIATIVE

## Bicycling and Bike Share in Bellevue

9. If a bike share service was available in Bellevue today, would you use bike share in Bellevue? 

- Yes, I would use bike share in Bellevue
- No, I would not use bike share
- I don't know

Please explain why or why not.

10. If a bike share service was available in Bellevue today, in which parts of the city would you use bike share? 

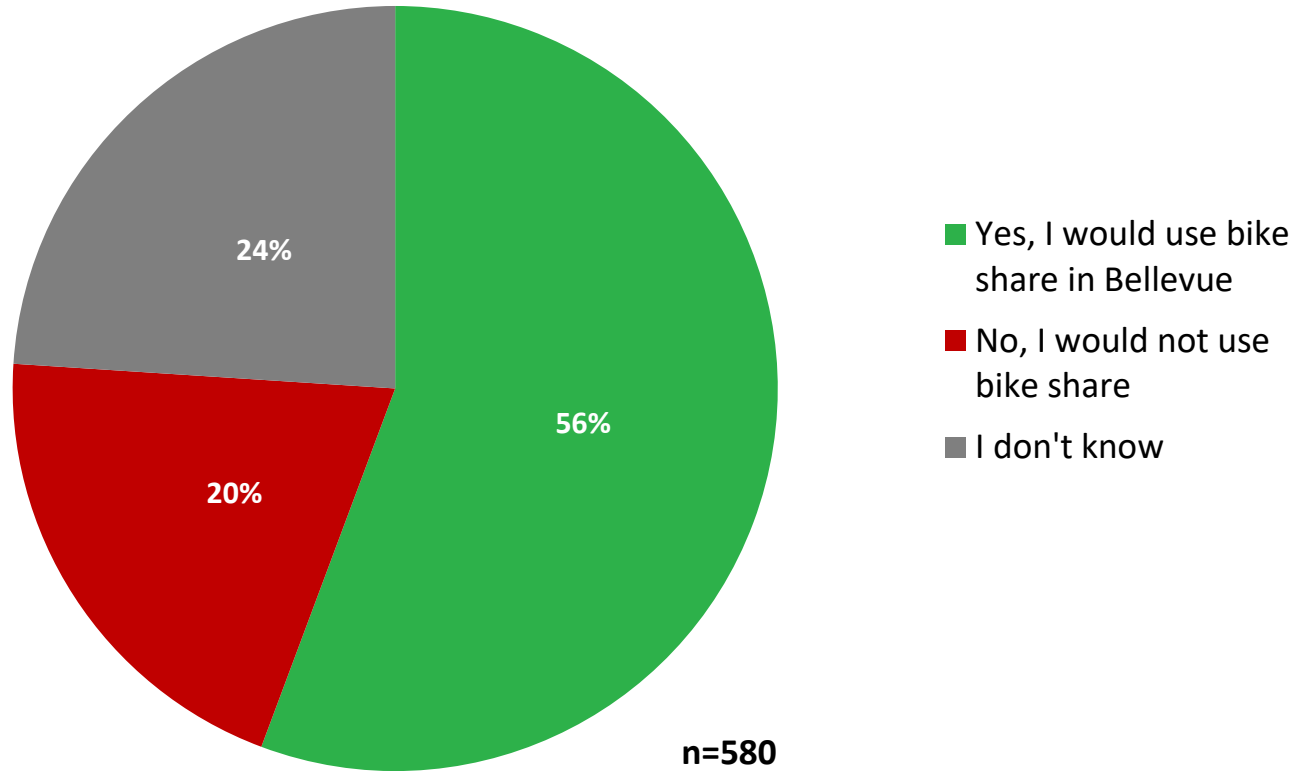
- Downtown Bellevue



BELLEVUE  
PEDESTRIAN  
& BICYCLE  
IMPLEMENTATION INITIATIVE

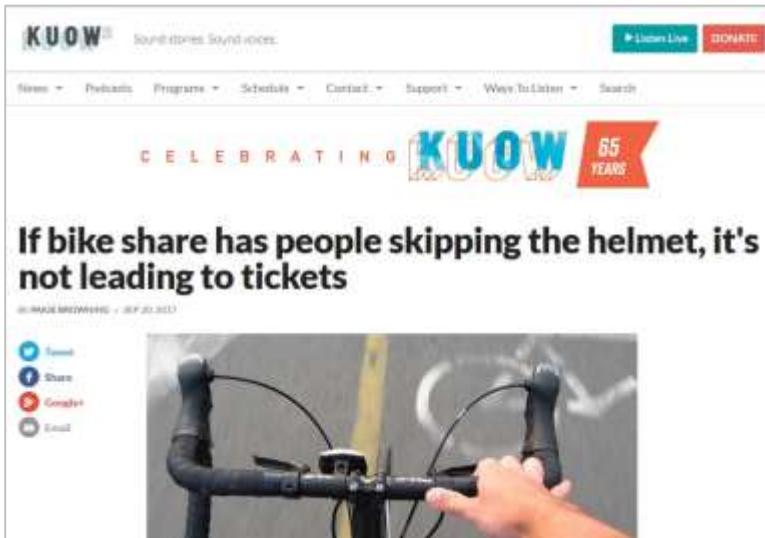
# Bicycling and Bike Share Survey

# If a bike share service was available in Bellevue today, would you use bike share in Bellevue?









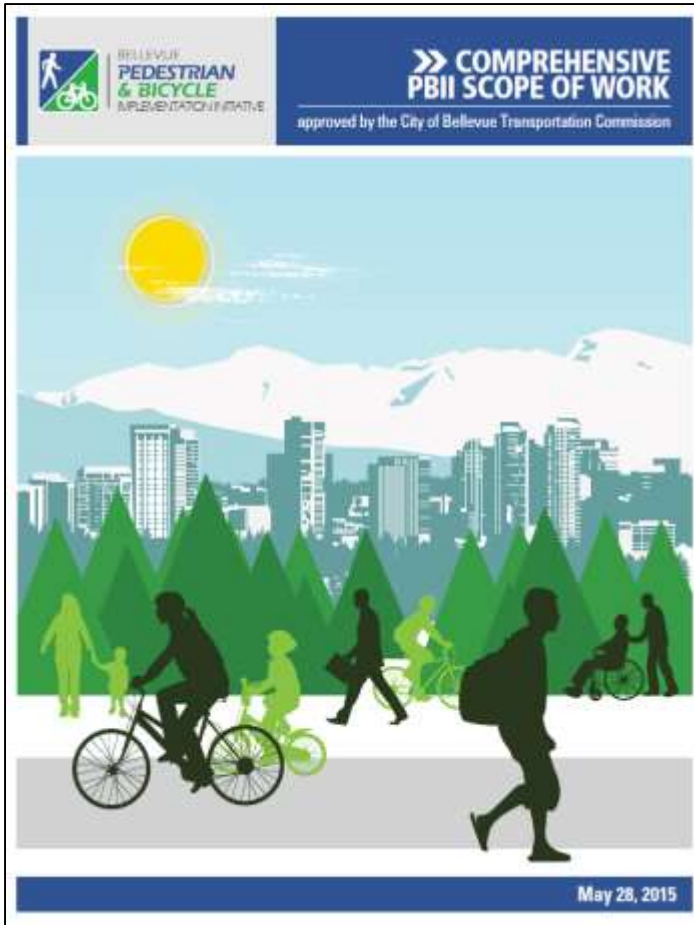
## Common Concerns

- Public Investment
- Helmet Law
- Safety
- Aesthetics
- Vandalism



## Initial Feedback?

1. Questions/concerns?
2. Should we permit private companies to operate bike share in Bellevue in 2018?



***“Advance the implementation of Bellevue’s planned Bicycle Priority Corridors to facilitate continuous bicycle travel along a connected grid of safe facilities throughout the city and the region.”***

***- Council Program Principle(s)***



**RAPID**



**LOW-COST**



**ASSESSMENT**





Chicago



Austin



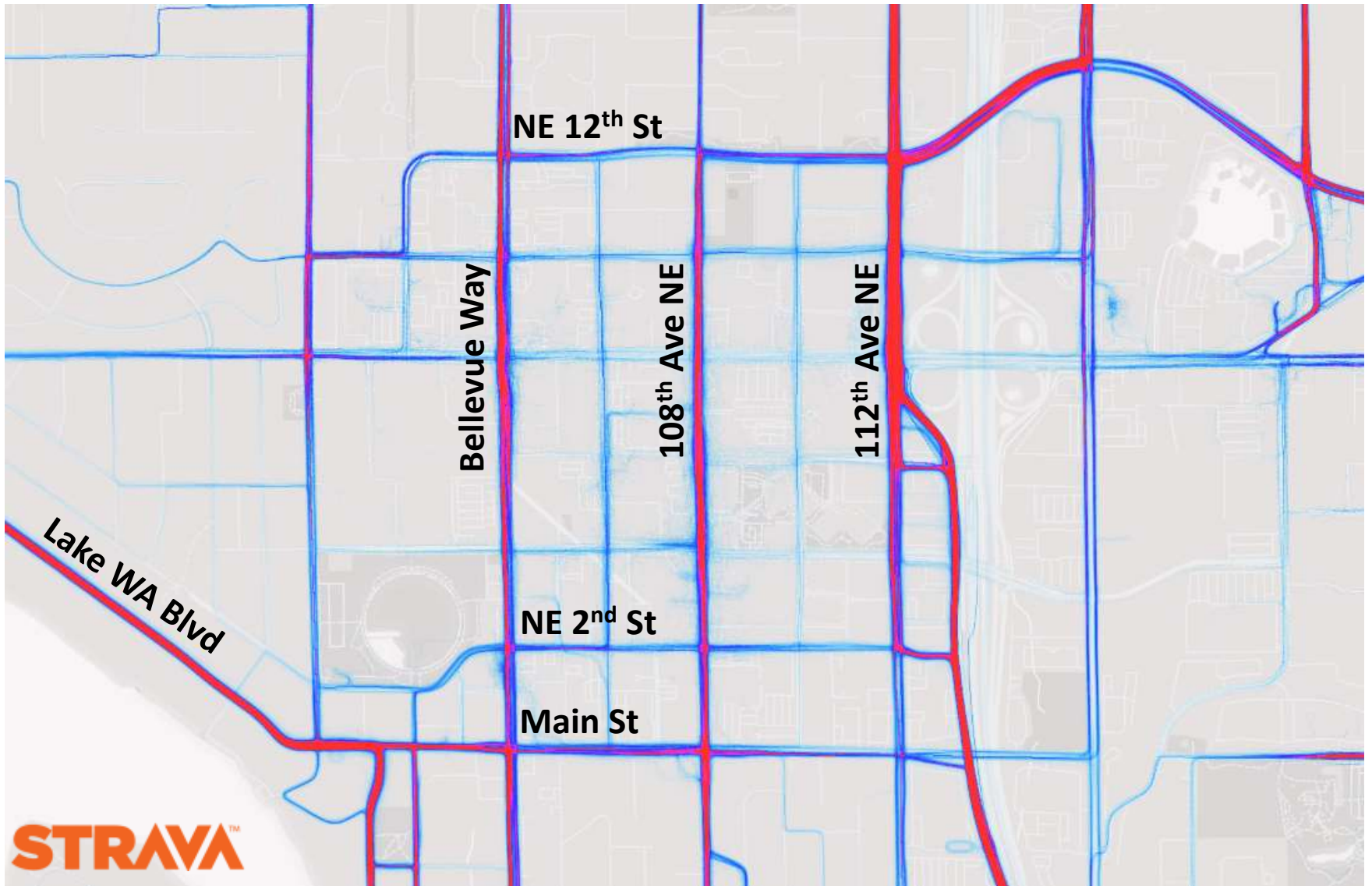
Washington, DC



Pittsburgh



# Demonstration Bikeway Project





## 2017-18 Bike Projects:

- 108th Ave NE/SE
- 112th Ave NE
- NE 12th St
- NE 24th St
- SE 8th St

## Downtown Bicycle Network Candidate Corridors:

### *North-South*

- 100th Ave NE
- 106th Ave NE
- 108th Ave NE
- 114th Ave

### *East-West*

- Main St
- NE 2nd St
- NE 12th St





## Demonstration Bikeway Project Candidate Corridors:

- **108th Ave NE**  
Main St to NE 12th St
- **Main St**  
105th Ave to 112th Ave
- **NE 2nd St**  
106th Ave NE to 110th Ave NE
- **106th Ave NE**  
Main St to NE 12th St

## Candidate Demo Corridors

# Did we miss something?

## Bicycle Improvements

- Existing bike network connections
- High comfort bikeway
- Consistency with community feedback

## Street Use Impacts

- Travel lanes repurposed
- Turn lanes repurposed
- Changes to on-street parking
- Transit operation challenges

## Land Use

- Construction activity
- Driveways

**Next Steps: Share Assessment @ 10/26 BDA Meeting**



**Franz Loewenherz**

Transportation Department

[floewenherz@bellevuewa.gov](mailto:floewenherz@bellevuewa.gov)

**425-452-4077**