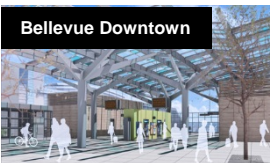




**Access Bellevue
East Link Project Update
May 30, 2018**

Cost & Schedule Snapshot

- **Baselined:** April 2015
- **Budget:** \$3.67 Billion (YOE)
- **Schedule:** Revenue Service in 2023
- **Status:**
 - As of April 30, ~30% Complete
 - All six civil contracts in active construction
 - Within Budget
 - On Schedule



Construction Progress

- Mercer Island Building Permit Issued
- Storm response and management on I-90
- Central Bellevue (E335) Stations Procurement Complete
- Tunnel progress
- Girders up in Bellevue
- Stormwater vault completion in Redmond



I-90 Seattle and Mercer Island



- WB I-90 Bridge Closure – post tensioning installation on June 29-30, July 6-7, TBD: July 20-21
- Rail delivery welding on Mercer Island starting this week
- Rainier Freeway Stop – closure and demolition (late September)







South Bellevue



- Bellevue Way – new roadway configuration (ongoing)
- 112th Ave SE ‘road over rail’ construction
- I-90 column construction; “form traveler”– nighttime work

Maintenance of Traffic – Bellevue Way

WEEKDAYS

April 2018–November 2018

A.M. PEAK HOUR: Two lanes heading toward downtown Bellevue
 6–10 a.m.¹ 

AS NEEDED: One lane in each direction
 10 a.m.–2 p.m. 

PEAK HOUR: Two lanes heading toward Seattle
 2 p.m.–6 p.m.² 

NIGHTTIME: All lanes open
 8 p.m.–6 a.m. 

January 2019–November 2019

DAYTIME / P.M. PEAK HOUR: Two lanes heading toward Seattle
 10 a.m.–6 p.m.² 

NIGHTTIME / A.M. PEAK HOUR: All lanes open
 8 p.m.–10 a.m. 

AS NEEDED: One lane in each direction
 10 a.m.–2 p.m. 

AREA AFFECTED



2020

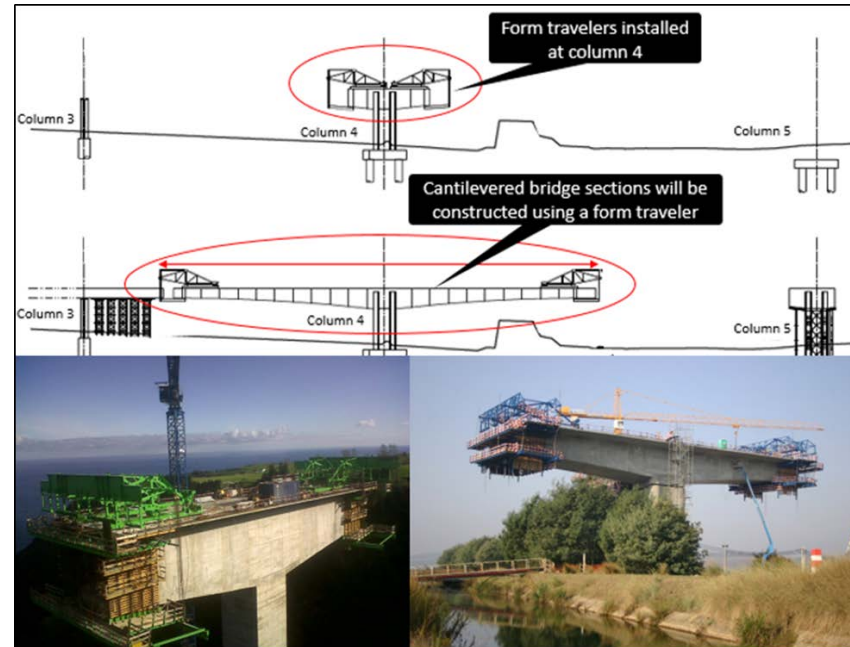
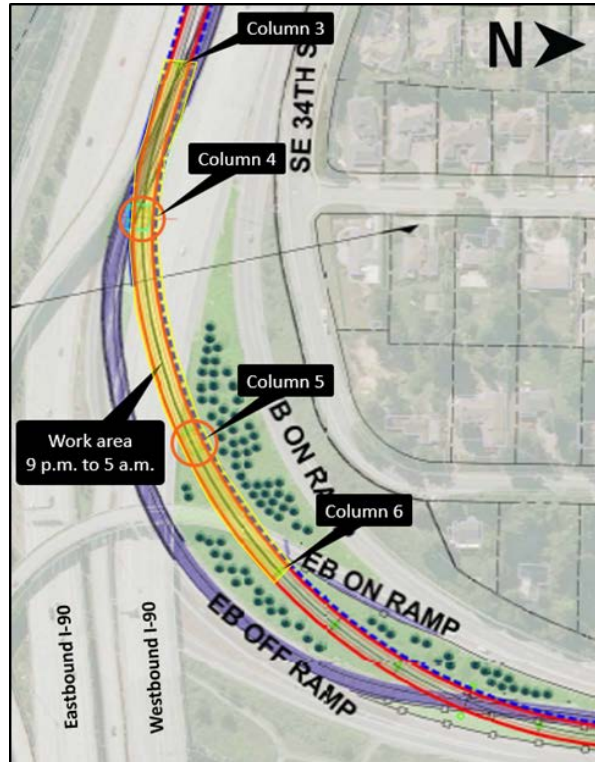
More info in a future alert

Maintenance of Traffic – 112th Ave SE

- Full weekend closures (June 2-3), others to be scheduled
- “Road over Rail” construction to start later this summer (after bypass road constructed)



Form Traveler







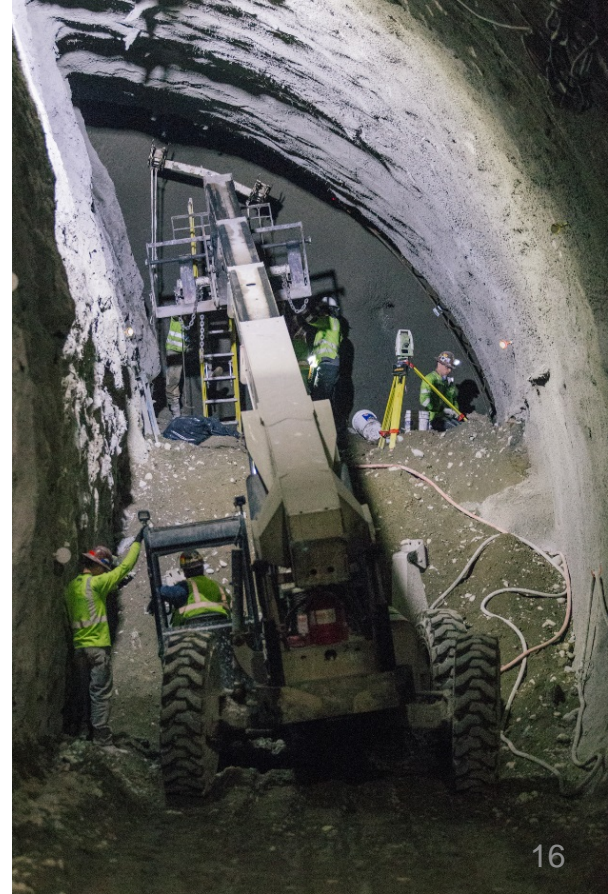


Downtown Bellevue tunnel



- Completion of tunneling this summer!

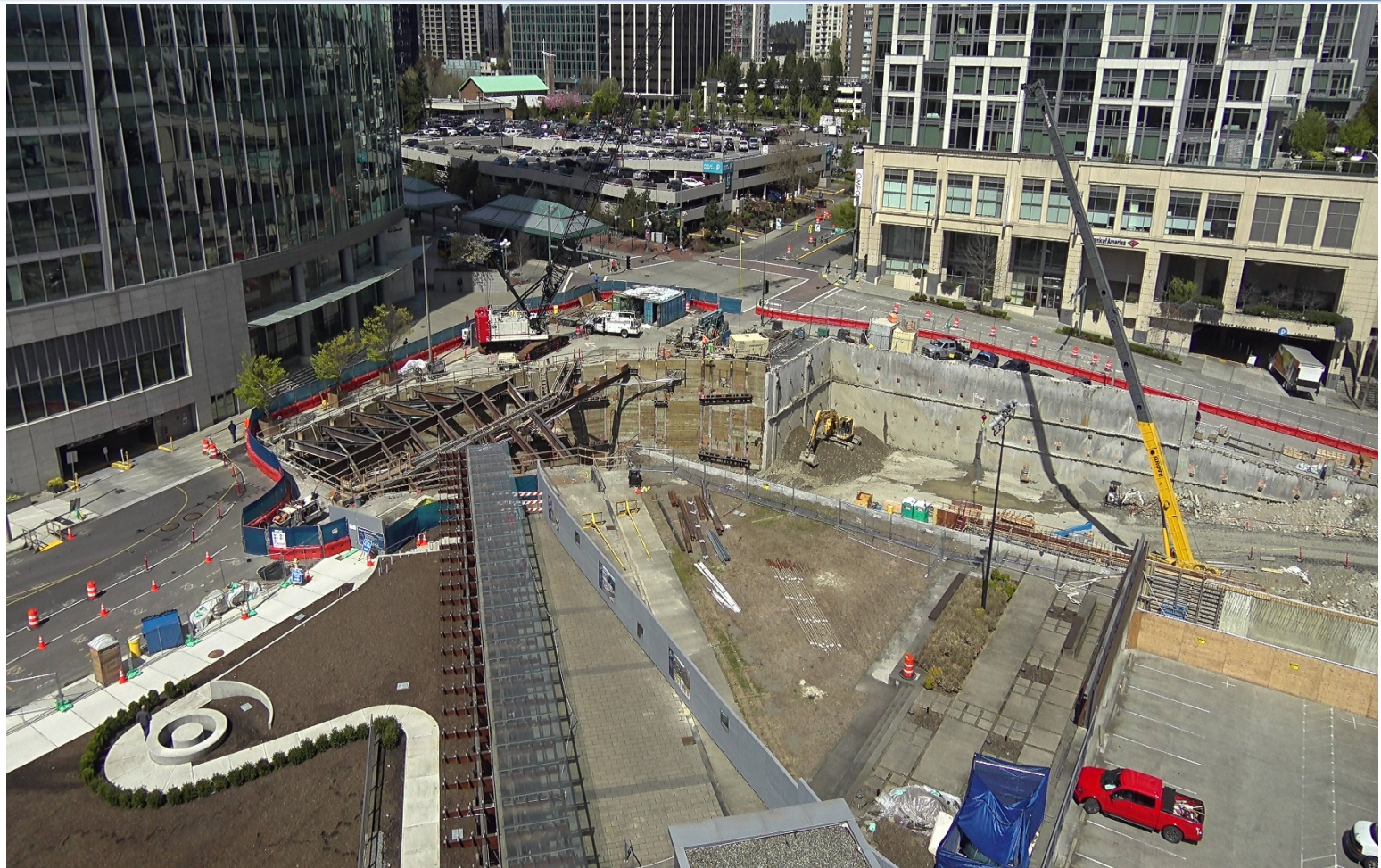




Central Bellevue



- 110th Avenue – lanes reopening in July (one lane in each direction)
- 110th/NE 6th (~July 14)
- I-405 nighttime closures ongoing and to be scheduled (~June 4th, 4 nights)
- Girder installation (2 nights):
 - 116th Avenue NE (~ June 13)
 - NE 8th (~June 15)





04/12/2018 18:49



BelRed



- 136th Place NE one-way conversion (ongoing)
- 130th mid-block closure (ongoing - 70 day closure)
- Spring Blvd closure (1 year closure ~July 9); between 130th and 134th
- 132nd closure

BelRed Maintenance of Traffic – 136th Place



BelRed Maintenance of Traffic – 130th Avenue NE







Overlake/Redmond



- Girder installations - SR 520 lanes closures
- NE 148th off ramp closure (work currently on hold)

We are all grieving the loss of Walter Burrows, the Kiewit foreman, and member of our East Link team, who tragically fell to his death early Tuesday morning while working on a construction site near Overlake.

Our thoughts and prayers are with the family of Walter Burrows, and the East Link team.







A close-up photograph of a white Sound Transit train. The train features a blue logo consisting of a stylized 'S' and 'T' above the text 'SOUNDTRANSIT'. Below the logo, there are several windows and a set of double doors. The lower portion of the train is decorated with a wavy pattern in shades of teal and dark blue. A semi-transparent grey bar is overlaid across the middle of the image, containing the text 'Thank You'.

SOUNDTRANSIT

Thank You