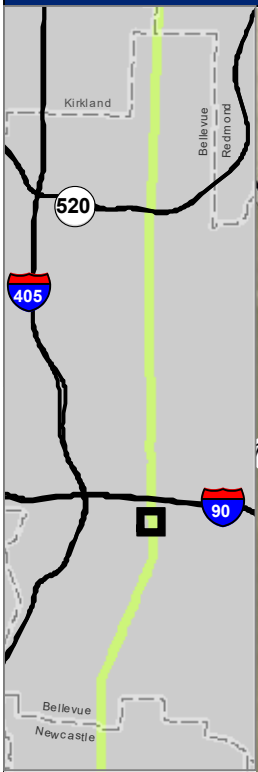
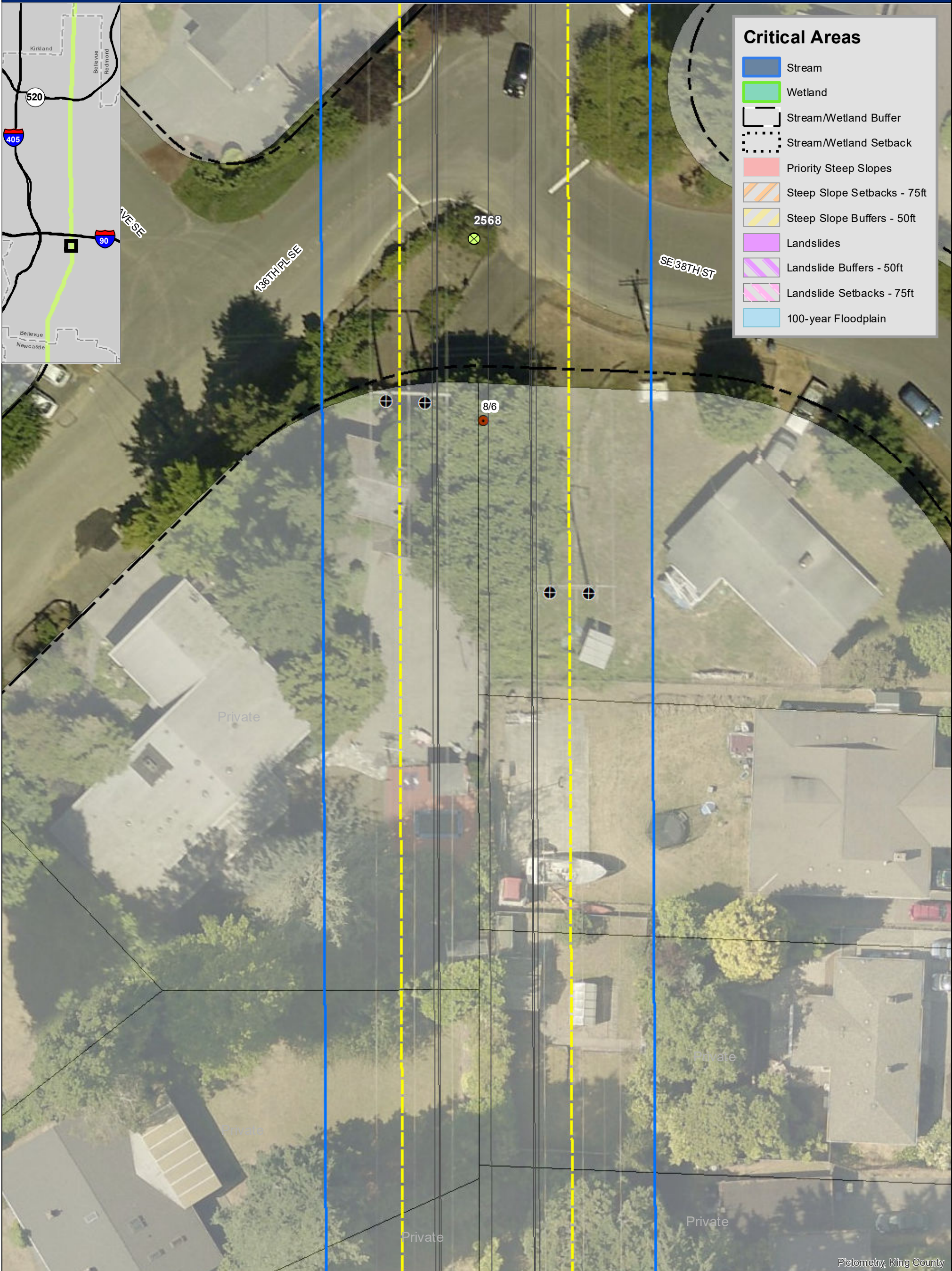


PSE EE230 - COB: PUBLIC TREE REMOVAL MAPS



### Critical Areas

- Stream
- Wetland
- Stream/Wetland Buffer
- Stream/Wetland Setback
- Priority Steep Slopes
- Steep Slope Setbacks - 75ft
- Steep Slope Buffers - 50ft
- Landslides
- Landslide Buffers - 50ft
- Landslide Setbacks - 75ft
- 100-year Floodplain



### Significant Trees to be Removed<sup>TWC</sup>

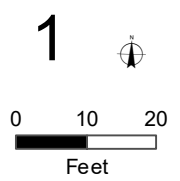
- City Owned
- Park
- Public ROW

### Parcel Ownership<sup>KC</sup>

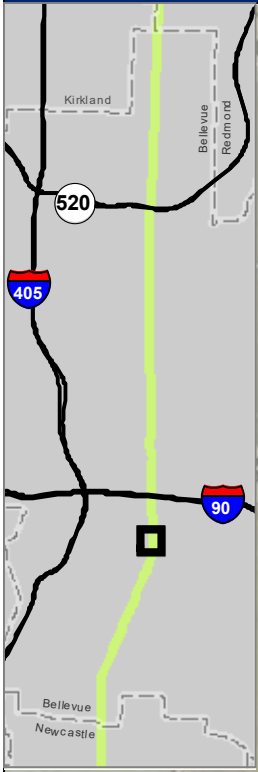
- City Owned Parcel
- Park
- Private/ Other Parcel
- Surveyed ROW

- Existing Easement Boundary<sup>PSE</sup>
- Wire Zone<sup>PSE</sup>
- Wires<sup>PSE</sup>
- Proposed Pole Footprints<sup>PSE</sup>

- Existing Poles to Remain<sup>PSE</sup>
- Existing Poles to be Removed<sup>PSE</sup>
- City Limit<sup>KC</sup>

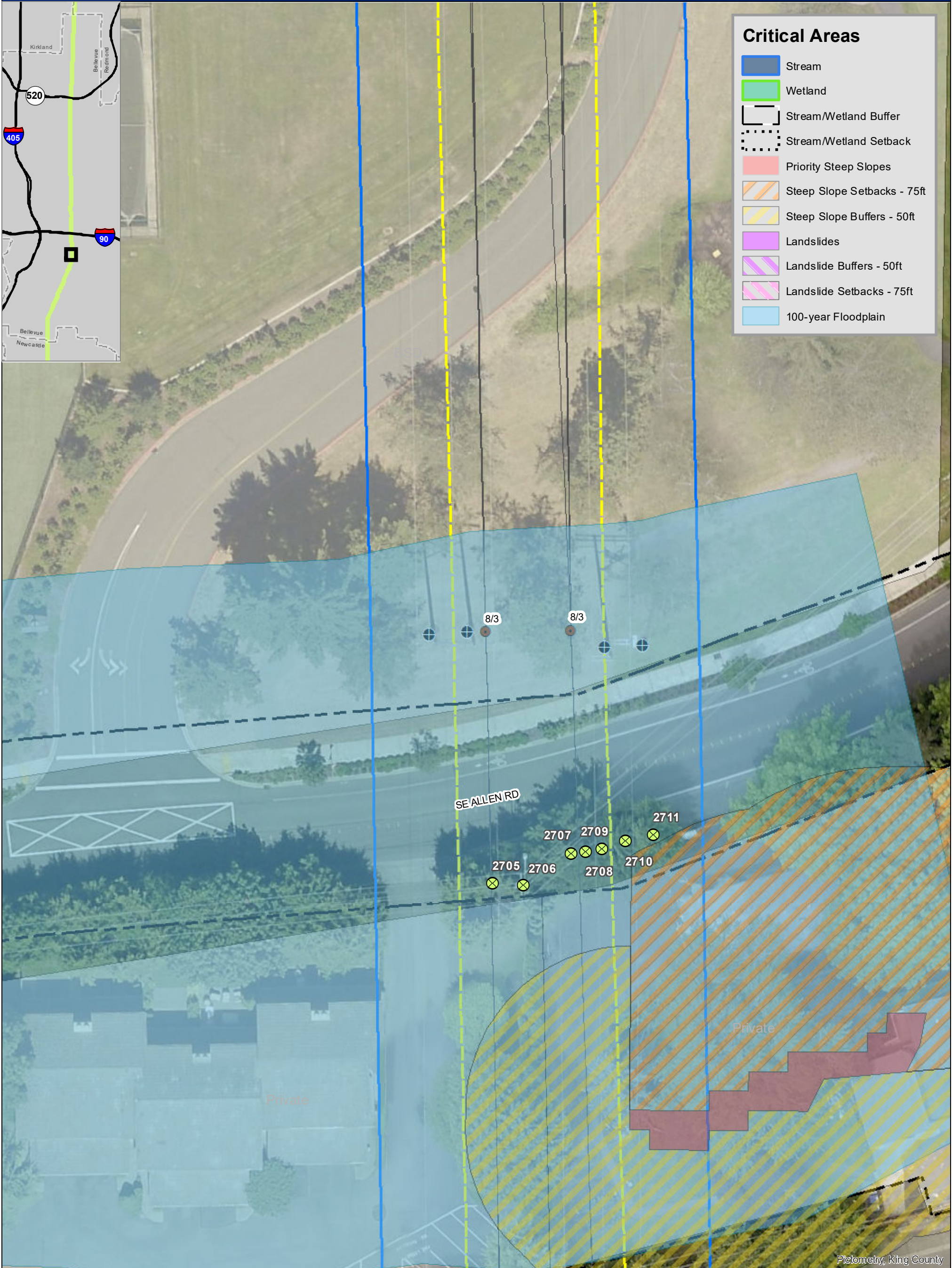


PSE EE230 - COB: PUBLIC TREE REMOVAL MAPS



### Critical Areas

- Stream
- Wetland
- Stream/Wetland Buffer
- Stream/Wetland Setback
- Priority Steep Slopes
- Steep Slope Setbacks - 75ft
- Steep Slope Buffers - 50ft
- Landslides
- Landslide Buffers - 50ft
- Landslide Setbacks - 75ft
- 100-year Floodplain

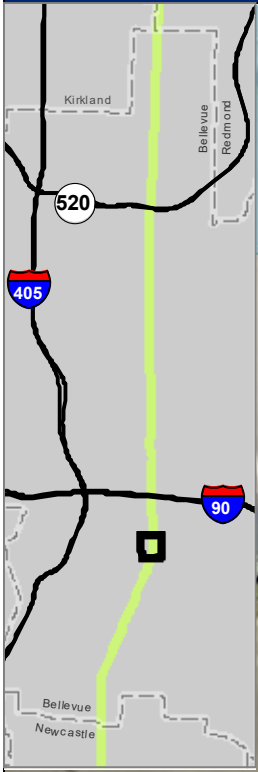


Pictometry, King County

<p><b>Significant Trees to be Removed<sup>TWC</sup></b></p> <ul style="list-style-type: none"> <li>City Owned</li> <li>Park</li> <li>Public ROW</li> </ul>	<p><b>Parcel Ownership<sup>KC</sup></b></p> <ul style="list-style-type: none"> <li>City Owned Parcel</li> <li>Park</li> <li>Private/ Other Parcel</li> <li>Surveyed ROW</li> </ul>	<ul style="list-style-type: none"> <li>Existing Easement Boundary<sup>PSE</sup></li> <li>Wire Zone<sup>PSE</sup></li> <li>Wires<sup>PSE</sup></li> <li>Proposed Pole Footprints<sup>PSE</sup></li> </ul>	<ul style="list-style-type: none"> <li>Existing Poles to Remain<sup>PSE</sup></li> <li>Existing Poles to be Removed<sup>PSE</sup></li> <li>City Limit<sup>KC</sup></li> </ul>	<p><b>2</b></p>
--	--	--	---	-----------------

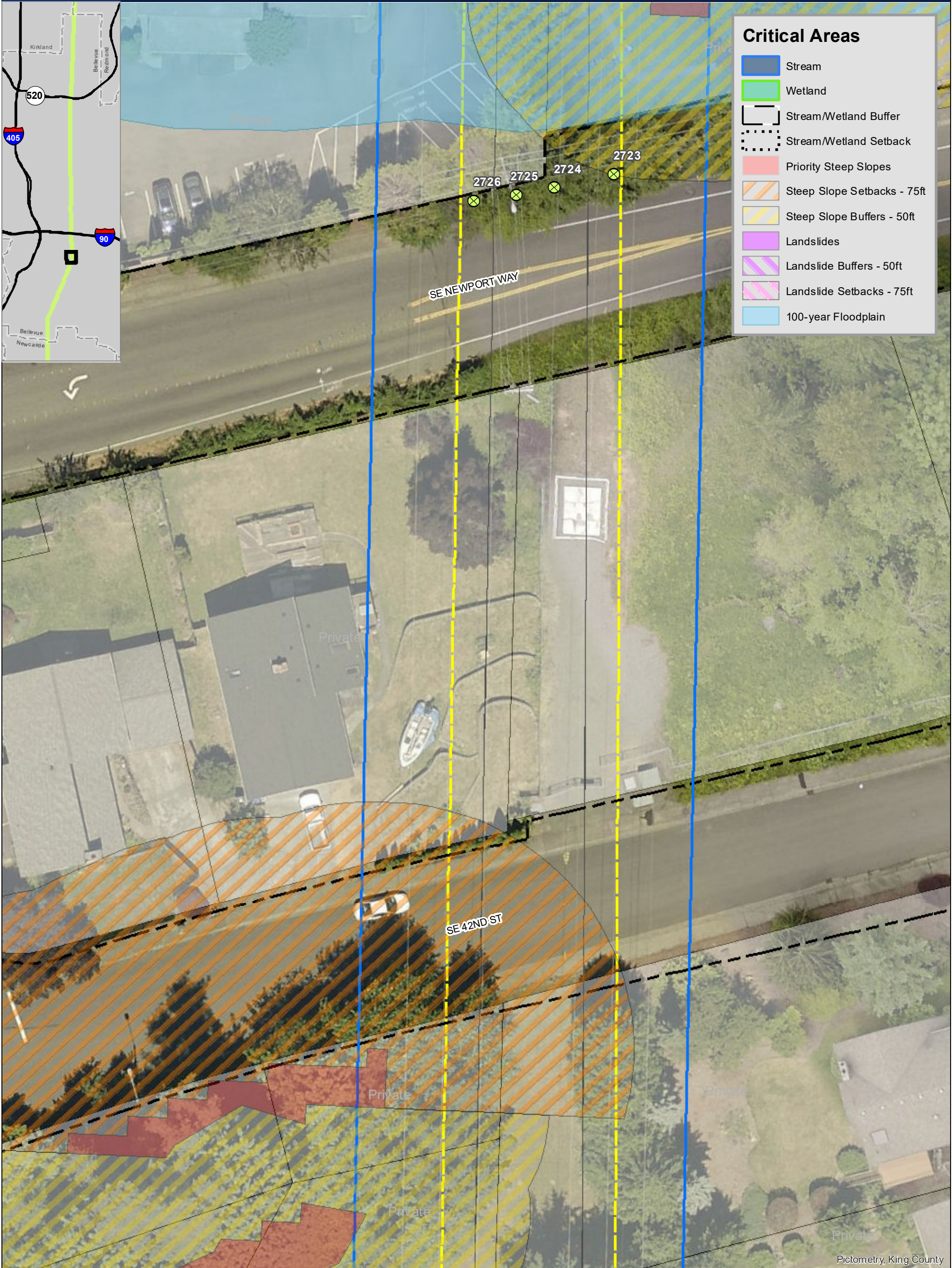
Data sources: Puget Sound Energy (PSE), The Watershed Company (TWC), City of Bellevue (COB), and King County (KC). Aerial imagery from PSE, 2011.

PSE EE230 - COB: PUBLIC TREE REMOVAL MAPS



### Critical Areas

- Stream
- Wetland
- Stream/Wetland Buffer
- Stream/Wetland Setback
- Priority Steep Slopes
- Steep Slope Setbacks - 75ft
- Steep Slope Buffers - 50ft
- Landslides
- Landslide Buffers - 50ft
- Landslide Setbacks - 75ft
- 100-year Floodplain

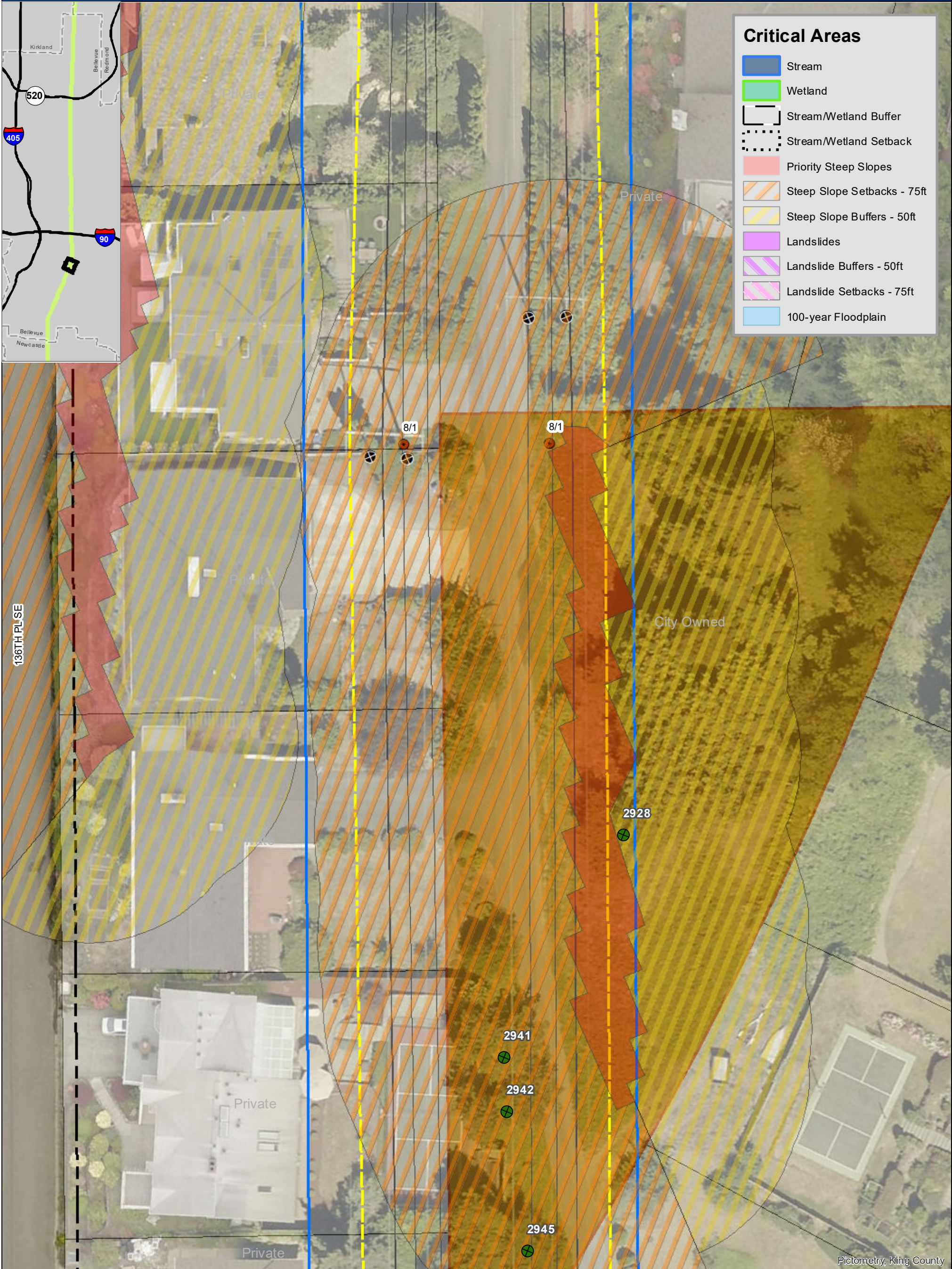


<p><b>Significant Trees to be Removed<sup>TWC</sup></b></p> <ul style="list-style-type: none"> <li><span style="display: inline-block; width: 10px; height: 10px; background-color: #008000; border: 1px solid black; margin-right: 5px;"></span> City Owned</li> <li><span style="display: inline-block; width: 10px; height: 10px; background-color: #90EE90; border: 1px solid black; margin-right: 5px;"></span> Park</li> <li><span style="display: inline-block; width: 10px; height: 10px; border: 1px dashed black; margin-right: 5px;"></span> Public ROW</li> </ul>	<p><b>Parcel Ownership<sup>KC</sup></b></p> <ul style="list-style-type: none"> <li><span style="display: inline-block; width: 15px; height: 10px; background-color: #FFA500; border: 1px solid black; margin-right: 5px;"></span> City Owned Parcel</li> <li><span style="display: inline-block; width: 15px; height: 10px; background-color: #32CD32; border: 1px solid black; margin-right: 5px;"></span> Park</li> <li><span style="display: inline-block; width: 15px; height: 10px; border: 1px solid black; margin-right: 5px;"></span> Private/ Other Parcel</li> <li><span style="display: inline-block; width: 15px; height: 10px; border-bottom: 2px solid black; margin-right: 5px;"></span> Surveyed ROW</li> </ul>	<p><b>Existing Easement Boundary<sup>PSE</sup></b></p> <ul style="list-style-type: none"> <li><span style="display: inline-block; width: 15px; height: 10px; border: 2px solid blue; margin-right: 5px;"></span> Existing Easement Boundary<sup>PSE</sup></li> <li><span style="display: inline-block; width: 15px; height: 10px; border: 2px dashed yellow; margin-right: 5px;"></span> Wire Zone<sup>PSE</sup></li> <li><span style="display: inline-block; width: 15px; height: 10px; border-bottom: 2px dashed black; margin-right: 5px;"></span> Wires<sup>PSE</sup></li> <li><span style="display: inline-block; width: 10px; height: 10px; background-color: #FF4500; border-radius: 50%; margin-right: 5px;"></span> Proposed Pole Footprints<sup>PSE</sup></li> </ul>	<p><b>Existing Poles to Remain<sup>PSE</sup></b></p> <ul style="list-style-type: none"> <li><span style="display: inline-block; width: 10px; height: 10px; background-color: black; border-radius: 50%; margin-right: 5px;"></span> Existing Poles to Remain<sup>PSE</sup></li> <li><span style="display: inline-block; width: 10px; height: 10px; border: 1px solid black; border-radius: 50%; margin-right: 5px;"></span> Existing Poles to be Removed<sup>PSE</sup></li> <li><span style="display: inline-block; width: 15px; height: 10px; border: 2px solid purple; margin-right: 5px;"></span> City Limit<sup>KC</sup></li> </ul>
---	---	--	---

3

0 10 20  
Feet

PSE EE230 - COB: PUBLIC TREE REMOVAL MAPS



### Critical Areas

- Stream
- Wetland
- Stream/Wetland Buffer
- Stream/Wetland Setback
- Priority Steep Slopes
- Steep Slope Setbacks - 75ft
- Steep Slope Buffers - 50ft
- Landslides
- Landslide Buffers - 50ft
- Landslide Setbacks - 75ft
- 100-year Floodplain

### Significant Trees to be Removed<sup>TWC</sup>

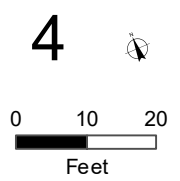
- City Owned
- Park
- Public ROW

### Parcel Ownership<sup>KC</sup>

- City Owned Parcel
- Park
- Private/ Other Parcel
- Surveyed ROW

- Existing Easement Boundary<sup>PSE</sup>
- Wire Zone<sup>PSE</sup>
- Wires<sup>PSE</sup>
- Proposed Pole Footprints<sup>PSE</sup>

- Existing Poles to Remain<sup>PSE</sup>
- Existing Poles to be Removed<sup>PSE</sup>
- City Limit<sup>KC</sup>



Data sources: Puget Sound Energy (PSE), The Watershed Company (TWC), City of Bellevue (COB), and King County (KC). Aerial imagery from PSE, 2011.

PSE EE230 - COB: PUBLIC TREE REMOVAL MAPS



### Critical Areas

- Stream
- Wetland
- Stream/Wetland Buffer
- Stream/Wetland Setback
- Priority Steep Slopes
- Steep Slope Setbacks - 75ft
- Steep Slope Buffers - 50ft
- Landslides
- Landslide Buffers - 50ft
- Landslide Setbacks - 75ft
- 100-year Floodplain

### Significant Trees to be Removed<sup>TWC</sup>

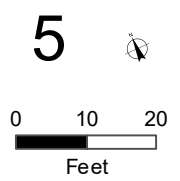
- City Owned
- Park
- Public ROW

### Parcel Ownership<sup>KC</sup>

- City Owned Parcel
- Park
- Private/ Other Parcel
- Surveyed ROW

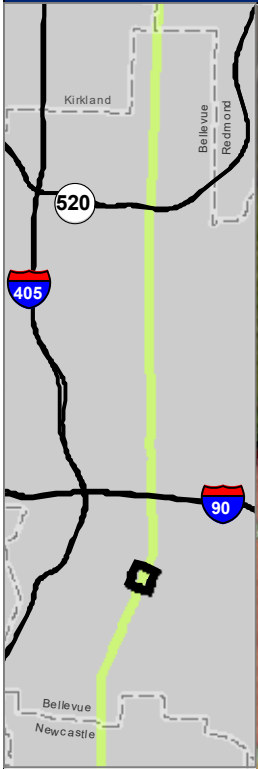
- Existing Easement Boundary<sup>PSE</sup>
- Wire Zone<sup>PSE</sup>
- Wires<sup>PSE</sup>
- Proposed Pole Footprints<sup>PSE</sup>

- Existing Poles to Remain<sup>PSE</sup>
- Existing Poles to be Removed<sup>PSE</sup>
- City Limit<sup>KC</sup>



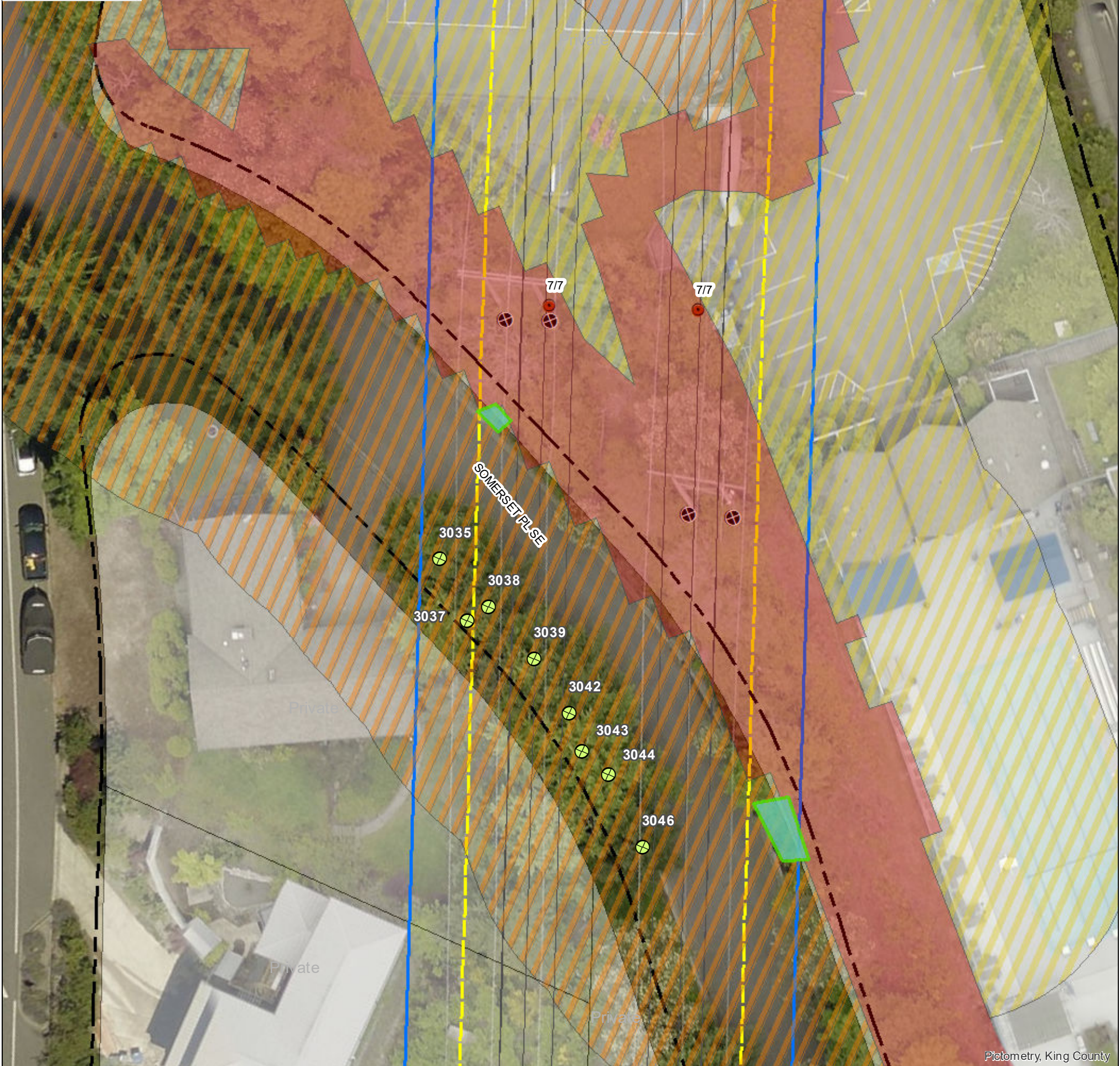
Data sources: Puget Sound Energy (PSE), The Watershed Company (TWC), City of Bellevue (COB), and King County (KC). Aerial imagery from PSE, 2011.

PSE EE230 - COB: PUBLIC TREE REMOVAL MAPS



### Critical Areas

- Stream
- Wetland
- Stream/Wetland Buffer
- Stream/Wetland Setback
- Priority Steep Slopes
- Steep Slope Setbacks - 75ft
- Steep Slope Buffers - 50ft
- Landslides
- Landslide Buffers - 50ft
- Landslide Setbacks - 75ft
- 100-year Floodplain

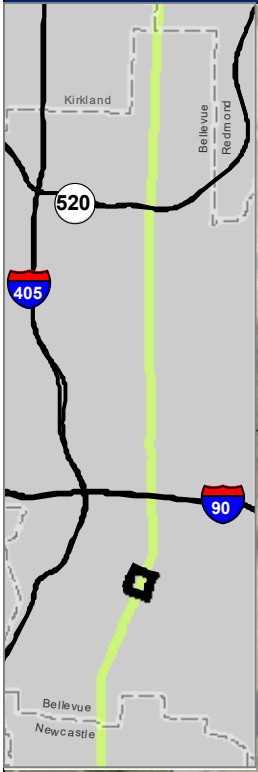


Pictometry, King County

<p><b>Significant Trees to be Removed<sup>TWC</sup></b></p> <ul style="list-style-type: none"> <li>City Owned</li> <li>Park</li> <li>Public ROW</li> </ul>	<p><b>Parcel Ownership<sup>KC</sup></b></p> <ul style="list-style-type: none"> <li>City Owned Parcel</li> <li>Park</li> <li>Private/ Other Parcel</li> <li>Surveyed ROW</li> </ul>	<ul style="list-style-type: none"> <li>Existing Easement Boundary<sup>PSE</sup></li> <li>Wire Zone<sup>PSE</sup></li> <li>Wires<sup>PSE</sup></li> <li>Proposed Pole Footprints<sup>PSE</sup></li> </ul>	<ul style="list-style-type: none"> <li>Existing Poles to Remain<sup>PSE</sup></li> <li>Existing Poles to be Removed<sup>PSE</sup></li> <li>City Limit<sup>KC</sup></li> </ul>	<p><b>6</b></p> <p>0 10 20 Feet</p>
--	--	--	---	---

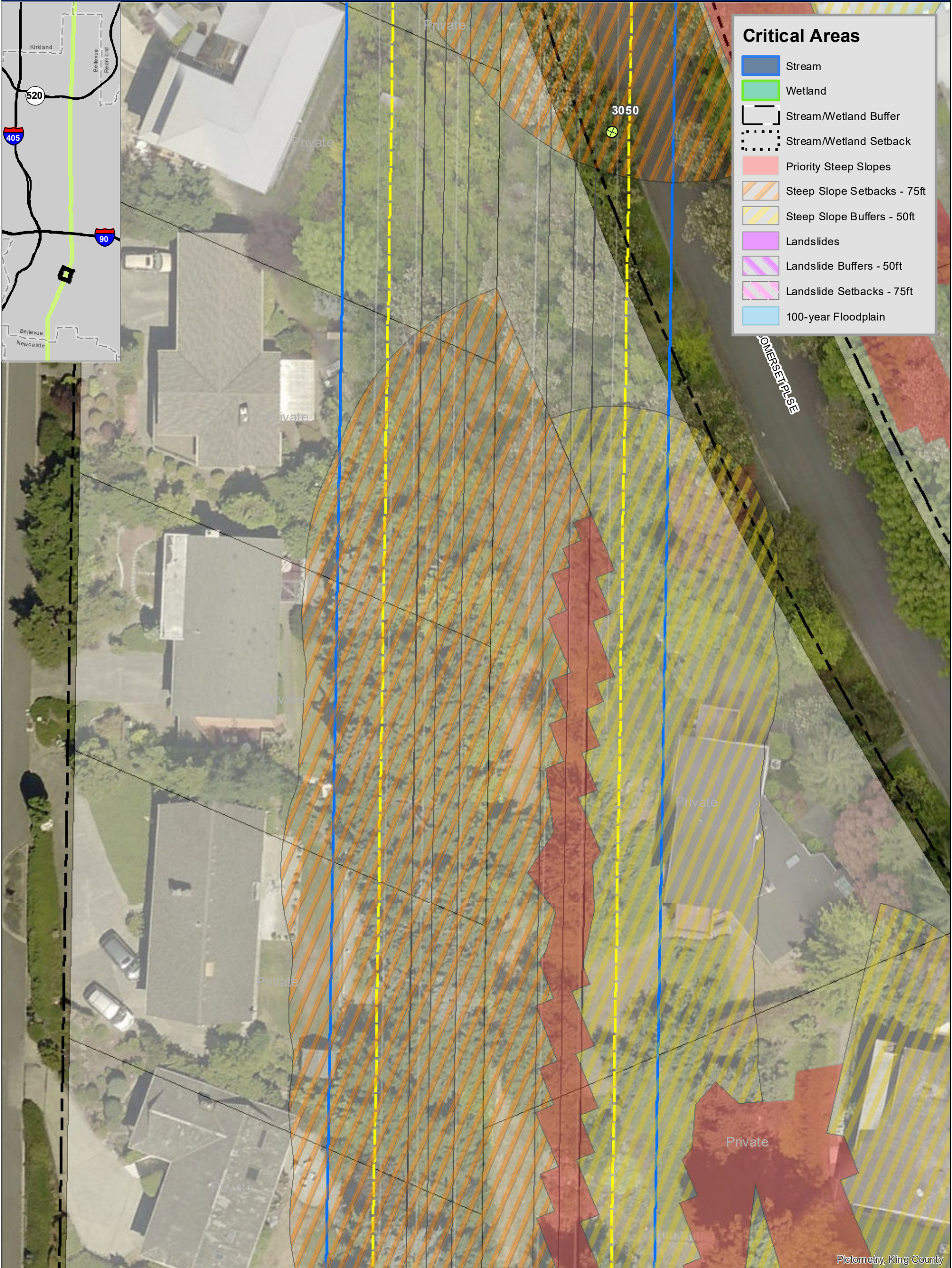
Data sources: Puget Sound Energy (PSE), The Watershed Company (TWC), City of Bellevue (COB), and King County (KC). Aerial imagery from PSE, 2011.

PSE EE230 - COB: PUBLIC TREE REMOVAL MAPS



### Critical Areas

- Stream
- Wetland
- Stream/Wetland Buffer
- Stream/Wetland Setback
- Priority Steep Slopes
- Steep Slope Setbacks - 75ft
- Steep Slope Buffers - 50ft
- Landslides
- Landslide Buffers - 50ft
- Landslide Setbacks - 75ft
- 100-year Floodplain



Pictometry, King County

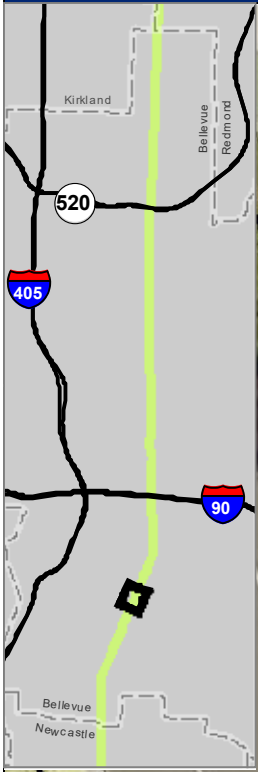
<p><b>Significant Trees to be Removed<sup>TWC</sup></b></p> <ul style="list-style-type: none"> <li>City Owned</li> <li>Park</li> <li>Public ROW</li> </ul>	<p><b>Parcel Ownership<sup>KC</sup></b></p> <ul style="list-style-type: none"> <li>City Owned Parcel</li> <li>Park</li> <li>Private/ Other Parcel</li> <li>Surveyed ROW</li> </ul>	<ul style="list-style-type: none"> <li>Existing Easement Boundary<sup>PSE</sup></li> <li>Wire Zone<sup>PSE</sup></li> <li>Wires<sup>PSE</sup></li> <li>Proposed Pole Footprints<sup>PSE</sup></li> </ul>	<ul style="list-style-type: none"> <li>Existing Poles to Remain<sup>PSE</sup></li> <li>Existing Poles to be Removed<sup>PSE</sup></li> <li>City Limit<sup>KC</sup></li> </ul>
--	--	--	---

**7**

0 10 20  
Feet

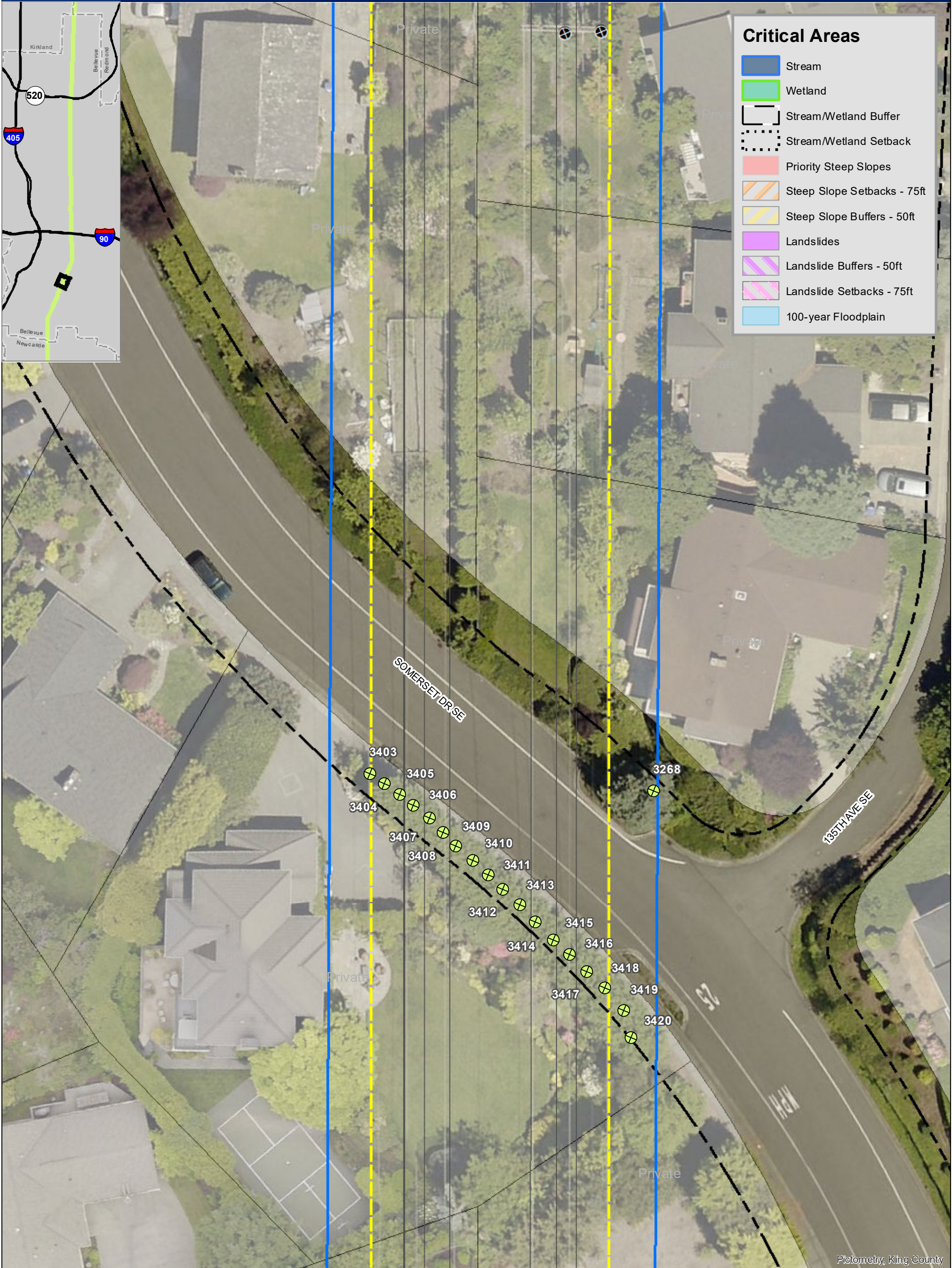
Data sources: Puget Sound Energy (PSE), The Watershed Company (TWC), City of Bellevue (COB), and King County (KC). Aerial imagery from PSE, 2011.

PSE EE230 - COB: PUBLIC TREE REMOVAL MAPS



### Critical Areas

- Stream
- Wetland
- Stream/Wetland Buffer
- Stream/Wetland Setback
- Priority Steep Slopes
- Steep Slope Setbacks - 75ft
- Steep Slope Buffers - 50ft
- Landslides
- Landslide Buffers - 50ft
- Landslide Setbacks - 75ft
- 100-year Floodplain



Pictometry, King County

**Significant Trees to be Removed<sup>TWC</sup>**

- City Owned
- Park
- Public ROW

**Parcel Ownership<sup>KC</sup>**

- City Owned Parcel
- Park
- Private/ Other Parcel
- Surveyed ROW

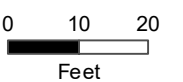
**Existing Easement Boundary<sup>PSE</sup>**

- Wire Zone<sup>PSE</sup>
- Wires<sup>PSE</sup>
- Proposed Pole Footprints<sup>PSE</sup>

**Existing Poles to Remain<sup>PSE</sup>**

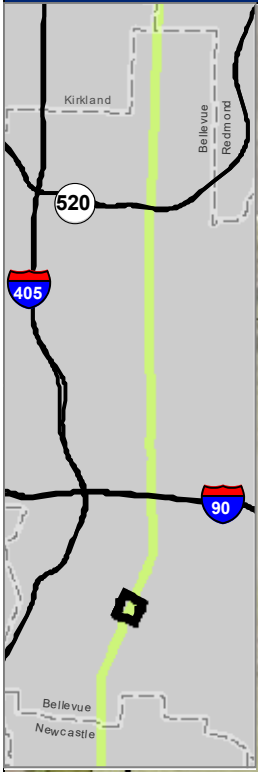
- Existing Poles to be Removed<sup>PSE</sup>
- City Limit<sup>KC</sup>

8



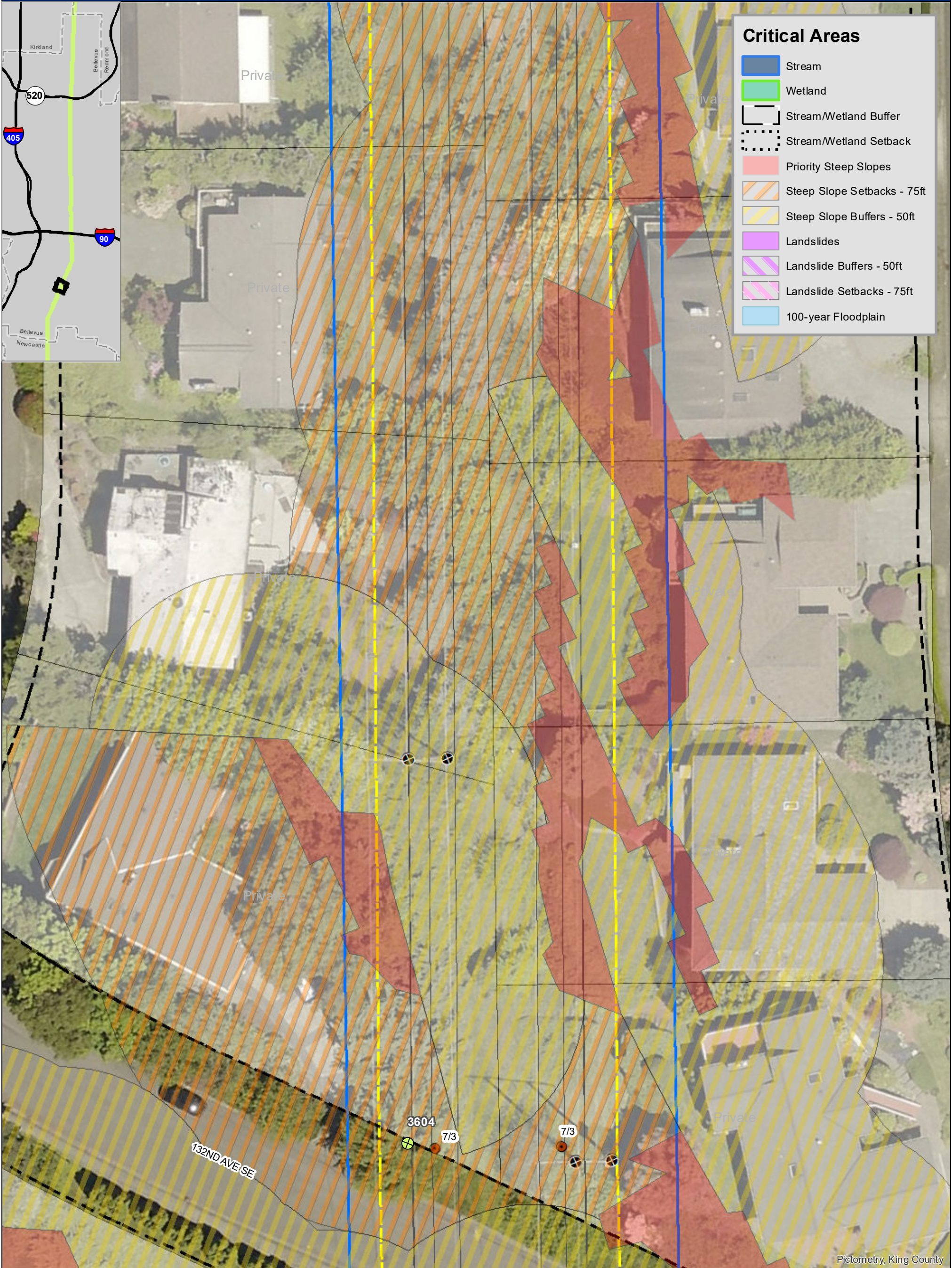


PSE EE230 - COB: PUBLIC TREE REMOVAL MAPS



### Critical Areas

- Stream
- Wetland
- Stream/Wetland Buffer
- Stream/Wetland Setback
- Priority Steep Slopes
- Steep Slope Setbacks - 75ft
- Steep Slope Buffers - 50ft
- Landslides
- Landslide Buffers - 50ft
- Landslide Setbacks - 75ft
- 100-year Floodplain



Pictometry, King County

<p><b>Significant Trees to be Removed<sup>TWC</sup></b></p> <ul style="list-style-type: none"> <li><span style="display: inline-block; width: 10px; height: 10px; background-color: green; border: 1px solid black; border-radius: 50%;"></span> City Owned</li> <li><span style="display: inline-block; width: 10px; height: 10px; background-color: lightgreen; border: 1px solid black; border-radius: 50%;"></span> Park</li> <li><span style="display: inline-block; width: 10px; height: 10px; background-color: yellow; border: 1px solid black; border-radius: 50%;"></span> Public ROW</li> </ul>	<p><b>Parcel Ownership<sup>KC</sup></b></p> <ul style="list-style-type: none"> <li><span style="display: inline-block; width: 15px; height: 10px; background-color: orange;"></span> City Owned Parcel</li> <li><span style="display: inline-block; width: 15px; height: 10px; background-color: lightgreen;"></span> Park</li> <li><span style="display: inline-block; width: 15px; height: 10px; border: 1px solid black;"></span> Private/ Other Parcel</li> <li><span style="display: inline-block; width: 15px; height: 10px; border-bottom: 2px solid black;"></span> Surveyed ROW</li> </ul>	<ul style="list-style-type: none"> <li><span style="display: inline-block; width: 15px; height: 10px; border: 1px solid blue;"></span> Existing Easement Boundary<sup>PSE</sup></li> <li><span style="display: inline-block; width: 15px; height: 10px; border: 2px dashed yellow;"></span> Wire Zone<sup>PSE</sup></li> <li><span style="display: inline-block; width: 15px; height: 10px; border-bottom: 1px dashed black;"></span> Wires<sup>PSE</sup></li> <li><span style="display: inline-block; width: 10px; height: 10px; background-color: orange; border-radius: 50%;"></span> Proposed Pole Footprints<sup>PSE</sup></li> </ul>	<ul style="list-style-type: none"> <li><span style="display: inline-block; width: 10px; height: 10px; background-color: black; border-radius: 50%;"></span> Existing Poles to Remain<sup>PSE</sup></li> <li><span style="display: inline-block; width: 10px; height: 10px; background-color: black; border-radius: 50%; border: 1px solid black;"></span> Existing Poles to be Removed<sup>PSE</sup></li> <li><span style="display: inline-block; width: 15px; height: 10px; border: 2px solid purple;"></span> City Limit<sup>KC</sup></li> </ul>
--	---	--	--

9

Data sources: Puget Sound Energy (PSE), The Watershed Company (TWC), City of Bellevue (COB), and King County (KC). Aerial imagery from PSE, 2011.

PSE EE230 - COB: PUBLIC TREE REMOVAL MAPS



### Critical Areas

- Stream
- Wetland
- Stream/Wetland Buffer
- Stream/Wetland Setback
- Priority Steep Slopes
- Steep Slope Setbacks - 75ft
- Steep Slope Buffers - 50ft
- Landslides
- Landslide Buffers - 50ft
- Landslide Setbacks - 75ft
- 100-year Floodplain

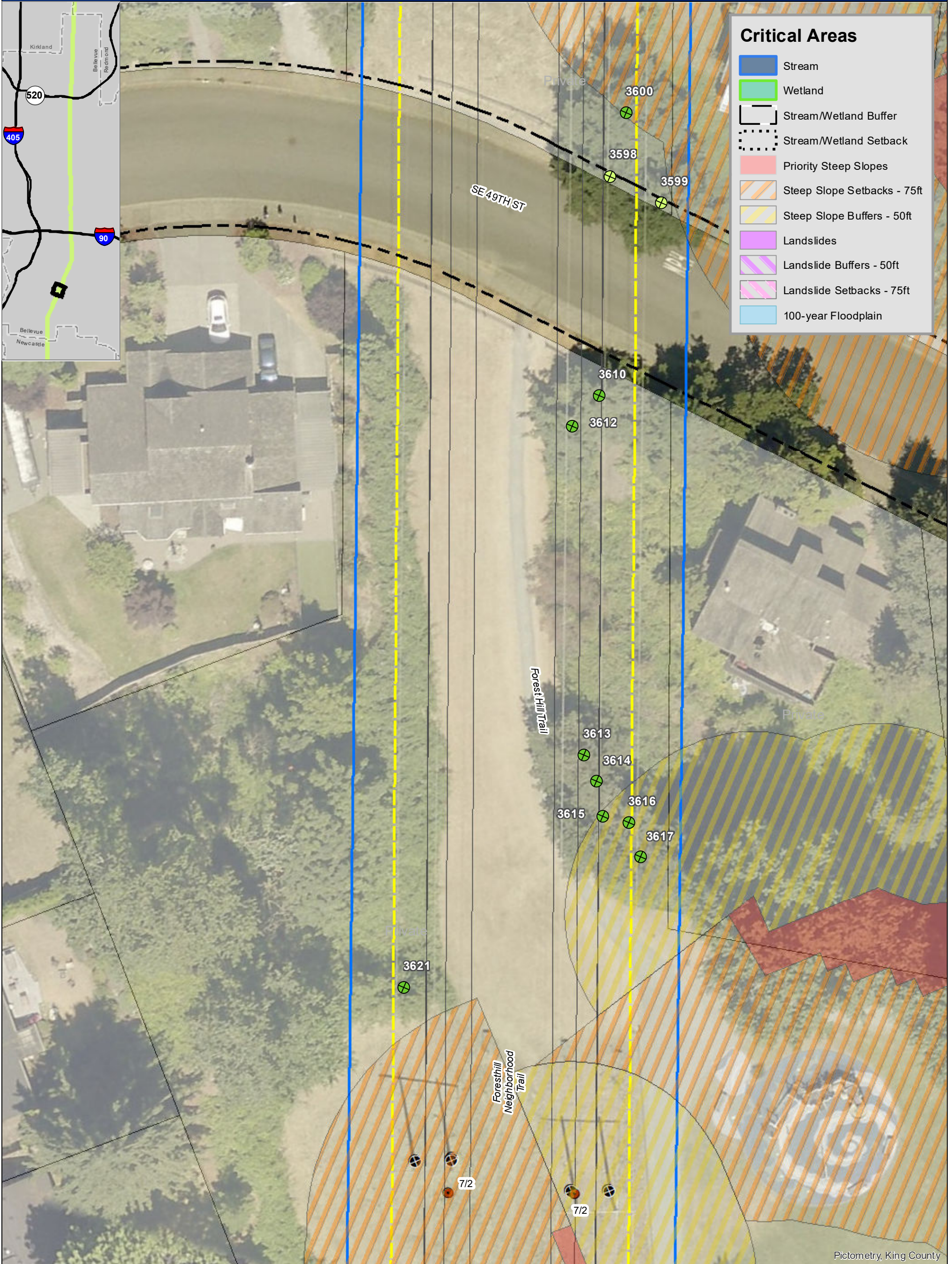
<p><b>Significant Trees to be Removed<sup>TWC</sup></b></p> <ul style="list-style-type: none"> <li><span style="display: inline-block; width: 10px; height: 10px; background-color: #008000; border: 1px solid black; margin-right: 5px;"></span> City Owned</li> <li><span style="display: inline-block; width: 10px; height: 10px; background-color: #90EE90; border: 1px solid black; margin-right: 5px;"></span> Park</li> <li><span style="display: inline-block; width: 10px; height: 10px; border: 1px solid black; margin-right: 5px;"></span> Public ROW</li> </ul>	<p><b>Parcel Ownership<sup>KC</sup></b></p> <ul style="list-style-type: none"> <li><span style="display: inline-block; width: 15px; height: 10px; background-color: #FF8C00; border: 1px solid black; margin-right: 5px;"></span> City Owned Parcel</li> <li><span style="display: inline-block; width: 15px; height: 10px; background-color: #90EE90; border: 1px solid black; margin-right: 5px;"></span> Park</li> <li><span style="display: inline-block; width: 15px; height: 10px; border: 1px solid black; margin-right: 5px;"></span> Private/ Other Parcel</li> <li><span style="display: inline-block; width: 15px; height: 10px; border-bottom: 2px solid black; margin-right: 5px;"></span> Surveyed ROW</li> </ul>	<ul style="list-style-type: none"> <li><span style="display: inline-block; width: 15px; height: 10px; border: 2px solid blue; margin-right: 5px;"></span> Existing Easement Boundary<sup>PSE</sup></li> <li><span style="display: inline-block; width: 15px; height: 10px; border: 2px dashed yellow; margin-right: 5px;"></span> Wire Zone<sup>PSE</sup></li> <li><span style="display: inline-block; width: 15px; height: 10px; border-bottom: 2px dashed black; margin-right: 5px;"></span> Wires<sup>PSE</sup></li> <li><span style="display: inline-block; width: 10px; height: 10px; background-color: #FF8C00; border-radius: 50%; margin-right: 5px;"></span> Proposed Pole Footprints<sup>PSE</sup></li> </ul>	<ul style="list-style-type: none"> <li><span style="display: inline-block; width: 10px; height: 10px; background-color: black; border-radius: 50%; margin-right: 5px;"></span> Existing Poles to Remain<sup>PSE</sup></li> <li><span style="display: inline-block; width: 10px; height: 10px; border: 1px solid black; border-radius: 50%; margin-right: 5px;"></span> Existing Poles to be Removed<sup>PSE</sup></li> <li><span style="display: inline-block; width: 15px; height: 10px; border: 2px solid purple; margin-right: 5px;"></span> City Limit<sup>KC</sup></li> </ul>
--	---	---	--

**10**

0 10 20  
Feet

Data sources: Puget Sound Energy (PSE), The Watershed Company (TWC), City of Bellevue (COB), and King County (KC). Aerial imagery from PSE, 2011.

PSE EE230 - COB: PUBLIC TREE REMOVAL MAPS



### Critical Areas

- Stream
- Wetland
- Stream/Wetland Buffer
- Stream/Wetland Setback
- Priority Steep Slopes
- Steep Slope Setbacks - 75ft
- Steep Slope Buffers - 50ft
- Landslides
- Landslide Buffers - 50ft
- Landslide Setbacks - 75ft
- 100-year Floodplain

### Significant Trees to be Removed<sup>TWC</sup>

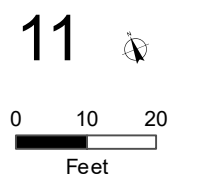
- City Owned
- Park
- Public ROW

### Parcel Ownership<sup>KC</sup>

- City Owned Parcel
- Park
- Private/ Other Parcel
- Surveyed ROW

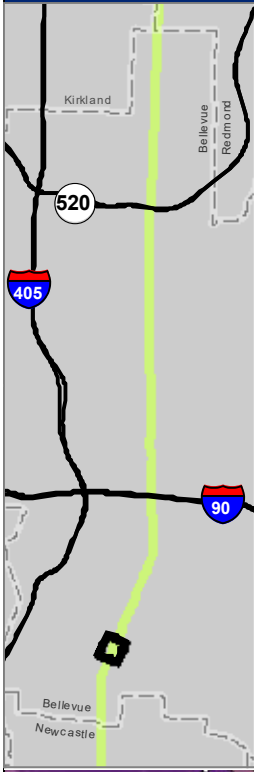
- Existing Easement Boundary<sup>PSE</sup>
- Wire Zone<sup>PSE</sup>
- Wires<sup>PSE</sup>
- Proposed Pole Footprints<sup>PSE</sup>

- Existing Poles to Remain<sup>PSE</sup>
- Existing Poles to be Removed<sup>PSE</sup>
- City Limit<sup>KC</sup>



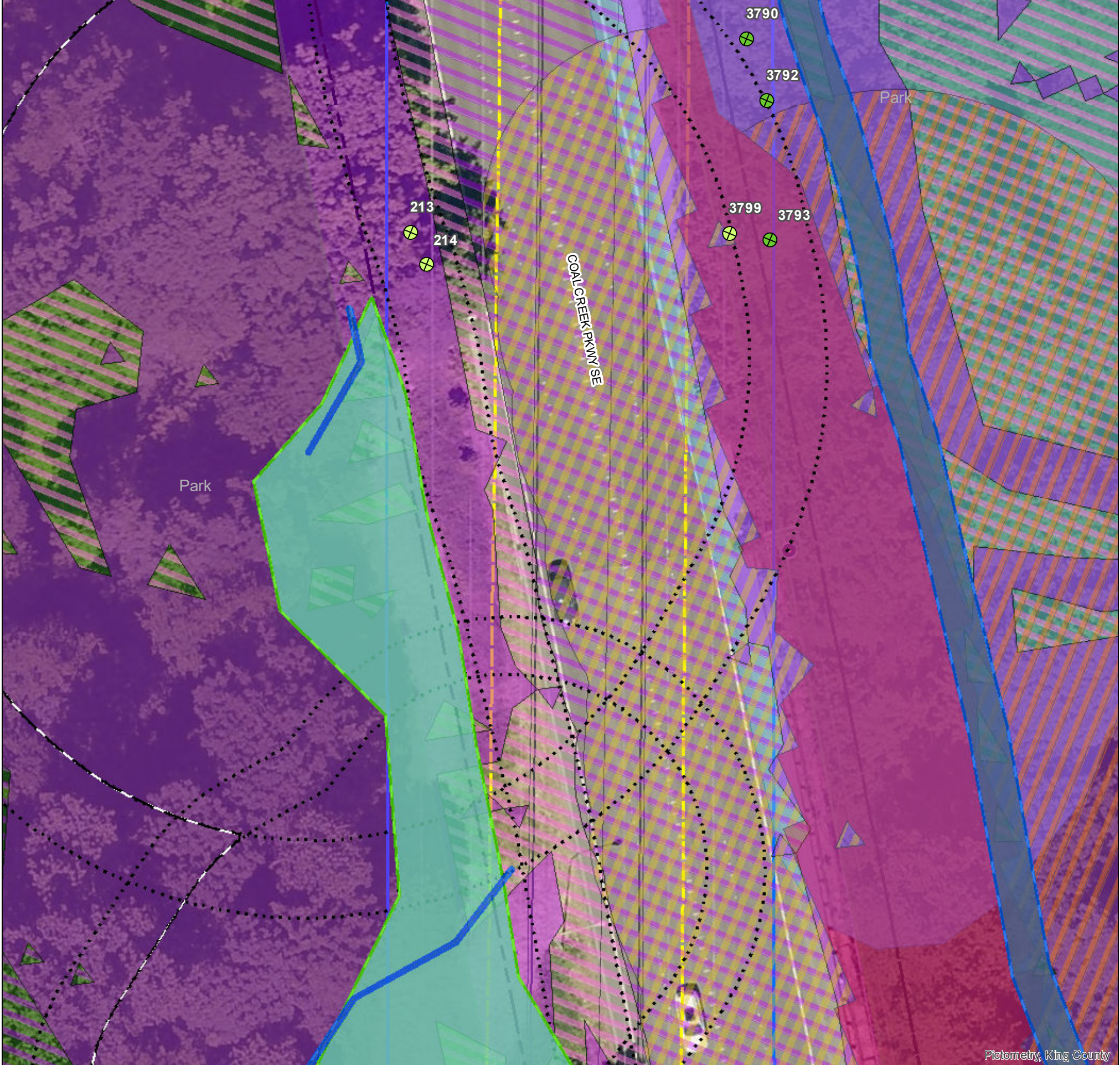
Data sources: Puget Sound Energy (PSE), The Watershed Company (TWC), City of Bellevue (COB), and King County (KC). Aerial imagery from PSE, 2011.

PSE EE230 - COB: PUBLIC TREE REMOVAL MAPS



### Critical Areas

- Stream
- Wetland
- Stream/Wetland Buffer
- Stream/Wetland Setback
- Priority Steep Slopes
- Steep Slope Setbacks - 75ft
- Steep Slope Buffers - 50ft
- Landslides
- Landslide Buffers - 50ft
- Landslide Setbacks - 75ft
- 100-year Floodplain



Pictometry, King County

Significant Trees to be Removed<sup>TWC</sup>

- City Owned
- Park
- Public ROW

Parcel Ownership<sup>KC</sup>

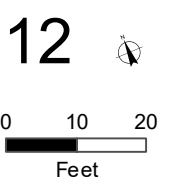
- City Owned Parcel
- Park
- Private/ Other Parcel
- Surveyed ROW

Existing Easement Boundary<sup>PSE</sup>

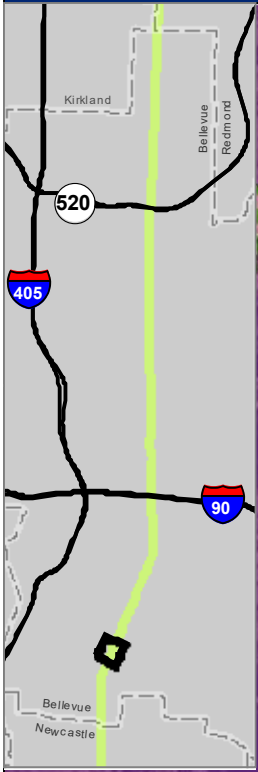
- Wire Zone<sup>PSE</sup>
- Wires<sup>PSE</sup>
- Proposed Pole Footprints<sup>PSE</sup>

Existing Poles to Remain<sup>PSE</sup>

- Existing Poles to be Removed<sup>PSE</sup>
- City Limit<sup>KC</sup>

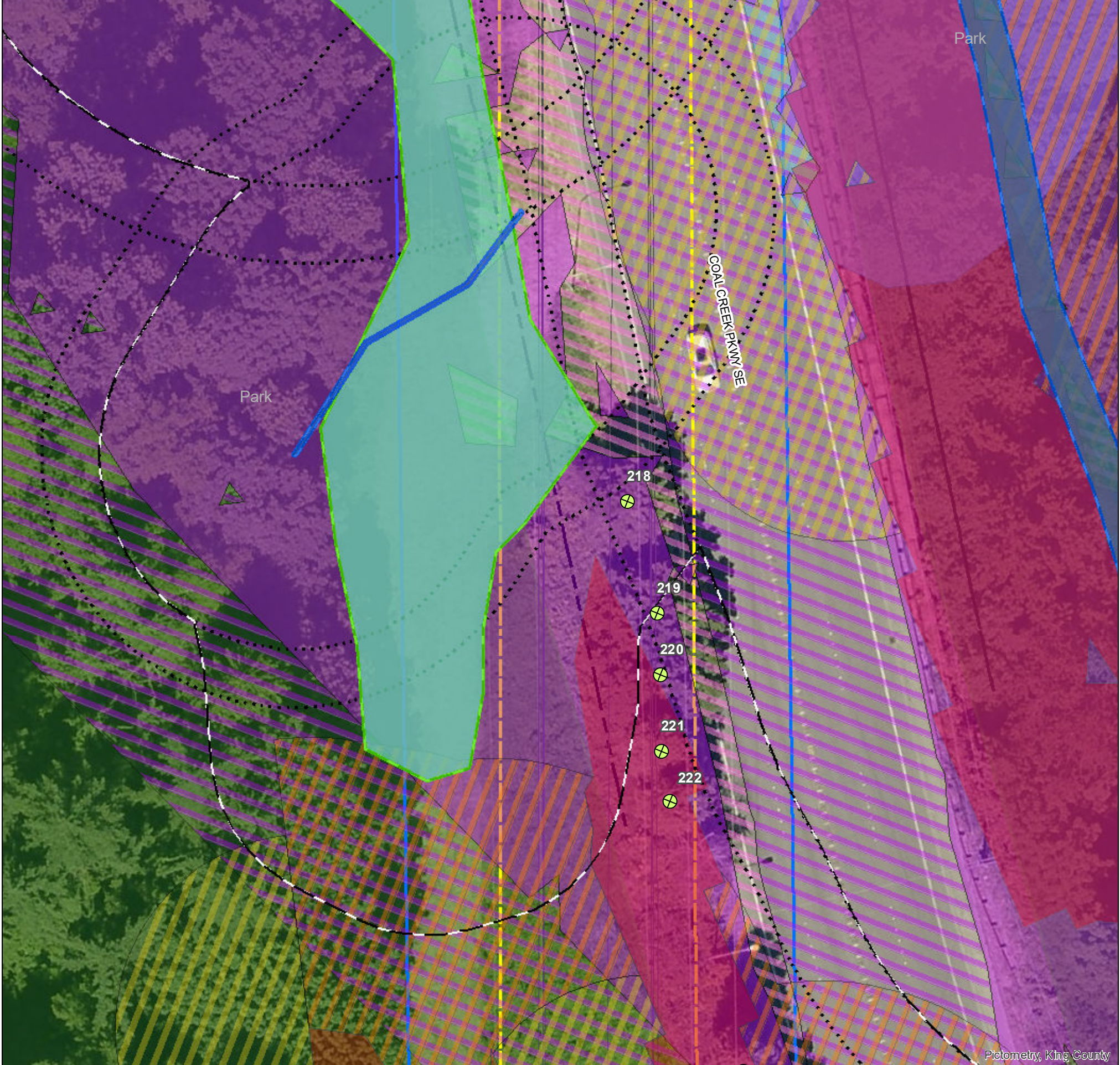


PSE EE230 - COB: PUBLIC TREE REMOVAL MAPS



### Critical Areas

- Stream
- Wetland
- Stream/Wetland Buffer
- Stream/Wetland Setback
- Priority Steep Slopes
- Steep Slope Setbacks - 75ft
- Steep Slope Buffers - 50ft
- Landslides
- Landslide Buffers - 50ft
- Landslide Setbacks - 75ft
- 100-year Floodplain



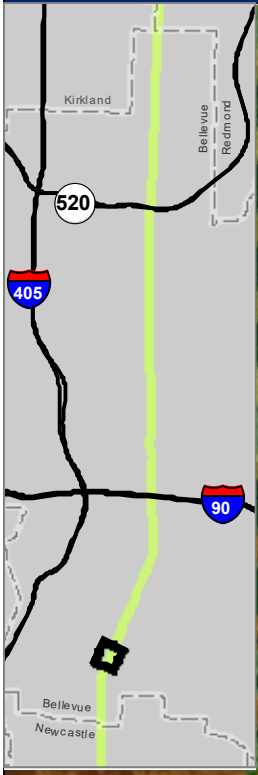
Pictometry, King County

<p><b>Significant Trees to be Removed<sup>TWC</sup></b></p> <ul style="list-style-type: none"> <li><span style="display: inline-block; width: 10px; height: 10px; background-color: #008000; border: 1px solid black; margin-right: 5px;"></span> City Owned</li> <li><span style="display: inline-block; width: 10px; height: 10px; background-color: #90EE90; border: 1px solid black; margin-right: 5px;"></span> Park</li> <li><span style="display: inline-block; width: 10px; height: 10px; border: 1px dashed black; margin-right: 5px;"></span> Public ROW</li> </ul>	<p><b>Parcel Ownership<sup>KC</sup></b></p> <ul style="list-style-type: none"> <li><span style="display: inline-block; width: 15px; height: 10px; background-color: #FFDAB9; margin-right: 5px;"></span> City Owned Parcel</li> <li><span style="display: inline-block; width: 15px; height: 10px; background-color: #90EE90; margin-right: 5px;"></span> Park</li> <li><span style="display: inline-block; width: 15px; height: 10px; border: 1px solid black; margin-right: 5px;"></span> Private/ Other Parcel</li> <li><span style="display: inline-block; width: 15px; height: 10px; border-bottom: 2px solid black; margin-right: 5px;"></span> Surveyed ROW</li> </ul>	<ul style="list-style-type: none"> <li><span style="display: inline-block; width: 15px; height: 10px; border: 2px solid blue; margin-right: 5px;"></span> Existing Easement Boundary<sup>PSE</sup></li> <li><span style="display: inline-block; width: 15px; height: 10px; border: 2px dashed yellow; margin-right: 5px;"></span> Wire Zone<sup>PSE</sup></li> <li><span style="display: inline-block; width: 15px; height: 10px; border-bottom: 1px dashed black; margin-right: 5px;"></span> Wires<sup>PSE</sup></li> <li><span style="display: inline-block; width: 10px; height: 10px; background-color: #FF4500; border-radius: 50%; margin-right: 5px;"></span> Proposed Pole Footprints<sup>PSE</sup></li> </ul>	<ul style="list-style-type: none"> <li><span style="display: inline-block; width: 10px; height: 10px; background-color: #000000; border-radius: 50%; margin-right: 5px;"></span> Existing Poles to Remain<sup>PSE</sup></li> <li><span style="display: inline-block; width: 10px; height: 10px; border: 1px dashed black; border-radius: 50%; margin-right: 5px;"></span> Existing Poles to be Removed<sup>PSE</sup></li> <li><span style="display: inline-block; width: 15px; height: 10px; border: 2px solid purple; margin-right: 5px;"></span> City Limit<sup>KC</sup></li> </ul>
---	---	---	---

**13**

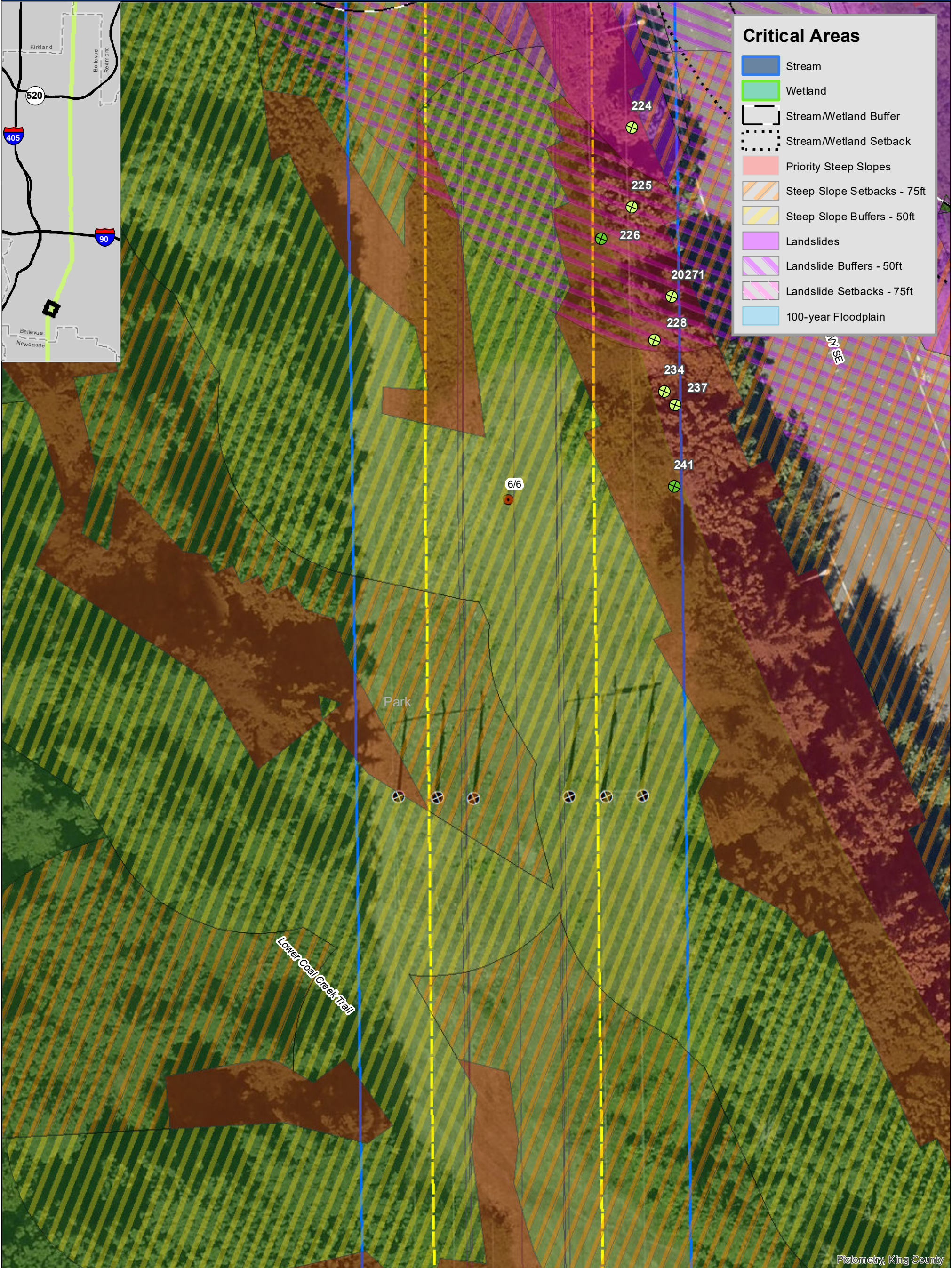
0 10 20  
Feet

PSE EE230 - COB: PUBLIC TREE REMOVAL MAPS



### Critical Areas

- Stream
- Wetland
- Stream/Wetland Buffer
- Stream/Wetland Setback
- Priority Steep Slopes
- Steep Slope Setbacks - 75ft
- Steep Slope Buffers - 50ft
- Landslides
- Landslide Buffers - 50ft
- Landslide Setbacks - 75ft
- 100-year Floodplain



Pictometry, King County

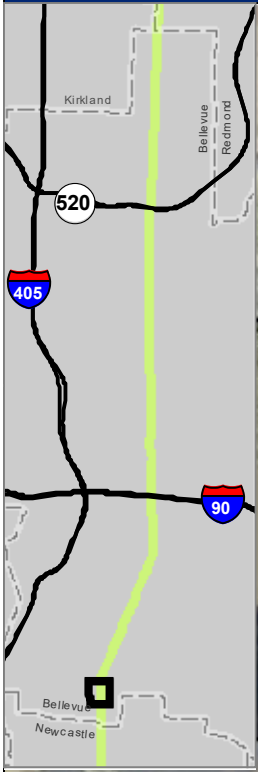
<p><b>Significant Trees to be Removed<sup>TWC</sup></b></p> <ul style="list-style-type: none"> <li>City Owned</li> <li>Park</li> <li>Public ROW</li> </ul>	<p><b>Parcel Ownership<sup>KC</sup></b></p> <ul style="list-style-type: none"> <li>City Owned Parcel</li> <li>Park</li> <li>Private/ Other Parcel</li> <li>Surveyed ROW</li> </ul>	<ul style="list-style-type: none"> <li>Existing Easement Boundary<sup>PSE</sup></li> <li>Wire Zone<sup>PSE</sup></li> <li>Wires<sup>PSE</sup></li> <li>Proposed Pole Footprints<sup>PSE</sup></li> </ul>	<ul style="list-style-type: none"> <li>Existing Poles to Remain<sup>PSE</sup></li> <li>Existing Poles to be Removed<sup>PSE</sup></li> <li>City Limit<sup>KC</sup></li> </ul>
--	--	--	---

**14**

0 10 20  
Feet

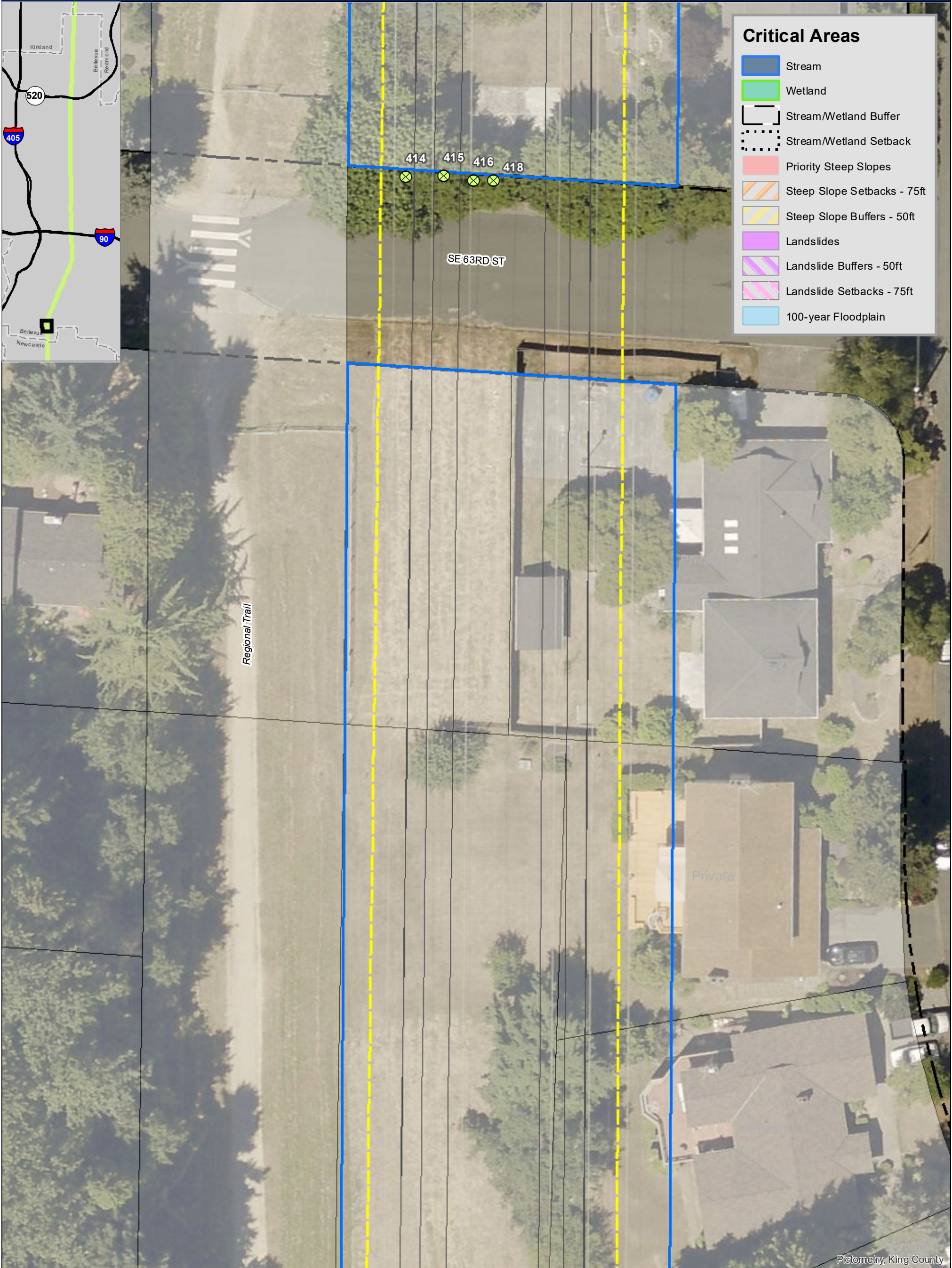
Data sources: Puget Sound Energy (PSE), The Watershed Company (TWC), City of Bellevue (COB), and King County (KC). Aerial imagery from PSE, 2011.

PSE EE230 - COB: PUBLIC TREE REMOVAL MAPS



### Critical Areas

- Stream
- Wetland
- Stream/Wetland Buffer
- Stream/Wetland Setback
- Priority Steep Slopes
- Steep Slope Setbacks - 75ft
- Steep Slope Buffers - 50ft
- Landslides
- Landslide Buffers - 50ft
- Landslide Setbacks - 75ft
- 100-year Floodplain



### Significant Trees to be Removed<sup>TWC</sup>

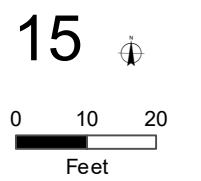
- City Owned
- Park
- Public ROW

### Parcel Ownership<sup>KC</sup>

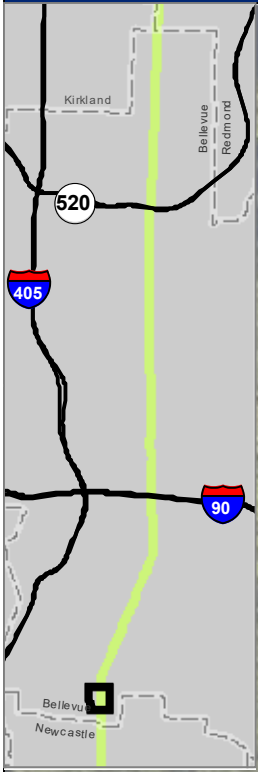
- City Owned Parcel
- Park
- Private/ Other Parcel
- Surveyed ROW

- Existing Easement Boundary<sup>PSE</sup>
- Wire Zone<sup>PSE</sup>
- Wires<sup>PSE</sup>
- Proposed Pole Footprints<sup>PSE</sup>

- Existing Poles to Remain<sup>PSE</sup>
- Existing Poles to be Removed<sup>PSE</sup>
- City Limit<sup>KC</sup>



PSE EE230 - COB: PUBLIC TREE REMOVAL MAPS



### Critical Areas

- Stream
- Wetland
- Stream/Wetland Buffer
- Stream/Wetland Setback
- Priority Steep Slopes
- Steep Slope Setbacks - 75ft
- Steep Slope Buffers - 50ft
- Landslides
- Landslide Buffers - 50ft
- Landslide Setbacks - 75ft
- 100-year Floodplain



Pictometry, King County

Significant Trees to be Removed<sup>TWC</sup>

- City Owned
- Park
- Public ROW

Parcel Ownership<sup>KC</sup>

- City Owned Parcel
- Park
- Private/ Other Parcel
- Surveyed ROW

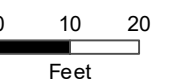
Existing Easement Boundary<sup>PSE</sup>

- Wire Zone<sup>PSE</sup>
- Wires<sup>PSE</sup>
- Proposed Pole Footprints<sup>PSE</sup>

Existing Poles to Remain<sup>PSE</sup>

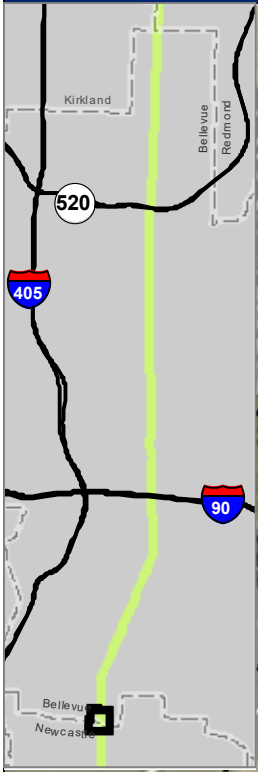
- Existing Poles to be Removed<sup>PSE</sup>
- City Limit<sup>KC</sup>

16



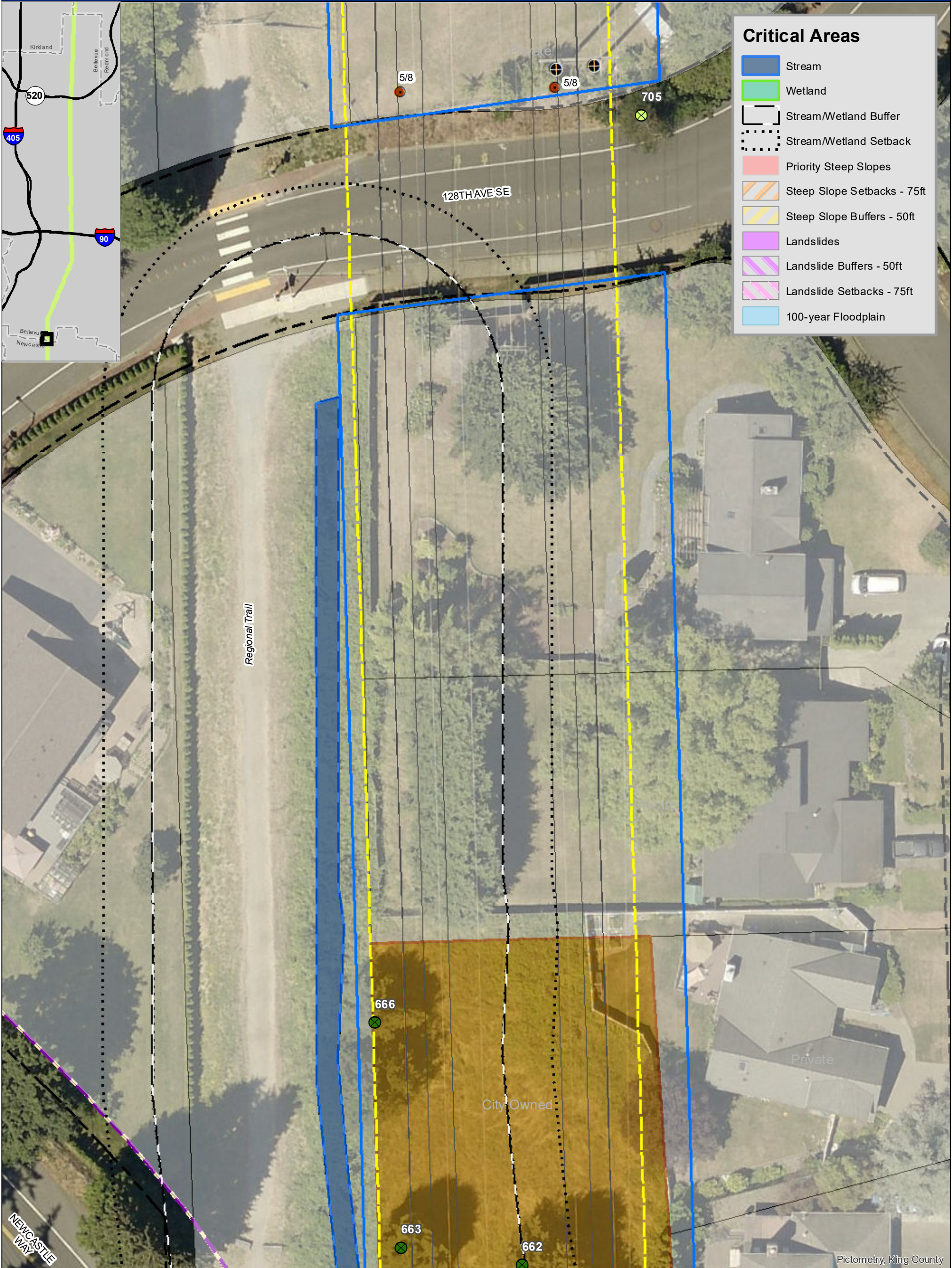


PSE EE230 - COB: PUBLIC TREE REMOVAL MAPS



### Critical Areas

- Stream
- Wetland
- Stream/Wetland Buffer
- Stream/Wetland Setback
- Priority Steep Slopes
- Steep Slope Setbacks - 75ft
- Steep Slope Buffers - 50ft
- Landslides
- Landslide Buffers - 50ft
- Landslide Setbacks - 75ft
- 100-year Floodplain



Pictometry, King County

**Significant Trees to be Removed<sup>TWC</sup>**

- City Owned
- Park
- Public ROW

**Parcel Ownership<sup>KC</sup>**

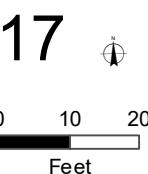
- City Owned Parcel
- Park
- Private/ Other Parcel
- Surveyed ROW

**Existing Easement Boundary<sup>PSE</sup>**

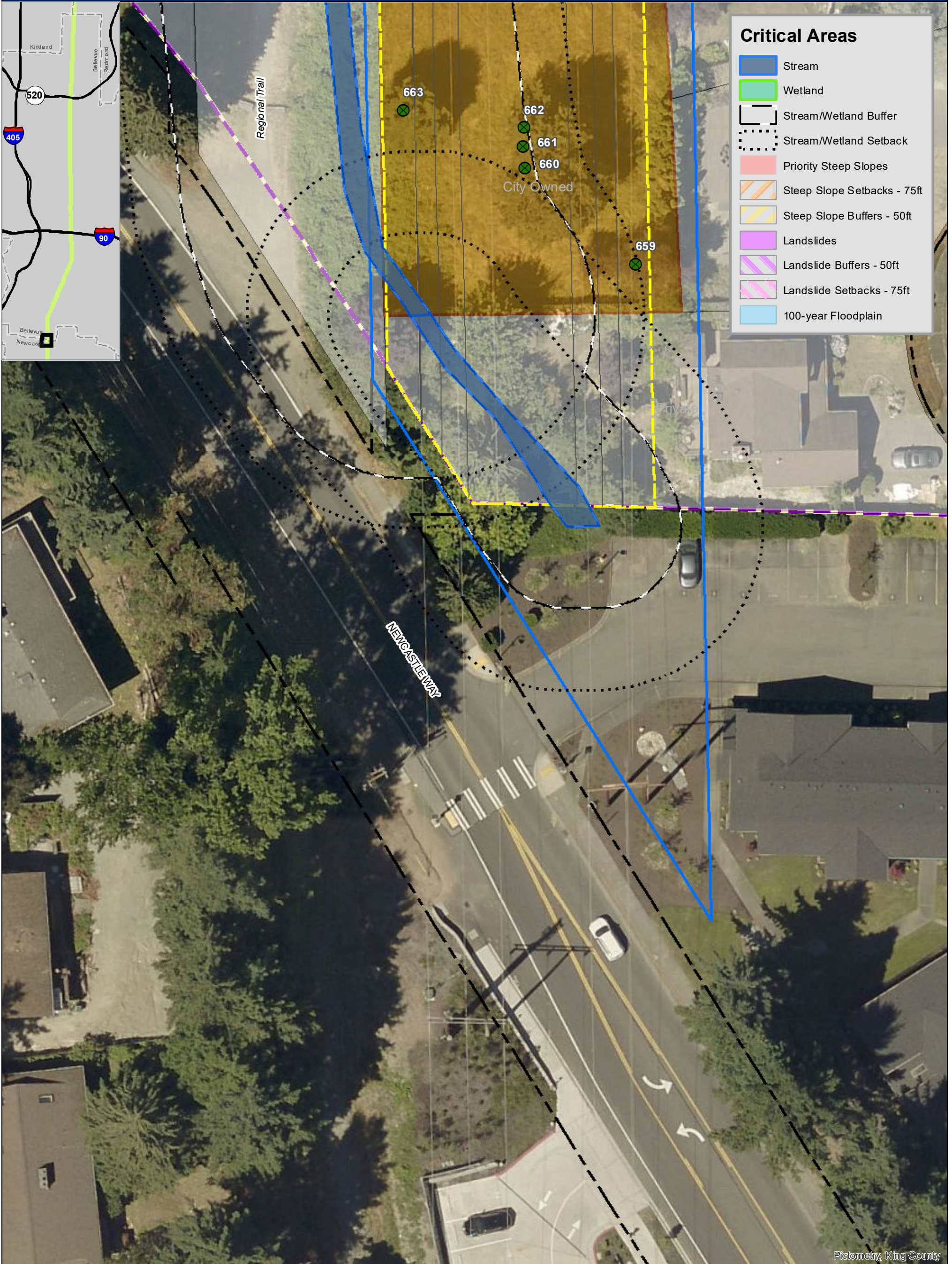
- Existing Easement Boundary<sup>PSE</sup>
- Wire Zone<sup>PSE</sup>
- Wires<sup>PSE</sup>
- Proposed Pole Footprints<sup>PSE</sup>

**Existing Poles to Remain<sup>PSE</sup>**

- Existing Poles to Remain<sup>PSE</sup>
- Existing Poles to be Removed<sup>PSE</sup>
- City Limit<sup>KC</sup>



PSE EE230 - COB: PUBLIC TREE REMOVAL MAPS



### Critical Areas

- Stream
- Wetland
- Stream/Wetland Buffer
- Stream/Wetland Setback
- Priority Steep Slopes
- Steep Slope Setbacks - 75ft
- Steep Slope Buffers - 50ft
- Landslides
- Landslide Buffers - 50ft
- Landslide Setbacks - 75ft
- 100-year Floodplain

### Significant Trees to be Removed<sup>TWC</sup>

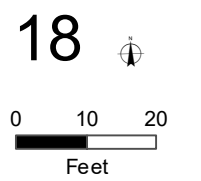
- City Owned
- Park
- Public ROW

### Parcel Ownership<sup>KC</sup>

- City Owned Parcel
- Park
- Private/ Other Parcel
- Surveyed ROW

- Existing Easement Boundary<sup>PSE</sup>
- Wire Zone<sup>PSE</sup>
- Wires<sup>PSE</sup>
- Proposed Pole Footprints<sup>PSE</sup>

- Existing Poles to Remain<sup>PSE</sup>
- Existing Poles to be Removed<sup>PSE</sup>
- City Limit<sup>KC</sup>



Data sources: Puget Sound Energy (PSE), The Watershed Company (TWC), City of Bellevue (COB), and King County (KC). Aerial imagery from PSE, 2011.