



NEP NEWSLETTER

Somerset

Thank you for participating in the Somerset Neighborhood Enhancement Program!

In September and October 2022, 463 ballots (16% of Somerset households) were returned on the 11 proposed enhancement projects to receive Neighborhood Enhancement Program (NEP) funds. One project will be funded out of the \$217,000 Somerset NEP allocation, which will also encompass associated planning, design, labor, and materials fees.

Please also take a moment to complete the enclosed, prepaid NEP evaluation form, and mail it back to us. Your feedback is critical to ensuring that the Neighborhood Enhancement Program is meeting your needs, as well as informing planning decisions, program improvement, and policy development. You can also complete the evaluation form online via the NEP website (BellevueWA.gov/nep). Kindly return your completed form or submit your comments online by **December 30, 2022**.

As we begin the implementation phase, we encourage you to remain engaged in the process by contacting project managers to provide input, tracking the status of the projects on the NEP website, and enjoying the built work!

Please Return Enclosed Evaluation Form or submit comments online at BellevueWA.gov/nep by Dec. 30!
Funded Project List and Final Results Inside

The City of Bellevue
Neighborhood Enhancement Program
Somerset Newsletter

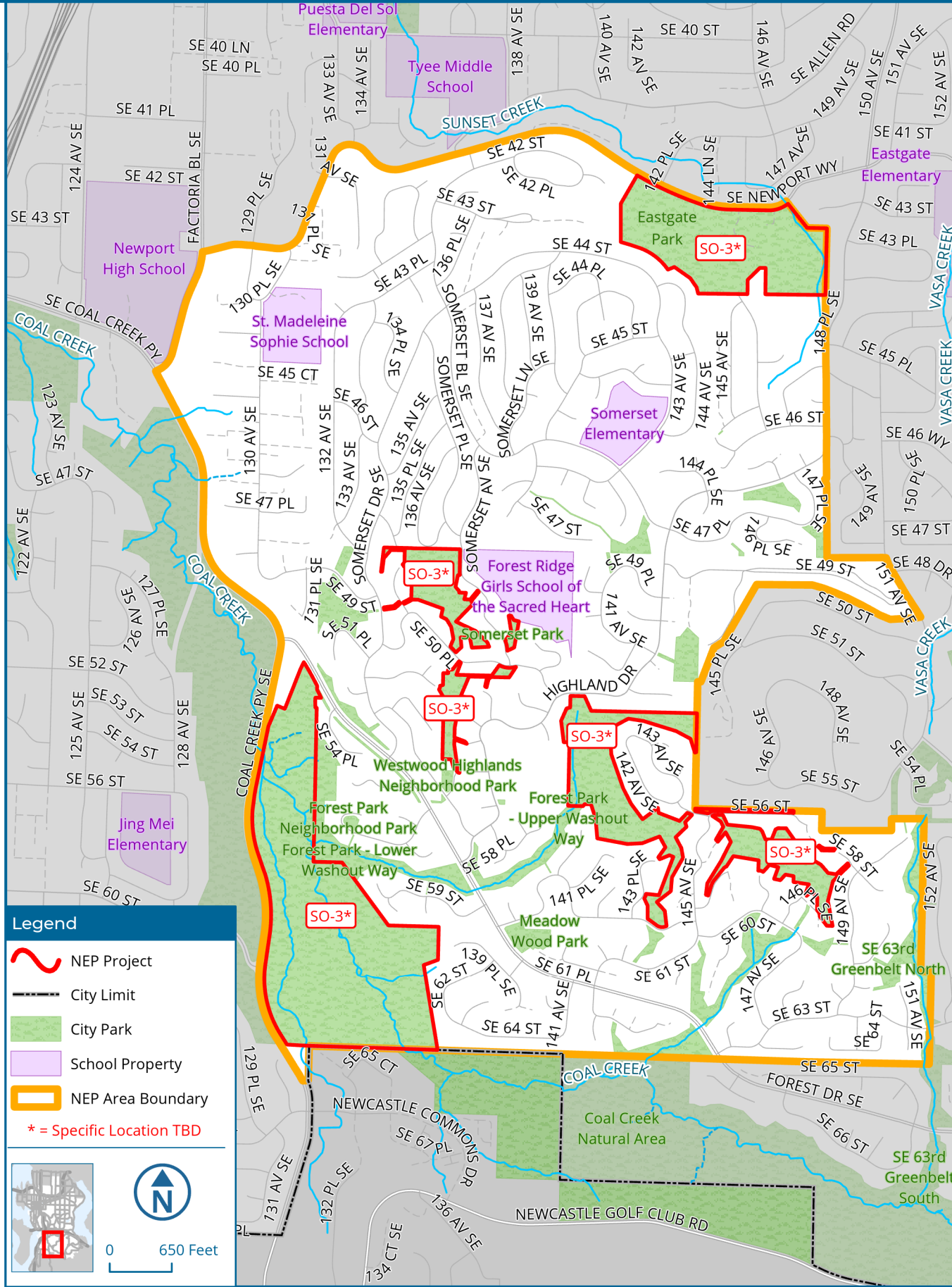


Community Development Department
PO Box 90012
Bellevue, WA 98009-9012



PRSR STD
U.S. POSTAGE
PAID
PERMIT #61
BELLEVUE, WA

Neighborhood Enhancement Program Somerset NEP Funded Project Locations



Funded projects to be implemented by Neighborhood Enhancement Program over the next three to five years.

SO-3: Somerset Area Greenbelts Invasive Vegetation Removal

\$205,000 626 points

Locations: Various city managed greenbelts within the Somerset neighborhood including Somerset Park, Forest Park Open Space, Forest Park Meadows Open Space, Eastgate Park, Westwood Highlands Open Space and areas within the Coal Creek Natural Area

This project will involve the removal of non-native vegetation, with a focus on blackberry and ivy from city managed greenbelts within the Somerset neighborhood. The scope of work will include grubbing of blackberry and ivy from the forest floor, removal of ivy growing up existing native trees, removal of other non-native invasive weeds as they are encountered and will include the planting of native trees and shrubs. The new plantings will be watered and maintained by city staff until they are established and self-sustainable.

Project Manager: Rick Bailey (425-452-6031); ribailey@bellevuewa.gov



Overall Somerset Project List and Final Vote Results:

Ballot #	Project	Cost	Points
SO-3	Somerset Area Greenbelts Invasive Vegetation Removal	\$205,000	626
SO-2	SO-2: Street Lights at Highland Drive and Somerset Blvd SE Intersection	\$86,000	330
SO-1	2-5 yr. Old Play Equipment & Adult Exercise Equipment – Workout bars @ Forest Hill Park	\$200,000	279
SO-4	Somerset Blvd SE and 139th Ave SE Streetlights	\$86,450	262
SO-7	Pickleball Striping @ Forest Glen Neighborhood Park	\$50,000	239
SO-6	Somerset Highlands Streetlight Enhancement - Somerset Highlands near Somerset Elementary	\$15,500	204
SO-5	Highland Drive median landscaping Renovation	\$175,000	180
SO-8	Newport Way Streetscape Renovation	\$100,000	173
SO-11	Westwood Highlands South Gateway Landscaping	\$140,000	167
SO-9	Play Equipment Replacement at Meadow Wood Park/upper park area	\$135,000	159
SO-10	New Picnic Table at Westwood Highlands Park	\$2,000	44

**Printing, mailing, and administrative costs included in the \$217,000 funding allocation*

Questions/Concerns?

Contact the following individuals regarding the following topics:

Neighborhood Enhancement Program

Theresa Cuthill | 425-452-4186 | tcuthill@bellevuewa.gov

Somerset Neighborhood Liaison

Mark Heilman | 425-452-2735 | mheilman@bellevuewa.gov



For alternate formats, interpreters, or reasonable accommodation requests please phone at least 48 hours in advance 425-452-4186 (voice) or email tcuthill@bellevuewa.gov. For complaints regarding accommodations, contact City of Bellevue ADA/Title VI Administrator at 425-452-6168 (voice) or email ADATitleVI@bellevuewa.gov. If you are deaf or hard of hearing dial 711. All meetings are wheelchair accessible.