



City of Bellevue

Ashwood Park Master Plan Update

bellevuewa.gov/ashwood-master-plan

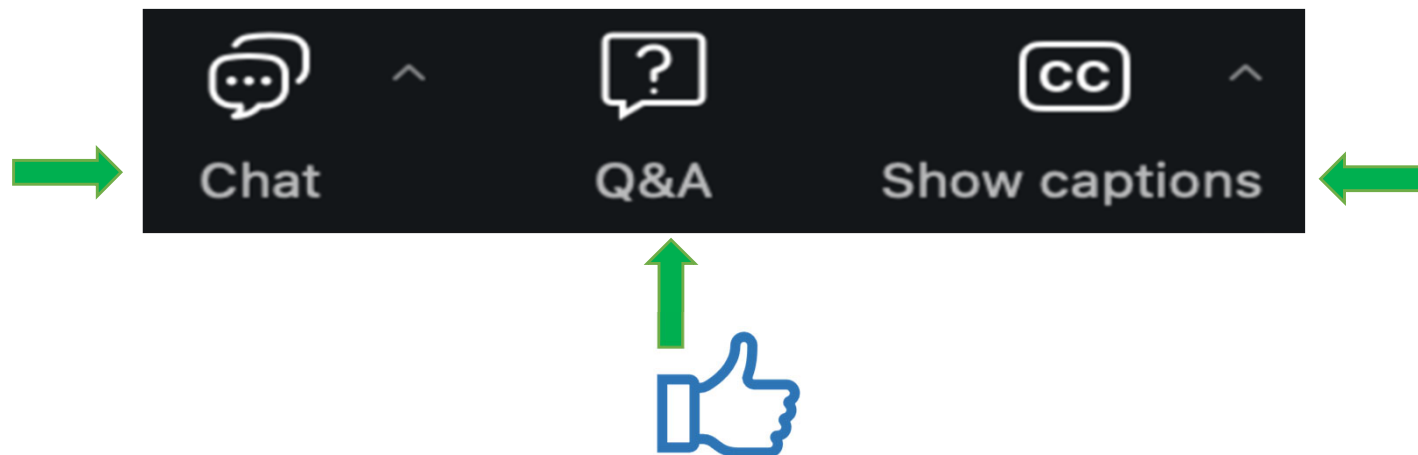
Community Meeting #2 | September 4, 2024

Welcome

- This meeting is being recorded
 - Closed Caption is turned on for all who would like to use that feature
 - All attendees are on mute
- If you need assistance with audio or video, please put a message in the **Q&A**
- If you are dialing in by phone, you can participate during **Q&A** by pressing ***9** to raise your hand
When called on, press ***6** to unmute

Welcome Cont.

- Find the **Question & Answer (Q&A)** feature!
That's the way to comment and ask questions
 - See a question you wanted to ask? Click the **thumbs-up** icon to “upvote” the question
- To keep us on time, we have consolidated similar questions



Welcome Cont.

- We are expecting a large number of attendees, to avoid confusion, all are on mute.
- We will gather questions throughout the webinar using the **Q&A** feature and will answer them together after the presentation.
- To keep us on time, we will consolidate similar questions
- The **Chat** feature is read only, look there for additional notes from the park team!

Introductions

- City of Bellevue Staff
- MacLeod Reckord Staff
- PRR staff

AGENDA



Project Review



Ashwood Survey #1 Results



Conceptual Plans



Next Steps



Question and Answers



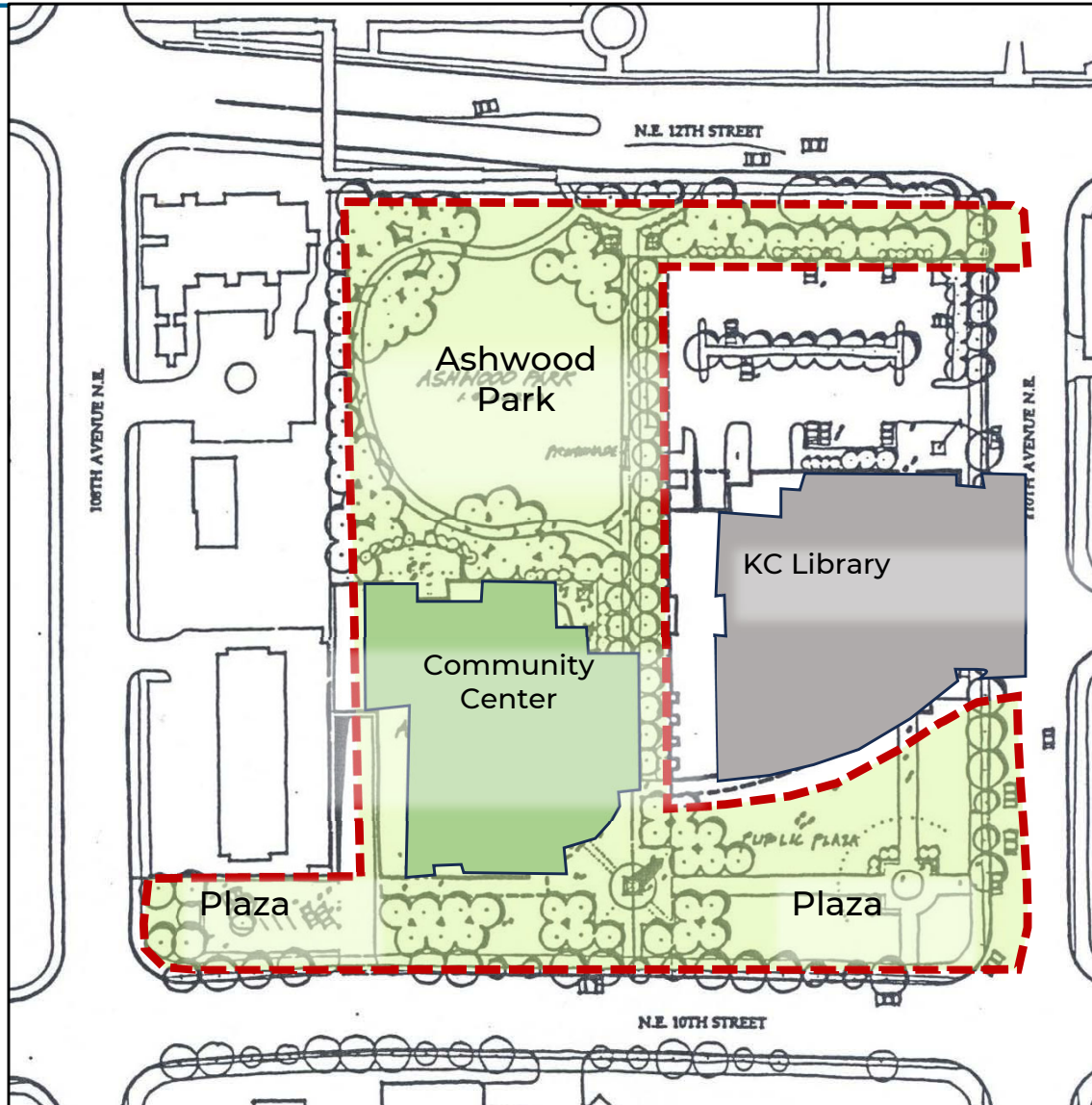
Project Review

Ashwood Park



2023 Aerial

1990 Conceptual Site Plan



1990 Adopted Site Plan

Public Outreach Plan

Goal and objectives

- Provide a range of opportunities for community input
- Generate broad reaching, cross cultural input
- Engage community stakeholders
- Keep public, Parks Board, and City Council informed
- Website: Bellevuewa.gov/ashwood-master-plan

Community Meeting #1

- Meeting was held April 3, 2024 at the Bellevue Library
- There were approximately 90 people that participated in that meeting.
- We had a short Q&A session and;
- Participants were able to ask further questions at staffed stations around the room and;
- place dots on a preference chart
- The Survey was also available to complete



Ashwood Survey Results

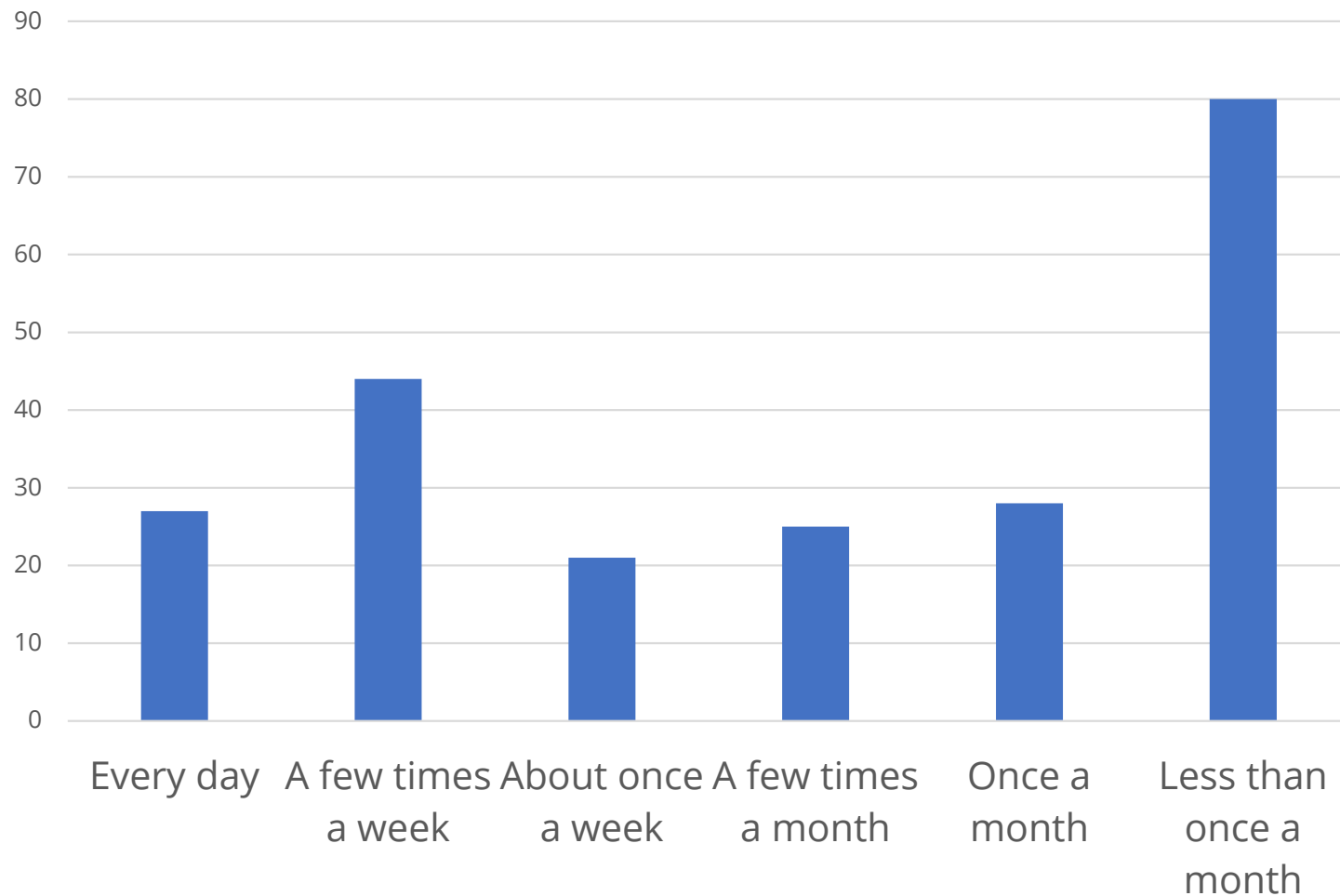
Survey Results

- Demographics of respondents:
 - 191 live in Bellevue
 - 31 work but do not live in Bellevue
 - 3 do not live or work in Bellevue

 - 40% from 18-44 years old
 - 34% from 45-64 years old
 - 21% 65 or older
 - 5% prefer not to answer

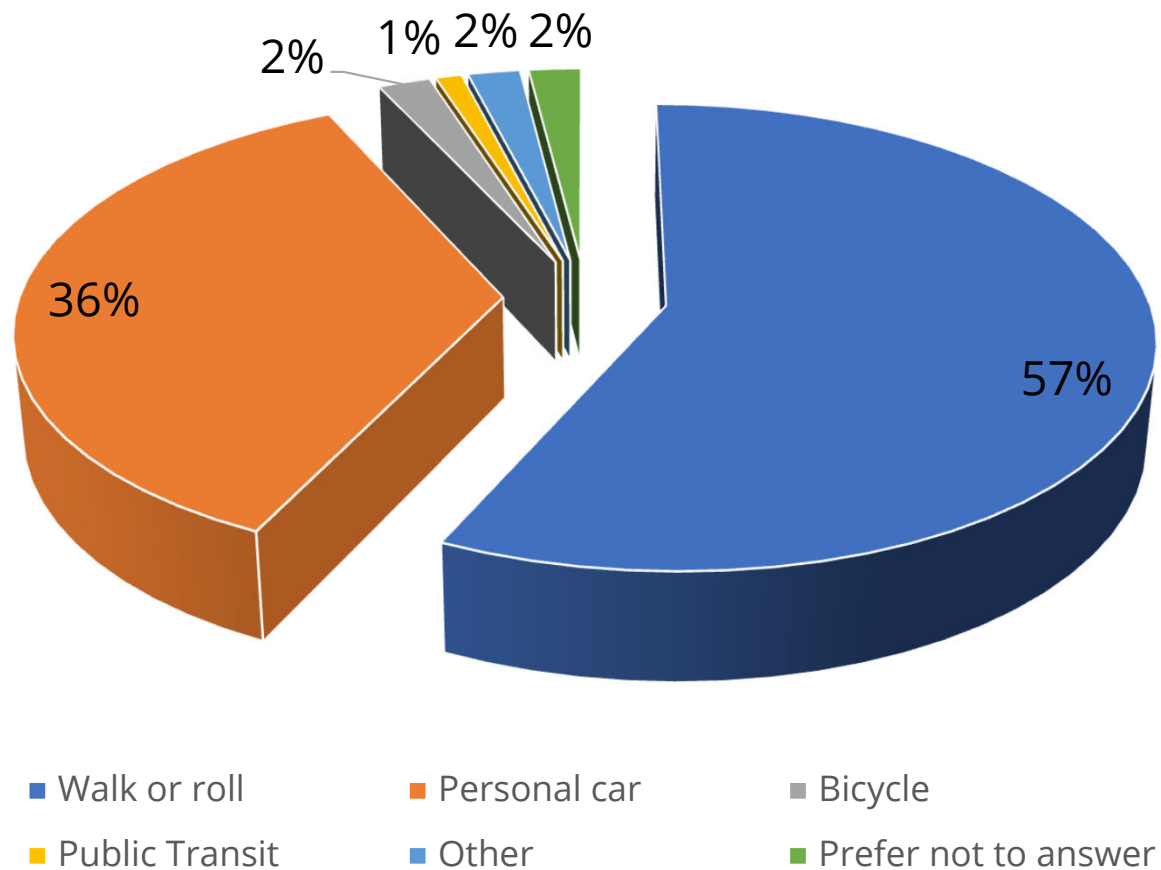
Survey Results cont.

How often do you visit Ashwood Park?



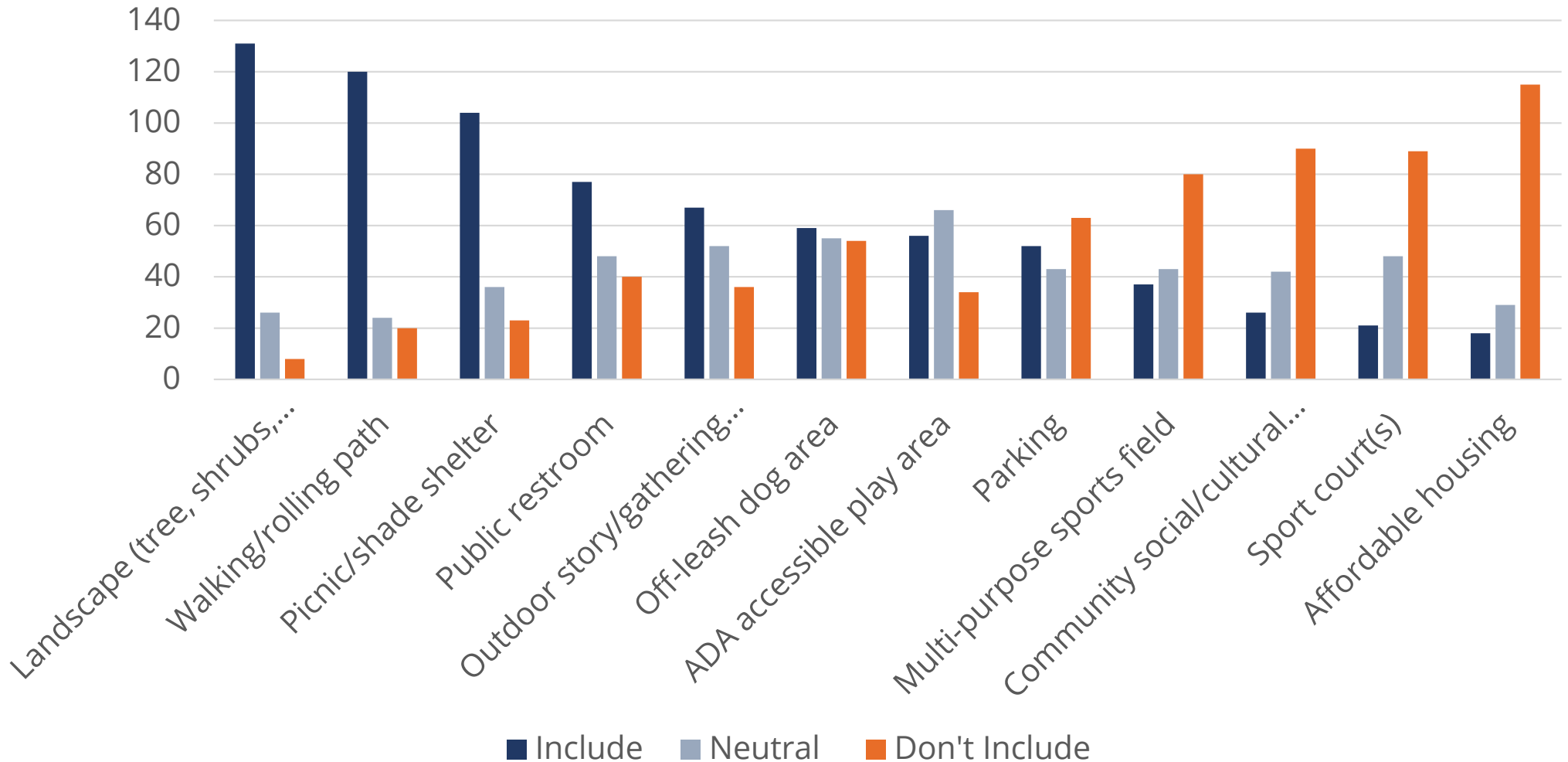
Survey Results cont.

Q4 How do you most often access Ashwood Park?



Preliminary Survey Results

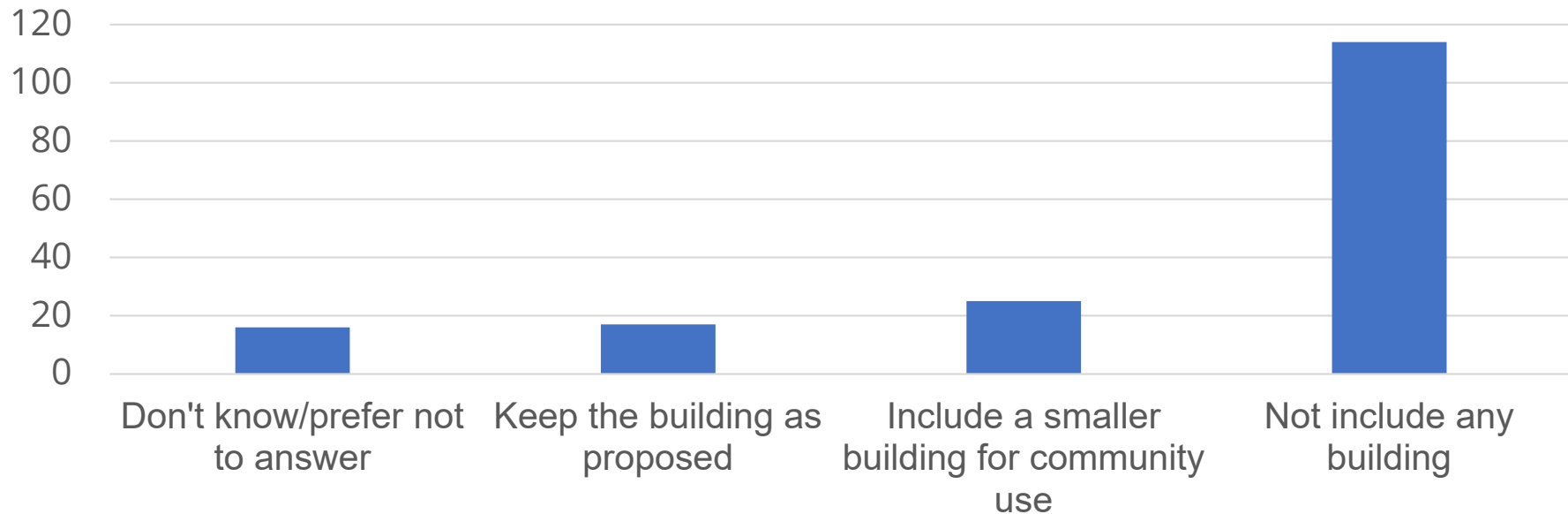
Park Elements



Preliminary Survey Results

(cont.)

Q6 The 1990 master plan includes one acre of open green park and a large building that includes structured parking, a community center, and affordable housing. In your opinion, should the updated master plan:



Preliminary Survey Summary

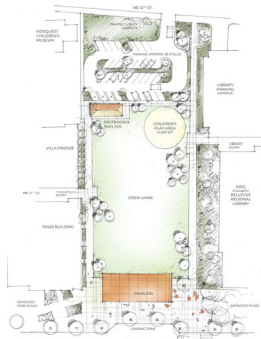
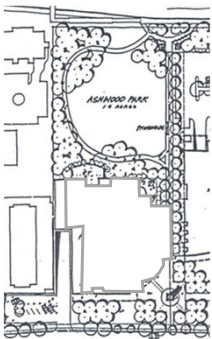
- Most respondents would prefer an open park with walking routes, increased landscaping, picnic/shade shelters, public restroom, gathering space and an off-leash dog area.
- Many in the community prefer there not to be a community/cultural center, affordable housing, sports courts or sports fields.
- The majority of users walk or roll to Ashwood.



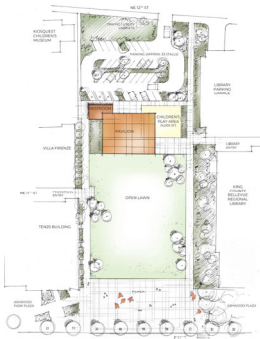
Conceptual Plans

Concept Alternatives

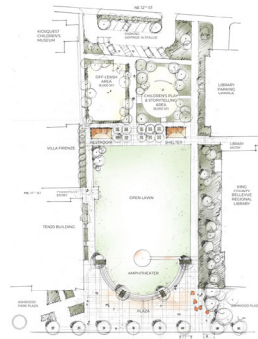
- Previous 1990 Master Plan
- 5 Additional Concept Alternatives
 - Variability in balancing similar program elements
- Themes / Character
 - Evokes aesthetic and functional differences
- Comparison Matrix
 - Quantitative comparisons



Grand Pavilion South - Concept A
Advanced Park Master Plan Update



Grand Pavilion North - Concept B
Advanced Park Master Plan Update



Active Theater - Concept C
Advanced Park Master Plan Update

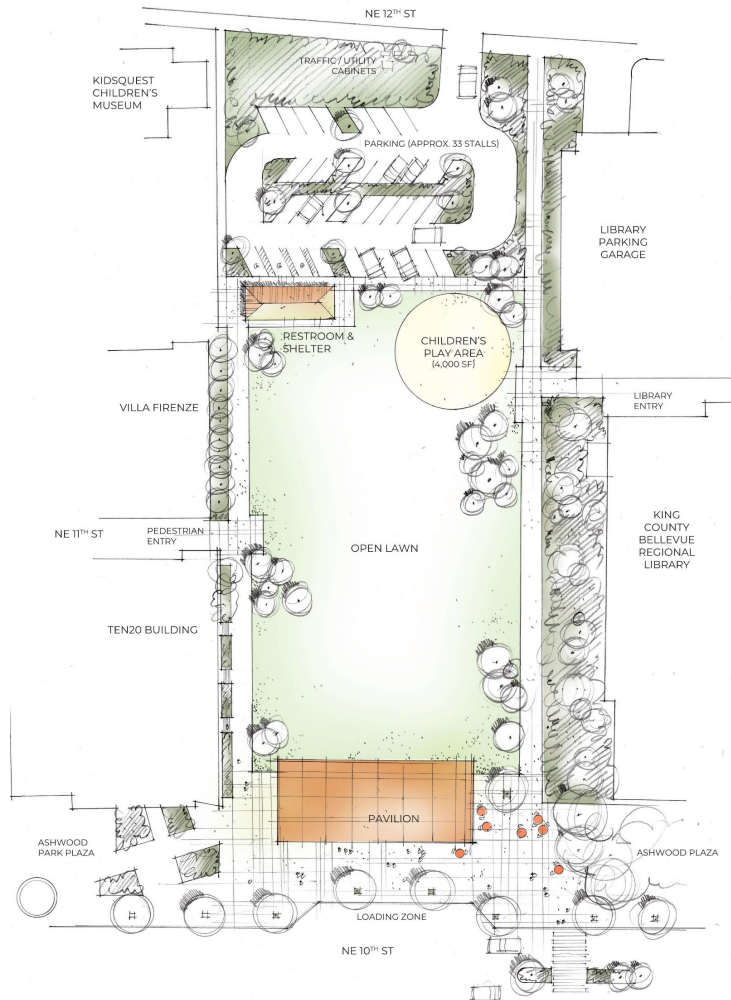


Playful Promenade - Concept D
Advanced Park Master Plan Update



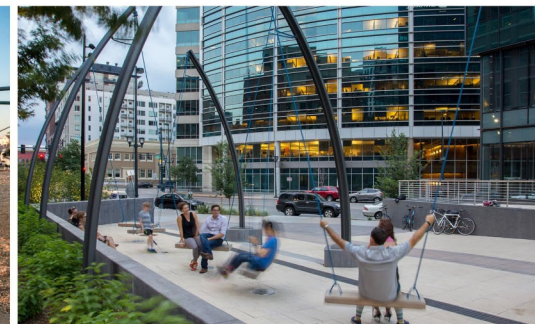
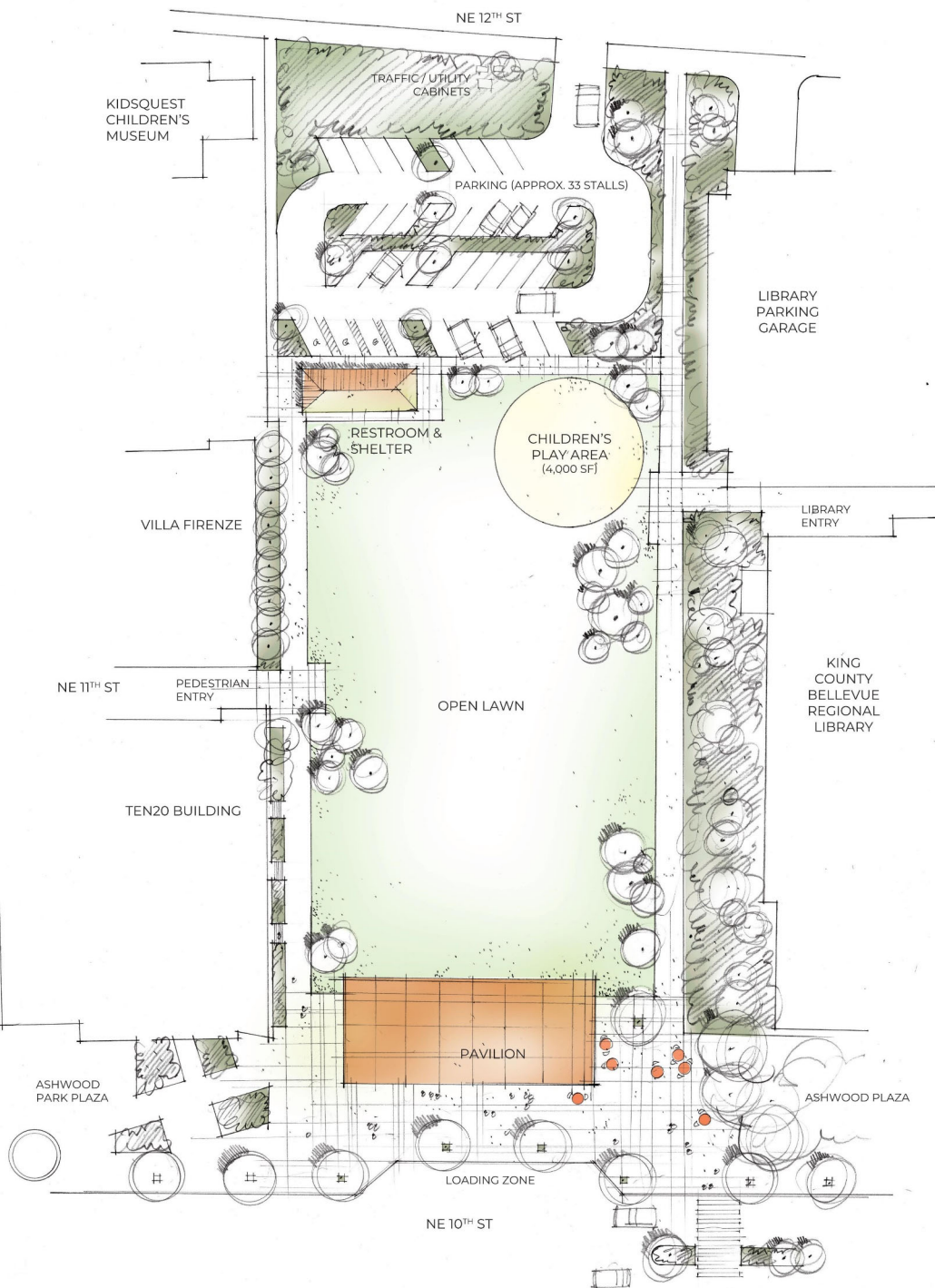
Art In The Park - Concept E
Advanced Park Master Plan Update

Grand Pavilion South - Concept A

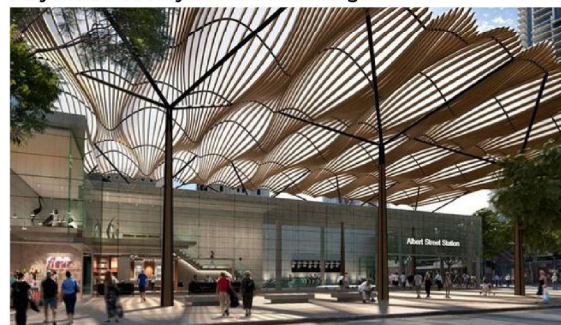


Key attributes

- Structured venue for markets, events
- Large plaza space
- Open, unscheduled lawn
- Existing parking improved
- Restroom/shelter combined
- Children's play area

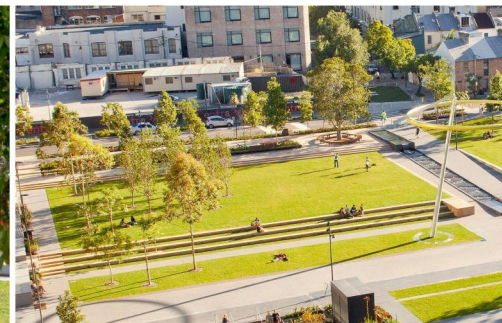
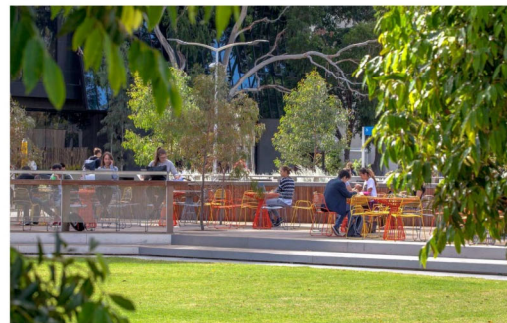


Play Area and Playful Site Furnishings

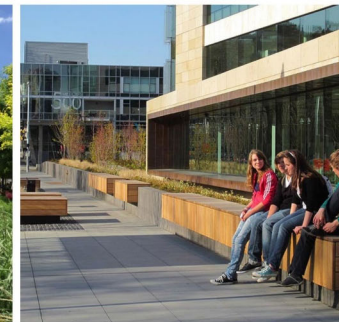


Pavilion

Restroom / Shelter



Open Lawn with Wide Perimeter Promenade and Plazas



Street Front Plaza

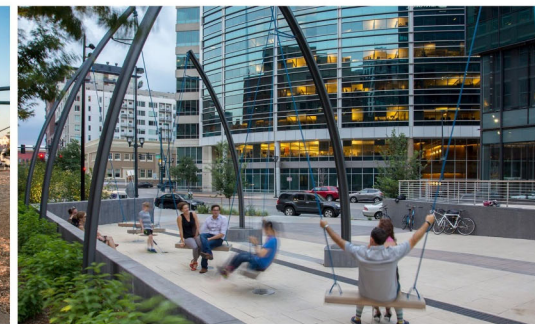
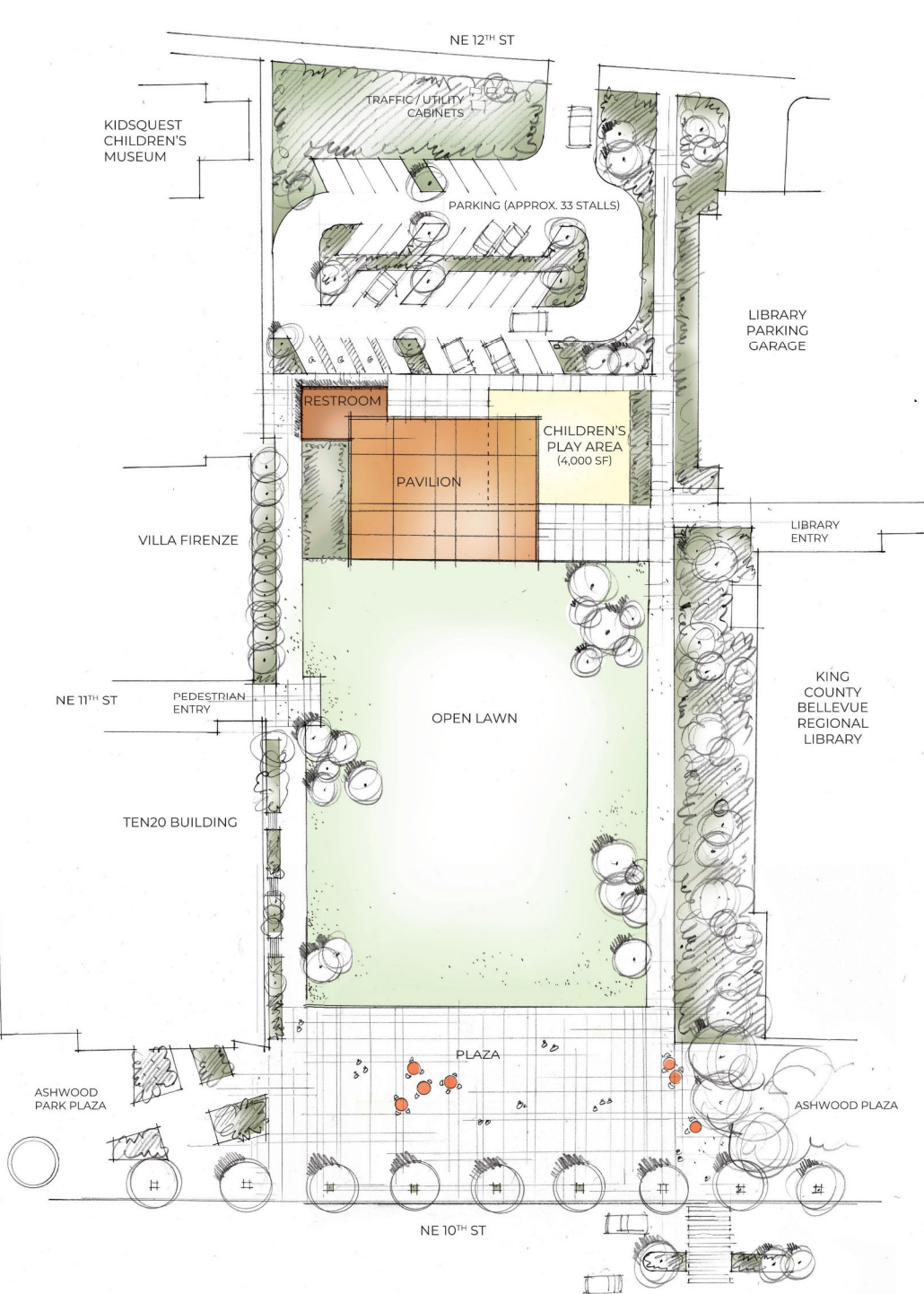
Precedent Images

Grand Pavilion North – Concept B

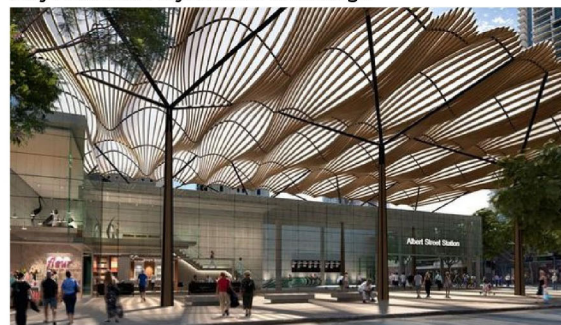


Key attributes

- Structured venue integrated with restroom and play area
- Large plaza space
- Open, unscheduled lawn
- Existing parking improved

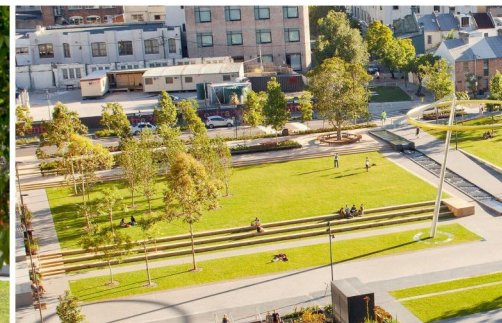
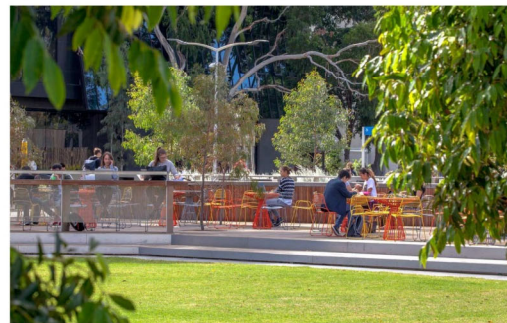


Play Area and Playful Site Furnishings

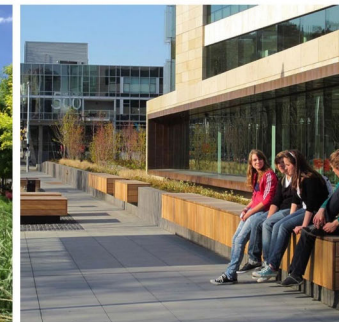


Pavilion

Restroom / Shelter



Open Lawn with Wide Perimeter Promenade and Plazas



Street Front Plaza

Precedent Images

Grand Pavilion - Concepts A & B

Ashwood Park Master Plan Update

Grand Pavilion North - Concept B

Ashwood Park Master Plan Update



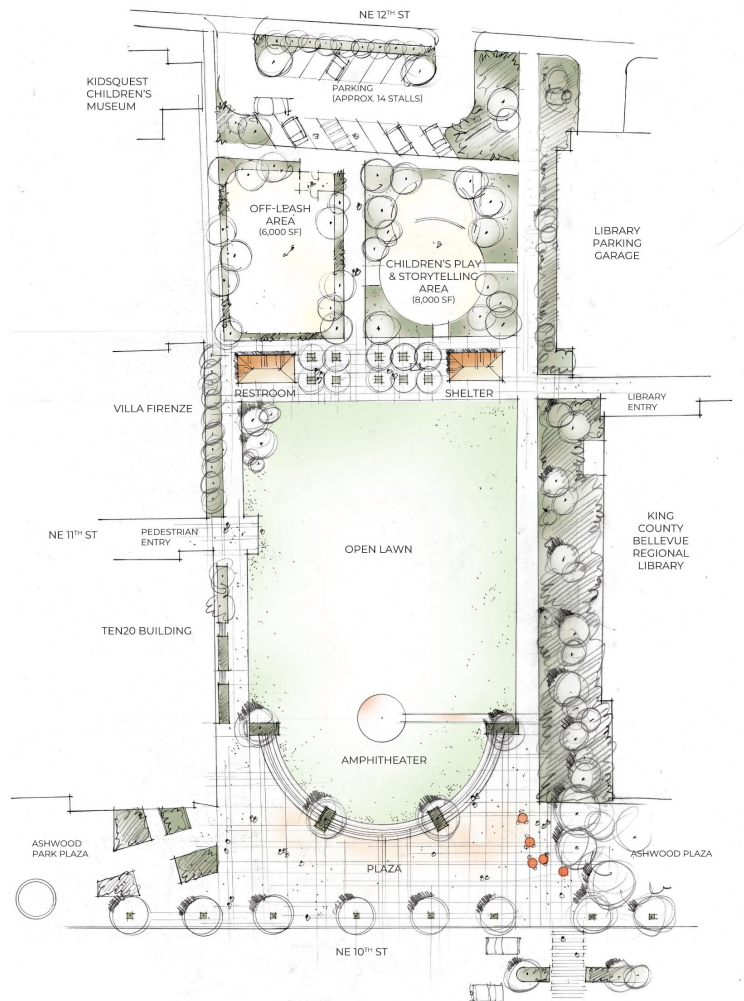
Community Meeting #2



September 04 2024
Community Meeting #2

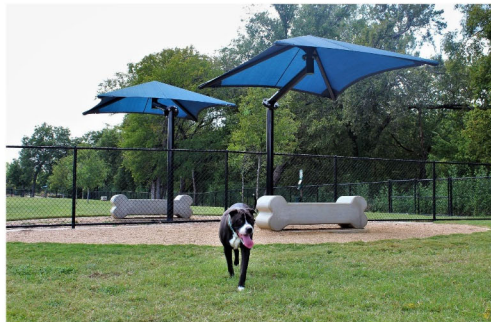


Active Theater - Concept C

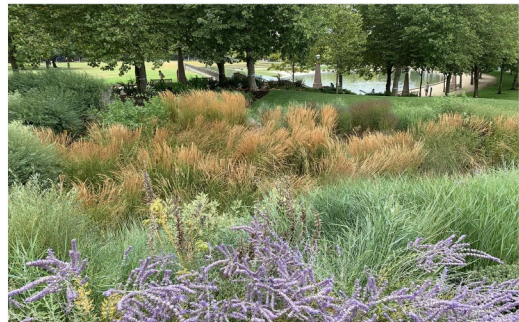


Key attributes

- Plaza with formalized amphitheater bowl and open, unscheduled lawn
- Large and medium plaza spaces
- Existing parking reduced
- Restroom/shelter separate structures
- Children's play area
- Off-leash area



Off-Leash Area



Raingarden Planting



Restroom and Shelter



Play Area



Bocce Courts



Open Lawn and Amphitheater



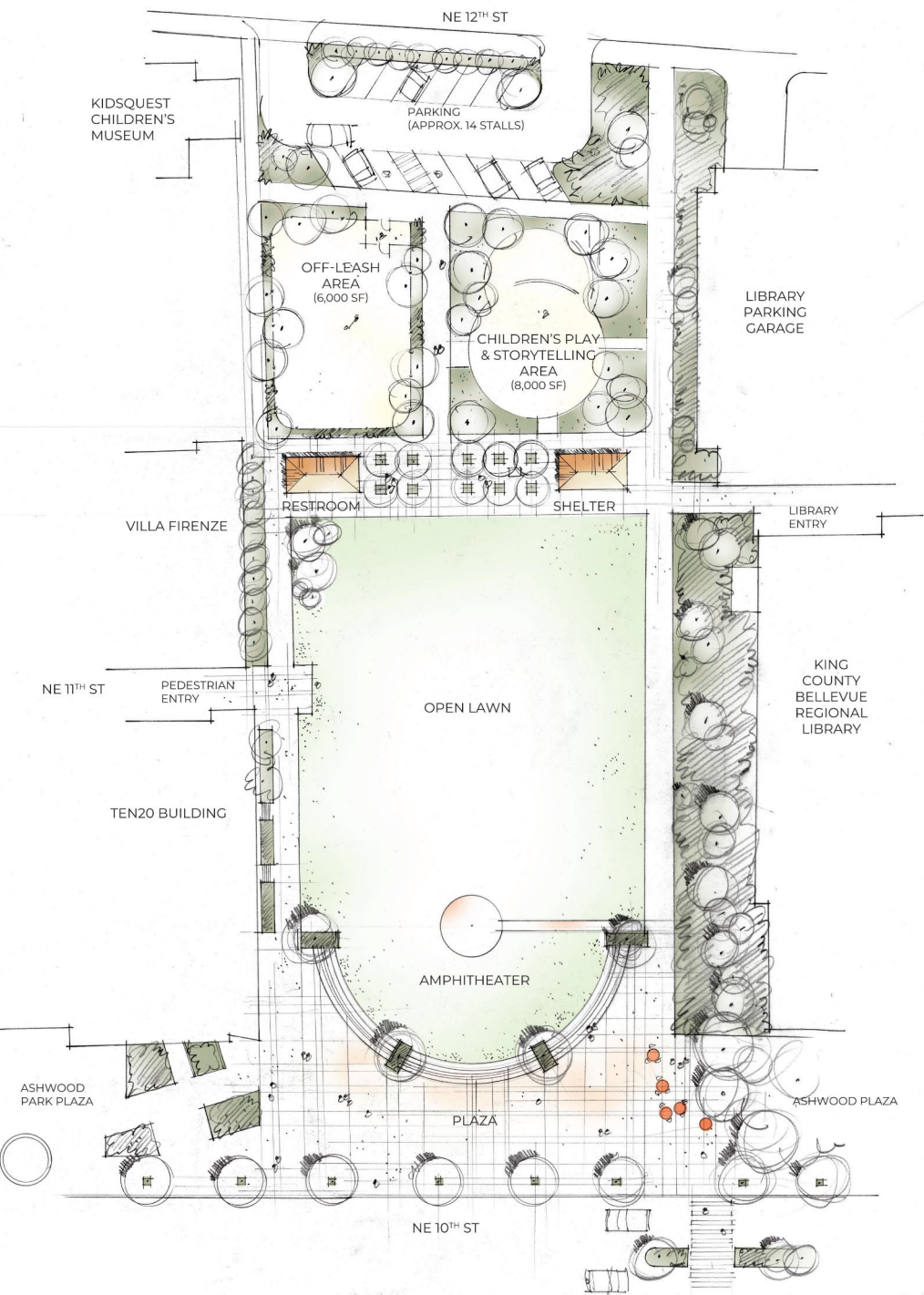
Street Front Plaza



Precedent Images

Active Theatre - Concept C
Ashwood Park Master Plan Update

September 04 2024
Community Meeting #2



Active Theater - Concept C
Ashwood Park Master Plan Update

Community Meeting #2



Playful Promenade - Concept D



Key attributes

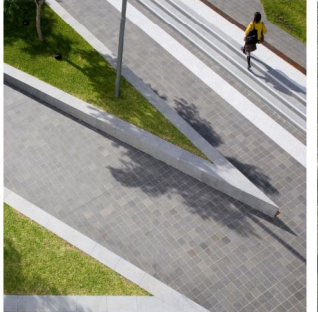
- Large plaza space
- Open, unscheduled lawn
- ADA parking only
- Restroom/shelter separate structures all at south end
- Children's play area integrated with artwork/earthwork
- Off-leash area
- Angular geometry



Art / Play



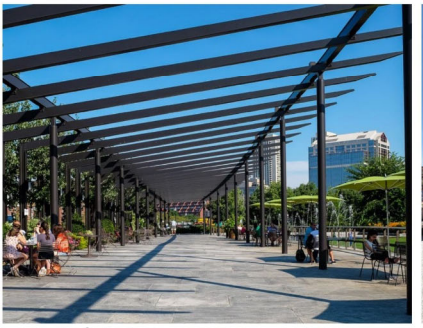
Perimeter Promenade and Plazas



Off-Leash Area



Restroom



Pergola / Shelter



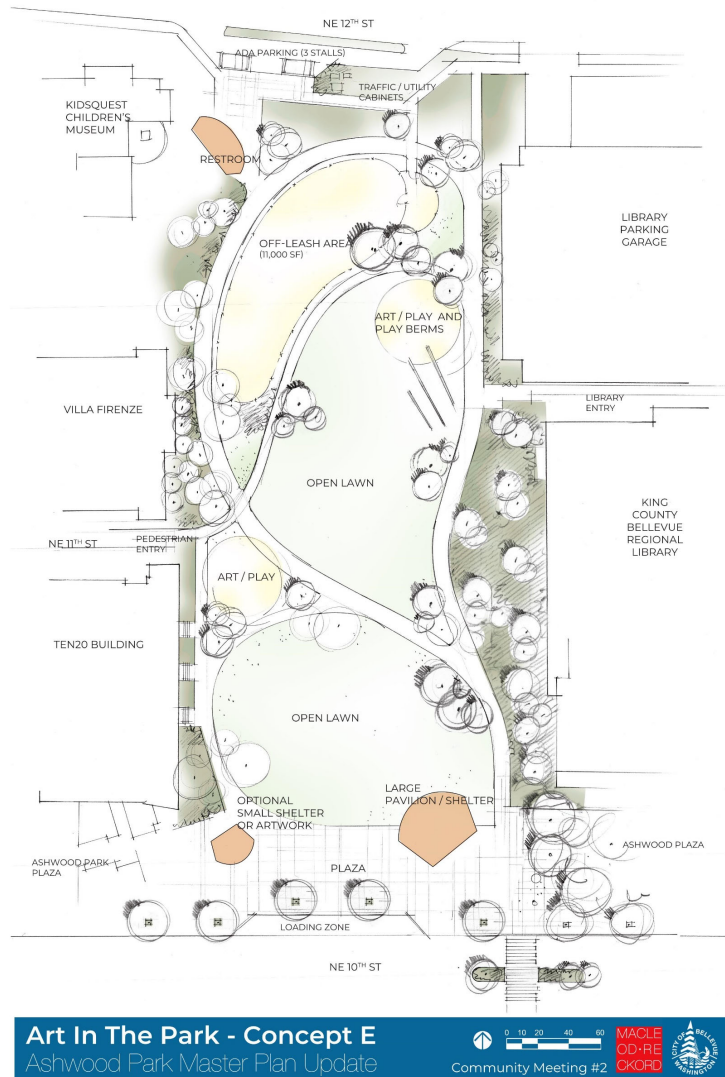
Seat / Swings



Plaza and Seating



Art in the Park - Concept E



Key attributes

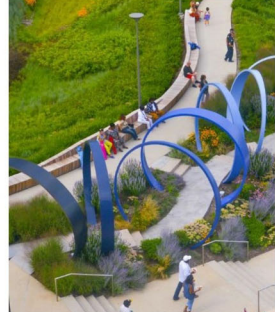
- Medium and small plazas
- Open, unscheduled lawn interrupted by pathways
- ADA parking only
- Restroom/shelter separate structures at both ends of the site
- Children's play area integrated with artwork/earthwork in 2 locations
- Largest off-leash area
- Curvilinear geometry



Art / Play



Off-Leash Area



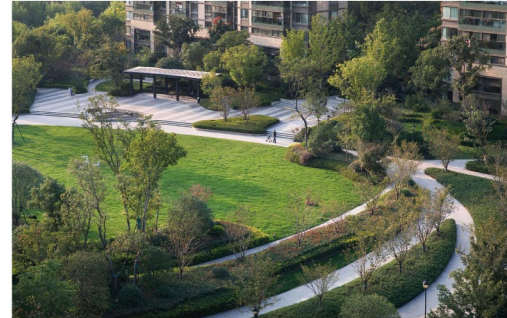
Gateway



Restroom



Pavilion / Shelter



Street Front Plaza and Open Lawn



Summary

- Comparison Matrix

Program Element	Grand Pavilion South Concept A	Grand Pavilion North Concept B	Active Theater Concept C	Playful Promenade Concept D	Art in the Park Concept E
Park Structures	Mixed event large covered pavilion	Mixed event large covered pavilion with integrated restroom	Separate restroom and covered shelter	Separate restroom and open air pergola	Separate restroom, one pavilion/shelter, one small shelter
Performance Venues	Covered pavilion and open lawn	Covered pavilion and open lawn	Open air stage platform and open lawn	Open air pergola/shelter and open lawn	Covered pavilion and open lawn
Parking and Access	Two-way ingress/egress from relocated driveway and two bays of parking	Two-way ingress/egress from relocated driveway and two bays of parking	One-way ingress/egress with two new driveways and one bay of parking	ADA only stalls in single lane drive through	ADA only stalls in single lane drive through
Parking Stall Count	approx 33	approx 33	approx 14	approx 6 ADA stalls	approx 3 ADA stalls
Plaza Development	South end and includes loading zone	South end and integrated with pavilion at north end	South end and integrated with restroom/shelter	South end	South end
Children's Play Area	Yes, 4000 SF	Yes, 4,000 SF	Yes, 8,000 SF	Yes, integrated with art	Yes, integrated with art
Off-Leash Area	Not provided	Not provided	Yes, 6,000 SF	Yes, 10,000 SF	Yes, 11,000 SF
Program Elements Common to All Alternative Concepts					
Open unscheduled lawn					
Perimeter path, seating					
Restroom and shelter					
Access to NE 11th and Library					
Connections to existing plazas along south frontage					
Remove vehicular access through library					

Summary

- All 5 Concepts can accommodate variable program elements
- Preferences
 - Concept
 - Program elements
 - Aesthetic quality



Next Steps

Timeline



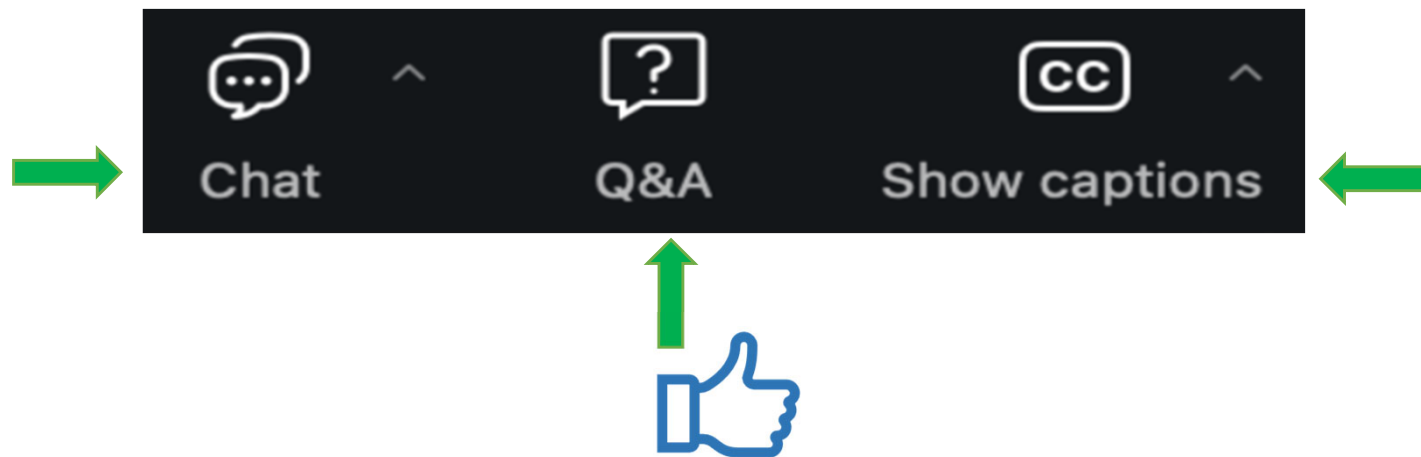
Survey #2

- Survey will be available on the project website September 5, 2024

<https://bellevuewa.gov/ashwood-master-plan>

Questions and Answers

- Find the **Question & Answer (Q&A)** feature!
That's the way to comment and ask questions
 - See a question you wanted to ask? Click the **thumbs-up** icon to “upvote” the question
- To keep us on time, we have consolidated similar questions



Questions and Answers

- If you are dialing in by phone, you can participate by pressing *9 to raise your hand
 - When called on, press *6 to unmute

