



# Bellevue Airfield Park - Master Plan Update

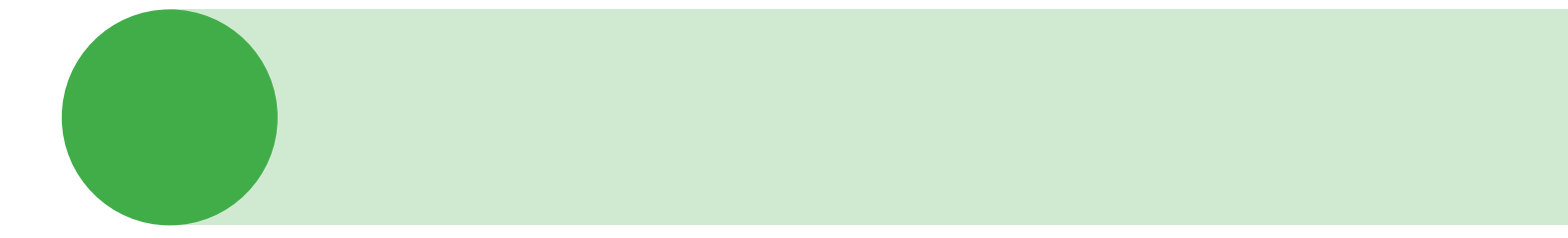
Public Outreach #3

January 19, 2023

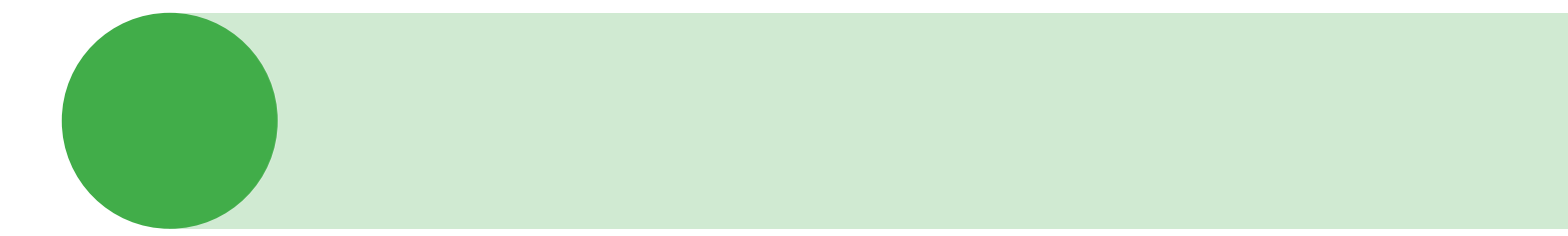


Welcome

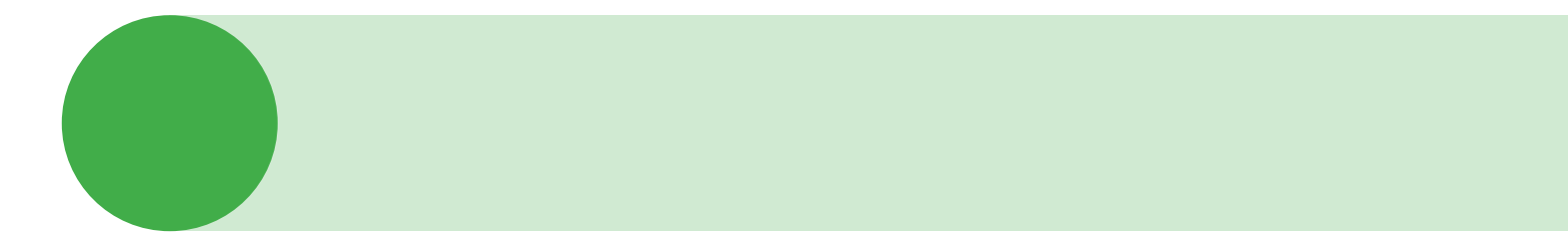
**Welcome: 6:30 - 6:40pm**



**Presentation: 6:40 - 7:15pm**



**Breakout Groups/Open Forum: 7:15 - 8:00pm**





# Agenda



Background



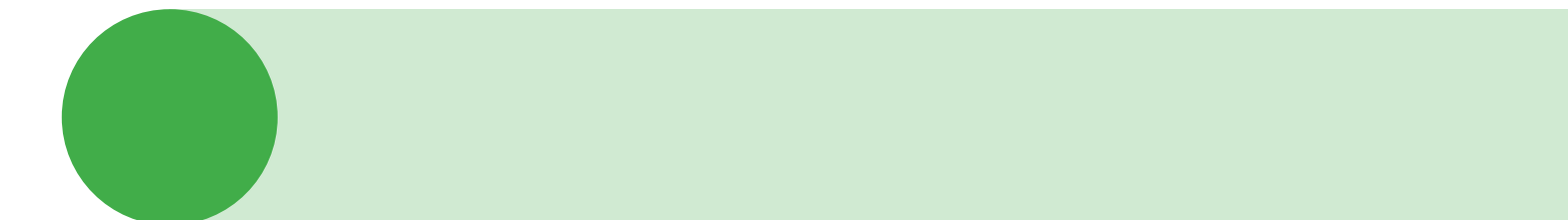
City Park System



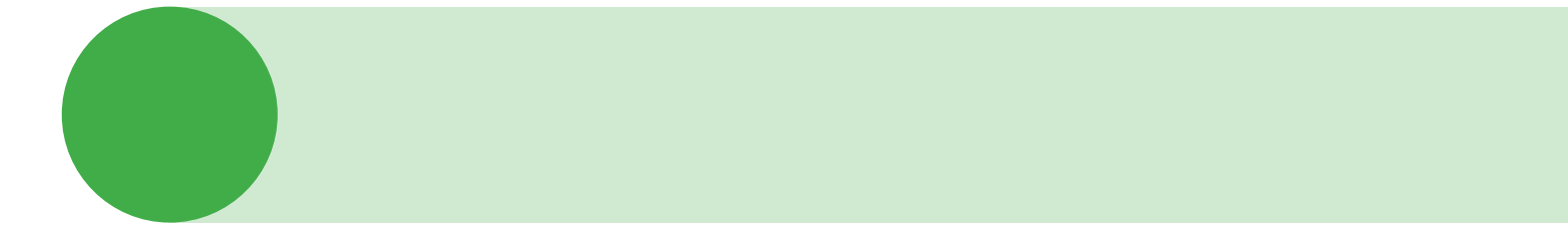
Project Overview



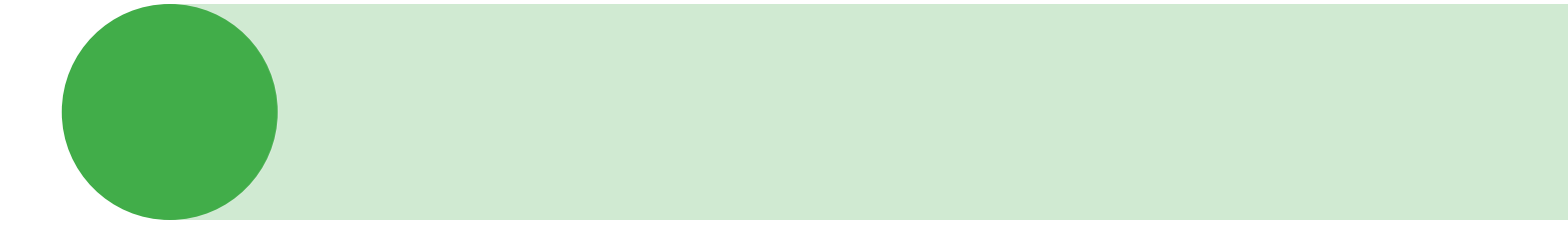
What We Heard



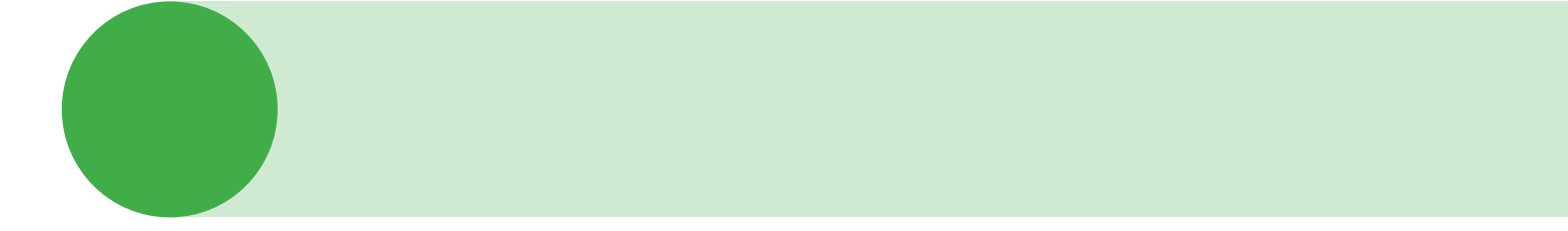
Concept Overview



Next Steps



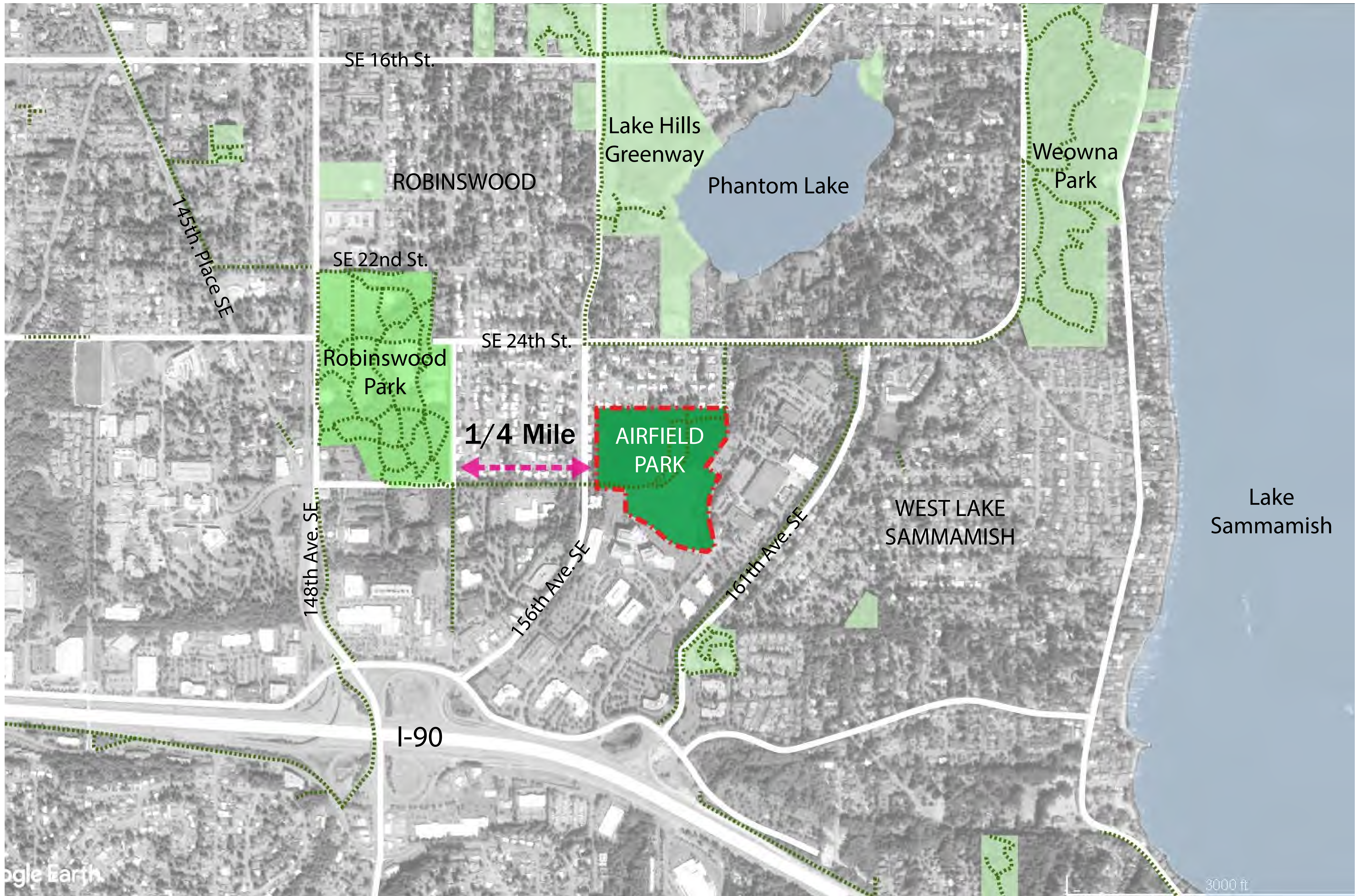
Open Forum





Background

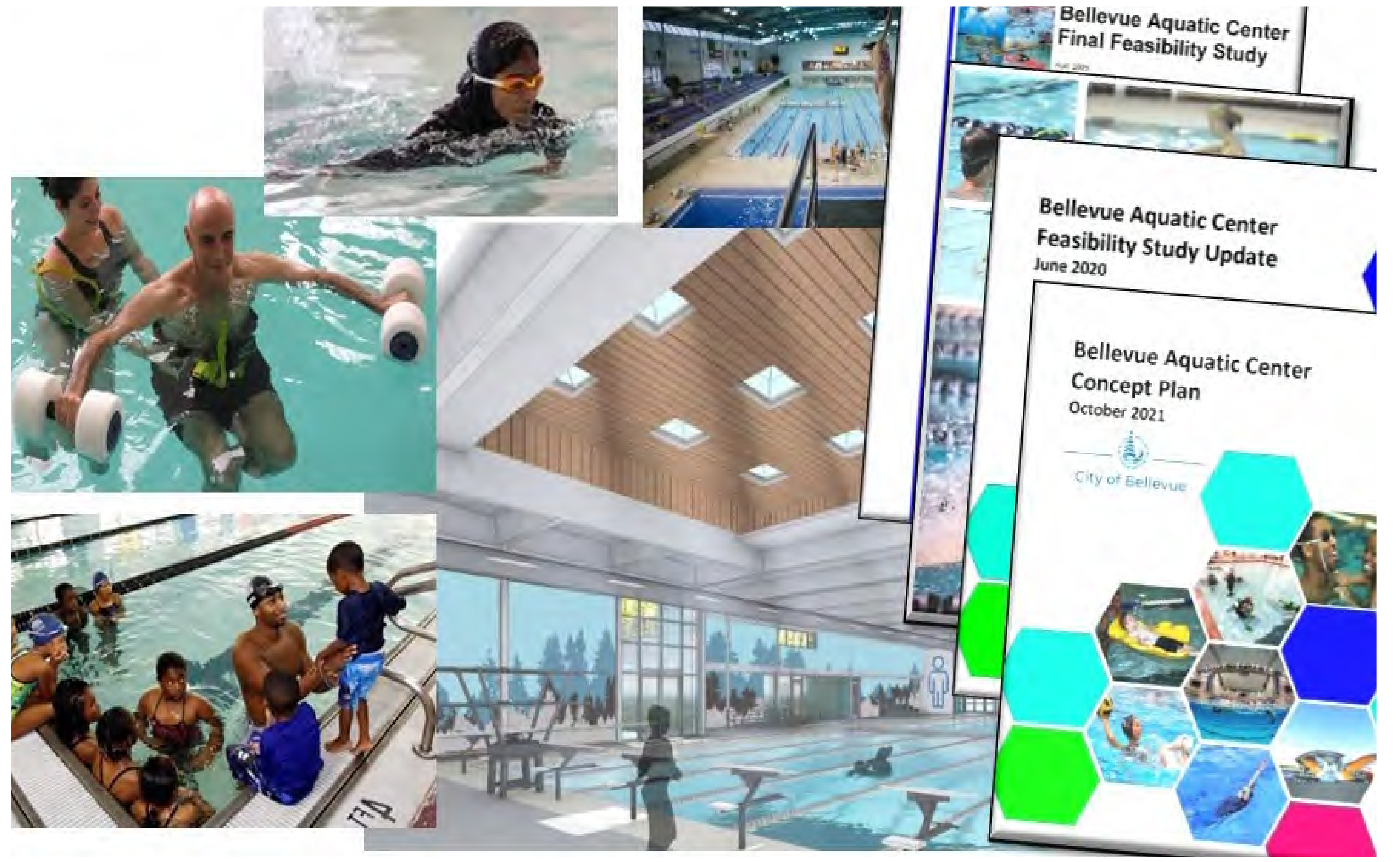








2012 Master Plan



Aquatic Center Studies

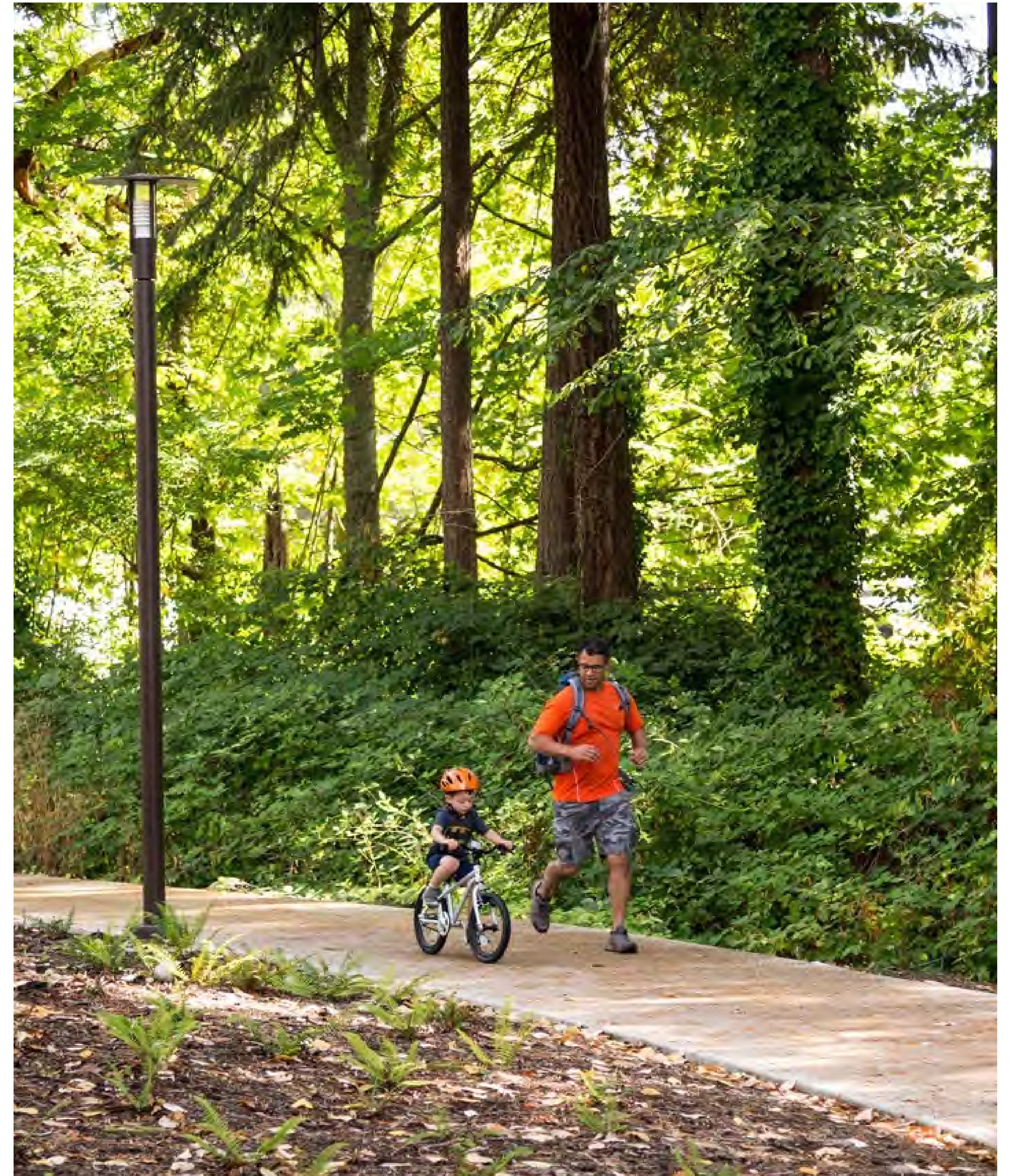


# City Park System



# Top Community Preferences

1. Trails
2. Beaches and Waterfront Parks
3. Unstructured Play/Picnic Areas
4. Parks with Display Gardens
5. Outdoor Sport Fields/Courts
6. Swimming Pool
7. Indoor Facilities







Sport Fields & Picnic Shelters



## 2022 Courts

Cherry Crest Mini Park	1
Crossroads Park	2
Eastgate Park	4
Hillaire Park	3
Lakemont Park	2
Norwood Village Park	2
Robinswood Tennis Center	2
Georgia Zumbieck Park	1
	<hr/>
	17

## 2023 Courts

Enatai Neighborhood Park	1
Highland Community Park	2
Spiritridge Park	4
Hillaire Park	3
Lakemont Park Restripe	2
	<hr/>
	12



*Eastgate Park - 2022*



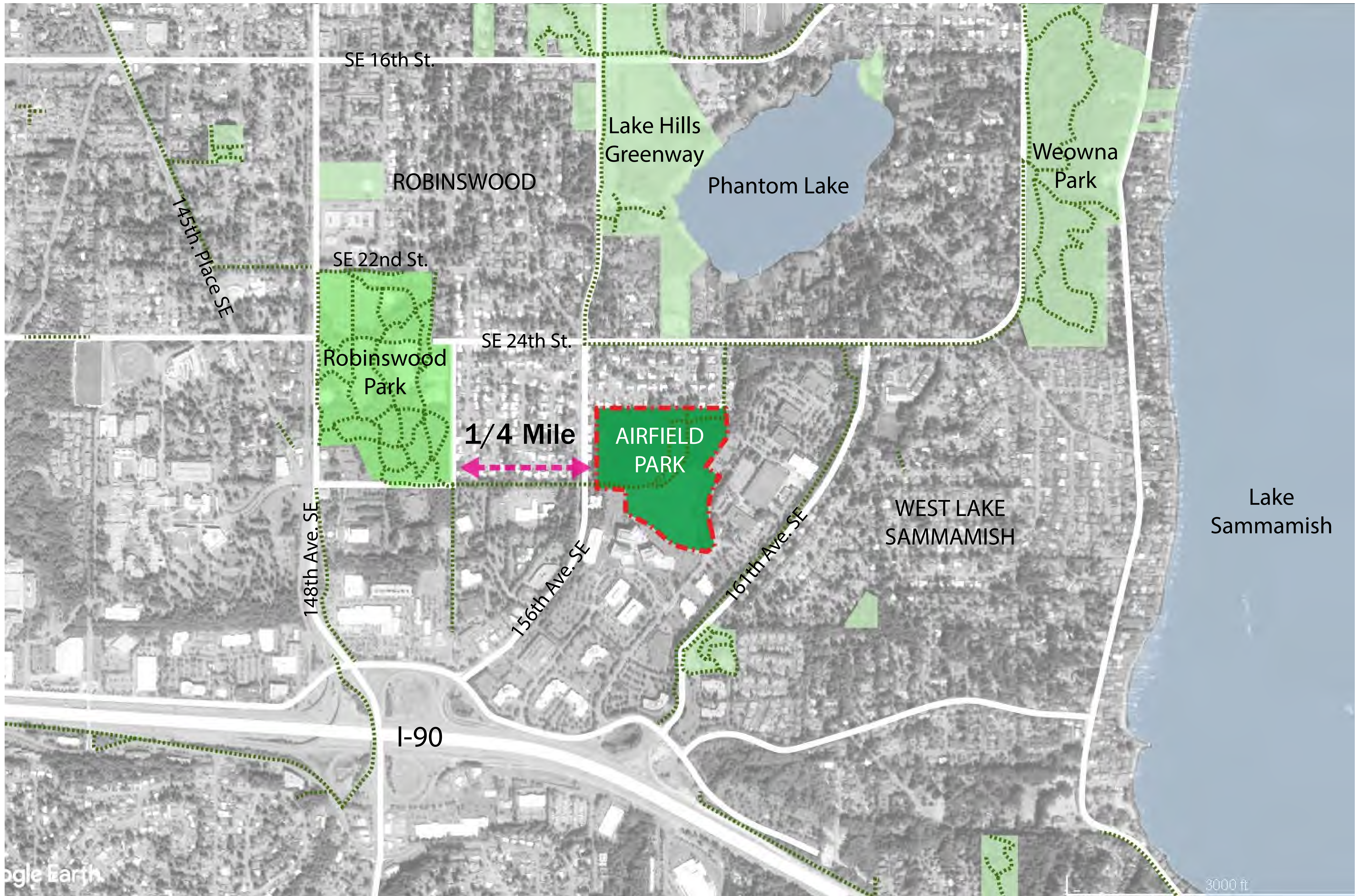
- Recreation Splash Family Pool
- Warmwater/Therapy
- Competition Pool
- Spectator Seating
- Deep Water/Dive Pool
- Fitness Facilities
- Class/Meeting/Event Space



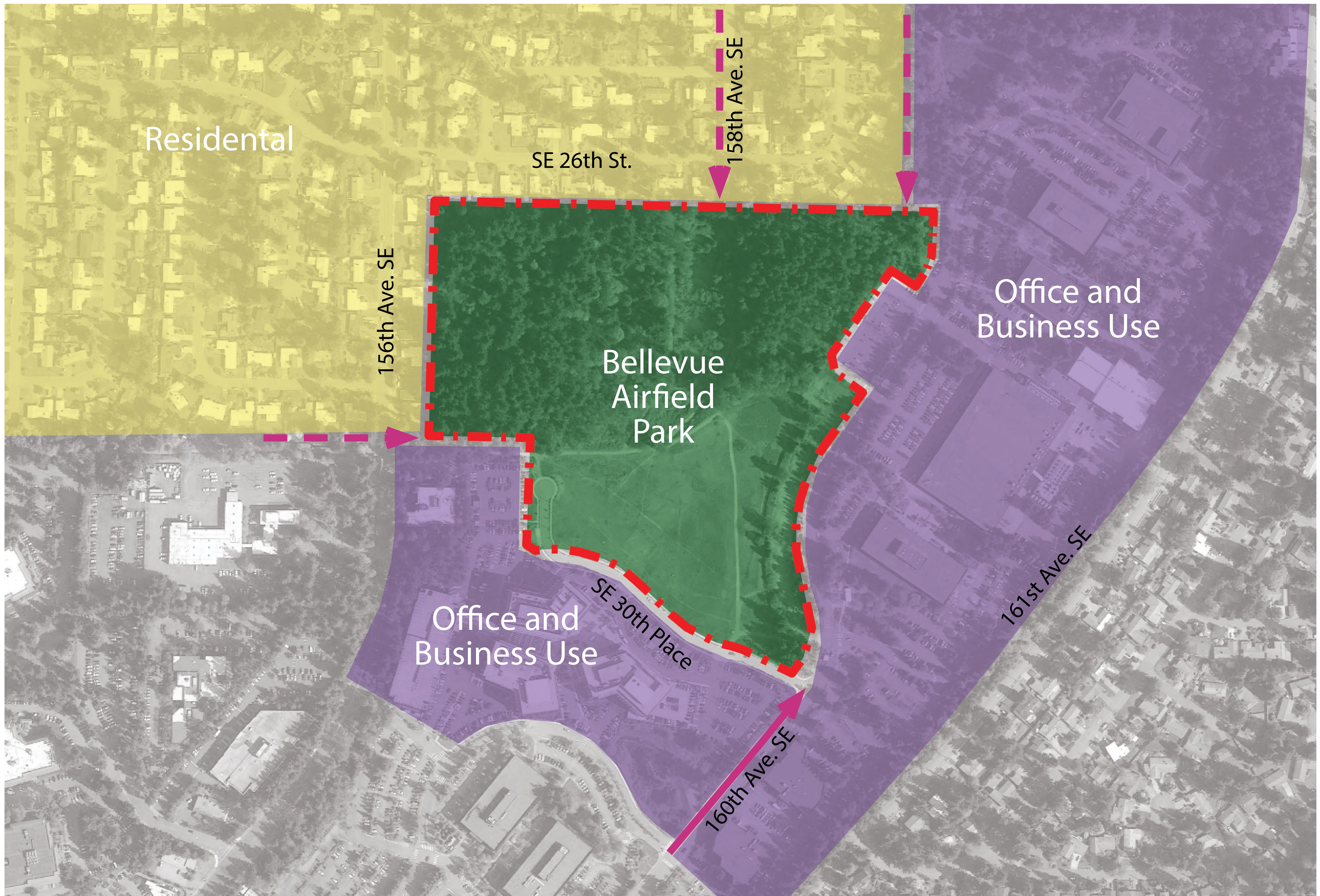


# Project Overview









 Vehicular Access (160th Ave. SE)

 Pedestrian Access

Land Use & Access





Existing Landfill









**27.5 Acre Site**

**16 Acres**

**Limited Opportunity:**  
Steep Slopes  
Existing Forest  
Proximity to Residential Neighbors

**11.5 Acres**

**Developable Park Space:**  
Relatively Flat  
Open Meadow  
Commerical Neighbors

Useable Park Area



# What We Heard



# Meetings

6/14 Parks & Community Service Board Kick-Off

6/23 Neighborhood Site Walk (≈35 Attendees)

7/26 Community Workshop #1 (≈60-70 Attendees)

9/22 Community Workshop #2 (≈82 Attendees)

10/11 Parks & Community Services Board

12/5 Bellevue City Council

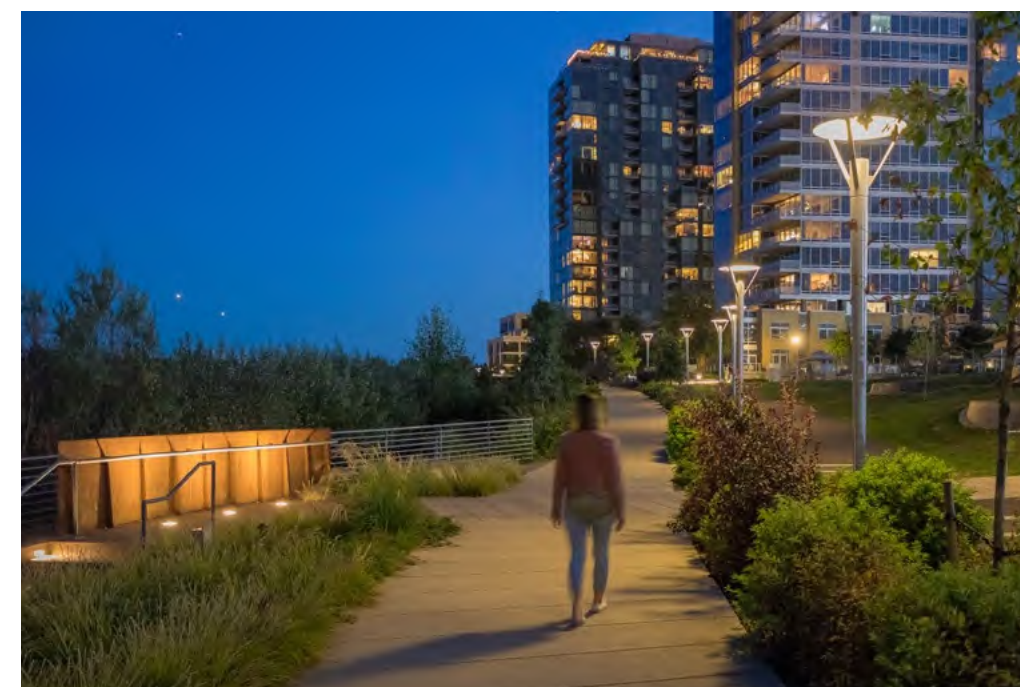




# Bellevue Airfield Park should be...



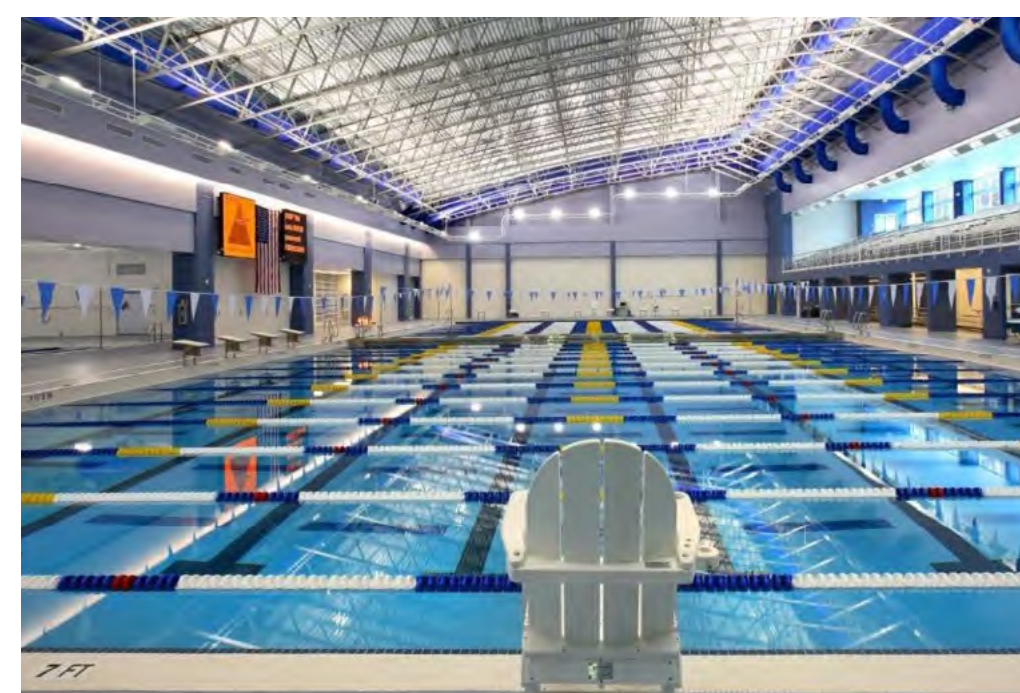
Inclusive



Safe



Environmentally Responsive



Active



PRESENTED AT OUTREACH EVENT #2 - SEPTEMBER 2022



Concept A



Concept B



# Community

- Have we found the right active/passive balance?
  - 41% - Yes
  - 43% - No, there is too much passive area
- Preferred Active Programs: Aquatics and Pickleball

# Adjacent Neighbors

- Preservation of 10-acre northwest woods

# Park Board Feedback

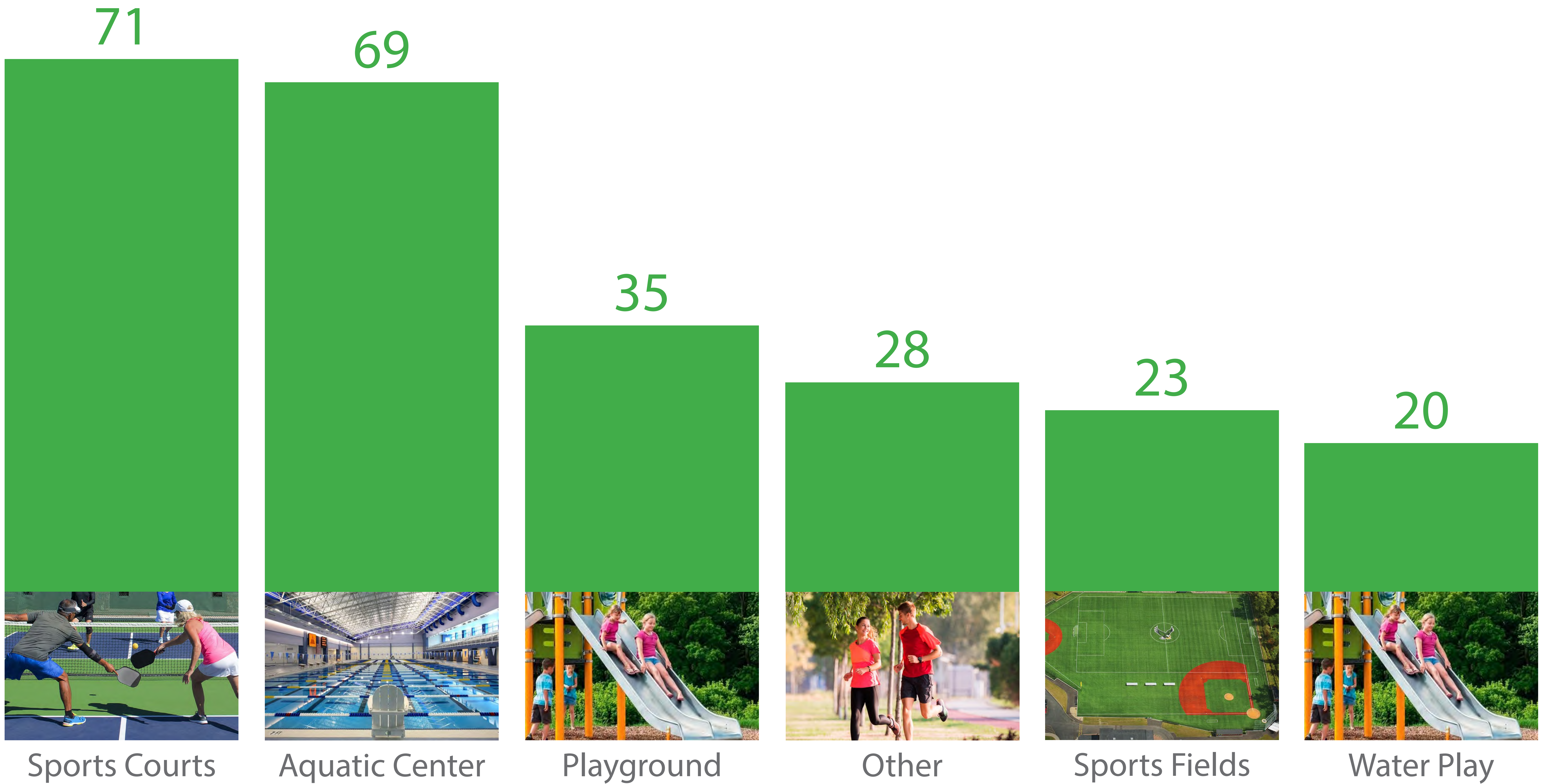
- Support Aquatic Facility and Pickleball Courts

# City Council Feedback

- Support Aquatic Facility and Sports Field



# Which active programs would most interest you in a park site?

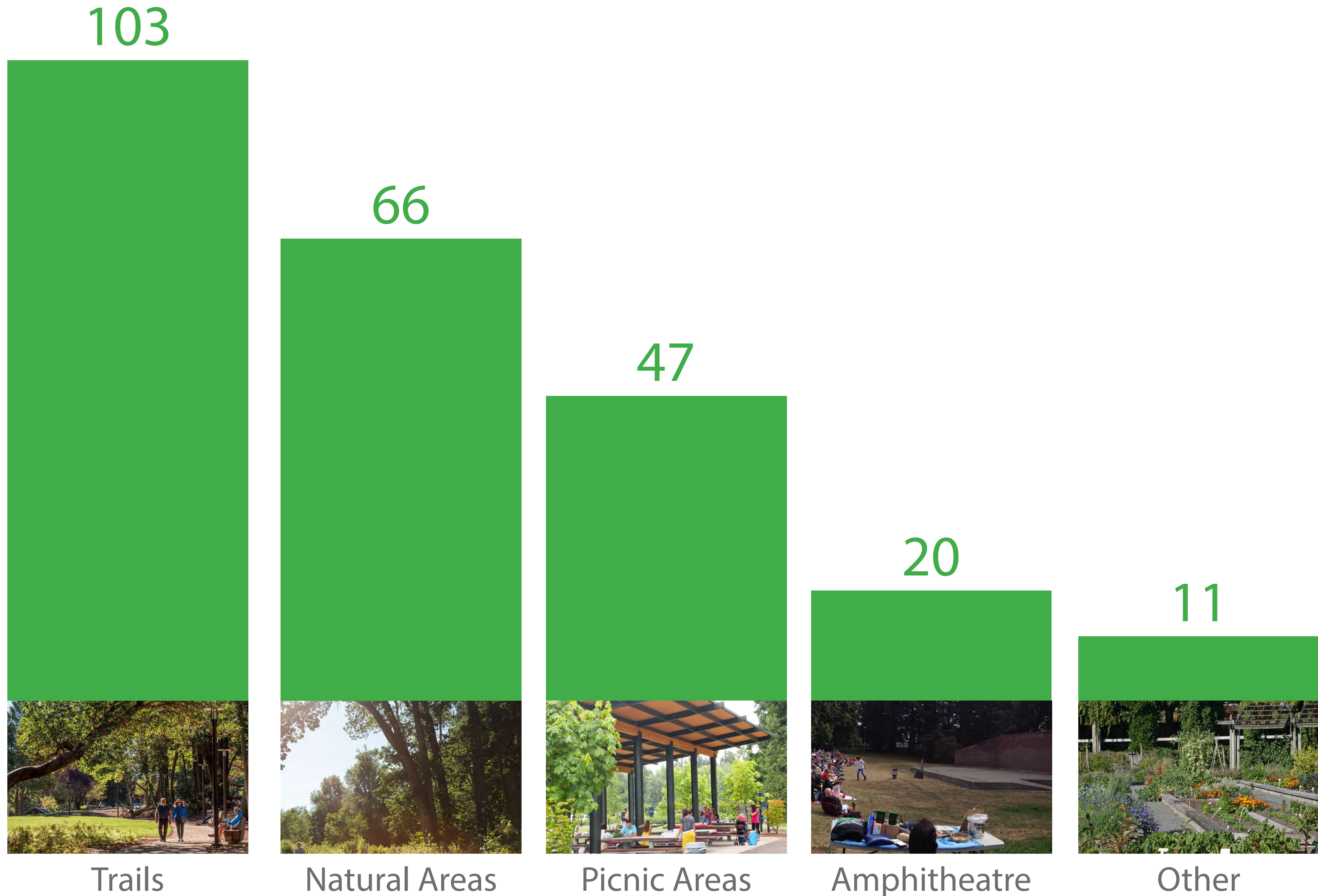


246 total votes

[Feedback](#)



# Which passive programs would most interest you in a park site?



247 total votes

[Feedback](#)



**WATER PLAY**



**SPORTS FIELD**



**STORMWATER**



**PICKLEBALL**



**PICNIC  
AREAS**



**BASKETBALL**



**PLAY AREAS**



27.5 Acre Site

16 Acres  
Limited Opportunity Zone

3.5  
Acres

Aquatic Center

Frontage/Buffer

Parking

Sports Field

Play Areas

Basketball

3.5

Pickleball

Acres

Water Play

Picnic Areas



# Concept Overview



# LEGEND:

- ① Parking Area
- ② Multi-Use Fields
- ③ Playgrounds
- ④ Basketball Court
- ⑤ Pickleball Courts
- ⑥ Splash Pad
- ⑦ Picnic Area
- ⑧ Amphitheatre
- ⑨ Stormwater Area
- ⑩ Restrooms
- ⑪ Aquatic Center
- ⑫ Potential Pickleball Expansion





# LEGEND:

- ① Parking Area
- ② Flexible Field
- ③ Playgrounds
- ④ Basketball Court
- ⑤ Pickleball Courts
- ⑥ Splash Pad
- ⑦ Picnic Area
- ⑧ Amphitheatre
- ⑨ Stormwater Area
- ⑩ Restrooms
- ⑪ Aquatic Center
- ⑫ Potential Pickleball Expansion







CONCEPT #1



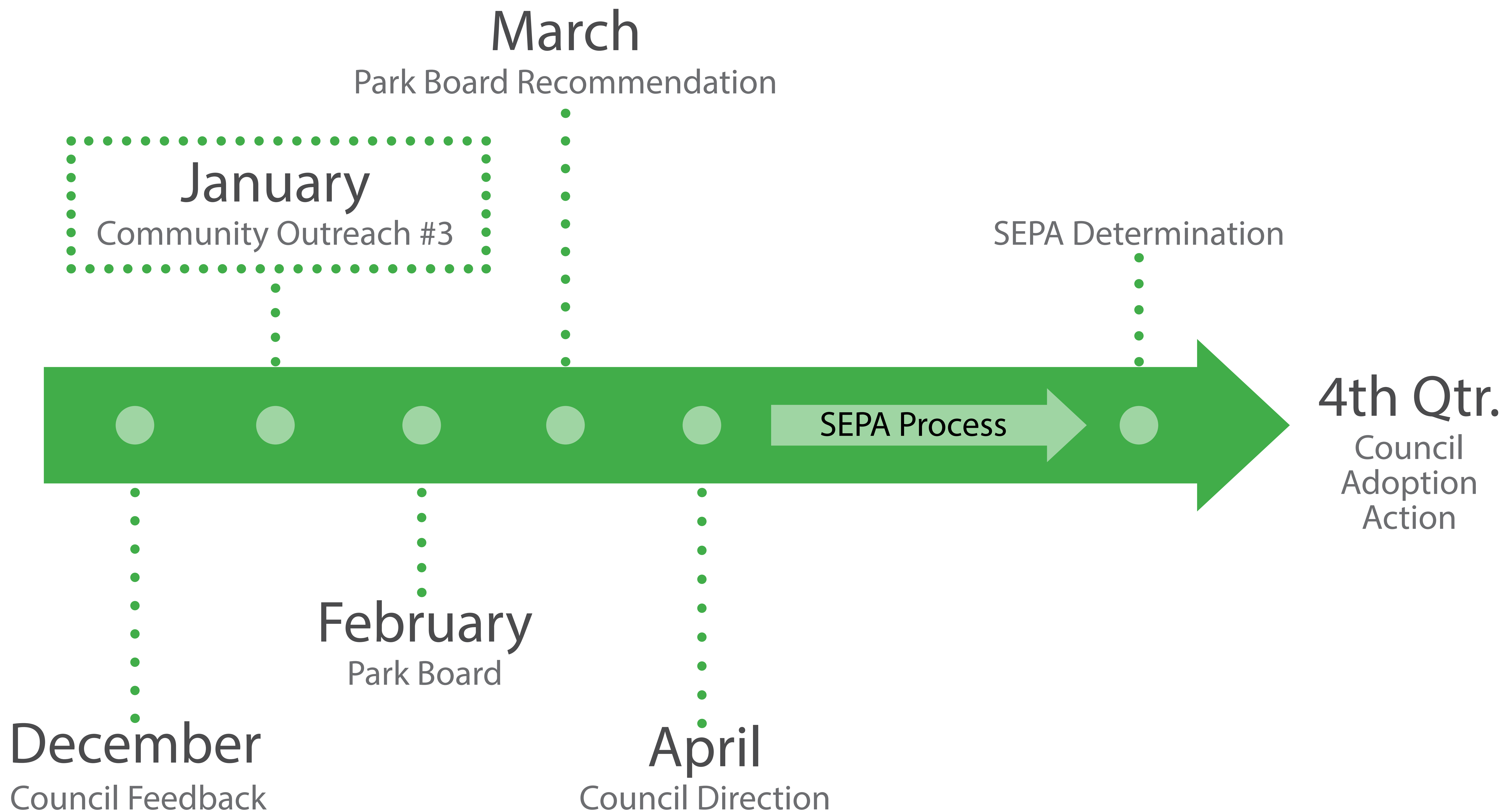
CONCEPT #2

Pickleball	Play Areas	Water Play	Basketball	Fields	Picnic
4 Courts (potential rooftop expansion)	Yes	Yes	Half Court	Baseball/ Softball & Soccer	6 Small Shelters in Forest & Overlook
8 Courts (potential rooftop expansion)	Yes	Yes	Half Court	Flexible Lawn	Large Shelter in Park & Overlook



Next Steps









# Thank you!

- **Your input is welcome anytime!**
- **You can call or email me anytime!**
- **All information we've shared this evening can be found on the Project website:**

<https://bellevuewa.gov/city-government/departments/parks/planning-and-development/current-projects/bellevue-airfield-park>

- **We very much would appreciate your completion of the survey here tonight, which will also be posted on the City's Web Page.**
- **At this point in the evening, we'd like to welcome you to join us at one of the stations to discuss and make sure we capture your ideas, concerns and preferences, as well as answer any questions you may have.**