



Sustainable Bellevue Community Townhall

February 2, 2022

Agenda

- Welcome + Online Poll
- Sustainable Bellevue Plan Overview
- Progress Updates
- 2022 Work Plan
- Next Steps
- Q+A with City Staff

Participant Poll



slido

Join at
slido.com
#SustainableBellevue



Sustainable Bellevue Plan Overview



Plan At A Glance

- 5 Focus Areas
- 77 Actions over 5 years
- Short and Long-Term Targets:
 - 2030 and 2050 for Community
 - 2030 and 2040 City Ops
- Implementation table with lead department, and implementation timeframe
- Monitoring and Evaluation approach
- Long-term actions to consider



Energy		Goal: Ensure long-term impacts of consumption
KPI	Progress	Targets
Renewable energy source (% renewable energy)	45% 2019	80% by 2030 100% by 2045
Energy consumption (% reduction in energy use)	5% ↑ since 2011	15% by 2030 30% by 2050

COMMUNITY ACTIONS

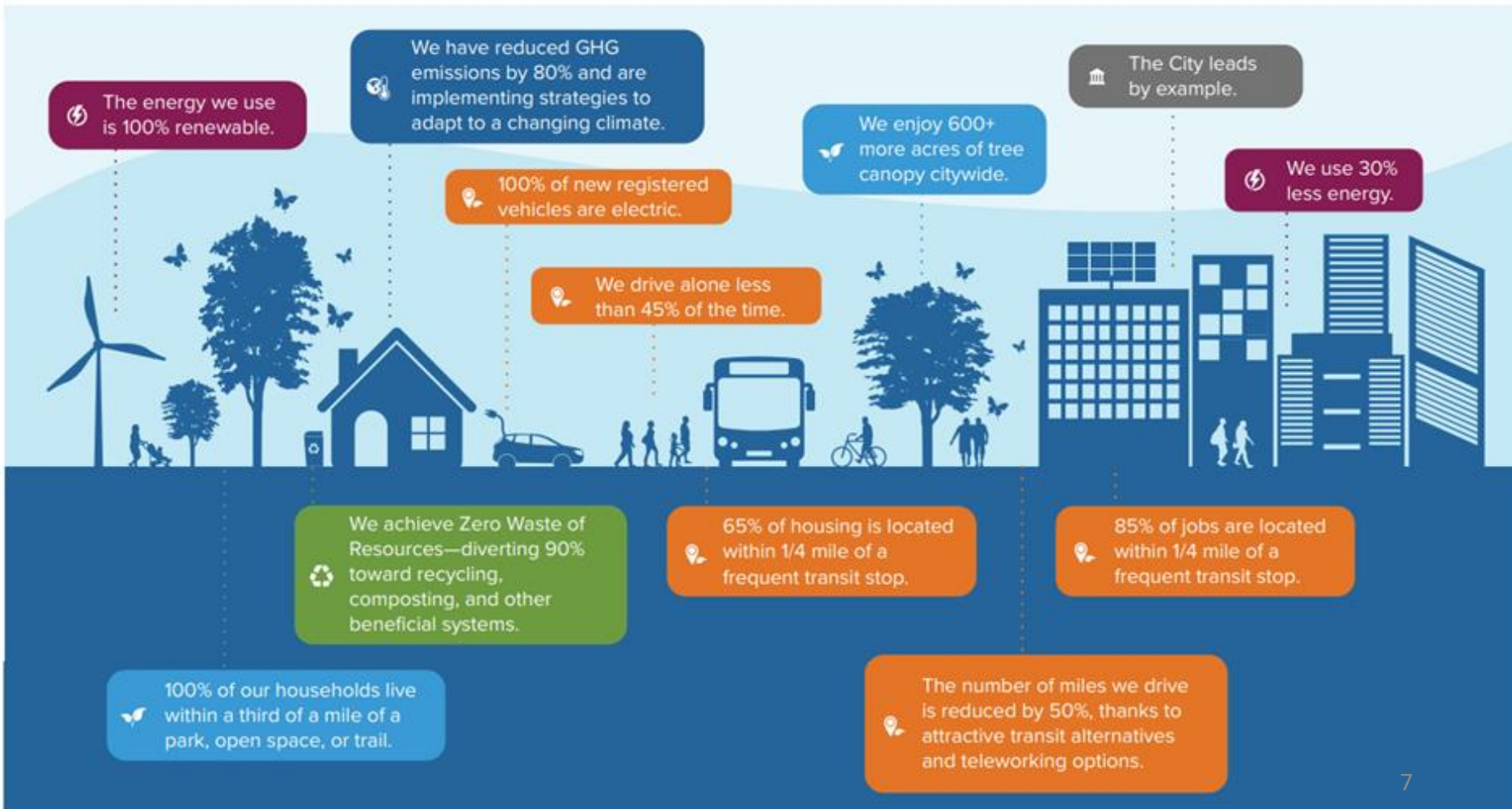
#	Action	Action Type	Impact	Investment	Co-Benefits	Lead	Timeframe
Strategy C.1. Mitigate emissions and plan for the long-term impacts of climate change.							
C.1.1	Climate vulnerability assessment. Perform a climate vulnerability assessment to understand long-term risks and vulnerabilities associated with climate change and identify next steps in terms of enhancing resiliency.	Analysis / Planning	High	Low	High	CD	2021-2022
C.1.2	King County Cities Climate Collaboration (K4C). Continue participating in the King County Cities Climate Collaboration to support the achievement of the collaborative K4C goals.	Policy / Staff	High	Low	High	CD	Ongoing
C.1.3	State advocacy. Advocate for state-level policies and funding that support the achievement of the plan goals.	Policy	High	Low	High	CMO	Ongoing

Sustainable Bellevue Vision



Goals and Targets

By 2050...



Implementation Updates



Sustainable Bellevue Partnership

ENVIRONMENTAL STEWARDSHIP INITIATIVE

Sustainable Bellevue Partnership

SUSTAINABILITY LEADERS GROUP

Businesses
Non-profits
Business organizations
Environmental organizations






WORKING GROUPS

Trees
Residential energy
Commercial energy
Climate resiliency

RESIDENTS

Single-family and
multi-family housing
Faith-based and
cultural groups
Schools
Home owner
associations

Plan Implementation Progress

Status	# of Actions	Description	% of Total
 Started	29	Work has started / implementation is partially complete	38%
 Ongoing	24	Work has been incorporated into ongoing operations	31%
 Complete	3	Work has been completed	4%
 Not started	21	Work has not begun	27%
 Barrier	0	Need to re-strategize approach. There is a barrier to implementing the action.	0%
Total	77		100%

www.Bellevuewa.gov/esiperformance

Parks & Open Space System Plan

~20-year plan, updated every 6 years

Long-range guidance for acquisition, development, and enhancement

Holds the big ideas!



Focus Areas

- **Open Space, Greenways, Wildlife Corridors, & Trails**
- **Park Facilities**
- **Active Recreation Facilities**
- **Urban Park Systems**
- **Waterfront Access**
- **Partnership Opportunities**
- **Historic, Cultural, & Art Resources**



Watershed Management Plan

- Goal: Improve the health of Bellevue's streams over the next 20 years
- Focus on factors limiting stream health (stormwater runoff, pollutants, loss of vegetation/floodplain, and fish passage barriers)
- Toolbox of actions to address limiting factors spanning Departments:
 - ✓ Projects
 - ✓ Programs,
 - ✓ Policy/code changes
 - ✓ Improved maintenance practices



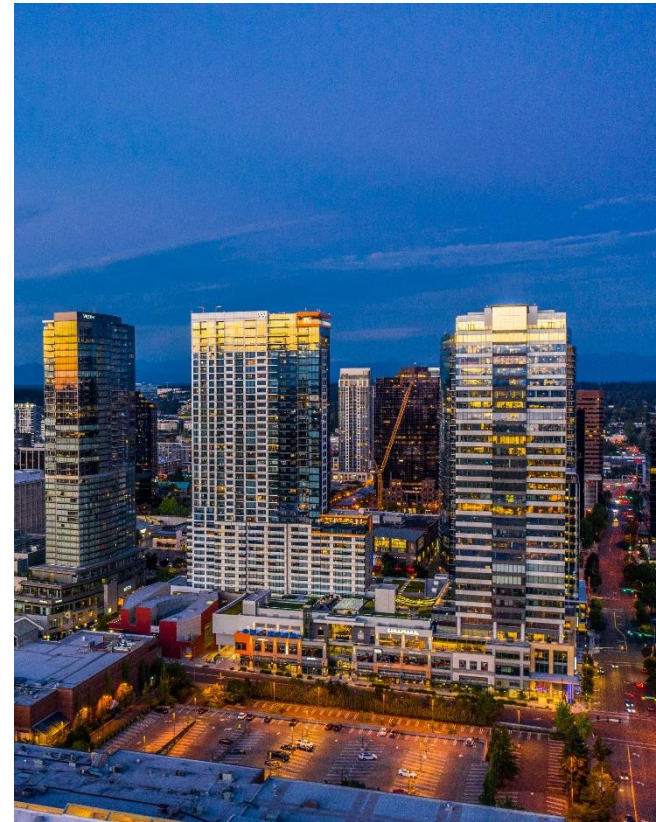
Green Fleet Strategy

- Completed Green Fleet Analysis in Q4 2021
- Developing implementation plan to meet 100% light-duty fleet electrification by 2040
- Evaluated electrical capacity and costs to upgrade building infrastructure
- Identified light-duty fleet vehicles eligible for electric vehicle (EV) replacements
- Tracking grant opportunities and seeking funding for capital improvement projects
- Fleet electrification can save the City \$2M or 15% based on total cost of ownership



Clean Buildings Incentive Program

- Support buildings 50,000 SF and above in complying with WA State Clean Buildings Act
- Provide support for energy benchmarking, energy assessments, and compliance requirements
- Support for Clean Buildings Act Early Adopter incentives and PSE incentives



Sustainable Bellevue - Engaging Bellevue Page



[Home](#) [Great Neighborhoods](#) [Current Projects](#) [All Projects](#) [City Website](#)

[Sign in](#)



[Home](#) » [Sustainable Bellevue - Taking Action](#)

Sustainable Bellevue - Taking Action



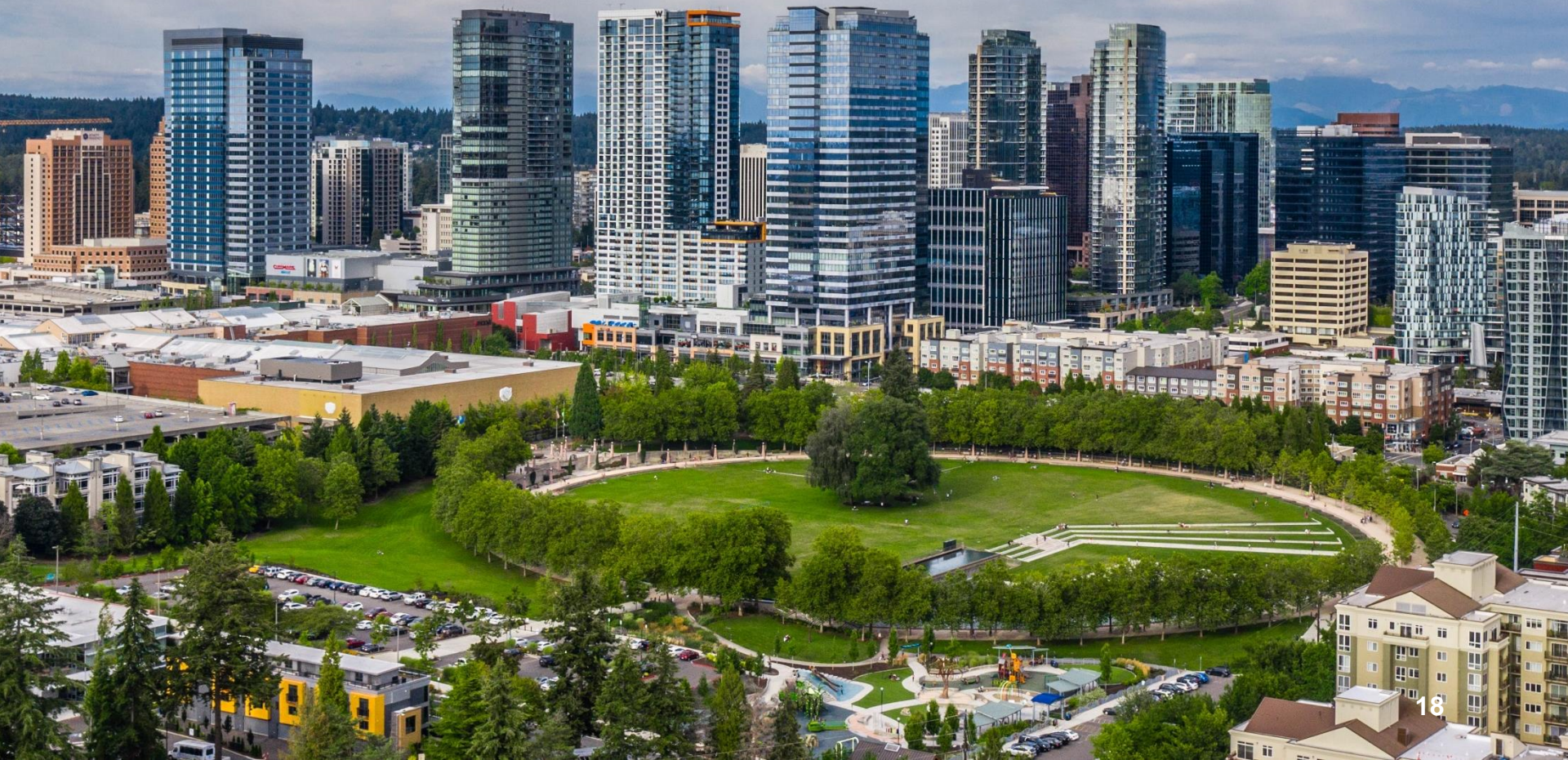
Key Dates

Environmental Stewardship Initiative Town Hall
February 02 2022

Tell Us How You'll Use the Page!



2022 Environmental Stewardship Work Plan



2022 Workplan

Action Highlights



Community Climate Challenge
Climate vulnerability assessment ★
Air quality and planning ★



Curbside Management Plan ★
Wilburton, BelRed ★



Clean Buildings Act Support
Home energy retrofit program



Multi-family recycling outreach



Green Fleet Strategy & Implementation ★
City Facility Energy Efficiency



Tree code update scoping ★
Tree Giveaway
Watershed Management Plan

Next Steps



City Council Quarterly update: February 7



Continue workgroup meetings to guide implementation



Track our progress

EngagingBellevue.com: register for more updates

Sustainable Bellevue newsletter

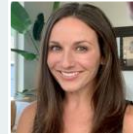
Question + Answer Panel



City Staff Introductions



Jennifer Ewing,
Environmental Stewardship
Program Manager



Ana Hagerup, Resource
Conservation Program
Manager



Geoff Bradley, Natural
Resources Manager,
Parks Department



Brian Landau, Engineering
Planning Manager, Utilities
Department

An aerial photograph of a city skyline, likely Bellevue, Washington, featuring numerous modern high-rise buildings with glass facades. The sky is blue with light clouds. A solid blue horizontal banner is positioned across the top of the image, containing the text 'Thank you!'.

Thank you!

Jennifer Ewing, Environmental Stewardship Program Manager
jewing@bellevuewa.gov; 425-452-6129
Community Development Department