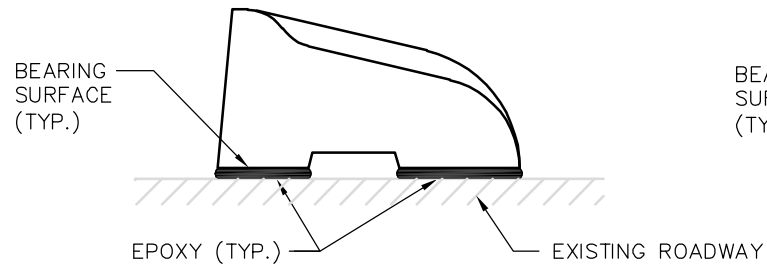
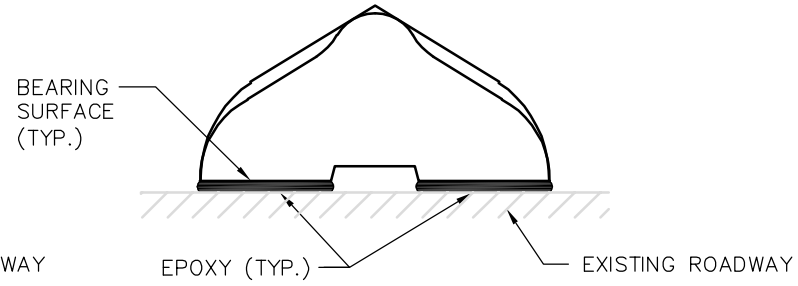


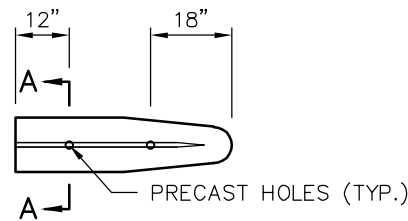
FOR MAINTENANCE OR EXTENSION OF EXISTING CURB ONLY. NOT FOR NEW INSTALLATIONS.  
 (FOR NEW INSTALLATIONS SEE STD. DWGS. CH-150-1 AND CH-160-1)



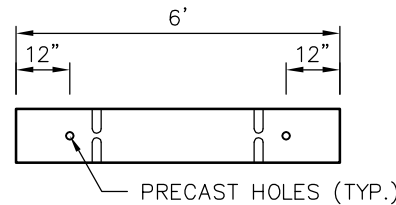
**SECTION - TYPE A CURB**



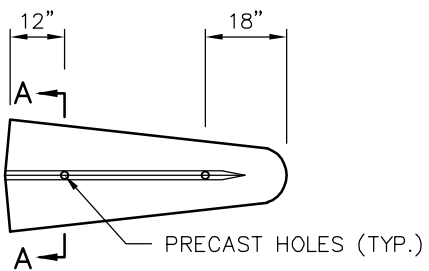
**SECTION - TYPE C CURB**



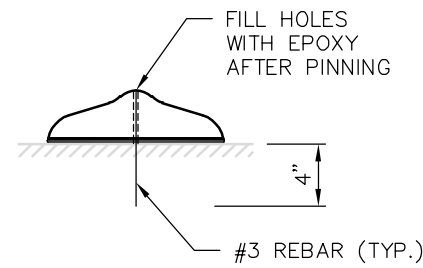
**TYPE C NOSING**



**TYPE C OR TYPE A CONNECTING DIVIDER**



**TYPE A NOSING**



**SECTION A-A**

**NOTES:**

1. NOSING AND NEXT TWO SECTIONS OF CURB SHALL HAVE HOLES PRECAST AS SHOWN.
2. PRECAST TRAFFIC CURB SHALL BE INSTALLED WITH AN EAS-60 TWO PART EPOXY. SEE STD. DWG. CH-300-1.
3. EPOXY SHALL BE PLACED UNDER THE BEARING SURFACE OF THE PRECAST TRAFFIC CURB.
4. SUFFICIENT EPOXY SHALL BE APPLIED TO ENSURE SQUEEZE-OUT OF 50% PER EACH SIDE OF EACH CURB SECTION.



**PRECAST TRAFFIC CURB INSTALLATION FOR MAINTENANCE OF EXISTING CURB**

DRAWING NUMBER	CH-140-1
SCALE	NONE
REVISION DATE	2/22
DEPARTMENT	TRANS