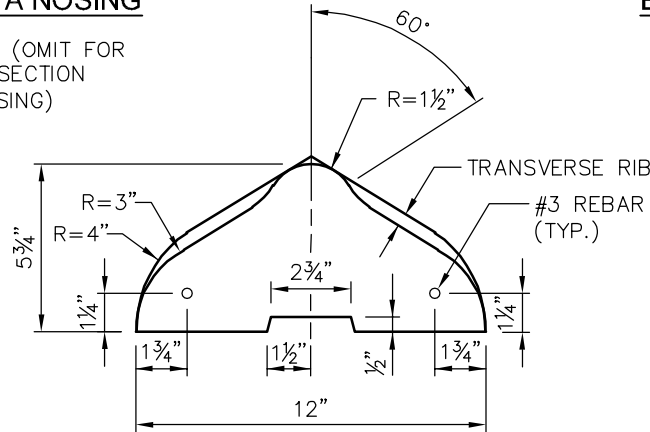
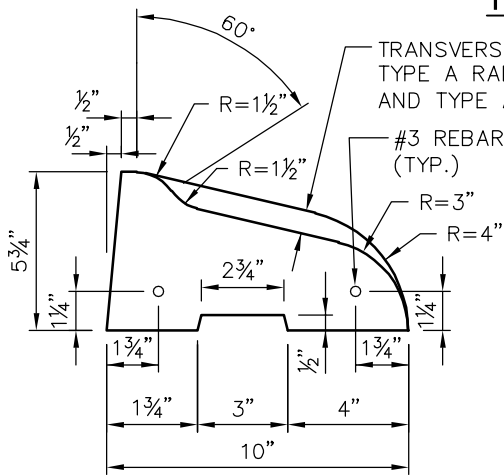
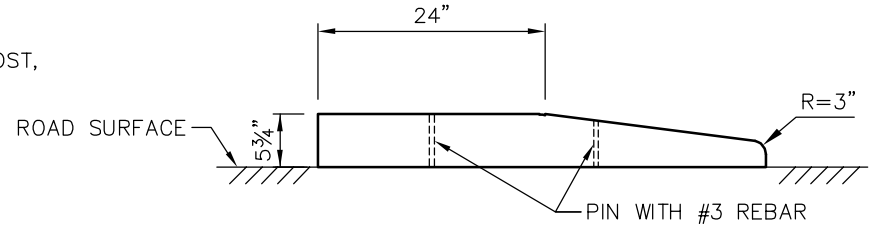
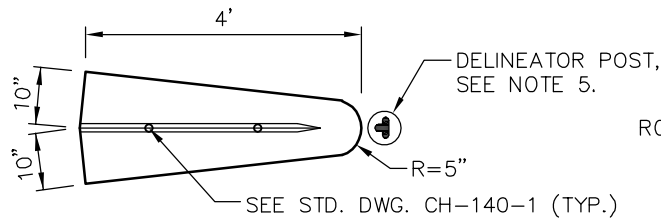
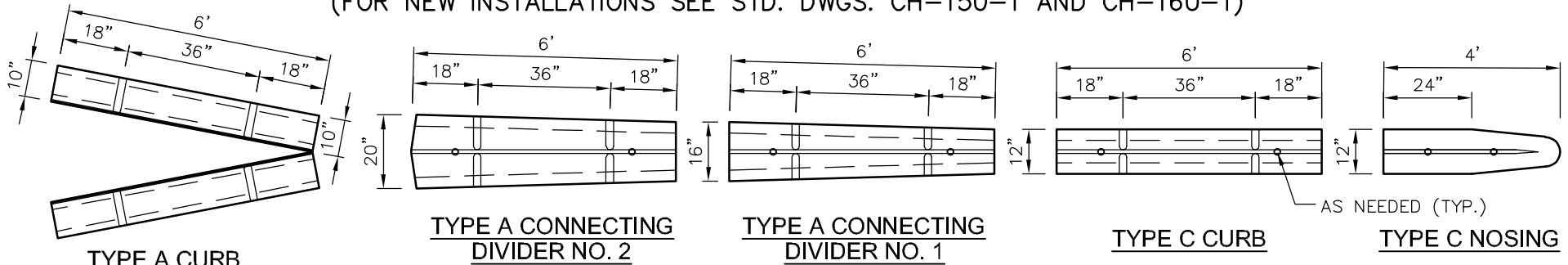


FOR MAINTENANCE OR EXTENSION OF EXISTING CURB ONLY. NOT FOR NEW INSTALLATIONS.  
 (FOR NEW INSTALLATIONS SEE STD. DWGS. CH-150-1 AND CH-160-1)



ELEVATION - TYPE A NOSING AND C NOSING

**NOTES:**

- ONLY 6' SECTIONS OF TYPE C AND TYPE A CURB SHALL BE USED ON ALL INSTALLATIONS, EXCEPT FOR NOTE 2.
- THE USE OF 1' BLOCK SECTIONS OF TYPE C AND TYPE A CURB SHALL ONLY BE USED TO FORM SMALL RADIUS CURVES OR ADJUSTMENTS IN FINAL LENGTH, AS APPROVED BY THE ENGINEER.
- ALL PRECAST TRAFFIC CURBS SHALL BE SECURED USING WSDOT APPROVED 2 PART EPOXY RESIN.
- PRECAST CURB NOSINGS AND NEXT TWO SECTIONS OF CURB SHALL BE BOTH PINNED AND EPOXIED TO THE ROAD SURFACE. SEE STD. DWG. CH-140-1.
- DELINEATOR POST MAY BE REQUIRED AT CURB NOSE.



PRECAST TRAFFIC CURBS  
 FOR MAINTENANCE OF EXISTING CURB

DRAWING NUMBER	CH-130-1
SCALE	NONE
REVISION DATE	2/22
DEPARTMENT	TRANS