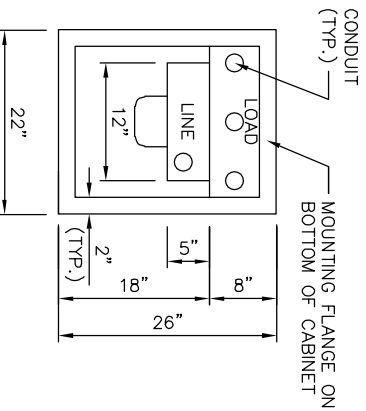


CITY OF BELLEVUE SERVICE CABINET FOR STREET AND TRAFFIC SIGNAL

COMPONENT SCHEDULE

- ① METERBASE: 200 AMP SAFETY SOCKET, 5th JAW INSTALLED AT 9:00 POSITION
- ② PANELBOARD: 120/240 VAC, 225 AMP COPPER BUS, 1 PHASE, 3 WIRE, SPLIT BUS, COPPER BUS, 22 KAIC BREAKERS
SIGNAL SECTION: MLO, 4CKT 1-30/1 SIGNAL BRANCH
ILLUMINATION SECTION: MAIN BREAKER, 150 AMP, 2 POLE
4-30/2 STREET ILLUMINATION BRANCH
1-15/1 CONTROL CKT BRANCH
1-20/1 GROUND FAULT RECEPTACLE BRANCH
2-20/1 SMALL WIRELESS FACILITY
2-20/1 DUPLEX RECEPTACLES
- ③ CONTACTORS: LIGHTING RATED, 120 VAC COIL,
4-REQUIRED FOR STREET LIGHTING AT 30 AMP, 4 POLE
- ④ TERMINAL BLOCK TO REMOTE PHOTO CELL (FOR CONTROL OF STREET LIGHTING),
INCLUDES 5" UNUSED DIN RAIL SPACE FOR FUTURE ENERGY METER.
- ⑤ PHOTO-CELL BYPASS SWITCH, SPDT, 15 AMP, UP TO 277 VAC
- ⑥ GROUND FAULT RECEPTACLE: 20 AMP, 125 VAC, DUPLEX

TYPICAL CONDUIT LAYOUT



- CABINET: NEMA 3R, PADMOUNT, 2 SCREENED, AND GASKETED VENTS
- DOORS: HEAVY DUTY STAINLESS STEEL HINGES (LIFT-OFF TYPE), 3 POINT LATCHES, STAINLESS STEEL VAULT HANDLES, "BEST" LOCK ON DISTRIBUTION DOOR, PADLOCKABLE METER DOOR WITH POLISHED WIRE GLASS WINDOW CLOSED CELL NEOPRENE GASKET, CARD HOLDER.
- FINISH: POLYESTER POWDER COAT, ZINC PRIME, ASA 61 GRAY INSIDE AND OUT, DEADFRONT AND WIREWAY COVERS WHITE.

NOTES:

1. CABINET SHALL MEET CURRENT ELECTRIC UTILITY SERVICE EQUIPMENT COMMITTEE (EUSERC) STD. 308.
2. ANCHOR BOLTS AND DATA FOR SPACING TO BE SUPPLIED BY CABINET MANUFACTURER.
3. FOR SERVICE CABINET FOUNDATION, SEE STD. DWG. SL-210-1 AND SL-211-1.
4. METER DOOR SHALL BE REMOVABLE, STANDARD HINGING ON LEFT, HINGING ON RIGHT SHALL BE AVAILABLE IF REQUIRED.
5. WHERE SMALL WIRELESS FACILITIES ARE POWERED FROM A CITY SERVICE, AN ETHERNET-READY ENERGY METER SHALL BE PROVIDED. THE DEVICE SHALL BE DIN-RAIL MOUNTED. AN ETHERNET CABLE SHALL BE INSTALLED FROM THE DEVICE TO THE TRAFFIC SIGNAL CONTROLLER CABINET IF THE SERVICE IS LOCATED WITHIN 300' OF A TRAFFIC SIGNAL CABINET.

SERVICE CABINET DETAIL

DRAWING NUMBER	SL-220-1
SCALE	NONE
REVISION DATE	2/22
DEPARTMENT	TRANS

