

How to read the Smart Water Meter

Meter register or meter read: The meter records water use in cubic foot (CF) units (1 CF = 7.48 gallons) and displays water usage down to the .001 cubic feet (shown in underlined digits).

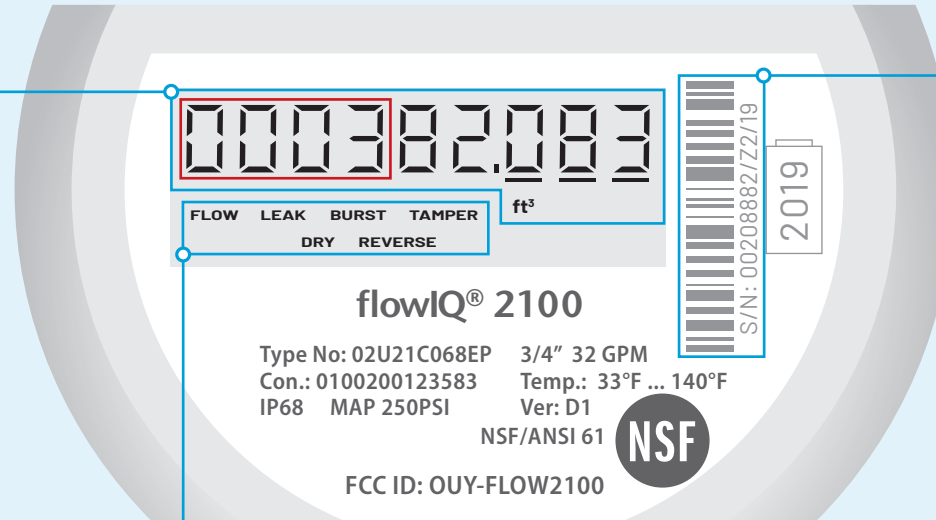
Bellevue Utilities bills in CCF (cubic feet x 100) units, so only the **first four numbers shown on the register (outlined in red)** are used for billing purposes.

Example read: This meter register shows 000382.083, which means the meter has recorded 382 cubic feet (CF), or 3.82 CCFs of water running through the meter since installation. The water bill would show 3 CCFs billed.

To check your water use for a specific period of time, follow these steps:

- Record the meter read.
- Wait a defined period of time (for example, 1 hour, 1 day, 1 week, etc), then record the read again.
- Subtract the first recording from the second. This shows how much water has run through your meter during that time period.

To preserve battery life, the meter display only updates once every 32 seconds.



Meter number: Each meter has a unique serial number, also shown on your bill.

Match the number on your bill to the serial number on the meter to verify which meter serves your property.

Meter info codes: One or more of these may be displayed if the meter is detecting certain usage anomalies.

FLOW This word is displayed when water is actively flowing through the meter—when water is being used on your property. It does not appear instantly when flow begins, and it may remain on the display for up to 32 seconds after flow has stopped.

LEAK This word is displayed if water use exceeds a minimum threshold for each hour within any 24-hour period. Most residences have at least one hour of the day (typically at night) when no water is used. If the meter detects at least a small amount of water being used in each hour of the day and night, this code will be displayed on the meter, indicating you might have a water leak.

BURST This word is displayed when a large volume of water has flowed through the meter in a short period of time. This could be caused by a burst pipe or triggered under normal conditions such as a running irrigation system.

TAMPER This word is displayed when an attempt to tamper with the meter is detected.

REVERSE This word indicates that water has been flowing through the meter in the reverse direction continuously for a full 5 minutes. Situations to cause this are rare and unusual.