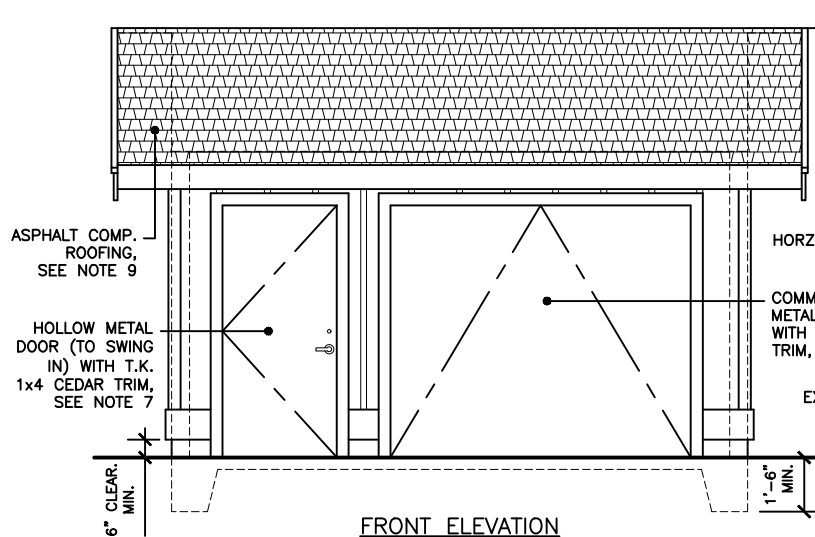


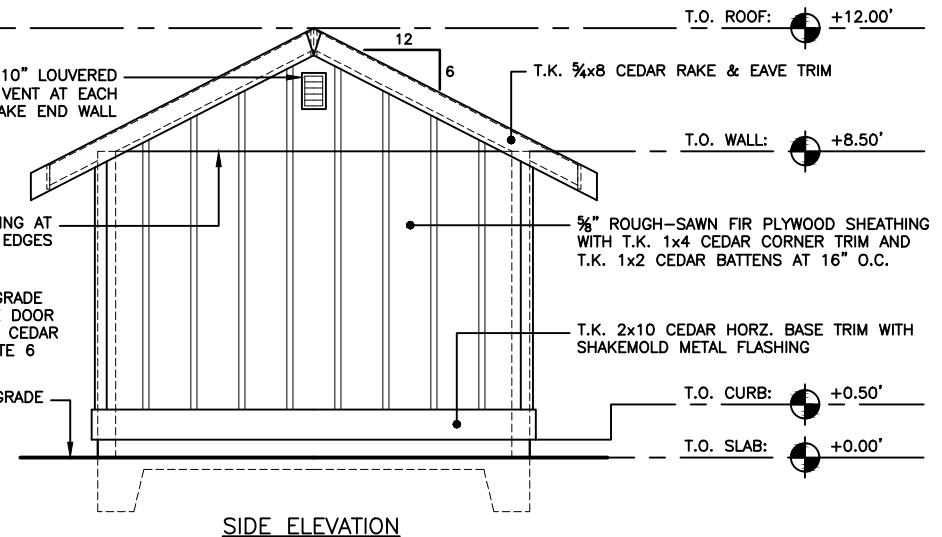
PLAN VIEW

NOTES:

1. ALL DIMENSIONS TO FACE OF FRAMING, UNLESS OTHERWISE SPECIFIED.
2. THE CONCRETE SLAB AND CURB SHALL BE MONOLITHIC.
3. CONCRETE REINFORCEMENT:
 - (2) #4 REBAR AT BOTTOM OF FOOTING
 - (1) #4 REBAR AT TOP OF CURB
 - WWF 6x6 W2.9xW2.9, CENTERED IN 4" SLAB
 - 1/2"x10" ANCHOR BOLTS AT 6'-0" O.C. MIN. WITH (1) BOLT AT EACH END OF WALL (12" MAX./4" MIN. FROM END OF 2x WALL PLATE) WITH 1/4"x3"x3" PLATE WASHERS AT EACH BOLT.
4. DOOR HEADERS TO BE D.F. #2 OR BETTER 6x10 WITH (2) BEARING STUDS AND 1 FULL HEIGHT STUD AT EACH END.
5. ROOF FRAMING SHALL BE D.F. #2 OR BETTER 2x6 AT 24" O.C. WITH 2x6 COLLAR-TIES AND 1/2" CDX SHEATHING (SEE WALL NOTE FOR NAILING PATTERN).
6. GARAGE DOOR SHALL BE STYROFOAM INSULATED 20 GA. SECTIONAL WITH VINYL BACKING.
7. HARDWARE AND LOCK FOR METAL DOOR SHALL BE STANDARD BELLEVUE PARKS SPECS.
8. USE SIMPSON METAL FRAMING CONNECTORS AT ALL RAFTER AND HEADER LOCATIONS.
9. ROOFING TO BE PABCO PREMIER WEATHERED WOOD, OR APPROVED EQUAL, WITH RIDGE CAP AND PRE-FINISHED METAL DRIP FLASHING.
10. ALL EXTERIOR WALLS AND TRIM TO RECEIVE 2 COATS OF PRIMER AND 2 COATS OF PAINT. PRIMER TO BE BENJAMIN MOORE EXTERIOR LATEX SUPER SPEC., OR APPROVED EQUAL. PAINT FOR WALLS, BATTENS AND EAVES TO BE BENJAMIN MOORE EXTERIOR BRIARWOOD, OR APPROVED EQUAL. PAINT FOR TRIM TO BE BENJAMIN MOORE EXTERIOR WHITE, OR APPROVED EQUAL.



FRONT ELEVATION



SIDE ELEVATION



City of
Bellevue

TITLE:

12' x 16' STORAGE BUILDING

DRAWING #:	PK-SF-06
SCALE:	N.T.S.
REVISION DATE:	12-2018
DEPARTMENT:	PARKS