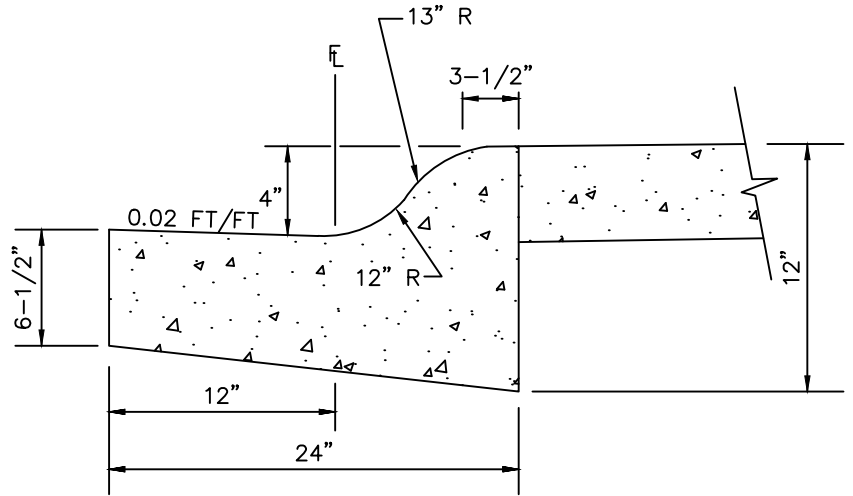
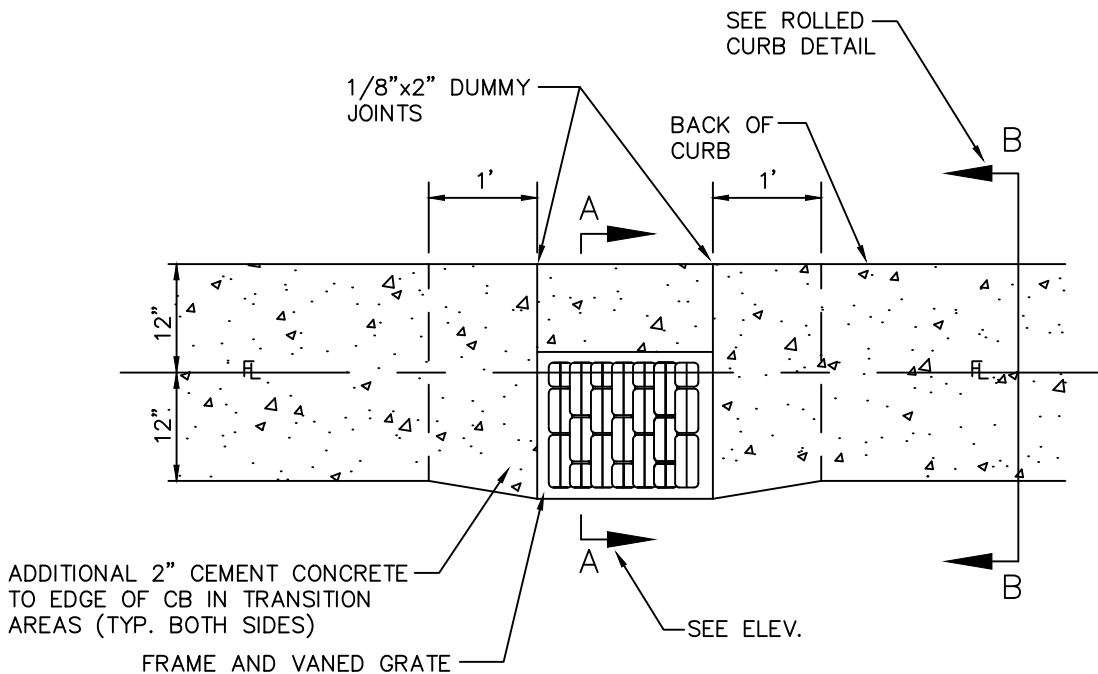


ELEVATION A-A



ELEVATION B-B



**NOTES:**

1. WHEN A THRU-CURB INLET IS REQUIRED, USE A ROLLED CURB FRAME AND GRATE.



City of  
Bellevue

STORM AND SURFACE  
WATER UTILITY

TITLE

GRATE FOR EXISTING  
ROLLED CURB INSTALLATION