



Transportation

Access ●●● ●●● Bellevue 2020

Keeping Bellevue moving forward



Image: Sound Transit





TRANSPORTATION NETWORK

Multimodal transportation system is Bellevue's norm

More than 145,000 people call Bellevue home. On any given weekday, more than 150,000 people work in Bellevue. As Bellevue's population and workforce grow, so do the demands placed on our transportation network.

Bellevue is committed to providing a safe, reliable and accessible transportation system that gets people where they want to go – whether they choose to walk, bicycle, drive or ride transit. A transportation system that supports all these mobility options is called “multimodal” and it's Bellevue's norm.

We plan for Bellevue's growing demand for mobility through strategies such as:

- Smart Mobility Plan
- Pedestrian and Bicycle Implementation Initiative
- Downtown Transportation Plan
- Transit Master Plan

These plans consider all users of the transportation network – pedestrians, bicyclists, drivers, freight mobility and transit riders – and often result in building the network's foundation, or infrastructure. This foundation is a connected system of sidewalks, multipurpose paths, trails, bike lanes, bus lanes, roadways and other elements. New to our portfolio are mini-roundabouts and, soon, light rail.

We explore technologies, like ride share applications, to ensure our systems sustain transportation needs well into the future. We advocate to state and federal legislators on laws and transportation projects that keep people moving in Bellevue. We involve neighbors and businesses in designing projects that enhance their mobility.



TRANSPORTATION NETWORK



But it's not just Bellevue planning this way, it's also our transportation partner agencies. The Federal Highway Administration, Washington State Department of Transportation, Sound Transit, King County Metro and neighboring cities plan, design and build their networks to support multiple transportation choices.

We encourage you to note of how Bellevue's streets, sidewalks, bike lanes and bus stops connect within the city to schools, jobs, stores and parks – and to the wider region. With East Link light rail, extended I-405 express toll lanes, a growing regional trail system and bus rapid transit expanding the reach of our system in the coming years, challenge yourself to become more multimodal. Maybe it will become your norm.





ACCESS BELLEVUE

“Access Bellevue” is the city’s communications initiative to provide information about the East Link light rail project and surrounding construction. This is the third edition of the citywide mailer. It features East Link, city transportation projects in the BelRed area and resources to help Bellevue businesses, residents and commuters deal with construction impacts. Additional information can be found at BellevueWA.gov/accessbellevue.

Should you wish to receive this content in a language other than English, please contact Marie Jensen, Public Involvement Manager, Bellevue Transportation Department, 425-452-2064 or mjensen@bellevuewa.gov.



Image: Sound Transit

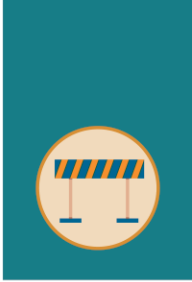
View of Spring District and Downtown Bellevue



For alternate formats, interpreters, or reasonable accommodation requests please phone at least 48 hours in advance 425-452-2064 (voice) or email mjensen@bellevuewa.gov. For complaints regarding accommodations, contact City of Bellevue ADA/Title VI Administrator at 425-452-6168 (voice) or email ADATitleVI@bellevuewa.gov. If you are deaf or hard of hearing dial 711. All meetings are wheelchair accessible.

정보	Information	資料
जानकारी		اطلاعات
సమాచారం		Информация
معلومات		Thông Tin
情報 (じょうほう)		Información
	425-452-6800	
	<small>Available in Other Languages</small>	

The City of Bellevue ensures that no person shall on the grounds of race, color, national origin, or sex as provided by Title VI of the Civil Rights Act of 1964, and related statutes, be excluded from participation in, be denied the benefits of, or be otherwise subjected to discrimination under any City of Bellevue program or activity. Any person who believes his/her Title VI protection has been violated may file a complaint with the ADA/Title VI Administrator. For Title VI complaint forms and advice, please contact the ADA/Title VI Administrator at 425-452-6168.



The nature of construction

Bellevue is experiencing significant public and private development. Along with the many benefits of living in a growing region, the robust construction that comes with it can cause inconveniences such as detours, noise and street or sidewalk closures. As much as we try to minimize impacts by coordinating with contractors, among city departments and with other public agencies, it's not always possible to eliminate delays – or frustrations. Tight schedules, limited detour options and noise considerations all have an effect.



The nature of construction may, at times, get the best of you. If it does, let us know. You can reach us via

phone, email, or the MyBellevue app. We publish a great deal of construction information and encourage you to follow us on social media, check our webpages and subscribe to alerts so that you stay informed. Check out the “Resources” pages near the end of this booklet for how to get in contact.

Construction zone safety

It's important that pedestrians, bicyclists and drivers be aware of their surroundings – especially near construction zones. Do not be distracted with a mobile device, keep calm if your commute is delayed due to construction and follow traffic control signs and flaggers' instructions.

An octagonal icon showing a driver in a car. The driver is on the left, and a pedestrian is on the right, walking past a construction barrier.

**DRIVE SAFELY
IN WORK ZONES**

Follow
signs
and
detours

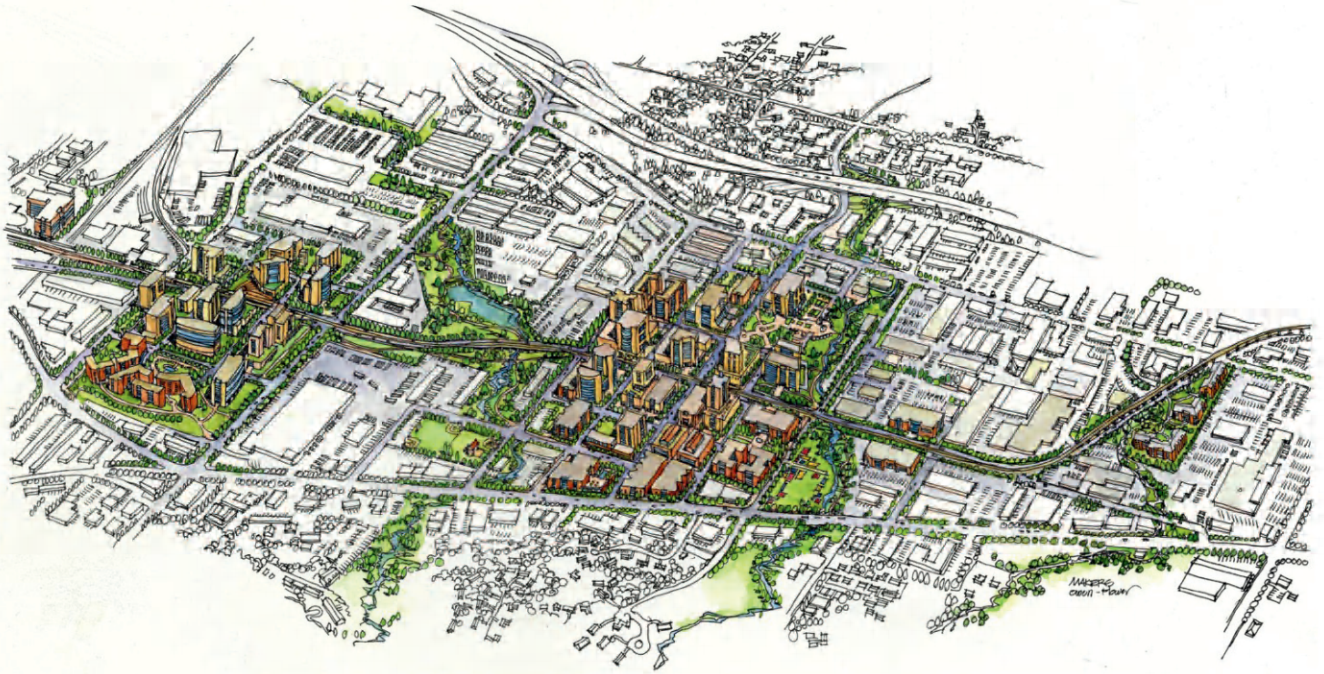
A diamond-shaped icon showing a pedestrian walking on a sidewalk. A construction barrier is on the left.

**WALK SAFELY
IN WORK ZONES**

Follow
signs
and
detours



BELRED TRANSFORMATION



BelRed's transportation network emerges

After more than a decade of planning and construction work, a brand-new transportation grid is evolving in the BelRed area. The transformation comes just in time to help employees arriving at new buildings occupied by REI and Facebook, students at the UW's Global Innovation Exchange and new residents at nearby apartment buildings.

The City is implementing a range of improvements along four corridors – Northeast Spring Boulevard, 120th Avenue Northeast, 124th Avenue Northeast and 130th Avenue Northeast – to better connect pedestrians, bicyclists, drivers as they travel to and from Bellevue's newest neighborhood. For details about improvements to each of these streets, see pages 8-10.

By the end of 2020, the city will complete improvements and open the new Northeast Spring Boulevard, between 116th and 124th avenues northeast. To celebrate, a community event will be held later this year.

Construction on the next segment of Northeast Spring Boulevard, from 130th to 132nd avenue northeast, will begin in late 2020. Additional funding will be needed to complete the segment from 124th to 130th avenue northeast.

Construction of the first phase of roadway improvements between Northeast Spring Boulevard and Ichigo Way continues at a steady pace along the 124th Avenue Northeast corridor and will wrap up by fall. Safety improvements between Northeast 8th Street to Northeast 12th Street will start soon and be completed in the fall as well. Design and property acquisition work are underway for two phases of 124th Avenue Northeast corridor.

BELRED TRANSFORMATION



The second phase between Northeast 12th Street and Northeast Spring Boulevard is expected to start in winter of 2021.

In addition, design and property acquisition work is under way to redevelop the 130th Avenue Northeast corridor, stretching from Northeast Bel-Red Road to Northeast 20th Street. As part of an agreement with Sound Transit, the city is building a 300-stall park-and-ride north of the Bel-Red/130th light rail station. That project is expected to begin in mid-2021.

Funding for some of these key mobility projects comes from a low-interest federal loan that allows the city to keep pace with light rail construction and new development in the area.

Improvements to 120th Avenue Northeast, from Northeast 12th Street to Northeast 16th Street (future street) were completed in 2018. The city, Sound Transit and King County are now coordinating on the design to realign and widen the roadway from Northeast 16th Street to Northup Way where Sound Transit's Operations and Maintenance Facility – East is being built.

Another effort to accommodate future growth is the refinement of standards for the smaller side streets in BelRed, which will be built out in the future by private developers.

The 2009 BelRed Subarea Plan calls for a substantial departure from the area's light industrial past with significant investments in transportation, parks, and environmental improvements. To learn more about the transformation, go to BellevueWA.gov/belredtransformation.



124th Avenue NE improvements between Bel-Red Road and Northup Way continue on schedule.



Multipurpose path on the north side of NE Spring Boulevard (facing east).



BELRED TRANSFORMATION



See description of projects on the next two pages.

BELRED TRANSFORMATION



MAP #	PROJECT LIMITS	STATUS	IMPROVEMENTS	CONTACT
120th Avenue NE CORRIDOR				
1a	NE 16th Street (future) to Northrup Way	Design underway	<ul style="list-style-type: none"> • Realign and widen roadway • Sidewalks • Bike lane • Street lighting 	Jun An Bellevue Transportation 425-452-4230 jan@bellevuewa.gov
124th Avenue NE CORRIDOR				
2b	Ichigo Way to Northrup Way	<p>Construction 2022/2023.</p> <p>Separate project within segment: Replace two Seattle City Light lattice electrical towers with mono-tube towers. Construction fall 2020</p>	<ul style="list-style-type: none"> • Roadway widening to 5 lanes • Reprofilng roadway • Multiuse path between NE 16th Street and Ichigo Way for pedestrians and bicyclists, with landscaped buffer • New sidewalk with landscape planters • New fish and wildlife passage culvert • Retaining walls • Street lighting • Road restoration (paving) 	Marina Arakelyan Bellevue Transportation 425-452-4632 marakelyan@bellevuewa.gov
2c	NE Spring Blvd to Ichigo Way	Under construction through fall 2020. Portion of 124th Ave NE closed through June 2020 for bridge construction.	<ul style="list-style-type: none"> • Roadway widening to 5 lanes • Bridge for light rail undercrossing • Retaining walls • Traffic signal • Sidewalk with planters • Street lighting • Road restoration (paving) 	Marina Arakelyan Bellevue Transportation 425-452-4632 marakelyan@bellevuewa.gov
2d	NE 12th Street to NE Spring Blvd	Design underway. Construction winter 2021-2022.	<ul style="list-style-type: none"> • Roadway widening to 5 lanes • Pathway for pedestrian and bicyclists, separated from roadway by landscaping buffer • Street lights • Signal modifications • Road restoration (paving) 	Marina Arakelyan Bellevue Transportation 425-452-4632 marakelyan@bellevuewa.gov
2e	NE 8th Street to NE 12th Street	Construction fall-winter 2020.	<ul style="list-style-type: none"> • Mid-block flashing beacon crossing at NE 10th Place • Accessible curb ramps • Street lighting • Road restoration (paving) 	Daniel Lam Bellevue Transportation 425-452-2063 dlam@bellevuewa.gov

Continued on next page



BELRED TRANSFORMATION

MAP #	PROJECT LIMITS	STATUS	IMPROVEMENTS	CONTACT
130th Avenue NE CORRIDOR				
3f	Bel-Red Road to NE 20th Street	Design is underway. Construction begins 2021.	<ul style="list-style-type: none"> Protected bike lanes Sidewalks and mid-block crossings Added on-street parking Signal and intersection modifications Street lighting Landscaping and irrigation Drainage and utility improvements 	Greg Lucas Bellevue Transportation 425-452-4550 glucas@bellevuewa.gov
NE Spring Boulevard CORRIDOR				
4g	116th Ave NE to 120th Ave NE	Construction substantially complete. Road opens to public late 2020.	<ul style="list-style-type: none"> 4 lane roadway with turn pockets Multipurpose path for pedestrians and bicyclists Two bridges for light rail undercrossing 	Steve Costa Bellevue Transportation 425-452-2845 scosta@bellevuewa.gov
4h	120th Ave NE to 124th Ave NE	Construction underway. Road opens to public late 2020.	<ul style="list-style-type: none"> 4 lane roadway with turn pockets Sidewalks Off-street bike path On-street parking 	Steve Costa Bellevue Transportation 425-452-2845 scosta@bellevuewa.gov
4i	124th Ave NE to 130th Ave NE	Not funded.	<ul style="list-style-type: none"> 2-lane roadway extension Sidewalks Off-street bike path 	Mike Mattar Bellevue Transportation 425-452-4318 mmattar@bellevuewa.gov
4j	130th Ave NE to 132nd Ave NE	Design underway Construction begins late 2020 through late 2021.	<ul style="list-style-type: none"> 2- lane roadway extension Sidewalks Buffered bike lanes Traffic signal Street lighting 	Greg Lucas Bellevue Transportation 425-452-4550 glucas@bellevuewa.gov
4k	NE Spring Blvd from 132nd Ave NE to approximately 137th Place NE and from 136th Place NE to Northeast 20th Street	Construction through 2020. Light rail service begins 2023.	<ul style="list-style-type: none"> Light rail trackway Roadway improvements Sidewalks Bike lanes 	Elizabeth Guevara Sound Transit/East Link 206-689-4743 elizabeth.guevara@soundtransit.org

BELRED TRANSFORMATION



BelRed Transit Oriented Development

Transforming the BelRed area into a collection of vibrant, transit oriented neighborhoods requires significant development. This includes new market rate and affordable housing units, office and retail space, community-serving amenities, public space and infrastructure. While much of this development will come through investment from the private sector, the City of Bellevue and Sound Transit are also working to catalyze the city's ambitious transit oriented development vision.

Spring District/120th Station Transit Oriented Development

Status: Request for Proposals

In partnership with the City of Bellevue, Sound Transit recently issued a request for proposals to redevelop 6.88 acres of surplus publicly owned property adjacent to the new Link Operations and Maintenance Facility-East. Located across the street from the future Spring District/120th Station, the project is anticipated to deliver more than 1.1 million square feet of mixed-use development. This will include market-rate and affordable housing, office and retail space, public space, amenities and supporting infrastructure.

BelRed/130th Station Transit Oriented Development

Status: In Planning

Sound Transit and the City of Bellevue also are conducting planning and feasibility work for the redevelopment of more than 3.6 acres of publicly owned property adjacent to the future BelRed/130th Station. Located along Spring Boulevard, between 130th Avenue NE and 132nd Avenue NE, the project will incorporate a 300-stall park and ride facility into a larger development. The project will help fulfill the vision of a vibrant, diverse and walkable neighborhood with a mix of market-rate and affordable housing, retail and public space.



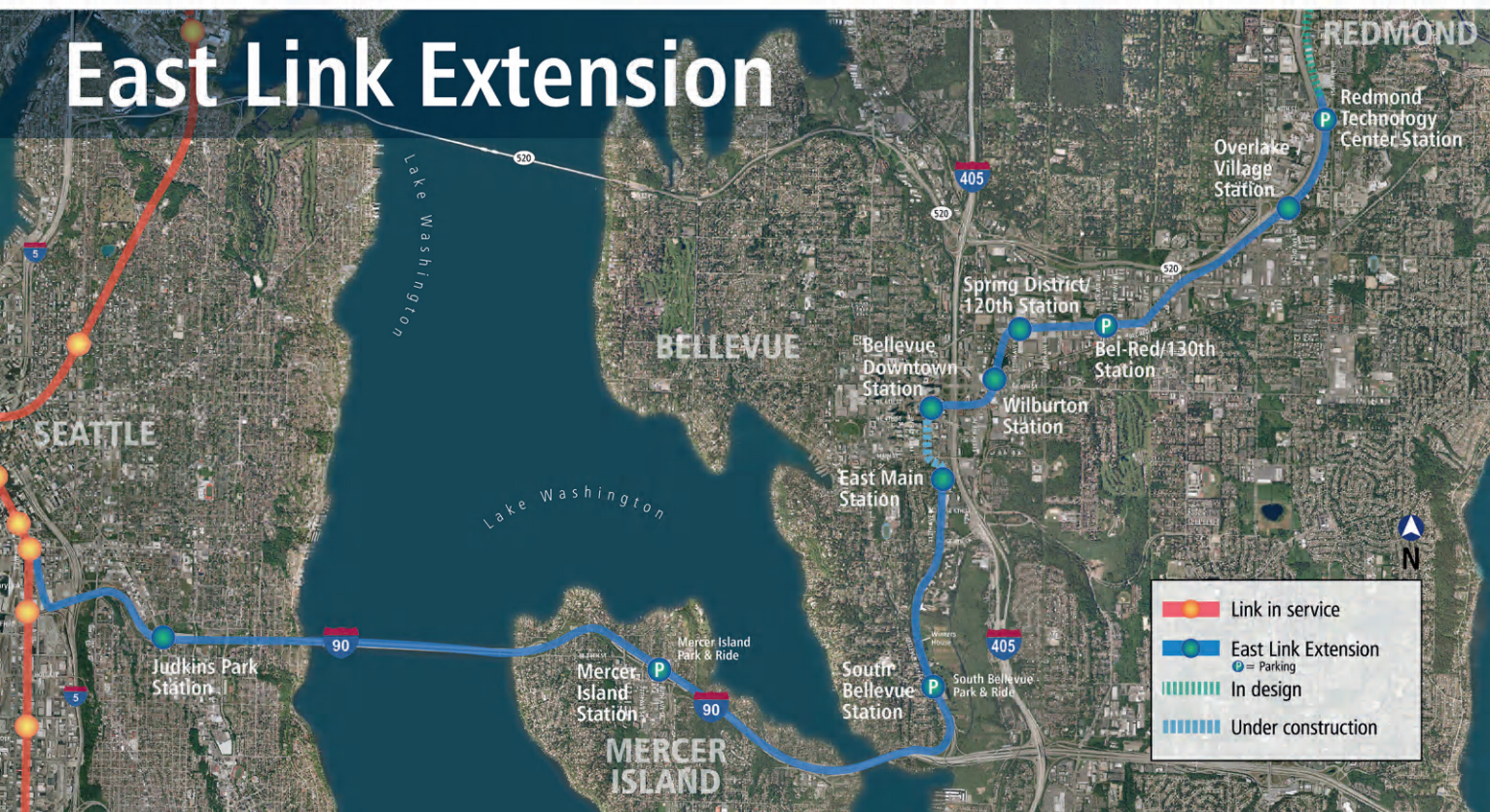


EAST LINK CONSTRUCTION

In 2023, light rail becomes a transportation option available to those who live, work and visit in Bellevue. Daily ridership is projected to reach 43,000 to 52,000 riders by 2026. Below are some East Link quick facts. Visit [SoundTransit.org/EastLink](https://www.soundtransit.org/EastLink) to learn more.

East Link quick facts

- East Link is a 14-mile extension of Sound Transit's existing Link light rail system.
- East Link extends from the International District/Chinatown Station to Judkins Park, across I-90 to Mercer Island and South Bellevue, and through downtown Bellevue and the BelRed area to the Redmond Technology Station.
- Approximately five miles of trackway are being built in Bellevue.
- Six out of the 10 stations are being built in Bellevue.
- Electric trains will run approximately every 6 minutes during peak hours.
- One train car holds approximately 200 passengers.



EAST LINK CONSTRUCTION



Light rail construction milestones

By the end of 2019:

- Overall construction of the East Link light rail project had reached 70 percent.
- Aerial guideway construction throughout the entire alignment was 100 percent complete.

By the end of 2020:

- Permanent traffic configuration along Bellevue Way SE by the South Bellevue Station and 112th Ave SE north of the “Y” at Bellevue Way SE will be in place.
- Permanent traffic configuration along NE Spring Boulevard, 136th Place NE and at the intersection of 136th Place NE and NE 20th Street will be in place.

By the end of 2022:

- Station construction will be complete.
- Testing of the trains and electrical and communications systems will be complete.

By mid-2023:

- The East Link Extension begins service and passengers will be able to ride almost 40 miles of fast, reliable light rail, from the Eastside to downtown Seattle and Northgate and to Sea-Tac Airport and Angle Lake.



Current construction (April 2020)



EAST LINK CONSTRUCTION

South Bellevue Segment

- **General area:** Interstate 90 East Channel Bridge to SE 4th Street on 112th Ave SE
- **Station:** South Bellevue, 2654 Bellevue Way SE
- **Associated features:** South Bellevue Park-and-Ride with 1,500 parking stalls and public art
- **Substantial completion*** is expected by fall 2020
- **Additional improvements:** A new building and expanded parking area will be opened in 2021 near the Winters House providing park restrooms, U-pick blueberry and seasonal farm-fresh produce sales. These improvements will be connected to 700 linear feet of new boardwalk trail.



South Bellevue Station rendering



Schematic of expanded parking area by Winters House, new restrooms and produce retail area.



Atop the guideway at the South Bellevue light rail station (March 2020)

*For purposes of this publication, **substantial completion** means construction is sufficiently complete according to contract documents and that occupancy of the building or a portion of the building is permissible. Construction schedules are subject to change and often do.

EAST LINK CONSTRUCTION



Central Bellevue Segment

- **General area:** SE 4th Street on 112th Ave SE to 124th Ave NE
- **Stations:** East Main, Bellevue Downtown, Wilburton and Spring District/120th
- **Substantial completion*** is expected by mid-2021



Image: Sound Transit

East Main Station rendering

East Main Station

Address: 229 112th Ave SE

Features: Drop off/pick up area on east side of 112th Ave NE; future 2-acre park located north of station and south of Main Street

Travel: Approximately 17 minutes to International District/Chinatown Station in Seattle



Image: Sound Transit

Bellevue Downtown Station rendering

Bellevue Downtown Station

Addresses: 594 110th Ave NE (west entrance); 597 112th Ave NE (east entrance); adjacent to Bellevue City Hall

Features: Two entrances from 110th Ave NE and 112th Ave NE

Travel: Approximately 20 minutes to International District/Chinatown Station in Seattle



Current construction of Bellevue Downtown Station (April 2020)



EAST LINK CONSTRUCTION

Central Bellevue Segment continued



Image: Sound Transit

Wilburton Station rendering

Wilburton Station

Address: 855 118th Ave NE

Features: South entrance at NE 8th Street and a north entrance connecting to 116th Ave NE via a new pedestrian walkway

Travel: Approximately 21 minutes to International District/Chinatown Station in Seattle

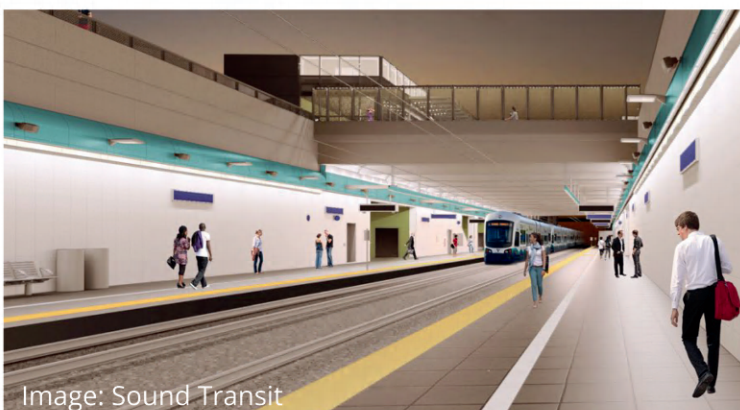


Image: Sound Transit

Spring District / 120th Station rendering

Spring District / 120th Station

Address: 12164 NE Spring Blvd

Features: Below-grade station with two side platforms

Travel: Approximately 23 minutes to International District/Chinatown Station in Seattle



Photo: Sound Transit

Spring District/120th Station under construction (April 2020)

EAST LINK CONSTRUCTION



Tunnel

- **General location:** South portal located at 112th Ave SE/Main Street (by the East Main Station). North portal located at 110th Ave NE/NE 6th Street (at the Bellevue Downtown Station.) Tunnel is underneath 110th Ave NE.
- **Length:** 2,000 feet in length (or approximately 1/3 mile)
- **Height:** 27 feet, 10 inches
- **Width:** 34 feet (total width for north- and south-bound sides)
- **Depth:** 30 to 60 feet below the surface



Photo: Sound Transit

Light rail tunnel in downtown Bellevue



Photo: Sound Transit

Tunnel near Bellevue Downtown Station



Photo: Sound Transit



EAST LINK CONSTRUCTION

North Bellevue Segment (BelRed)

- **General location:** 124th Ave NE to intersection of NE 20th St and 136th Ave NE
- **Station:** Bel-Red/130th Station, 13102 NE Spring Blvd
- **Associated features:** At-grade station with two platforms. Park-and-ride lot with 300 stalls located along side the station on the north side
- **Substantial completion*** is expected by summer 2020.



Image: Sound Transit

BelRed / 130th Station rendering



Spring District / 120th Station rendering

EAST LINK CONSTRUCTION



Operations and Maintenance Facility-East

- **Address:** 1907 120th Ave NE
- **Associated features:** Facility needed to store, clean maintain 96 train cars. Transit Oriented Development is planned on the site (See page 11). A connection from King County's Eastrail to 120th Avenue NE will be on the north side of the facility.
- **Substantial completion*** is expected by late 2020.



Image: Sound Transit

Rendering of the Operations and Maintenance Facility East located in BelRed



Image: Sound Transit



EAST LINK CONSTRUCTION

Upcoming light rail construction activities

This map and the list on the next page indicate key light rail construction activities anticipated this year and slightly beyond. Work descriptions are listed by areas, or segments, within Bellevue city limits. Because construction schedules often change, dates listed below are approximate. Current year (2020) seasons are reflected in the listing below unless otherwise noted.



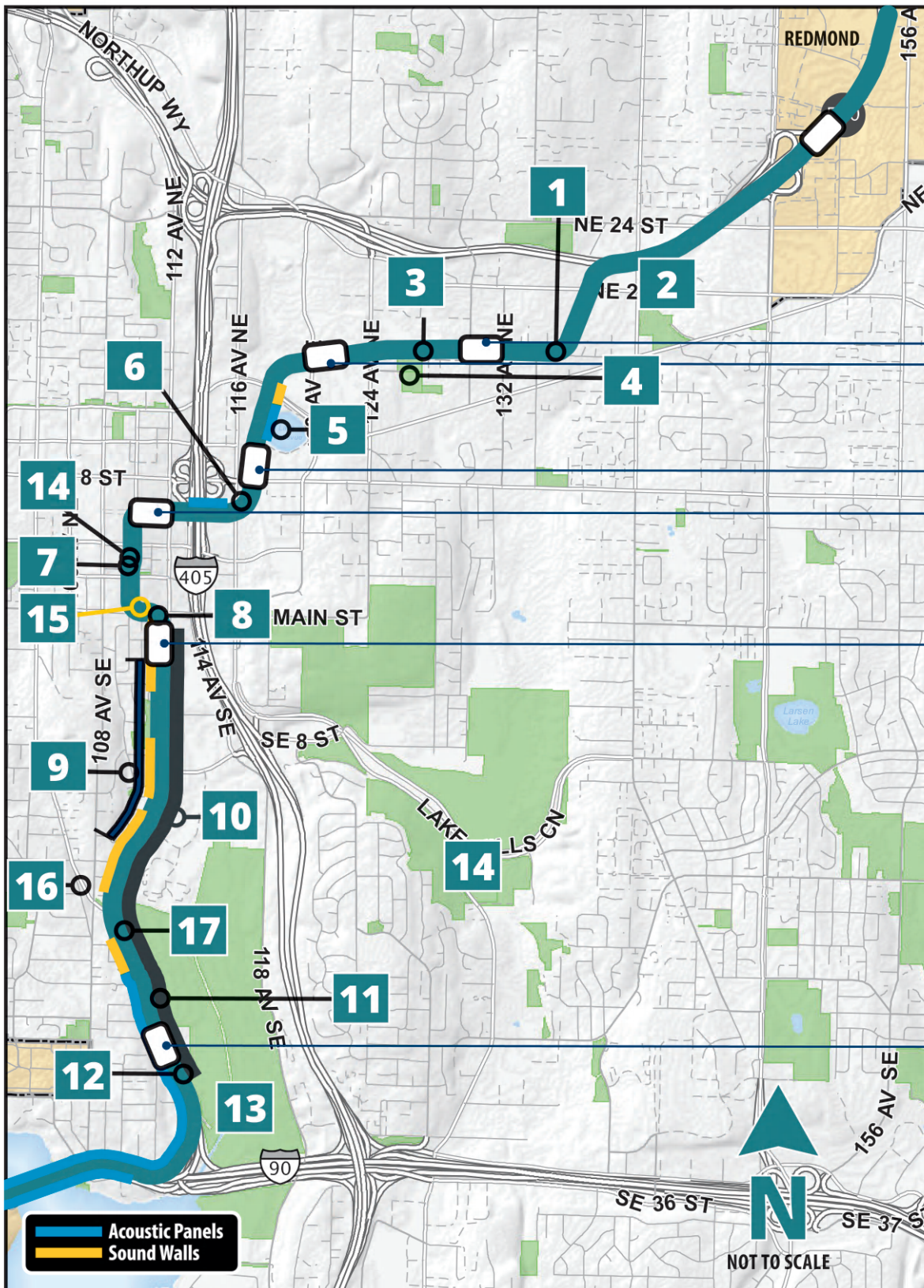
EAST LINK CONSTRUCTION



MAP# Work description/location	
South Bellevue Segment	
1	South Bellevue Park-and-Ride remains closed while new station and parking garage construction continues.
2	Bellevue Way SE traffic control allowing two lanes open for peak traffic in morning and evening commute hours remains through summer.
3	Left turn from Bellevue Way SE to 112th Ave NE restored during the summer. (SE 30th Street to Bellevue Way SE is permanently a "right turn only.")
4	Bellevue Way SE roadway restoration from I-90 to the "Y" at 112th Ave SE and completion of multipurpose path along Bellevue Way SE at 112th Ave SE from I-90 to Main Street are anticipated to be finished during the summer. There will be lane closures on Bellevue Way during weekdays and 3-5 full weekend closures of Bellevue Way.
5	Winters House and Blueberry Farm retail building closed during construction. New farm stand and boardwalk to be built in 2021.
6	Trench and rail line construction along 112th Ave SE continues through fall.
7	112th Ave SE road-over-rail segment completion anticipated in summer. Weekend full road closures needed to complete work.
8	Traffic signal at SE 15th Street at 112th Ave SE planned for installation in summer.
9	Sound wall construction along 112th Ave SE by Surrey Downs neighborhood expected to be complete during the summer.
10	Emergency gate installation at SE 4th Street/112th Ave SE complete this summer. (SE 4th Street permanently closed for non-emergency vehicles and pedestrians. Emergency access only.)
Central Bellevue Segment	
11	112th Ave SE, south of Main Street, occasional lane closures continue through 2021.
12	New traffic signal to be installed at 300 block of 112th Ave SE in summer.
13	Temporary sound wall installed to mitigate tunnel construction noise to be removed by summer.
14	Tunnel's center wall construction and track installation continues.
15	110th Ave NE southbound between NE 3rd Place and NE 2nd Place closed for mid-tunnel access shaft construction through summer/fall 2021.
16	Bellevue City Hall plaza area anticipated to open in late summer 2020.
17	110th Ave NE between City Hall and NE 6th Street: traffic will be one-lane each direction through spring.
18	Lane closures on NE 6th Street as construction of Bellevue Downtown Station continues through summer.
19	New sidewalk installed along 112th Avenue NE between NE 4th and NE 6th streets in summer.
20	New landscaped median to be built on NE 8th Street. To complete the work and pave roadway, expect night closures in late spring.
21	Multipurpose path by Wilburton Station to open summer 2020.
North Bellevue Segment	
22	Operations and Maintenance Facility – East construction anticipated to be complete by late fall.
23	Nightly full closures along NE Spring Blvd and along 136th Place NE for paving in spring.
24	New traffic signals installed and activated at NE Spring Blvd/132nd Ave NE and at NE Spring Blvd/136th Place by summer.



EAST LINK MITIGATION



Stations

- BelRed/130th
- Spring District/120th
- Wilburton
- Bellevue Downtown
- East Main
- South Bellevue

EAST LINK MITIGATION



MAP#	MITIGATION	DESCRIPTION OF PROJECT	✓
1	Signature Tree Planting	Evergreen trees (Fall-Winter 2020)	
2	Kelsey Tributary	establish wetland mitigation offsite at Coal Creek	✓
3	Goff Creek	install future culvert to daylight stream	✓
4	West Tributary	create wetlands	✓
5	Lake Bellevue	wetland preservation; wildlife protection; stormwater management	✓
6	Sturtevant Creek	realignment and restoration	✓
7	Mid Tunnel Access	enhanced landscape for screening; pocket park restoration (2023)	
8	New Main Street Park	created from loss of park land in Surrey Downs Park; enhanced tree planting (Spring 2021)	
9	Light Rail Land Use Code	limits adjacency between single-family residential use from light rail use	✓
10	Multi-purpose Path	connects East Main Station to South Bellevue Station (Summer 2020)	
11	Mercer Slough Blueberry Farm	new retail building and parking (2021)	
12	Signature Tree Planting	Sequoia tree near South Bellevue Station (Fall 2020)	
13	Mercer Slough Park	wetland enhancement, tree planting and mitigation planting (Fall 2020)	
14	Tunnel Excavation Method	underground rather than open cut in roadway	✓
15	Temporary Construction Sound Walls	located at south tunnel portal	✓
16	Neighborhood Traffic Mitigation	pilot turn restrictions at SE 16th Street/108th Avenue NE	✓
17	Winters House	preservation, protection	

INDICATES COMPLETED



RESOURCES

NEIGHBORHOOD RESOURCES

Work with the city to address neighborhood traffic concerns.

425-452-6856
bellevuentss@bellevuewa.gov
BellevueWA.gov/ntss

Get connected through the Neighborhood Outreach Office.

425-452-6836
neighborhoodoutreach@bellevuewa.gov
BellevueWA.gov/community-development
- select *Neighborhoods*

Get help from the Conflict Resolution Center in working out issues with a neighbor.

425-452-4091
bcrcc@bellevuewa.gov

Find maps and GIS data for zoning, projects and more.

BellevueWA.gov
- search *Map Gallery*

Submit a service request, report a concern or view a map

MyBellevue app

Contact the Service First Desk at City Hall.

425-452-6800
servicefirst@bellevuewa.gov
BellevueWA.gov/contact-us



Image: Sound Transit

Rendering of Winter's House



Photo: Tim Rice

Aerial photo of Bellevue

RESOURCES



BUSINESS RESOURCES

Contact the City's Cultural and Economic Development Division:

425-452-4114 | BellevueWA.gov/business | cevo@bellevuewa.gov

Talk to a small business advisor:

SCORE (business mentoring) | www.score.org

U.S. Small Business Administration | www.sba.gov

Refresh your business and financing plans:

Small Business Development Center | <http://wsbdc.org/bellevue>

Network with other businesses:

Bellevue Downtown Association | 425-453-1223 | www.bellevuedowntown.org

Bellevue Chamber of Commerce | 425-454-2464 | www.bellevuechamber.org

Contact Sound Transit's Business Relations Program to help your business succeed during light rail construction.

Rossana Garner | 206-689-3373 | rossana.garner@soundtransit.org

COMMUTER RESOURCES

Contact the Choose Your Way Bellevue program for commute planning assistance.

425-283-1357 | ChooseYourWayBellevue.org | @chooseurwaybell

Check transit schedules to plan your commute.

King County Metro

206-553-3000 (TTY 771) | JustOneTrip.org | KingCounty.gov/metro | @kcmetrobus

Sound Transit

888-889-6368 (TTY 771) | SoundTransit.org | @soundtransit

Download travel or transit apps on your mobile device to help you find alternate routes during road closures and know when to catch the next bus.

- WSDOT Traffic Map
- King County Trip Planner
- One Bus Away



Eastgate bus and bike lanes



RESOURCES

CONSTRUCTION INFORMATION

Bellevue Transportation Department

425-452-6856

425-452-7840 (Emergency Response Line)

trreception@bellevuewa.gov

BellevueWA.gov/trafficadvisories*

BellevueWA.gov/eastlink*

Bellevue Utilities Department

425-452-6932

425-452-7840 (Emergency Response Line)

utilities@bellevuewa.gov

BellevueWA.gov/utilities*

Bellevue Development Services Department

425-452-6800

permits@bellevuewa.gov

BellevueWA.gov/development-services

(Development activity*)

King County Roads Division

1-800-KC-ROADS

maint.roads@kingcounty.gov

KingCounty.gov/roads

@kcroads

Sound Transit/East Link project

206-398-5465

eastlink@soundtransit.org

soundtransit.org/eastlink*

1-888-298-2395 (24 Hour Construction Hotline)

@soundtransit

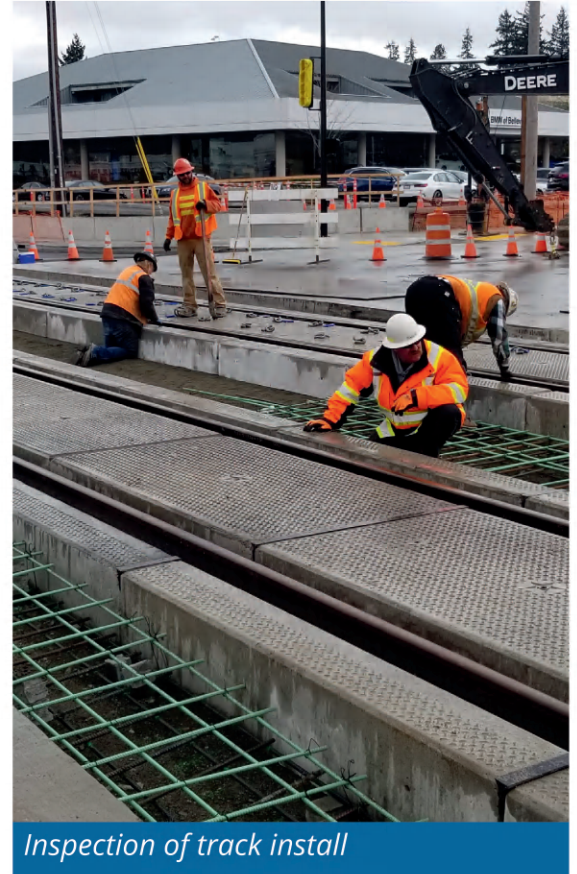
Washington State Department of Transportation

360-705-7000 (711 Relay)

WSDOT.com/projects*

@wsdot

*text/email subscription alerts available



Inspection of track install



SPECIAL MESSAGE

Construction during the coronavirus pandemic

The Coronavirus (COVID-19) pandemic has caused great uncertainty, including how construction activities are to be conducted in compliance with the Governor’s “Stay Home - Stay Healthy” order. The order defines essential businesses that could continue under the order and the essential workers who support them. City services that sustain water, wastewater, stormwater and transportation systems were deemed as essential.

Information contained in this booklet relates to publicly funded projects – not private development. Improvements to the transportation network in BelRed by the city and construction of East Link light rail by Sound Transit meet the definition of essential construction. Staff from the Transportation, Utilities and other city departments who are involved with these and other city-managed projects continue to perform critical operations, such as maintenance and inspections.

The city and its contractors are committed to ensuring safe workplace practices, especially social distancing, to protect the public and themselves.

Provisions of Gov. Inslee’s order have changed and are likely to change in the future. We strive to provide the most current information in an effort to stop the spread of the virus.

Below are resources to keep you informed about the local response efforts to the COVID-19 public health crisis.

City of Bellevue	BellevueWA.gov/COVID-19	425-452-6800
Public Health- Seattle & King County	KingCounty.gov/COVID	206-296-1608
Office of the Governor	coronavirus.wa.gov	360-902-4111
Washington State Department of Health	doh.wa.gov/coronavirus	800-525-0127
Washington State Labor & Industries	lni.wa.gov	360-902-5800

City social media worth following:



Twitter

@BellevueWA
@BvueTrans
@BvuePD



Facebook

@BellevueWashington



Instagram

cityofbellevuewa



YouTube



Nextdoor



City of Bellevue
Transportation Department
PO Box 90012
Bellevue, WA 98009-9012

PRSR STD
U.S. Postage
PAID
Bellevue, WA
Permit No. 61

ECRWSS
Postal Patron

Access ●●● ●●● Bellevue

Keeping Bellevue moving forward

