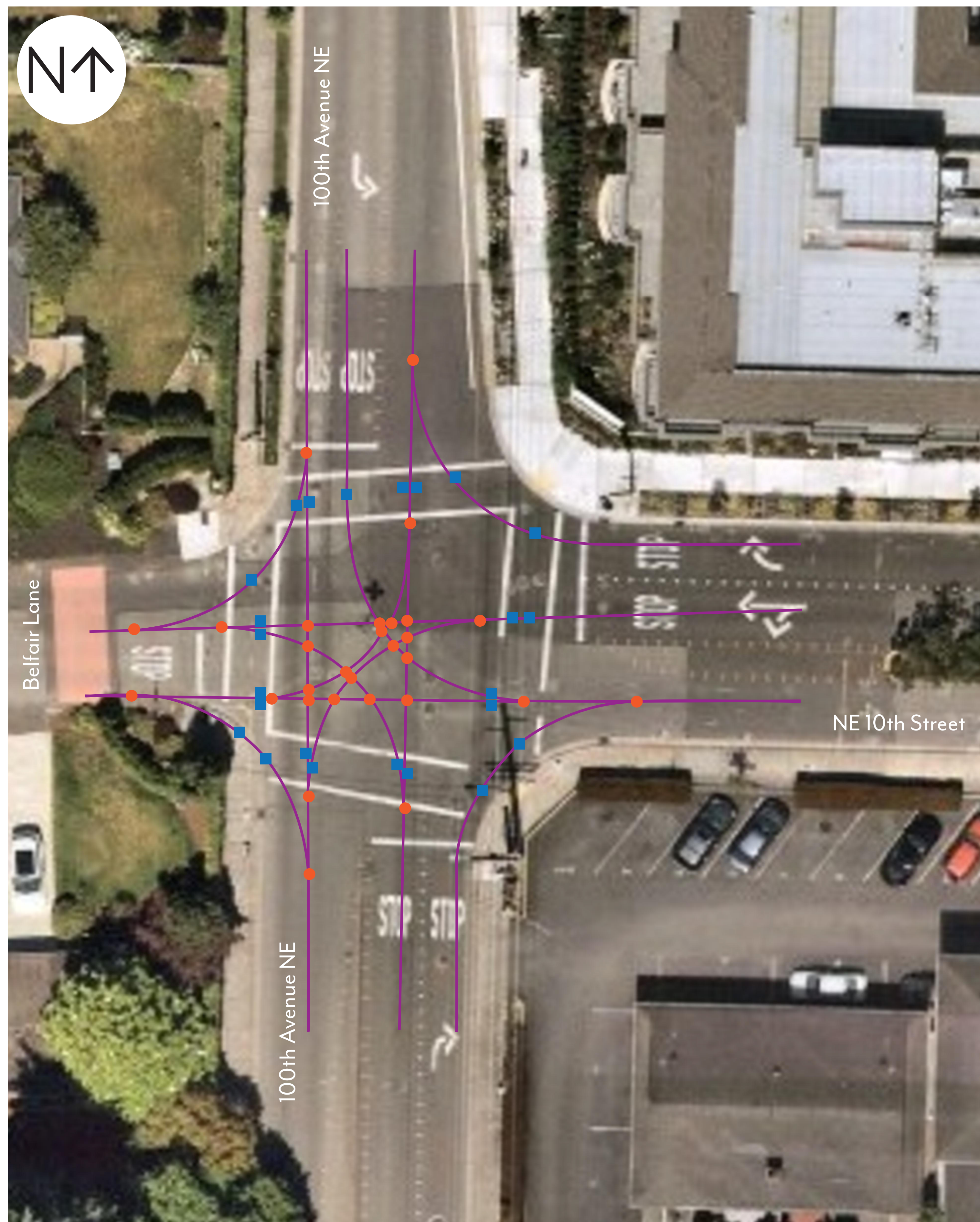


Potential Conflict Points Diagram

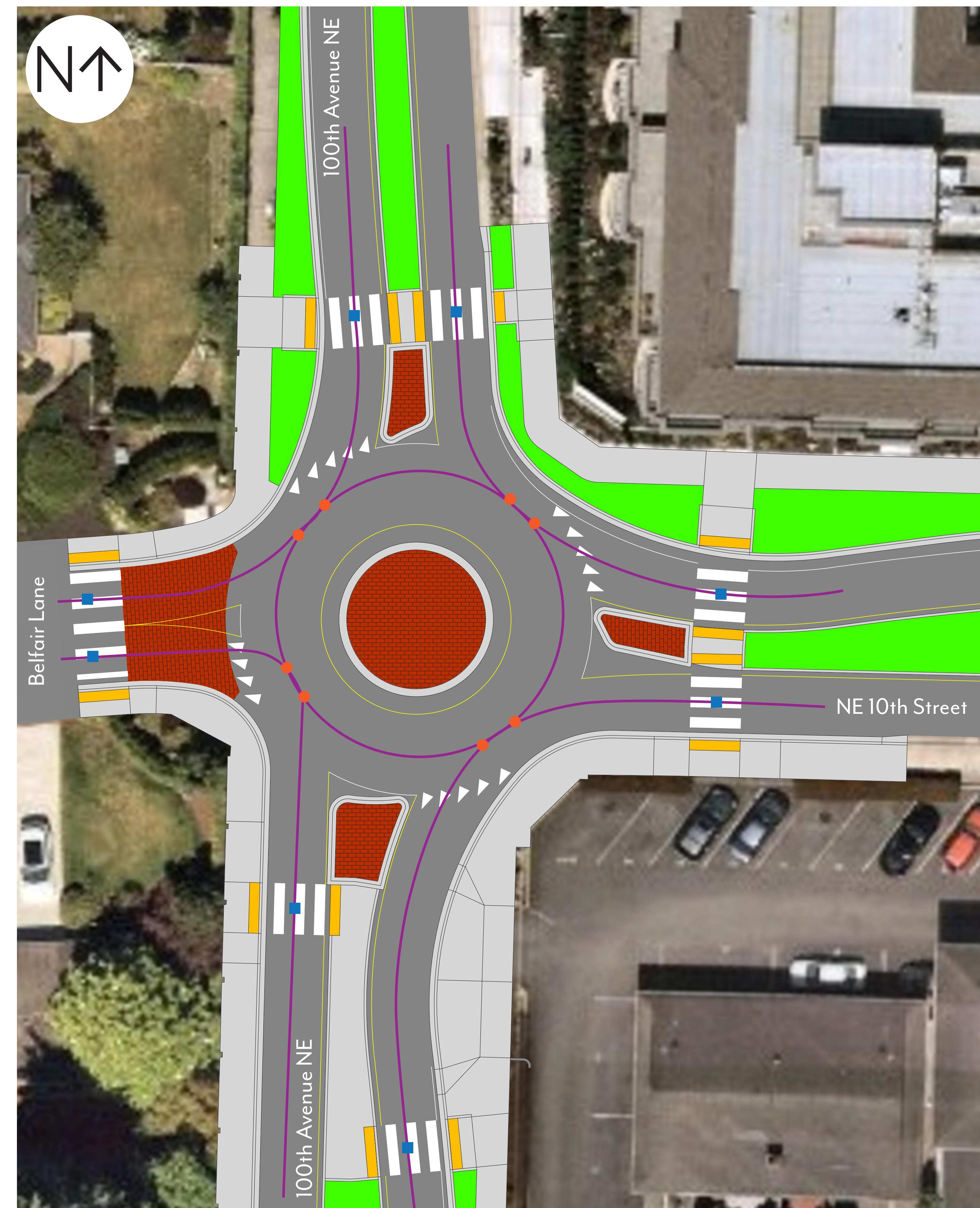
100th Avenue NE and NE 10th Street Roundabout | City of Bellevue | October 2019

Existing All-Way Stop



- Vehicle-to-Vehicle potential conflict points | 29
- Vehicle-to-Pedestrian potential conflict points | 24

Proposed Mini-Roundabout



- Vehicle-to-Vehicle potential conflict points | 8
- Vehicle-to-Pedestrian potential conflict points | 8