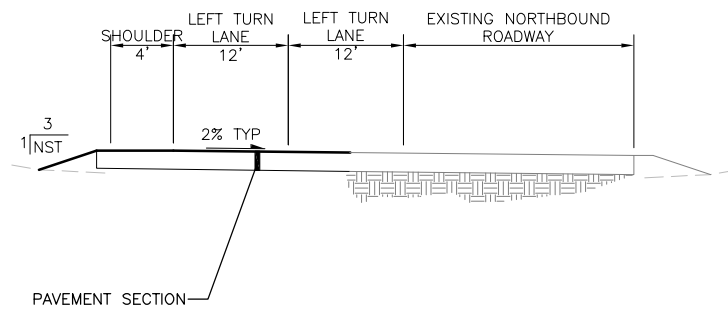
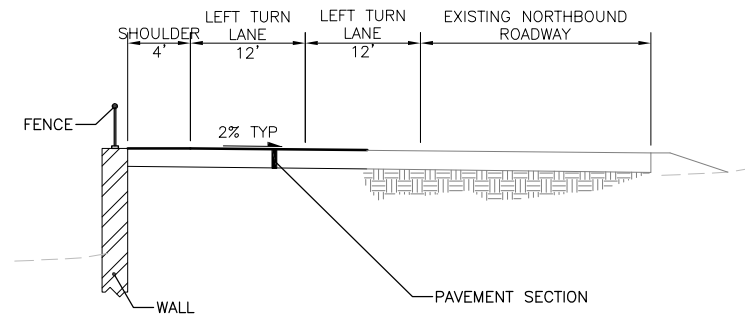


06/11/2019 12:20pm H:\255\18\003 Bellevue TO 2 LHCE 8th Lakemont Forest\Drafting\Design - CAD 2018\SA1 - 10% PLANS\LHC-SE 8TH TS\251802-SEC1 SA1 - LHC TS.dwg



SECTION A - LAKE HILLS CONNECTOR (NORTHBOUND ROADWAY)
NOT TO SCALE



SECTION A - LAKE HILLS CONNECTOR (NORTHBOUND ROADWAY) ALTERNATE EDGE
NOT TO SCALE

GENERAL NOTES:

1. SIDEWALKS SHALL BE SLOPED TOWARDS ROADWAY, AND CROSS SLOPES SHALL NOT EXCEED 1.5% UNLESS OTHERWISE NOTED ON PLANS.

NST = NO STEEPER THAN



Know what's below.
Call before you dig.

10% SUBMITTAL

NO.	DATE	BY	APPR.	REVISIONS

Approved By	
TRANSPORTATION DESIGN MANAGER	DATE
PROJECT MANAGER	DATE

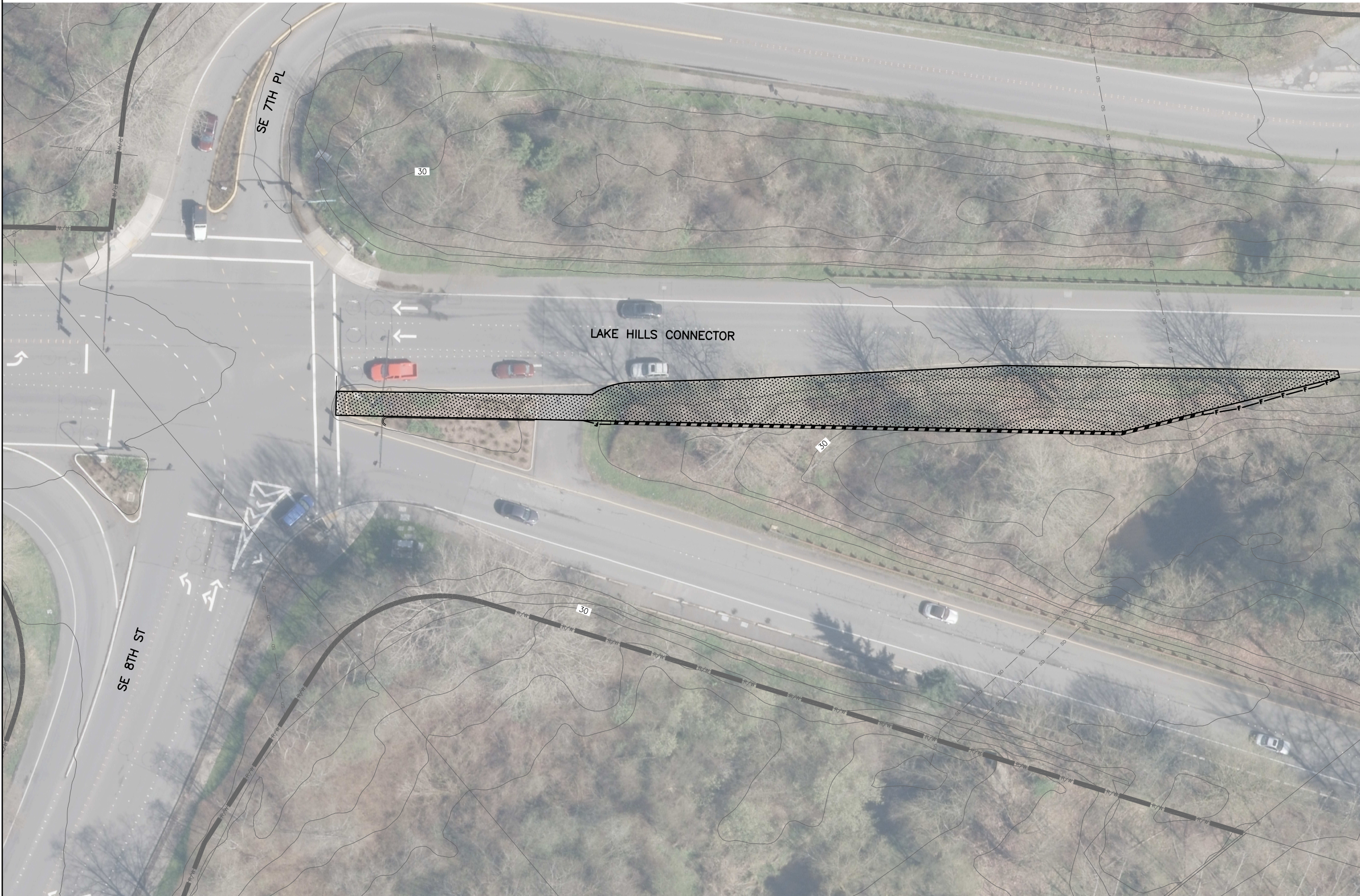
CRS DESIGNED BY JUNE 2019 DATE
WRM DRAWN BY JUNE 2019 DATE
CJE CHECKED BY JUNE 2019 DATE



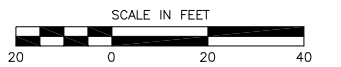
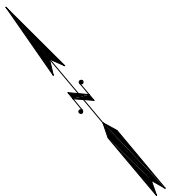
**SE 8TH ST & LAKE HILLS CONNECTOR
TRAFFIC SIGNAL IMPROVEMENTS**

TYPICAL SECTIONS	
SEC1	SHT 1 OF 3

06/11/2019 12:22pm H:\255\18\003 Bellevue TO 2 LHCE 8th Lakemont Forest\Drafting\Design - CAD 2018\SA1 - 10% PLANS\LHC-SE 8TH TS\251802-PPT_SA1 - LHC TS.dwg



- LEGEND:**
- CUT LINE
 - FILL LINE
 - ASSUMED WALL
 - NEW PAVEMENT



Know what's below.
Call before you dig.

10% SUBMITTAL

NO.	DATE	BY	APPR.	REVISIONS

Approved By	
TRANSPORTATION DESIGN MANAGER	DATE
PROJECT MANAGER	DATE

CRS DESIGNED BY **JUNE 2019** DATE
 WRM DRAWN BY **JUNE 2019** DATE
 CJE CHECKED BY **JUNE 2019** DATE

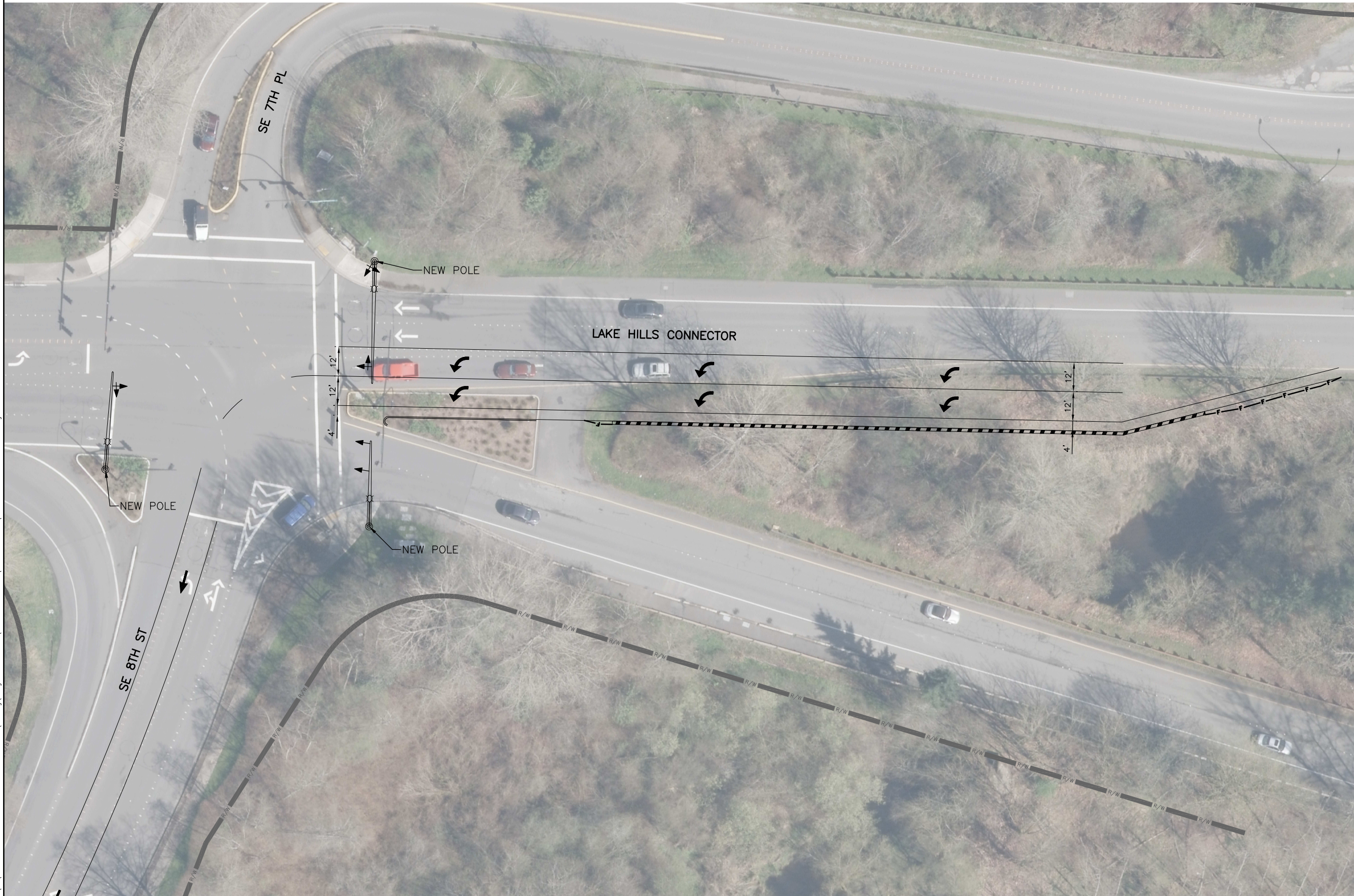



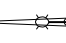

Reid Middleton
 728 134th Street SW Suite 200
 Everett, Washington 98204
 Ph: 425 741-3800

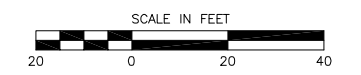
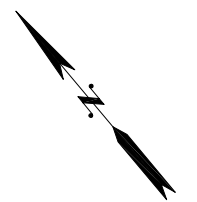
**SE 8TH ST & LAKE HILLS CONNECTOR
TRAFFIC SIGNAL IMPROVEMENTS**

ROADWAY PLAN	
PP1	SHT 2 OF 3

06/11/2019 12:25pm H:\255\18\003 Bellevue TO 2 LHCE 8th Lakemont Forest\Drafting\Design - CAD 2018\SA1 - 10% PLANS\LHC-SE 8TH TS\251802-CHI SA1 - LHC TS.dwg



- LEGEND:**
-  STREET LIGHT
 -  TRAFFIC SIGNAL POLE
 -  SIGNAL HEAD



Know what's below.
Call before you dig.

10% SUBMITTAL

NO.	DATE	BY	APPR.	REVISIONS

Approved By

TRANSPORTATION DESIGN MANAGER _____ DATE _____

PROJECT MANAGER _____ DATE _____

CRS DESIGNED BY DATE JUNE 2019

WRM DRAWN BY DATE JUNE 2019

CJE CHECKED BY DATE JUNE 2019



Reid Middleton

728 134th Street SW Suite 200
Everett, Washington 98204
Ph: 425 741-3800

**SE 8TH ST & LAKE HILLS CONNECTOR
TRAFFIC SIGNAL IMPROVEMENTS**

CHANNELIZATION PLAN

CHI SHT 3 OF 3