

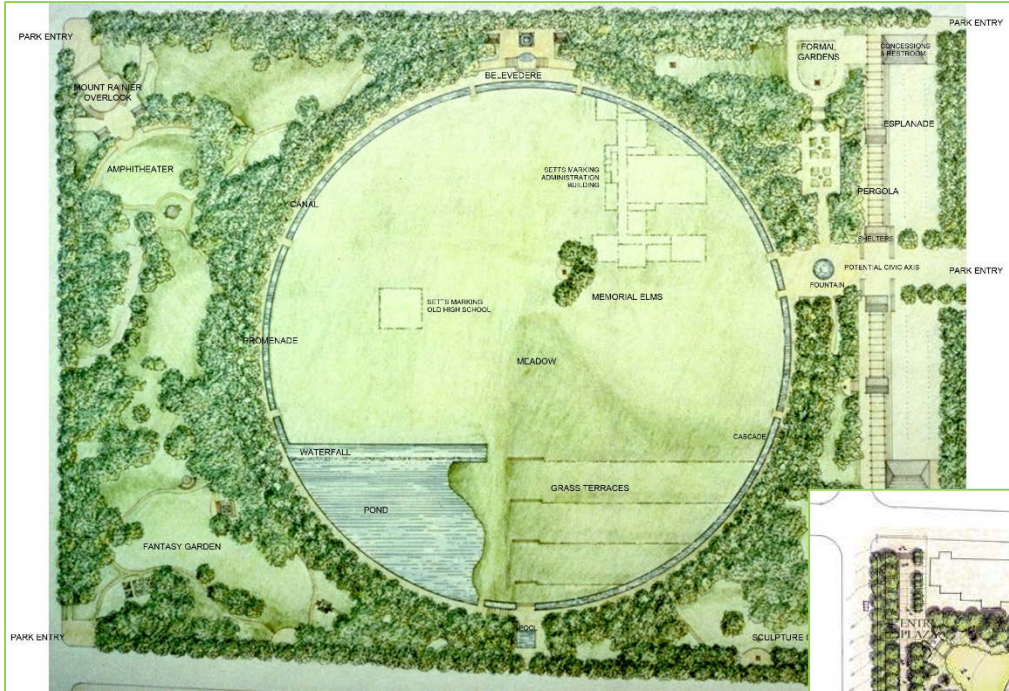
DOWNTOWN PARK

NE Gateway Update

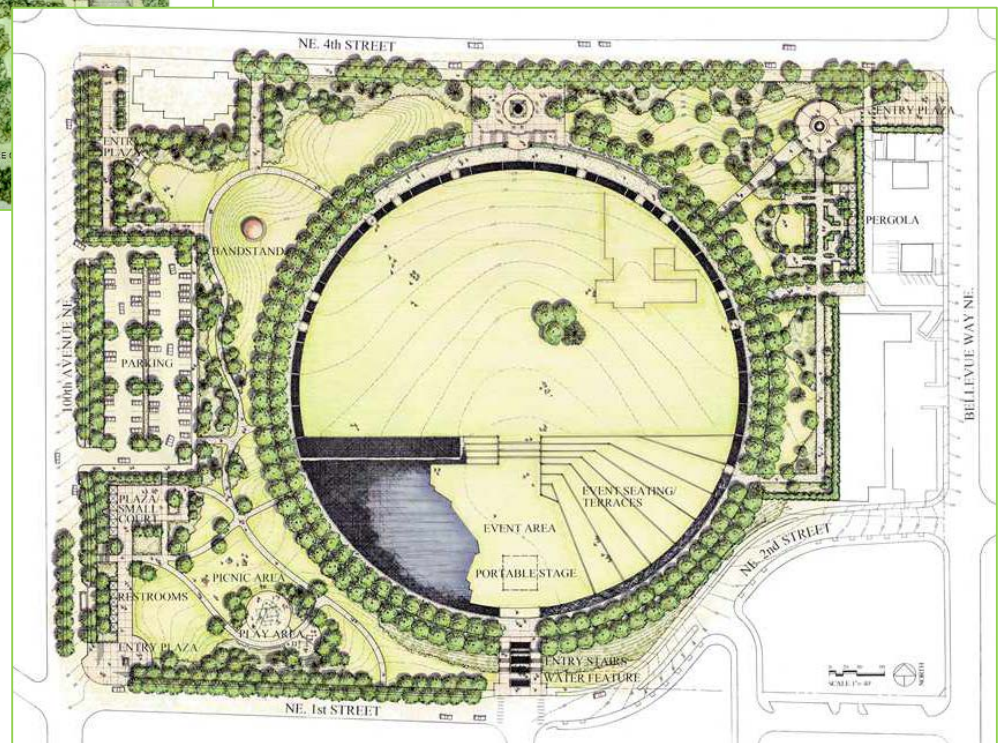
TONIGHT'S PRESENTATION

- **MASTER PLAN & UPDATE**
- **DOWNTOWN PARK TODAY**
- **PREVIOUS SITE CONCEPTS**
- **THE GRAND CONNECTION & PUBLIC ART**
- **PREFERRED SITE PLAN**
- **NEXT STEPS**
- **COMMENTS / QUESTIONS**

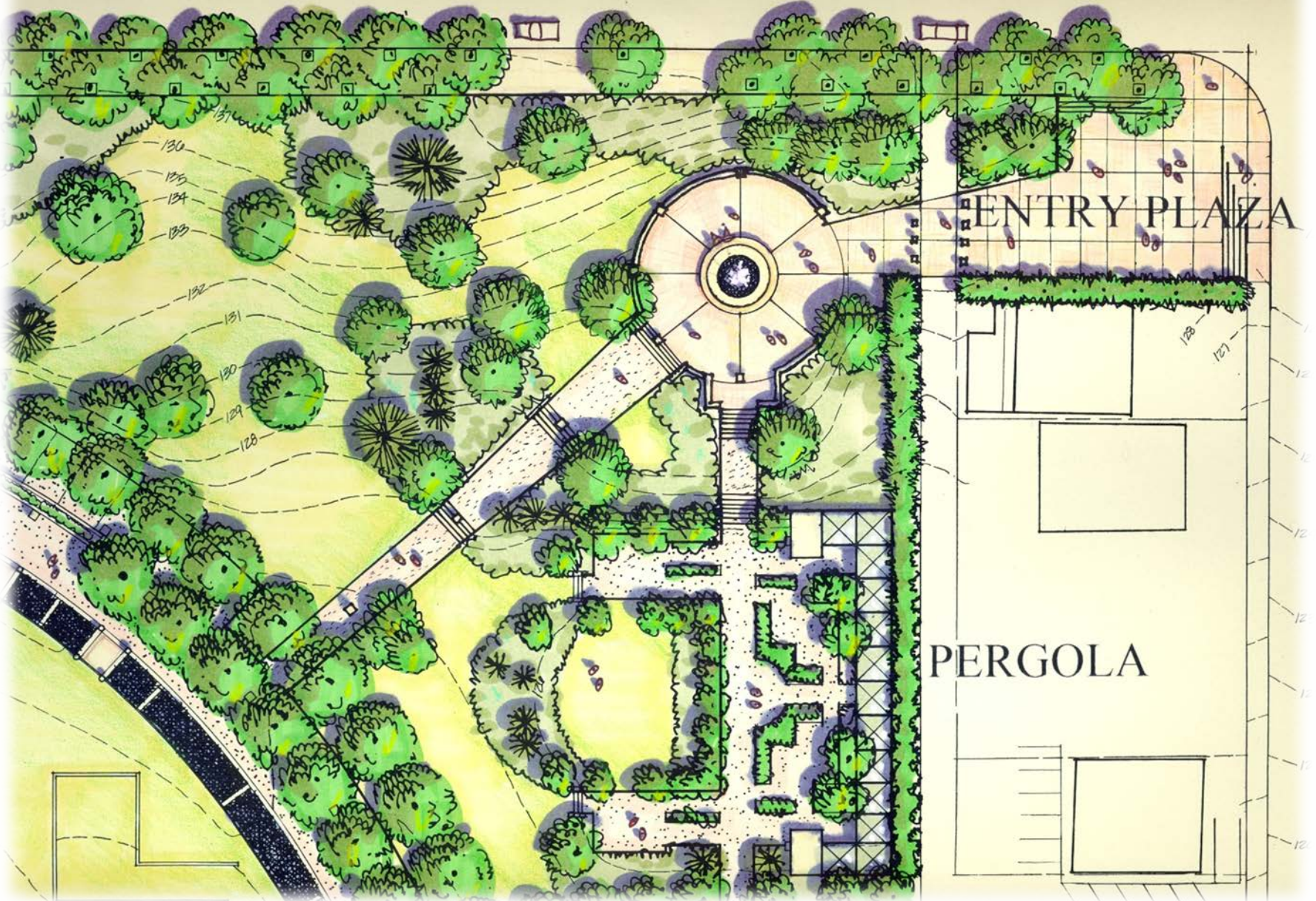




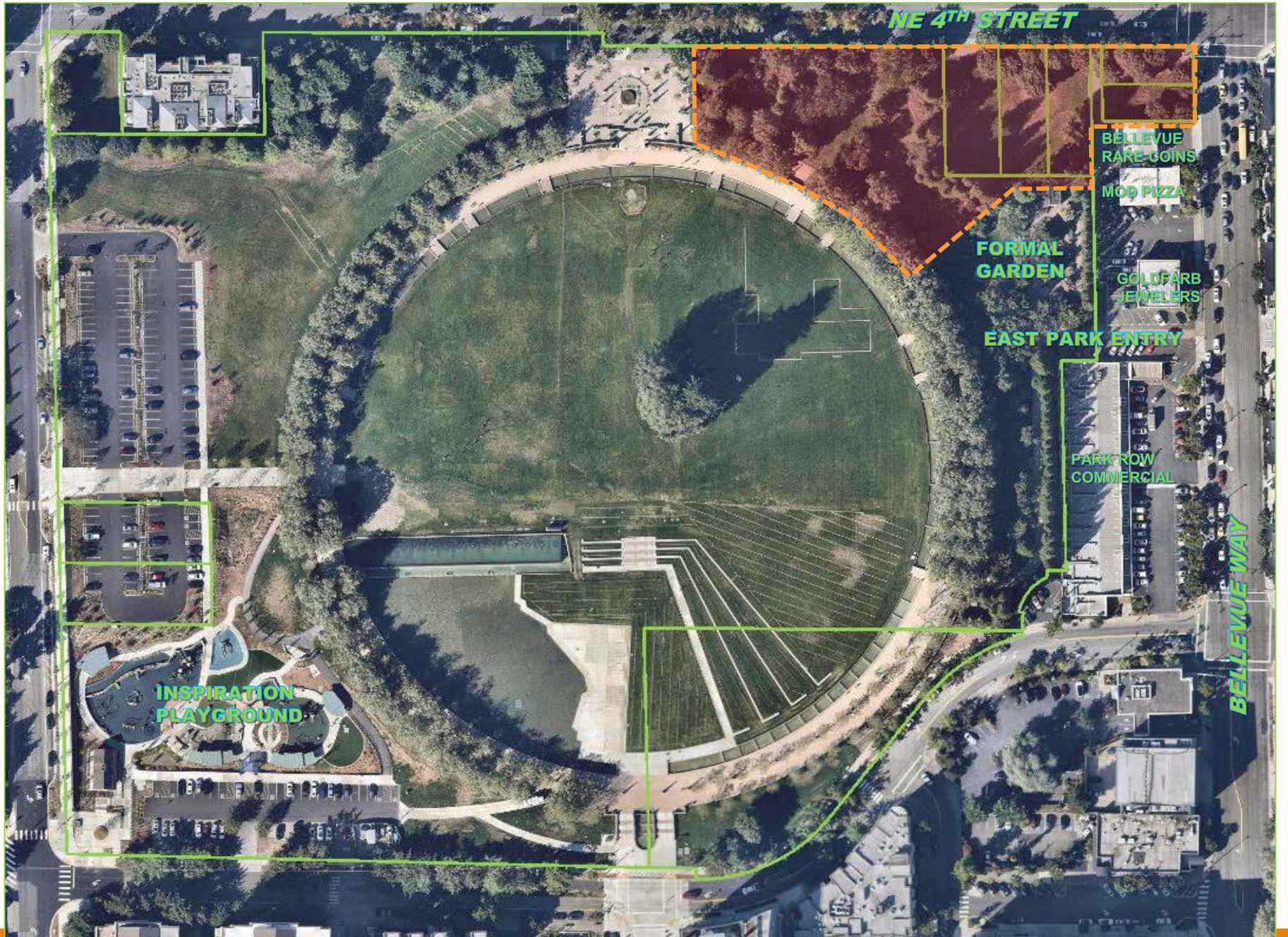
1984 DTP Master Plan



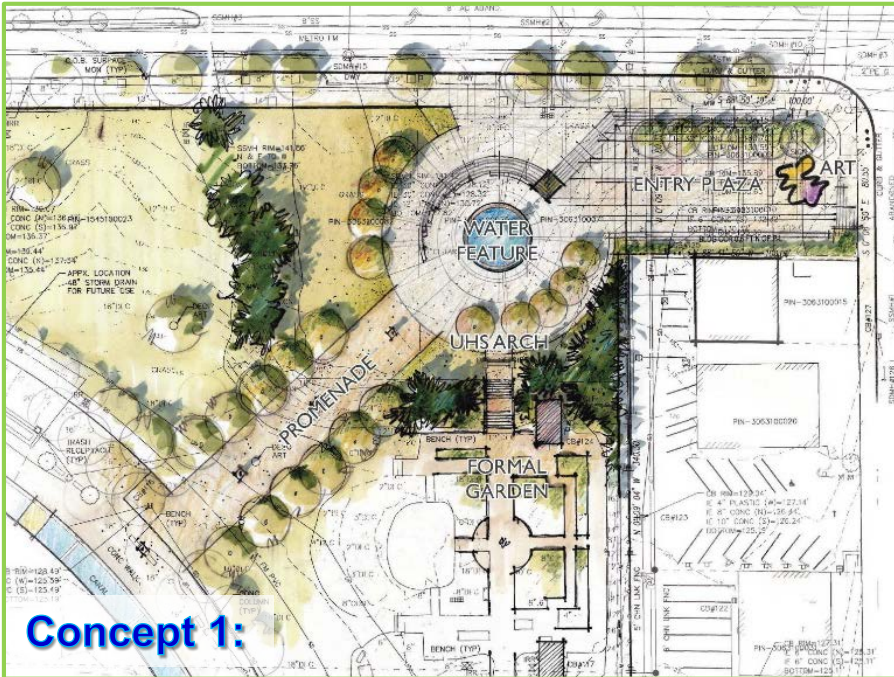
1997 DTP Master Plan Update



1997 DTP Master Plan Update – NE Corner



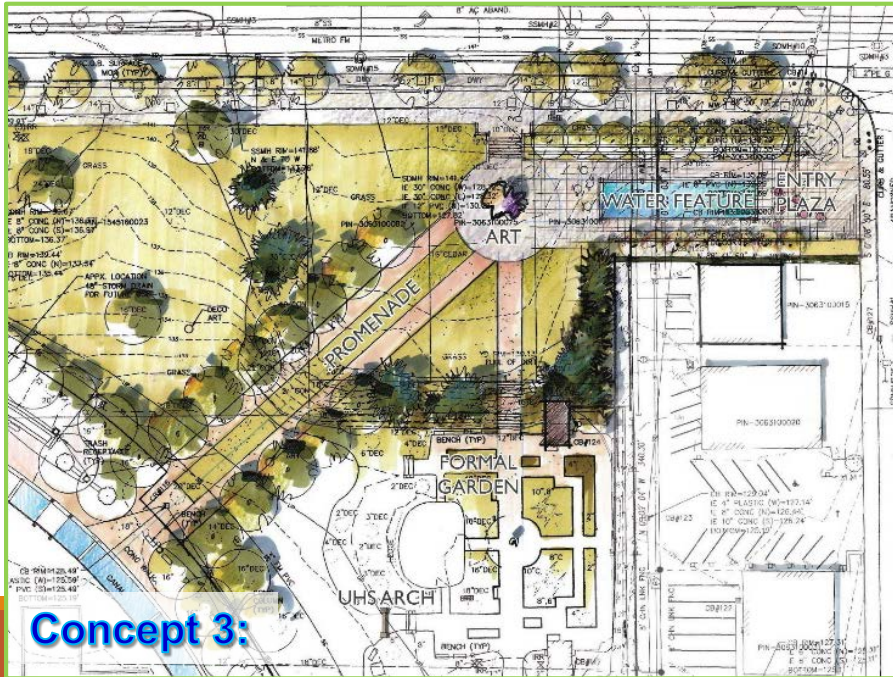
Downtown Park – Today



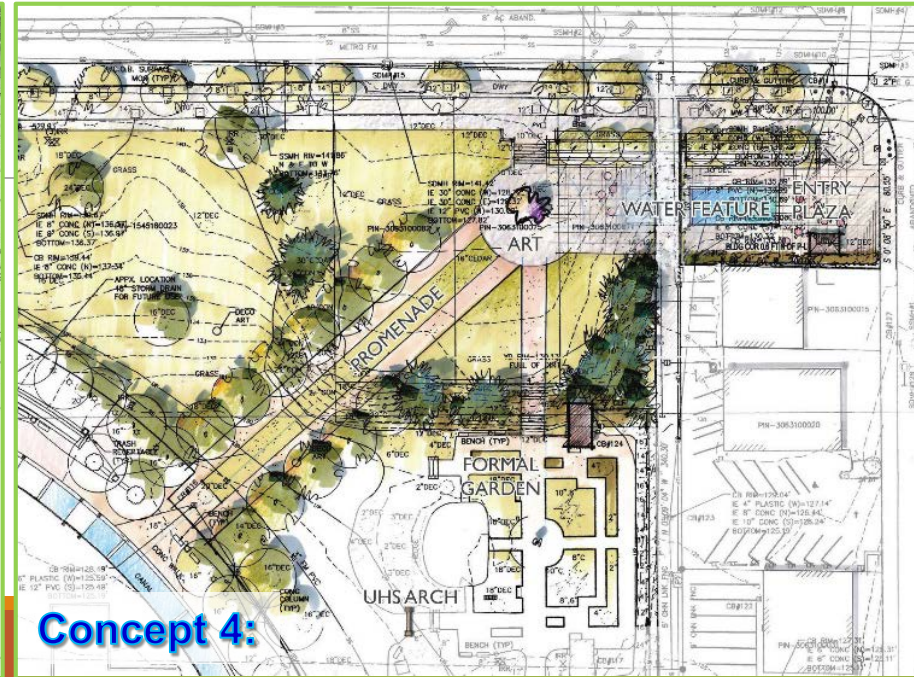
Concept 1:



Concept 2:



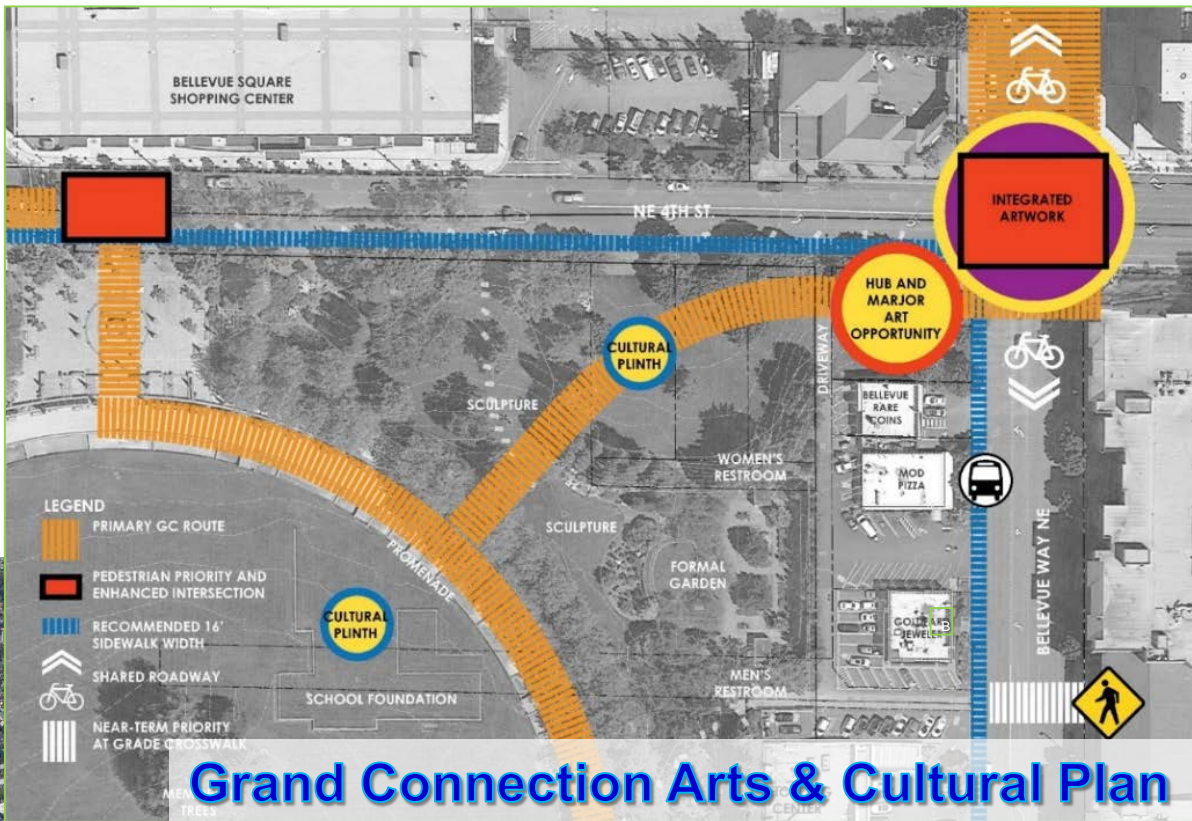
Concept 3:



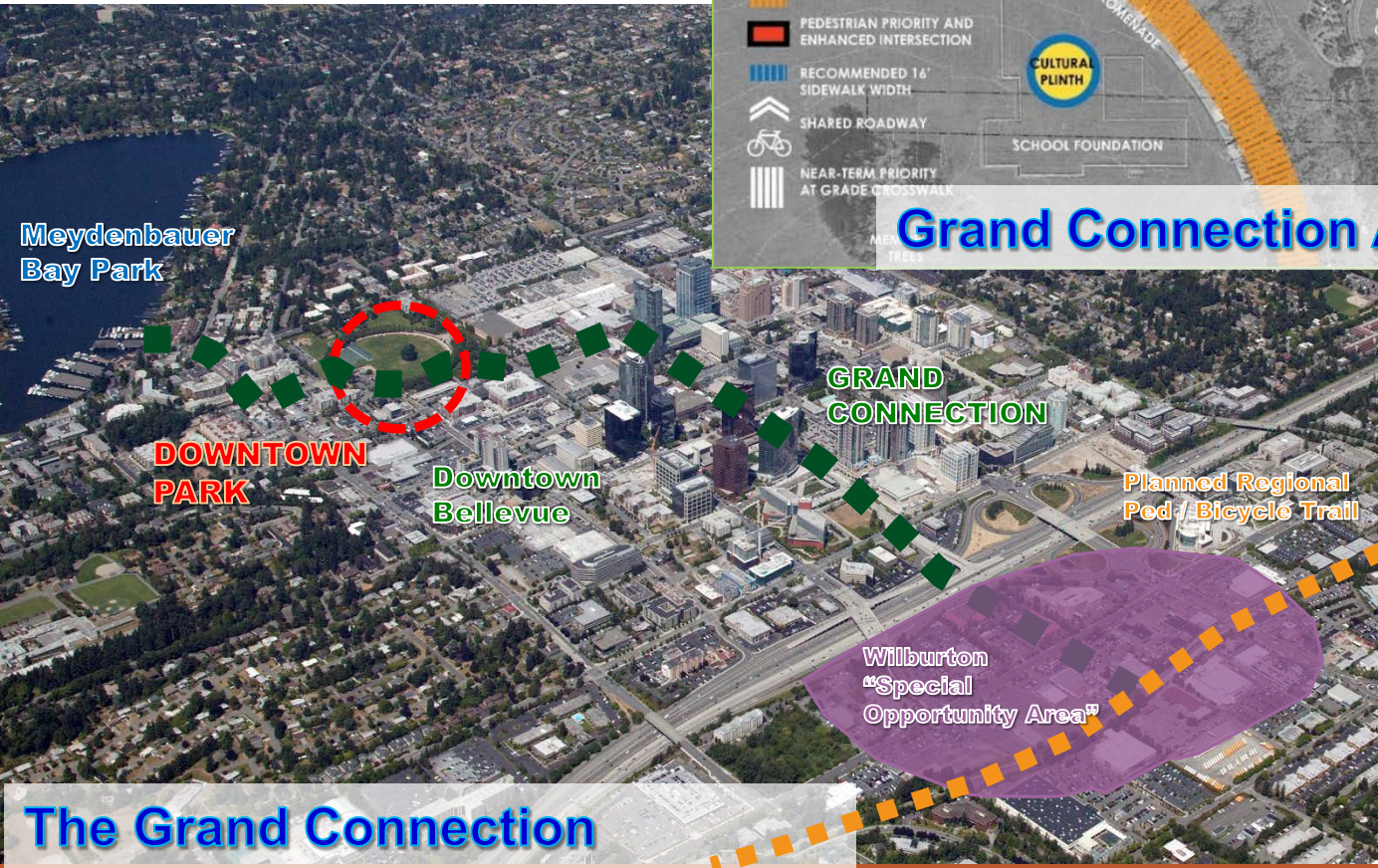
Concept 4:

Park Board Comments:

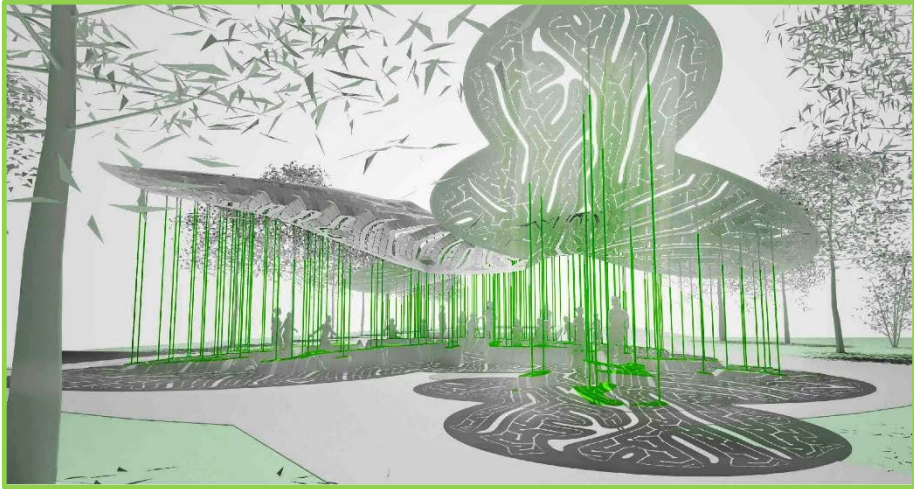
- **Opened up the Park and made more welcoming;**
- **Eliminate the alley;**
- **Should feel like a park, not a commercial plaza;**
- **The pavilion concept was not well supported;**
- **Greenery should soften, not hide the park;**
- **Use art and water feature to draw visitors in, but don't overwhelm them or overpower the entry;**
- **Most preferred the art piece at the "knuckle;"**
- **Keep the Union High arch visible, not tucked away;**
- **Be mindful of how the park looks from the nearby high-rises;**



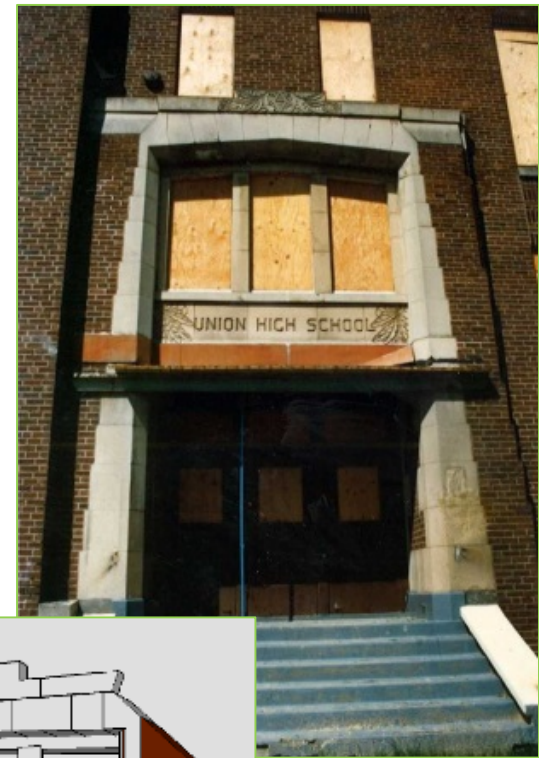
Grand Connection Arts & Cultural Plan



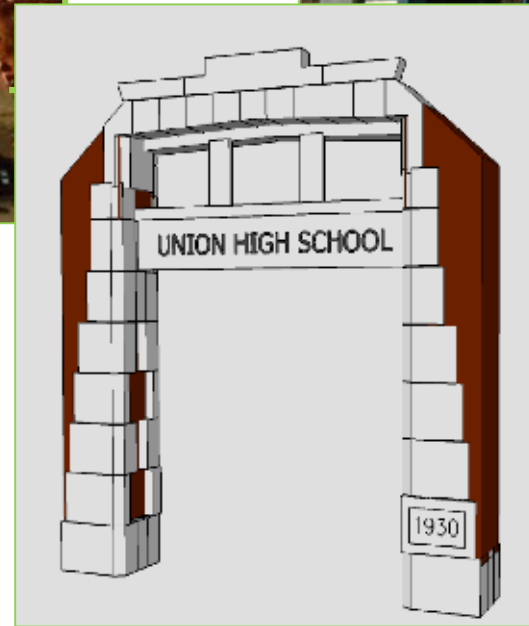
The Grand Connection



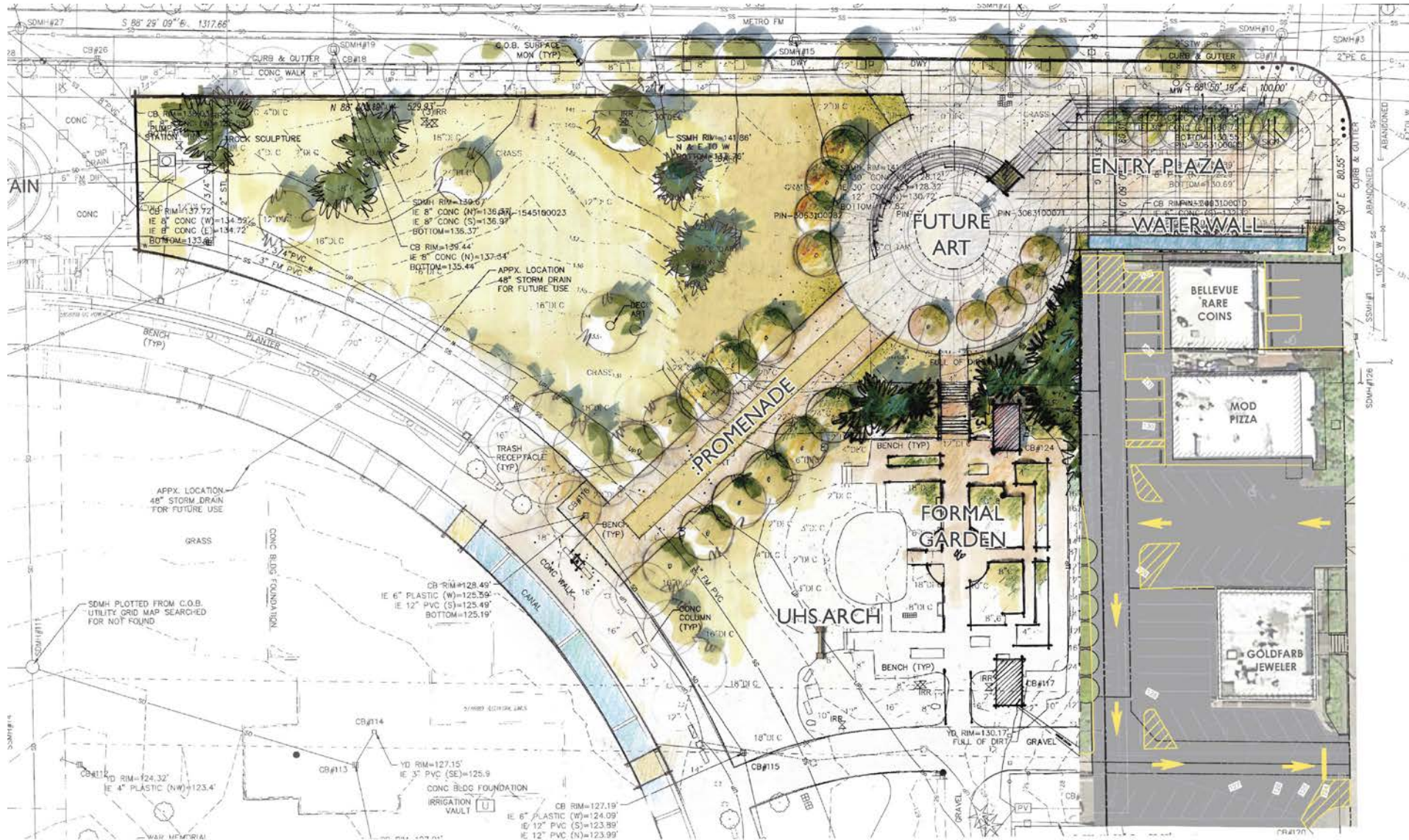
The Very Many – led by Marc Fornes



From the Collections of Eastside Heritage Center



Union High Arch Integration



DTP NE Gateway – Preferred Site Plan



Next Steps:

- Right of Way Vacation - Summer '19**
- Complete Design - thru Fall '19**
- Obtain Permits - Summer '19 thru Spring '20**
- Public Bid - Spring '20**
- Construction - Spring '20 thru Spring '21**



Comments/Questions