



## SUMMARY OF FINDINGS

Below is a summary of the data we collected near the intersection of 147th Avenue SE and SE Eastgate Drive from 6/7/2019 to 6/13/2019.

### ROADWAY CHARACTERISTICS

#### ROAD SPECIFICATIONS

147th Avenue SE and SE Eastgate Drive are residential streets approximately 36 ft wide. Vehicles can park on both sides of the street.

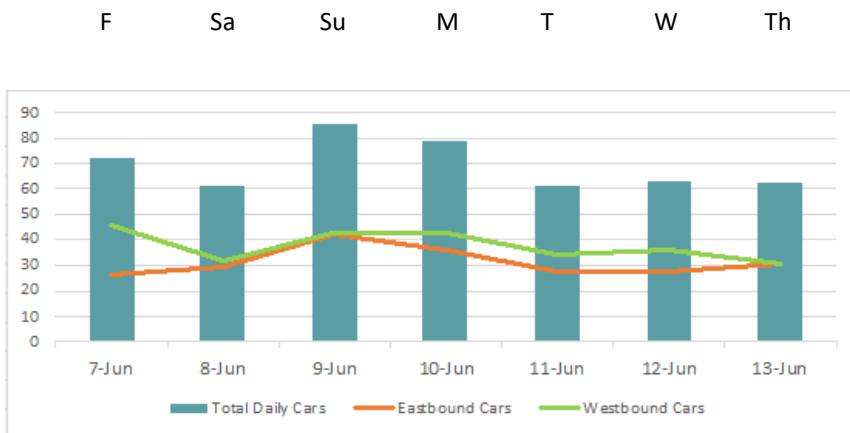
#### RESIDENTIAL STREET

147th Avenue SE and SE Eastgate Drive are residential streets in the Eastgate neighborhood of Bellevue with a speed limit of 25 mph.



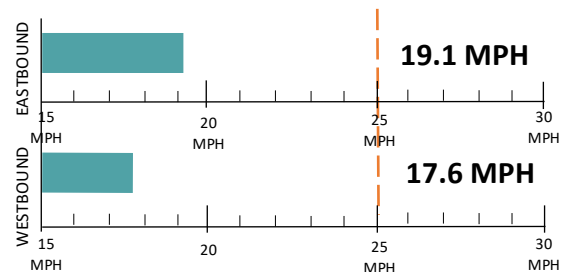
#### DAILY TRAFFIC

The Mid-Week Average on SE Eastgate Drive is 62 cars per day. Mid-Week Average includes data between Tuesday and Thursday.



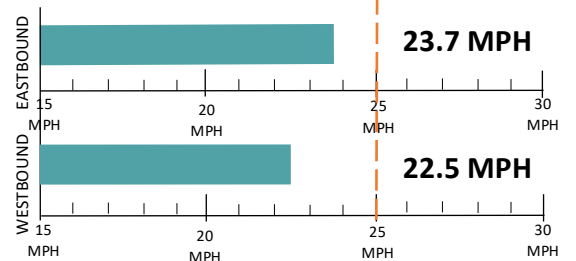
#### SPEED STUDY

##### Average Speeds



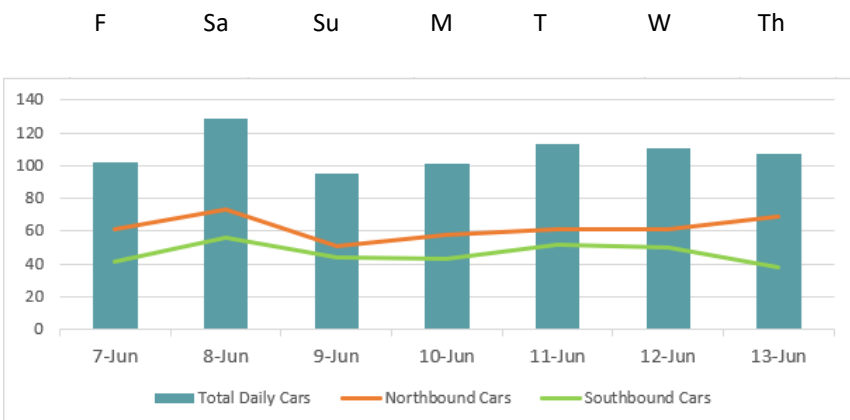
##### 85th% Speed

85% of vehicles were traveling at or below this speed.

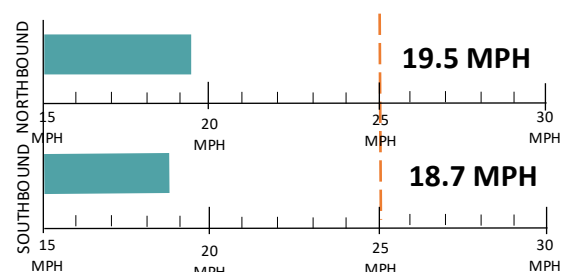


Speed Limit (25 MPH) Car Speeds on SE Eastgate Drive

The Mid-Week Average on 147th Avenue SE is 110 cars per day. Mid-Week Average includes data between Tuesday and Thursday.

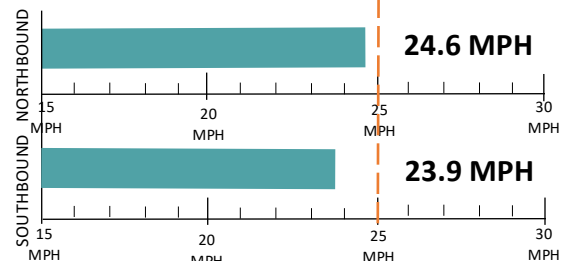


##### Average Speeds



##### 85th% Speed

85% of vehicles were traveling at or below this speed.



Speed Limit (25 MPH) Car Speeds on 147th Avenue SE



#### COLLISION HISTORY

A three-year collision study was conducted on 147th Avenue SE between SE Eastgate Drive and SE 39th Street and on SE Eastgate Drive between 147th Avenue SE and 148th Avenue SE, and there were no reported collisions.

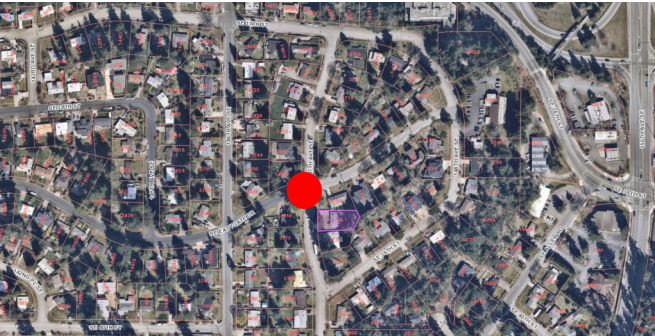




## FIELD REVIEW




Facing Northbound



Facing Southbound

KEY:

 Speed Study Location



Facing Westbound



Facing Eastbound

## RECOMMENDATIONS

Below are our recommendations for 147th Avenue SE and SE Eastgate Drive based on the field reviews, data collection, and engineering analysis. More detail on these recommendations are outlined in the **Residential Traffic Guidebook** ([Bellevuewa.gov/ResidentialTrafficGuidebook](http://Bellevuewa.gov/ResidentialTrafficGuidebook)). By educating the community and encouraging safe driving, we can begin to change driver behavior and reduce vehicle speeds.



**EDUCATE THE COMMUNITY**



**REDUCE EXCESSIVE VEHICLE SPEEDS**



**IMPROVE PEDESTRIAN AND BICYCLE SAFETY**



### TRAFFIC SAFETY YARD SIGNS



This program involves lending communities portable signs that encourage motorists to respect the neighborhood, drive responsibly, and drive 25 mph. The signs are moved by community volunteers from place to place throughout the neighborhood every few days.



### RADAR DOLLY

You can borrow and place a radar dolly on your street for up to two weeks. This unit gives motorists feedback on the speed at which they are driving on a digital reader board, encouraging them to obey the speed limit. Should you like to borrow the radar dolly, please request it by calling (425) 452-6457 or sign up on [Bellevuewa.gov/RadarDolly](http://Bellevuewa.gov/RadarDolly). Once we receive a request, City staff will contact you to make arrangements for both the drop-off and pick-up of the radar dolly at your home.

## MORE INFORMATION

Find out more about these recommendations in our **Residential Traffic Guidebook** or by visiting the Neighborhood Traffic Safety Services website.

**GUIDEBOOK:** [BellevueWA.gov/ResidentialTrafficGuidebook](http://BellevueWA.gov/ResidentialTrafficGuidebook)

**WEBSITE:** [BellevueWA.gov/NTSS](http://BellevueWA.gov/NTSS)

