



BELLEVUE
**PEDESTRIAN
& BICYCLE**
IMPLEMENTATION INITIATIVE

Citywide Bike Share Pilot Program

Franz Loewenherz

Principal Transportation Planner

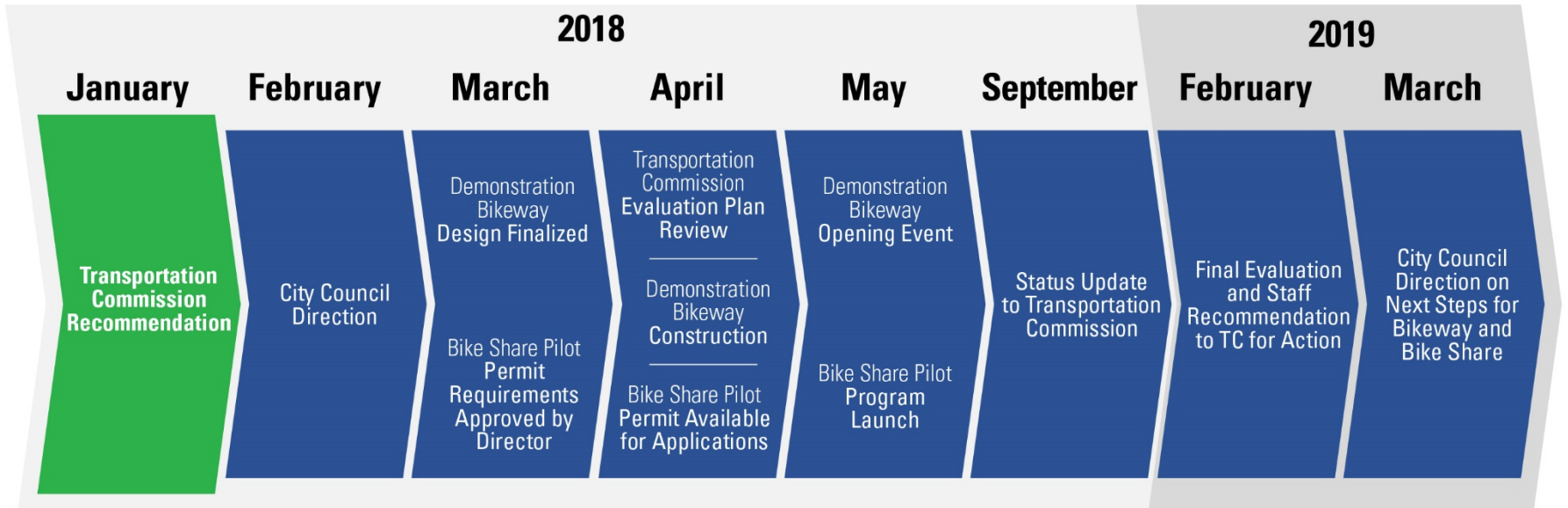
Andreas Piller

Associate Transportation Planner

Transportation Commission

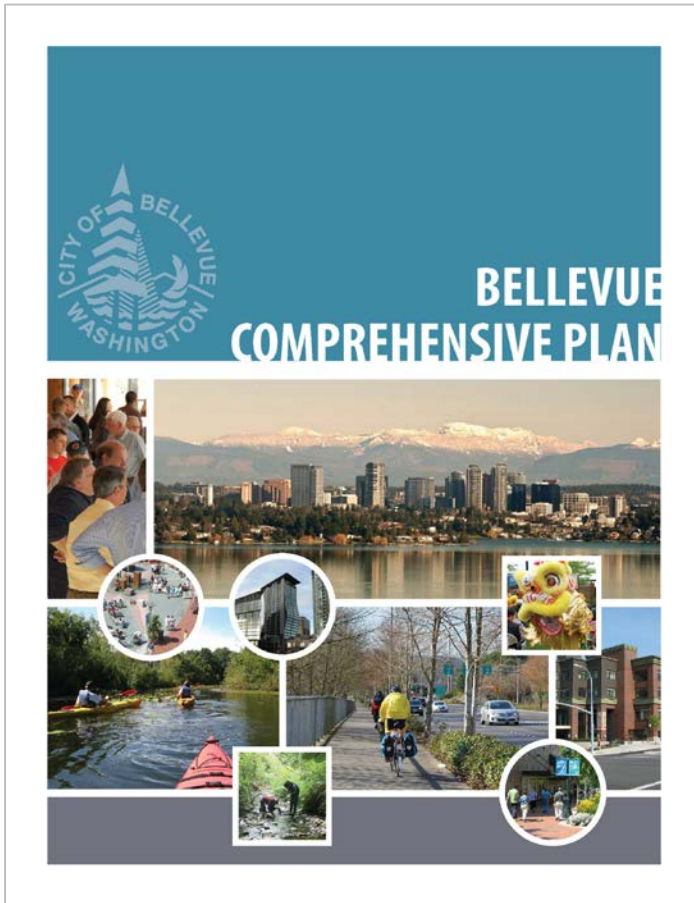
January 25, 2018

- 1. Staff seeks a Commission recommendation to the Bellevue City Council on the scope and timing of implementing a citywide bike share pilot program.**
- 2. In accordance with its Bylaws approved on 12/14/17, the Commission must also authorize a person to represent the transmittal of this and the 1/11 TC recommendation to Council.**



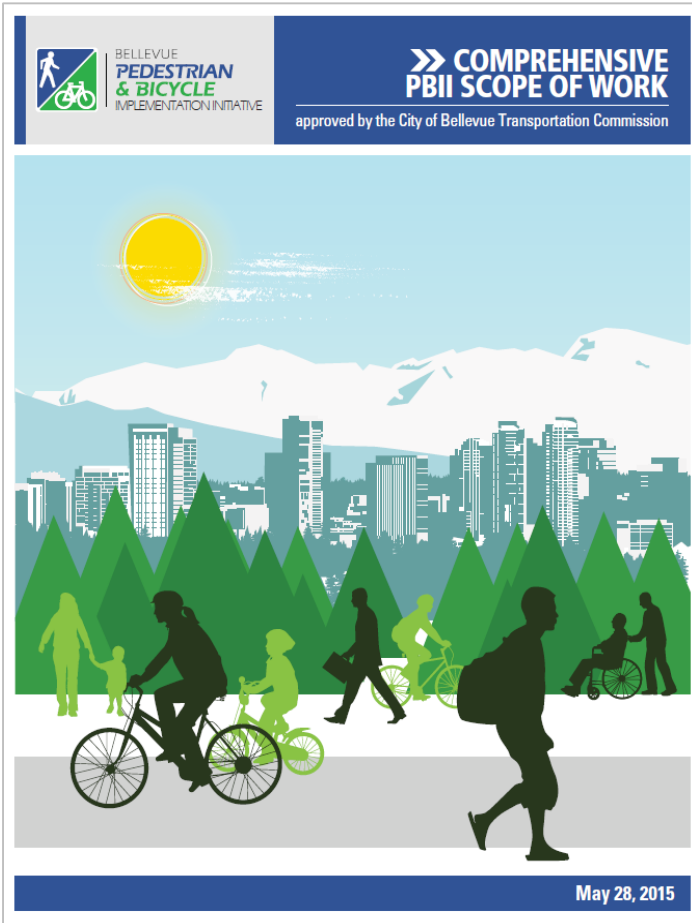
The Commission voted five in favor and two opposed in recommending that Council direct staff to proceed with implementing the downtown demonstration bikeway project.





TR-16. Evaluate and facilitate car-sharing and bike sharing programs.

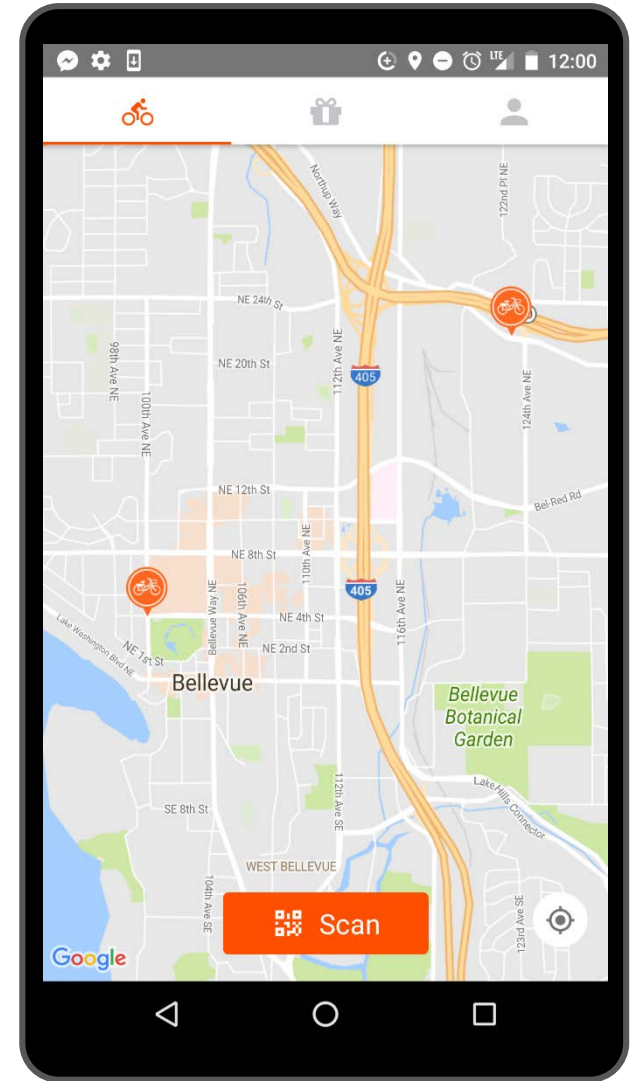
TR-115. Support establishment and operation of a bicycle sharing program in Bellevue.



Task 6: Bike Share Feasibility Study & Implementation Strategy

“Provide people in Bellevue access to a bicycle when they want one, without having to worry about storage, security, and maintenance.”

– PBII Scope of Work





BELLEVUE
**PEDESTRIAN
& BICYCLE**
IMPLEMENTATION INITIATIVE

Eastside Bike Share Fair (9/27/17)



BELLEVUE
PEDESTRIAN
& BICYCLE
IMPLEMENTATION INITIATIVE

Bicycling and Bike Share in Bellevue

9. If a bike share service was available in Bellevue today, would you use bike share in Bellevue?

- Yes, I would use bike share in Bellevue
- No, I would not use bike share
- I don't know

Please explain why or why not.

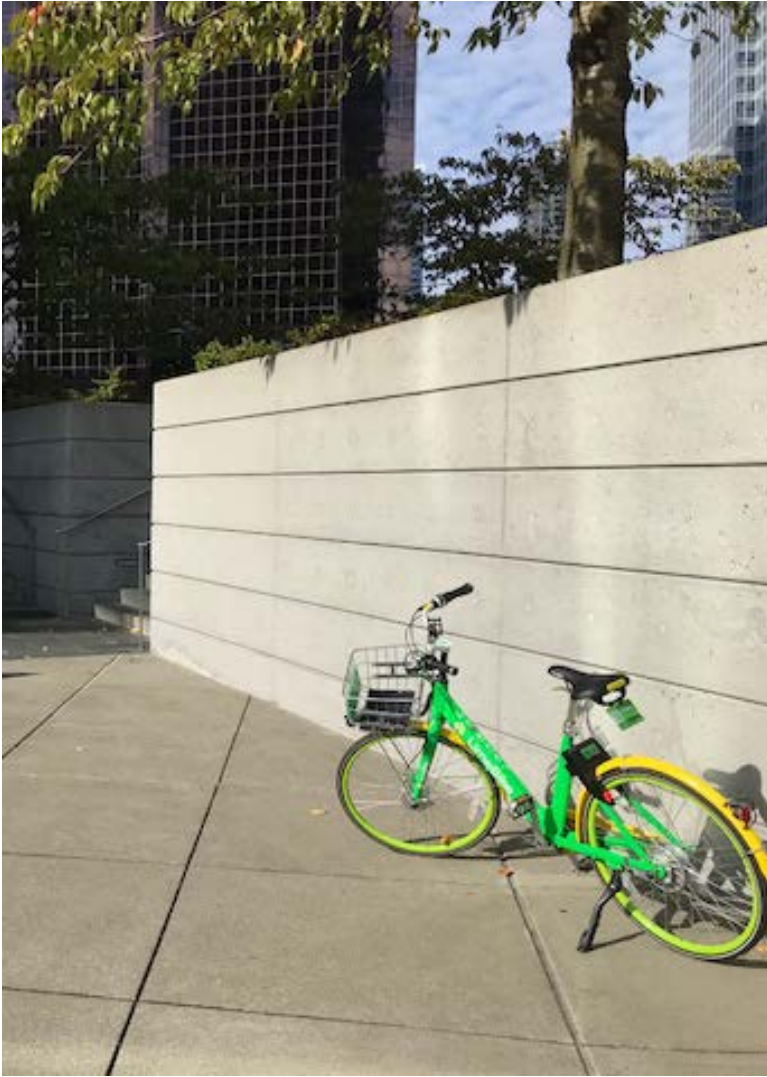
10. If a bike share service was available in Bellevue today, in which parts of the city would you use bike share?

- Downtown Bellevue



BELLEVUE
PEDESTRIAN
& BICYCLE
IMPLEMENTATION INITIATIVE

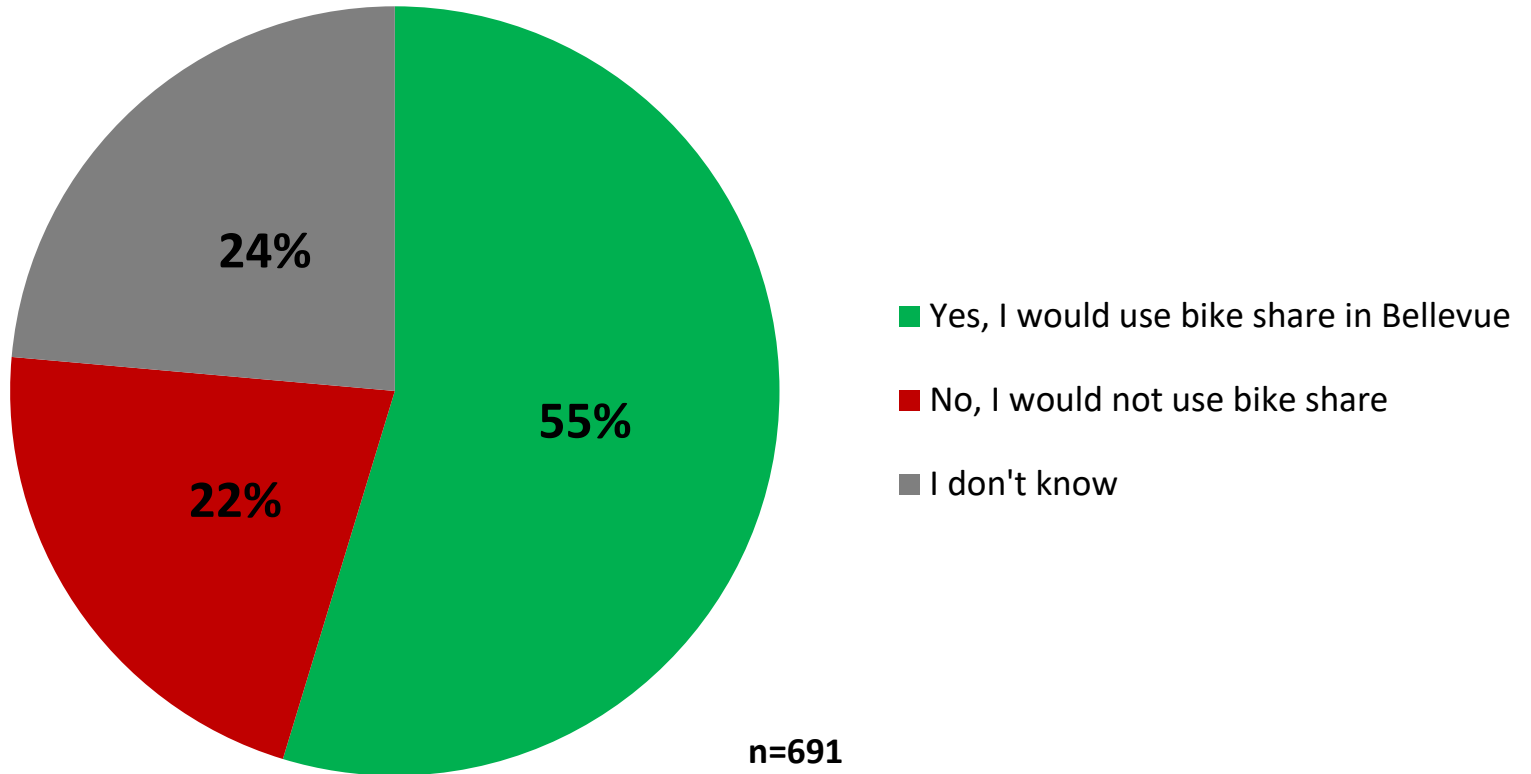
Bike Share Survey



Total Respondents: 816

- 52% are Bellevue residents
- 34% work in Downtown Bellevue
- 20% work in Seattle
- 17% work in other Eastside communities

If a bike share service was available in Bellevue today, would you use bike share in Bellevue?



Do you have any comments or concerns you would like to share about the possibility of bike share coming to Bellevue?

Response Themes	Count
Generally Positive	91
Install More Bike Lanes (Any Type)	82
Improve Safety (General)	77
Biking in Bellevue is Dangerous (General)	54
Install Separated Bike Lanes	53
No City Funding of Bike Share	44
Bike Clutter	36
Drivers Are Dangerous/Aggressive	35
Improve Infrastructure First	30
Pedestrian Safety from Bikes on Sidewalks	24
Helmet Use / Helmet Law	24
Improve Sidewalks/Crosswalks	24

n=465

“I think it would be awesome! There are so many times that I want to run an errand in downtown Bellevue that is slightly too far for me to walk, but it's a pain to use my car all the time. It would be easier if there was a bike option.”

“Please make it happen! With all the congestion and lack of parking, a bike share system would be such an awesome alternative for getting around. I would shop and go out to eat in downtown Bellevue more often if I could bike instead of drive.”

“Bike share in Bellevue would be great. Then I could bus from Seattle and ride a bike to work from the transit center instead of having three bus transfers.”

Do you have any comments or concerns you would like to share about the possibility of bike share coming to Bellevue?

Response Themes	Count
Generally Positive	91
Install More Bike Lanes (Any Type)	82
Improve Safety (General)	77
Biking in Bellevue is Dangerous (General)	54
Install Separated Bike Lanes	53
No City Funding of Bike Share	44
Bike Clutter	36
Drivers Are Dangerous/Aggressive	35
Improve Infrastructure First	30
Pedestrian Safety from Bikes on Sidewalks	24
Helmet Use / Helmet Law	24
Improve Sidewalks/Crosswalks	24

n=465

“My only concern is based on my experience with the bike shares in Seattle, which is that people leave the bikes anywhere. It results in a lot of clutter and blocking of sidewalks and bike paths.”

“I would love to see bike share in Bellevue—but I think it's feasibility is limited until a real connected network of bike routes exists in downtown Bellevue.”

“I think Bellevue has the opportunity to beat Seattle to having a connected network of protected bike lanes, and this could have profound positive impacts on public health, livability, and desirability, even for those who currently do not bike. If you build it, they will come!”



Su Development



Support for Bike Share



Why permit bike share?

- Act on adopted policy
- Facilitate mobility options
- Welcome and foster innovation
- Establish a legal framework for private services
- Assert regulatory authority over public right of way
- Enforce compliance in support of community values



If we do nothing:

- Little influence over if/how private bike share operates in Bellevue
- Antagonistic relations with bike share service providers
- No new data collected to support demo bikeway or broader PBII (Task 5)

If we permit and regulate:

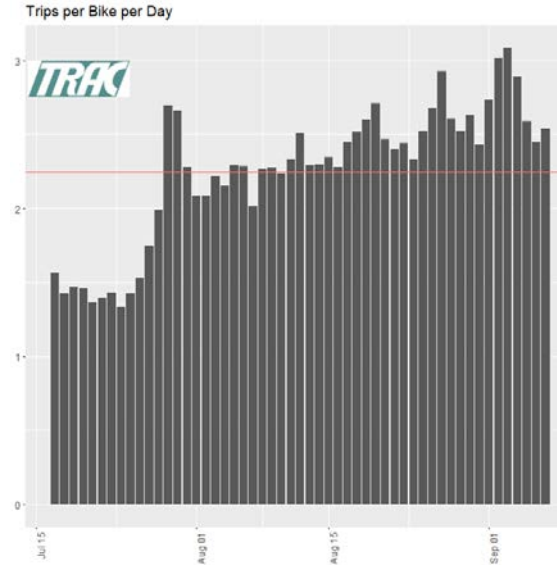
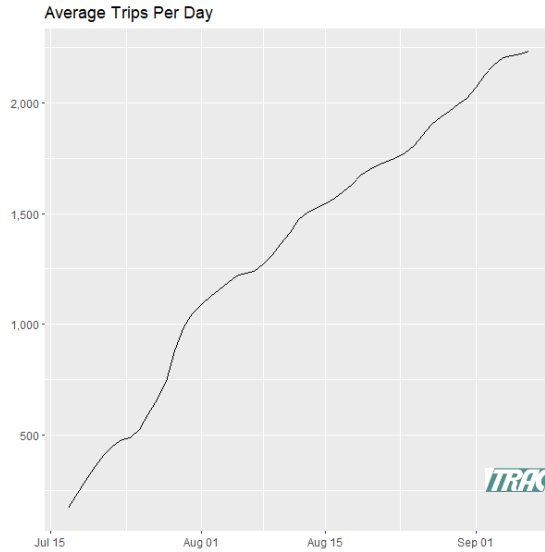
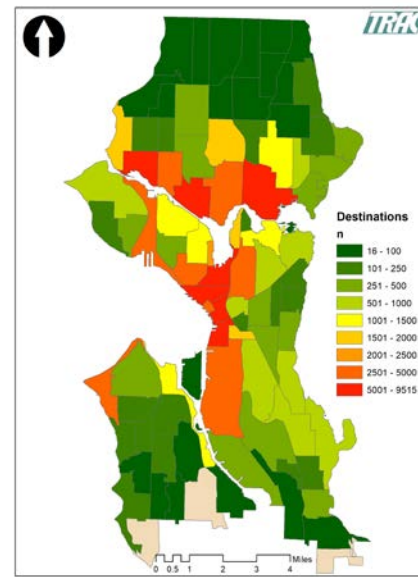
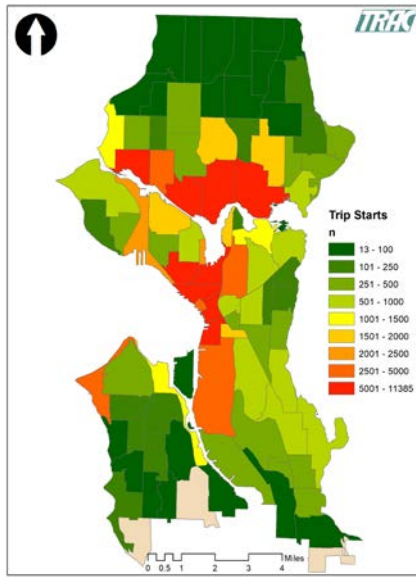
- More flexible, affordable mobility options
- Collaborate with bike share service providers to achieve desired outcomes
- Collect extensive data on bicycle travel
- Expand reach of transit service (first/last mile)
- Coordinate with regional neighbors
- Support oversight and enforcement with fees



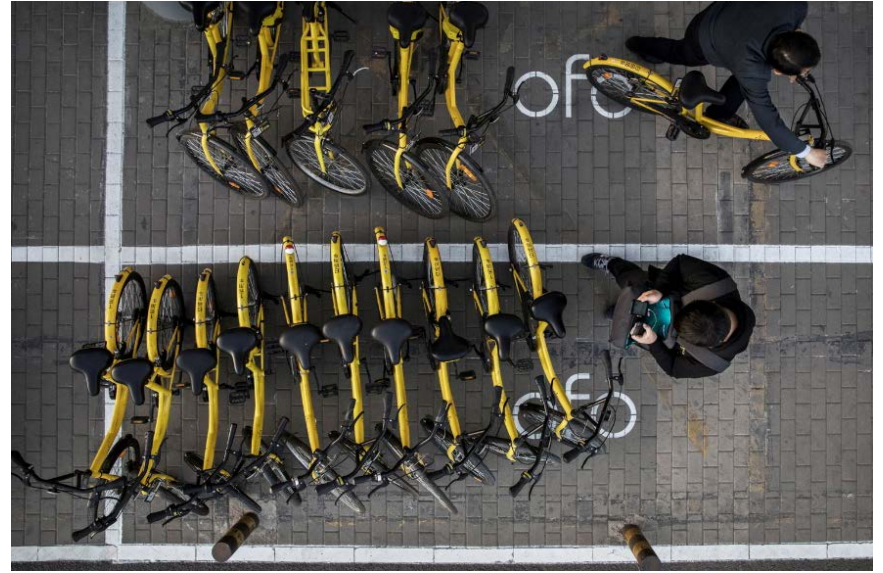
Bike Share Permit Goals and Requirements:

- Pilot
- Safety
- Parking
- Operations
- Data
- Enforcement
- Fees





- **Rider Profile** – Gender, age bracket, city of residence
- **Bicycle Identification** – Company, type, model, plate number
- **Trip Records** – Duration, distance, origin/destination, date/time
- **Location & Availability** – GPS coordinates, duration, date/time
- **Bike Maintenance** – Who requested, date/time of request and response, issue type, action taken
- **Collisions** – Date/time, police report filed, injury
- **Parking Issue Response** – Who reported, date/time of request and response, action taken







- **Draft recommendation is to implement a pilot permit valid for up to one year**
- **Compliance with requirements will be monitored and enforced**
- **Data will be collected from operators and via community engagement, informing evaluation**



Transportation Commission

TRANSMITTAL

DRAFT

February 5, 2018

The Honorable Mayor John Chelminiak
Members of the Bellevue City Council
450 110th Avenue NE
Bellevue, WA 98004

RE: Commission Recommendation – Downtown Demonstration Bikeway Project and Citywide Bike Share Pilot Program

Dear Mayor Chelminiak and City Councilmembers:

Transportation Commission members are honored by your trust and confidence in selecting us to oversee the Pedestrian and Bicycle Implementation Initiative (PBI). In this capacity, we have been guided by Council's program principles as we collaborate with staff and the community to advance the PBI scope of work. Tonight for your consideration are the following two recommendations:

- **Downtown Demonstration Bikeway Project** – At its Jan. 11, 2018 meeting, the Transportation Commission voted five in favor and two opposed in recommending that the City Council direct staff to proceed with implementing a downtown demonstration bikeway project. Using temporary and low-cost treatments, the demonstration bikeway project will implement improvements to create a "high-comfort" bikeway along one corridor in Downtown Bellevue. Of the four candidate corridors considered, it is recommended that the project be implemented along 108th Ave NE from Main St to NE 12th St, which is identified as a north-south priority bicycle corridor and provides connections to regional bicycle routes.
- **Citywide Bike Share Pilot Program** – At its Jan. 25, 2018 meeting, the Transportation Commission voted ____ in recommending that the City Council direct staff to proceed with creating a permit that establishes the legal framework for private companies to operate bike share services in Bellevue as a pilot program for a period of up to one year. Compliance with permit terms will be monitored and enforced as warranted. Data will be collected from bike share operators and via community engagement, which will inform evaluation of the program.

Pending Council concurrence it is recommended that staff commence work on:

- Design and permitting with a target implementation date of May 2018 (which corresponds with Bike to Work Month);
- Developing a scope of work to assess outcomes for all street users, including people bicycling, walking, driving, using transit, and transporting goods, based on data and community engagement;
- Coordinating with private and non-profit organizations to support the launch and test period of the downtown demonstration bikeway project with education and encouragement activities.

The data collection period informing the evaluation of both the demonstration bikeway project and bike share pilot program will last through December 2018. Modest operational refinements may be made to the demonstration bikeway during this period as required to maintain safety for all street users. Staff will share the results of the evaluation with the Transportation Commission in early 2019 to inform their consideration of next steps—that is, whether and how to make the bikeway project and the bike share program permanent.

Sincerely,

Vic Bishop
Chair, Transportation Commission

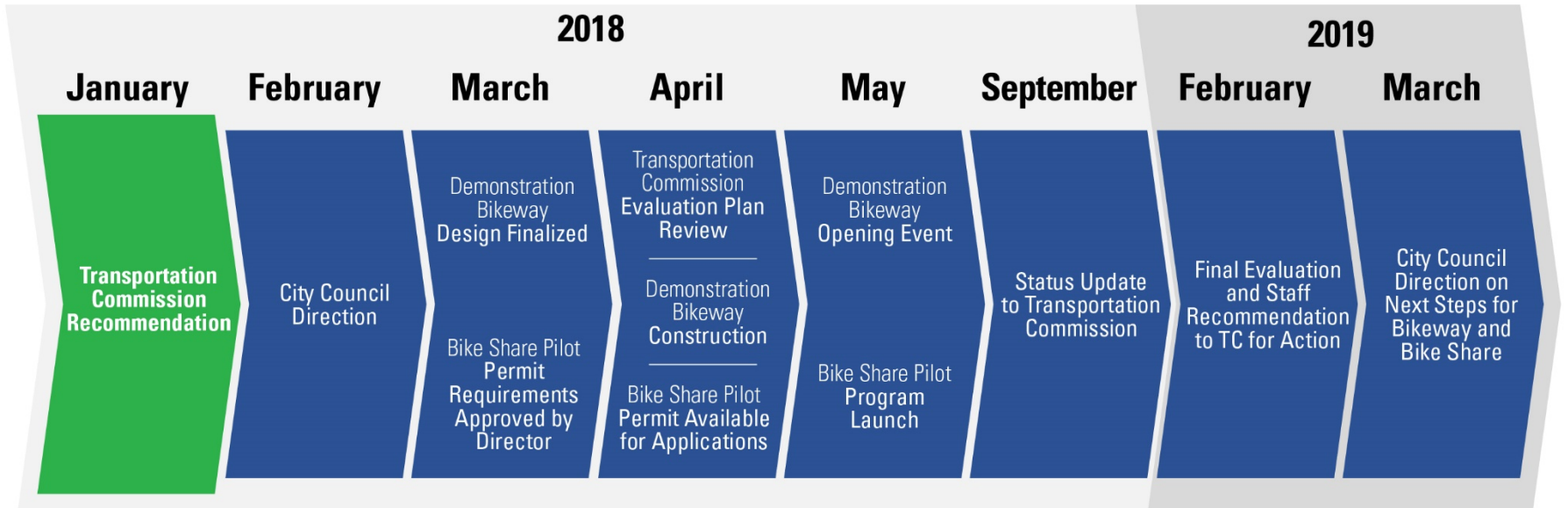
Attachment A – Project Description and Map

1. Is there a motion to approve the staff recommendation on the scope and timing of implementing a citywide bike share pilot program?
2. Who does the Commission authorize to represent the transmittal of the recommendation to the Council?



BELLEVUE
**PEDESTRIAN
& BICYCLE**
IMPLEMENTATION INITIATIVE

TC Recommendation | Letter





Franz Loewenherz
Transportation Department
floewenherz@bellevuewa.gov
425-452-4077

Andreas Piller
Transportation Department
apiller@bellevuewa.gov
425-452-2931