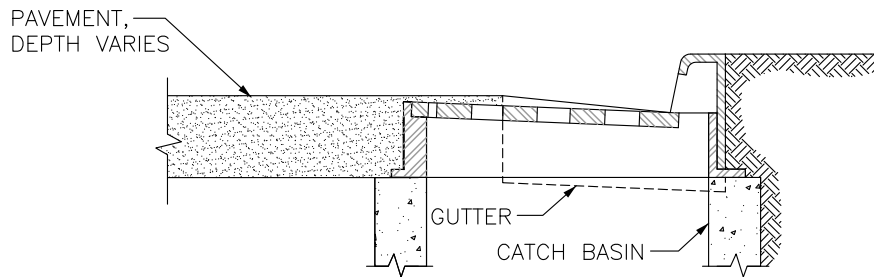


SECTION B-B



SECTION A-A

NOTES:

1. SET TO GRADE AND CONSTRUCT ROAD AND GUTTER TO BE FLUSH WITH FRAME.
2. HOOD SHALL MATCH TOP OF CURB ELEVATION.



City of
Bellevue

STORM AND SURFACE
WATER UTILITY

TITLE

THROUGH-CURB INLET
FRAME INSTALLATION