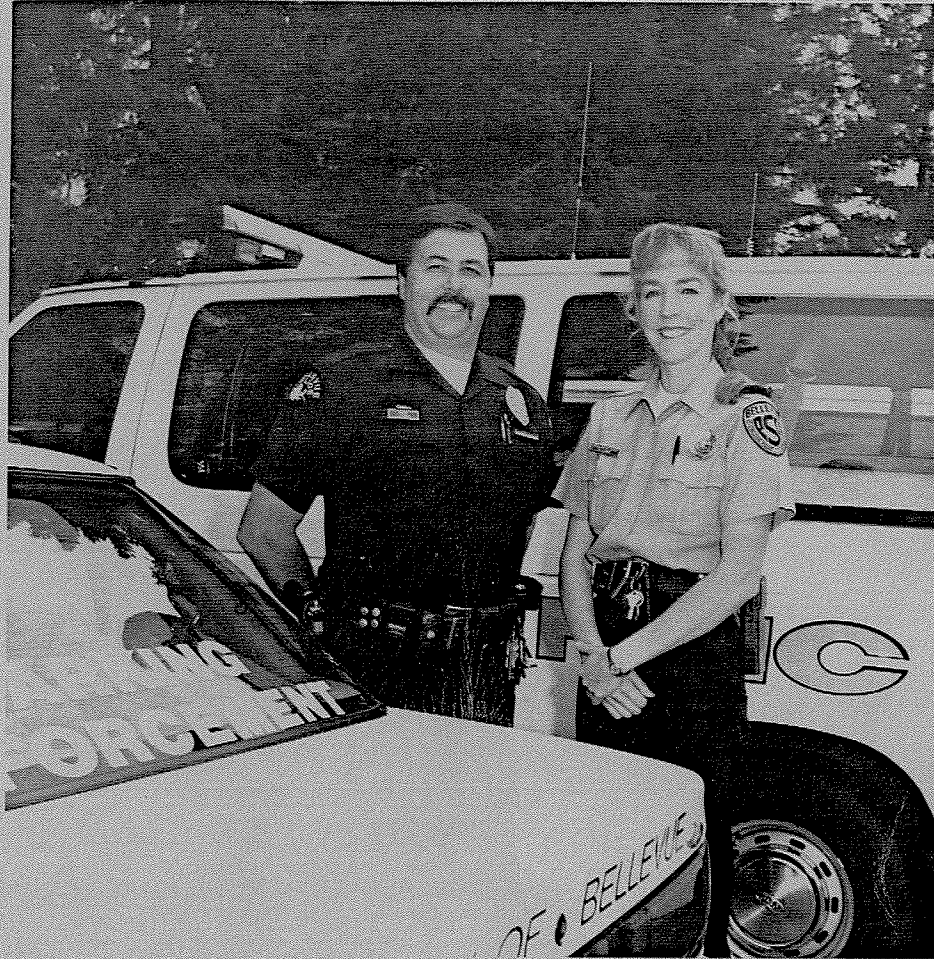


Jan Wyman

**TRAFFIC SECTION**  
**1994 OPERATIONAL SUMMARY**



**City of Bellevue Police Department**

**Operations Division**



**Chief of Police**  
**Joseph A. Smith**

## INTRODUCTION

The Police Traffic Operational Summary is a yearly publication prepared by the Bellevue Police Department Traffic Section and is intended to summarize Police Traffic Operations. This edition outlines 1994 activities.

Sources of data reported in this document include Washington State Traffic Collision Reports, Monthly Accident/Citation Summaries and Traffic Officer Activity Summaries.

Cover: Traffic Safety Officer Tom Baker and Parking Enforcement Officer Becky Lemke

**POLICE TRAFFIC OPERATIONAL SUMMARY  
FOR THE 1994 CALENDAR YEAR**

<u>TABLE OF CONTENTS</u>	<u>PAGE</u>
ORGANIZATIONAL CHART .....	1
OVERVIEW .....	2
TRAFFIC ACCIDENTS .....	4
Total Accidents .....	4
Fatal Accidents .....	4
Fatal Transportation Accident .....	4
Injury Accidents .....	4
Property Damage Only Accidents .....	4
Street vs. Private Property Accidents .....	4
Traffic vs. Patrol Investigations .....	4
Total Accidents Four-Year Comparison .....	5
Severity Rate .....	5
Recap of Vehicle Traffic Fatalities for 1994 .....	8
Recap of Transportation Fatality for 1994 .....	8
Pedestrian Accidents .....	8
Bicycle Accidents .....	9
DWI Accidents .....	10
Hit and Run Accidents .....	11
Monetary Loss .....	11
Police Vehicle Accidents .....	12
Traffic Engineering .....	12
TRAFFIC ENFORCEMENT .....	13
Traffic Patrol .....	13
CARE Program .....	14
Enforcement Totals .....	15
DWI Enforcement .....	16
Hit and Run Investigations .....	17
Parking Enforcement .....	17
Driver Violations .....	18
Post-accident Enforcement .....	19
Other Enforcement .....	19
Traffic Safety Program .....	20
CALLS FOR SERVICE .....	22
SPECIAL EVENTS .....	23
SAFETY RESTRAINT USE .....	24

TABLE OF CONTENTS

PAGE

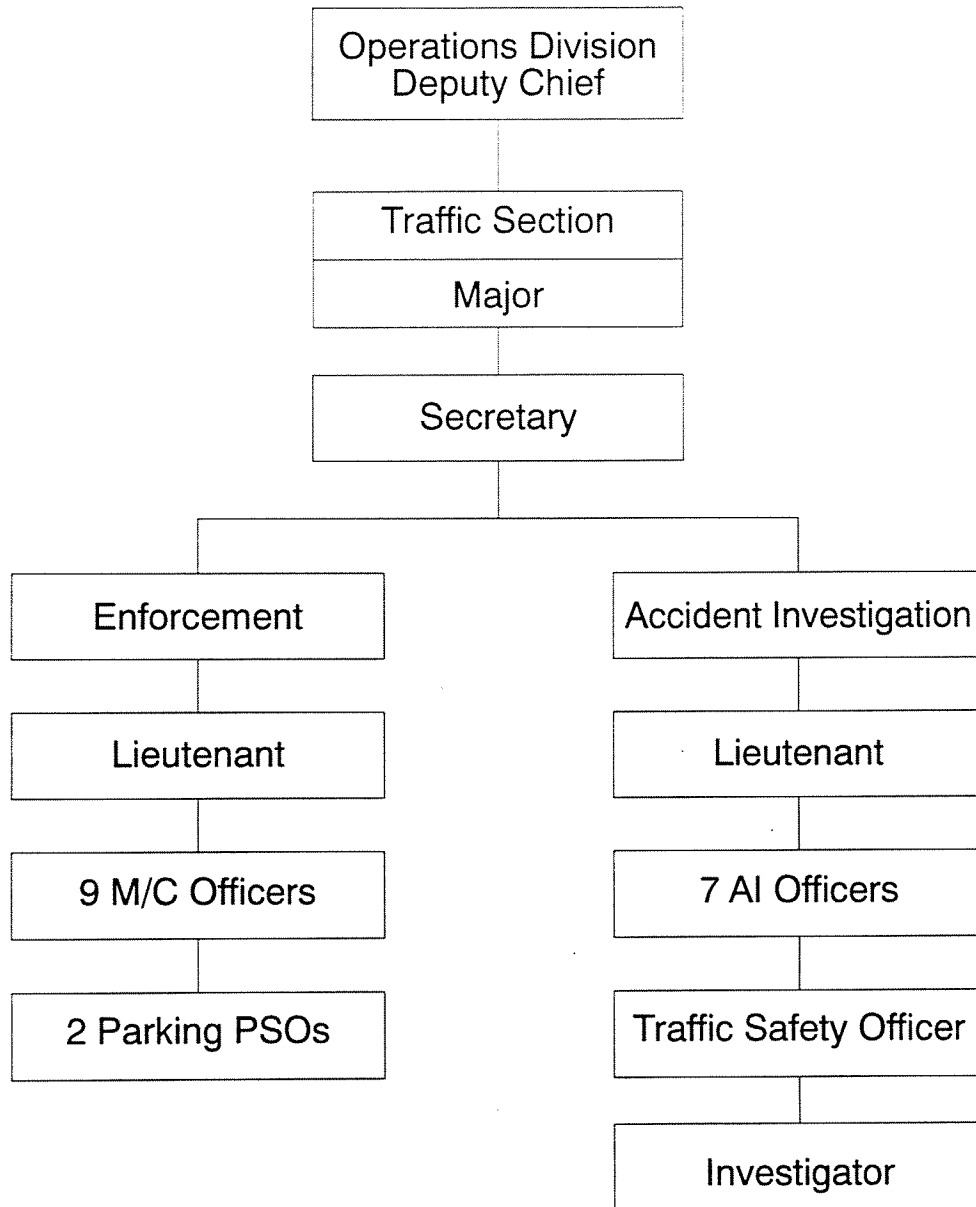
ANNEX A - Summary: 1994 Annual Traffic Statistics

ANNEX B - 1994 Eastside DWI Task Force Holiday Emphasis Statistics

ANNEX C - Accidents and Citations By District

# 1994 ORGANIZATION CHART

The Traffic Section is an element of the Operations Division.



## OVERVIEW

There were 1,810 accidents investigated in 1994, a 12% increase from 1993. The Traffic Section investigated 81% of the total accidents.

Two people (pedestrians) were killed in two fatal traffic accidents in 1994. There were no traffic deaths in 1991, 3 in 1992, and 1 in 1993. Since 1972, an average of 3 persons have been killed in traffic each year, with a high of 9 deaths in 1979, and 7 in 1982.

There were 658 injury accidents in 1994, a 9% increase compared to 1993. A total of 926 persons were injured, a 10% increase from 1993 and a 9% increase from the previous 3-year average.

A total of 25,846 traffic citations were issued in 1994, a 2% increase compared to 1993.

There were 477 DWI arrests in 1994, a 2% increase compared to 1993. DWI accidents increased by 13% compared to 1993 (60 accidents in 1994 vs 53 in 1993). There were no alcohol-related fatalities in 1994. The last alcohol-related fatal accident in Bellevue occurred in 1987.

The Department continued to take the lead in the joint Eastside police DWI emphasis patrols. Seven emphasis patrols were conducted during the year (excluding the Christmas holidays) resulting in 97 DWI arrests. During the Christmas holidays, the patrols accounted for 54 arrests in 11 days. The strategy of multi-agency patrols continues to be an effective method of combating DWI.

Mothers Against Drunk Drivers (MADD) recognized Officer Mike Chiu for his efforts in removing intoxicated drivers from the road. Officer Chiu accounted for 81 DWI arrests in 1994.

The Department was recognized for outstanding performance in seat belt education and enforcement during 1994. A \$10,000 Washington Traffic Safety Commission (WTSC) grant was received to support seat belt education and enforcement programs. A total of 2,487 persons attended the Department's seat belt education class in 1994 compared to 1,920 persons in 1993.

The Traffic Section planned, coordinated and participated in 10 community special events in 1994. Some of the events included the following: the Arts & Crafts Fair, the Eastside Cultural Street Fair, Seafair Balloon Parade and the Shriner's Parade.

Bellevue Police motor officers attending the 7th annual Oregon-Washington Motor Officers Association training conference in 1994, claimed top motor-riding awards for the fifth year. Nearly 50 officers competed from throughout the Northwest. Officers Jene Ladke and Scott Hayward received the first place Best Team Award. Officers Dave Ethredge and Pat Spak also received an award for their performance in a Team Event. Best Overall rider second place was received by Officer Jean Ladke. Best Overall Rider third place was received by Officer Scott Hayward. Best First Year Rider was awarded to Officer Pat Spak. These officers also received other awards.

The Traffic Section, working in conjunction with the City Transportation Department, conducted the "Neighborhood Speed Watch Program" throughout 1994. The Speed Watch Program involves the use of a portable trailer equipped with a radar gun that picks up the speed of vehicles and displays the speed on a digital reader board. The goal of the program is to educate motorists and to gain compliance with the posted speed limits. The Speed Watch Trailer was utilized 125 times at various locations throughout the city in 1994.

During the Christmas holiday period, pedestrians were invited once again to "have a cup—on the cops." Officers, along with "Pedbee" mascot, handed out over 400 tickets for a latte or hot chocolate, to pedestrians who crossed the street safely at high accident locations. This campaign, funded with donations from Starbucks Coffee and the Washington State Traffic Safety Commission emphasized pedestrian safety during the holiday season.

The department continued its effort with the Pedestrian Safety Program. This program which was started in 1992 allows officers to issue warning tickets to pedestrians and drivers who violate pedestrian safety laws. In 1994, 507 warnings were issued.

Officers from the traffic section received various awards during 1994 for their work in Traffic Safety Education. In March of 1994 the Washington State Traffic Safety Commission awarded the traffic section 2 awards for its efforts in seat belt education and pedestrian safety. In December of 1994 Lt. Jim Hershey, Det. Dan Hatten, Officers Doug Deyo, Tom Lisk, Jene Ladke, Rick Strocsher and Tom Baker received awards for their efforts in seat belt education and other traffic safety issues. The Traffic section also received awards for the seat belt education program and its enforcement program. These awards were a part of the "Three Flags" Program involving law enforcement agencies from Washington, Oregon and British Columbia to educate the public about the importance of wearing seat belts.

One new traffic manual was prepared in 1994. The Bicycle Safety Program manual was completed by Officer Tom Baker. Bicycle Safety has been included as a regular part of Officer Baker's Traffic Safety presentations.

## TRAFFIC ACCIDENTS

### Total Accidents

There were 1,810 accidents investigated in 1994. This was a 12% increase compared to 1993. City street accidents were down 4% from the previous 3-year average.

### Fatal Accidents

Two people were killed in two fatal traffic accidents in 1994. There was one fatal accident in 1993. The previous 3-year average is two deaths.

### Fatal Transportation Accident

One person was killed in a fatal train accident in 1994. This accident is not recorded as a motor vehicle accident.

### Injury Accidents

There were 658 injury accidents investigated in 1994, a 9% increase compared to 1993 and a 17% increase compared to the previous 3-year average. All reported injuries totaled 926, a 10% increase from the previous 3-year average.

### Property Damage Only Accidents

There were 1,158 property damage only accidents investigated in 1994, a 13% increase from 1993.

### Street vs. Private Property Accidents

Of the 1,810 accidents investigated, 91% (1,640) occurred on City streets and 9% (170) occurred on private property.

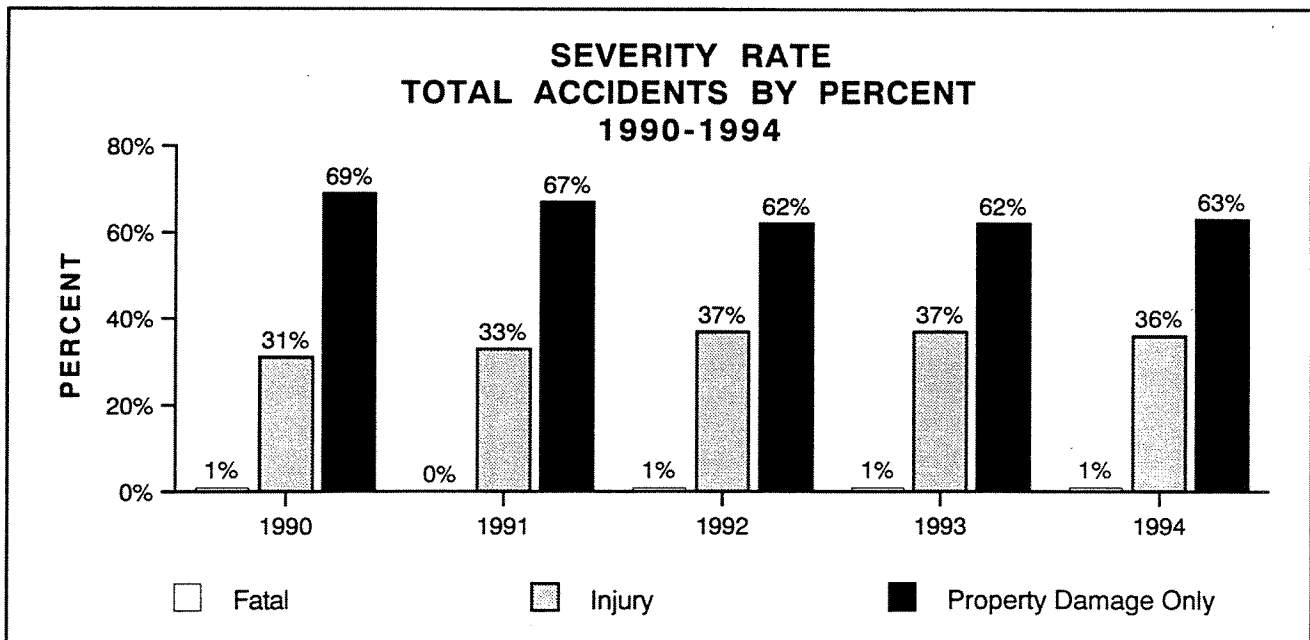
### Traffic vs. Patrol Investigations

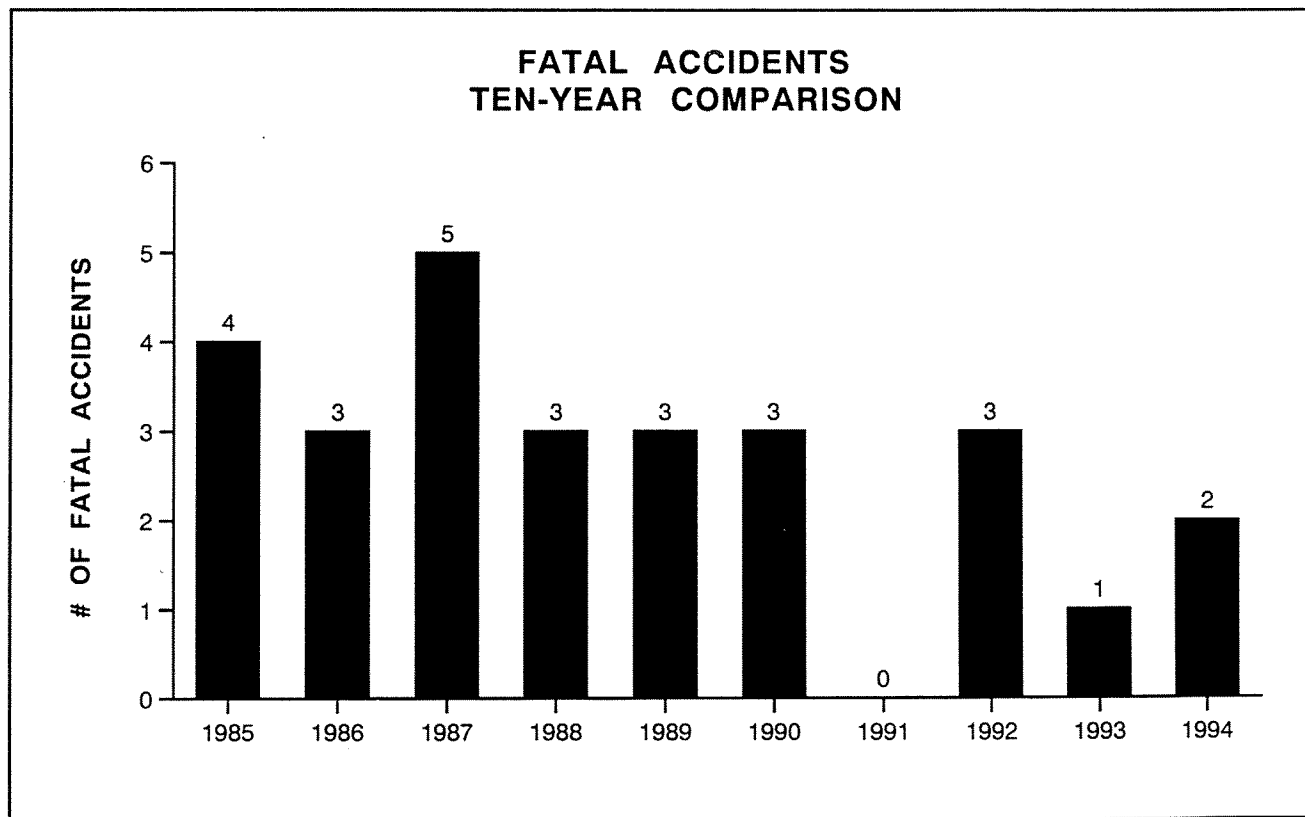
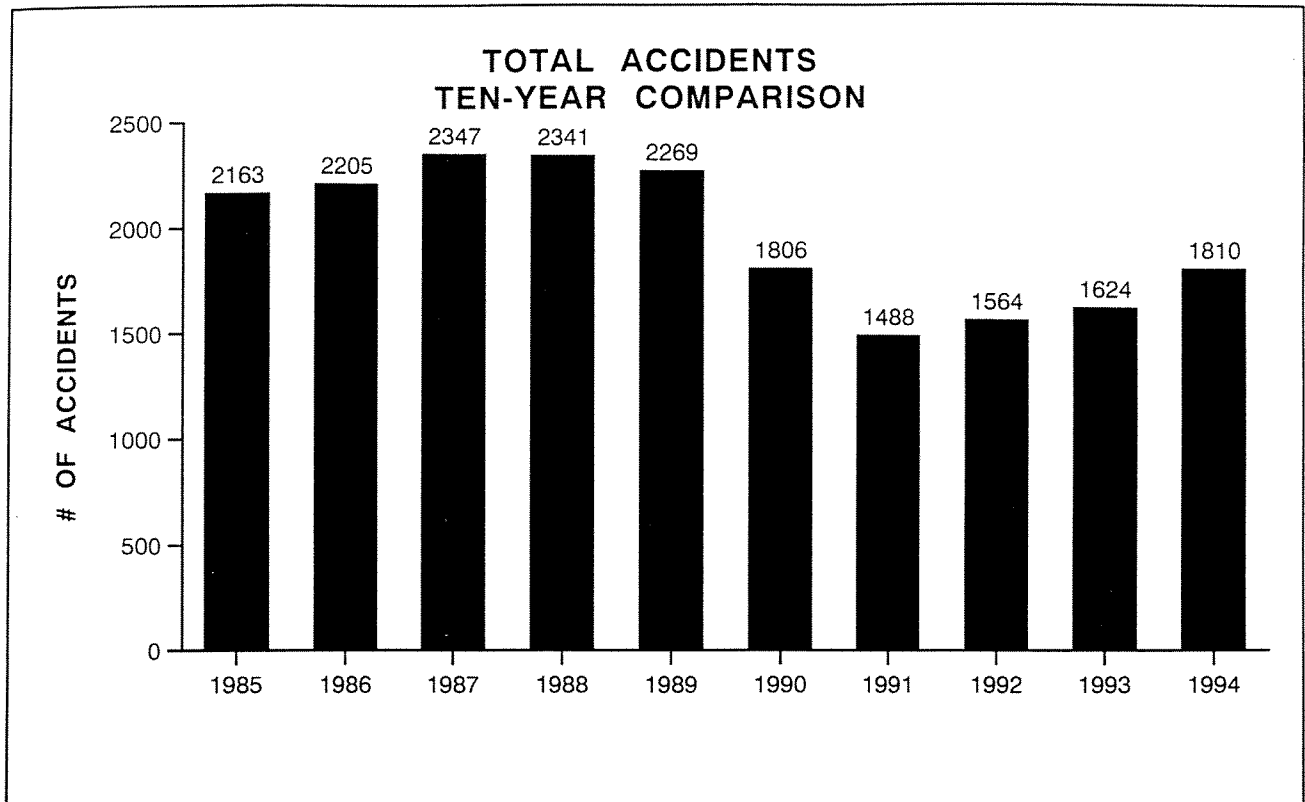
A Traffic Section goal is to investigate 85% of all accidents reported in a calendar year. In 1994, Traffic investigated 81% and Patrol, 19% of the total. This compares to 80% by Traffic and 20% by Patrol in 1993.



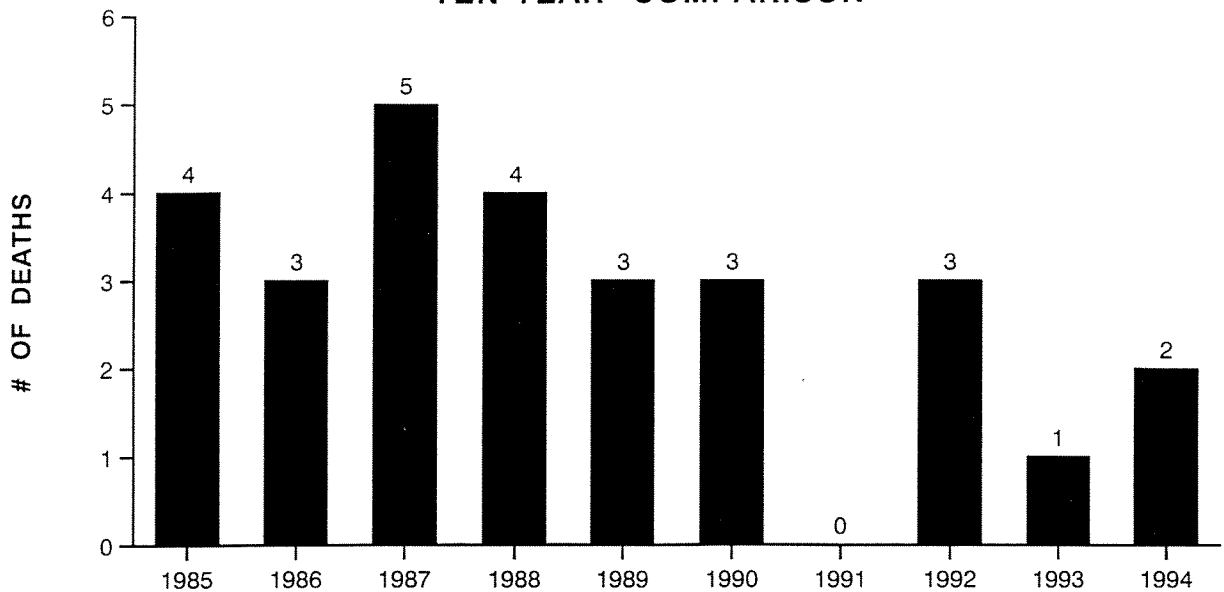
TOTAL ACCIDENTS FOUR-YEAR COMPARISON						
Impact	Year				Previous 3-year Average	% of Change 94 — 3-year Average
	1994	1993	1992	1991		
Total Accidents	1,810	1,624	1,564	1,488	1,559	16%
Fatal Accidents	2	1	3	0	2	0%
Total Killed	2	1	3	0	2	0%
Injury Accidents	658	603	591	486	560	17%
Total Injured	926	843	832	701	792	17%
Property Damage Only Accidents	1,158	1,020	970	1,002	997	16%
Total Street Accidents	1,640	1,563	1,529	1,445	1,512	8%
Total Private Property Accidents*	170	61	35	43	46	270%
Accidents Investigated By Traffic	1,468	1,301	1,289	1,254	1,281	15%
Accidents Investigated By Patrol	342	323	275	231	276	24%

\* Effective January 1, 1990, Department policy changed to investigate private property accidents involving only death, possible death, DWI, vehicular assault, City property or City vehicle involved; policy changed in October, 1993 to include serious injury, hit and run with suspect information and accidents which originate on a City street and where injury occurs on private property.

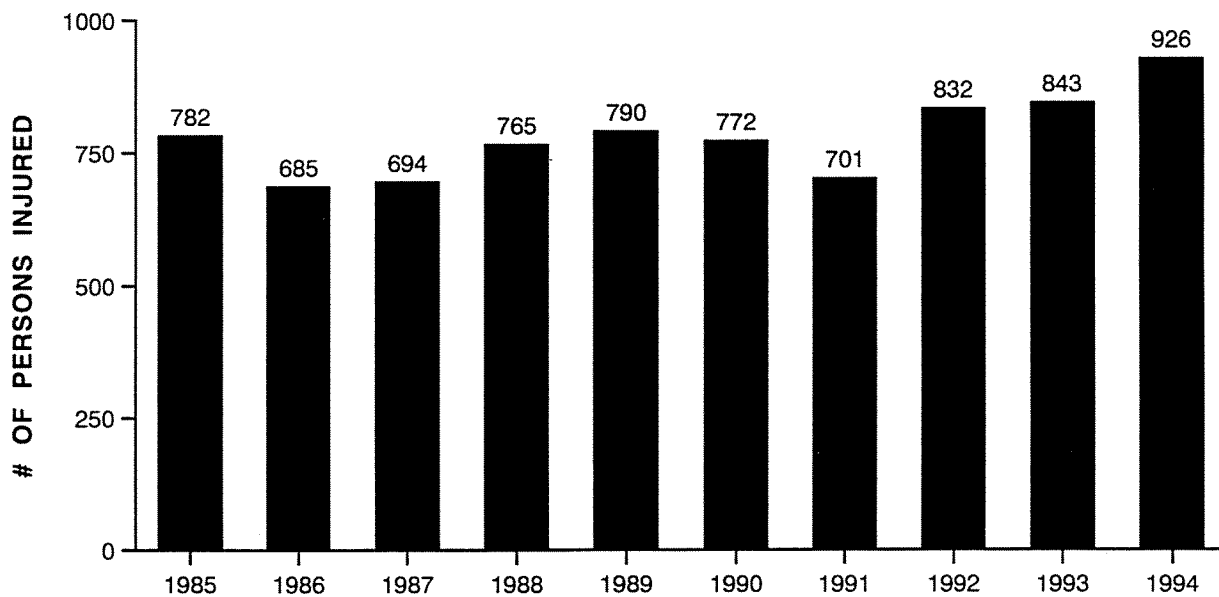




**PERSONS KILLED  
TEN-YEAR COMPARISON**



**PERSONS INJURED  
TEN-YEAR COMPARISON**



### Recap of Vehicle Traffic Fatalities for 1994

March 12, 1995, 0940 hours. A 79 year old Bellevue woman was struck and killed as she stood outside her car, when the vehicle rolled over her. The collision occurred in the 16800 block of SE 26th. 94B-03282.

March 24, 1995, 1556 hours. A 53 year old Bellevue woman was struck as she crossed the street in her wheelchair at NE 13th and 156th Ave. NE. She died three days later at the hospital from injuries sustained in the collision. 94B-03736.

### Recap of Transportation (Railroad Crossing) Fatality for 1994

May 29, 1994, 2034 hours. A 48 year old Bellevue woman and her dog were struck and killed by a train as they walked along the Burlington Northern Railroad Tracks near the area of 120th Ave. NE and Northup Way. 94B-07019. This accident was investigated by the Traffic Section, but was not recorded as a motor vehicle collision.

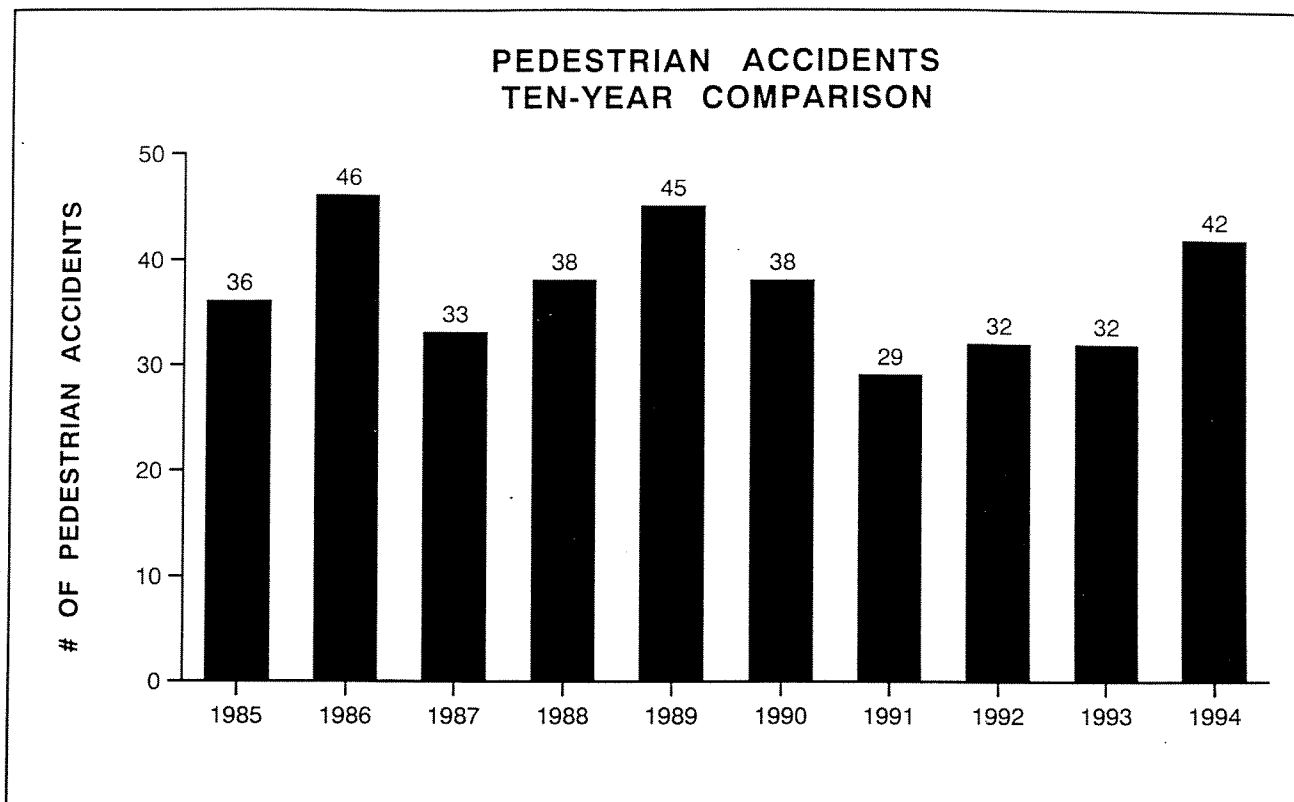
### Pedestrian Accidents

In 1994, 42 pedestrian accidents were investigated, a 31% increase compared to 1993. Two pedestrians were killed, 38 were injured. This was a 100% increase in the number killed, and a 35% increase in the number injured compared to the previous 3-year average.

In 1993, the Department received a WTSC grant to enhance traffic safety by supporting a program designed to provide pedestrian education and enforcement activities conducted by Bellevue Police Officers.

The Department's pedestrian safety program started in conjunction with the City's Pedestrian Safety week in September 1992. A unique feature of the program is the ability of officers to issue a written warning to either a driver or pedestrian committing a pedestrian-involved traffic violation. In 1994, traffic officers issued 507 warnings. Improved pedestrian safety will remain a Department goal.

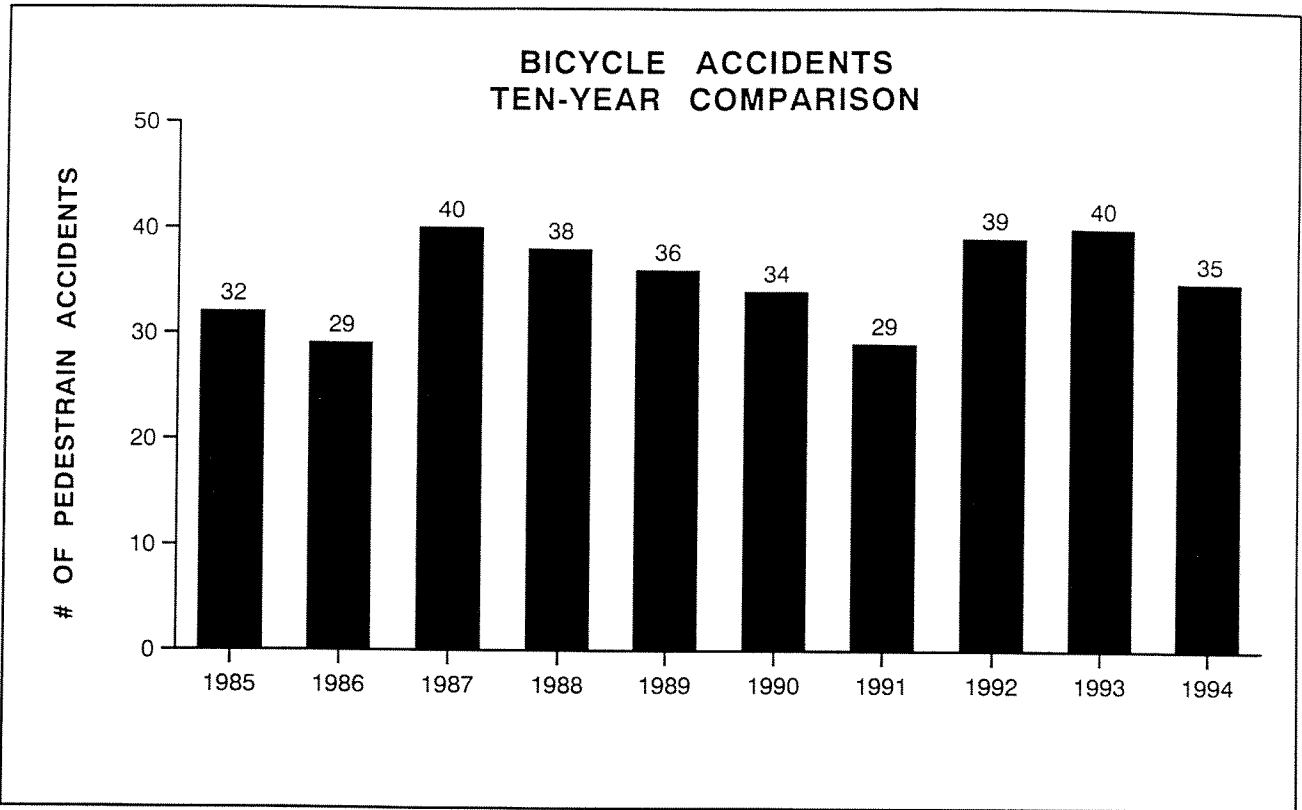
<b>PEDESTRIAN ACCIDENTS FOUR-YEAR COMPARISON</b>						
<b>Impact</b>	<b>Year</b>				<b>Previous 3-year Average</b>	<b>% of Change 94 — 3-year Average</b>
	<b>1994</b>	<b>1993</b>	<b>1992</b>	<b>1991</b>		
Total Pedestrian Accidents	42	32	32	29	31	35%
Pedestrians Killed	2	1	1	0	1	100%
Pedestrians Injured	38	28	29	28	28	35%



### Bicycle Accidents

In 1994, bicycle accidents decreased by 5% from the previous 3-year average. No bicyclists were killed, 31 were injured.

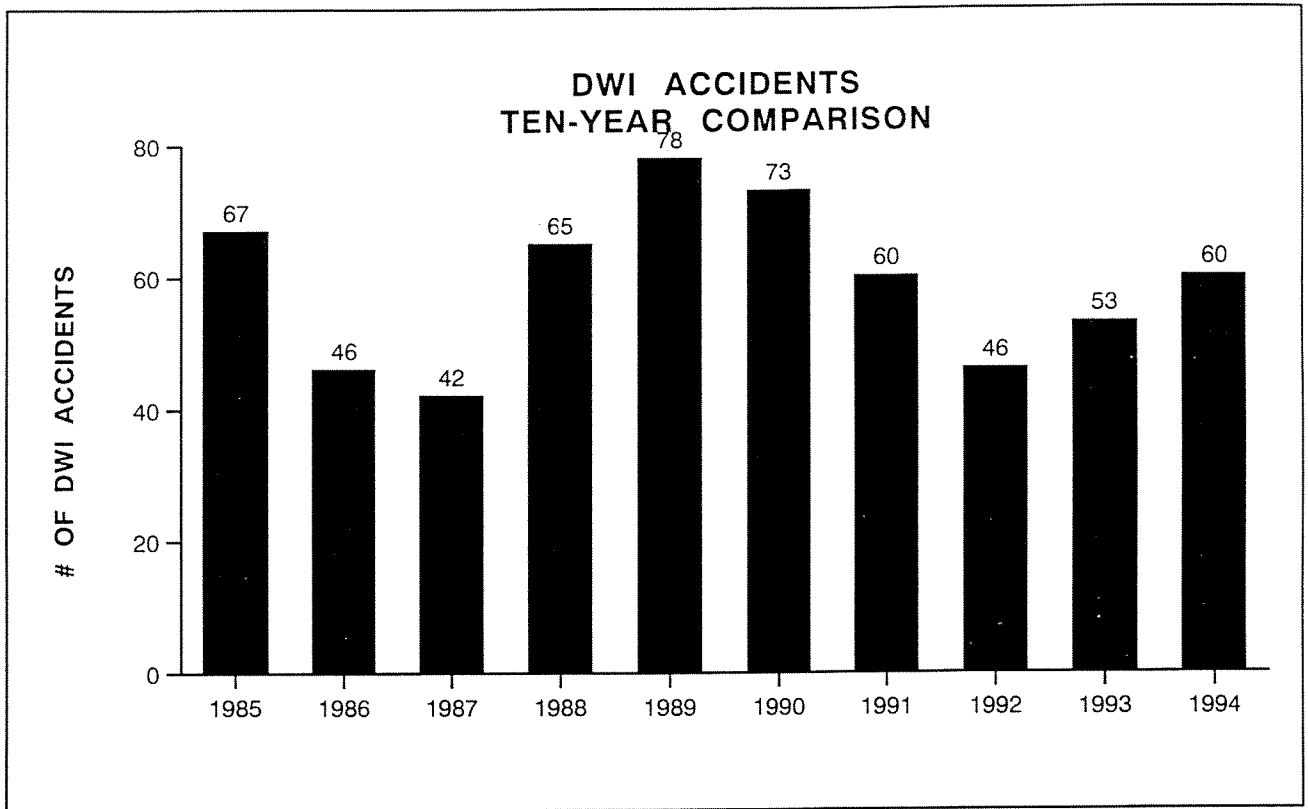
<b>BICYCLE ACCIDENTS FOUR-YEAR COMPARISON</b>						
<b>Impact</b>	<b>Year</b>				<b>Previous 3-year Average</b>	<b>% of Change 94 — 3-year Average</b>
	<b>1994</b>	<b>1993</b>	<b>1992</b>	<b>1991</b>		
Total Bicycle Accidents	35	40	42	31	37	- 5%
Bicyclists Killed	0	0	0	0	0	0%
Bicyclists Injured	31	37	39	25	35	- 9%



**DWI Accidents**

Sixty accident investigations resulted in the arrest of a drinking driver, a 13% increase from the previous 3-year average.

DWI ACCIDENTS FOUR-YEAR COMPARISON						
Impact	Year				Previous 3-year Average	% of Change 94 — 3-year Average
	1994	1993	1992	1991		
DWI Accidents Resulting in Arrest	60	53	46	60	53	13%



**Hit and Run Accidents**

There were 292 hit and run accidents reported in 1994, a 61% increase from 1993 (173 in 1993 vs. 292 in 1994).

**Monetary Loss**

Monetary loss is calculated by totaling the estimates recorded on the initial accident report and includes damage to vehicles and other property. Monetary loss does not include medical, legal and other costs and should be considered a conservative estimate.

<b>MONETARY LOSS FROM VEHICLE ACCIDENTS FOUR-YEAR COMPARISON</b>						
<b>Estimate</b>	<b>Year</b>				<b>Previous 3-year Average</b>	<b>% of Change 94 — 3-year Average</b>
	<b>1994</b>	<b>1993</b>	<b>1992</b>	<b>1991</b>		
<b>\$ Loss</b>	5,853,964	4,722,788	4,767,746	4,177,406	4,555,980	22%

### Police Vehicle Accidents

There were 16 police vehicle accidents reported in 1994. Of that total, 10 (62%) were determined by the Department's Accident Review Board to be preventable, 6 (38%) were nonpreventable. The 1994 total was a 36% decrease compared to the previous 3-year average.

<b>POLICE VEHICLE ACCIDENTS FOUR-YEAR COMPARISON</b>						
<b>Type</b>	<b>Year</b>				<b>Previous 3-year Average</b>	<b>% of Change 94 — 3-year Average</b>
	<b>1994</b>	<b>1993</b>	<b>1992</b>	<b>1991</b>		
Total Accidents	16	27	24	21	25	- 36%
Preventable	10	16	17	16	16	- 37%
Nonpreventable	6	11	7	9	9	- 33%

### Traffic Engineering

The Department employs a broad range of nontraditional strategies to help alleviate traffic problems. One of the most successful and important is the close working relationship traffic officers maintain with the Transportation Department. The ease by which the Department provides for the safe and efficient use of City streets depends greatly on the quality of traffic officer cooperation with engineers.

In 1994, 66 action requests were sent to Traffic Engineers by Traffic Officers asking for engineering modifications or alerting them of hazardous trafficway conditions.



## TRAFFIC ENFORCEMENT

### Traffic Enforcement Patrol

Enforcement is an integral part of the Department's accident prevention program. Traffic enforcement's objective is to minimize vehicular and pedestrian accidents and fatalities through uniform, consistent, and aggressive enforcement. Components include:

- \* Active, Visible Patrol
- \* Aggressive Enforcement in three categories -
  - Selective Enforcement,
  - Complaint Enforcement (Neighborhood Enhancement), and
  - Other Enforcement
- \* DWI Enforcement
- \* Hit and Run Investigation
- \* Parking Enforcement
- \* Post-accident Enforcement
- \* Other Enforcement Concerns

The Traffic Section's enforcement program is structured as follows:

- \* Selective Enforcement - The backbone of the enforcement program. Statistical data from accident reports is reviewed to identify high accident locations, and causes. Specific "Enforcement Areas" are identified and officers are assigned to concentrate on these areas.
- \* Complaint Enforcement (Neighborhood Enhancement) - These are areas that do not have the accident frequency to warrant selective enforcement. Primarily based on citizen input, these areas are identified and receive enforcement attention.
- \* Other - These are areas that have not been identified as either selective or complaint enforcement areas but are areas where officers have taken enforcement action for observed traffic violations.

## CARE Program

CARE, an acronym for Corridor Accident Reduction Enforcement, is the Department's selective enforcement program.

In conjunction with Bellevue Traffic Engineers, the Police Traffic Section identified corridors that have a high frequency of accidents and targets these areas for regular enforcement. The corridors are located in four general areas of the City:

- \* Central Business District
- \* Mid-lakes area
- \* Overlake area
- \* Crossroads

Traffic officers assigned to the CARE program are responsible for enforcement, monitoring traffic flow and making traffic engineering suggestions. While working the specific locations, officers will look for accident-causing violations, but enforce other violations as observed.

CARE anticipates that the physical presence of traffic officers at high-accident locations, combined with enforcement, will result in accident reduction.

In 1994, Traffic Officers on patrol worked a total of 27,558 hours. Subtracting the number of hours on calls for service, training, court, etc., left 11,118 hours of patrol. Patrol time is primarily directed at taking enforcement action in selective and complaint areas. An enforcement index is obtained by dividing the total number of enforcement citations by total patrol hours. Enforcement citations exclude post-accident and parking tickets. The Traffic Section's 1994 Enforcement Index was 1.6 citations per hour of patrol. All officers in the Section, including Parking PSO's, Detective, and TSO, worked 35,048 hours.

Traffic officers spent 40% of the total hours worked on patrol (total hours patrol divided by total hours worked). This compares to the previous 3-year average of 38%.

<b>TRAFFIC SECTION HOURS FOUR-YEAR COMPARISON</b>						
<b>Type</b>	<b>Year</b>				<b>Previous 3-year Average</b>	<b>% of Change 94 — 3-year Average</b>
	<b>1994</b>	<b>1993</b>	<b>1992</b>	<b>1991</b>		
Total Hours Worked by all Traffic Officers:	35,048	31,168				
Total Hours Worked, excludes Parking PSO, Detective, and TSO	27,558	25,448.5	30,274	30,340	28,687	- 4%
Total Patrol Hours	11,118	10,194.5	11,167.5	11,369.5	10,910	2%
Total % of Officer Time on Patrol	40%	40%	37%	37%	38%	5%
% Patrol Time (AI)	31%	31%	28%	30%	30%	3%
% Patrol Time (ENF)	47%	47%	55%	45%	49%	- 9%
Enforcement Index	1.6	1.5	1.4	1.5	1.5	6%
Total Vacation Hours	3,917	3,495.5	3,362.5	3,546.5	3,468	13%
Total Sick Hours	1,462	1,872.5	1,178	1,178	1,409	38%

## Enforcement Totals

The Department issued a total of 25,846 traffic citations (excluding DWI citations) in 1994. This was a 2% increase from 1993 and a 7% increase compared to the previous 3-year average.

In 1994, 21,987 enforcement citations were issued, a 2% increase from 1993. Enforcement citations are all citations excluding Traffic's post-accident, parking and DWI citations. The total was a 6% increase compared to the previous 3-year average. Traffic officers issued 80% of the enforcement citations in 1994.

TRAFFIC ENFORCEMENT FOUR-YEAR COMPARISON						
Type	Year				Previous 3-year Average	% of Change 94 — 3-year Average
	1994	1993	1992	1991		
Department Total*	25,846	25,216	23,214	24,005	24,145	7%
Total Enforcement Citations**	21,987	21,589	20,007	20,862	20,819	6%
Selective Enforcement	7,629	5,202	4,959	5,782	7,041	8%
Complaint Enforcement	8,439	8,482	7,238	8,684	8,135	4%
Other Enforcement	1,571	1,852	3,324	3,022	2,732	- 42%
Enforcement Citations By Traffic	17,639	15,536	15,521	17,488	16,181	9%
Enforcement Citations By Patrol	4,348	6,053	4,486	3,374	4,638	- 6%

\* Department total includes post-accident and parking citations.

\*\* Excludes Traffic's post-accident and parking citations.

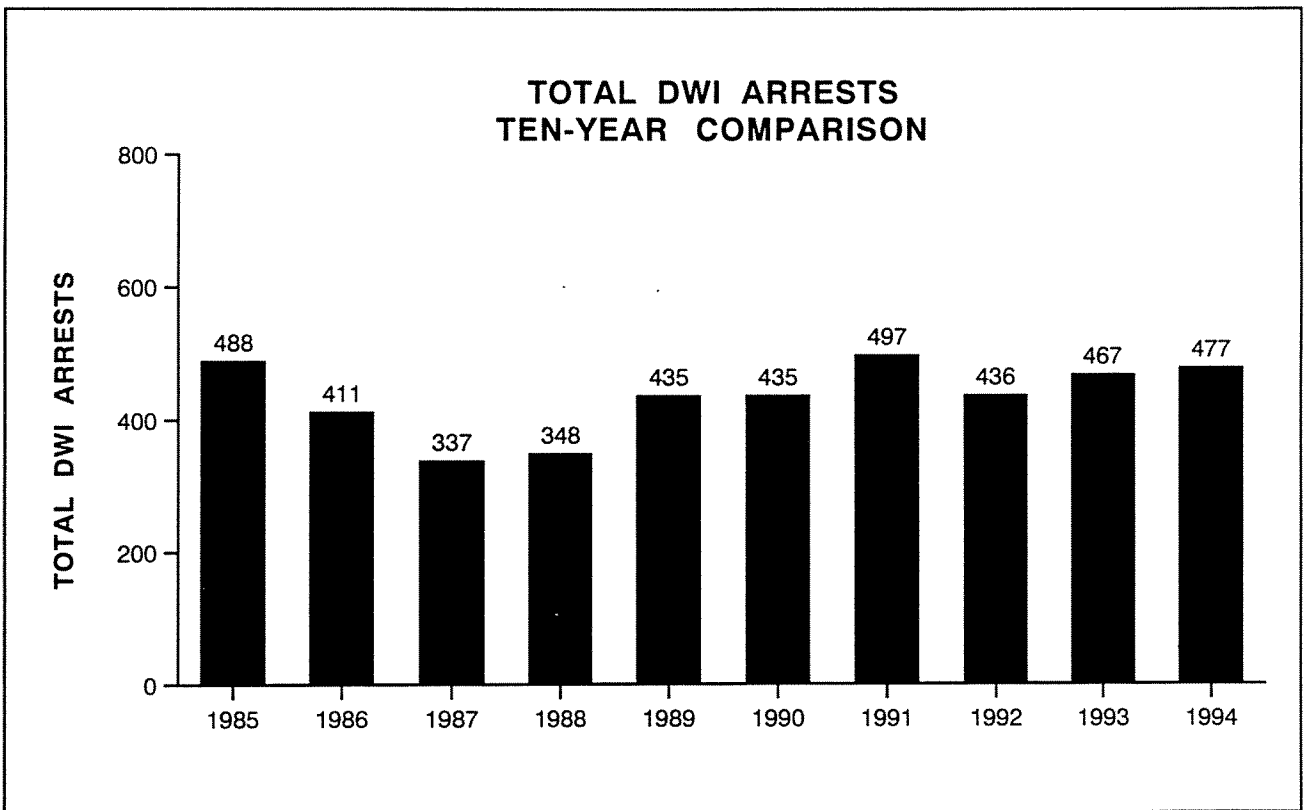
TRAFFIC CITATIONS 1984-1994				
Year	Total Citations	Total Enforcement Citations*	Total Citations By Traffic*	Total Citations By Patrol
1984	15,667	13,615	—	—
1985	15,597	13,509	—	—
1986	15,504	13,103	—	—
1987	16,983	14,353	—	—
1988	24,843	19,721	17,844	1,877
1989	22,561	18,414	16,344	2,070
1990	25,878	21,899	20,012	1,887
1991	24,005	20,862	17,488	3,374
1992	23,214	20,007	15,521	4,486
1993	25,216	21,589	15,536	6,053
1994	25,846	21,987	17,639	4,348

\* Total excludes post-accident and parking citations.

**DWI Enforcement**

477 DWI arrests were made in 1994, a 2% increase compared to 1993. In 1990, Eastside Police Departments joined together to conduct DWI emphasis patrols. This anti-DWI strategy continued in 1994 with emphasis patrols accounting for 151 DWI arrests. There has not been an alcohol-related traffic fatality in Bellevue since 1987.

<b>DWI ENFORCEMENT FOUR-YEAR COMPARISON</b>						
<b>Type</b>	<b>Year</b>				<b>Previous 3-year Average</b>	<b>% of Change 94 — 3-year Average</b>
	<b>1994</b>	<b>1993</b>	<b>1992</b>	<b>1991</b>		
Total DWI Arrests	477	467	436	497	467	2%
Total DWI Arrests By Traffic	196	116	125	184	142	27%
Total DWI Arrests By Patrol	281	351	311	313	325	- 25%



### Hit and Run Investigations

The Section's Traffic Accident Detective conducts the majority of the Hit and Run investigations. In 1994, 35 Hit and Run cases were closed with arrest and 122 were closed with civil arrangements.

HIT AND RUN INVESTIGATIONS FOUR-YEAR COMPARISON						
Type	Year				Previous 3-year Average	% of Change 94 — 3-year Average
	1994	1993	1992	1991		
Total Hit and Run Investigations	292	** 186	147	151	161	81%
Public Street	172	170	147	147	154	12%
Private Property	120	16	0	4	7	1,714%
Closed Arrest	35	36	36	52	42	- 17%
Closed Civil	122	42	50	25	39	212%
Inactive	98	85	61	70	72	36%

\* Effective January 1, 1990, Hit and Run investigations were limited according to Department accident investigation policy.

\*\* Includes 13 accidents that came in after January 10, 1994, that occurred in 1993.

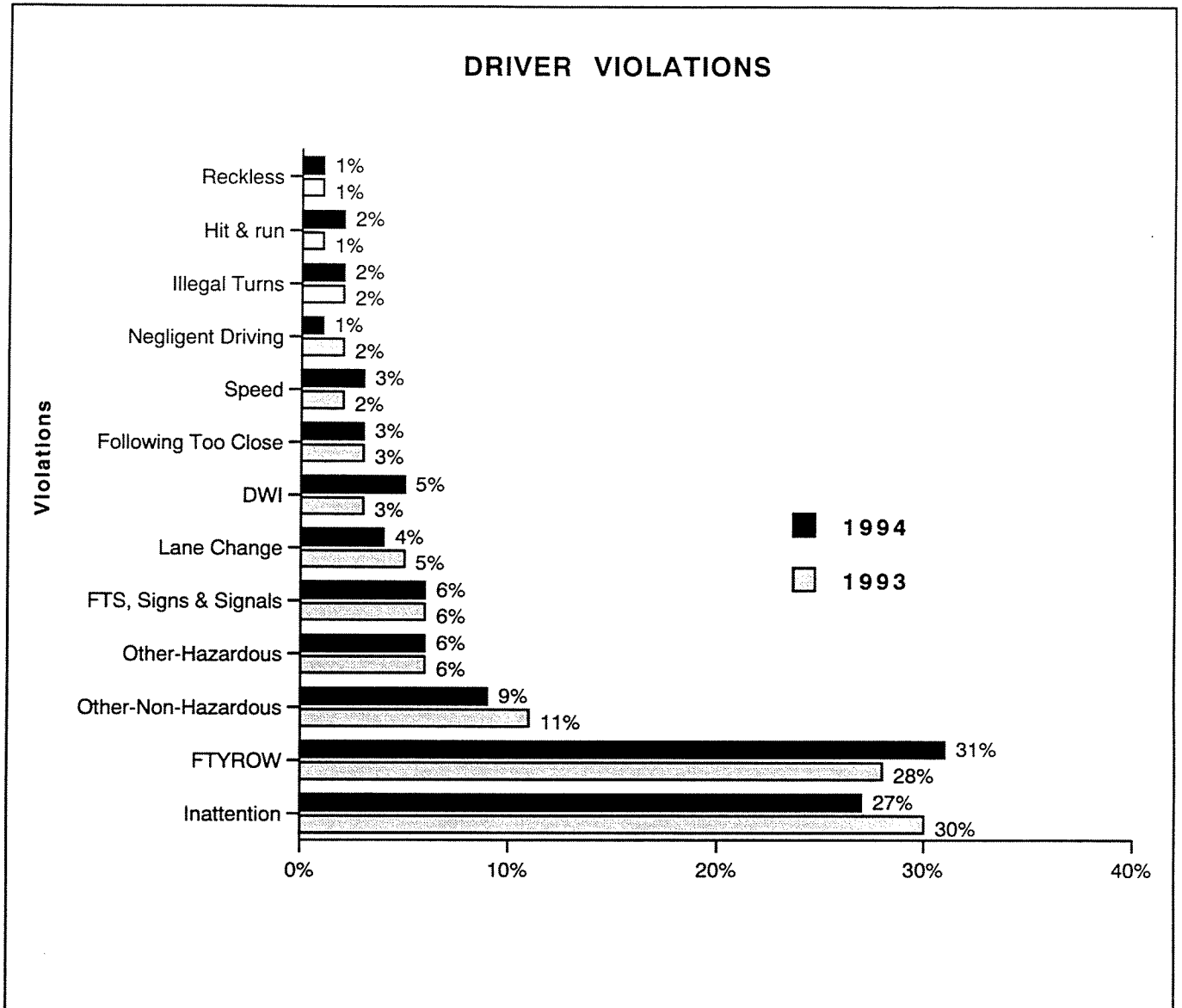
### Parking Enforcement

Two full-time Police Support Officers (PSO) are assigned to parking enforcement. Duties include enforcement of residential parking zone violations, improper parking, abandoned vehicles, etc.

PARKING CITATIONS FOUR-YEAR COMPARISON						
Type	Year				Previous 3-year Average	% of Change 94 — 3-year Average
	1994	1993	1992	1991		
Total Parking Citations	2,308	2,231	1,810	2,010	2,019	14%

## Driver Violations

Percentages of driver violations for all accidents investigated in 1992-1994 are listed below. This is the total number of post-accident offenses and are listed by the type of violation. The highest percentage of violations for all accidents in 1994 was "driver inattention" with 27%. The next highest was "failure to yield the right-of-way" with 26%.



### Post-accident Enforcement

Post-accident enforcement is conducted upon completion of an accident investigation. If a charge is substantiated, the responsible person is cited via summons for the violation determined as a result of the investigation. In 1994, 1,551 post-accident citations were issued, a 19% increase compared to the previous 3-year average.

POST-ACCIDENT CITATIONS FOUR-YEAR COMPARISON						
Type	Year				Previous 3-year Average	% of Change 94 — 3-year Average
	1994	1993	1992	1991		
Total Post-accident Citations	1,551	1,396	1,397	1,133	1,308	19%

### Other Enforcement

The verbal warning is often the traffic officer's appropriate enforcement action. The Traffic Section does not keep statistics on verbal warnings issued.

Traffic officers take the appropriate action of criminal law violations and work closely with the Patrol Section. During 1994, Traffic made 84 misdemeanor arrests and 29 felony criminal arrests.

CRIMINAL (NON-TRAFFIC) ARRESTS FOUR-YEAR COMPARISON						
Type	Year				Previous 3-year Average	% of Change 94 — 3-year Average
	1994	1993	1992	1991		
Misdemeanor Arrests	84	46	65	104	72	17%
Felony Arrests	29	11	15	9	12	141%

## Traffic Safety Program

The Traffic Section has included a Traffic Safety Officer position since 1992. This officer works closely with schools, various organizations and other city departments to develop and present Traffic safety education programs. Topics for these presentations cover aspects of transportation safety. Emphasis is placed on safety education for youth and seniors and presentations are given throughout the year.

Some of the subjects and duties of the Traffic Safety Officer include:

- Instruct pedestrian and bicycle safety classes to children and seniors.
- Instruct school safety patrols in proper safety procedures.
- Assist as an instructor for seniors defensive driving classes.
- Presented safety lectures at high school education classes.
- Develop safety programs such as "The Coffee Cops" program, where citizens receive coffee coupons for good pedestrian practices.
- Work with the City Transportation Department to present safety demonstrations for programs such as, "Siggy City" and the Pedestrian Safety Program.
- Serve as a member of the Bellevue School District Safe Walk Committee.
- Serve as representative of the Department at Neighborhood Enhancement Program meetings.
- Develop traffic related training for the Police Department.



During 1994 the Traffic Safety Officer gave 136 presentations to various groups, and spoke to more than 10,000 people. A breakdown of the groups along with the number of presentations and the number of attendees is recorded below.

	<u># of Presentations</u>	<u># of Attendees</u>
Daycares and Schools	81	3,378
College Groups	3	132
Fairs and Exhibits	18	5,434
Police In-service Training	4	39
Other	<u>30</u>	<u>1,601</u>
Total	136	10,584

## CALLS FOR SERVICE

Traffic officers responded to a total of 7,197 calls for service, excluding investigated accidents in 1994, a 10% increase compared to 1993.

- 1,518 Traffic Complaints: traffic direction, assisting motorists, etc.
- 1,933 Traffic Assists: assisting at accidents, impounding vehicles during arrest, etc.
- 1,411 Patrol Assists: traffic officers responding to assist patrol at alarms, backups, etc.
- 2,335 Parking Complaints: complaints of illegal, improper parking.

<b>CALLS FOR SERVICE FOUR-YEAR COMPARISON</b>						
<b>Type</b>	<b>Year</b>				<b>Previous 3-year Average</b>	<b>% of Change 94 — 3-year Average</b>
	<b>1994</b>	<b>1993</b>	<b>1992</b>	<b>1991</b>		
Total Calls	7,197	6,481	6,207	6,392	6,360	13%
Traffic Complaints	1,518	1,201	1,362	1,298	1,287	18%
Traffic Assists	1,933	2,101	1,873	1,837	1,937	0%
Patrol Assists	1,411	1,579	1,006	1,305	1,296	9%
Parking Complaints & TSR's	2,335	1,600	1,966	1,952	1,839	27%

## SPECIAL EVENTS

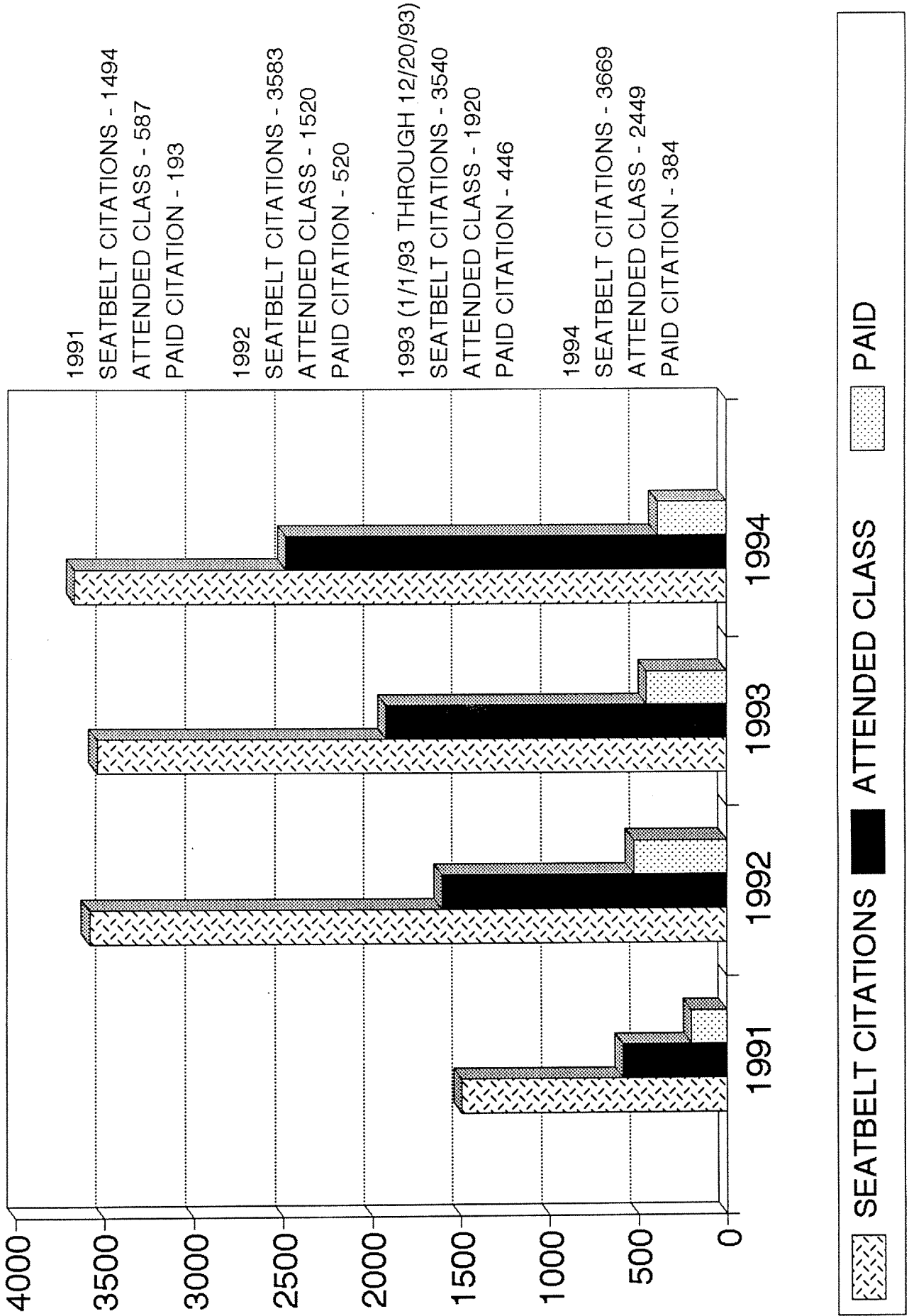
As in past years, the Traffic Section continued to plan and coordinate traffic safety at special events during 1994 including:

- Art Grazing
- Arts and Crafts
- Sea Fair Boat Launch
- Safeway Fun Day
- Success Run
- Seafair Balloon Parade
- Eastside Community Street Fair
- HS Homecoming Parades
- 4th of July
- Shriners Parade

## **SAFETY RESTRAINT USE**

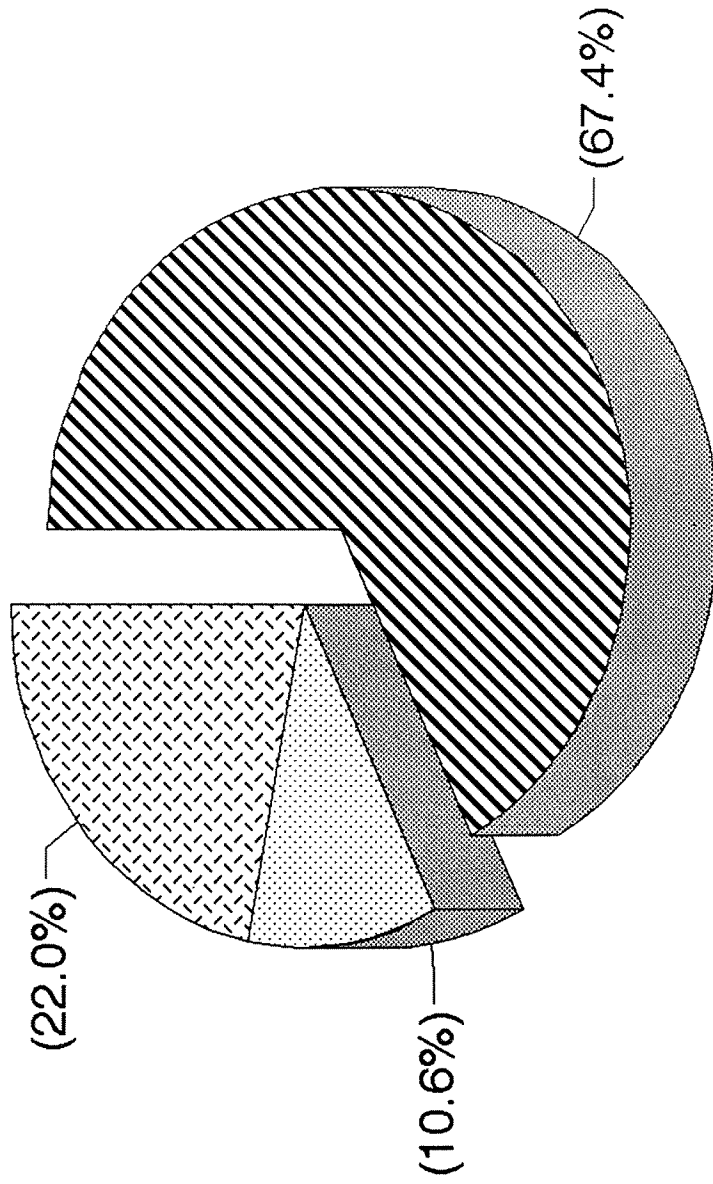
The Department was recognized for outstanding performance in seat belt education and enforcement during 1994. A \$10,000 Washington Traffic Safety Commission (WTSC) grant was received to support seat belt education and enforcement programs. A total of 2,487 persons attended the Department's seat belt education class in 1994 compared to 1,920 persons in 1993.

# SEATBELT CITATIONS (NOI'S)



# SEATBELT CITATIONS (NOI'S)

1994

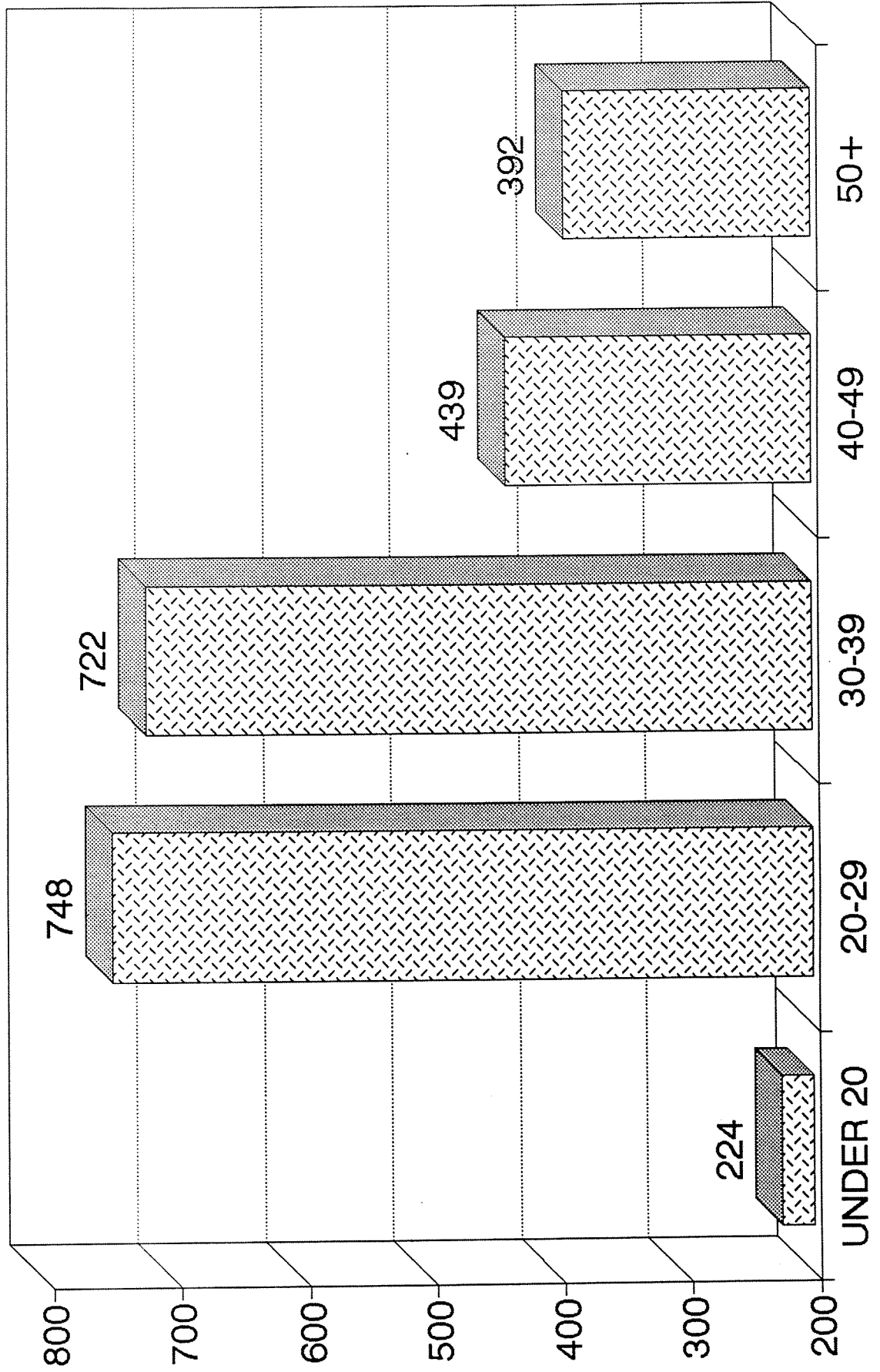


TOTAL - 3669  
PAID - 384  
CLASS - 2449  
OTHER - 798

# AGE BREAKDOWN

## 1994 CLASSES

NUMBERS INCLUDE 38 GUESTS



ANNEX A  
SUMMARY

1994 ANNUAL TRAFFIC STATISTICS

Citations

	<u>1993</u>	<u>1994</u>	<u>% Change</u>
Enforcement - Traffic	15,536	17,639	13%
Enforcement - Patrol	6,053	4,348	- 28%
Enforcement - Total	21,589	21,987	2%
Accident Citations	1,396	1,551	11
Parking Citations	2,231	2,308	3%
Total Citations	25,216	25,846	2%
DWI Citations	467	477	2%

Accidents Investigated

	<u>1993</u>	<u>1994</u>	<u>% Change</u>
City Street	1,563	1,640	5%
Private Property	61	170	178%
Traffic	1,301	1,467	13%
Patrol	323	343	6%

Comparative Breakdown by Year

	<u>1993</u>	<u>1994</u>	<u>% Change</u>
Number of Injury Accidents	603	658	9%
Number of Persons Injured	843	926	10%
Number of Pedestrian Accidents	32	42	31%
Number of Bicycle Accidents	40	35	- 12%
Number of Fatality Accidents	1	2	100%
Number of Deaths	1	2	100%
Number of Hit and Run Accidents	173	292	69%
Number of DWI Accidents	53	60	13%
Monetary Loss to Date	\$4,722,788	\$5,853,964	24%

## ANNEX B

### 1994 EASTSIDE DWI TASK FORCE HOLIDAY EMPHASIS

Attached are the statistics for the fourth annual Christmas/New Year's Holiday Eastside Police joint DWI emphasis patrols.

The 1994 Holiday emphasis began on December 14th with a press release. Local media provided TV, radio, and newspaper coverage. Eastside agencies participating on December 14 included Bellevue, Redmond, Kirkland, Bothell, Issaquah, Clyde Hill, Medina, Mercer Island, and WSP. WSP experimented with a command post at their Roanoke Street office. The command post was shared by a number of agencies in King County and is designed to help coordinate and expedite officer's time with a DWI arrest. The command post was a success.

We hope to develop the command post concept with WSP on the Eastside in 1994. Joint emphasis patrols occurred on a total of nine days from the 15th to the 31st. Results were as follows:

Number of DWI Arrests	54
Number of Traffic Contacts	778
Number of Citations Issued (non-DWI)	94
Number of Other Arrests	29

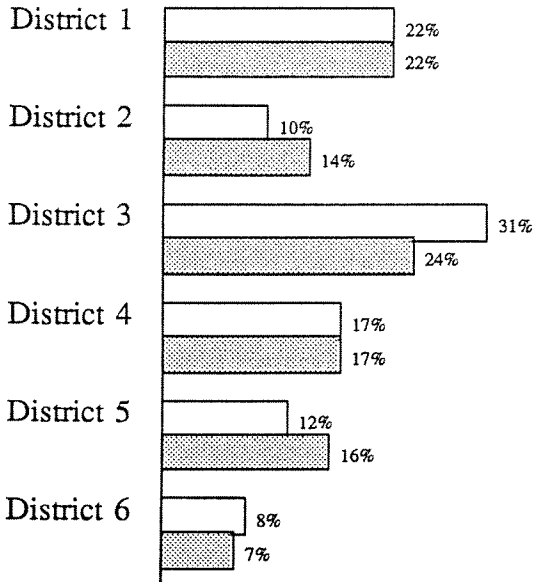
Between December 15th and December 31st, a total of 22 DWI arrests were made in Bellevue by our officers.



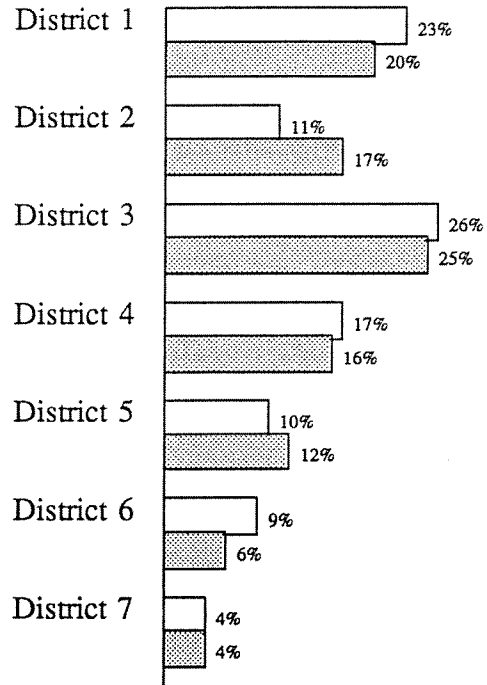
ANNEX C

NUMBER OF ACCIDENTS COMPARED WITH  
NUMBER OF CITATIONS ISSUED BY DISTRICT (BY %)

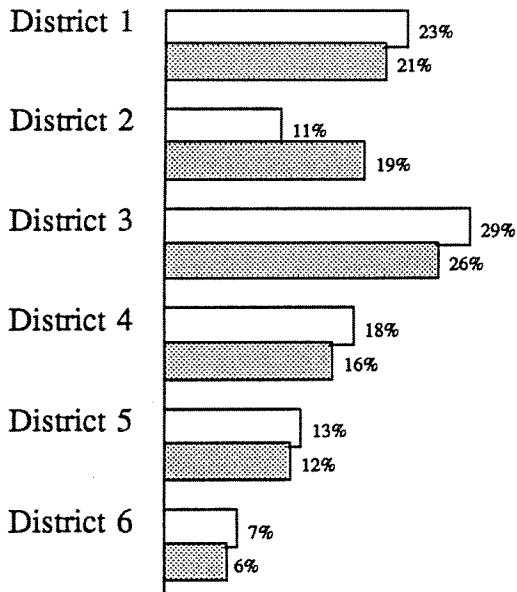
1991



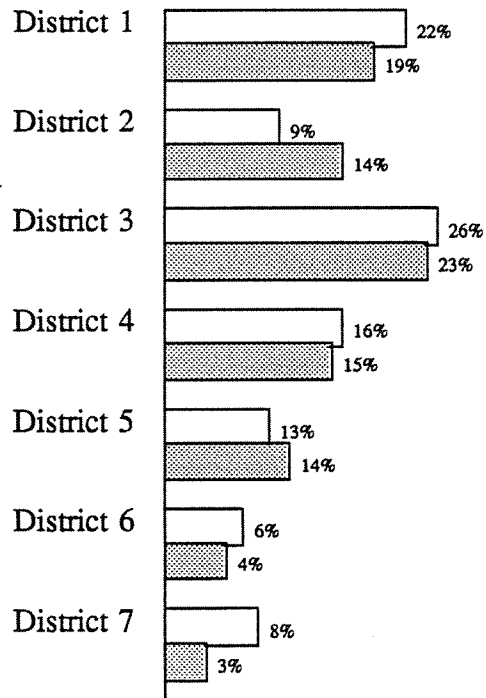
1993



1992



1994



□ Accidents  
▨ Citations

