

1977 POLICE DEPARTMENT ANNUAL REPORT

City of Bellevue, Washington

D.P. Van Blaricom

Chief of Police



City Council

Milford Vanik, Mayor
Roy Ferguson
Richard M. Foreman
Thomas J. Kraft
Don Lemieux
Nancy L. Rising
Gary A. Zimmerman

Acting City Manager

Richard Cushing

Civil Service Commission

Paul Hosoda, Chairperson
Laverene Hall
John Denney
Mary Lee Landerholm
Hank Curran

Police Annual Staff

Major Roger Davis
Captain Dan Hansen
Walt Shigley, General Services
Frank Anderson, Photographer
Kelly Smith, Graphics
Yvonne Gooley, Printing
Brian Walsh, Printing



Chief's Message

Mr. R. C. Cushing, Acting City Manager
City of Bellevue, Washington

Dear Mr. Cushing:

The 1977 Annual report of the Bellevue Police Department is submitted herewith and I wish to begin by expressing my appreciation to the City Council for actively supporting their police in our endeavors to maintain high quality service in the City of Bellevue.

After a long period of low administrative priority, in which the police department was allowed to fall farther and farther behind the concurrent growth of our rapidly expanding community, the City Council acted to reverse that trend. Accordingly and after independently examining the fact of the public's demand for police services versus the department's capacity to adequately respond, the City Council authorized a greatly needed personnel increase as a start toward providing resources commensurate with our responsibilities. As a result, the citizens of Bellevue will be better served and that is what we all want!

Although serious crime did increase in 1977 by 1% over the preceding year (as I had previously advised we should expect, because of our diminished ability to respond with too few personnel), there were several gratifying successes that should be noted. First, was that we significantly impacted the priority crimes against persons and the overall crime increase was primarily attributed to crimes against property, for which we had necessarily assigned a lower priority. Second, was that an independent evaluation of our response to juvenile crime over the period of 1974 - 1976 showed a marked increase in positive attitudes toward the police by both arrested juveniles and their parents beginning in 1976 - that fact is consistent with our first full year of operation under the service philosophy of neighborhood/team policing and was described by the evaluator as "... attest(ing) to the highly professional bearing and quality of Bellevue Police Officers". Third, we used the personnel increase that we were granted to further expand our hiring of minority officers and in the 3 years of pursuing an aggressive affirmative action employment policy, the Bellevue Police Department has progressed from no minorities in-service to 21% of our total force. Fourth, and perhaps most significant of all, another year passed without a Bellevue police officer ever having found it necessary to shoot a person in the performance of his or her duties and this in spite of two well-publicized armed confrontations in 1977 that were settled with professional restraint instead of gunfire.

The men and women of the Bellevue Police Department will continue to do their best to enhance public safety in the City of Bellevue during 1978 and they join me in again expressing our thanks to the City Council for their insight into the proven needs of the police to be adequately funded, if they are to perform as expected - I am sure that the public appreciates that too!

D. P. Van Blaricom



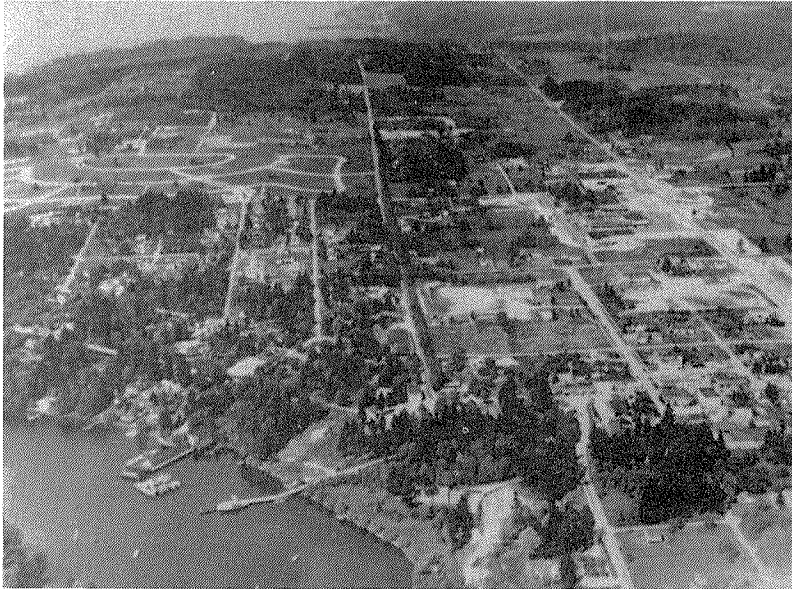
Chief of Police



Contents

Staff Page	i
Chief's Message	ii
Contents	
Introduction	2
Organization Chart	3
Major Crimes Make News	4
Budget—Personnel	5
Part One Crimes	6
Burglaries	7
Assaults	8
Robberies	9
Rape	10
Vice-Narcotics Unit	11
Vice-Narcotics Unit Statistics	11
Hazardous Device Unit	12
Hazardous Device Statistics	12
K-9 Unit	13
Traffic Division	14
Traffic Division Statistics	15
Headquarters	16
Crime Prevention Volunteers	17
Cadet Unit	18

Bellevue in 1950



Bellevue in 1976



Introduction

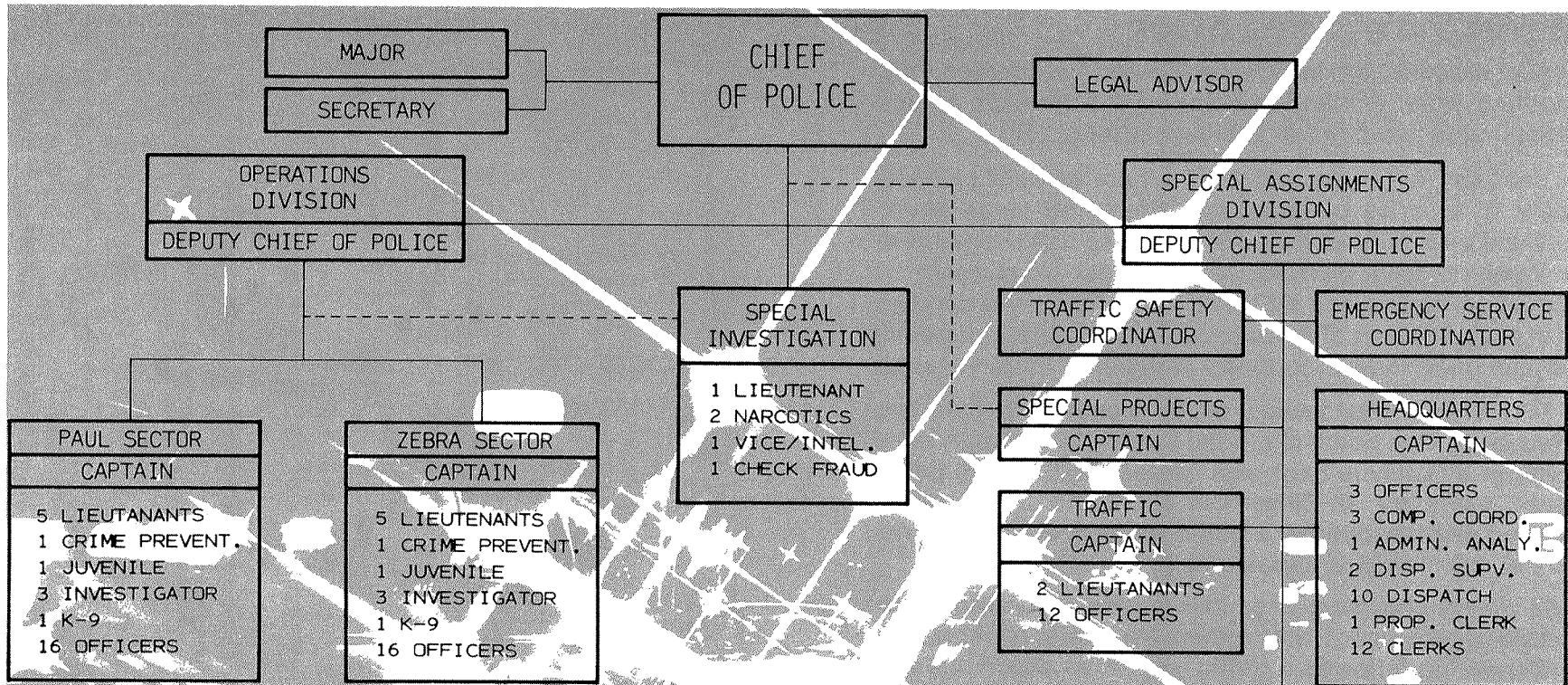
Aaron Mercer became the first known resident of what has since become the State's fourth largest city when he moved to present-day Bellevue in 1863. He built his cabin on Mercer Slough near today's City Hall site but never suspected that some 114 years later, his great-great-grandson D. P. Van Blaricom would be the Chief of Police in the same area that he had pioneered.

From a modest beginning Bellevue has grown into a major metropolitan area and one of the most desirable cities in the Northwest in which to live and work. It seems that in the early 1900's Bellevue was largely a lumber producing community in which three large logging camps were established employing several hundred men. As the land was cleared, farms producing strawberries emerged. By 1938, small businesses were open in Bellevue and business lots on 104th Avenue NE were selling for \$1,000.

Bellevue was incorporated on March 31, 1953 with a population of 5,950 and an assessed valuation of \$5,600,000. In 1977 the city had a population of 68,500 and an assessed valuation of \$1,302,321,121.

The Police Department has grown with the city and due to a progressive administration we have changed with the community. The department's neighborhood/team policing program and a proactive crime prevention program have had a direct impact on crime, however, we are still at the lowest number of police per population and at the lowest per capita cost for police service of any city in the metropolitan area. The city council acted on the department's request to add five officers in 1978 and the community will be better served with this addition.

It is hoped that this report will prove informative in depicting the department's efforts to combat crime during 1977 and thereby make Bellevue a more liveable city for its citizens.



BELLEVUE POLICE DEPARTMENT 1977

D.P. VanBlaricom
CHIEF OF POLICE

CIVILIAN PERSONNEL

LEGAL ADVISOR.....	1
ADMINISTRATION ANALYST....	1
DISPATCH SUPERVISOR.....	2
DISPATCHER.....	10
SECRETARY.....	1
PROPERTY CLERK.....	1
CLERK.....	12
	28

TOTAL
PERSONNEL
118

POLICE (LEFF) PERSONNEL

CHIEF OF POLICE.....	1
DEPUTY CHIEF OF POLICE..	2
MAJOR.....	1
CAPTAIN.....	5
LIEUTENANT.....	14
POLICE OFFICER.....	64
COMPLAINT COORDINATOR...	3
	90

Major Crimes Make News

Sexual assaults, terrorist bombings and a deadly street shooting were included in some of the dramatic crimes which made headlines in Bellevue during 1977.

In February a 17 year old high school student pleaded guilty to a series of rapes and attempted rapes which involved over nine victims. He has since been sentenced to Western State Hospital as a sexual psychopath. In August police arrested a 43 year old man who was suspected in up to 50 cases of sexual assault on six children. He too pleaded guilty and is confined at Western State Hospital.

In May a Northwest radical group planted bombs in two area banks. One bomb exploded in a neighboring city but a bomb in a Bellevue bank was defused by Bellevue bomb squad members. In November the same organization claimed responsibility for a bomb which damaged several cars at a Bellevue auto dealership.

A 62 year old business executive was shot to death in the middle of rush hour traffic during the month of February. The shooting followed a traffic dispute in which one car swerved in front of another. Bellevue Police arrested a 45 year old man in connection with the case. He was found guilty of manslaughter but is appealing the decision.

In December three youths burglarized a hardware store and stole numerous guns and ammunition. The Bellevue Tactical Arms Group, under the personal direction of Chief Van Blaricom, surrounded a house where they had barricaded themselves. After five hours the three were taken into custody without a shot being fired.

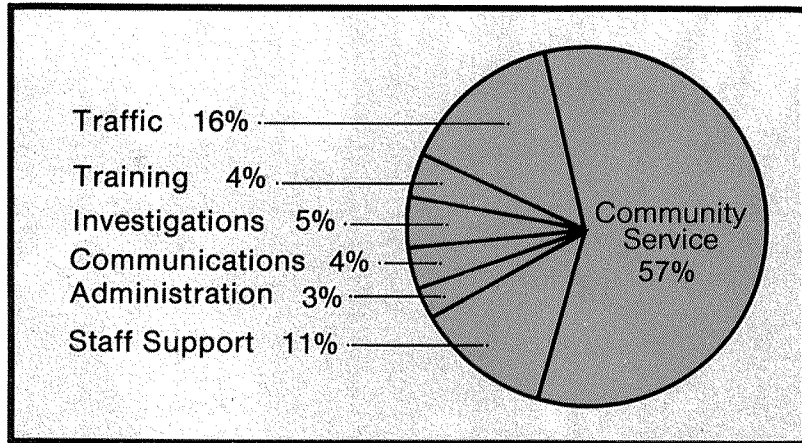
The same month two armed youths were arrested following a stakeout and highspeed chase. During the stakeout a suitcase containing a fake bomb was found. Both had planned on robbing a department store in a neighboring city.



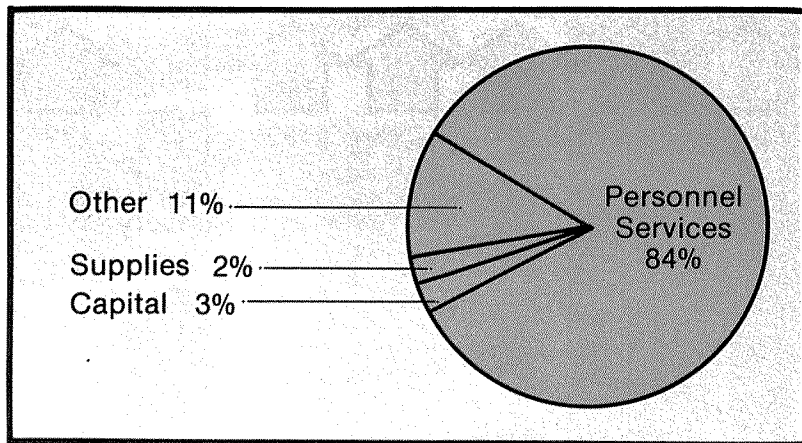
City of Bellevue
Police Department
1977 Budget

\$2,678,582

Allocations

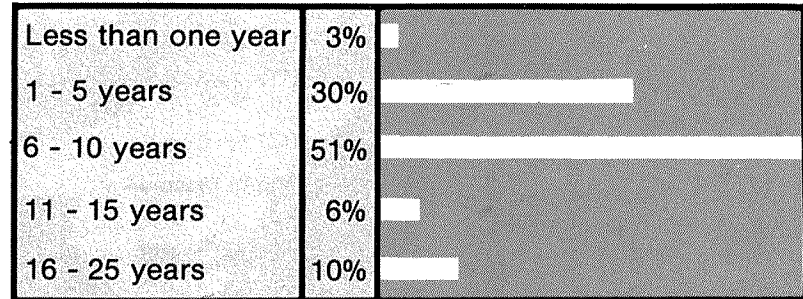


Expenditures

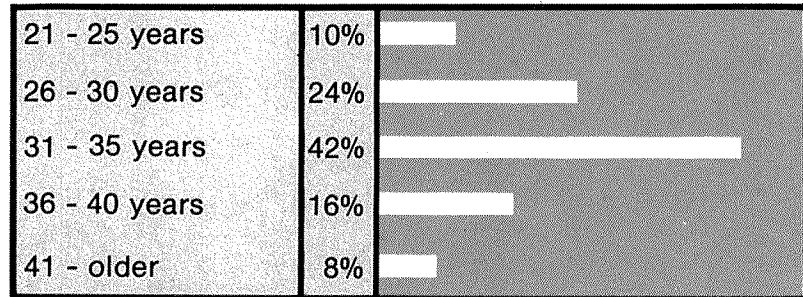


City of Bellevue
Police Department
Personnel

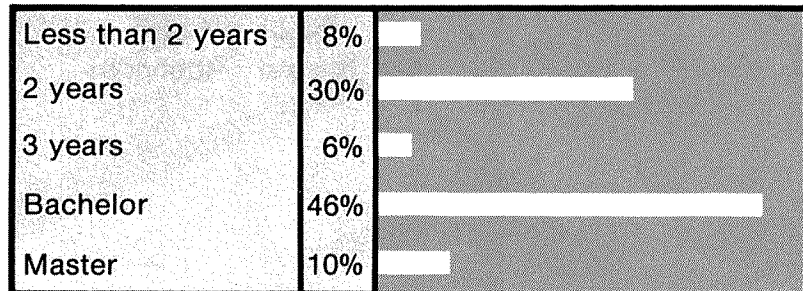
Years of Service



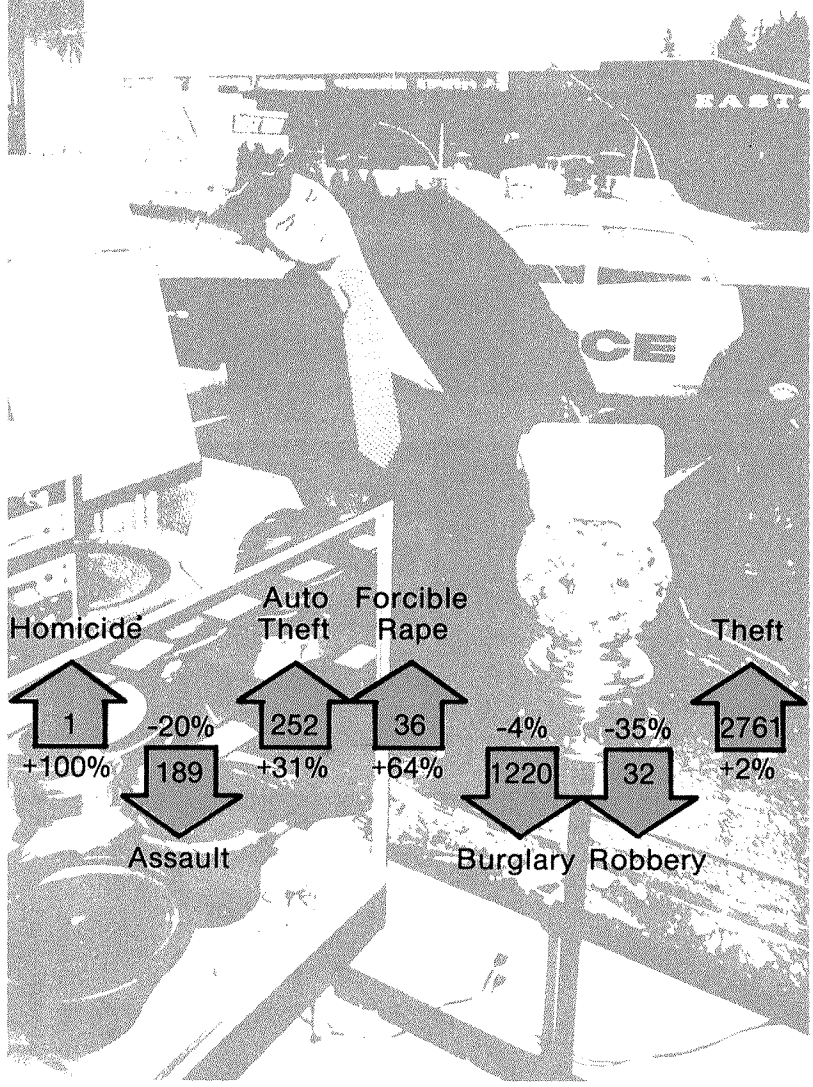
Age Distribution



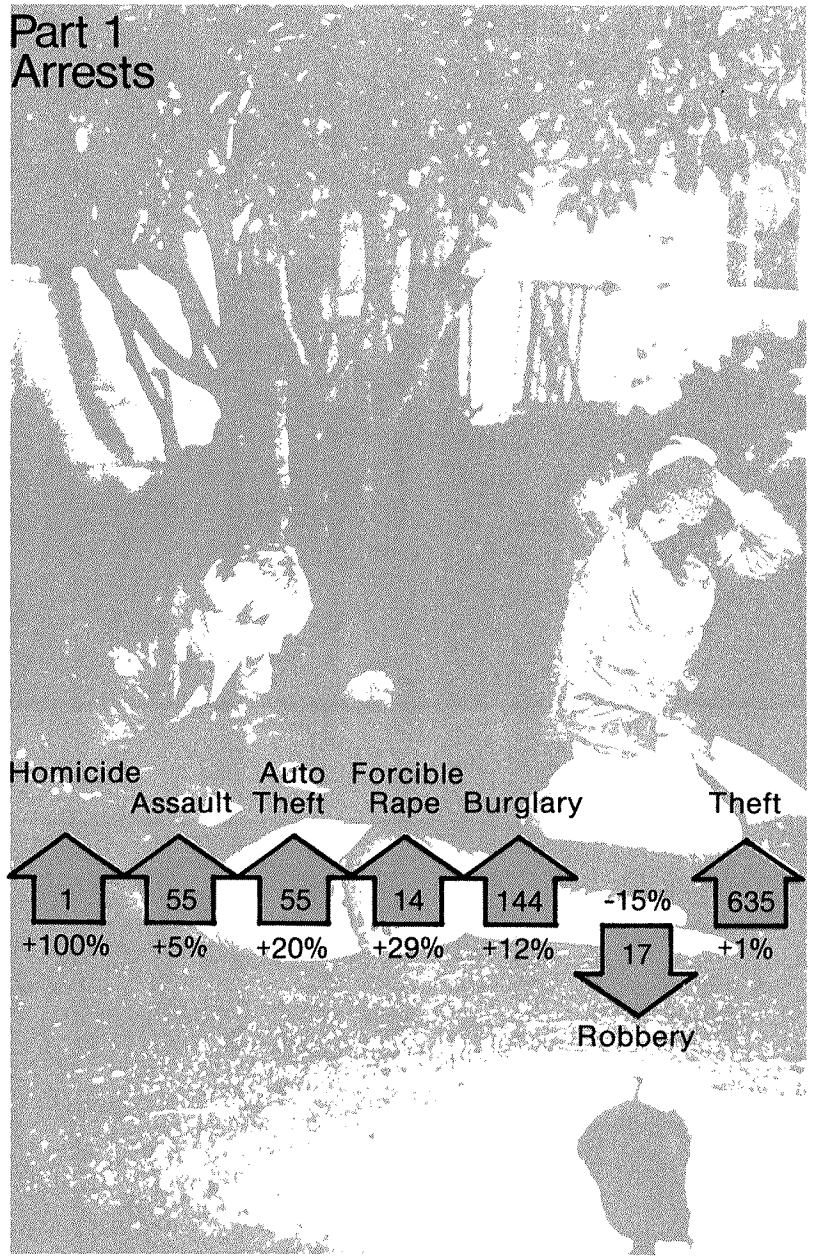
College Education



Part 1
Crimes
As Reported To The FBI



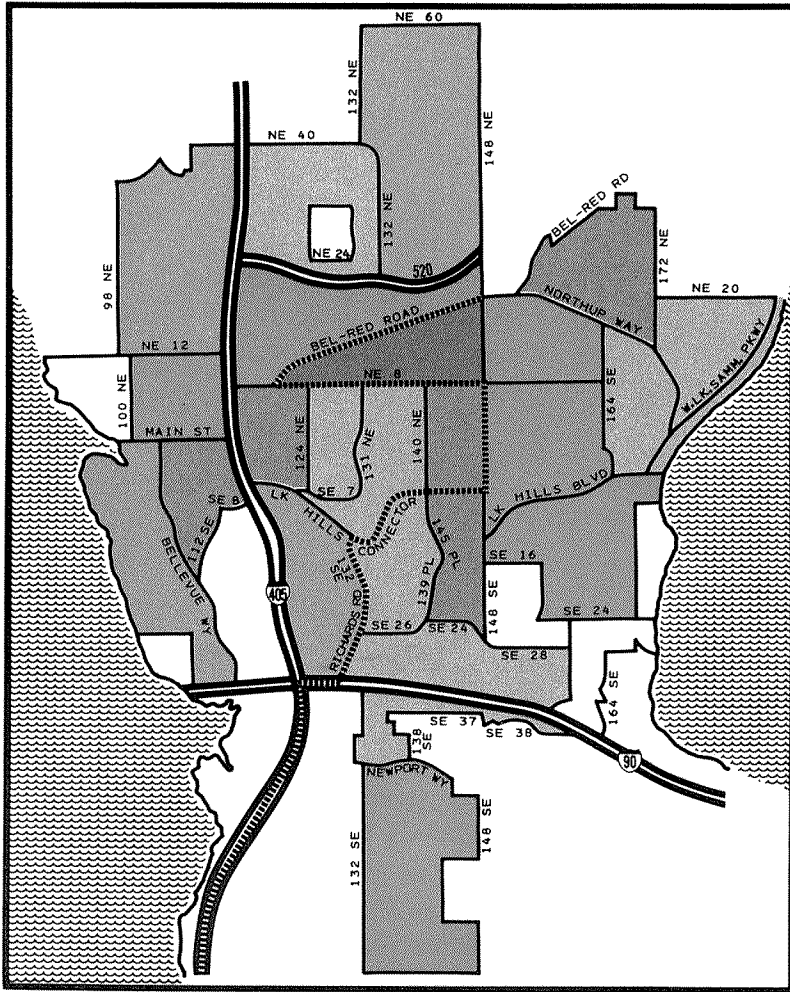
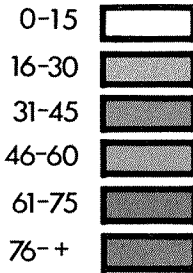
Part 1
Arrests



**Bellevue Police
Department
1977**

BURGLARY

By Geographical Areas



Burglary

	<u>1976</u>	<u>1977</u>	<u>Change</u>
	1,269	1,220	-4%

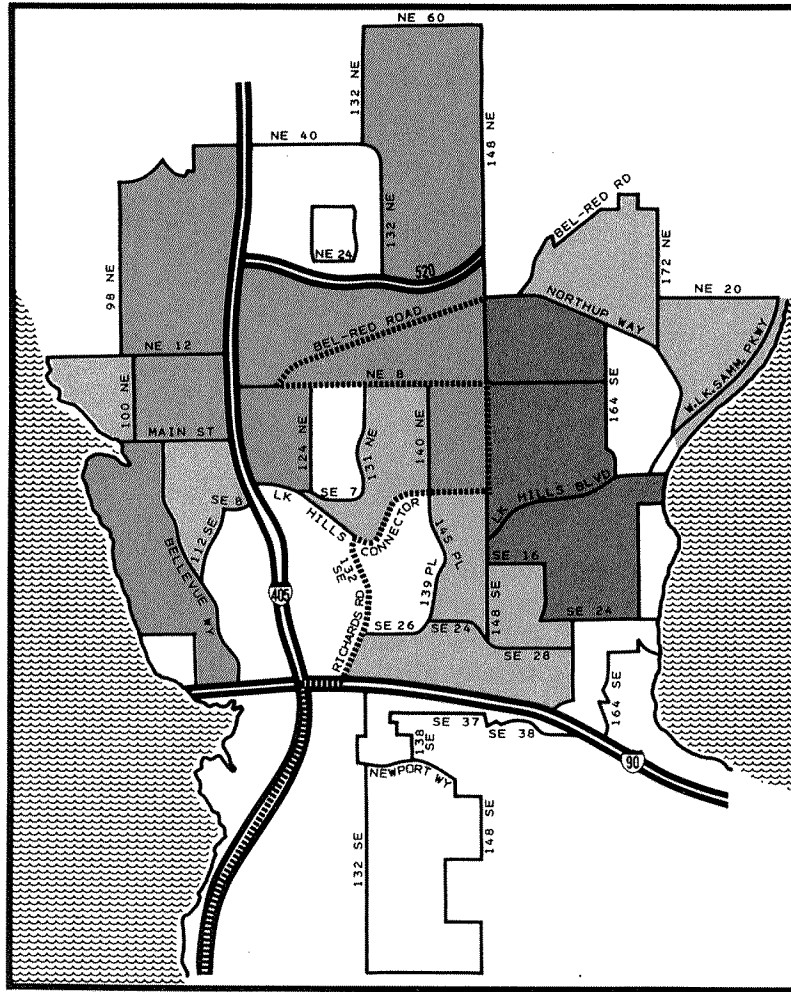
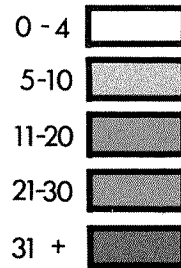
This map reflects the total burglaries (residential, commercial, and attempts) which were reported in the City of Bellevue during 1977. The high rate of burglaries in commercial areas is partially attributable to the fact that statistics will reflect four separate burglaries if a thief enters four different offices in a single office building.

The continuing decrease in this crime is the result of a focus upon proactive prevention programs that "harden the target," and while the scale of the decline is starting to flatten, it is expected to take another sharp downturn in 1978, as a commercial crime prevention program is initiated similar to the one which was successfully introduced into the residential neighborhoods earlier.

**Bellevue Police
Department
1977**

ASSAULTS

By Geographical Areas



Part 1 Assaults	1976	1977	Change
	237	189	-20%

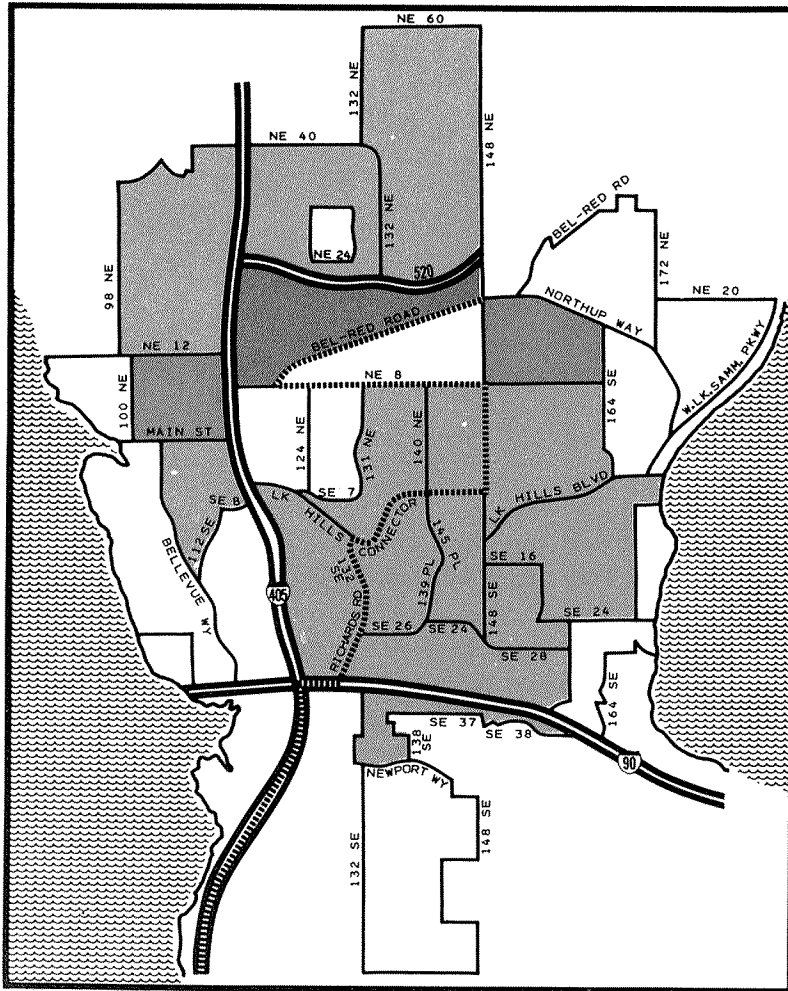
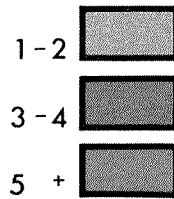
Because of the potential for injury or death, this map not only reflects the 189 actual assaults which occurred during 1977, but includes 88 threatened assaults too.

The continuing decrease in this potentially deadly crime is the result of responding officers applying their training in crisis intervention techniques to defuse incidents from escalating into further confrontations between disputants.

**Bellevue Police
Department
1977**

ROBBERIES
(Including Attempts)

By Geographical Areas

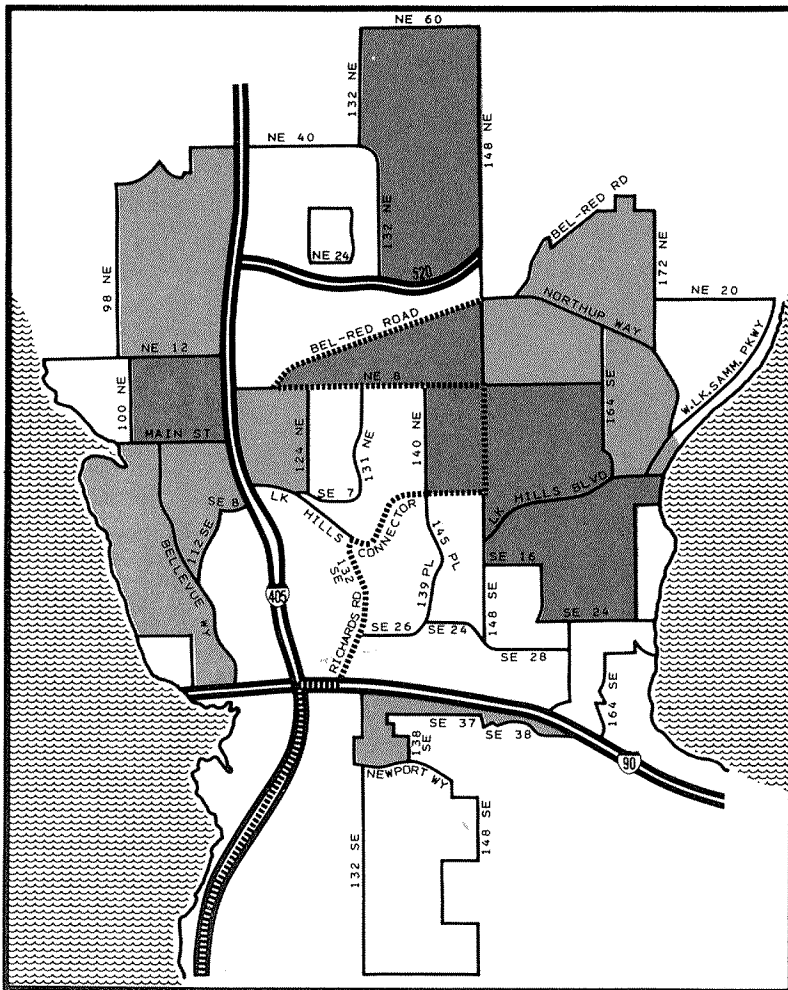
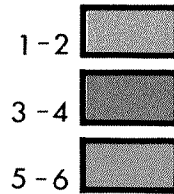


Robbery	1976	1977	Change
	49	32	-35%

As indicated, robbery occurs primarily in the commercial areas of the city rather than the residential areas. After the increase in robbery during 1976, the chief ordered a greater emphasis upon this highly dangerous crime. A reduction in its occurrence has accordingly resulted. With the implementation of the commercial crime prevention program, it is expected to decrease further during 1978, as the business community becomes better informed as to effective deterrent measures and awareness of the problem.

**Bellevue Police
Department
1977**

**RAPES
(Including Attempts)
By Geographical Areas**



Rape	1976	1977	Change
	22	36	+64%

As depicted on this map of the city, rape can occur anywhere, but is more prevalent in the high population areas.

The increase in rape is believed to be a result of the greater awareness of victims that their needs will be met by a more socially conscious criminal justice system and consequently, more persons are reporting the crime than before. The victims of this crime are also becoming more aware of the necessity of reporting the crime, as a rapist seldom commits only one rape unless apprehended. While these developments do not necessarily reflect that more rapes are actually occurring, the result does require a significant increase in time that must be spent by the Police investigating this high priority crime.

Narcotics Unit

As indicated in this graph, marijuana remains the highest in seizure value of drugs within the city, but the more startling increases in 1977 were in heroin and cocaine abuse. It is indicated that major cocaine dealers reside on the Eastside and heroin dealers are increasingly moving into our area. While marijuana seizures are high, it must be noted that trends towards the more exotic types of marijuana which contain a higher THC level (such as Columbian and Thai-stick marijuana) have driven the cost of the old commercial \$10 lid up to \$50-\$200 for the same lid.

Example #1 - An Eastside businessman was arrested after delivering over a half pound of cocaine, street value of over \$35,000, to the narcotic unit. His cost for the drug was estimated at \$12,000 to \$15,000.

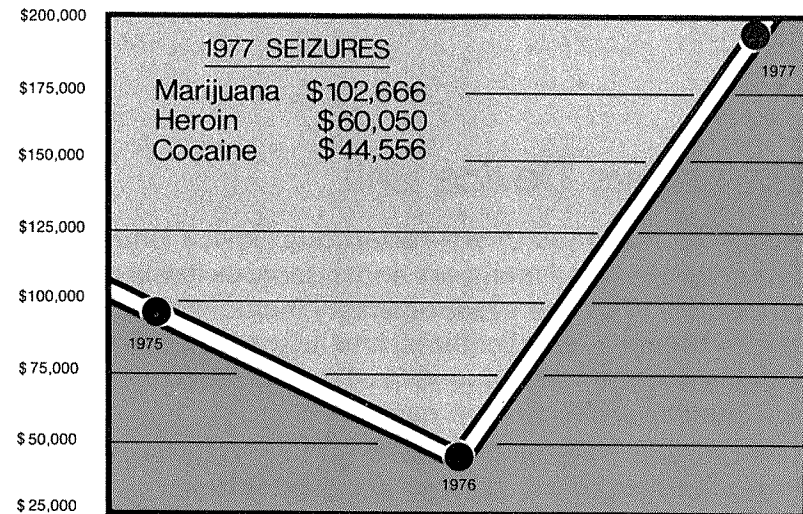
Example #2 - During another narcotics investigation, a prostitution and narcotics distribution system was uncovered which resulted in the arrest of two pimps who were promoting prostitution and in possession of heroin and cocaine valued at over \$60,000 on the street.

Example #3 - A complaint from parents that heavy narcotic traffic was being conducted at a local high school led the narcotics unit to Bellevue's largest seizure/buy of over 100 pounds of commercial grade marijuana-street value of over \$50,000.

During 1977 the Legislature passed several new laws which have assisted the narcotics unit. One such law allows law enforcement to seize vehicles which are used for narcotics traffic. The City of Bellevue was first to act under the new statute and seized over \$18,000 worth of vehicles.

For the coming year, the narcotics unit will monitor closely both the heroin and cocaine traffic. Intelligence information indicates that numerous drug violators exist in the city who cannot be dealt with at this time due to lack of manpower. If major heroin and cocaine traffickers find the

Narcotic Seizure Trends



Eastside to be an easier area in which to operate, then those types of crimes that travel with hard narcotics will become entrenched around us. It is well established that murders are committed during drug transactions, that robberies, burglaries, acts of prostitution and other crimes are committed to obtain money for drugs and that organized crime soon becomes involved.

Hazardous Device Unit Summary 1976-1977


Hazardous Device Unit

Since the inception of the Hazardous Device Unit 1971, it has grown to three members and numerous items of safety equipment. The unit's responsibility includes the preliminary investigation of accidental and intentional bombing incidents and the rendering safe of unexploded devices that are explosive/chemical in nature.


The City was twice victimized in 1977 by the urban terrorist group known as the George Jackson Brigade — once at Rainier National Bank, where a live device was successfully disarmed by the Hazardous Device Unit and another incident at Phil Smart (automobile dealership), where the brigade was successful in detonating a device under a vehicle. The use of bombings as a coercive force has become a tool in the radicals' hands and is more the ordinary than the exception in today's society.

The mission of the Hazardous Device Unit is to provide a safe identification and render safe procedure against these types of clandestine devices for the public safety. Additionally, valuable evidence can be located and processed for the prosecution of suspect radicals in an effort to curtail their deadly bombings.


Total Explosive Related Complaints

Threats Against:	1976	1977	 Up 9.6%
Schools	16	23	
Commercial	17	24	
Public Agency	4	0	
Other	<u>15</u>	<u>10</u>	
TOTAL	52	57	

Bombings

	1976	1977	 Down 9.1%
Residence	8	3	
Commercial	1	6	
Public Agency	1	0	
Other/Incendiary	<u>1</u>	<u>1</u>	
TOTAL	11	10	

Other Related

	1976	1977	 Down 26.6%
Found Explosives	7	9	
Suspicious Package	7	2	
Dangerous Chemicals	<u>1</u>	<u>0</u>	
TOTAL	15	11	

Officer Jim Rochelle
& Kahuna visit numerous schools.



K-9 Unit

The departments K-9 unit consists of two German Shepherds, two Patrol Officers and a Lieutenant. Besides participating in the daily patrol function, a K-9 team is available to assist officers where the application of a police dog may help in the apprehension of a suspect, the discovery of evidence, or the recovery of stolen property.

Of 205 total applications of police dogs in 1977, 80 of those calls identified suspects, found evidence or located stolen property. These are arrests or evidence that may have gone undetected had police dogs not been available. The dogs were directly responsible for the arrest and conviction of persons who had committed armed robbery, arson, rape, auto theft, burglary and felony assault. During the year, the dogs also located a total of \$35,000 in stolen property, which the department subsequently returned to the rightful owners.

The Traffic Division

One of the largest responsibilities placed on any police department is the protection of people using the streets and sidewalks of the city. The loss to the community is greater in traffic accidents than all forms of crime put together. The losses each year in Bellevue amount to over one million dollars in vehicle and property damage. There are on the average 800 injuries and 3 deaths on our city streets each year. The monetary loss is actually much greater since this million dollar figure does not include medical expenses, loss of wages, police department time, insurance company costs, etc.

The mission of the Traffic Division is to reduce their occurrence as much as possible and to care for those who do become involved in an accident.

The Traffic Division's first job was to break down the two major objectives and prepare to accomplish each of them. The first was to care for those who have already been involved in an accident. This includes care for the injured, reconstructing the accident, identifying those involved, and determining responsibility for the collision. To properly care for the injured, all Traffic Officers received training as Emergency Medical Technicians.

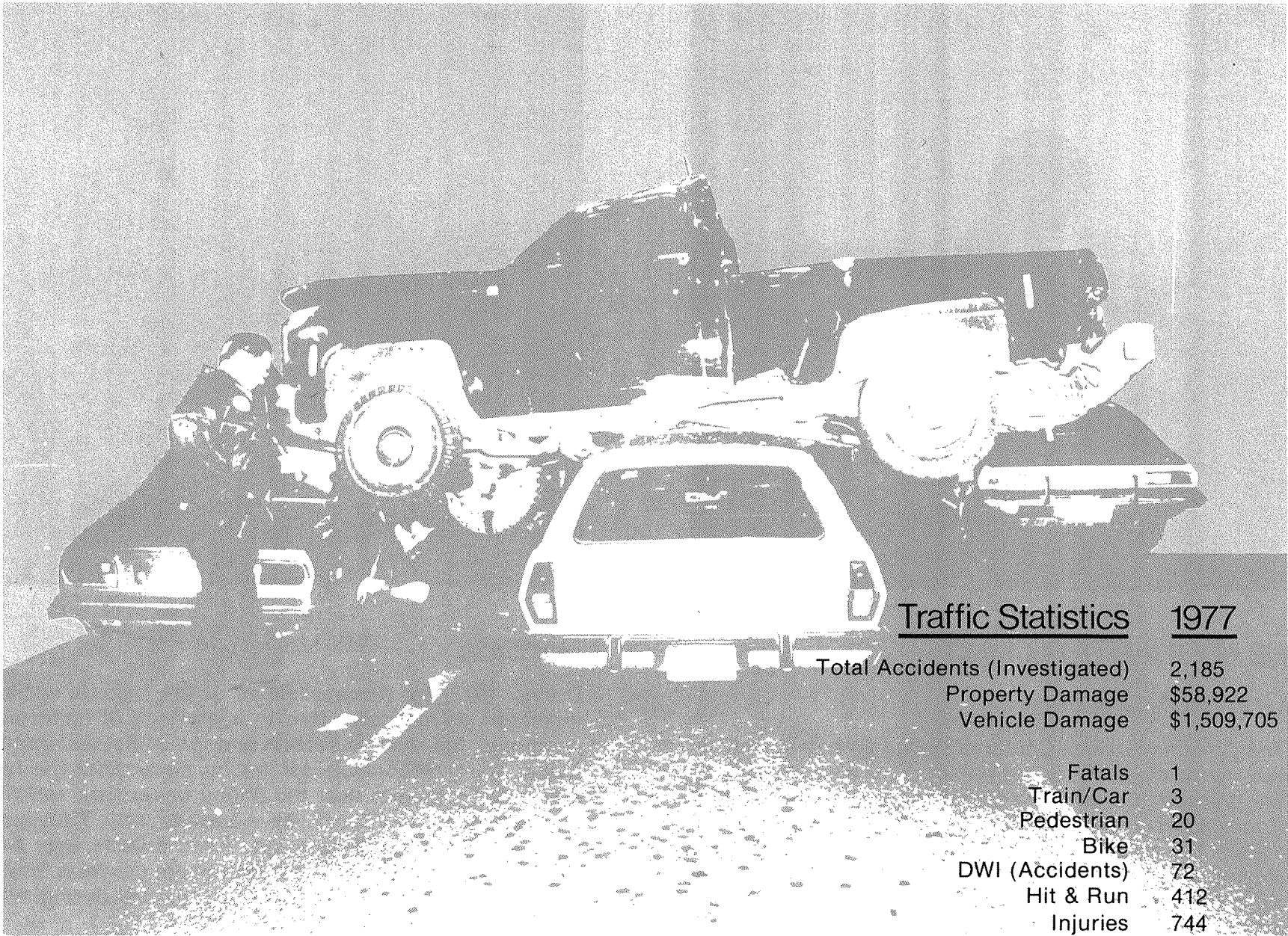
To increase the comfort of accident victims and to allow our accident investigators more room for equipment, we replaced two of our conventional traffic cars with vans designed for accident investigation. These vans have proven themselves to be far superior to the old style police car for the job.

Our second objective was to reduce the occurrence of the accidents in the city. We approached this problem from several directions. There are three primary ways in which accidents can be reduced and they are: (1) improving the driving environment through engineering changes, (2) education of the public, and (3) selective enforcement.

We realize that we can do more to reduce accidents by improving the driving environment than can be done through enforcement and education so our first emphasis was from this viewpoint. We looked for a superior data program which would show us where, on a 250 mile street network, we were having our worst problems. Bellevue became the model city for a new statewide traffic records program which supplied us with all the information we were seeking. Currently when we have a problem area we can examine the accident problem at that location for the past several years and often find engineering defects which are contributing to the accidents.

The second method we use to reduce accidents is through public education. We are involved with the school district in their education programs ranging from elementary to high school age groups. We use the various forms of media to advise the public of special problem areas and we have even broadcast our radar locations in an attempt to get people to obey the speed limits. We attend local community meetings and discuss special problems of the area. We also work closely with other safety groups in the area in an attempt to help people protect themselves.

Our final effort at reducing accidents is through enforcement of the traffic laws. We have officers trained in the various methods of enforcement and we keep them informed of the problem areas we wish emphasized and the violations which are causing the accidents in the city. Our efforts have proven successful overall, however, the problem grows larger with the city and true success can only evolve from a safety conscious public.



Traffic Statistics 1977

Total Accidents (Investigated)	2,185
Property Damage	\$58,922
Vehicle Damage	\$1,509,705
Fatals	1
Train/Car	3
Pedestrian	20
Bike	31
DWI (Accidents)	72
Hit & Run	412
Injuries	744



HEADQUARTERS UNIT

Communications

The Communications Center is staffed 24 hours a day by two dispatchers and a supervisor. The area covered by the dispatch center for police/fire/medical services includes a population figure of 278,000 people and approximately 175 square miles. In 1977, 17,694 calls for police service and 8,058 calls for fire service were handled by the dispatch center. The dispatchers average one transmission every thirty seconds for police service alone.



Records

During 1977 the responsibilities of the records section increased dramatically. Due to a shortage of uniformed personnel, the records section and the complaint coordinators were responsible for taking many after the fact minor crime reports over the phone rather than sending a patrol officer to contact the reporting party. Thus hundreds of patrol hours were saved and officers were free to respond to those crimes which were in progress. In addition, 13,186 crime reports were processed during 1977 in the records section.

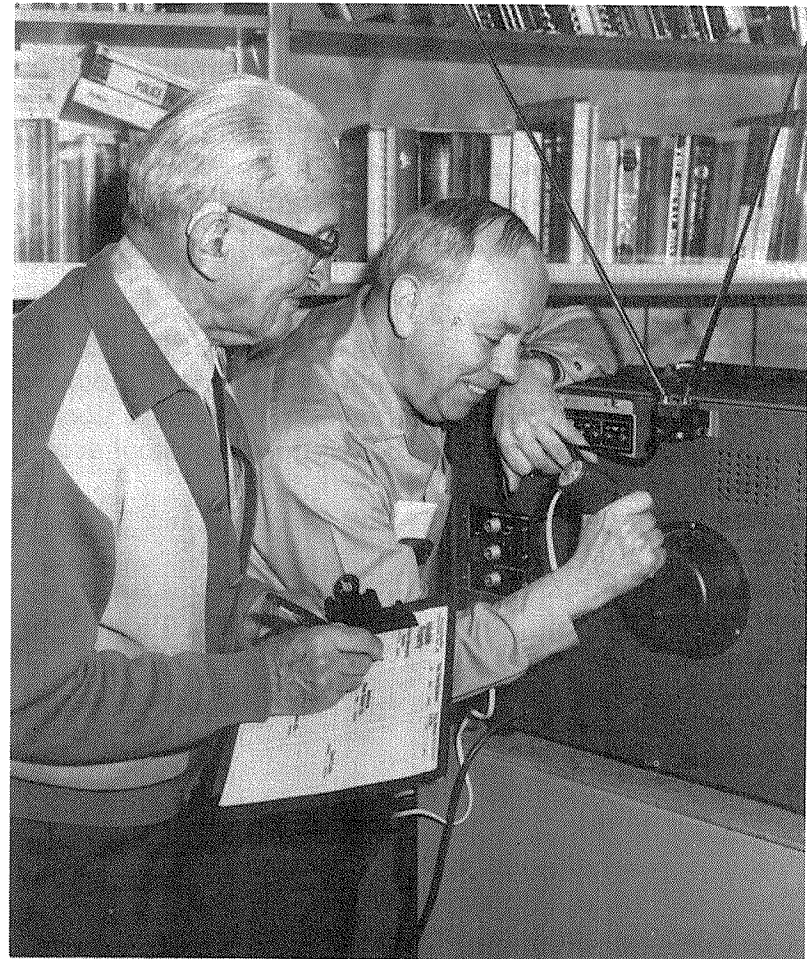
Crime Prevention Volunteers Aid The Police

In this day and age of increased demand for police services, volunteers have become a recognized asset to the Bellevue Police Department. A group that has continually given their time and effort is the Retired Senior Crime Prevention Volunteers. This dedicated group serves the community through the police department for no compensation.

A group of eight retired senior crime prevention volunteers were trained in June of 1976. The volunteers were recruited through the Eastside Retired Senior Volunteer Program which has an office at Bellevue Community College. During the eight hours training session volunteers learned about Operation Identification and how to give home security surveys. Operation ID is a statewide program to encourage citizens to engrave their drivers license number on articles of value. This program will hopefully deter a thief from taking a marked piece of property and will aid in recovery if an item is stolen. After items have been engraved, a sticker is placed on doors to inform a would-be thief that valuable property has been marked. The volunteers, upon request, will go to a home and engrave valuable property, make a record of the property and provide stickers to the homeowners. The volunteers have performed these services within 250 homes in Bellevue and have engraved over 1,200 pieces of valuable property.

Volunteers, who work in teams of two, also conduct home security surveys for Bellevue citizens. The surveys consist of the volunteers inspecting the home and making recommendations on how the homeowner can better secure his/her home against burglary. The volunteers may recommend better locks, increased lighting, installing a door viewer, increased window security, etc. These volunteers meet monthly with Bellevue Police Crime Prevention Officers to discuss and receive information on new security

Senior Volunteers shown donating their time to the Police and their community



hardware, to resolve problems that have been encountered, and to devise new methods by which to communicate our crime prevention message to more people.

The Bellevue Police Cadet Unit

The Bellevue Police Cadet Unit has been in existence since 1973 and is made up of young men and women between the ages of 15 and 20 who are interested in law enforcement as a career. The police department felt there was a need to show young people what police work was actually like and to dispel the "TV" image of the police officer. Cadets have an opportunity to ride with police officers on a regular tour of duty and participate in other police related activities. The Cadets also donate many hours of volunteer time to the police department.

During the summer the Cadets check homes of people who are on vacation for possible signs of burglary or vandalism. They participate in a School Vandalism Reduction Project where they patrol the schools at night to observe for criminal acts. If they do observe any criminal activity

they radio in the information and a patrol officer will respond to check the situation.

These young people are also going door to door in particular neighborhoods to set up burglary prevention and Block Watch programs, as an essential part of the police effort to spread knowledge of crime prevention. They also contact local businesses to passout Operation ID posters for display in the businesses and to leave Crime Watch pamphlets for the public.

The Bellevue Police Department has found that volunteers are a necessary ingredient for a successful crime prevention program. They enable the department to provide extended services to the public and at the same time provide citizens of the community, both young and old, an opportunity to take an active part in making their city a safer place to live.



