

**BELLEVUE
POLICE DEPARTMENT
BELLEVUE, WASHINGTON**

1966

ANNUAL REPORT

BELLEVUE POLICE DEPARTMENT

Captain H. E. Corlrey
Traffic Division

ANNUAL REPORT

FOR THE YEAR

1966



N. J. GIARDINA
CHIEF OF POLICE

TABLE OF CONTENTS

Captain H. P. Gierney
Traffic Division

City of Bellevue Public Officials	page 3
City of Bellevue General Information	page 4
City of Bellevue Map	page 5

SECTION I

DEPARTMENT ORGANIZATION AND PERSONNEL

Law Enforcement Code of Ethics	page 7
Chief's Message	page 8 - 9
Organization Chart	page 10
Patrol Division	page 11
Traffic Division	page 12
Detective Division	page 13
Services Division	page 14
Personnel by Position	page 15 - 16
Personnel Changes	page 17

SECTION II

STATISTICAL INFORMATION

Complaints - Personnel Strength	page 19
Complaints - Personnel Strength Graph	page 20
Budget Allowance	page 21

1966

City Population of 20,600

City Budget of \$3,264,901.00

11.6 sq. miles with 114 miles of public roads

Police Budget of \$218,476.00

32 Personnel 5 Traffic Officers

There has been an increase in complaint activity:

1964 over 1963 20.5% 1965 over 1964 27.0% 1966 over 1965 22.7%

Equipment

6 Police Cars

1 Car used for Traffic only

1 1966 Harley-Davidson motorcycle

Personnel

N.J. Giardina, Chief

4 Captains

4 Sergeants

2 Detectives

15 Patrolmen

6 Clerk-Matrons

Promotions

Sgt. H.F. Corkrey to Capt. 9-1-66

Sgt. D.P. Van Blaricom to Capt. 9-1-66

Ptlm. W.C. Fredrickson to Sgt. 9-1-66

Resignations

Ptlm. D.M. Wyatt 12-31-66

New Employees

Ptlm. D. Smith 1-1-66

Ptlm. R.A. Woods 9-1-66

Ptlm I.N. Strom 10-1-66

Ptlm. R.A. Maier 10-16-66

Clerk-Matron T.A. Berry 9-1-66

Traffic Division

The Traffic Division was created in August, 1965.

713 accidents

542 were officer investigated

171 were non-investigated citizen's reports

4 fatals

415 injured

Adult citations - 3960

Juv. citations - 367

Warnings - 5721

508 citations by radar

274 warnings by radar

1078 hours were spent for accident investigation

5345:30 hours were spent for Traffic Enforcement

TABLE OF CONTENTS (CONT)

Complaints - Arrests Graph	page 22
Complaints - Arrests	page 23 - 28
Complaint Zone Map	page 29
Complaint Breakdown	page 30 - 31
Arrest Breakdown	page 32 - 33
Accidents Citation Graph	page 34
Motor Vehicle Accidents	page 35 - 36
Traffic Enforcement	page 37
Miscellaneous Activity	page 38
Man Hours Distribution	page 39 - 40
Vehicle Operation	page 41

CITY OF BELLEVUE

PUBLIC OFFICIALS

COUNCIL:

Clarence F. Wilde - Mayor

Kenneth A. Cole

Kenneth A. Gates

Scott McDermott

Kenneth E. Sivula

Robert J. Meagher

William H. Biggs

CITY MANAGER:

L. Joe Miller

JUDGE:

Melvin V. Love - Bellevue District Justice

CITY ATTORNEY:

Joseph S. Miller

CIVIL SERVICE COMMISSION:

Willard A. Gallotte - Chairman

Arthur C. Evered

John F. Doorish

CITY OF BELLEVUE
GENERAL INFORMATION

INCORPORATED:

March 31, 1953

GOVERNMENT:

Council - Manager

LOCATION:

On the east side of Lake Washington directly across from the City of Seattle to which it is connected by two floating bridges.

AREA:

11.6 square miles with 114 miles of public streets

POPULATION:

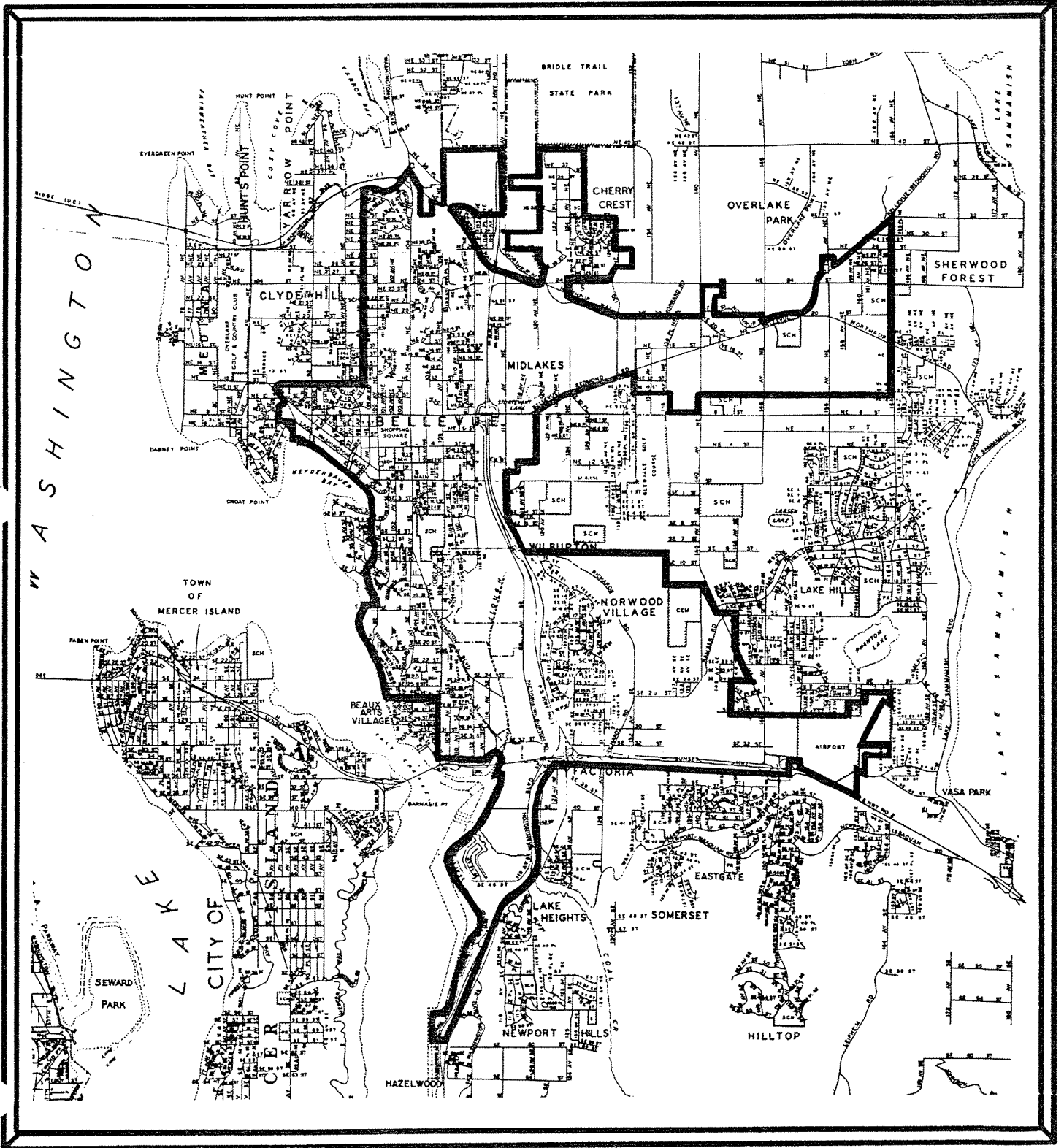
20,600

CHARACTER:

The City of Bellevue is the rapidly expanding center of business and residential development on the suburban "East Side" of metropolitan Seattle.

CITY OF BELLEVUE

1966



SECTION I

DEPARTMENT ORGANIZATION
AND
PERSONNEL

Law Enforcement Code of Ethics

As a Law Enforcement Officer, my fundamental duty is to serve mankind; to safeguard lives and property; to protect the innocent against deception, the weak against oppression or intimidation, and the peaceful against violence or disorder; and to respect the Constitutional rights of all men to liberty, equality and justice.

I will keep my private life unsullied as an example to all; maintain courageous calm in the face of danger, scorn, or ridicule; develop self-restraint; and be constantly mindful of the welfare of others. Honest in thought and deed in both my personal and official life, I will be exemplary in obeying the laws of the land and the regulations of my department. Whatever I see or hear of a confidential nature or that is confided to me in my official capacity will be kept ever secret unless revelation is necessary in the performance of my duty.

I will never act officiously or permit personal feelings, prejudices, animosities or friendships to influence my decisions. With no compromise for crime and with relentless prosecution of criminals, I will enforce the law courteously and appropriately without fear or favor, malice or ill will, never employing unnecessary force or violence and never accepting gratuities.

I recognize the badge of my office as a symbol of public faith, and I accept it as a public trust to be held so long as I am true to the ethics of the police service. I will constantly strive to achieve these objectives and ideals, dedicating myself before God to my chosen profession . . . law enforcement.

CHIEF'S
MESSAGE



Mr. L. Joe Miller, City Manager
City of Bellevue, Washington

Dear Mr. Miller:

Submitted herewith is the 1966 Annual Report of the Bellevue Police Department.

As predicted at the end of 1965, in which an unprecedented activity increase was experienced, the year 1966 continued still higher with a 22.7 % further increase and this trend may be expected to proceed upwards as a reflection of the explosive development in the City of Bellevue and Greater Bellevue area, particularly since 1963.

It is imperative that we meet the expanded demands for service with proportionate increases in personnel and equipment but I must point out that it is becoming increasingly difficult to recruit and retain the superior young men whom we attempt to attract for police service. Effective protection costs money and in the competition with private industry for the best people, we must be financially able to offer the incentives of higher income, improved working conditions and other benefits that will attract career applicants to

public service.

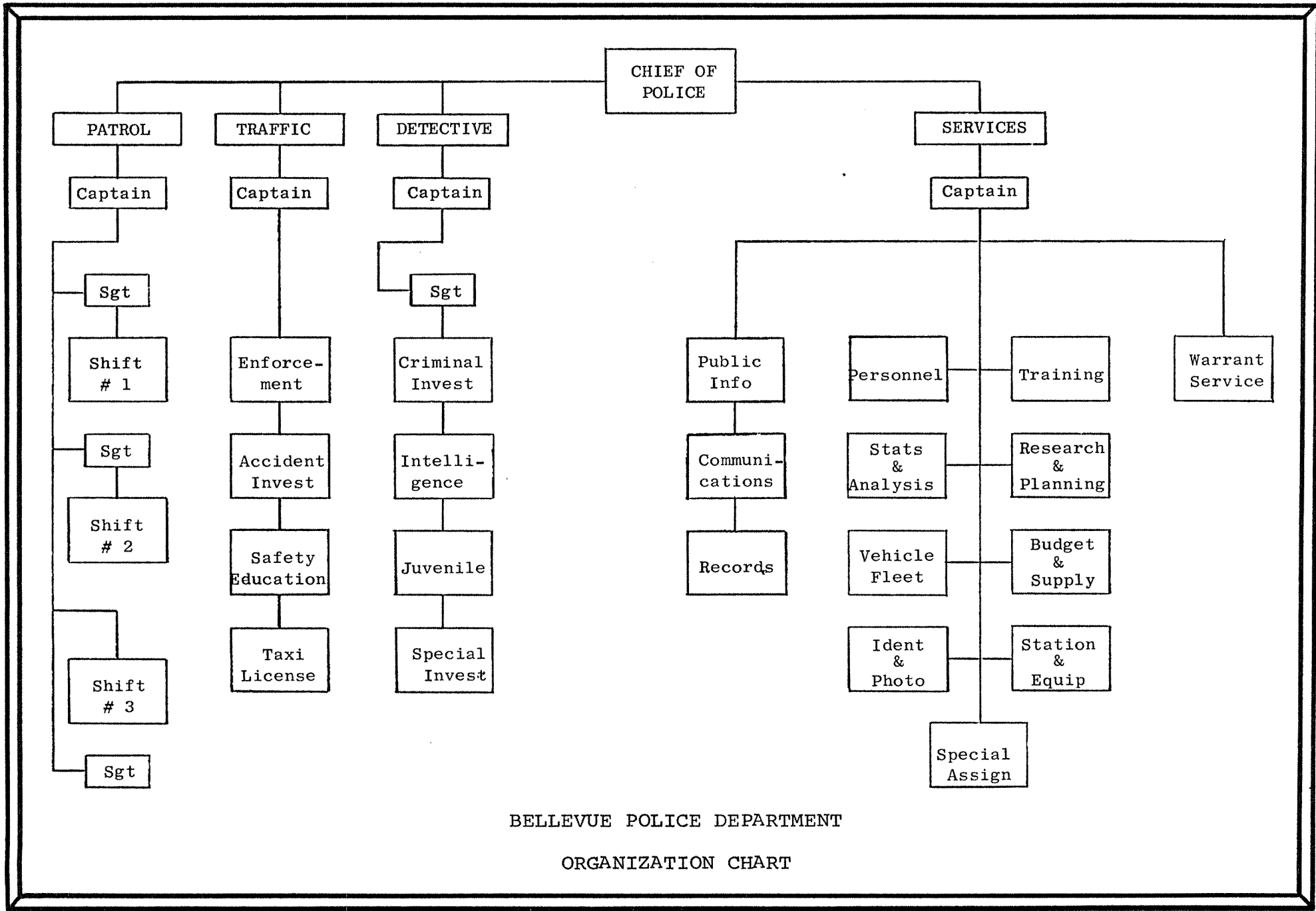
In addition to material and personnel resources, we must also have the resolute, and sometimes vocal, support of the community, if we are to succeed in maintaining the security necessary for a healthy social climate in which we can all live, prosper and raise our children.

As always, the Bellevue Police Department will continue to operate in purposeful dedication to the protection of the lives, rights and property of our citizens and I wish to commend the members of my staff for their unselfish pursuit of this goal.

Respectfully submitted,

A handwritten signature in cursive script, appearing to read "N. J. Giardina".

N. J. Giardina, Chief of Police



BELLEVUE POLICE DEPARTMENT

ORGANIZATION CHART

PATROL
DIVISION




The Patrol Division is the largest and oldest Division in the Bellevue Police Department and its function can be broadly described as the protection of life and property, preservation of the public peace and the protection of individual rights.

The Division, which is the primary component of the Department, is responsible for twenty-four hour coverage of the City and as such, it is supplemented by the Traffic, Detective and Services Divisions.

The Division's responsibility is divided into four sections and these are: regulation, investigation, general services and prevention. The regulation function involves enforcement of all criminal laws. The investigative function involves preliminary investigation of crime scenes, investigation of traffic accidents and inquiry into a myriad of other police calls. The general services function involves everything from providing life saving first aid to silencing a barking dog. The preventive function involves the use of professional patrol techniques to reduce criminal activity or other conditions requiring police control.

The Patrol Division strives to provide a high level of public service wherever and whenever required.


F.M. Anderson, Captain

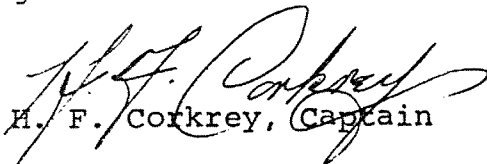
TRAFFIC
DIVISION



The Traffic Division was created by order of the Chief of Police in August, 1965 to accommodate the increase in traffic activity within the jurisdiction of the Bellevue Police Department, particularly in the category of vehicle accidents.

The Division is responsible for the promotion of traffic safety and strives to accomplish this function by enforcement of accident causing violations, consultation with the Engineering Department on needed improvements in the traffic pattern, participation in the high school driver education programs, assistance with the School Safety Patrol program and talks to various citizen groups. In spite of such efforts, accidents continue to occur and these are investigated to determine causes. The investigation is intended not only to assign liability, but also to discover means by which similar future accidents can be prevented. Prevention of accidents is the primary responsibility of the Division and constitutes its reason for existence.

The Traffic Division maintains an accident records section which indicates areas of need and operational effectiveness so that available resources will be applied where they will gain the most beneficial results.


H. F. Corkrey, Captain

DETECTIVE
DIVISION



The Detective Division was established early in the development of the Bellevue Police Department organization and has expanded with the requirements of increased activity in the investigative area of responsibility.

The Division has primary responsibility for three sections and these are: criminal investigation, juvenile and intelligence. Criminal investigation includes the follow up investigation of all felonies and many misdemeanors, which require special attention to effect a disposition. Each must be reviewed, investigated in an effort to identify the person responsible and prepared for prosecution in court. Juvenile includes the review of all complaints involving juvenile suspects to determine the individual circumstances and make a decision on whether there should be a referral to Juvenile Court or reliance upon parental supervision with police assistance. Intelligence includes the compilation of information on active criminals and their operations so that they can be more effectively investigated.

To fulfill their assigned responsibilities, Division personnel must maintain a close liaison relationship with police and other official agencies for mutual assistance.

The Detective Division strives to maintain the highest rate of complaint clearance possible.

George C. Whitman
G.C. Whitman, Captain

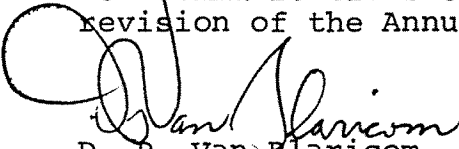
SERVICES
DIVISION



The Services Division was created by order of the Chief of Police in July, 1964 to accommodate the expanding activities of the Bellevue Police Department.

The Division is responsible for all the supportive functions within the Department operation and exists to provide the means by which the Patrol, Traffic and Detective Divisions can accomplish their respective assignments. This includes the operation of the various communications facilities, compilation of records and statistical reports, recruitment and training of personnel, supply of materials and equipment, maintenance of vehicles and equipment, research and planning for operational improvement, warrant service and miscellaneous assignments as may be required. The women assigned to the Division perform all Department clerical and secretarial functions as well as providing assistance with the processing of female prisoners.

Some of the Division accomplishments are: revision of the reporting system to provide a comprehensive digest of activity, establishment of a complete Basic Law Enforcement Training program for all new personnel, coordination of a new communications center for Police and Fire Services, and revision of the Annual Report.


D. P. Van Blaricom, Captain

PERSONNEL BY POSITION

NAME	START	POSITION	MONTHLY
			SALARY
N.J.Giardina	1/1/55	Chief	\$ 805
G.C.Whitman	9/16/53	Captain	694
G.R.Quarnstrom	1/1/55	Captain	660
H.F.Corkrey	12/1/55	Captain	660
D.P.Van Blaricom	12/6/56	Captain	660
F.M.Anderson	11/13/56	Sergeant	629
R.F.Davis	8/5/58	Sergeant	629
C.A.Meyer	1/1/57	Sergeant	629
W.C.Fredrickson	5/1/61	Sergeant	629
R.H.Wittauer	10/14/57	Detective	* 618
D.J.Lapthorne	10/1/61	Detective	* 589
G.A.George	8/1/60	Patrolman	544
J.C.Kellum	11/5/61	Patrolman	572
F.D.Williams	7/16/63	Patrolman	572
N.L.Kelly	10/16/63	Patrolman	544
D.M.Wyatt	10/16/63	Patrolman	544
J.J.Brennan	6/16/64	Patrolman	544
C.D.Hein	8/17/64	Patrolman	544
J.B.Pettersen	10/16/64	Patrolman	544
J.E.Hassinger	1/11/65	Patrolman	544
G.E.Arcand	4/1/65	Patrolman	517

PERSONNEL BY POSITION (CONT)

			MONTHLY
NAME	START	POSITION	SALARY
D.E.Hansen	5/16/65	Patrolman	\$ 517
D. Smith	1/1/66	Patrolman	517
R.A. Woods	9/1/66	Patrolman	492
I.N.Strom	10/1/66	Patrolman	492
R.A.Maier	10/16/66	Patrolman	492
F.M.Allen	8/15/57	Clk-Matron	445
C.T.Steere	12/3/57	Clk-Matron	445
L.M.Beard	2/1/61	Clk-Matron	424
B.J.Woolard	11/2/61	Clk-Matron	424
R.A.Stone	12/16/65	Clk-Matron	366
T.A.Berry	9/1/66	Clk-Matron	350

* Includes additional 3% Detective allowance

PERSONNEL CHANGES

PROMOTIONS:

Captain H. F. Corkrey from Sergeant 9/1/66

Captain D. P. Van Blaricom from Sergeant 9/1/66

Sergeant W. C. Fredrickson from Patrolman 9/1/66

NEW PERSONNEL:

Patrolman D. Smith started 1/1/66

Clk-Matron T. A. Berry started 9/1/66

Patrolman R. A. Woods started 9/1/66

Patrolman I.N. Strom started 10/1/66

Patrolman R. A. Maier started 10/16/66

TERMINATIONS:

Patrolman D.M. Wyatt resigned 12/31/66

SECTION II

STATISTICAL INFORMATION

COMPLAINTS - PERSONNEL STRENGTH

10 YEARS - 1957 THRU 1966

The Bellevue Police Department has experienced an explosive increase in complaint activity, particularly since 1963, which has been recorded as follows:

1964 over 1963 - 20.5 %

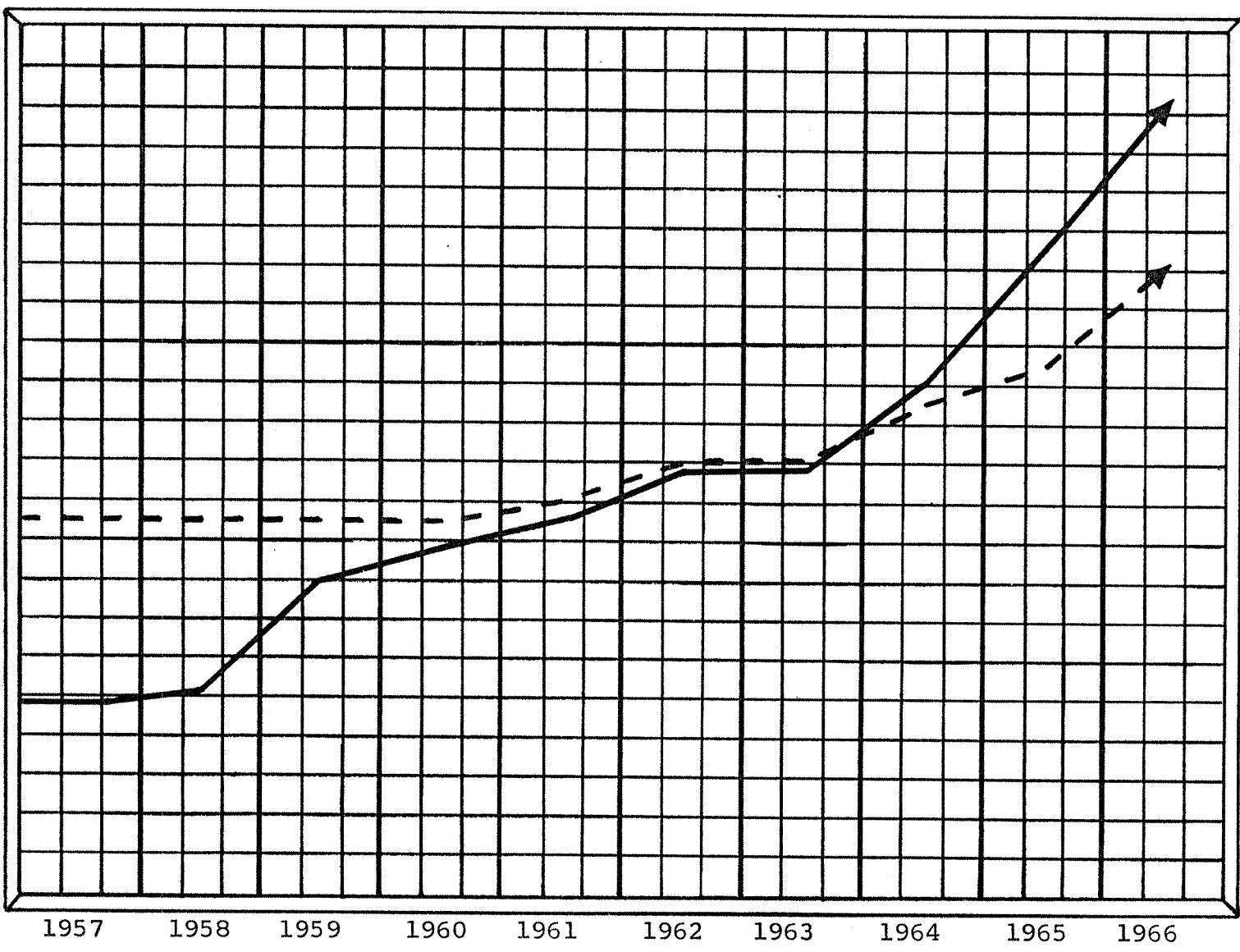
1965 over 1964 - 27.0 %

1966 over 1965 - 22.7 %

This trend may be expected to continue upwards for several reasons, the most important of which is area growth and development with all the accompanying factors that necessitate increased police service

The following graph illustrates the correlation of personnel strength with complaint activity over the ten year period of 1957 thru 1966. Prior to 1962, the Department was progressing through the development stages from its inception in 1953. It will be noted that the year 1963 is an indication of balance between the number of complaints received and the total number of personnel required to process them effectively. It would appear that a ratio of one police employee per 100 complaints per year is the local requirement for adequate service.

4200 42
4000 40
3800 38
3600 36
3400 34
3200 32
3000 30
2800 28
2600 26
2400 24
2200 22
2000 20
1800 18
1600 16
1400 14
1200 12
1000 10
800 8
600 6
400 4
200 2
0 0



Complaints —
Personnel - - -

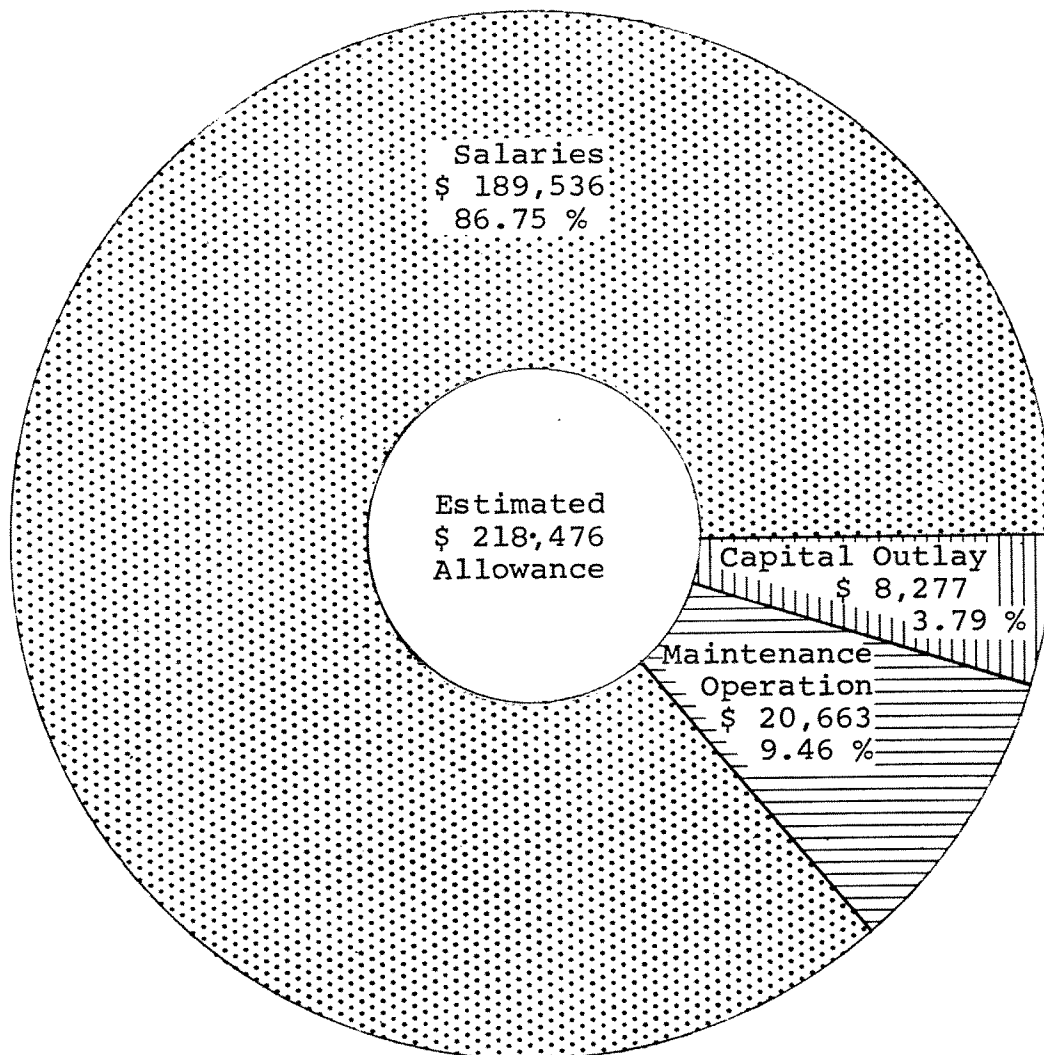
COMPLAINTS - PERSONNEL STRENGTH

10 YEARS - 1957 THRU 1966

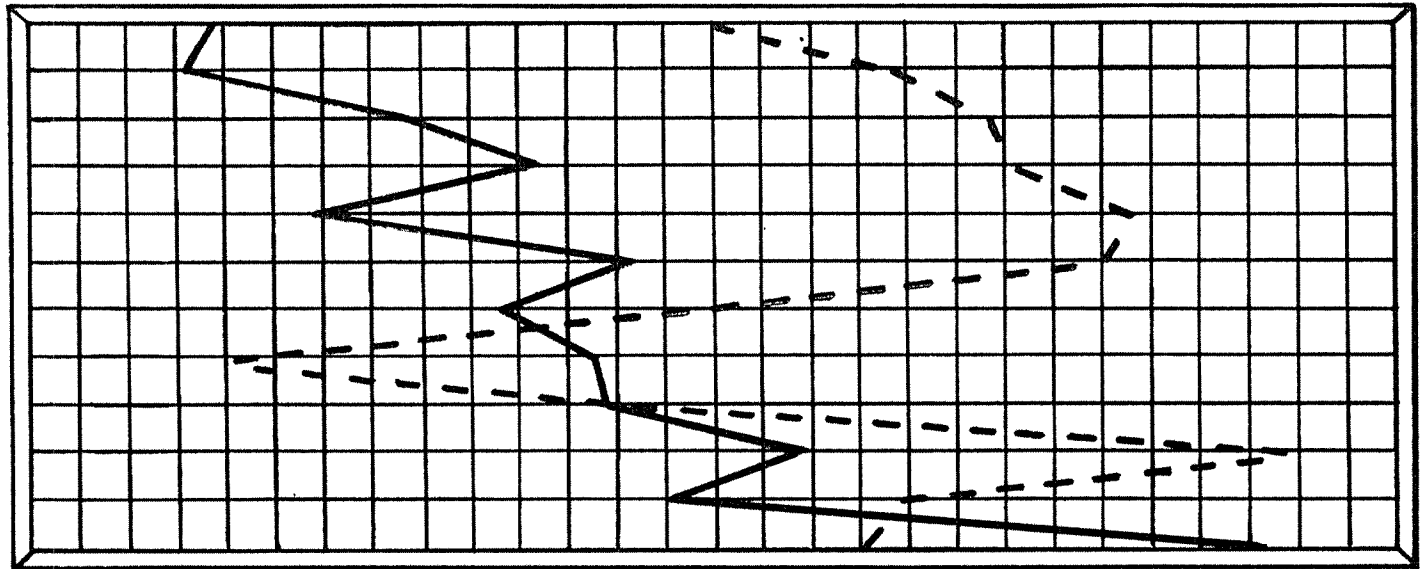
BUDGET ALLOWANCE

The budget allowance of the Bellevue Police Department was \$ 218,476.00 and this was 6.69 % of the total City of Bellevue budget allowance.

This represents a per capita cost of \$ 10.61 for police services, (a reduction of .01 ¢ from 1965).



January
 February
 March
 April
 May
 June
 July
 August
 September
 October
 November
 December



4020 Complaints

999 Arrests

200 225 250 275 300 325 350 375 400 425 450 475 500 525 550

40 45 50 55 60 65 70 75 80 85 90 95 100 105 110

COMPLAINTS - ARRESTS

YEAR OF 1966

COMPLAINTS - ARRESTS

TYPE OF ACTIVITY	COMPLAINTS		ARRESTS	
	TAKEN	CLEAR	ADULT	JUV
1-ANIMALS				
A-Vicious	49	43		
B-Other	47	39		
2-ARSON	14	5		8
3-ASSAULT				
A-1st & 2nd degree	5	3	4	
B-3rd degree	38	24	4	14
C-Threatened	15	10		
D-Other	1	1		
4-ASSISTANCE				
A-Official agency	100	100	65	19
B-Other	12	12		
5-BURGLARY				
A-Commercial	78	12	3	5
B-Residence	92	23	4	8
C-Public agency	8			
D-Poss burglar tools	1	1	2	
E-Other	18	10		10
6-DISTURBANCE				
A-Civil dispute	13	13		

COMPLAINTS - ARRESTS (CONT)

B-Disorderly conduct				
1-Fighting	18	18	5	1
2-Other	42	42	15	6
C-Domestic	55	55		
D-Other	10	10		
7-ESCAPEE				
A-From custody				
B-Apprehension	1	1		
8-EXTORTION				
9-FORGERY (except 13A1-B1)	13	7	8	
10-HOMICIDE				
A-Murder				
B-Other (except 25)	1	1		
11-INJURY TO PROPERTY				
A-Malicious	299	42	1	9
B-Other (except 25)	14	8		
12-KIDNAPPING				
13-LARCENY				
A-Petit				
1-Bank Check	220	132	22	
2-Bicycle	57	10		2
3-Boat				
4-Motor Vehicle				
a-TMVWOOP	8	8	5	14

COMPLAINTS - ARRESTS (CONT)

b-Auto strip	73	6	3	4
c-Gas siphon	23	5		7
5-All other				
a-By auto prowl	48	7		
b-From boat	8			
c-From coin box	37	6		
d-By fraud	24	12	7	
e-By shoplift	94	78	29	32
f-By other method	165	32	4	5
B-Grand				
1-Bank check	116	78	1	
2-Boat	2			
3-Motor Vehicle				
a-Auto	32	23	5	4
b-Motorcycle	3	1		
c-Other lic veh				
d-Auto strip	17	6	3	
4-All other				
a-By auto prowl	18	5		
b-From boat	5	2		
c-From coin box				
d-By fraud	27	13	1	
e-By shoplift	12	2	1	1
f-By other method	77	15	4	

COMPLAINTS - ARRESTS (CONT)

14-LICENSE VIOLATION	2	2		
15-LIQUOR				
A-Minor poss	66	66	97	67
B-Supply to minor	3	3	6	
C-Drunk (except 25)	37	37	49	3
D-Other	1	1	3	
16-JUVENILE				
A-Curfew	26	26		54
B-CTDOJ (except 15)	4	4	6	
C-Dependent child	6	6		7
D-Incorrigible	14	14		12
E-Runaway	37	36		17
F-Other	10	10		2
17-MISCELLANEOUS	33	20	14	6
18-NUISANCE	60	34		
19-PROWLER	68	14		
20-QUESTIONABLE ACTION	132	61		
21-ROBBERY				
A-Armed	5	4	3	
B-Other				
22-SEX				
A-Homosexual act				
B-Indecent exposure	17	7	2	1
C-Indecent liberties	3	1		1

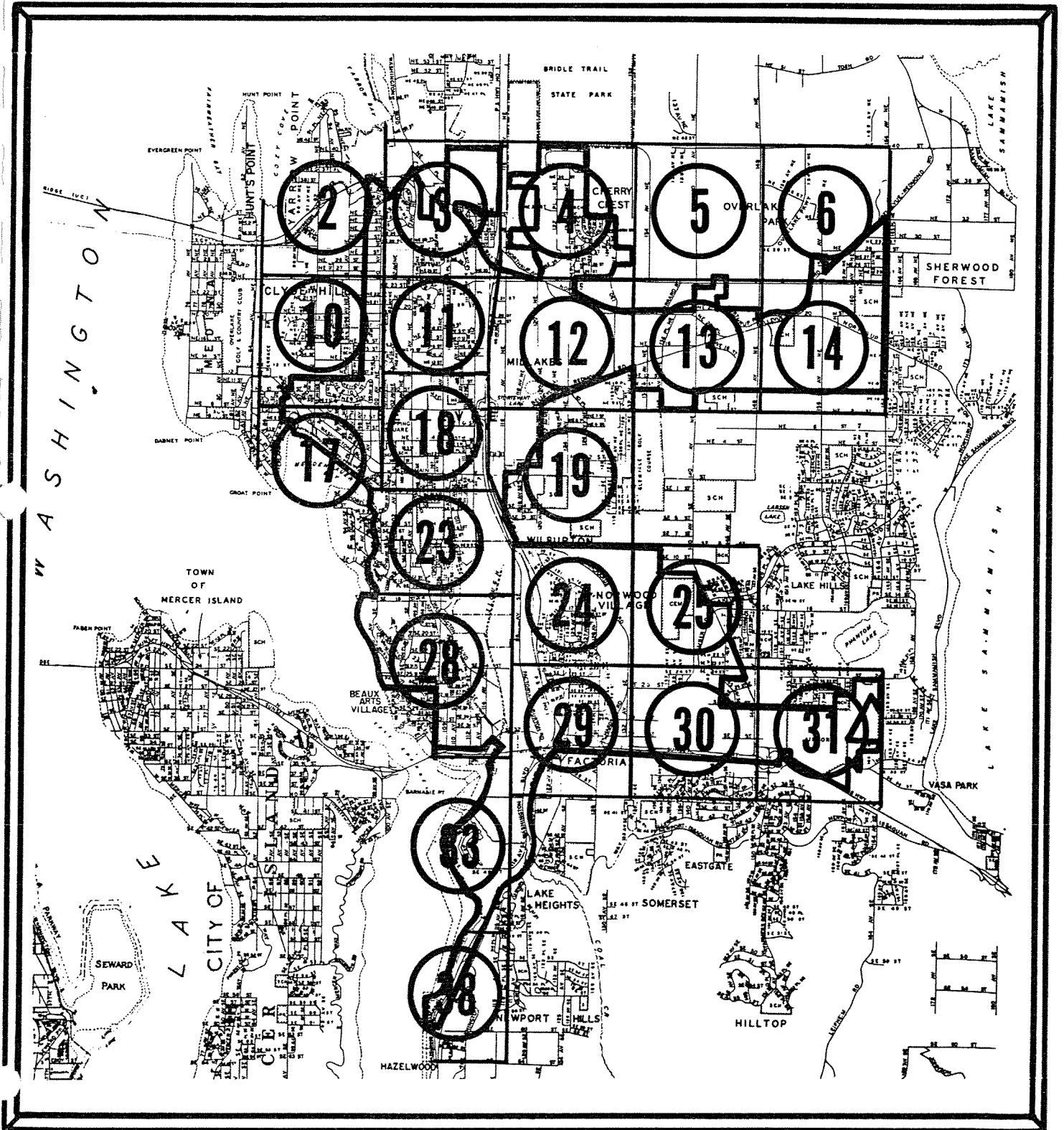
COMPLAINTS - ARRESTS (CONT)

D-Obscenity				
1-By telephone	22	1		
2-Other	7	2		
E-Rape				
1-Forcible	2			
2-Statutory	1	1		
F-Other				
23-STOLEN PROPERTY				
A-Possession				7
B-Recovery				
1-Auto	7	7	3	1
2-Motorcycle				
3-Other lic veh				
4-Other	1	1		
24-SUICIDE				
A-Threatened	4	6		
B-Attempted	22	22	1	2
C-Completed	1	1		
25-TRAFFIC				
A-Motor Vehicle	1215	1206	253	16
B-Marine				
C-Aircraft	3	3		
26-TRESPASS				
A-Solicitor				

COMPLAINTS - ARRESTS (CONT)

B-Other	3	3		
27-VAGRANCY	3	3	3	
28-VICE				
A-Gambling	1	1	1	
B-Narcotics	23	20	6	3
C-Prostitution				
29-WEAPONS				
A-Unlawful carry	3	3		
B-Other	2	2		
30-NON CRIMINAL				
A-Death	5	5		
B-Injury or illness	4	4		
C-Mental disorder	9	9	2	
D-Missing (except 16E)	13	13		
E-Property lost	29	29		
F-Property found	97	97		
G-Other	9	9	6	
TOTALS	4020	2715	651	348
TYPE OF ACTIVITY	TAKEN CLEAR		ADULT	JUV
	COMPLAINTS		ARRESTS	

COMPLAINT ZONES



COMPLAINTS - ARRESTS (CONT)

COMPLAINTS BY ZONE:

Zone 2	29	Zone 19	172
Zone 3	136	Zone 23	210
Zone 4	57	Zone 24	128
Zone 5	5	Zone 25	21
Zone 6	38	Zone 28	194
Zone 10	88	Zone 29	221
Zone 11	168	Zone 30	66
Zone 12	144	Zone 31	88
Zone 13	150	Zone 33	10
Zone 14	173	Zone 34	5
Zone 17	139	Zone 38	6
Zone 18	1633	Station	139

COMPLAINTS BY MONTH:

January	247	July	319
February	238	August	342
March	292	September	348
April	229	October	397
May	270	November	366
June	355	December	517

COMPLAINTS - ARRESTS (CONT)

COMPLAINTS BY DAY OF WEEK:

Sunday	372	Thursday	585
Monday	522	Friday	825
Tuesday	512	Saturday	672
Wednesday	532		

COMPLAINTS BY PATROL SHIFT:

0400 hours thru 1200 hours	647
1200 hours thru 2000 hours	1978
2000 hours thru 0400 hours	1395

COMPLAINT VALUES:

Stolen Property	\$ 170,583.85
Damaged Property	\$ 15,057.59
Recovered Property	\$ 58,487.83

COMPLAINTS INCLUDED:

Physical Assault of Officer	11
Use of a Weapon	33
Use of Narcotics (except traffic)	50
Use of Intoxicants (except traffic)	229

COMPLAINTS - ARRESTS (CONT)

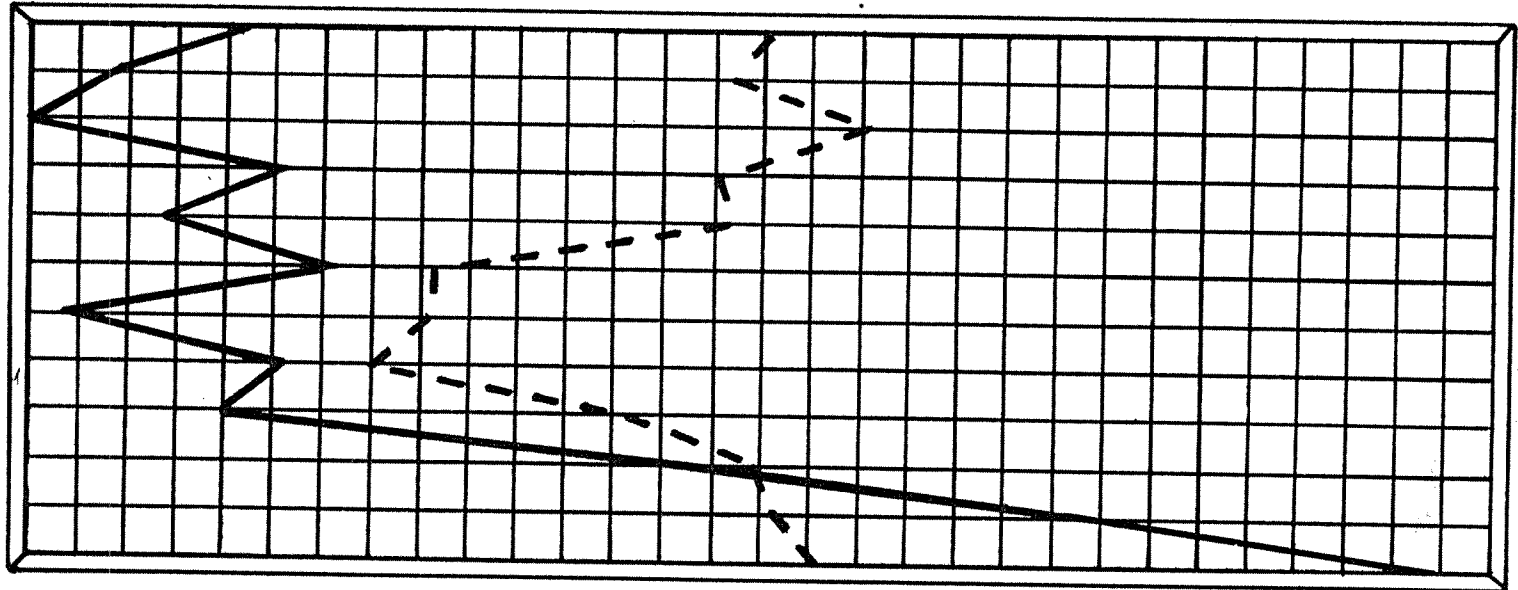
ARRESTS BY MONTH:

ADULTS		JUVENILES	
January	59	January	16
February	60	February	22
March	58	March	31
April	63	April	28
May	72	May	25
June	56	June	39
July	45	July	30
August	32	August	19
September	42	September	29
October	54	October	50
November	51	November	35
December	59	December	24

ARRESTS BY TYPE:

ADULTS		JUVENILES	
Criminal-on view	248	Criminal-on view	311
Criminal-warrant	85	Criminal-warrant	2
Traffic-on view	105	Traffic-on view	16
Traffic-warrant	148	Traffic-warrant	0
For other agency	65	For other agency	19

January
 February
 March
 April
 May
 June
 July
 August
 September
 October
 November
 December



713 Accidents

4327 Citations

40 45 50 55 60 65 70 75 80 85 90 95 100 105 110 115
 200 225 250 275 300 325 350 375 400 425 450 475 500 525 550 575

ACCIDENTS - CITATIONS

YEAR OF 1966

MOTOR VEHICLE ACCIDENTS

ALL ACCIDENTS:

Total reported	713
Investigated by Police	542
Citizen report (no investigation)	171
Fatalities	4
Persons injured	415
Pedestrian involved	4
Bicycle involved	7
Hit and run	20

VIOLATIONS CAUSING GREATEST NUMBER OF ACCIDENTS:

Failure to yield right of way	32.0 %
Following too close	20.2 %

ACCIDENTS BY MONTH:

January	51	July	42
February	44	August	53
March	38	September	50
April	53	October	74
May	47	November	94
June	56	December	111

MOTOR VEHICLE ACCIDENTS (CONT)

ACCIDENTS BY DAY OF WEEK:

Sunday	59	Thursday	106
Monday	112	Friday	127
Tuesday	91	Saturday	116
Wednesday	102		

ACCIDENTS BY HOUR OF AM:

$\frac{12-1}{30}$	$\frac{1-2}{11}$	$\frac{2-3}{11}$	$\frac{3-4}{4}$	$\frac{4-5}{4}$	$\frac{5-6}{4}$	$\frac{6-7}{7}$	$\frac{7-8}{49}$	$\frac{8-9}{32}$	$\frac{9-10}{22}$	$\frac{10-11}{26}$	$\frac{11-12}{25}$
-------------------	------------------	------------------	-----------------	-----------------	-----------------	-----------------	------------------	------------------	-------------------	--------------------	--------------------

ACCIDENTS BY HOUR OF PM:

$\frac{12-1}{33}$	$\frac{1-2}{25}$	$\frac{2-3}{48}$	$\frac{3-4}{50}$	$\frac{4-5}{67}$	$\frac{5-6}{83}$	$\frac{6-7}{42}$	$\frac{7-8}{41}$	$\frac{8-9}{22}$	$\frac{9-10}{33}$	$\frac{10-11}{19}$	$\frac{11-12}{25}$
-------------------	------------------	------------------	------------------	------------------	------------------	------------------	------------------	------------------	-------------------	--------------------	--------------------

ACCIDENT VALUES:

Vehicle and Property damage	\$ 370,974.23
-----------------------------	---------------

TRAFFIC ENFORCEMENT

ENFORCEMENT ACTION TAKEN:

Moving citations:	4327
Adults	3960
Juveniles	367
Parking citations	92
Warnings	5721

MOVING CITATIONS BY HOUR OF AM:

<u>12-1</u>	<u>1-2</u>	<u>2-3</u>	<u>3-4</u>	<u>4-5</u>	<u>5-6</u>	<u>6-7</u>	<u>7-8</u>	<u>8-9</u>	<u>9-10</u>	<u>10-11</u>	<u>11-12</u>
166	109	91	63	26	35	37	162	203	185	172	235

MOVING CITATIONS BY HOUR OF PM:

<u>12-1</u>	<u>1-2</u>	<u>2-3</u>	<u>3-4</u>	<u>4-5</u>	<u>5-6</u>	<u>6-7</u>	<u>7-8</u>	<u>8-9</u>	<u>9-10</u>	<u>10-11</u>	<u>11-12</u>
240	256	245	324	392	329	190	151	162	203	188	163

MISCELLANEOUS ACTIVITY

Field contacts:	
Adults	682
Juveniles	688
Calls for service answered	8781
Follow up investigations conducted	4093
Escorts provided	847
Open buildings discovered	758
Vacation house checks made	2211
City park checks made	1723
Assists to the general public	2696
Persons toured through Police Department	381
Public speaking engagements fulfilled	38
Breathalyzer examinations made	64
Identifications processed	207
Photographic negatives processed	1028
Ammunition expended in training:	
.38 special revolver	11175
.45 automatic submachine gun	300
12 gauge riot gun	115

MAN HOURS DISTRIBUTION

REGULAR HOURS :

Scheduled	60368
Worked	53532½
Patrol	12491½
Complaint taking	2316½
Follow up investigation	5119½
Accident investigation	1078
Traffic enforcement	5345½
* Juvenile	328½
** Desk	10162½
Special assignment	1467½
Training	1201
Court	407
Officer assistance	1399½
Services	3780½
Records	2016½
Supervision and administration	6418
Compensatory leave	1148
Sick leave	1479½
Vacation leave	4208

* Includes preventive services only

** Control communications and clerical activity

MAN HOURS DISTRIBUTION (CONT)

OVERTIME HOURS:

Worked	3038
Training	250½
Court	308
Other	2479½

VEHICLE OPERATION

MOTOR VEHICLE FLEET:

Car # 1 - 1964 Falcon - Investigation
Car # 2 - 1964 Falcon - Investigation
Car # 3 - 1965 Ford - Traffic
Car # 4 - 1966 Ford - Patrol
Car # 5 - 1966 Ford - Patrol
Car # 6 - 1966 Ford - Patrol
M/C # 1 - 1966 Harley Davidson - Traffic

OPERATIONAL MILEAGE:

Total miles travelled	216,596
Average daily mileage	593



Capital for the
London & ...