

10/2/16 PC  
Mtg



**BELLEVUE**  
**COLLEGE**

3000 Landerholm Circle SE · Bellevue, WA 98007-6484 · [www.bellevuecollege.edu](http://www.bellevuecollege.edu)

October 4, 2016

Dear Neighbor,

I would like to invite you to a follow up meeting to review Bellevue College Athletic Field Project at 5 p.m. on Thursday, October 27, 2016, on Bellevue College main Campus in building N, room 201. The purpose of this meeting is to learn more about the progress of the projects. We would like to share the Site plans and more project information with the neighbors and discuss any questions or concerns you may have. There will be a full set of plans and a site survey available for viewing at this meeting. Should this meeting time not work with your schedule, you are welcome to contact Vidya Ramachandran, 425-564-2473, we can schedule an alternate time to meet individually.

The college strives to foster a culture that embraces engagement with the community and maintain flexibility for accommodating future growth. I hope you will come to the meeting, please mark October 27 on your calendar and plan to attend. Julie Ellenhorn, City of Bellevue Neighborhood Outreach will also be present.

If you have any questions regarding this meeting, please call Vidya Ramachandran, 425-564-2473.

Thank you for your time, and I hope to see you at the meeting.

Sincerely,

Dexter Johnson  
Executive Director of Physical Plant Operations

Submitted by  
Betsy Attemer  
Map produced by  
Betsy Attemer



SET STARTED

ANALYZE / PHYSICAL CAMPUS

MP ALTERNATIVES

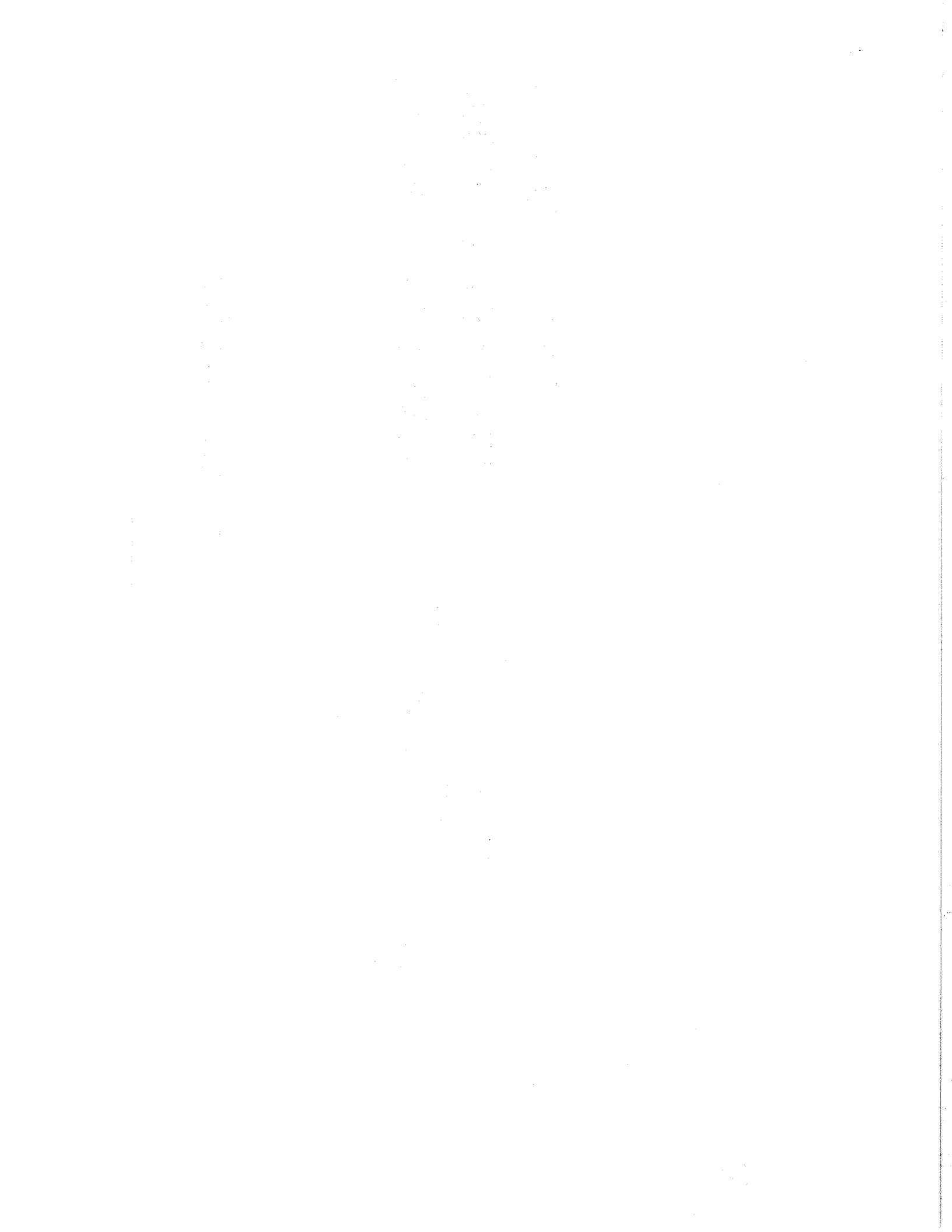
IMPLEMENT

DOCUMENT

# BUILDING ASSESSMENT / \$BCTC 2013 Facility condition survey

■ SUPERIOR  
■ ADEQUATE  
■ NEEDS  
■ MAINTENANCE





10/21/16  
PC MHG

Betsi Hummer  
East Bellevue Community Council  
ebcc@bellevuewa.gov  
Position 2  
October 2016

#### Larsen Lake Restrooms

Bellevue City Council.

Hello

I am Betsi Hummer, 14541 SE 26 St Bellevue WA 98007

I was elected to Position 2 of the East Bellevue Community Council in 2014, and I am here at the request of the EBCC.

EBCC has jurisdiction over certain land use zoning in East Bellevue.

We also serve as a forum for East Bellevue residents to voice their concerns about things that occur in our jurisdiction.

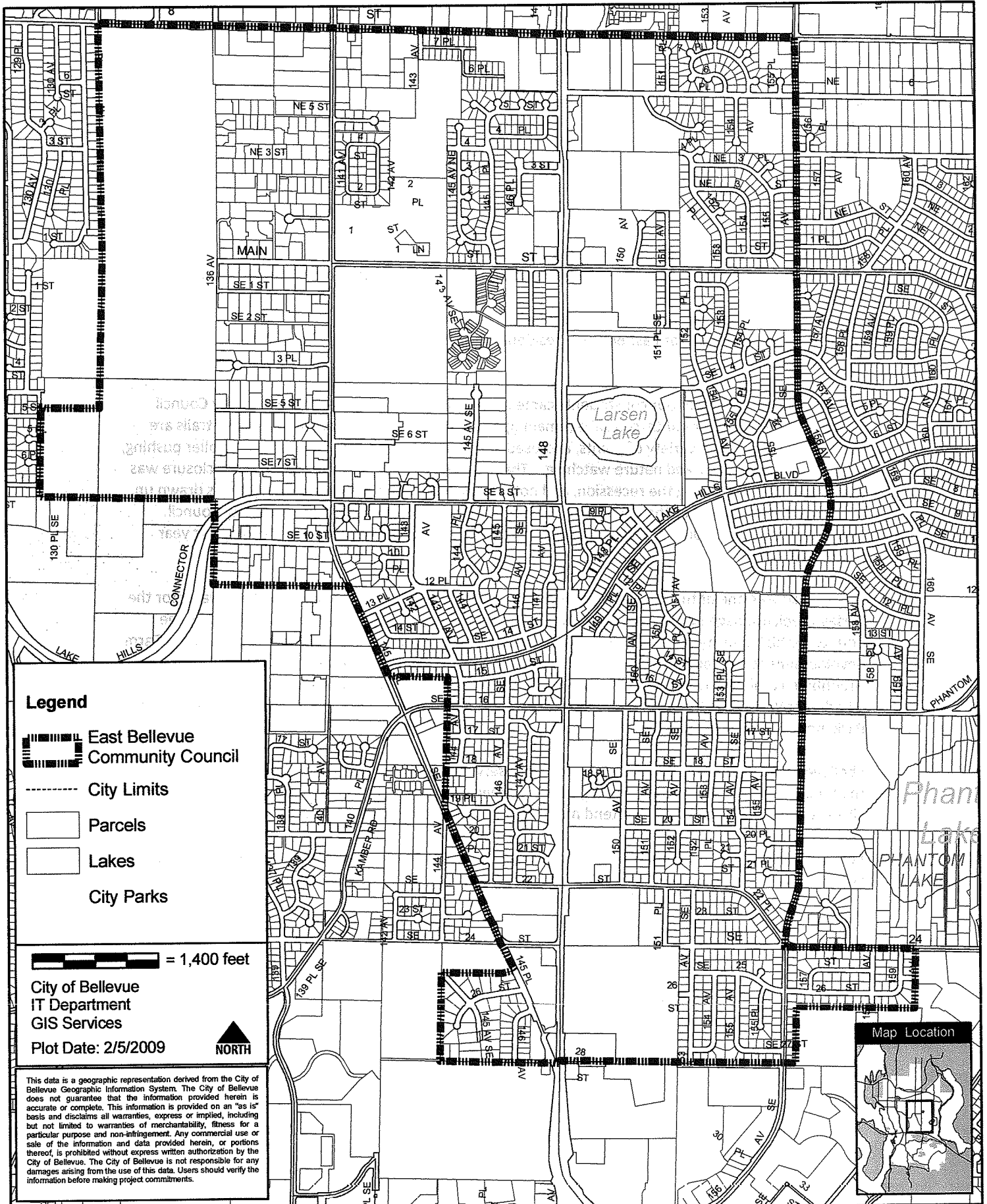
This past winter several of our constituents came before EBCC, the Parks Board and the City Council asking that the restrooms at Larsen Lake remain open during the winter. Larsen Lake's soft trails are easily accessible from a variety of points, and used year-round for walking, dog walking, stroller pushing, jogging, team practices, and nature watching. These Bellevue residents were told that the closure was due to a budget cut during the recession, and nothing could be done until a new budget was drawn up. It is my understanding that the Operations Budget is due for consideration before the City Council. I am asking that the Council be sure to put in a provision to keep the restrooms at this popular year round park open.

Larsen Lake was one of the first land use decisions made by EBCC. Larsen Lake is the headwater for the Kelsey Creek drainage system that threads throughout the city of Bellevue. Originally slated by the County for high density housing, EBCC helped direct Parks to purchase the Kelly family's Blueberry Farm development as the Lake Hills Greenbelt connecting Larsen Lake to Phantom Lake. The iconic Lake Hills Greenbelt, combined with the 148<sup>th</sup> Avenue Urban Boulevard established Bellevue nationally as a City in a Park that Welcomes the World. Providing basic amenities for the many year round visitors makes the Park more welcoming and safer.


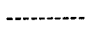

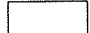

I believe we as elected, appointed, or hired public servants owe residents more than a pat "it's not in the budget" answer when several middle class, property owning, levy voting, tax paying, park using citizens make the extra effort to attend meetings to make their concerns heard.

I encourage you to find the funds in the Operations Budget to keep the restrooms at Larsen Lake open year-round.

# East Bellevue Community Council



## Legend

-  East Bellevue Community Council
-  City Limits
-  Parcels
-  Lakes
-  City Parks

 = 1,400 feet

City of Bellevue  
IT Department  
GIS Services

Plot Date: 2/5/2009



This data is a geographic representation derived from the City of Bellevue Geographic Information System. The City of Bellevue does not guarantee that the information provided herein is accurate or complete. This information is provided on an "as is" basis and disclaims all warranties, express or implied, including but not limited to warranties of merchantability, fitness for a particular purpose and non-infringement. Any commercial use or sale of the information and data provided herein, or portions thereof, is prohibited without express written authorization by the City of Bellevue. The City of Bellevue is not responsible for any damages arising from the use of this data. Users should verify the information before making project commitments.

Map Location



10/5/16  
re Mtg

**From:** Nextdoor Enatai and Surrey Downs [mailto:reply@rs.email.nextdoor.com]  
**Sent:** Wednesday, September 21, 2016 7:06 AM  
**To:** renaybennett@msn.com  
**Subject:** City / Sound Transit meeting for Enatai Residents

**City / Sound Transit meeting for Enatai Residents**

Brooks Beaupain from Enatai and Surrey Downs · 2h ago

Hi Neighbors,

We've been asked to let you know of an upcoming informational meeting that's being conducted by the City and Sound Transit next Tuesday, Sept. 27 from 7:00-8:30pm in City Hall room 1E-113. This meeting is specifically for Enatai residents and it will focus on three items:

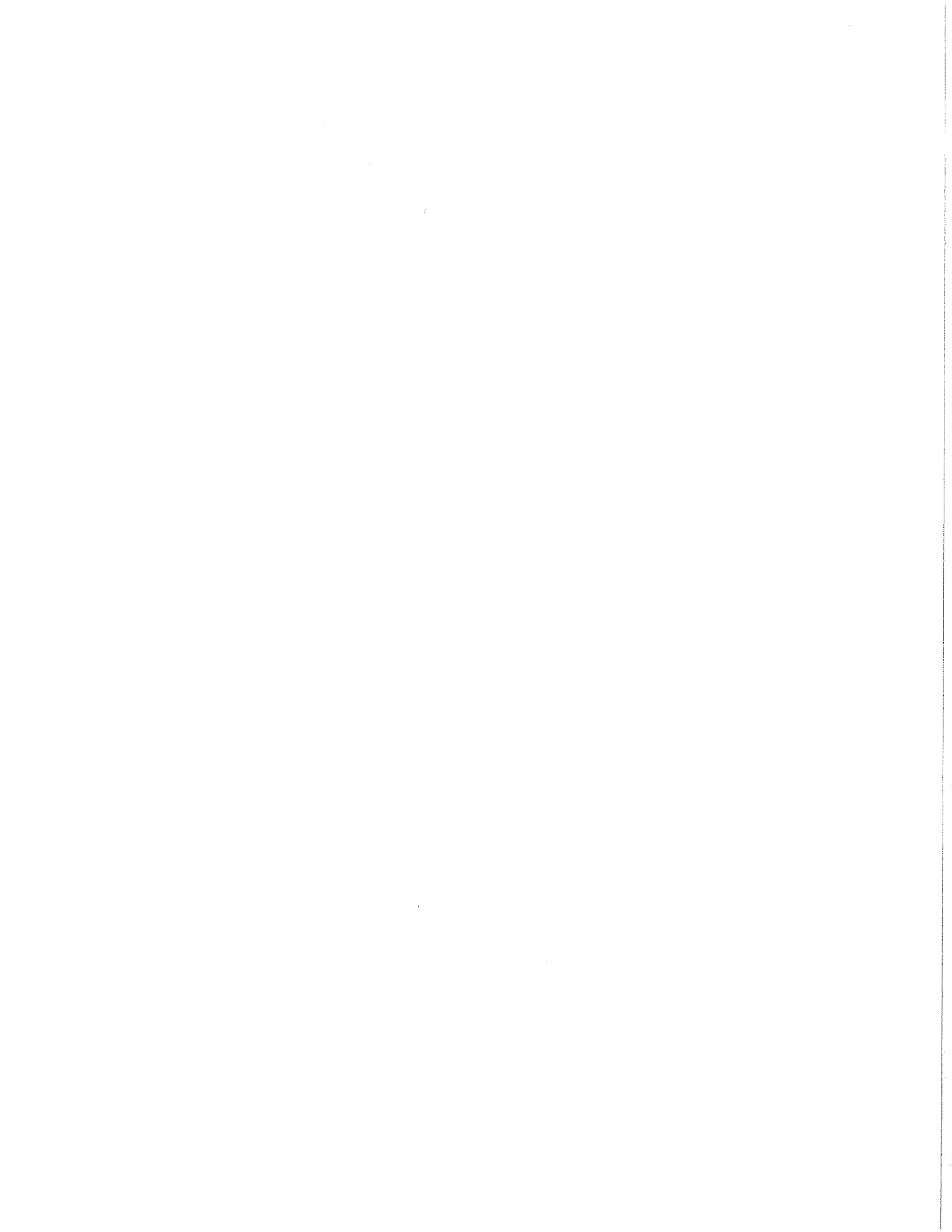
1. The Draft Neighborhood Traffic Mitigation Plan for use during East Link construction to minimize traffic impacts throughout Enatai.
2. Sound Transit's plan for the closure of the South Bellevue Park & Ride.
3. Sound Transit's 20-30 month use of the Enatai Beach Park for seismic retrofitting to the I-90 bridge columns and equipment staging for East Link.

All three agenda items are significant for those of us living in Enatai. This will be the first time much of the information is presented publicly. If interested, we strongly encourage you to attend, listen, and ask questions as this process evolves.

Respectfully,

The Enatai Neighborhood Association Board  
www.EnataiNeighborhood.com  
Wendy Jones, President (wendyrjones@hotmail.com)  
Brooks Beaupain, Vice President (brooks@windermere.com)  
Suzanne Dove, Treasurer  
Shared with Enatai and Surrey Downs in General

Submitted by Renay Bennett





Included in the study is the former BNSF Railway corridor. The Port of Seattle has acquired the portion of the former BNSF Railway corridor between the cities of Renton and Snohomish and the Redmond Spur into downtown Redmond. Sound Transit is in the process of acquiring 1.1 miles of the former BNSF Railway corridor from the Port of Seattle in Segment C, as well as an easement along the entire corridor. The City of Redmond purchased the Redmond Spur from the Port of Seattle. The portion of the former BNSF Railway corridor between Woodinville and Renton, including the Redmond Spur, is "rail-banked," which allows interim trail use of a freight rail right-of-way. King County and the City of Redmond intend to develop a regional trail along portions of the corridor. The rail-banked status of the corridor has been considered in the design of these alternatives. However, small additional property acquisitions might be needed to ensure that adequate space exists so as not to preclude either trail or future freight rail reactivation.

The following subsections briefly describe the recreational facilities located closest to the project alternatives. The parks along the project alternatives were also reviewed for sensitivity to noise, proximity to the alternatives and the alternative's potential for noise impacts. The only parks that are considered noise-sensitive under the FTA regulations are the sections of Mercer Slough Nature Park and Marymoor Park where peace and quiet are an essential part of the parks' purpose. Additional information on noise impacts on park resources is available in the Noise Section 4.7 and Appendix H2, *Noise and Vibration Technical Report*.

#### 4.17.2.1 Segment A

A total of 13 park and open space facilities are situated near and over Segment A from Seattle to Bellevue. All but three of these parks—South Day Street Park; Luther Burbank Park, which includes the Upper Luther Burbank Park area; and Gallagher Hill Open Space—are part of the larger network of Interstate 90 (I-90) parks along lids and overpasses. These parks also include the Outdoor Sculpture Gallery located adjacent to the City of Mercer Island's city center. In addition, a bicycle and pedestrian trail parallels the north side of the I-90 freeway. Although recreationists use this trail, the primary purpose of the shared-use path is transportation (see further discussion in Transportation Chapter 3, Section 3.7 Nonmotorized Facilities).

#### 4.17.2.2 Segment B

There are currently a total of four park and open space facilities in Segment B. The most notable of these is

Mercer Slough Nature Park, located between Bellevue Way SE and 118th Avenue SE directly north of I-90. Mercer Slough Nature Park is a 320-acre regional park characterized by wetland systems and upland habitat, the Mercer Slough Blueberry Farm (including fruit and vegetable produce sales), the Environmental Education Center on the east side of the park, the Sweylocken boat launch, and various trails including, the I-90 to Sweylocken Trails, among others; the historic Winters House is also located in the park. The I-90 Trail, continued from Segment A, is located within the park just north of the westbound lanes of I-90.

The park provides wetland habitat, environmental education and awareness, agricultural heritage maintenance, nature observation, views of downtown Bellevue, and open space with pedestrian trails, a water trail, benches, and interpretive signs. Bellevue Way SE is the park's western boundary. Portions of Mercer Slough Nature Park were acquired with LWCF and Washington State RCO funds.

Enatai Beach Park, located under the east approach of the East Channel Bridge between Mercer Island and Bellevue, is located under the project and would not be impacted by the project.

The Bellevue Way Greenbelt is located at the "Y" intersection of Bellevue Way SE and 112th Avenue SE; it primarily serves as a landscaping strip along the road.

A portion of the potential pedestrian/bicycle trail proposed by King County, in the former BNSF Railway corridor acquired through the rail banking process by the Port of Seattle, is in Segment B (as well as portions of Segment C, D, and E). The City of Bellevue's 2009 *Pedestrian and Bicycle Transportation Plan* includes a proposed new trail in Mercer Slough Nature Park.

#### 4.17.2.3 Segment C

Six park and open space facilities currently exist in Segment C, and two more are proposed: a buffer park along Main Street and a trail along the former BNSF Railway. Those closest to the alternatives are briefly described here.

To the south, Surrey Downs Park contains two athletic fields, a play structure, internal trails, open space, remnant stands of heritage filbert trees, the King County District Courthouse, and associated parking. Approximately 8.9 acres of the 11.4-acre site are currently used as park, with the remainder occupied by the King County District Courthouse and parking lots. In March 2009, the City of Bellevue adopted the *Surrey Downs Park Master Plan* for redeveloping the

