



Bellevue Transit Master Plan



***Transit Master Plan Forum
September 18, 2012***



- 1. Welcome**
- 2. Forum Purpose**
- 3. Briefings Recap**
- 4. Meeting Logistics**
- 5. Discussion Topics**





Bellevue Transit Master Plan

Join Us!

Please join Bellevue city staff and your colleagues on Bellevue's Boards and Commissions in shaping the city's transit service vision.

On July 9, 2012 the Bellevue City Council initiated the Bellevue Transit Master Plan (TMP) an update of the City's 2003 Transit Plan.

Per Council direction, Bellevue staff will facilitate an informal discussion on transit among members of the Transportation, Planning, Arts, and Human Services Commissions and the Parks and Community Services Board.

WHAT: Transit Master Plan Forum

WHEN: Tuesday, September 18 (from 6 to 8 PM)

WHERE: City Hall (Conference room 1E-108 and 1E-113)

We look forward to seeing you there!

*For more information contact: Franz Loewenherz, Senior Transportation Planner,
floewenherz@bellevuewa.gov 425-452-4077*

Visit our project website: <http://www.bellevuewa.gov/bellevue-transit-plan.html>

ma:10648 2/14.indd



Bellevue Transit Master Plan

Transit Forum

1. Good transit service is important to Bellevue residents, and public support for transit is strong in Bellevue based on 2012 Budget Survey results.
2. Average weekday bus ridership in Bellevue increased from 21,900 in 2003 to 40,250 in 2011, almost doubling in an 8-year period.
3. Good transit service is also critical to our economic vitality. We've heard from some of our largest employers that access to transit was an important factor in their decision to locate downtown.

4. The Bellevue Transit Master Plan will take into account the many notable changes underway in Bellevue as we plan for our transit needs in the future.
5. This project is timely in the current environment where King County Metro's financial outlook is uncertain, and service cuts and fare hikes are a real possibility.
6. This update of the 2003 Transit Plan supports Bellevue's land use vision and regional investments in bus and light rail infrastructure.

Bellevue Transit Master Plan

Other Transit Services

Metro Fixed Route Service



ST Regional Express



ST Light Rail Service



ST Commuter Rail Service



Access Paratransit



Dial-a-Ride-Transit (DART)



Commuter Vans

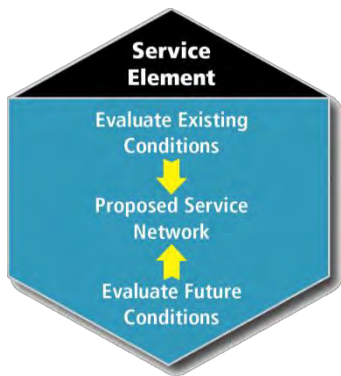


Taxi Script



- 1. Support planned growth and development in Bellevue with a bold transit vision that encourages long-term ridership growth.**
- 2. Engage community stakeholders in setting the priorities for transit delivery.**
- 3. Determine where and how transit investments can deliver the greatest degree of mobility and access possible for all populations.**

- 4. Incorporate other transit-related efforts (both bus and light rail) underway in Bellevue and within the region.**
- 5. Identify partnership opportunities to further extend transit service and infrastructure.**
- 6. Develop measures of effectiveness to evaluate transit investments and to track plan progress.**



Identifies the City’s transit service priorities that are responsive to different financial scenarios and attune to different time horizons.



Assesses roadway, signal system, and other rights-of-way improvements that could be made to support the transit vision outlined in the Service Element.



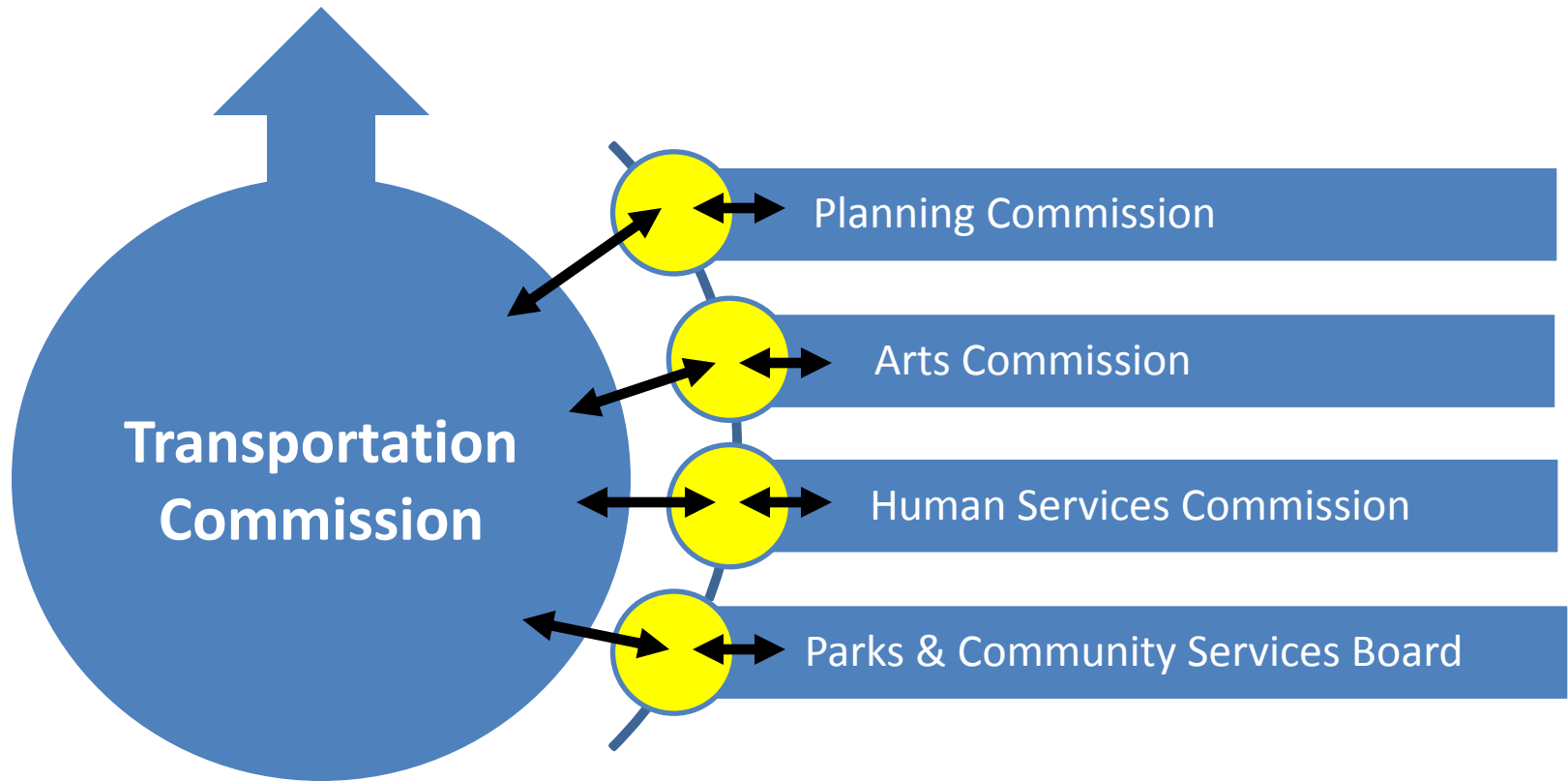
Articulates Bellevue’s interests as it responds to regional transit policy changes and financial uncertainties, and coordinates with partner agencies.

Transit Service Vision



- ▼ Transportation Commission Meetings
- ★ Transportation Commission Transmittal to Council
- City Council Briefings

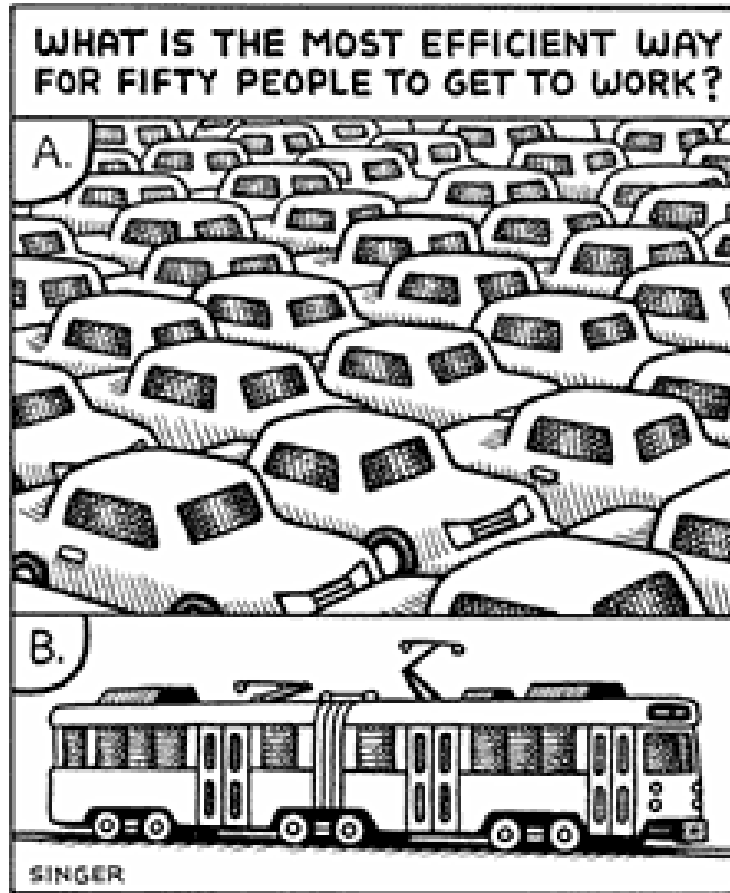
Bellevue City Council



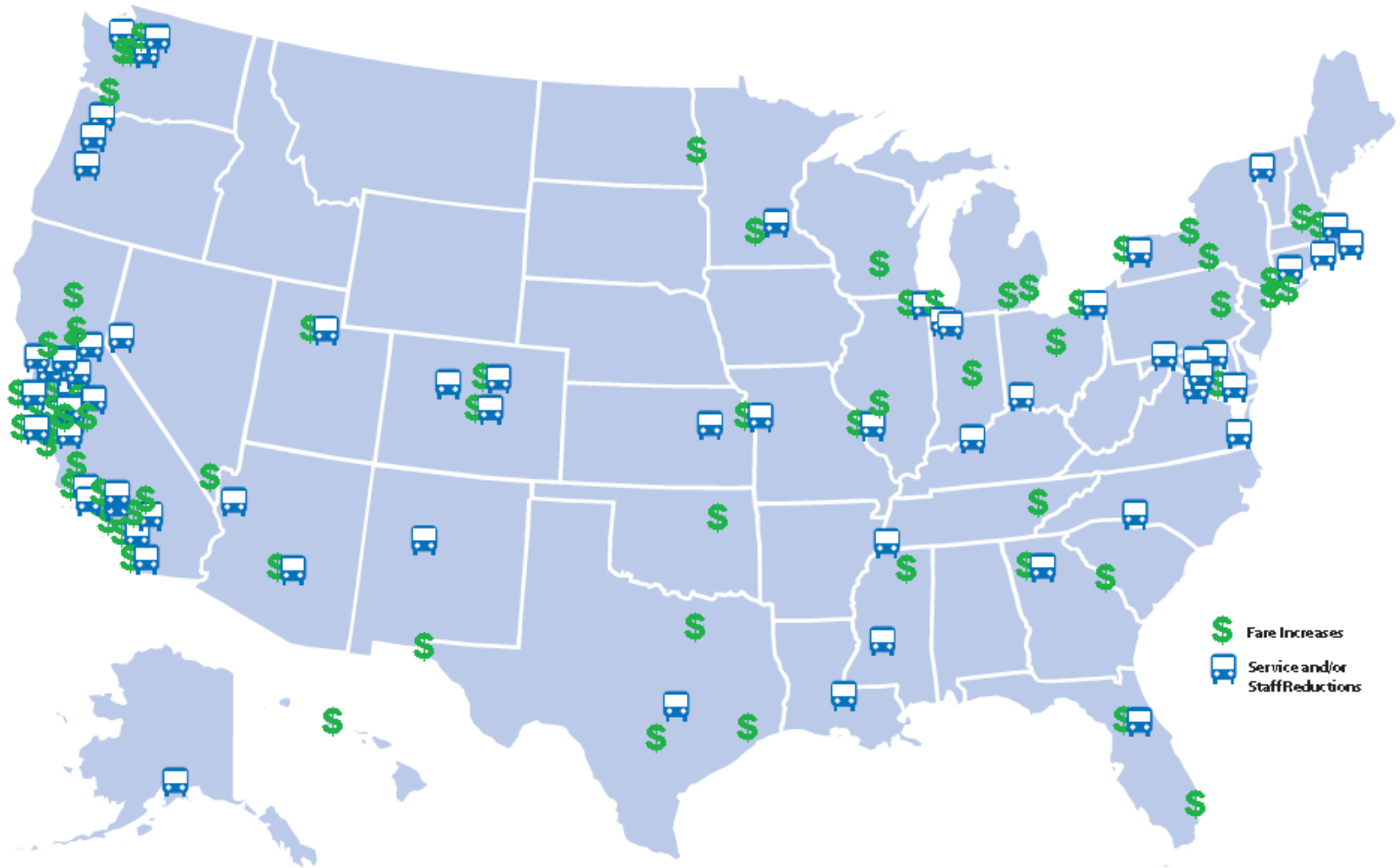
 Members of the Planning, Arts, and Human Services Commissions and the Parks & Community Services Board are invited to all staff briefings on the TMP to the Transportation Commission.

- 1. Max 2 reps from each Board/Commission per table.**
- 2. Supported by staff facilitator, note-taker, & scribe.**
- 3. Discussion topics.**
- 4. Reporting out to the broader group.**
- 5. No formal break.**
- 6. Summary sent out to participants for review.**
- 7. Input informs transit service vision.**
- 8. Questions?**

Trade-offs



2009 Transit Fare Increases, Service Reductions & Staff Reductions



Source: Nelson\Nygaard; "Standed at the Station"

Consider “the dynamic nature of Bellevue’s economic expansion [which] requires a bold transit vision.”



Source: Disney “Magic Highway USA” 1958 publicity still



“Other than having my daughters or friends take me places transit is my main source of transportation.”

Marj Leidy
Bellevue Resident



“My eyesight and back are really too bad at this point to drive. It would not be safe for me to drive.”

Stacey Dunn
Bellevue Resident



“I can’t afford to buy a car and so I use the bus every day to reach BCC. Transit is a crucial part of my life.”

Takhmi Dzhuraeva
Seattle Resident



“I am getting training to get back to work at the Div. of Vocational Rehabilitation in Bellevue.”

Tim Steinert
Kirkland Resident

ISSUES EXPERIENCED BY WORK COMMUTERS

65%



I had to stand while riding the bus because every seat was occupied. (880)

51%



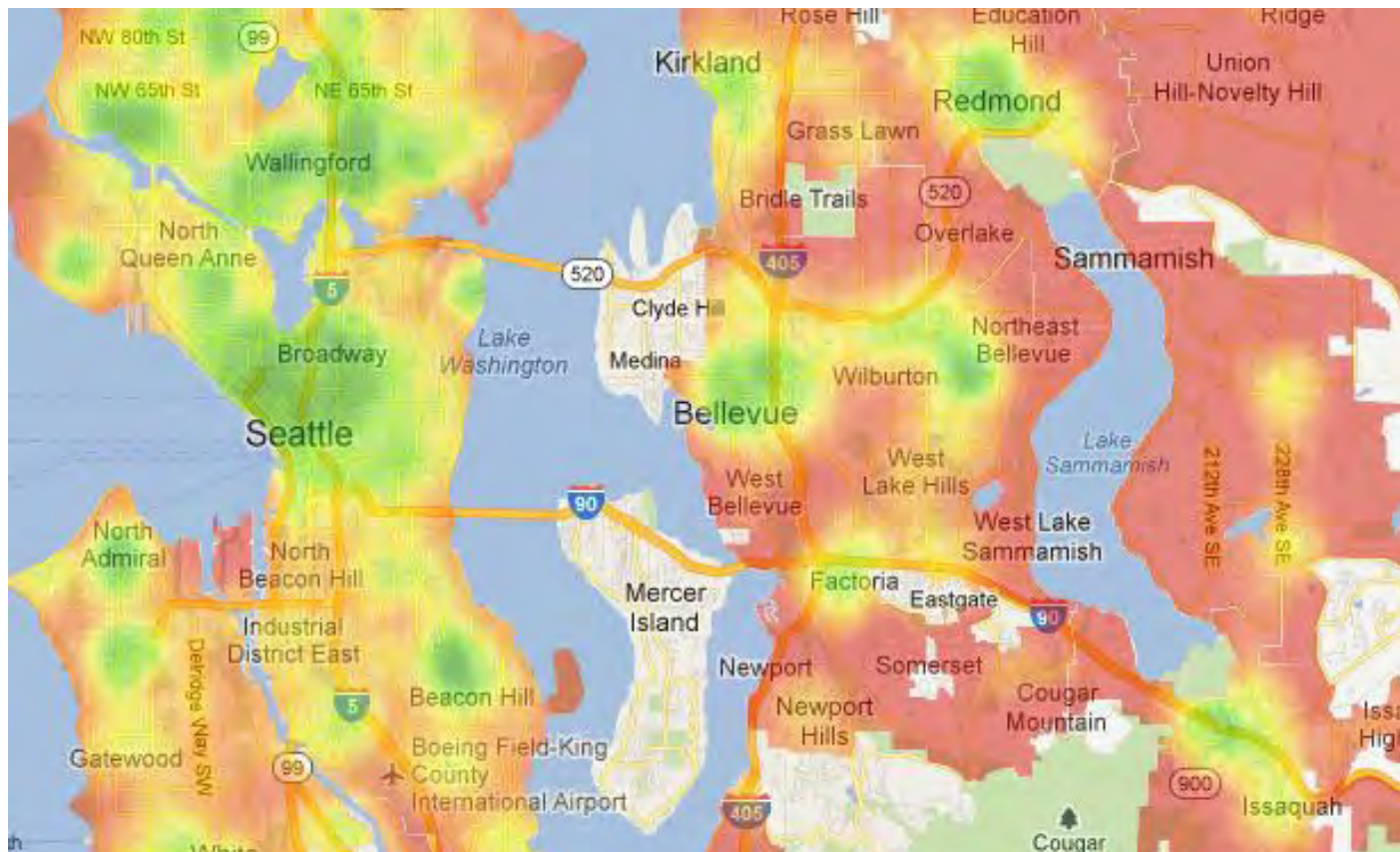
I was unable to stay out of the rain/snow/wind while waiting at my bus stop because there is no shelter/ the shelter is too small. (690)

48%



I was late for work/ an appointment because the bus arrived at my stop more than five minutes late. (650)

“TransitScore” measures how well a location is served by transit.



Transit Score	Description
90-100	Rider's Paradise — World-class public transportation.
70-89	Excellent Transit — Transit is convenient for most trips.
50-69	Good Transit — Many nearby public transportation options.
25-49	Some Transit — A few nearby public transportation options.
0-24	Minimal Transit — It is possible to get on a bus.

← Seattle Score: 59
 ← Bellevue Score: 39

<http://www.bellevuewa.gov/bellevue-transit-plan.htm>



Franz Loewenherz

Transportation Department

floewenherz@bellevuewa.gov

425-452-4077